



BHARAT HEAVY ELECTRICALS LIMITED

(A Govt. of India undertaking)

MATERIALS MANAGEMENT

Electro Porcelains Division, Bangalore 560012

RFQ No: CBT-3 987 00 14700

Date:03.6.2016

Contact Person: Elangovan.A
Telephone number: 22182306
Mob: 9945599672

Date of issue:03.6.2016

Quotation dead line: 23.6.2016

Date & Time of tender opening 23.6.2016 at 2.30 PM

Material required in staggered delivery as and when required

Dear sir,

Sub: Request For Quotation

Please submit without obligation your lowest quotation superscripting **RFQ no. and due date on the cover** to supply wooden crates as per our drawing.

SL.NO	DESCRIPTION	Quantity
1	CARDBOARD TUBE AS PER DRAWING NO 3 987 00 14700 CBT/00	100000 MTRS

SUPPLY: Supplier has to supply the tubes of required length on **as and when required basis**. The length in the range (1.0 Mt – 4.2 Mt) and quantity required will be informed to the vendor one month before. Supplier must agree to supply any required length by BHEL and rates to be offered on **per meter basis**.

DEIVERY TERMS: F.O.R TO BHEL/EPD STORES

PAYMENT TERMS: 45 Days from goods receipt through NEFT only. Difference will be loaded @ 15.7 % P.A. (No advance payment/ Against Proforma Invoice) will be entertained. Please mention the taxes and duties clearly.

Enclosed : copy of drawing

Address
DGM/MM
Bharat Heavy Electricals Limited
Electro-Porcelains Division
P.B.1245.IISC Post, Malleswaram, Bangalore- 560012 (Karnataka)

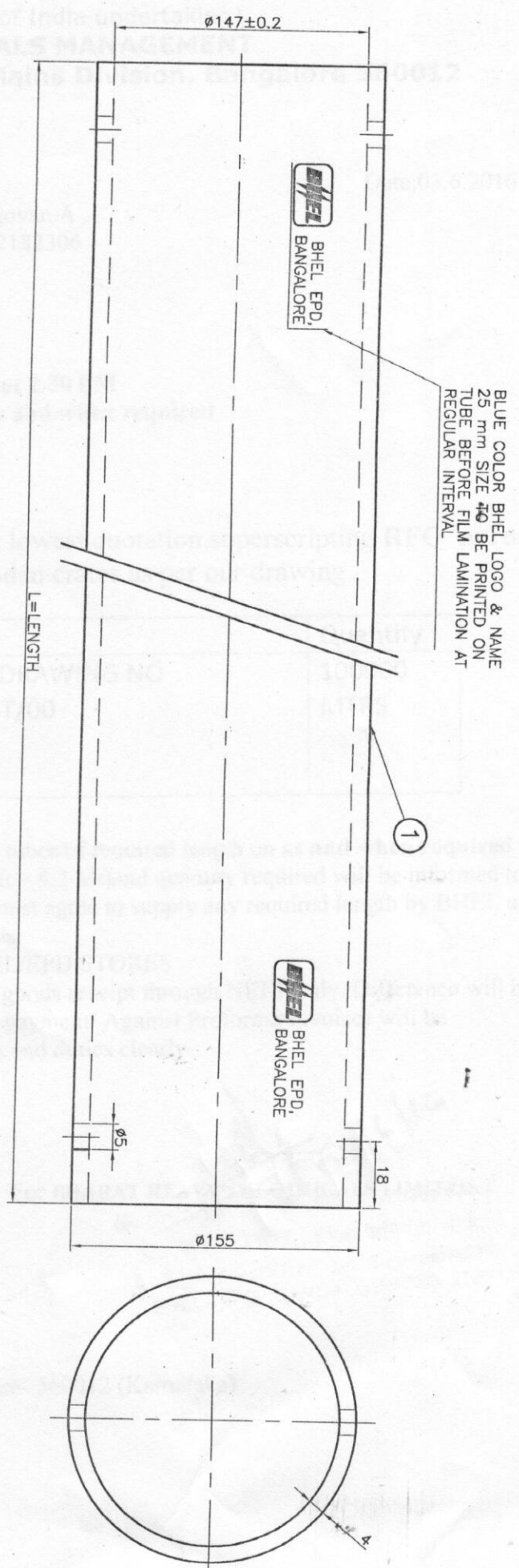
For BHARAT HEAVY ELECTRICALS LIMITED

03/6/16
A. ELANGO VAN, Sr. Engineer/M.M.
BHEL-EPD, BANGALORE-560 012

FIRST ANGLE PROJECTION

ALL DIMENSIONS ARE IN mm.

REV 0
 DRG No. 3 987 00 14700 CBT



BLUE COLOR BHEL LOGO & NAME 25 mm SIZE TO BE PRINTED ON TUBE BEFORE FILM LAMINATION AT REGULAR INTERVAL

THE INFORMATION ON THIS DOCUMENT IS THE PROPERTY OF BHARAT HEAVY ELECTRICALS LIMITED., IT MUST NOT BE USED DIRECTLY OR INDIRECTLY IN ANY WAY DETRIMENTAL TO THE INTEREST OF THE COMPANY

NOTES:
TUBE MATERIAL: STANDARD 4mm CARDBOARD CONFIRMS TO IS:2617 (LATEST REVISION)
 OUTSIDE SURFACE TO BE LAMINATED USING 50 MICRONS THICK POLYETHYLENE FILM BY HEAT SEALING METHOD
TUBE TESTS: AS PER IS:13975(LATEST REVISION). TEST SAMPLE SHOULD WITHSTAND A MINIMUM CRUSHING STRENGTH-20kgf

EXACT REQUIREMENT OF L=LENGTH WILL BE INDICATED WHILE PLACING PURCHASE ORDER.
 PRICE TO BE QUOTED FOR METER LENGTH BASIS.

CONTROLLED COPY

INVENTORY No. SIGN AND DATE REF. DRG. No.

REV	DATE	ALTERED CHECKED	REV	DATE	ALTERED CHECKED	REV	DATE	ALTERED CHECKED

		BHARAT HEAVY ELECTRICALS LTD.		DRN	NAME	SIGN	DATE
ELECTROPORCELAINS DIVISION		BANGALORE 560 012		CHD	VICHAR S	<i>(Signature)</i>	24.5.2016
SCALE		N.T.S		APPD	S S P	<i>(Signature)</i>	24.5.16
WEIGHT (kg)		(Approx)		REF TO ASSY.DRG			14/5/16

DEPT	GRADE OF	SCALE	WEIGHT (kg)	DRAWING No.	REV.
	TOL DIM	N.T.S	(Approx)	3 987 00 14700 CBT	00
	C/M/F				
TITLE				No. OF SHEETS	
CARDBOARD TUBE		FOR PACKING OF COMPOSITE LONG ROD INSULATOR			