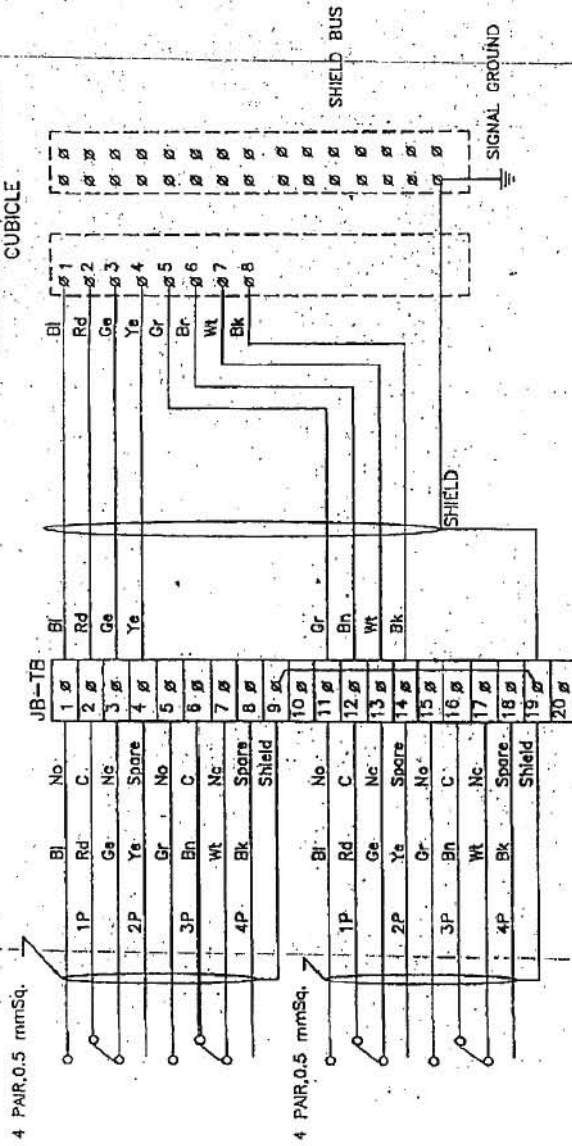


MARSHALLING/TERMINATION CUBICLE



FOR TENDER PURPOSE ONLY

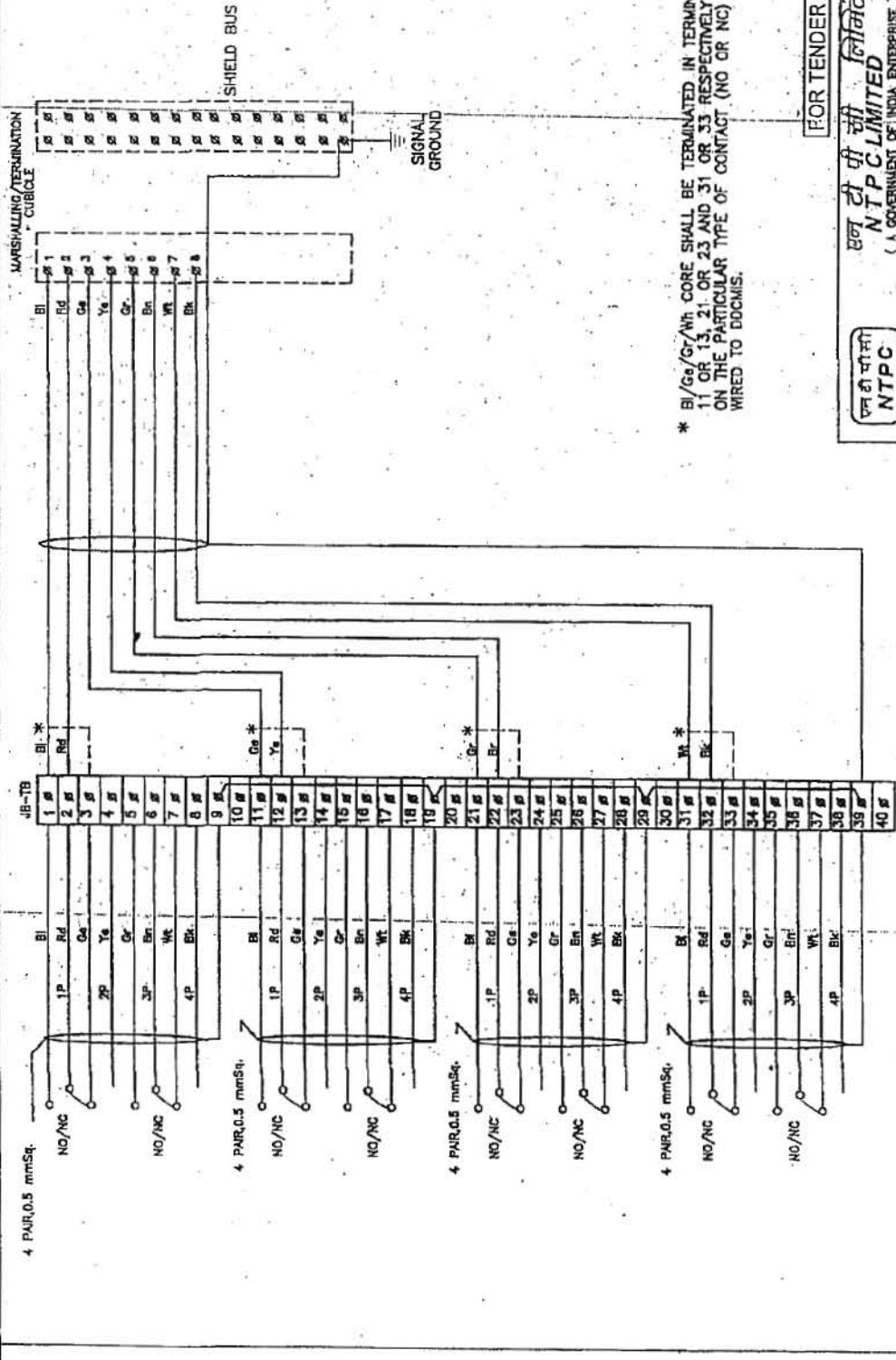
एन टी सी लिमिटेड
NTPC LIMITED
 (A GOVERNMENT OF INDIA ENTERPRISE)
 ENGINEERING DIVISION




PROJECT		TYPICAL THERMAL POWER PROJECT	
TITLE		INTERFACING OF FIELD INSTRUMENTS/ SWGR SWITCH (COC) TERMINATION DETAILS	
REV. NO.	DATE	SCALE	DRG. NO.
A	21.04.06	A3	0000-999-PCI-A-065
DESCRIPTION		SIZE	SH. OF. OF 14
		A3	0000-999-PCI-A-065
		NTS	SH. OF. OF 14
DRAWN DESIGN CHKD.		U	E C
APPRD.		U	E C
Cleared by		U	E C

This document is the property of NATIONAL THERMAL POWER CORPORATION LTD. No part of this document will be reproduced by any means without the written permission.

SECTION C3, SUB-SECTION II

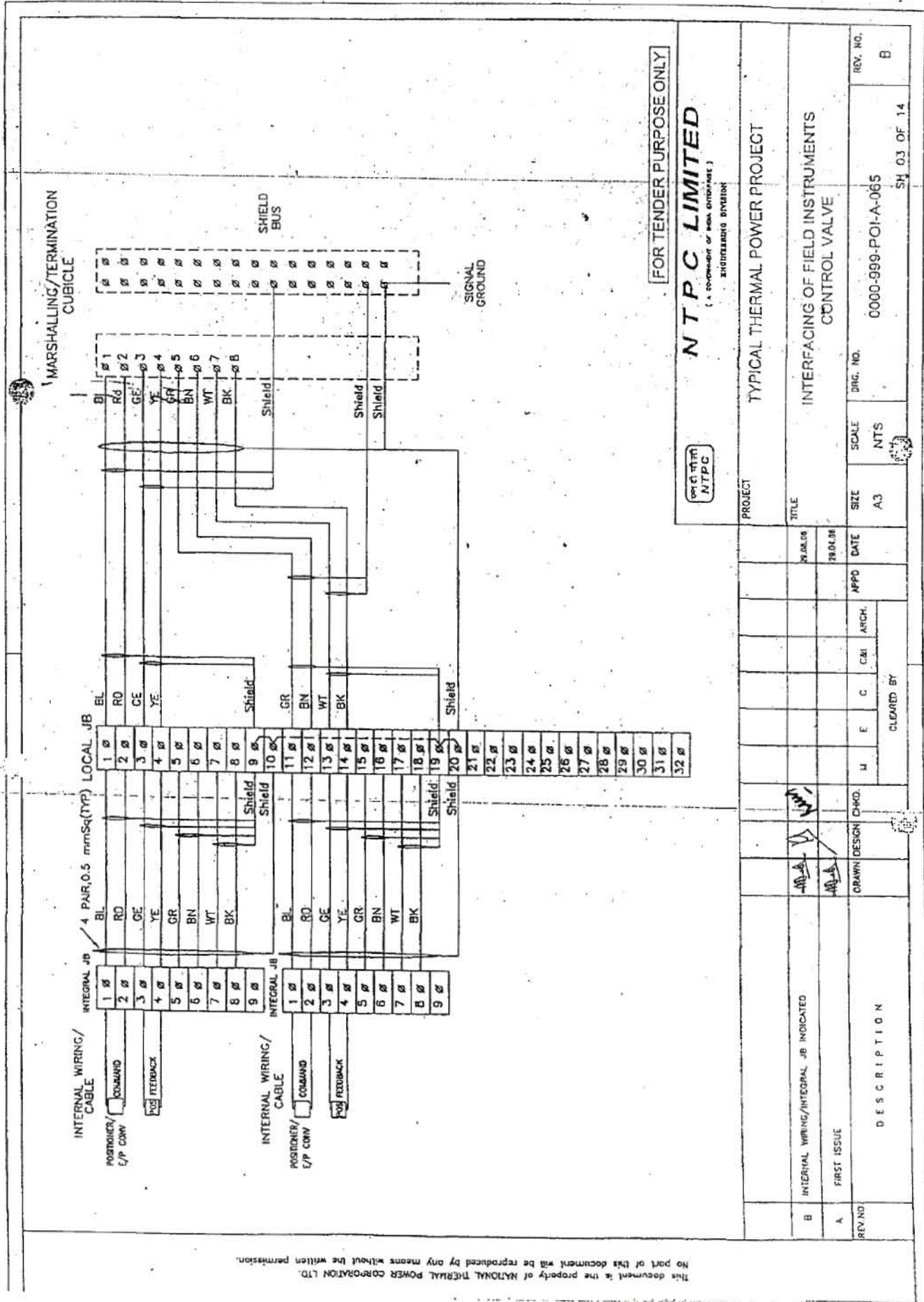


FOR TENDER PURPOSE ONLY


एन टी पी सी लिमिटेड
NTPC LIMITED
 (A GOVERNMENT OF INDIA ENTERPRISE)
 ENGINEERING DIVISION

PROJECT		TYPICAL THERMAL POWER PROJECT	
TITLE		INTERFACING OF FIELD INSTRUMENTS SWITCH TERMINATION DETAILS	
NO/NC		NO/NC	
REV. NO.	REV. NC	DRG. NO.	0000-999-PCI-A-065
A		SCALE	NTS
		SIZE	A3
		DATE	20.04.06
		APPRO. DATE	
		ARCH.	
		CAD	
		C	
		E	
		M	
		CLEARED BY	
		DRAWN DESIGN CHKD.	
		DESCRIPTION	

This document is the property of NATIONAL THERMAL POWER CORPORATION LTD. No part of this document will be reproduced by any means without the written permission.



This document is the property of NATIONAL THERMAL POWER CORPORATION LTD. No part of this document will be reproduced by any means without the written permission.

FOR TENDER PURPOSE ONLY

NTPC LIMITED
(A COMPANY OF NDA GROUP OF COMPANIES)
ENGINEERING DIVISION

PROJECT	TYPICAL THERMAL POWER PROJECT		
TITLE	INTERFACING OF FIELD INSTRUMENTS CONTROL VALVE		
REV. NO.	REV. NO.	DIRG. NO.	REV. NO.
A	0000-999-POI-A-065	NTS	B
REV. NO.	SH. 03 OF 14		B

REV. NO.	DESCRIPTION	DRAWN	DESIGN	CHKD.	U	E	C	CEI	ARCH.	APPD	DATE	SCALE	SIZE	DIRG. NO.	REV. NO.
B	INTERNAL WIRING/INTEGRAL JB INDICATED										28.01.08	NTS	A3	0000-999-POI-A-065	B
A	FIRST ISSUE														

FOR TENDER PURPOSE ONLY

NTPC LIMITED
(A GOVERNMENT OF INDIA ENTERPRISE)
ENGINEERING DIVISION

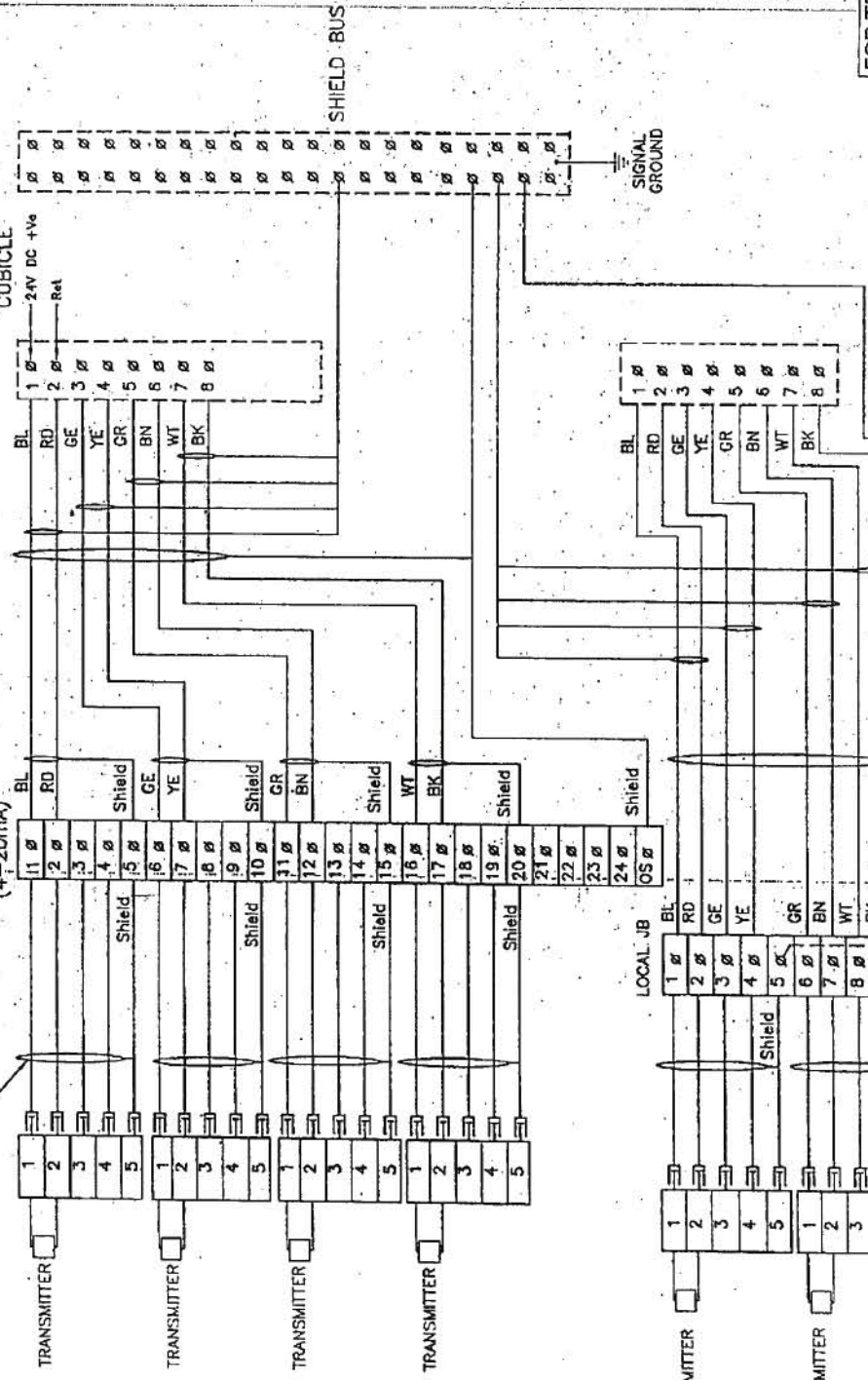


TYPICAL THERMAL POWER PROJECT

INTERFACING OF FIELD INSTRUMENTS
4-20mA

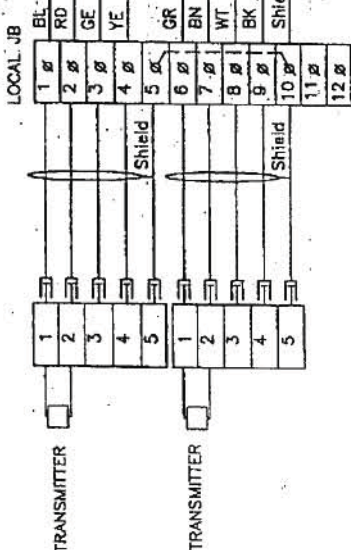
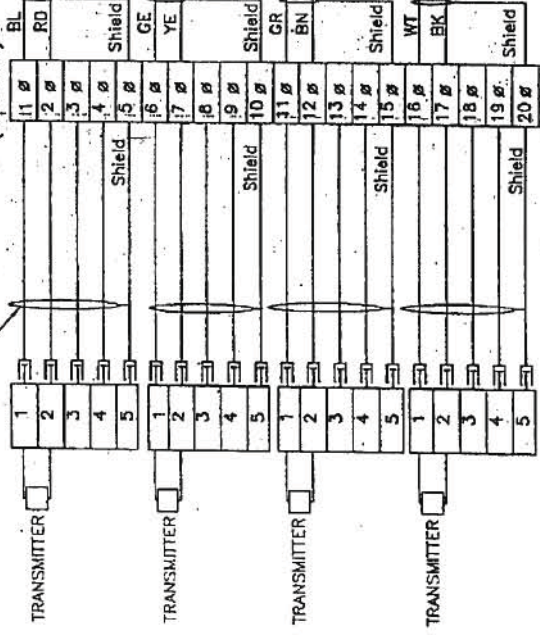
REV. NO.	B
DRG. NO.	0000-999-POI-A-055
SCALE	NTS
SIZE	A3
DATE	
APPD	
C&I ARCH.	
M E C	
CLEARED BY	
SH. 04 OF 14	

MARSHALLING/TERMINATION CUBICLE

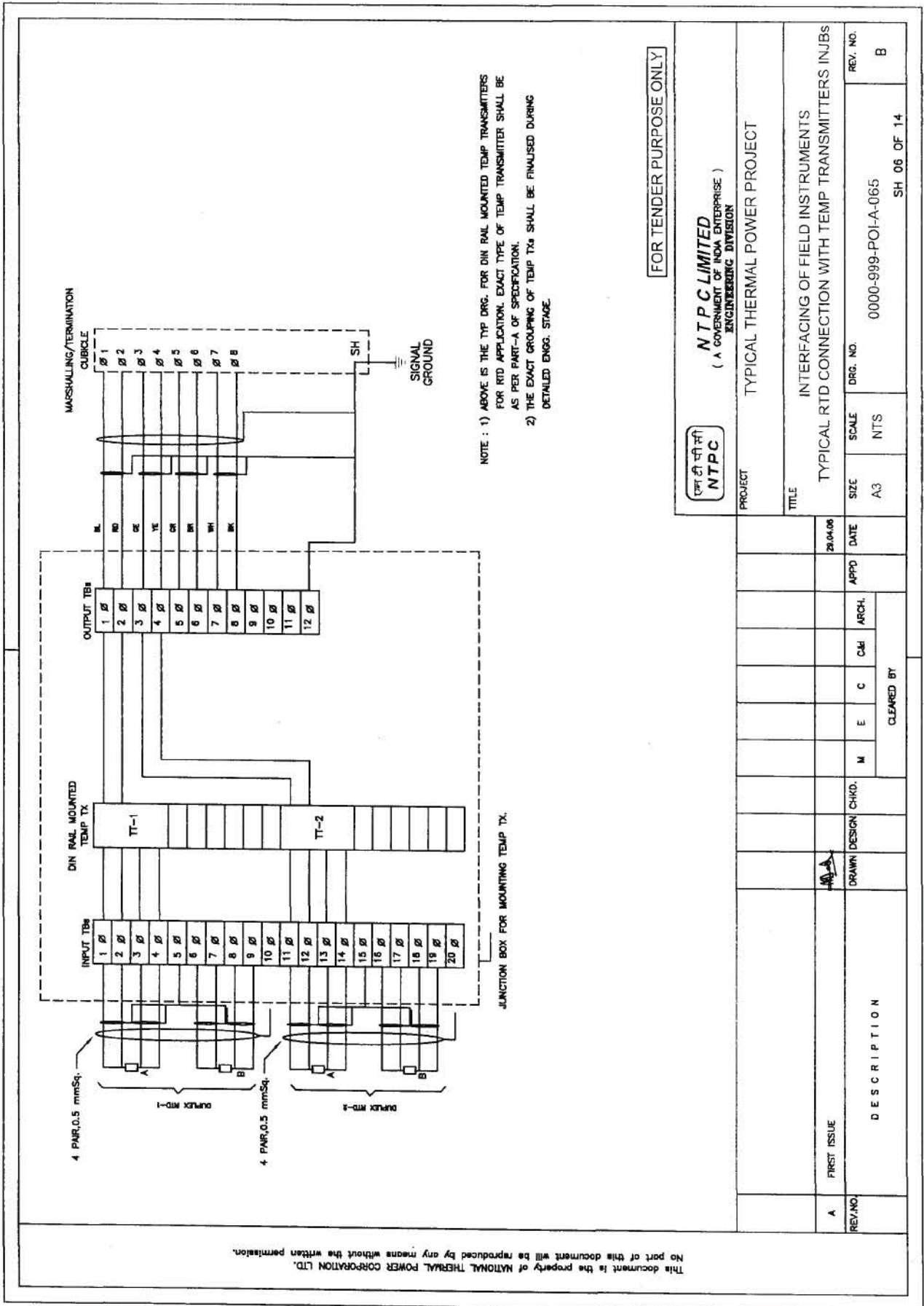


INTERNAL WIRING/2 PAIR, 0.5 mm² (TYP)

INTERNAL JB OF LIE/LIR (4-20mA)



This document is the property of NATIONAL THERMAL POWER CORPORATION LTD. No part of this document will be reproduced by any means without the written permission.



NOTE : 1) ABOVE IS THE TYP DRG. FOR DIN RAIL MOUNTED TEMP TRANSMITTERS FOR RTD APPLICATION. EXACT TYPE OF TEMP TRANSMITTER SHALL BE AS PER PART-A OF SPECIFICATION.
 2) THE EXACT GROUPING OF TEMP TXs SHALL BE FINALISED DURING DETAILED ENGG. STAGE.

This document is the property of NATIONAL THERMAL POWER CORPORATION LTD. No part of this document will be reproduced by any means without the written permission.

FOR TENDER PURPOSE ONLY

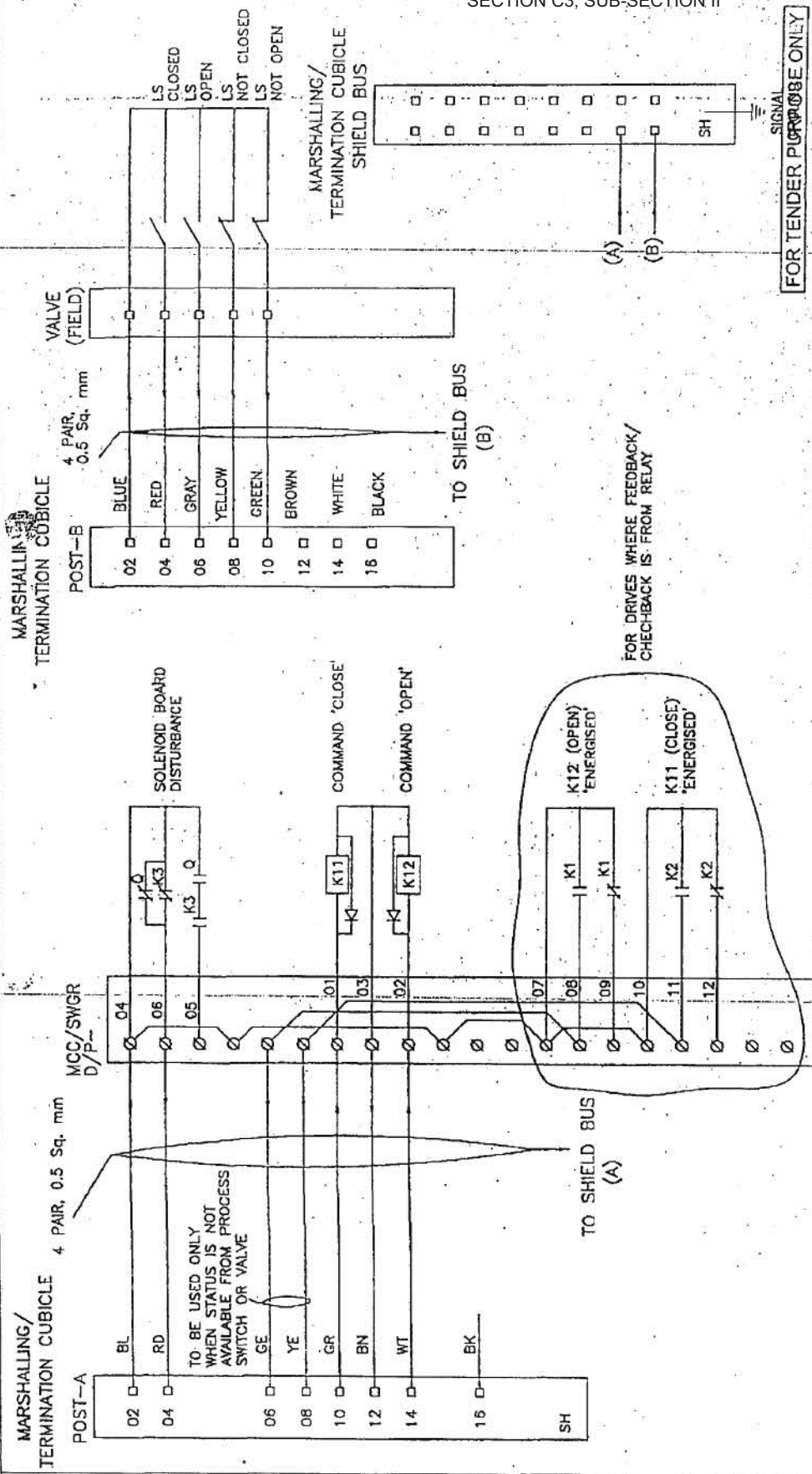


NTPC LIMITED
 (A GOVERNMENT OF INDIA ENTERPRISE)
 ENGINEERING DIVISION

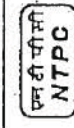
PROJECT	TYPICAL THERMAL POWER PROJECT		
TITLE	INTERFACING OF FIELD INSTRUMENTS TYPICAL RTD CONNECTION WITH TEMP TRANSMITTERS IN JBS		
DATE	20.04.06	APPD	
SIZE	A3	SCALE	NTS
DRG. NO.	0000-999-POI-A-065	REV. NO.	B
		SH 06 OF 14	

REV. NO.	A	DESCRIPTION	FIRST ISSUE
DRAWN		DESIGN	CHKD.
M	E	C	CHKD.
CLEARED BY			
ARCH.			

SECTION C3, SUB-SECTION II



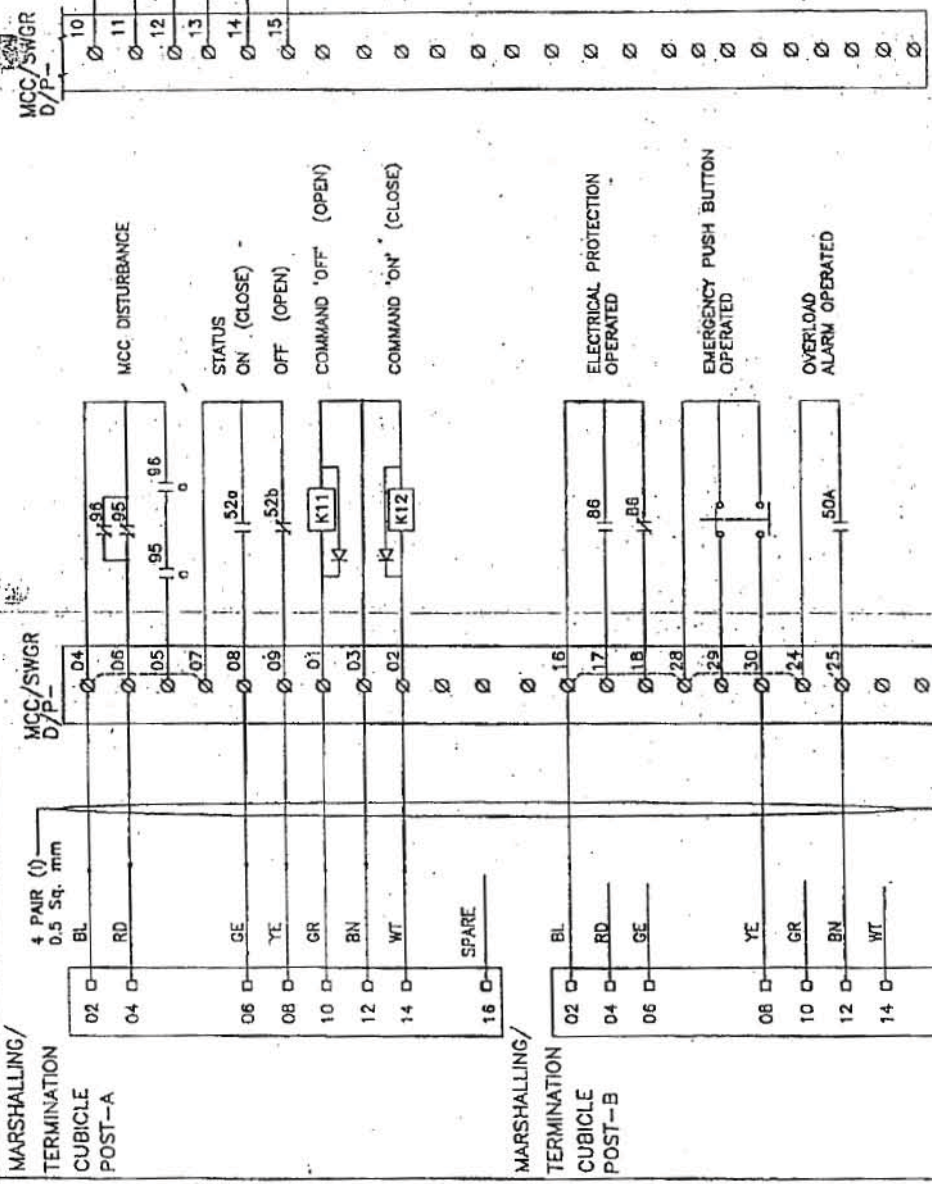
This document is the property of NATIONAL THERMAL POWER CORPORATION LTD. No part of this document will be reproduced by any means without the written permission.



एन टी पी सी लिमिटेड
NTPC LIMITED
 (A GOVERNMENT OF INDIA ENTERPRISE)
 ENGINEERING DIVISION

PROJECT		TYPICAL THERMAL POWER PROJECT	
TITLE		INTERFACING OF FIELD INSTRUMENTS INTERFACE OF DDCMIS/PLC WITH MCC/SWGR/ACTUATOR (DOUBLE COIL SOLENOIDS)	
REV. NO.	REV. NO.	SCALE	ORIG. NO.
A	A	NTS	0000-999-FOI-A-065
SIZE	DATE	APPD	SH 09 OF 14
A3	29.01.06		
DESCRIPTION		CLEARED BY	
FIRST ISSUE		M E C	
REV. NO.	DESIGN CHGD.	ARCH.	

This document is the property of NATIONAL THERMAL POWER CORPORATION LTD. No part of this document will be reproduced by any means without the written permission.



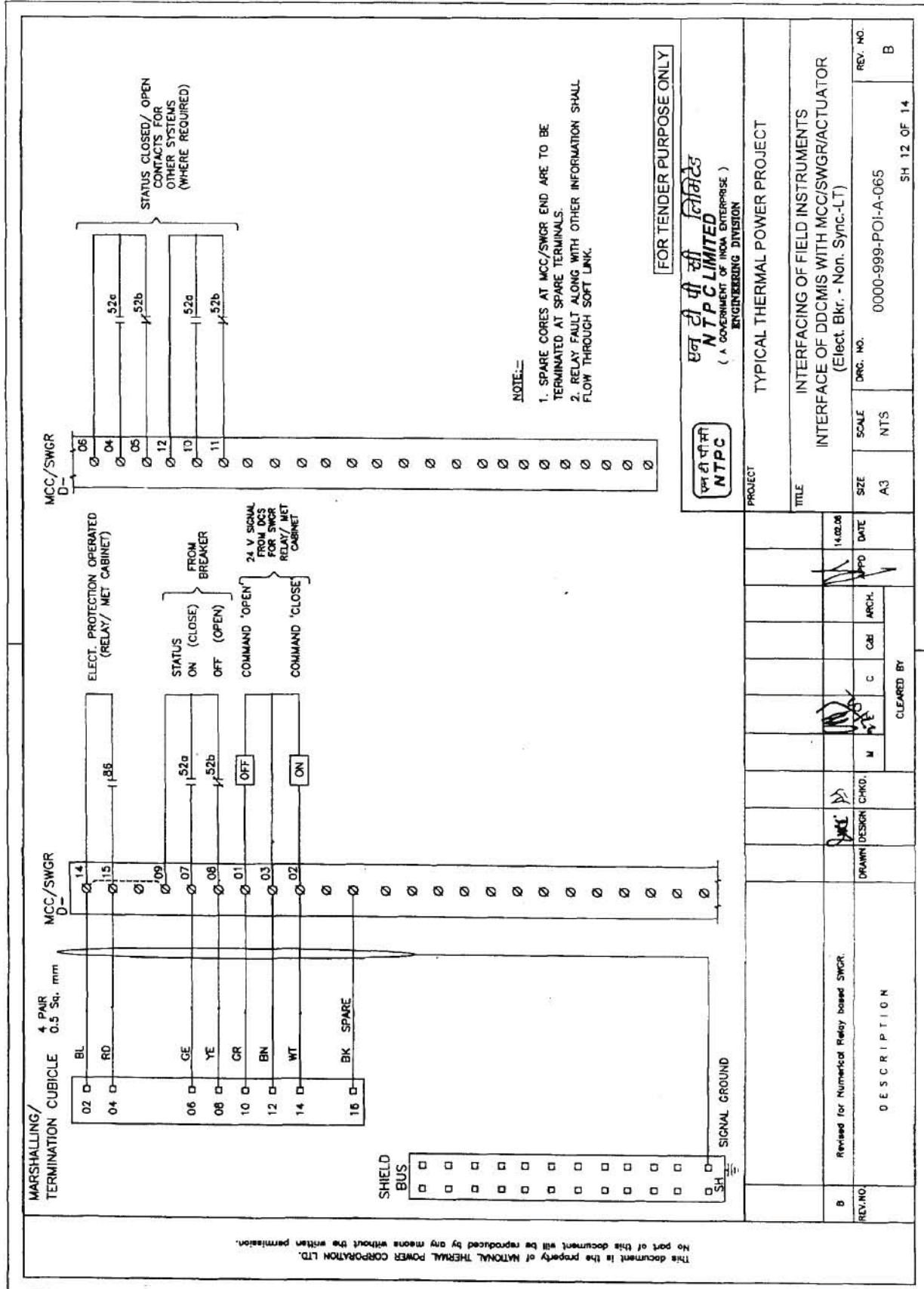
STATUS ON/OFF CONTACTS FOR OTHER SYSTEMS (WHERE REQUIRED)

FOR TENDER PURPOSE ONLY

एन टी सी लिमिटेड
NTPC LIMITED
(A GOVERNMENT OF INDIA ENTERPRISE)
ENGINEERING DIVISION

एन टी सी लिमिटेड
NTPC

PROJECT		TYPICAL THERMAL POWER PROJECT	
TITLE		INTERFACING OF FIELD INSTRUMENTS INTERFACE OF DDCMIS WITH MCC/SWGR/ACTUATOR (L-T-A)	
SIZE	SCALE	DRG. NO.	REV. NO.
A3	NTS	0000-999-POI-A-065	A
DATE		SH 11 OF 14	
APPROVED		DATE	
ARCH.		DATE	
C&I		DATE	
E		DATE	
M		DATE	
CHKD.		DATE	
DRAWN		DATE	
REVAND.		DATE	
DESCRIPTION		Cleared by:	
A FIRST ISSUE			



This document is the property of NATIONAL THERMAL POWER CORPORATION LTD. No part of this document will be reproduced by any means without the written permission.

FOR TENDER PURPOSE ONLY

NTPC
एन टी पी सी लिमिटेड
(A GOVERNMENT OF INDIA ENTERPRISE)
ENGINEERING DIVISION

TYPICAL THERMAL POWER PROJECT

PROJECT TITLE
INTERFACING OF FIELD INSTRUMENTS
INTERFACE OF DDCMIS WITH MCC/SWGR/ACTUATOR
(Elect. Bkr. - Non. Sync.-LT)

SCALE A3
SIZE NTS
DRG. NO. 0000-999-POI-A-065
REV. NO. B

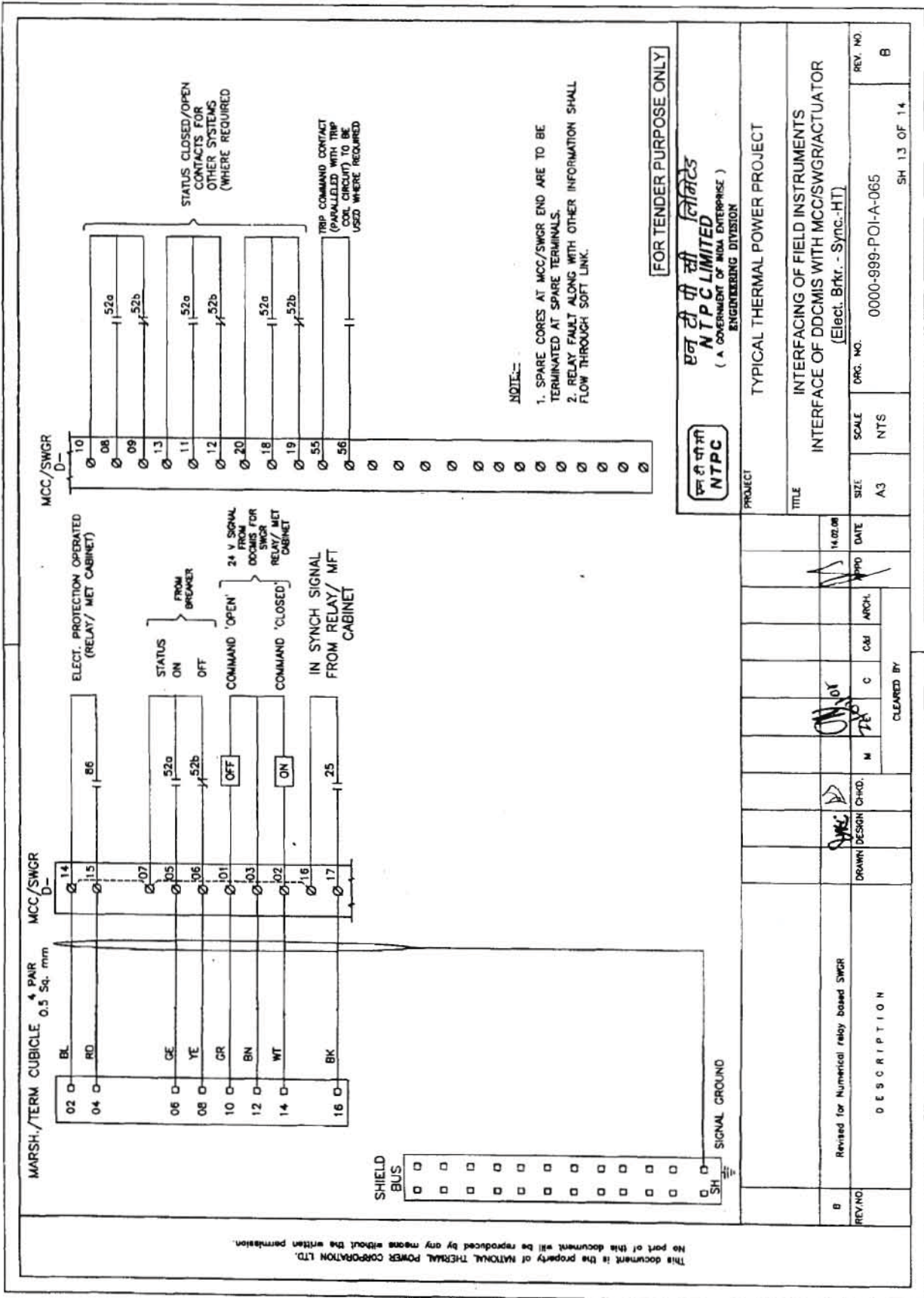
DATE 14.02.08
APPROVED [Signature]
DATE 14.02.08

CHECKED BY [Signature]
DATE 14.02.08

DESIGNED BY [Signature]
DATE 14.02.08

DESCRIPTION
Revised for Numerical Relay based SWGR.

SH 12 OF 14



This document is the property of NATIONAL THERMAL POWER CORPORATION LTD. No part of this document will be reproduced by any means without the written permission.

FOR TENDER PURPOSE ONLY

एन टी पी सी लिमिटेड
NTPC LIMITED
 (A GOVERNMENT OF INDIA ENTERPRISE)
 ENGINEERING DIVISION

PROJECT TYPICAL THERMAL POWER PROJECT

TITLE INTERFACING OF FIELD INSTRUMENTS INTERFACE OF DDCMIS WITH MCC/SWGR/ACTUATOR (Elect. Brkr. - Sync.-HT)

REV. NO. B

ORG. NO. 0000-999-POI-A-065

SCALE NTS

SIZE A3

DATE 14.02.08

APPROVED [Signature]

ARCH. [Signature]

DESIGNED [Signature]

CHECKED [Signature]

CLEAR BY

DESCRIPTION Revised for Numerical relay based SWGR

SH 13 OF 14