

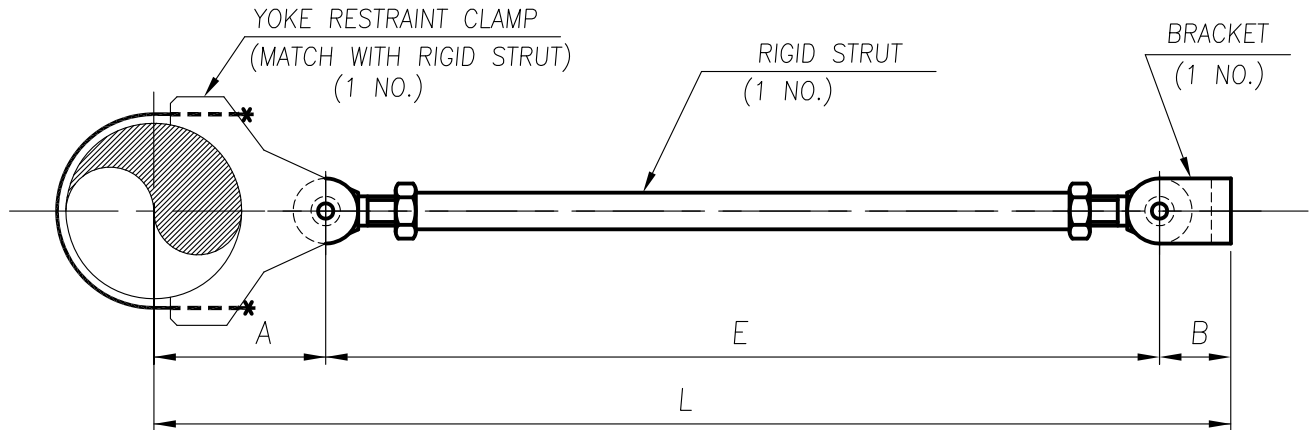
PIPING CENTRE

DATA SHEET FOR RIGID STRUT ASSEMBLY

PROJECT : BARH STPP STAGE-1 (3x660 MW)

CUSTOMER : NTPC

CUST No. : 7285, 7286 & 7287



NOTES :-

1. REFER TECHNICAL SPECIFICATION ENCLOSED HEREWITH.
2. SCOPE OF EACH RIGID STRUT ASSEMBLY INCLUDES RIGID STRUT, BRACKET ASSEMBLY & YOKE RESTRAINT CLAMP MATCHING WITH RIGID STRUT.
3. DIMENSIONS 'A' , 'B' & 'E' SHALL BE FIXED BY VENDOR WITH REF TO DIMENSION 'L'.
4. WIDTH OF DESIGNED YOKE RESTRAINT CLAMPS SHALL BE LESS THAN 200mm FOR THE SPECIFIED LOAD.
FOR CLAMP DETAILS, REFER DRG. NO. 4-00-301-40763
5. CLAMP WITH PROVISION OF WELDING BRACKET ASSY IS ALSO ACCEPTABLE.
6. THE 'L' DIMENSION SHALL BE ADJUSTABLE AT SITE BY $\pm 100\text{mm}$ (minimum)

SL No.	TAG No. PIPE SIZE	DESIGN LOAD \pm KN	L IN mm	YOKE RESTRAINT CLAMP				DESIGN TEMP IN °C
				ID (Min) IN mm	ID (Max) IN mm	A IN mm	MATERIAL	
01	LBA12BQ008	105	2195	483	495	650	ALLOY STEEL	546
	ID345X64.09							
02	LBA21BQ013-A	225	4195	625	632	700	ALLOY STEEL	546
	ID448X82.11							
03	LBA21BQ013-B	225	4195	625	632	700	ALLOY STEEL	546
	ID448X82.11							
04	LBA31BQ035	196	2652	483	495	650	ALLOY STEEL	546
	ID345X64.09							
05	LBA31BQ036	152	2731	483	495	650	ALLOY STEEL	546
	ID345X64.09							
06	LBA11BQ046	131	2195	483	495	650	ALLOY STEEL	546
	ID345X64.09							
07	LBA12BQ054	225	6082	483	495	650	ALLOY STEEL	546
	ID345X64.09							
08	LBA12BQ055	152	3861	483	495	650	ALLOY STEEL	546
	ID345X64.09							
09	LBA12BQ060	84	3758	483	495	650	ALLOY STEEL	546
	ID345X64.09							

PREPARED

SOURAV

APPROVED

M.MANO

DATE

20.07.2015

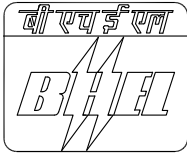
DRG. No.

4-00-301-40777

REV.

00

SHEET 01 OF 02



PIPING CENTRE

DATA SHEET FOR RIGID STRUT ASSEMBLY

PROJECT : BARH STPP STAGE-1 (3x660 MW)

CUSTOMER : NTPC

CUST No. : 7285, 7286 & 7287

SL No.	TAG No. PIPE SIZE	DESIGN LOAD ± KN	L IN mm	YOKE RESTRAINT CLAMP				DESIGN TEMP IN °C
				ID (Min) IN mm	ID (Max) IN mm	A IN mm	MATERIAL	
10	LBA11BQ062 ID345X64.09	207	6082	483	495	650	ALLOY STEEL	546
11	LBA11BQ063 ID345X64.09	154	3861	483	495	650	ALLOY STEEL	546
12	LBA11BQ068 ID345X64.09	85	3758	483	495	650	ALLOY STEEL	546
13	LBA21BQ103 ID448X82.11	485	4375	625	632	700	ALLOY STEEL	546
14	LBC21BQ021 ID863X24.09	138	3415	915	928	685	CARBON STEEL	331
15	LBC32BQ036 ID622X17.89	114	3715	660	670	550	CARBON STEEL	331
16	LBC31BQ057 ID622X17.89	114	3715	660	670	550	CARBON STEEL	331
17	LBC31BQ062 ID622X17.89	60	4000	660	670	550	CARBON STEEL	331
18	LBC31BQ064 OD457	36	990	461	470	450	CARBON STEEL	331
19	LBC31BQ066 OD457	47	1050	461	470	450	CARBON STEEL	331
20	LBC32BQ070 ID622X17.89	60	4000	660	670	550	CARBON STEEL	331
21	LBC32BQ072 OD457	34	990	461	470	450	CARBON STEEL	331
22	LBC32BQ074 OD457	48	1070	461	470	450	CARBON STEEL	331
23	LBB12BQ034 ID660X24.78	193	4649	713	726	775	ALLOY STEEL	574
24	LBB11BQ010 ID660X24.78	112	4420	713	726	775	ALLOY STEEL	574
25	LBB11BQ018 ID660X24.78	255	4610	713	726	775	ALLOY STEEL	574
26	LBB12BQ025-A ID660X24.78	212	4000	713	726	775	ALLOY STEEL	574
27	LBB12BQ025-B ID660X24.78	97	2120	713	726	775	ALLOY STEEL	574
28	LBB12BQ031 ID660X24.78	252	3700	713	726	775	ALLOY STEEL	574
29	LBB12BQ087 ID609X22.84	190	4700	658	674	735	ALLOY STEEL	574

PREPARED	APPROVED	DATE	DRG. No.	REV.
SOURAV	M.MANO	20.07.2015	4-00-301-40777	00
				SHEET 02 OF 02