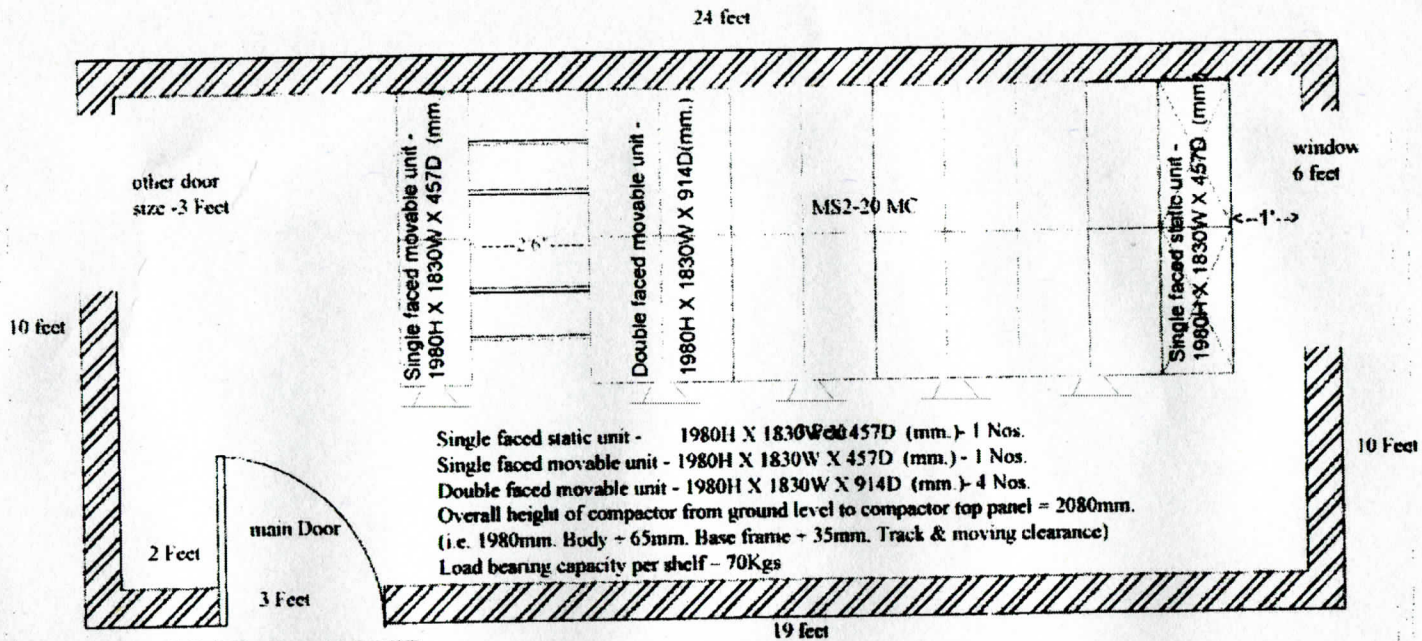


1st floor

2nd floor

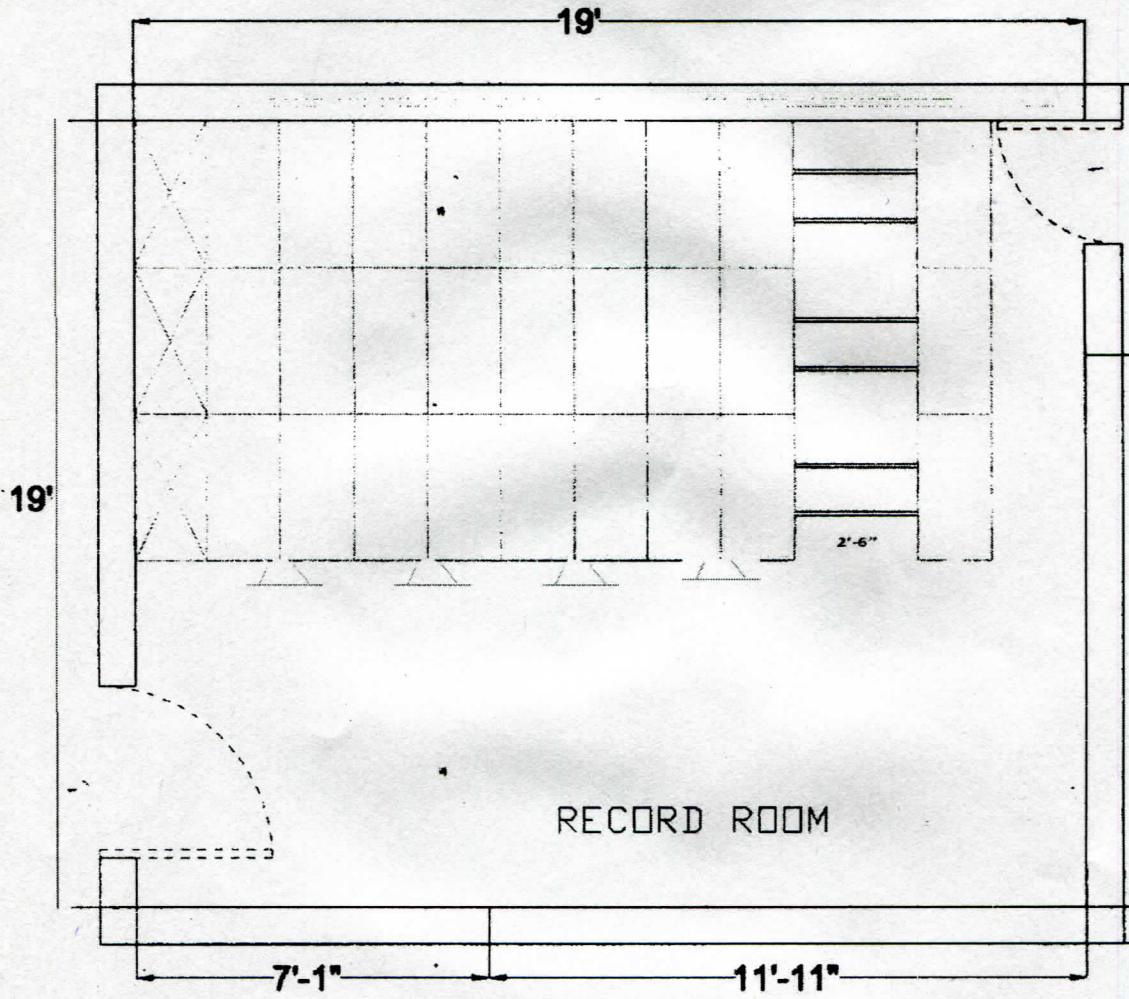
3rd floor



COMPACTOR LAYOUT

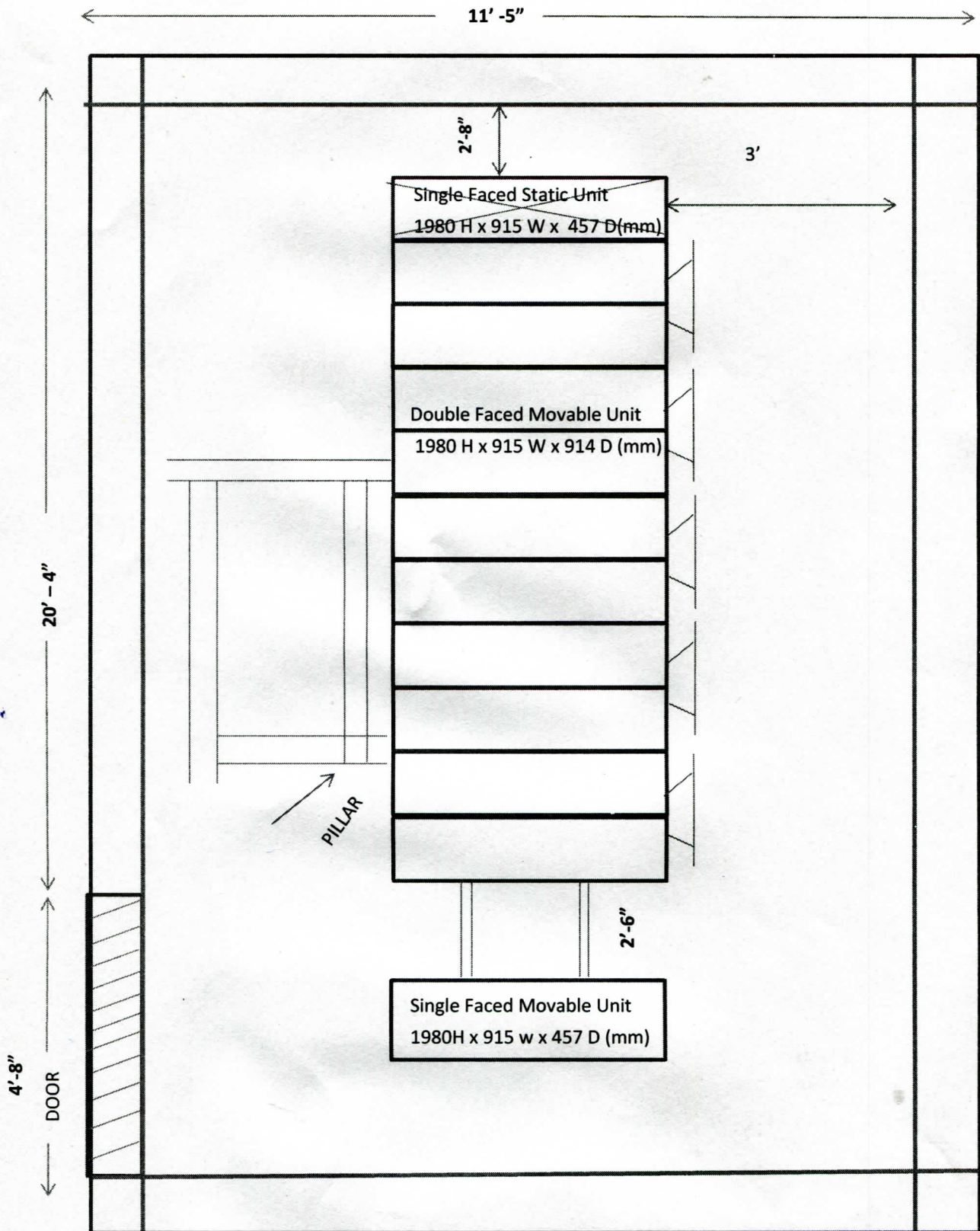
BHEL HR-EEX- Ground Floor

7



Drawn by [Signature]

Checked by [Signature]



Annexure - 4C

Handwritten signature/initials

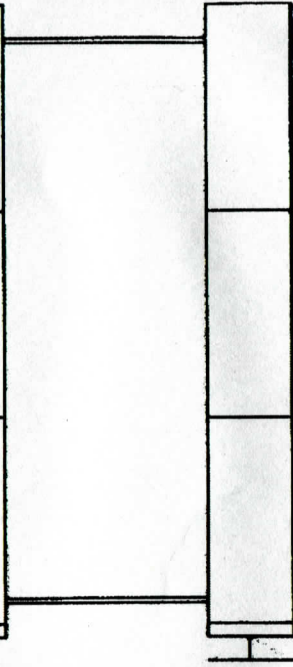
Handwritten signature/initials

RECORD ROOM LAYOUT

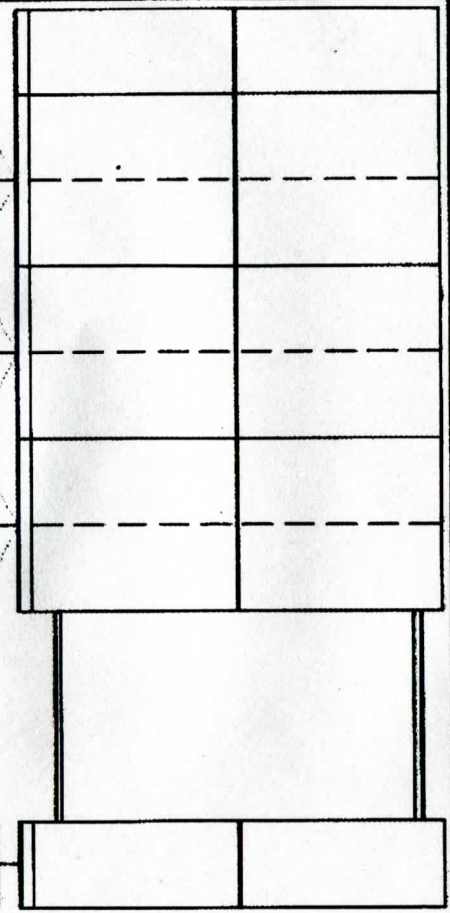
Dir. Jan
R/R



3 Bay, 30 body Mechanical



2 Bay, 16 body mechanical



15' 3' 7'-8"

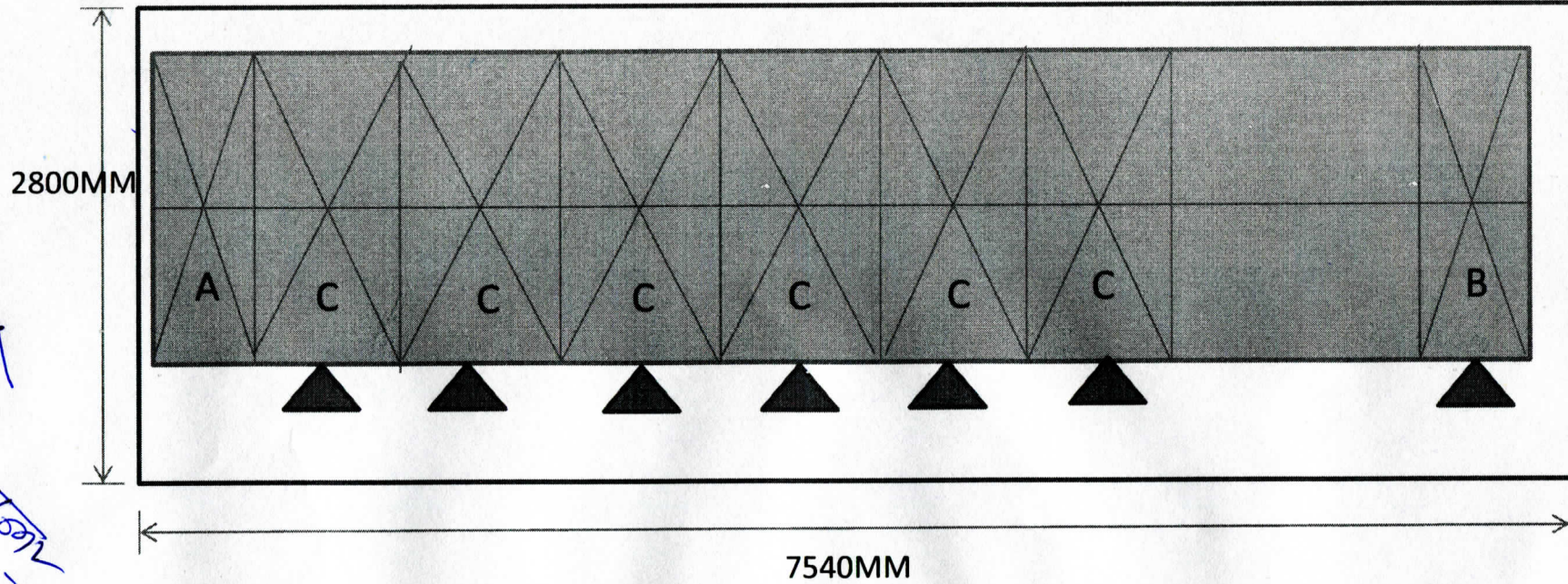
51'

83

5

Annex-5

1st
2nd
3rd



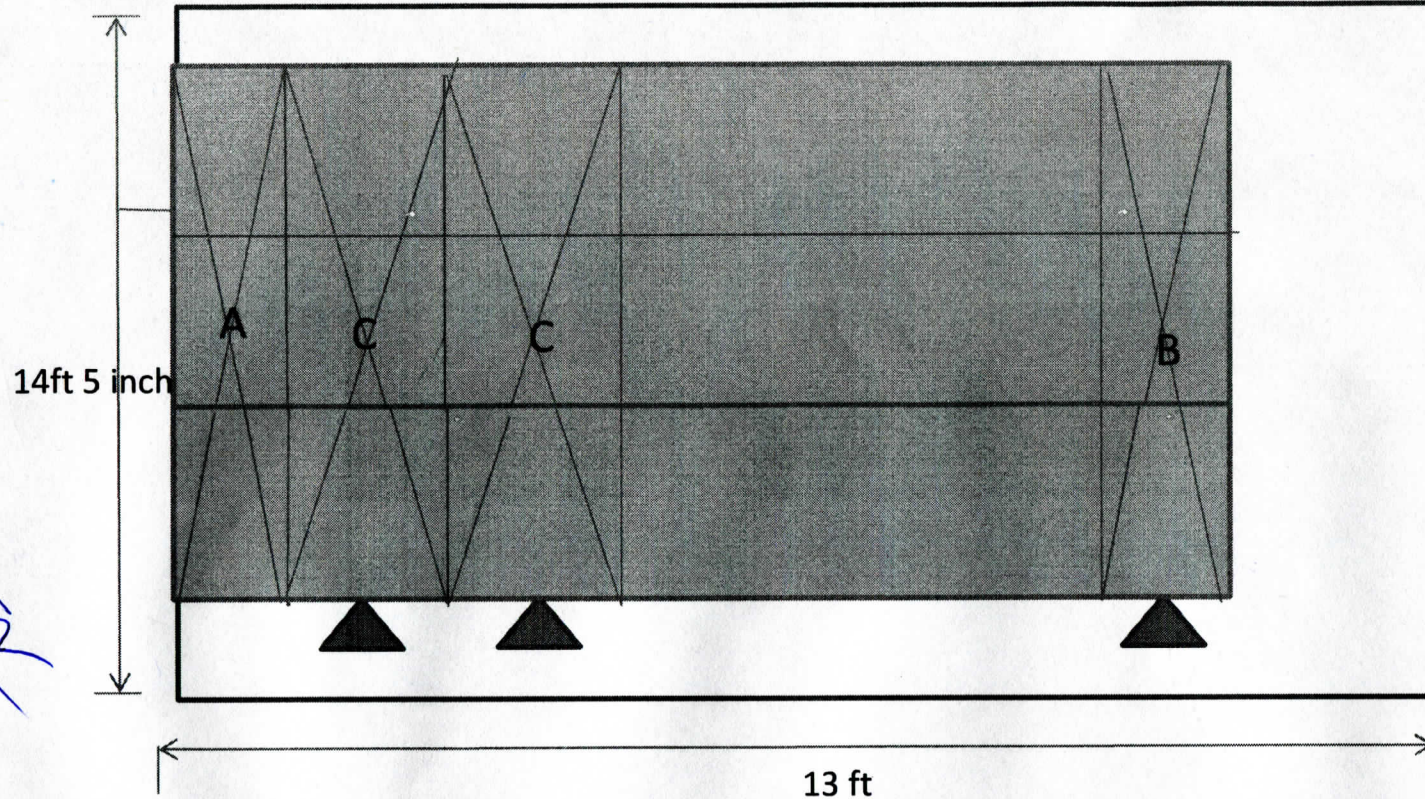
Compactor 2-Bay for QC-T

Detailed as follows :

- A---One row Single faced static unit – size W1830 x D457 x H2080 – Qty 01 nos
- C---One row double faced movable unit – size W1830 x D914 x H2080 – Qty 06 nos
- B---One row Single faced movable unit – size W1830 x D457 x H2080 – Qty 01 nos

(2)

14ft 5 inch
13ft

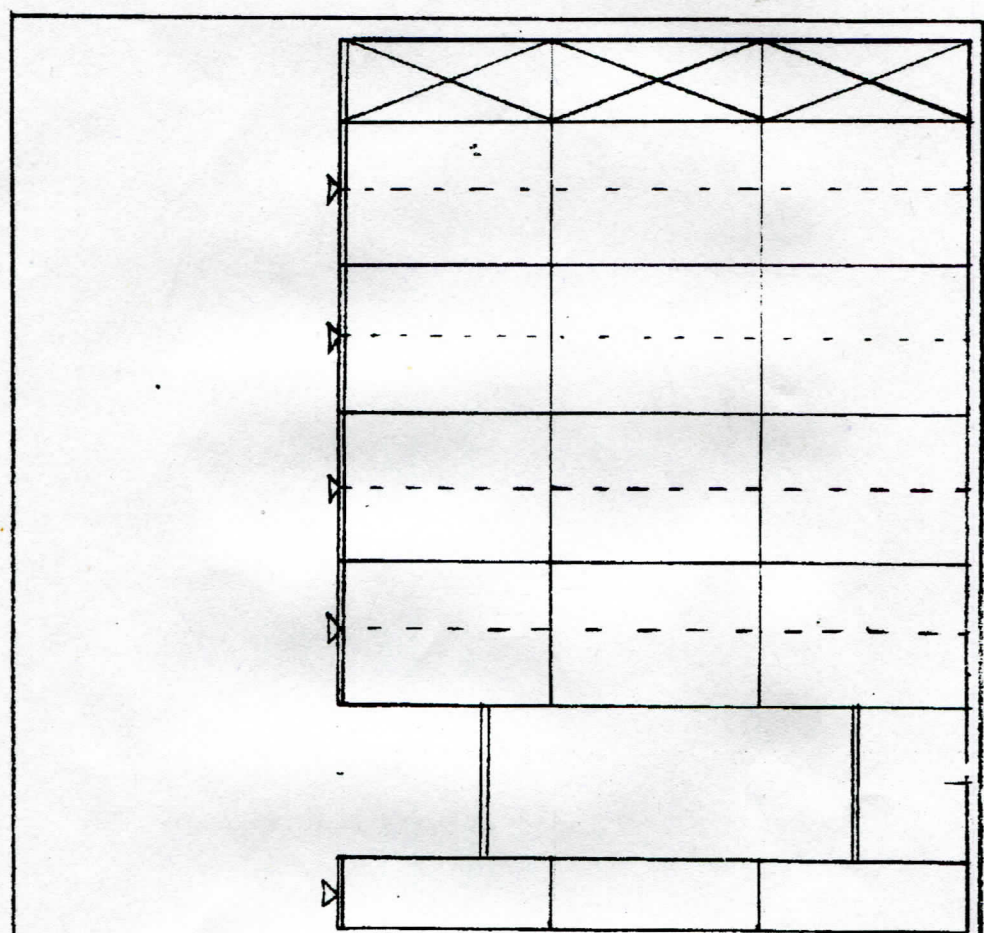


Compactor 3-Bay for QC-T

Detailed as follows :

- A---One row Single faced static unit – size W2745 x D457 x H2080 – Qty 01 nos
- C---One row double faced movable unit – size W2745 x D914 x H2080 – Qty 02 nos
- B---One row Single faced movable unit – size W2745 x D457 x H2080 – Qty 01 nos

2



19'-6"

3 BAY , 30 BODY MECHANICAL

3'-5"

3'

3'

18'-11"

CONTRACTS & BILLING RECORD ROOM (NEW)
AGM(CDX) OFFICE HALL

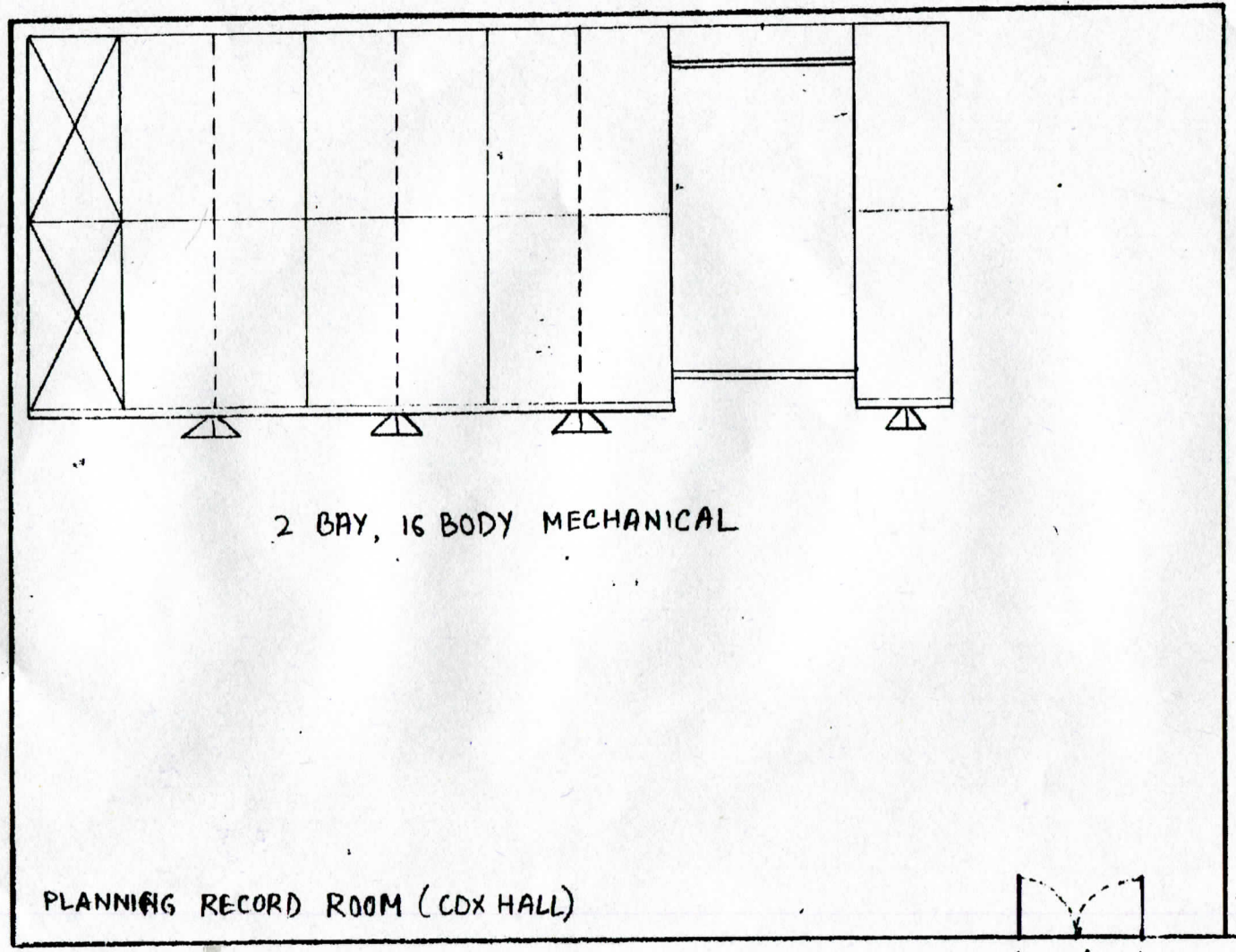
ARJ

JOHN

Ammar

52

~~drawn~~
~~OK~~



2 BAY, 16 BODY MECHANICAL

PLANNING RECORD ROOM (CDX HALL)

3'

8'

18'

(34)

At present

(2)

Appendix-7B