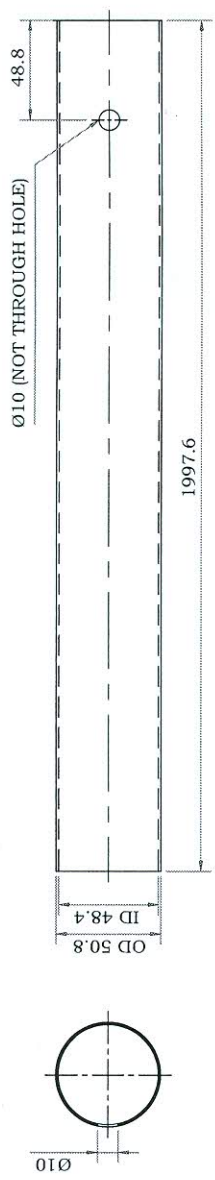


20-1-79-2LS-EI-C
ON DRAWING

First Angle Projection

All dimensions are in MM

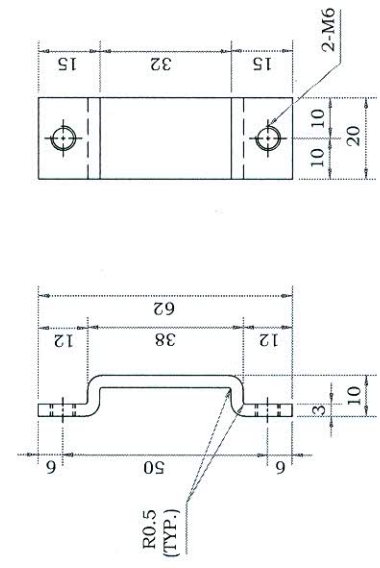


CONTAINER (Pipe OD 50.8, Wall Thickness 1.2)

MATERIAL : SS 202
 QUANTITY : 1 No.

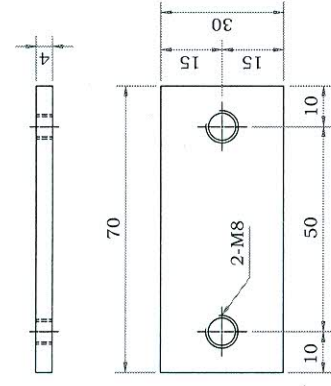
END CAP (TOP)

MATERIAL : SS 202
 QUANTITY : 1 No.



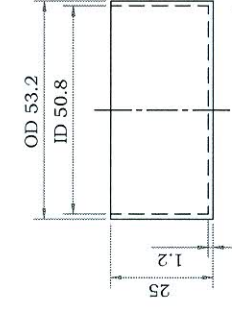
SHADOW COVER BRACKET

MATERIAL : SS 202
 QUANTITY : 3 Nos.



CONTAINER PLATE

MATERIAL : SS 202
 QUANTITY : 2 Nos.



END CAP (BOTTOM)

MATERIAL : SS 202
 QUANTITY : 1 No.

ITEM No.	DESCRIPTION	DRAWING No.	MTL. SPON. MTL. CODE	QTY.	UNIT WT. (Kg.)
<p>TYPE OF PRODUCT OR NAME OF THE CUSTOMER/ PROJECT</p> <p>Field Demonstration of 100 kWp SPV System with Solar Thermal Sun Trackers</p>					
<p>DEPT. FCR CODE 62</p> <p>MATERIAL SS 202</p> <p>SCALE NTS</p> <p>TOTAL WT. (Kg) 3-13-572-62-14-00</p> <p>REF. TO ASST. DRG. 3-13-572-62-14-00</p>					
<p>DEFINITION</p> <p>BEHARAT HEAVY ELECTRICALS LTD. CORPORATE RESEARCH AND DEVELOPMENT</p> <p>APPD. M R PAWAR</p> <p>DRN. KVPR RAO</p> <p>CHK. SURYA ASP</p> <p>NAME SIGN DATE</p>					
<p>TITLE</p> <p>CONTAINER PARTS (LEFT SIDE) (2.7 kWp POLAR AXIS PASSIVE TRACKER)</p> <p>DRAWING No. 3-13-572-62-14-02</p> <p>SHEET No. 0</p>					

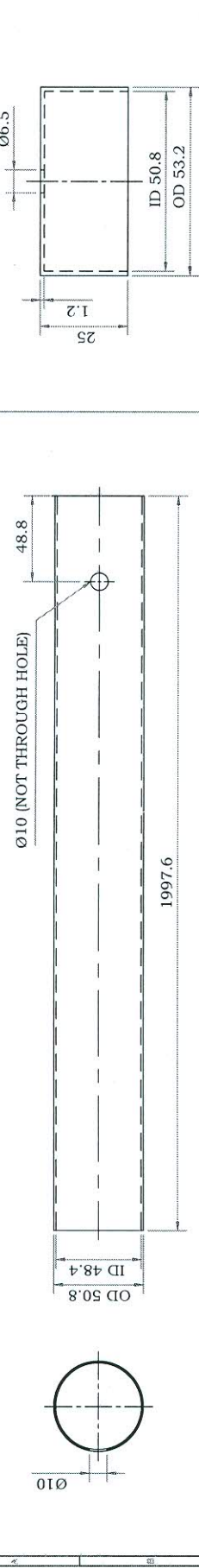
NOTES :

1. MATERIAL SHALL BE STRAIGHTENED BEFORE FABRICATION.
2. ALL JOINTS ARE TO BE WELDED UNLESS OTHERWISE SPECIFIED.
3. END CAP (TOP & BOTTOM) SHALL BE WELDED TO THE CONTAINER AT BOTH THE ENDS (STUDY **DRAWING No. 3-13-572-62-14-00** BEFORE WELDING).
4. CONTAINER PLATE AND SHADOW COVER BRACKET SHALL BE WELDED TO THE CONTAINER AS PER THE DIMENSION AND ORIENTATION SHOWN IN THE **DRAWING No. 3-13-572-62-14-00**.
5. SHARP CORNERS/BURRS SHALL BE REMOVED/SMOOTHENED.

20-51-29-2LS-E1-E
BY ENHANCING

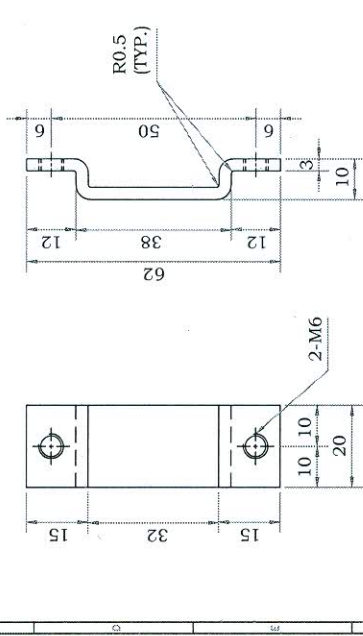
First Angle Projection

All dimensions are in MM

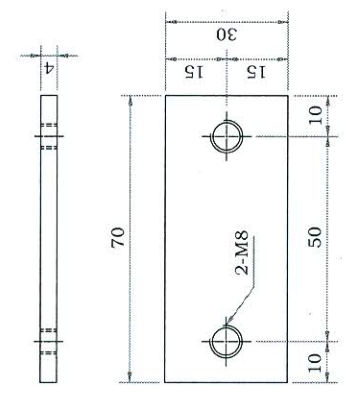


CONTAINER (Pipe OD 50.8, Wall Thickness 1.2)
 MATERIAL : SS 202
 QUANTITY : 1 No.

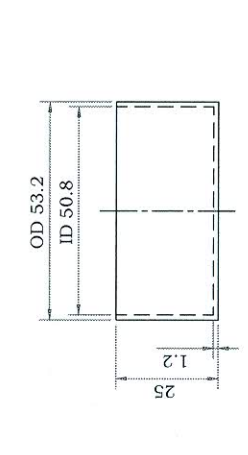
END CAP (TOP)
 MATERIAL : SS 202
 QUANTITY : 1 No.



SHADOW COVER BRACKET
 MATERIAL : SS 202
 QUANTITY : 3 Nos.



CONTAINER PLATE
 MATERIAL : SS 202
 QUANTITY : 2 Nos.



END CAP (BOTTOM)
 MATERIAL : SS 202
 QUANTITY : 1 No.

ITEM No.	DESCRIPTION	DRAWING No.	MTL. SPCN. MTL. CODE	QTY.	UNIT WT. (Kg.)

TYPE OF PRODUCT OR NAME OF THE CUSTOMER/
 PROJECT

Field Demonstration of 100 kWp SPV System with Solar Thermal Sun Trackers

DEPT. FCR CODE 62

SCALE NTS

TOTAL WT. (Kg.)

REF. TO ASST. DRG.

3-13-572-62-15-00

DRAWING No.

3-13-572-62-15-02

CONTAINER PARTS (RIGHT SIDE) (2.7 kWp POLAR AXIS PASSIVE TRACKER)

REV. 0

- NOTES :**
1. MATERIAL SHALL BE STRAIGHTENED BEFORE FABRICATION.
 2. ALL JOINTS ARE TO BE WELDED UNLESS OTHERWISE SPECIFIED.
 3. END CAP (TOP & BOTTOM) SHALL BE WELDED TO THE CONTAINER AT BOTH THE ENDS (STUDY **DRAWING No. 3-13-572-62-15-00** BEFORE WELDING).
 4. CONTAINER PLATE AND SHADOW COVER BRACKET SHALL BE WELDED TO THE CONTAINER AS PER THE DIMENSION AND ORIENTATION SHOWN IN THE **DRAWING No. 3-13-572-62-15-00**.
 5. SHARP CORNERS/BURRS SHALL BE REMOVED/SMOOTHENED.