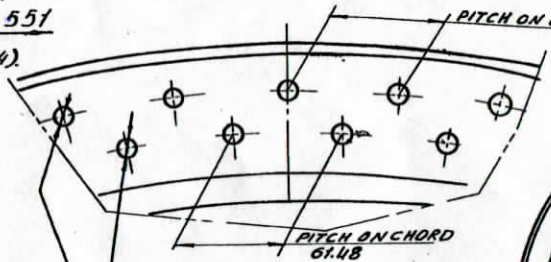
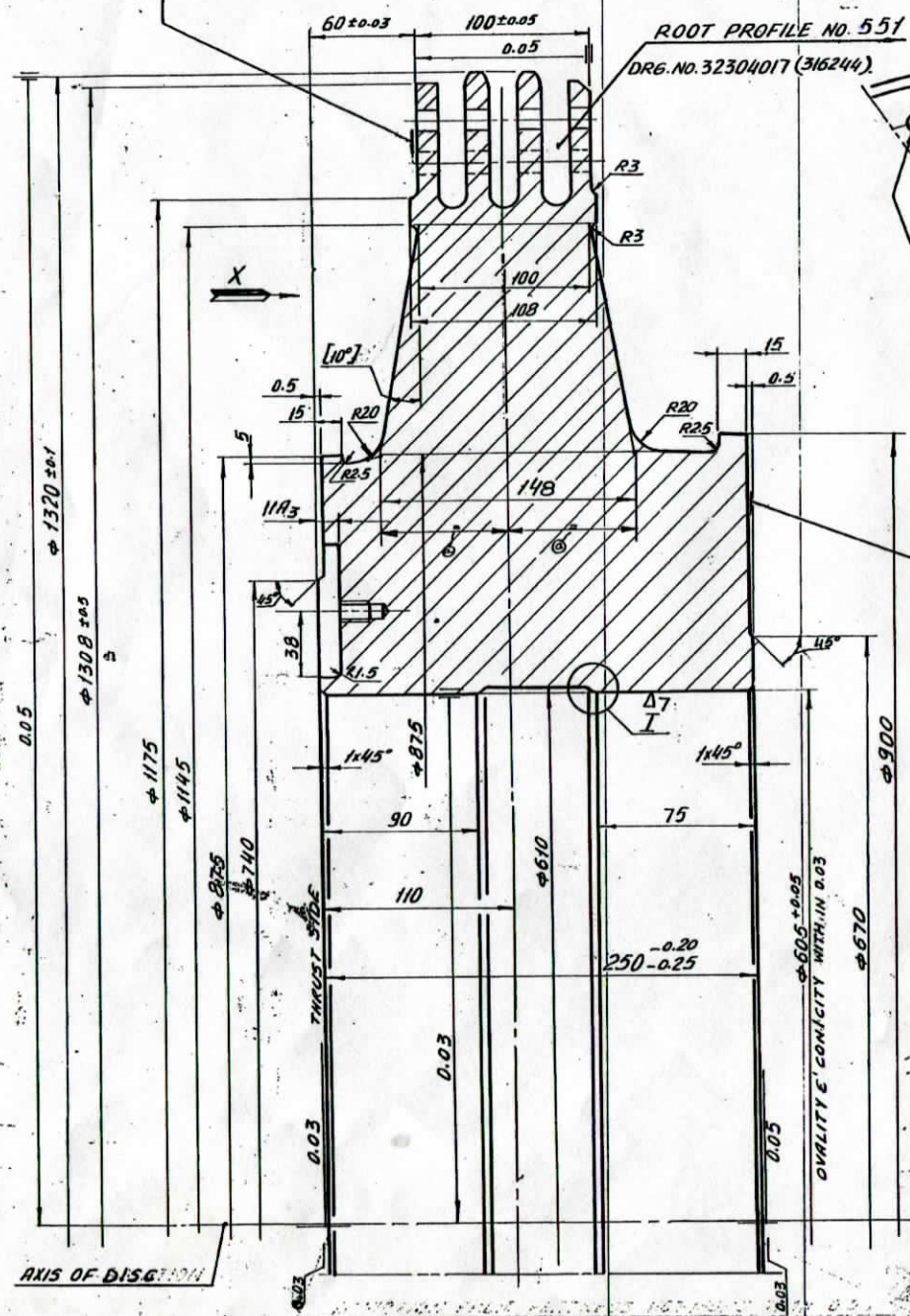


32304013

NONPERPENDICULARITY TO AXIS (FACE PLAY) NOT MORE THAN 0.05.
DEVIATION FROM FLATNESS NOT MORE THAN 0.05.

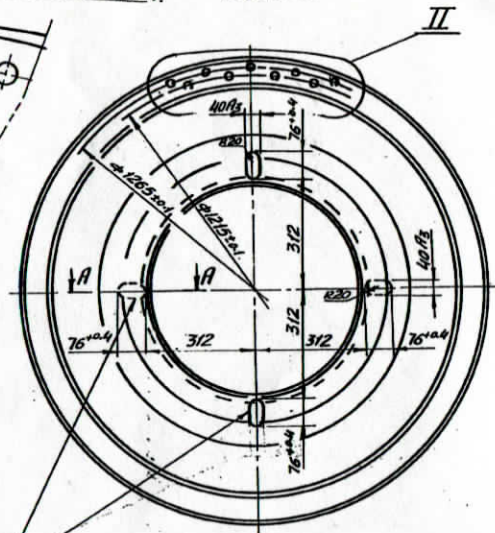
II
MARKING OF HOLES
SCALE 1:2

VIEW X
SCALE 1:10



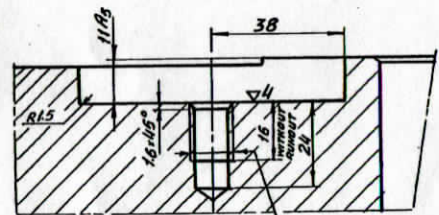
ON EACH DIAMETER 62 HOLES
Φ12. FINAL MACHINING OF HOLES
TO BE DONE TOGETHER WITH
BLADES AS PER ASSY. DRG. OF
BLADING.

ON FACE MARK NUMBER OF
STAGE.

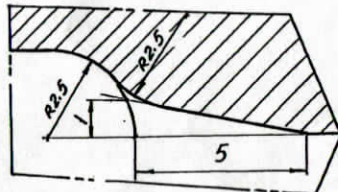


NONAXIALITY OF TWO DIAMETRICALLY
OPPOSITE KEYWAYS NOT MORE THAN 0.05.
NONPARALLELITY WITH RESPECT TO AXIS
NOT MORE THAN 0.03.

SECTION A-A
SCALE 1:1



I
SCALE 10:1



TECHNICAL REQUIREMENTS

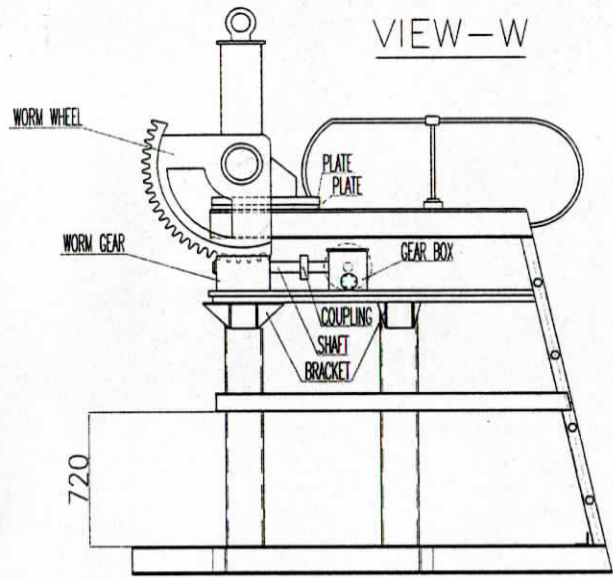
- * FOR DISCS MADE IN Y3TM-35 X HMMZM-XOTY-24-10-003-68
- ULTRASONIC TESTS SHOULD BE DONE FOR WHOLE DISC. PLANT STANDARD NO. 0939.001
- FOR PUTTING ON THE SHAFT HEAT THE DISC UP TO 350°C.

		C-200-130		323040005P	
		DISC		32304013	
		24 th C'28 th STAGE		LETTER WEIGHT SCAL	
				- B 1250 1:2	
				SHEET 1 TOTAL SHEETS	
				KEEP STD	
				SIZE 22	

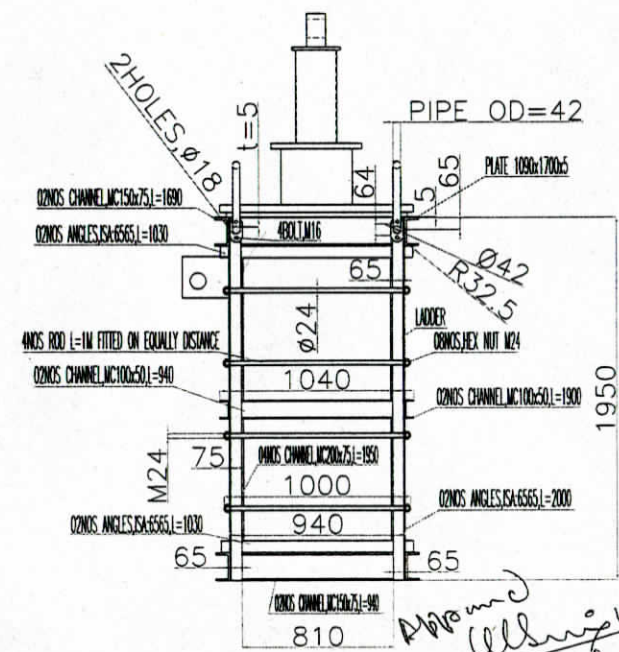
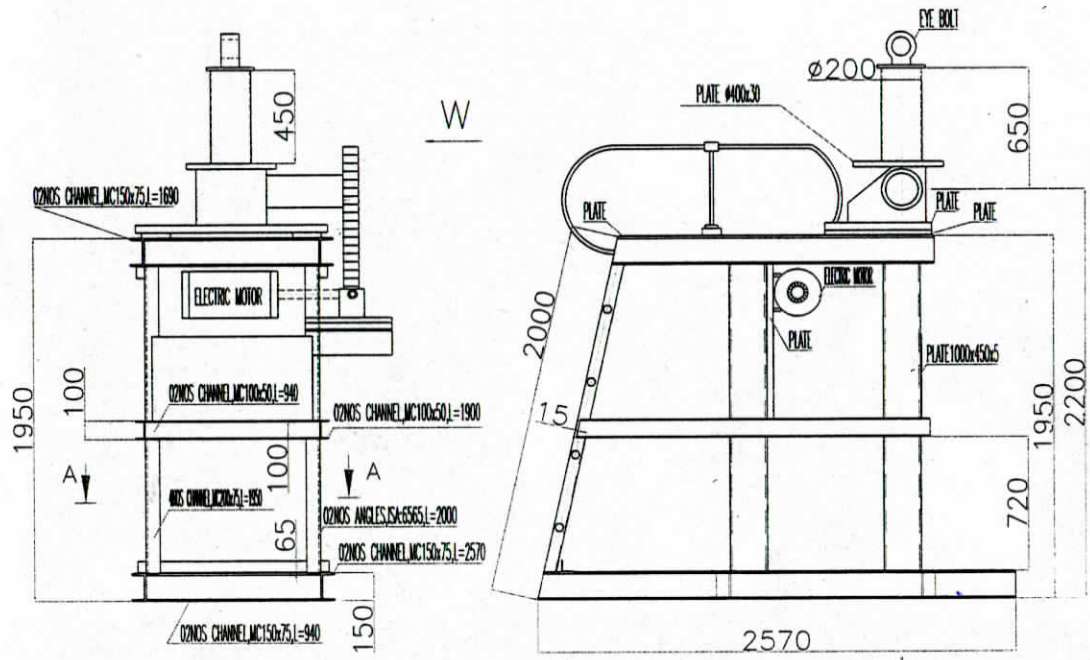
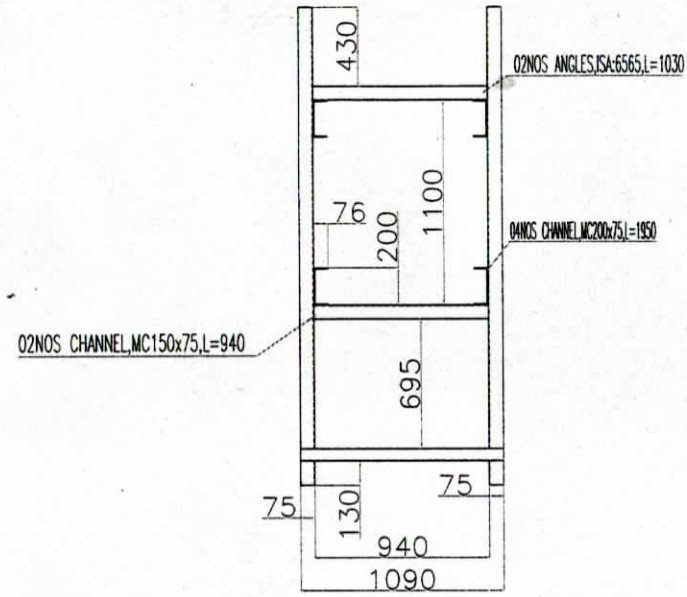
1233466 118202-6

SI-6880 27.172

MET. PENNINGER [Signature] WIZ. STD. CONF. APPROVED [Signature] DATE [Date] APPROVED [Signature] DATE [Date] DRAWN/ITD R. SORPH



SECTION A-A



Approved
 (Signature)
 (K. S. J. / TTX)
 (S. S. J. / TTX)