

Fig 1—Before assembly of diode wheels.

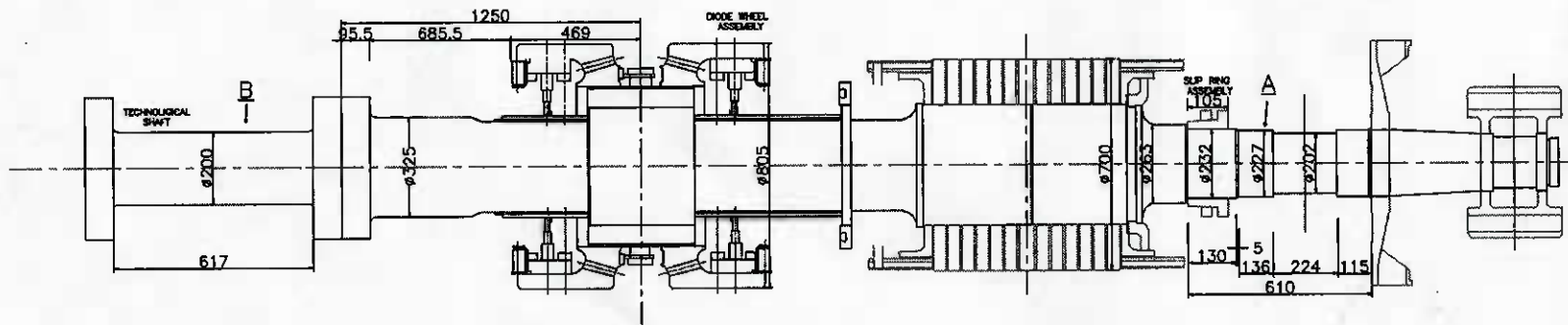


Fig 2—After assembly of diode wheels.

NOTE:

- A—Position at which exciter rotor shaft will rest on driving rotator block as per clause 1.2.1 of technical specification no. EMT-6803.
- B—Position at which exciter rotor shaft will rest on idle rotator block as per clause 1.2.2 of technical specification no. EMT-6803.

EMT-6803(a)
EXCITER ROTOR ASSEMBLY (THRI)

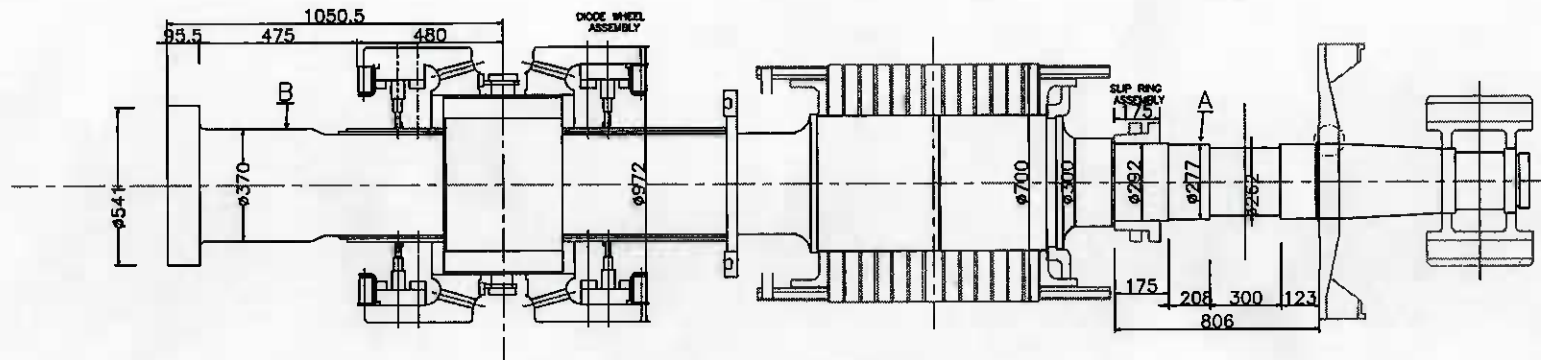


Fig 1—Before assembly of diode wheels.

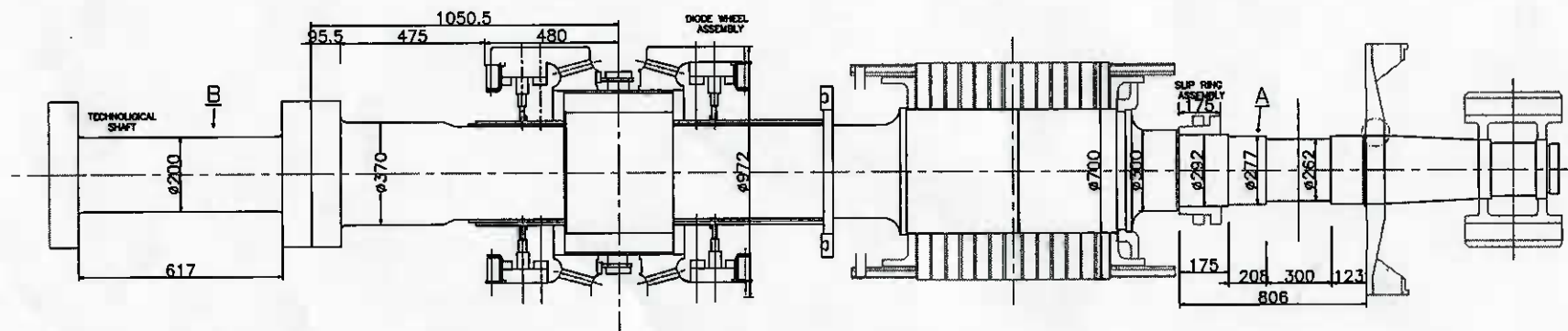


Fig 2—After assembly of diode wheels.

NOTE:

- A—Position at which exciter rotor shaft will rest on driving rotator block as per clause 1.2.1 of technical specification no. EMT-6803.
- B—Position at which exciter rotor shaft will rest on idle rotator block as per clause 1.2.2 of technical specification no. EMT-6803.

EMT-6803(b) :
EXCITER ROTOR ASSEMBLY (THDF,500MW)