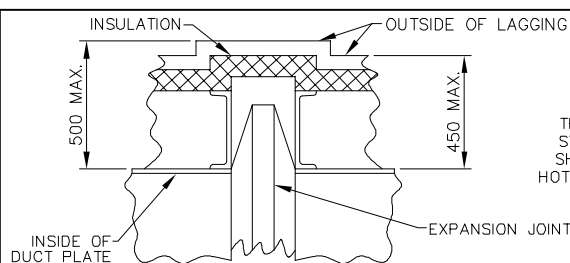


NOTES:

- FOR GENERAL NOTES, REFERENCE DRAWINGS, LEGEND, ETC. (NTPC DWG. NO. 9575-102-01-TR-PWM-B-003) SEE DWG. NO. 00212-1E0001
- FOR FURNACE AND BACKPASS WALL OPENING LOCATIONS, SEE 00212-1E0002 (NTPC DWG. NO. 9575-102-01-TR-PWM-B-002-SH2) AND 00212-1E0014 (NTPC DWG. NO. 9575-102-01-TR-PWM-L-008)
- THIS DRAWING IS NOT SHOWING LEGGERS AND CRANES EQUIPMENTS. SEE DRAWING NO. 00212-1E0005 FOR LEGGERS AND CRANES. ALSTOM DRAWING NOS.: 00212-1E0065 THRU 00212-1E0090. NTPC DRAWING NOS.: 9575-102-01-TR-PWM-B-010-(SH1 THRU 26)

SIDE ELEVATION '03-03'
(LOOKING NORTH)

00	FOR REVIEW AND APPROVAL	27JUN12	J.C.	R.A.V.	P.T.S.
REV	DESCRIPTION	DATE	DRAWN	CHECKED	APPROD
			BY	BY	BY
			1711 & 1712		
NTPC DRG NO: 9575-102-01-TR-PWM-B-002-SH3 CUSTOMER: NTPC LIMITED (A Government of India Enterprise) PROJECT: MOUDA SUPER THERMAL POWER PROJECT STAGE-II (2 X 660MW) STEAM GENERATOR PACKAGE BHARAT HEAVY ELECTRICALS LIMITED BOILER PLANT UNIT, TIRUCHIRAPALLI-620014 ALL DIMENSIONS ARE IN MILLIMETERS BHEL DRAWING NO. REV. PROJECTION SCALE 1:150 0-00-022-76240 00					
CONTRACT NO. 00212 UNIT NO'S. 3 & 4 GENERAL ARRANGEMENT - SIDE ELEVATION '03-03' FOR STEAM GENERATOR MOUDA SUPER THERMAL POWER PROJECT STAGE II - 2 X 660 MW					
THIS DRAWING IS THE PROPERTY OF ALSTOM Power Inc. WINDSOR, CONNECTICUT 06095 SCALE: 1:150 DRAWN BY: J.C. DATE: 01AUN2012 CHECKED BY: R.A.V. DATE: 01AUN2012 APPROVED BY: P.T.S. DATE: 01AUN2012 WBS CODE: 68 88 8103					
QSGM	THIS DOCUMENT CONTAINS PROPRIETARY DATA AND MAY NOT BE REPRODUCED OR DISCLOSED WITHOUT PERMISSION OF ALSTOM Power Inc.				DRAWING NO. 00212-1E0003 REV. 00



TYPICAL EXPANSION JOINT AND DUCT INSULATION WITH LAGGING
 THIS TYPICAL DETAIL INDICATES MAXIMUM DIMENSIONS INCLUDING STIFFENERS, INSULATION AND LAGGING FOR ALL HOT DUCTS AND SHOULD BE USED IN DETERMINING PROPER CLEARANCES OF BOTH HOT & COLD DUCTS FROM STRUCTURAL AND OTHER EQUIPMENT, ETC.

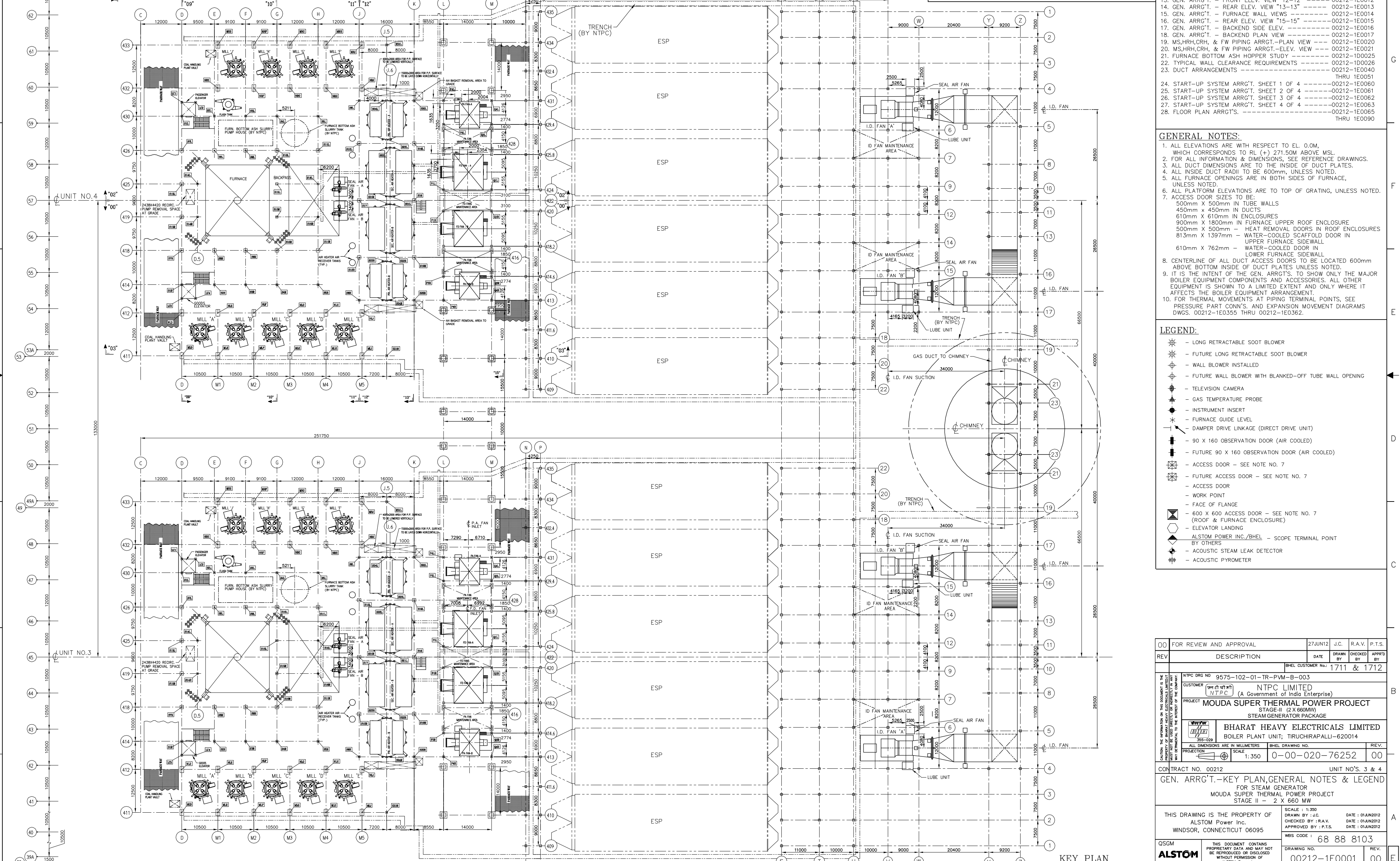
DESCRIPTION OF UNIT:
 1 - 660 MW (2120 T/HR) [4,629,660 LBS/HR] ONCE THROUGH SUPER CRITICAL, HAVING TWO PASS, SPIRAL WATER WALL TUBE, TOP SUPPORTED, SINGLE REHEAT, TANGENTIAL CORNER FIRED FURNACE WITH DIRECT PULVERIZED COAL FIRING, BALANCE DRAFT, RADIANT DRY BOTTOM, AND SUITABLE FOR OUTDOOR INSTALLATION
 FURNACE SIZE: 20726.4 WIDTH X 18592.8 DEPTH
 42.2 O.D. TUBES ON 54.0 CENTERS - FURNACE SPIRAL WALL
 38.1 O.D. TUBES ON 50.8 CENTERS - FURNACE VERTICAL WALL
 NON-PRESSURIZED ROOF ENCLOSURE
 FIRING EQUIPMENT: TT 812 WINDBOX
 PULVERIZED COAL; (9) HP1103 MILLS W/STATIC CLASSIFIERS

INDEX DRAWINGS:

1. PRESSURE PARTS ARRANGEMENTS	00212-1E0100
2. PIPING MISC. P.P. EQUIP.	00212-1E0300
3. PRESS. PARTS CONN.-EXP. MOVEMENT DIAG.	00212-1E0355
4. STRUCTURAL STEEL ARRANGEMENTS	00212-1E2001
5. DUCT ARRANGEMENTS	00212-1E2500
6. BUCKSTAY ARRANGEMENTS	00212-1E2901
7. P.P. HANGERS AND SUPPORTS ARRGT'S.	00212-1E3500
8. FUEL PIPE ARRANGEMENTS	00212-1E4000
9. WINDBOX ARRANGEMENTS	00212-1E4100
10. SEAL AIR SYSTEM PIPING ARRANGEMENT	00212-1E4408
11. SCANNER AIR SYSTEM ARRANGEMENT	00212-1E4410
12. P & ID'S	00212-1E8501
13. HP-1103 BOWL MILL ARRANGEMENT	E-PLVE-1003

REFERENCE DRAWINGS:

1. GEN. ARRGT. - SIDE ELEV. VIEW "00-00"	00212-1E0000
2. GEN. ARRGT. - KEY PLAN, GEN. NOTES & LEGEND	00212-1E0001
3. GEN. ARRGT. - SIDE ELEV. VIEW "02-02"	00212-1E0002
4. GEN. ARRGT. - SIDE ELEV. VIEW "03-03"	00212-1E0003
5. GEN. ARRGT. - PLAN VIEW "04-04"	00212-1E0004
6. GEN. ARRGT. - PLAN VIEW "05-05"	00212-1E0005
7. GEN. ARRGT. - PLAN VIEW "06-06"	00212-1E0006
8. GEN. ARRGT. - PLAN VIEW "07-07"	00212-1E0007
9. GEN. ARRGT. - PLAN VIEW "08-08"	00212-1E0008
10. GEN. ARRGT. - FRONT ELEV. VIEW "09-09"	00212-1E0009
11. GEN. ARRGT. - REAR ELEV. VIEW "10-10"	00212-1E0010
12. GEN. ARRGT. - REAR ELEV. VIEW "11-11"	00212-1E0011
13. GEN. ARRGT. - FRONT ELEV. VIEW "12-12"	00212-1E0012
14. GEN. ARRGT. - REAR ELEV. VIEW "13-13"	00212-1E0013
15. GEN. ARRGT. - FURNACE WALL VIEWS	00212-1E0014
16. GEN. ARRGT. - REAR ELEV. VIEW "15-15"	00212-1E0015
17. GEN. ARRGT. - BACKEND SIDE ELEV.	00212-1E0016
18. GEN. ARRGT. - REAR ELEV. VIEW	00212-1E0017
19. MS,HRH,CRH, & FW PIPING ARRGT.-PLAN VIEW	00212-1E0020
20. MS,HRH,CRH, & FW PIPING ARRGT.-ELEV. VIEW	00212-1E0021
21. FURNACE BOTTOM ASH HOPPER STUDY	00212-100025
22. TYPICAL WALL CLEARANCE REQUIREMENTS	00212-100026
23. DUCT ARRANGEMENTS	00212-1E0040



GENERAL NOTES:

- ALL ELEVATIONS ARE WITH RESPECT TO EL. 0.0M, WHICH CORRESPONDS TO RL (+) 271.50M ABOVE MSL.
- FOR ALL INFORMATION & DIMENSIONS, SEE REFERENCE DRAWINGS.
- ALL DUCT DIMENSIONS ARE TO THE INSIDE OF DUCT PLATES.
- ALL INSIDE DUCT RADI TO BE 600mm, UNLESS NOTED.
- ALL FURNACE OPENINGS ARE IN BOTH SIDES OF FURNACE, UNLESS NOTED.
- ALL PLATFORM ELEVATIONS ARE TO TOP OF GRATING, UNLESS NOTED.
- ACCESS DOOR SIZES TO BE:
 - 500mm X 500mm IN TUBE WALLS
 - 450mm X 450mm IN DUCTS
 - 610mm X 610mm IN ENCLOSURES
 - 900mm X 1800mm IN FURNACE UPPER ROOF ENCLOSURE
 - 500mm X 500mm HEAT REMOVAL DOORS IN ROOF ENCLOSURES
 - 813mm X 1397mm - WATER-COOLED SCAFFOLD DOOR IN UPPER FURNACE SIDEWALL
 - 610mm X 762mm - WATER-COOLED DOOR IN LOWER FURNACE SIDEWALL
- CENTRELINE OF ALL DUCT ACCESS DOORS TO BE LOCATED 600mm ABOVE BOTTOM INSIDE OF DUCT PLATES UNLESS NOTED.
- IT IS THE INTENT OF THE GEN. ARRGT'S. TO SHOW ONLY THE MAJOR BOILER EQUIPMENT COMPONENTS AND ACCESSORIES. ALL OTHER EQUIPMENT IS SHOWN TO A LIMITED EXTENT AND ONLY WHERE IT AFFECTS THE BOILER EQUIPMENT ARRANGEMENT.
- FOR THERMAL MOVEMENTS AT PIPING TERMINAL POINTS, SEE PRESSURE PART CONN'S. AND EXPANSION MOVEMENT DIAGRAMS DWGS. 00212-1E0355 THRU 00212-1E0362.

LEGEND:

- LONG RETRACTABLE SOOT BLOWER
- FUTURE LONG RETRACTABLE SOOT BLOWER
- WALL BLOWER INSTALLED
- FUTURE WALL BLOWER WITH BLANKED-OFF TUBE WALL OPENING
- TELEVISION CAMERA
- GAS TEMPERATURE PROBE
- INSTRUMENT INSERT
- FURNACE GUIDE LEVEL
- DAMPER DRIVE LINKAGE (DIRECT DRIVE UNIT)
- 90 X 160 OBSERVATION DOOR (AIR COOLED)
- FUTURE 90 X 160 OBSERVATION DOOR (AIR COOLED)
- ACCESS DOOR - SEE NOTE NO. 7
- ACCESS DOOR
- WORK POINT
- FACE OF FLANGE
- 600 X 600 ACCESS DOOR - SEE NOTE NO. 7 (ROOF & FURNACE ENCLOSURE)
- ELEVATOR LANDING
- ALSTOM POWER INC./BHEL - SCOPE TERMINAL POINT BY OTHERS
- ACOUSTIC STEAM LEAK DETECTOR
- ACOUSTIC PYROMETER

00 FOR REVIEW AND APPROVAL	27 JUN 12	J.C.	R.A.V.	P.T.S.	
REV	DESCRIPTION	DATE	DRAWN BY	CHECKED BY	APPROV BY
					1711 & 1712
NTPC DRG NO 9575-102-01-TR-PVM-B-003 CUSTOMER: NTPC LIMITED (A Government of India Enterprise) PROJECT: MOUDA SUPER THERMAL POWER PROJECT STAGE-II (2 X 660MW) STEAM GENERATOR PACKAGE BHARAT HEAVY ELECTRICALS LIMITED BOILER PLANT UNIT; TRUCHIRAPALLI-620014 ALL DIMENSIONS ARE IN MILLIMETERS SCALE: 1:350 BHEL DRAWING NO. 00-00-020-76252 REV. 00					
CONTRACT NO. 00212 UNIT NO'S. 3 & 4 GEN. ARRGT.-KEY PLAN, GENERAL NOTES & LEGEND FOR STEAM GENERATOR MOUDA SUPER THERMAL POWER PROJECT STAGE II - 2 X 660 MW					
THIS DRAWING IS THE PROPERTY OF ALSTOM Power Inc. WINDSOR, CONNECTICUT 06095 SCALE: 1:350 DRAWN BY: J.C. CHECKED BY: R.A.V. APPROVED BY: P.T.S. DATE: 01/JUN/2012 DATE: 01/JUN/2012 DATE: 01/JUN/2012 MBS CODE: 68 88 8103					
QSGM	THIS DOCUMENT CONTAINS PROPRIETARY DATA AND MAY NOT BE REPRODUCED OR DISCLOSED WITHOUT PERMISSION OF ALSTOM Power Inc.				REV.
ALSTOM	DRAWING NO. 00212-1E0001				00

