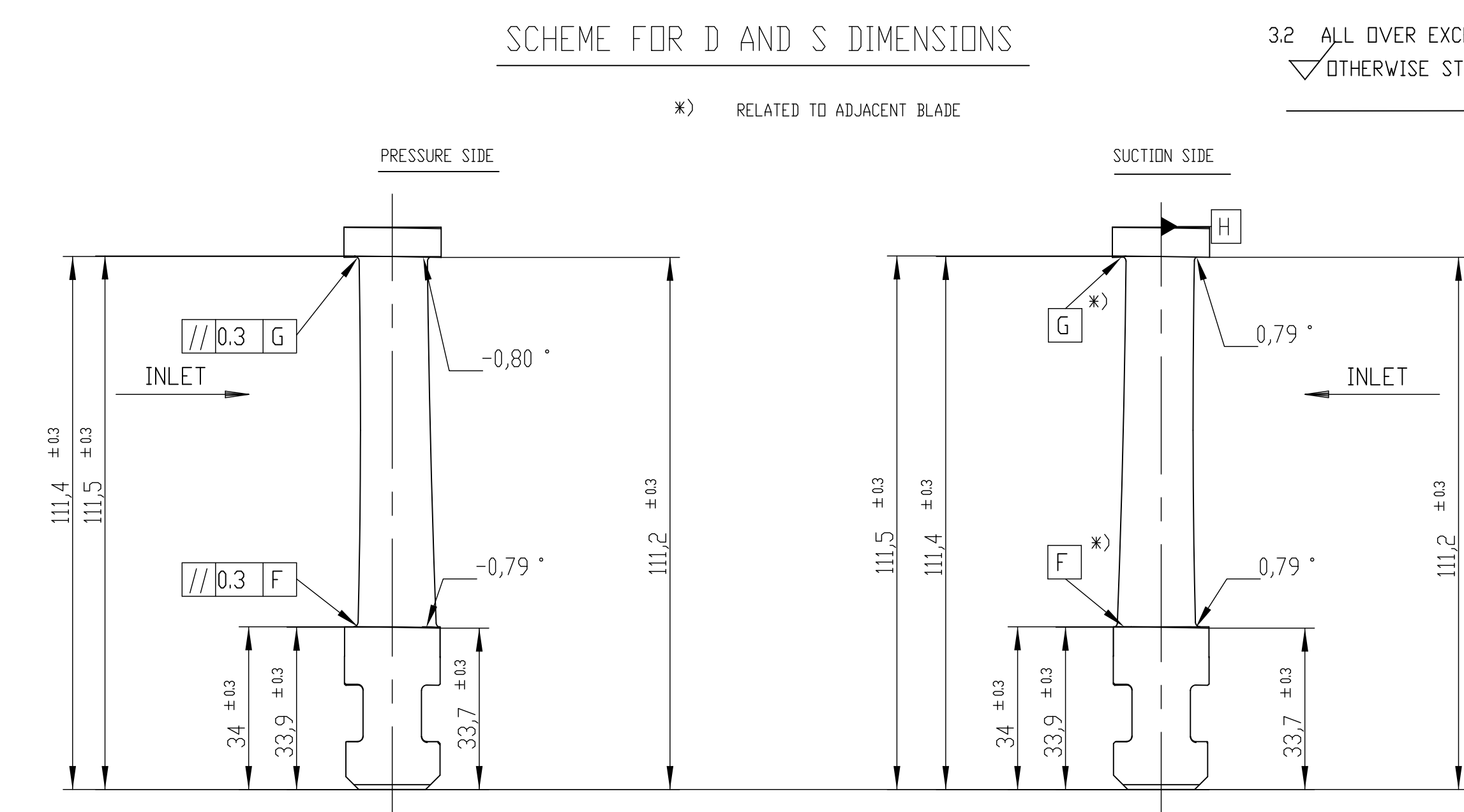
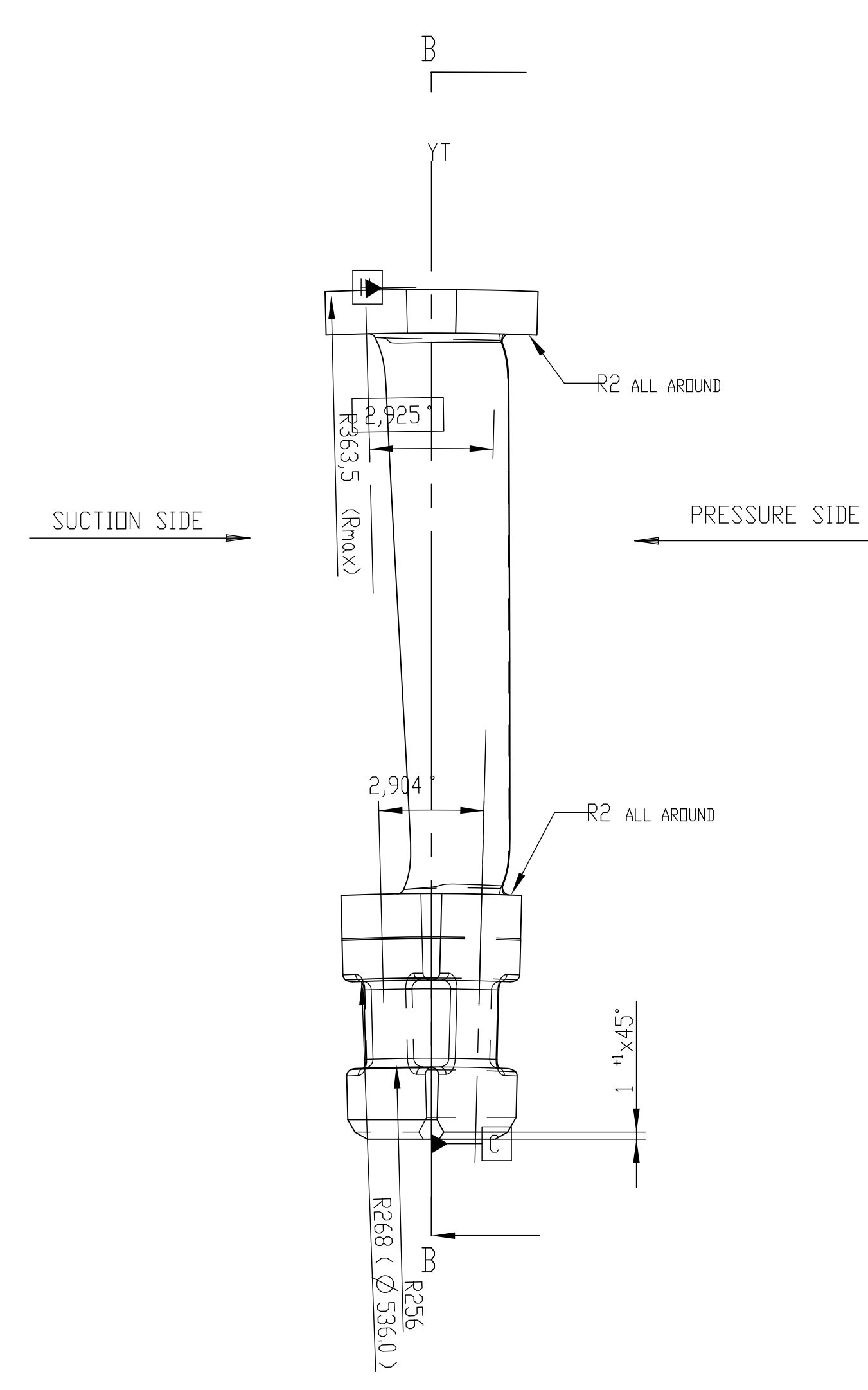
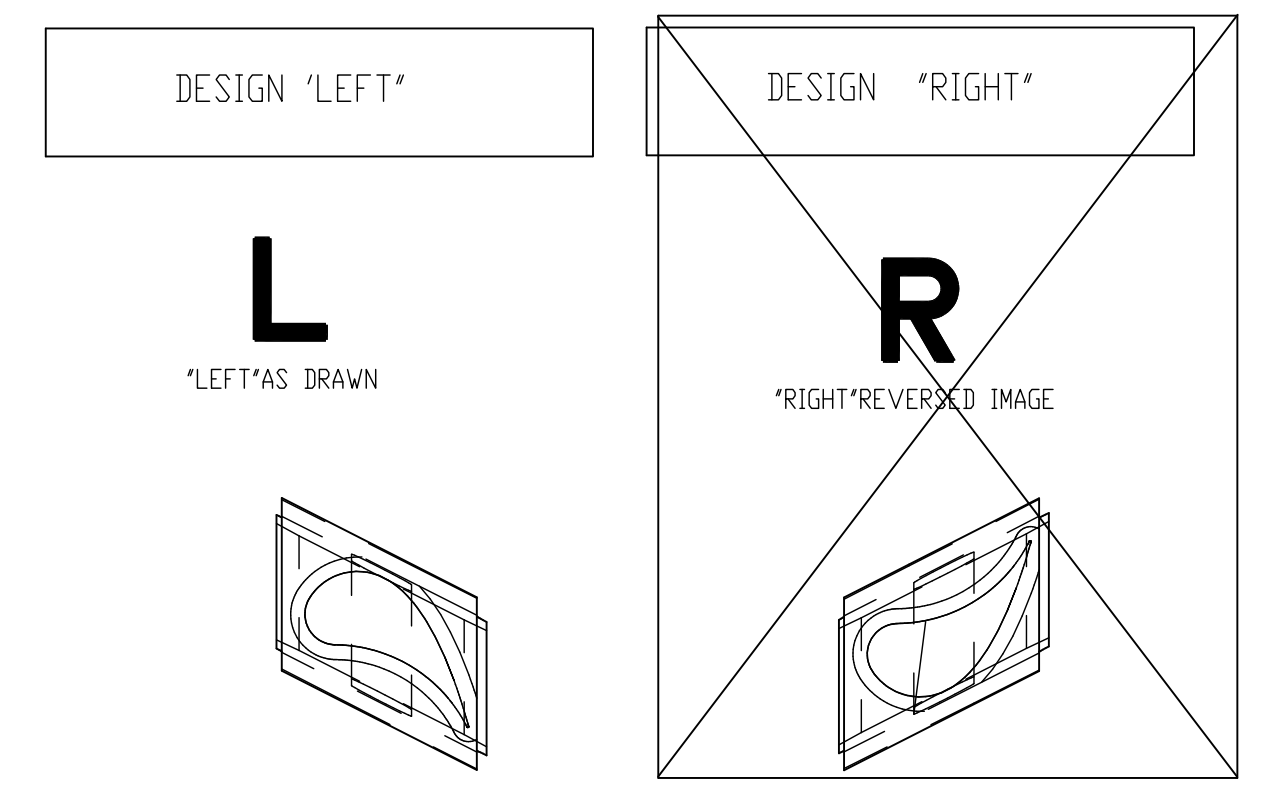
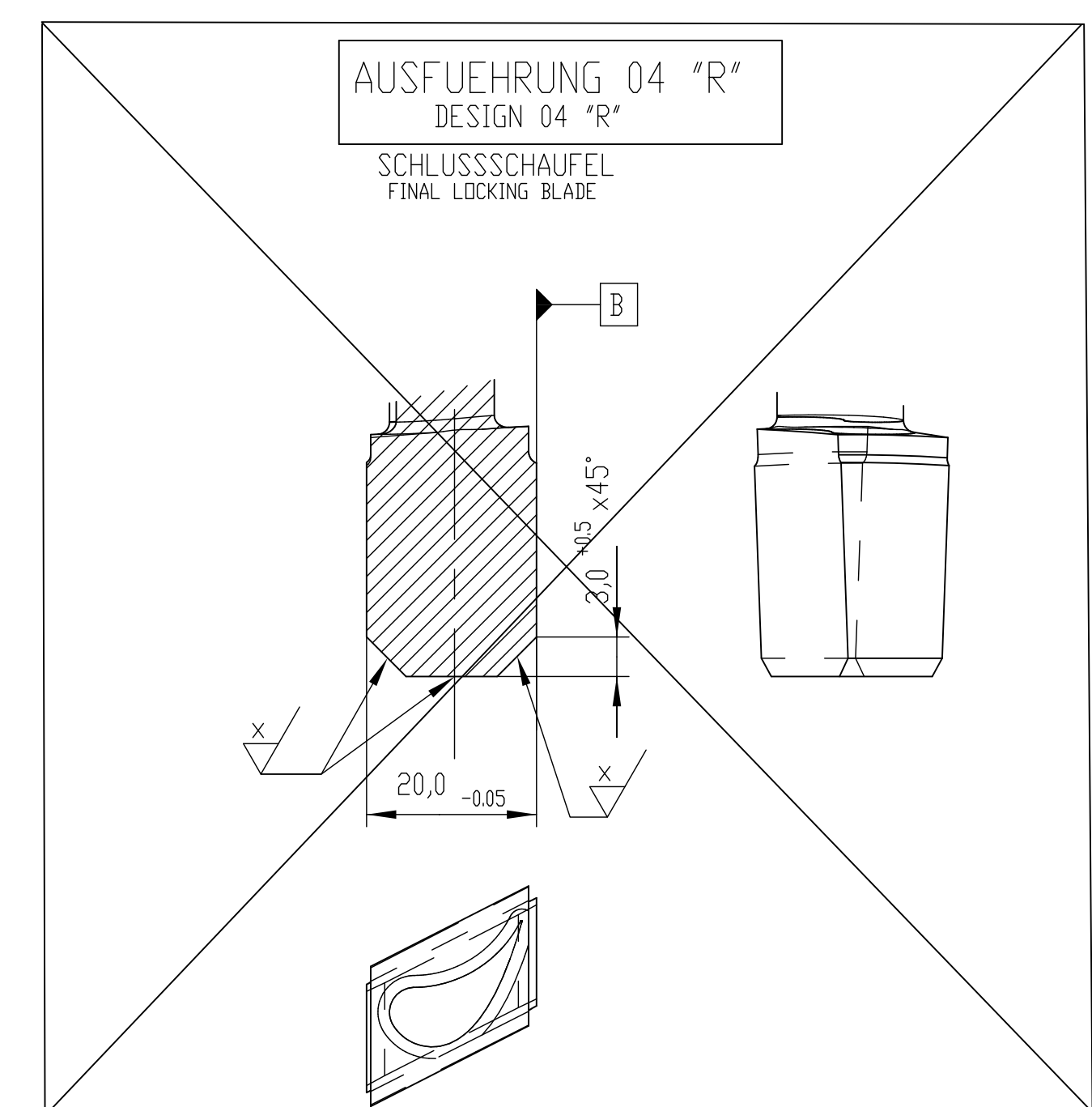
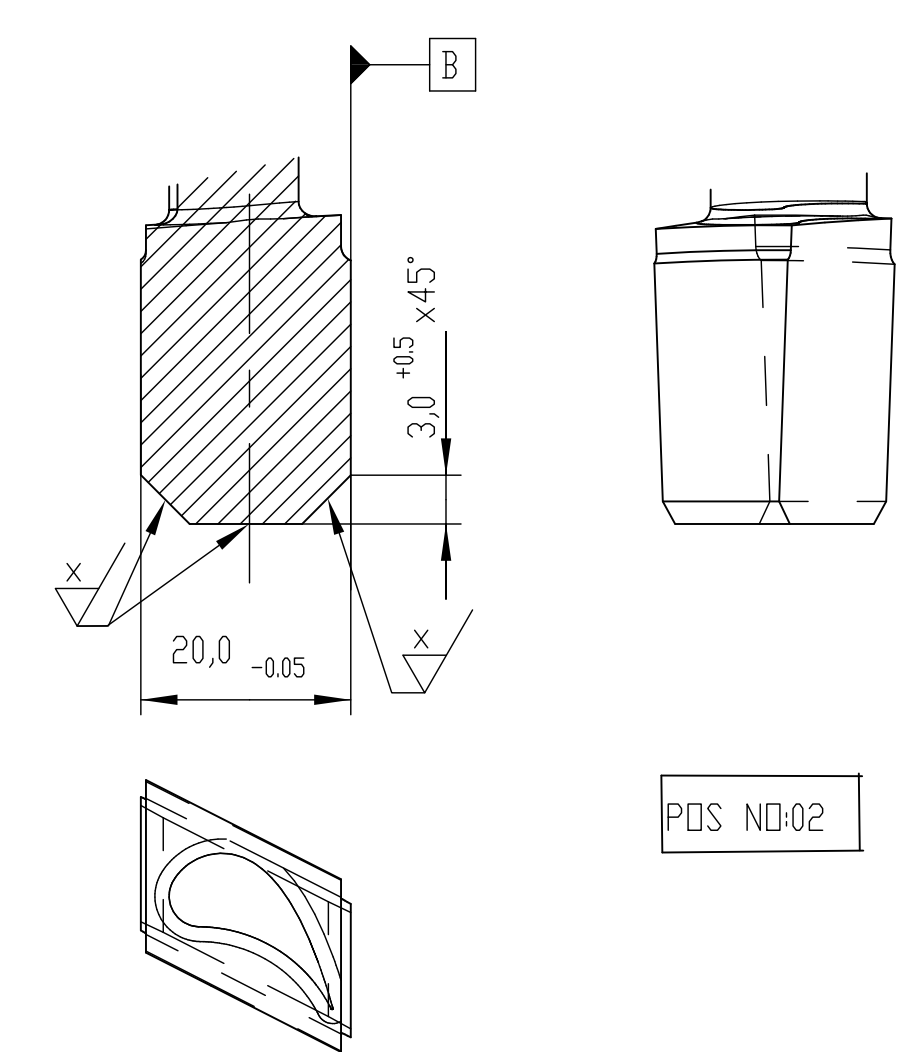


DESIGN 'LEFT'

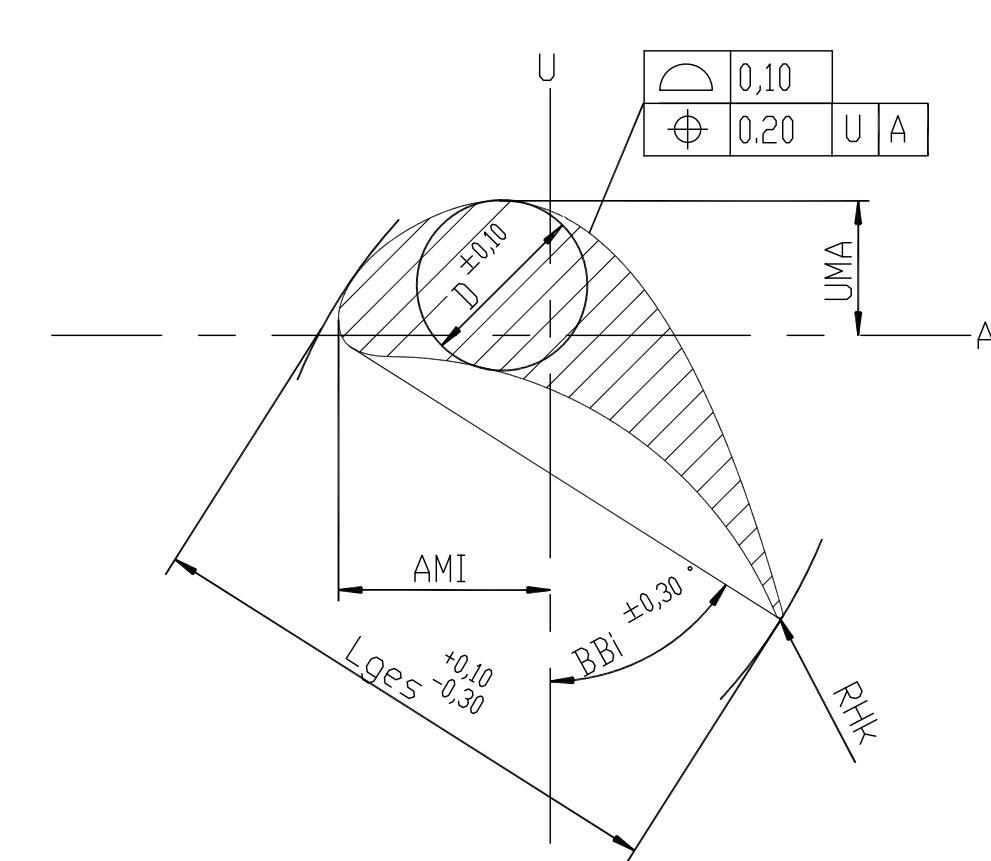
[illegible]

BLADE SEEN IN THE DIRECTION OF STEAM FLOW

AUSFUEHRUNG 03 "L"  
DESIGN 03 "L"  
SCHLUSSCHAUFEL  
FINAL LOCKING BLADE

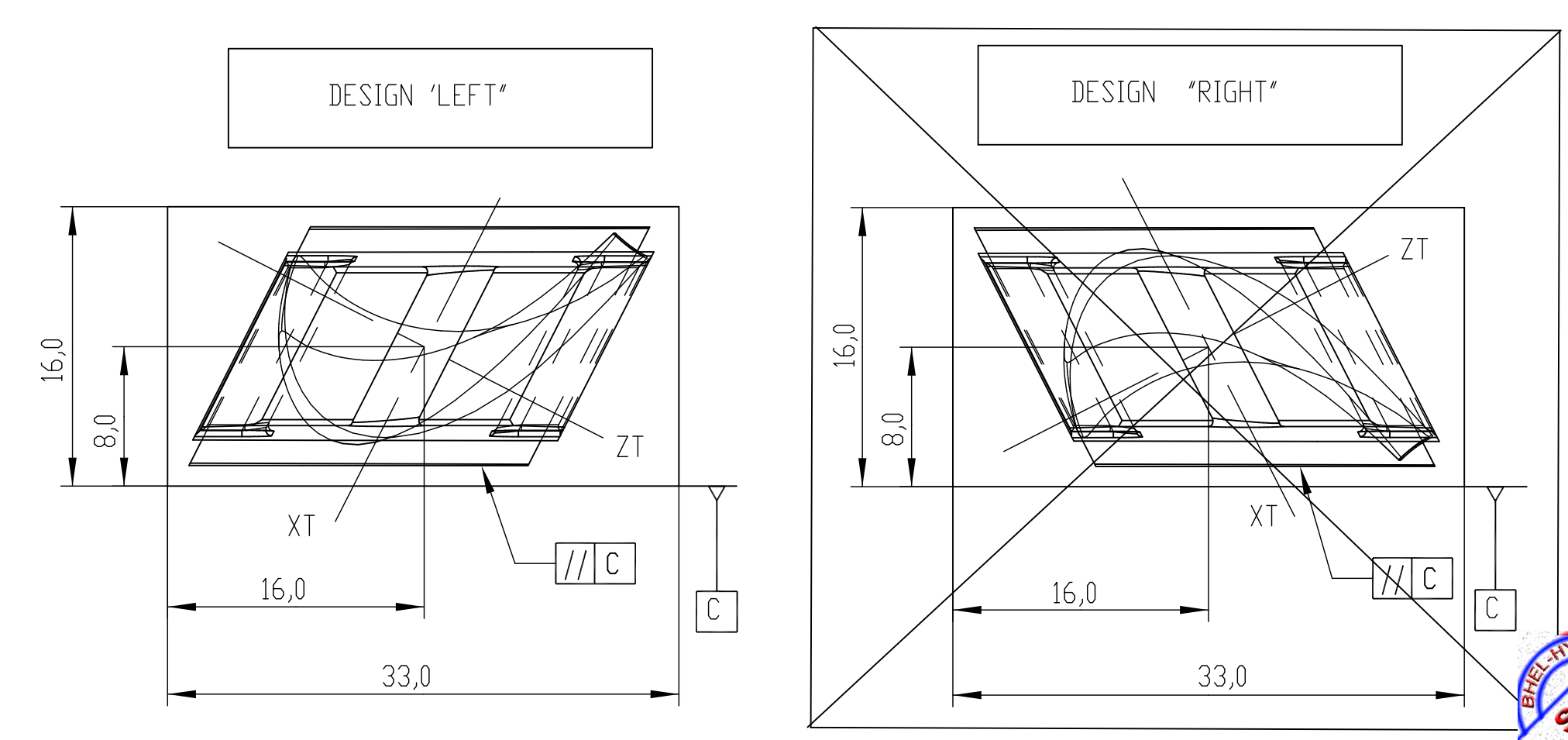


## TECHNICAL REQUIREMENTS



TOLERANCES


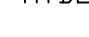
RAW PART IN POSITION OF CENTERING (WITHOUT SCALE)  
(RELATED TO MINIMAL DIMENSION)



NOTES:

1. STRAK NUMBER: 80196
2. NUMBER OF BLADES/ROW: 127  
(INCLUDING LOCK BLADE)

06 (LEFT)	06
ROW NO.	VAR

TYPE OF PRODUCT OR										NAME OF CUSTOMER/PROJECT	
 <b>BHARAT HEAVY ELECTRICALS LTD</b> HYDRABAD											
REF. ITD.		UNITD. DIMS. OR CMT		 SCALE NTS		WEIGHT (KGS)		REF. TO ASSY. DRG.		ITEM NO.	
CODE 05						0.117		-N-A-		-N-A-	
TITLE								DRAWING NO.		REV.	
MOVING BLADE-LEFT								0-303-15-00018		00	
S-999-R2-TR19/078925								SHT. NO. 06		NO. OF SHT. 41	

[illegible]