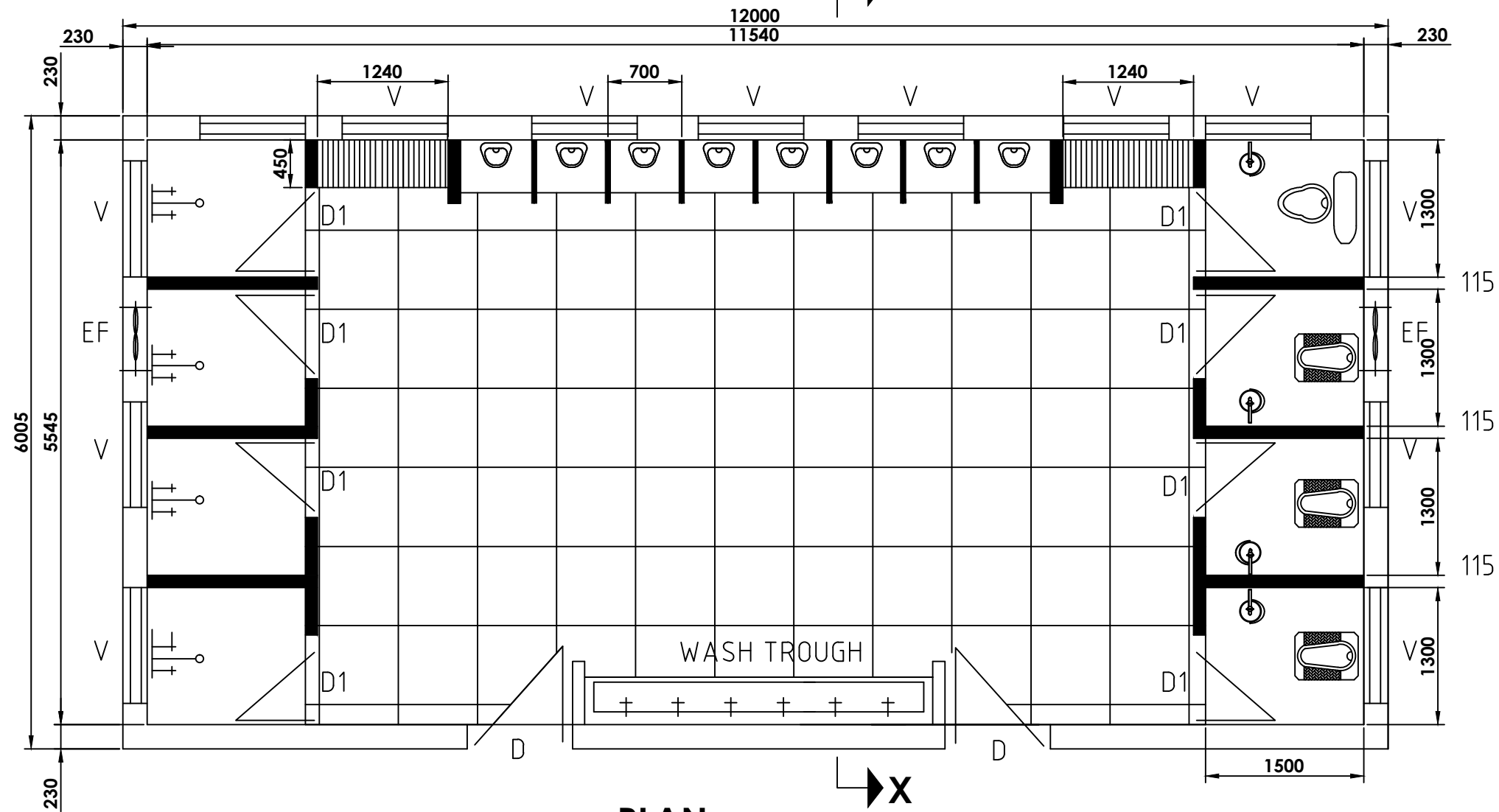
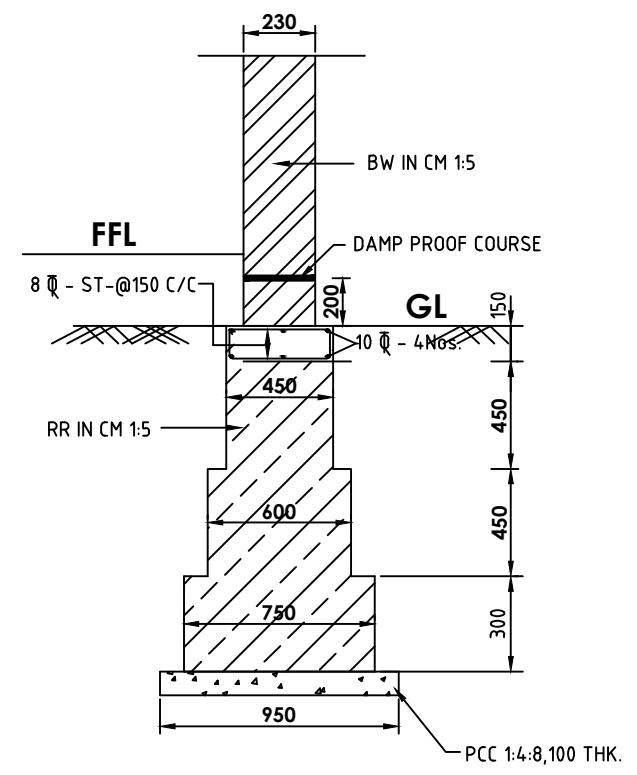


ALL DIMENSIONS ARE IN MILLIMETERS



PLAN

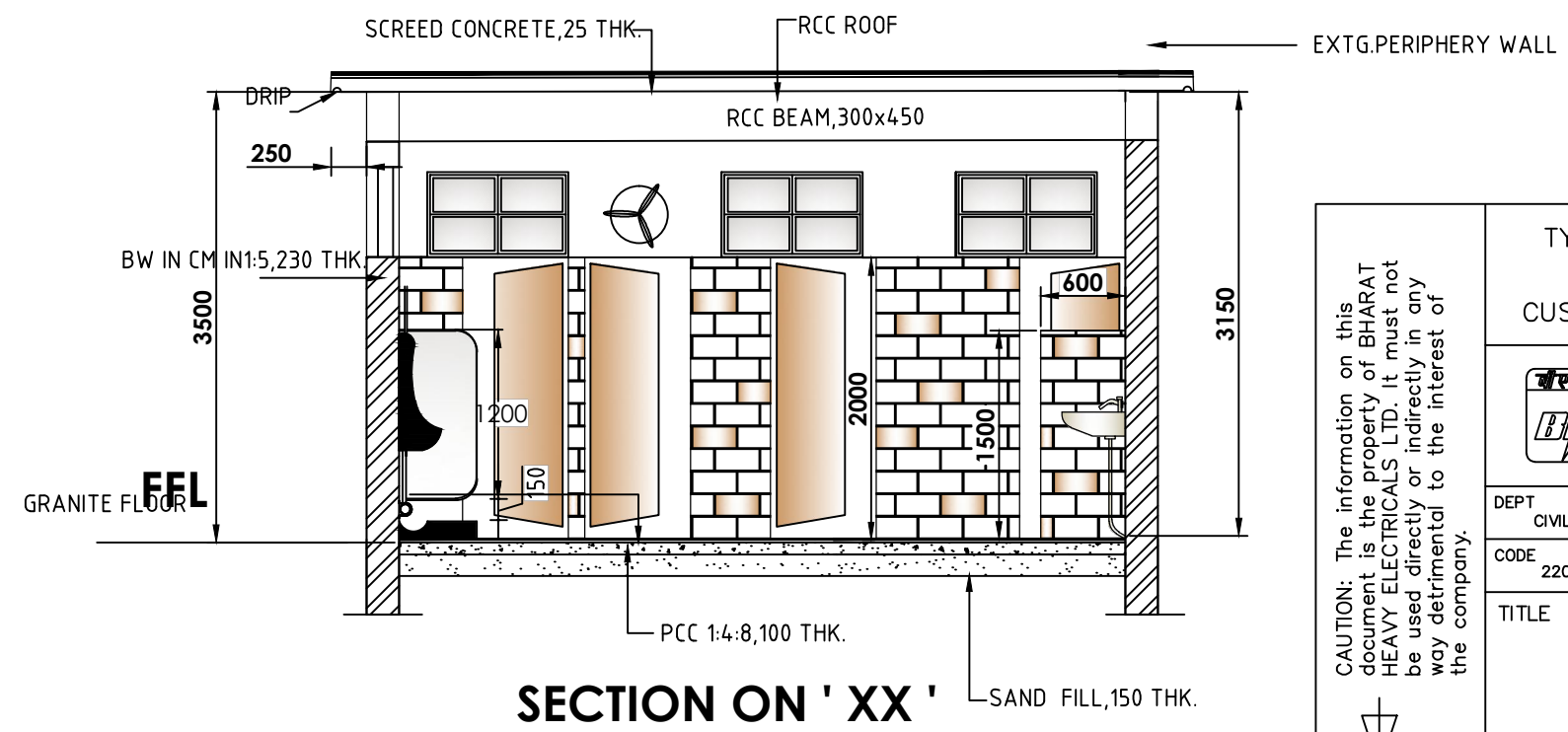


FOUNDATION DETAILS

TENDER PURPOSE ONLY

- NOTES:
1. ALL DIMENSIONS ARE IN 'mm'.

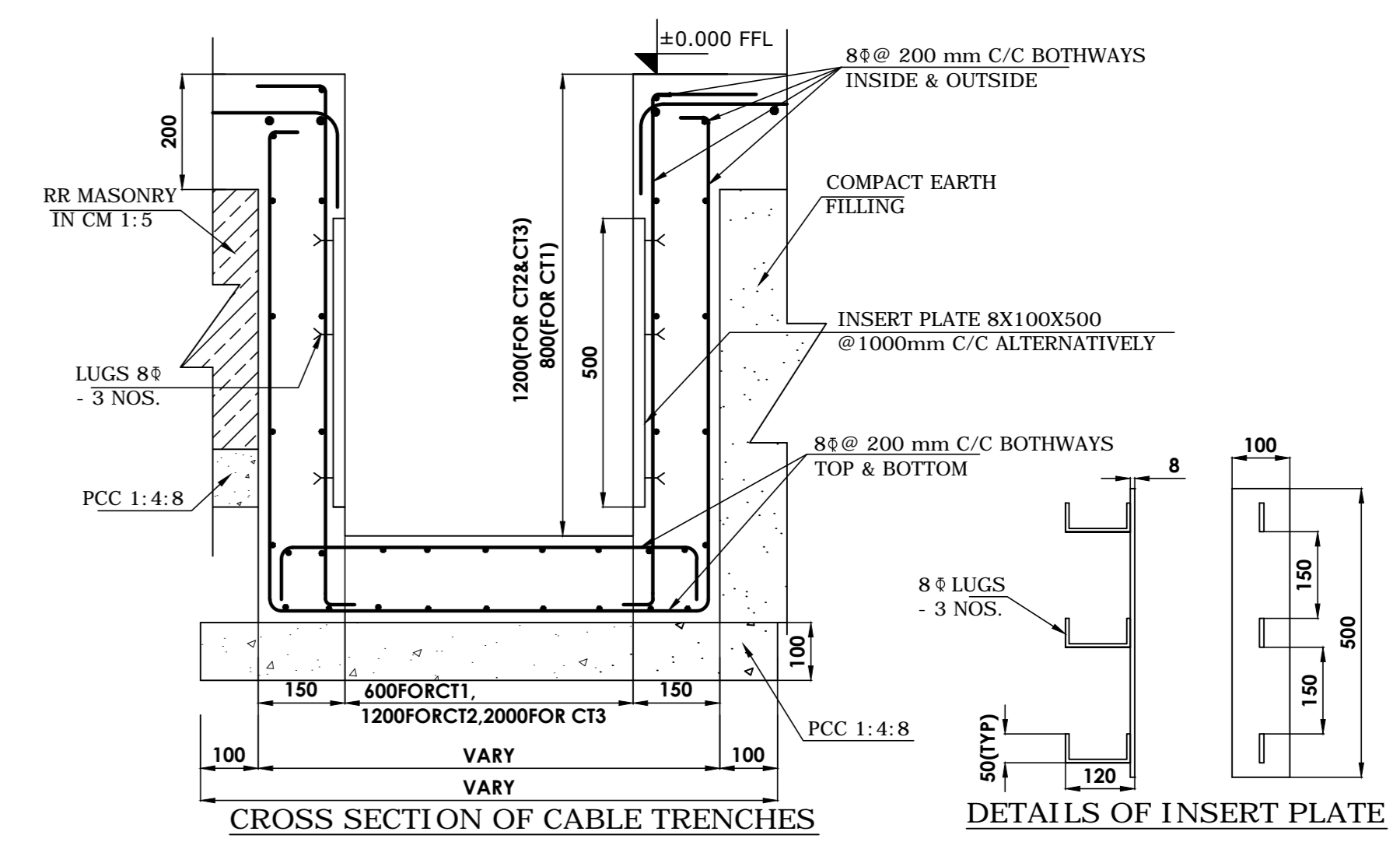
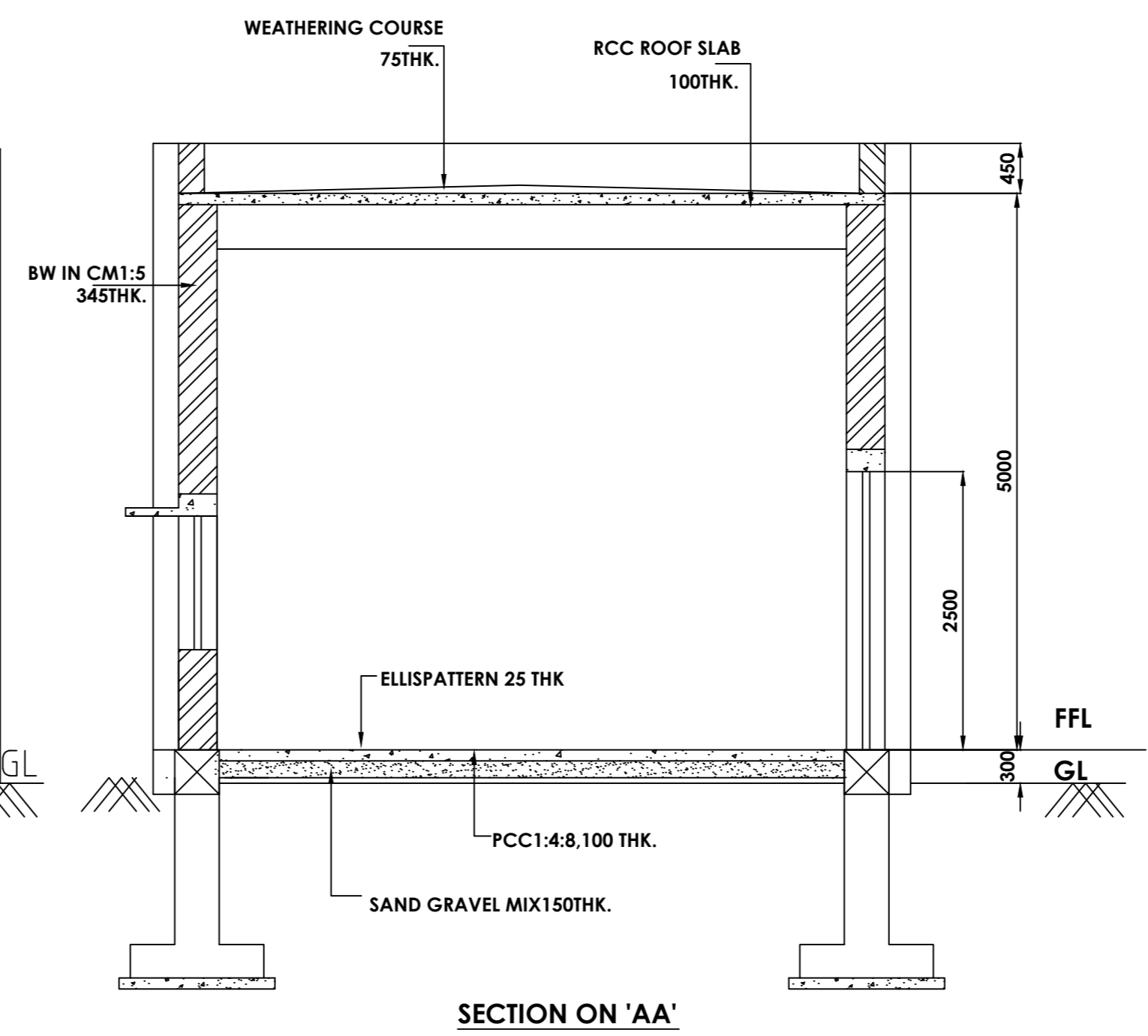
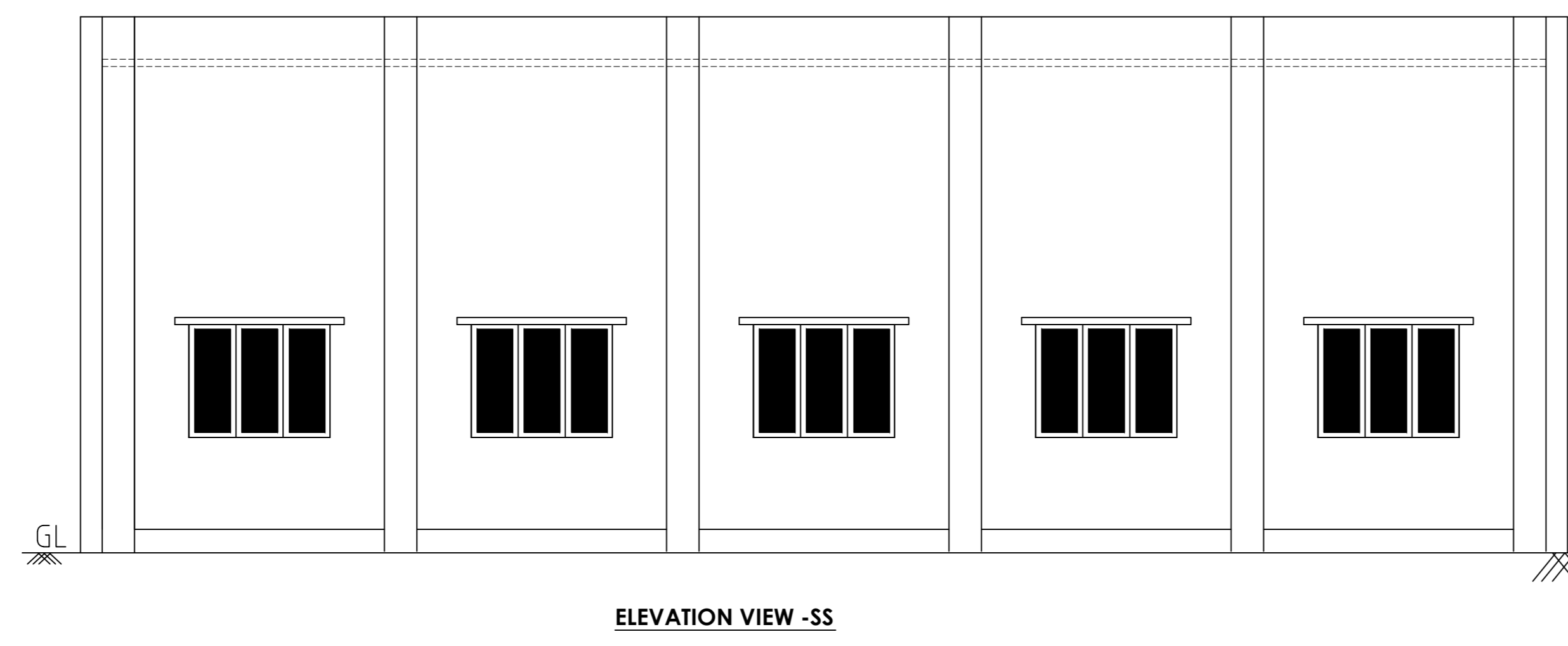
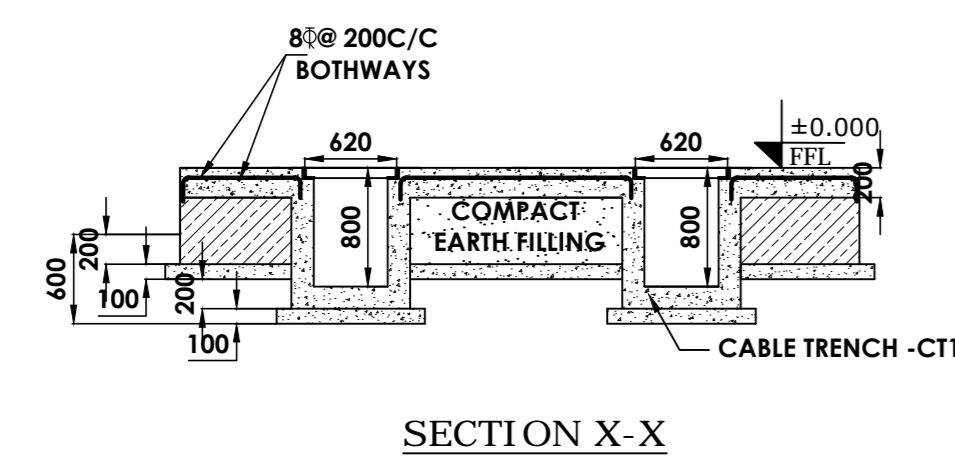
- LEGEND:
D - SOLID PVC DOOR WITH VIEWING PANEL 1000x 2100
D1 - PVC(SINTEX) DOOR 750 x 2100
LV - 'N' TYPE VENTILATOR 1000 x 600
EF - EXHAUST FAN



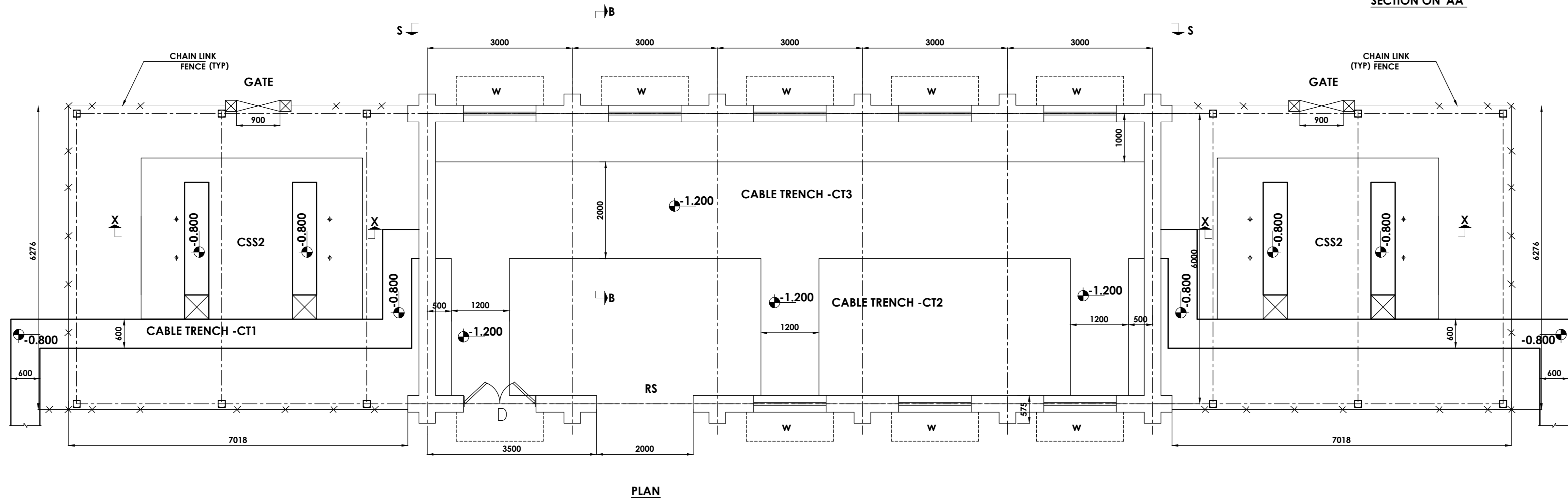
SECTION ON 'XX'

CAUTION: The information on this document is the property of BHARAT HEAVY ELECTRICALS LTD. It must not be used directly or indirectly in any way detrimental to the interest of the company.

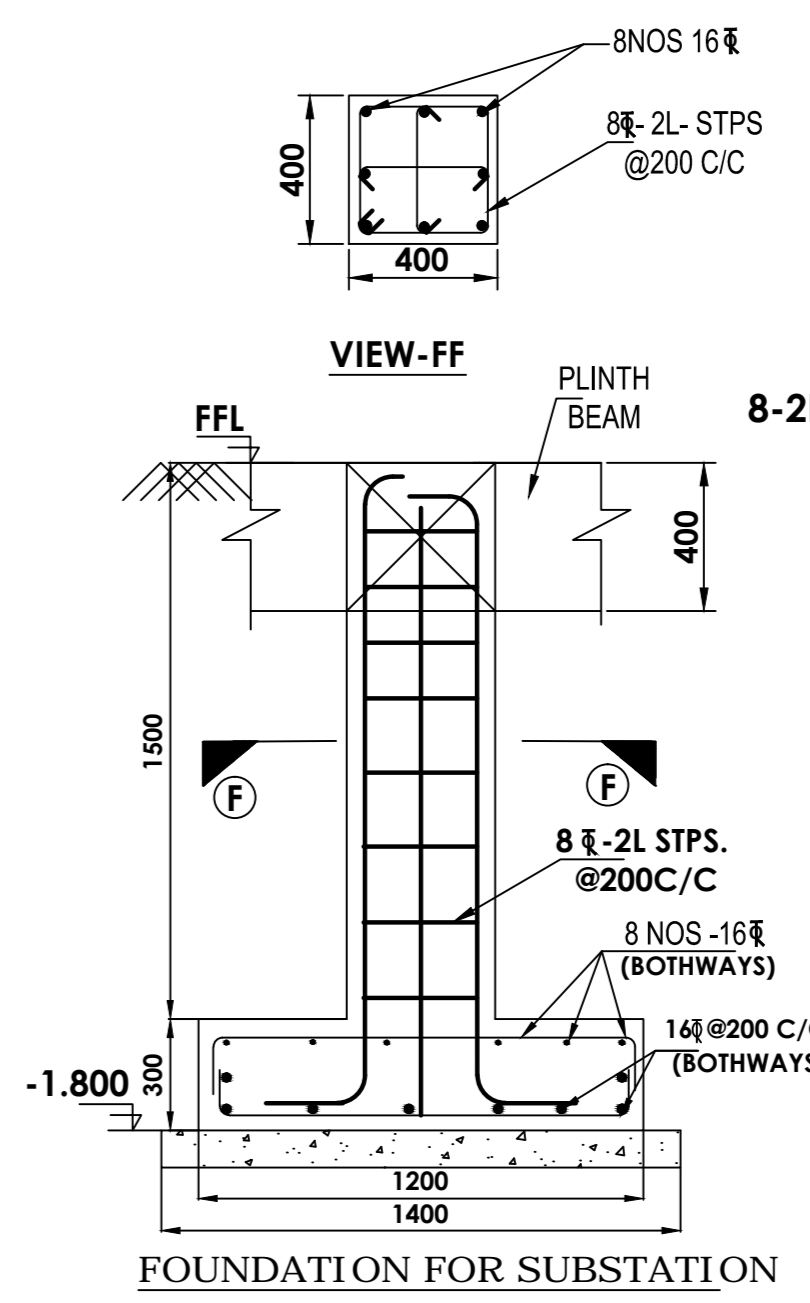
TYPE OF PRODUCT OR NAME OF CUSTOMER/PROJECT		POWER EQUIPMENT FABRICATION PLANT AT SAKOLI, BHANDARA-DIST BLDG NO-26			
	Bharat Heavy Electricals Ltd		DRN	NAME	NO. OF VAR
	UNIT: HIGH PRESSURE BOILER PLANT TIRUCHIRAPALLI - 620014		CHD	R. Palanikumar	
			APPD	K. Gunasekaran	
DEPT CIVIL	GRADE OF UNTOL. DIM C/M/F	SCALE 1:50, 1:30	WEIGHT (Kg)	REF TO ASSY / OLD DWG	ITEM NO
CODE 2200					
TITLE TYPICAL TOILET DETAILS			CARD CODE U 01	DRAWING NO : 3-TP-CEG-01203	REV 00



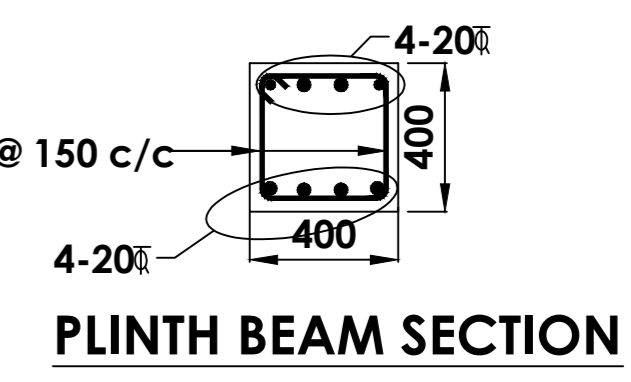
DETAILS OF INSERT PLATE



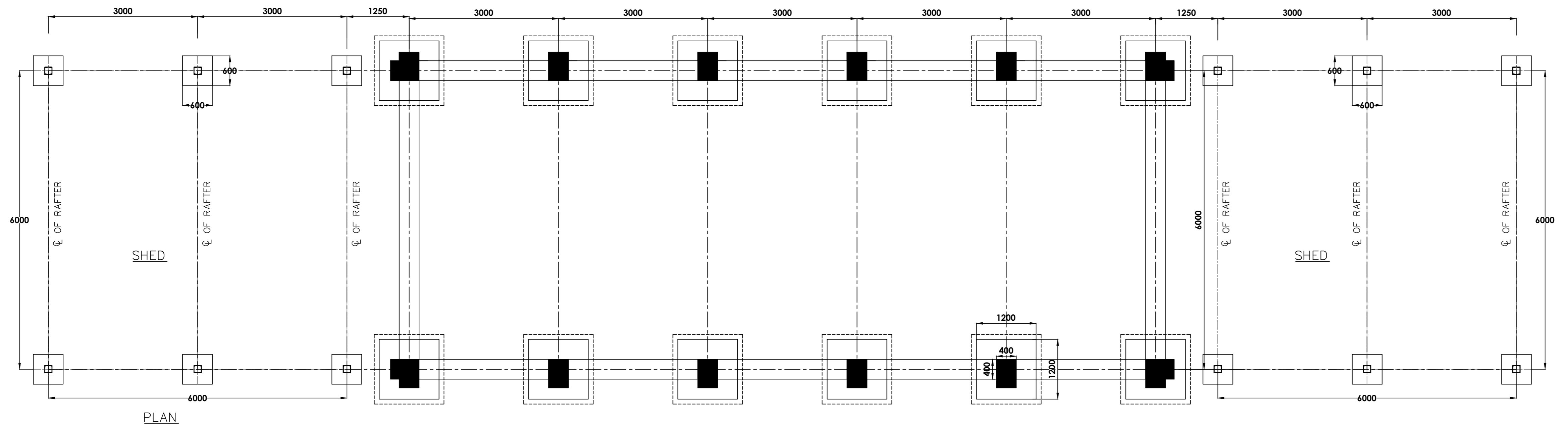
PLAN



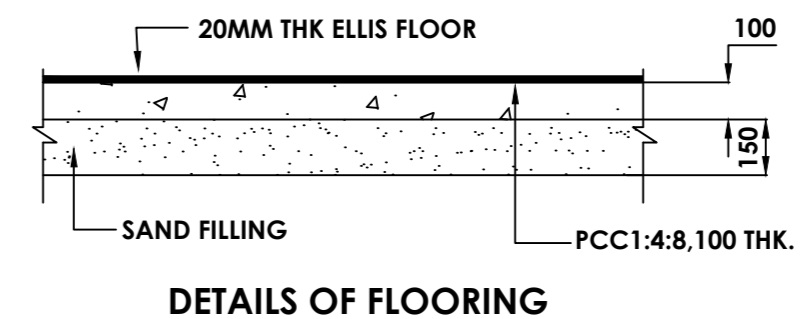
FOUNDATION FOR SUBSTATION



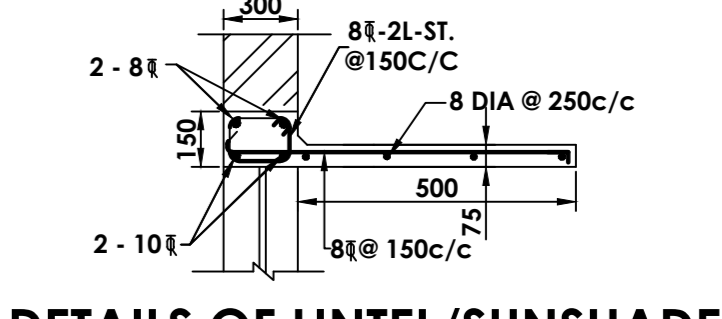
PLINTH BEAM SECTION



PLINTH BEAM & FOUNDATION PLAN



DETAILS OF FLOORING

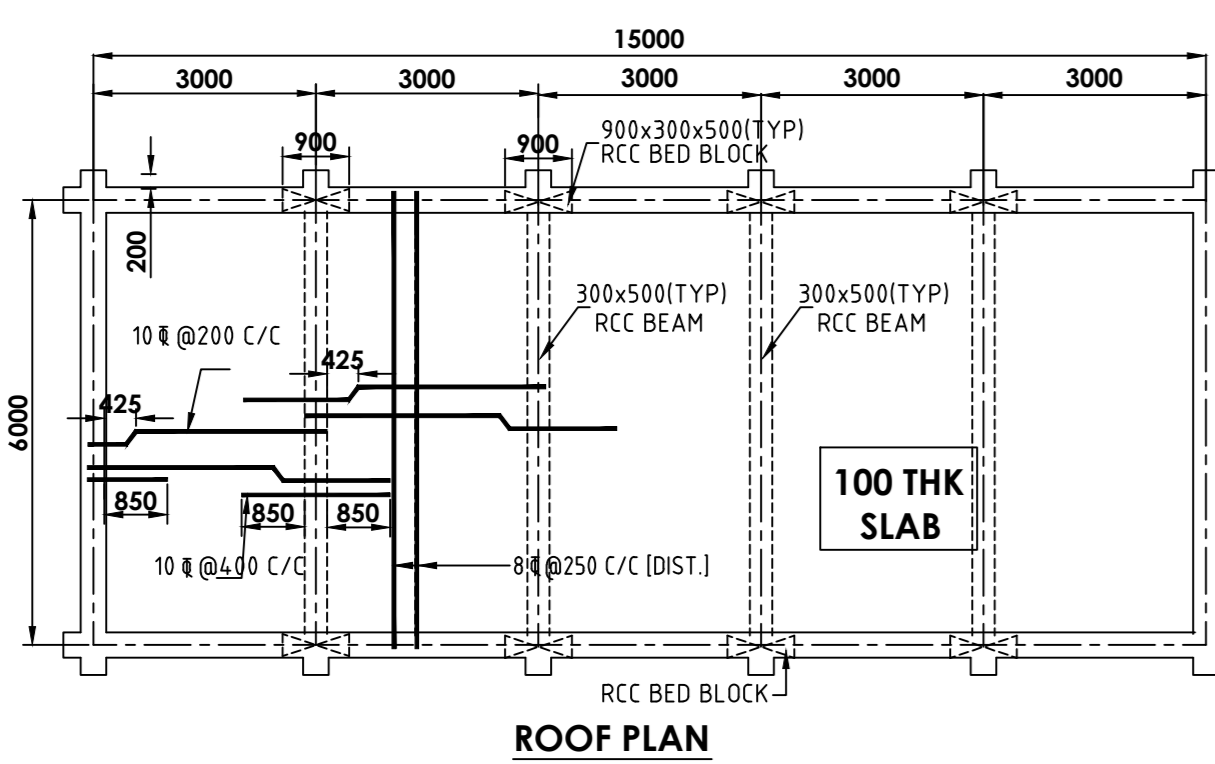


DETAILS OF LINTEL/SUNSHADE

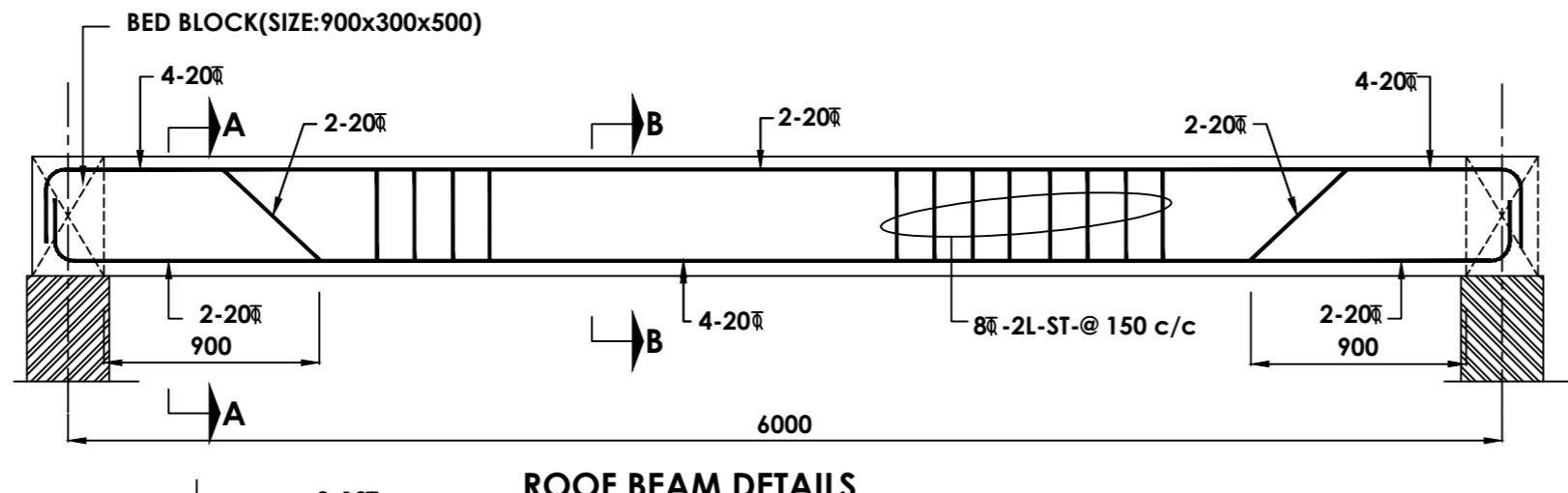
TENDER PURPOSE ONLY

- NOTES
1. ALL DIMENSIONS ARE IN MM AND LEVELS ARE IN METRES
 2. DONOT SCALE THE DRAWING FOLLOW WRITTEN DIMENSIONS ONLY
 3. CONCRETE GRADE M20
 4. CLEAR COVER TO REINPT : FOR BEAMS= 25mm.
: FOR ROOF SLAB= 20mm.
: FOR LINTEL = 25mm.
: FOR SUN SHADE= 15mm.
 5. REINFORCEMENT STEEL OF HIGH YIELD STRENGTH DEFORMED BARS CONFORMING TO IS: 1786-LATEST
 6. FOR DETAILS OF SHED REFER SEPARATE DRAWING.
 7. THE DETAILS SHOWN IN THE DRAWING ARE BASED ON PRELIMINARY ENGG. THESE MAY VARY DURING DETAILED ENGG.

- LEGEND:
- D - 1500MMX2100MM AL. GLAZED DOOR
 - RS - ROLLING GRILL 2500 x 3000
 - W - AL.GLAZED SLIDING WINDOW 1200 x 1500

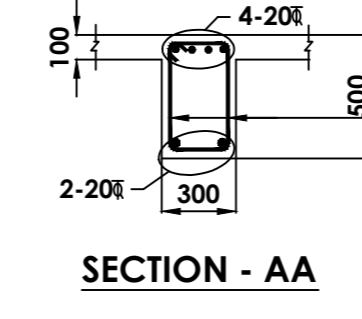


ROOF PLAN

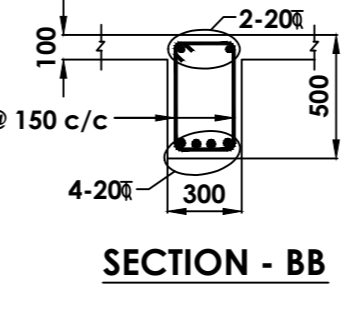


ROOF BEAM DETAILS

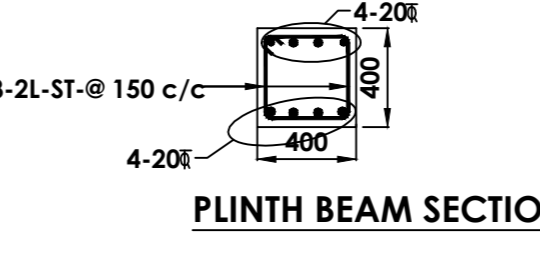
TYP.C/S OF BED BLOCK (SIZE:900x300x500)



SECTION - AA

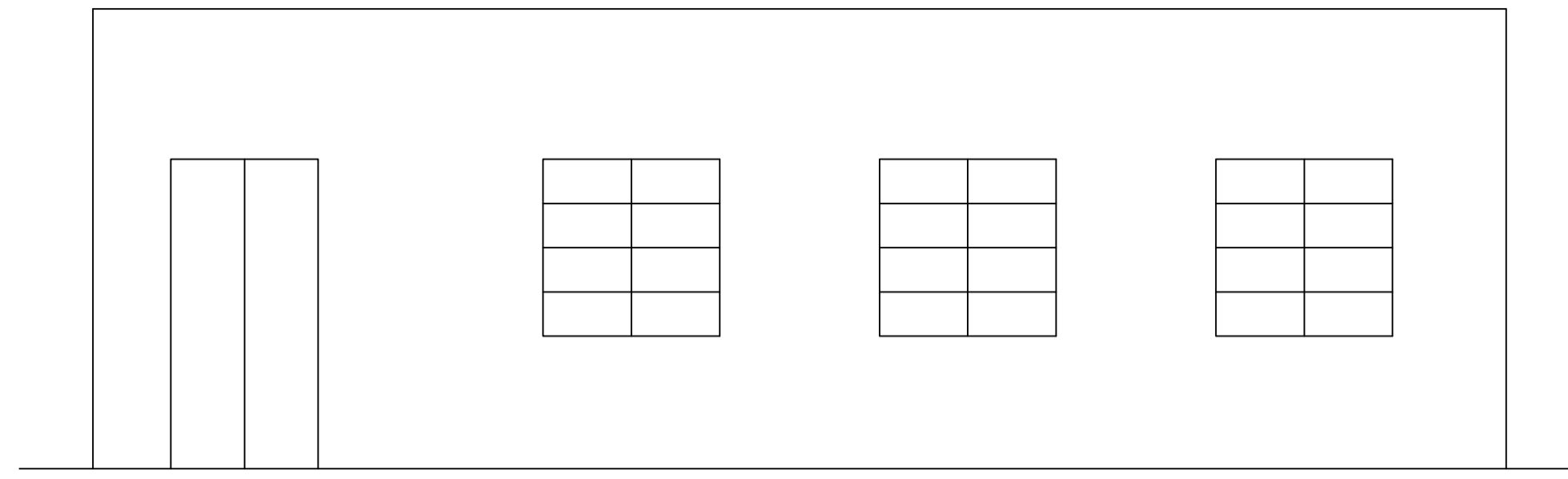


SECTION - BB

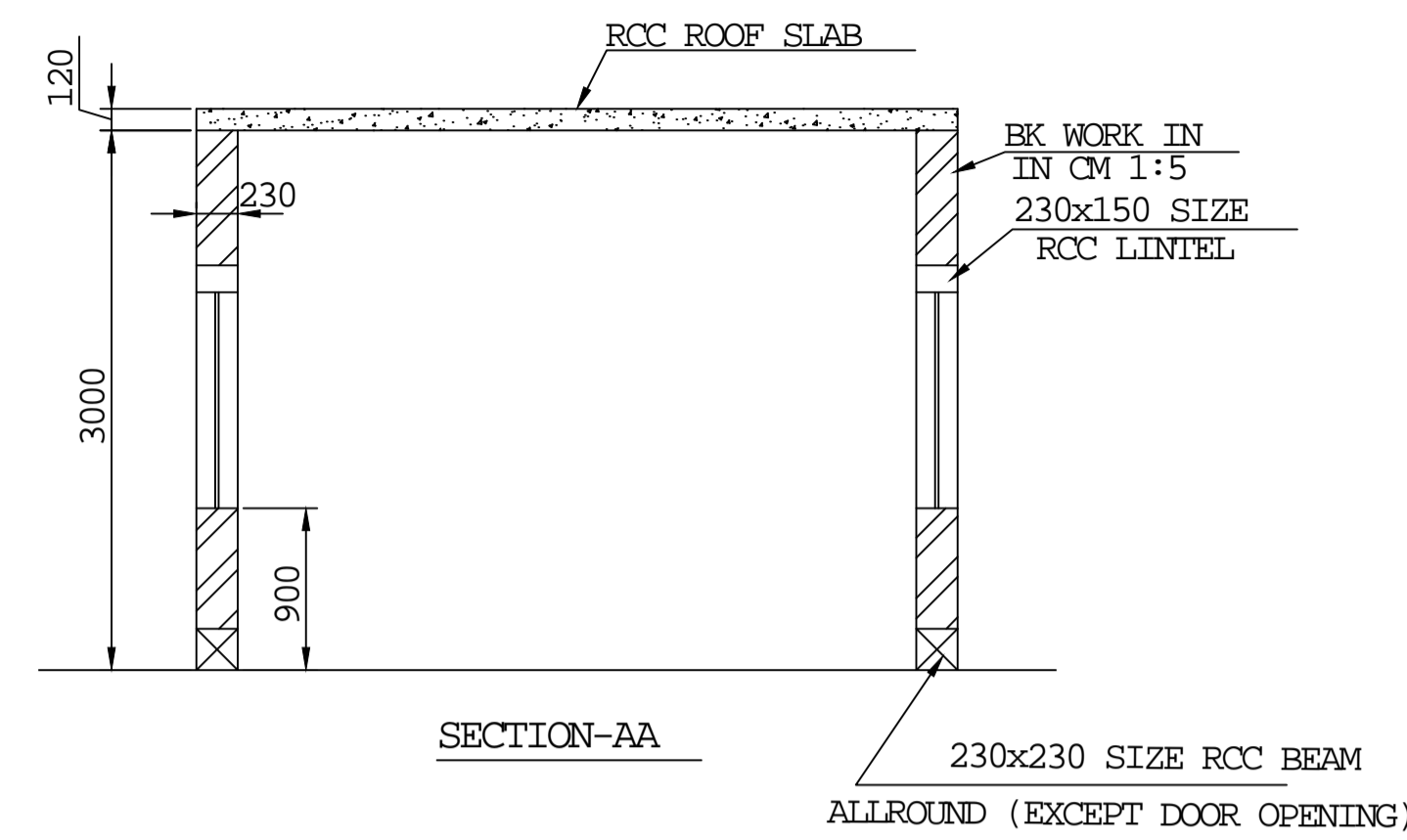


PLINTH BEAM SECTION

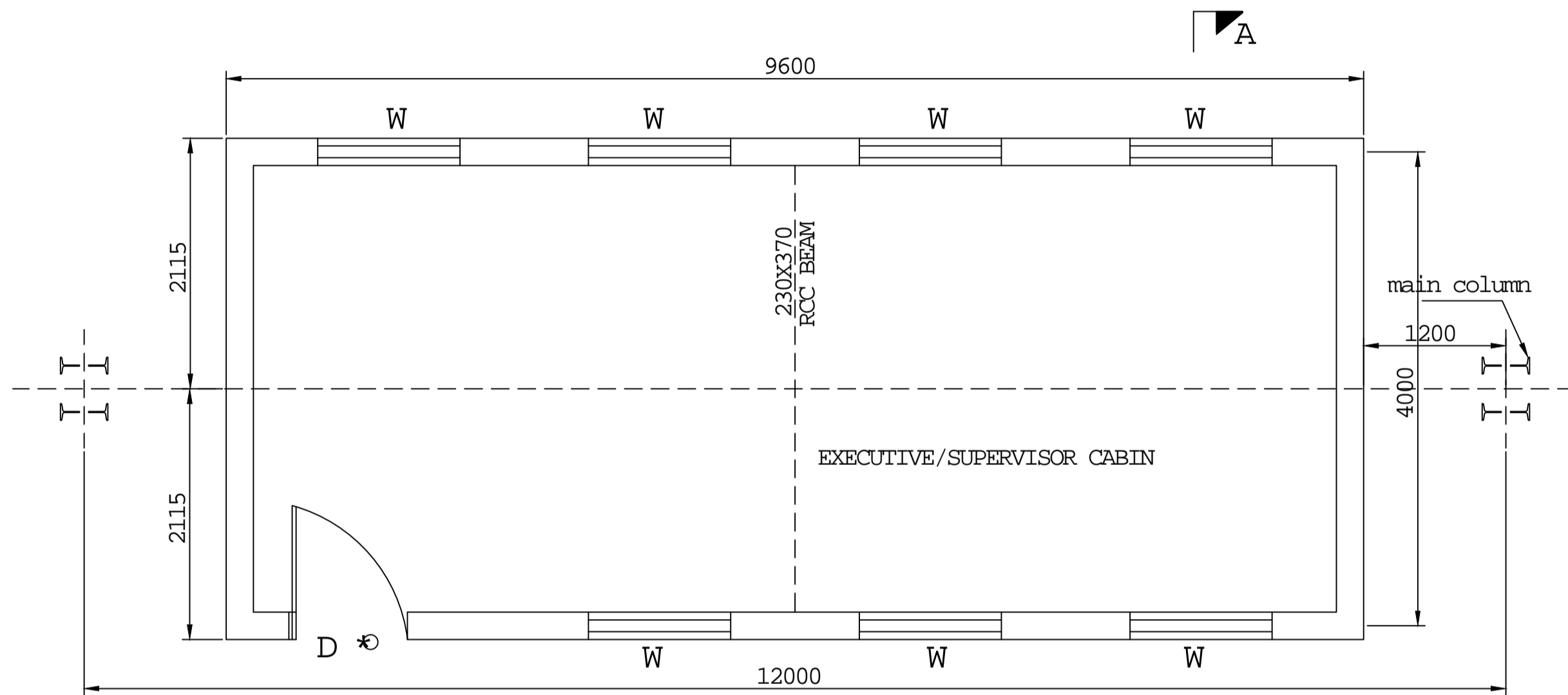
TYPE OF PRODUCT POWER EQUIPMENT FABRICATION PLANT		OR NAME OF CUSTOMER/PROJECT AT SAKOLI, BHANDARA DIST BLDG NO. 22A	
Bharat Heavy Electricals Ltd		NAME SIGNATURE DATE NO. OF SHEETS	
UNIT: HIGH PRESSURE BOILER PLANT TIRUCHIRAPALLI - 620014		DRAWN BY T.Narajayagan	
DEPT: CAL/PROJ		APPD: K.Gurusakaran	
SCALE: 1:100, 30:20	WEIGHT (Kg):	REV TO ASSY / OLD DWG	ITEM NO. NO. OF SHEETS
GRADE OF UNITS: DM	2200	C/M/F	
GENERAL ARRANGEMENT OF COMPACT SUB STATION		DRAWING NO: 0-TP-CEG-01205	REV 00



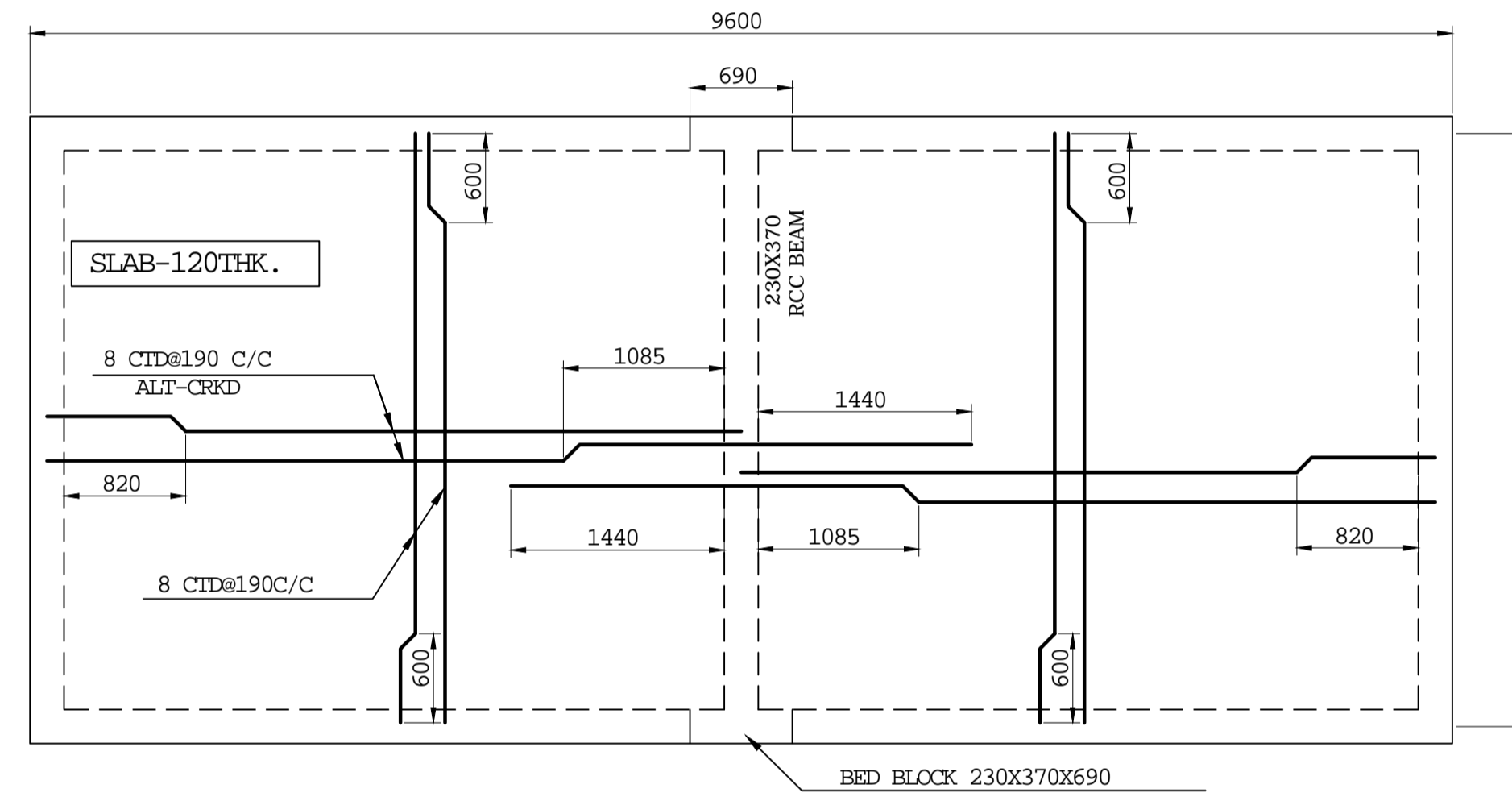
ELEVATION



SECTION-AA



PLAN



REINFORCEMENT DETAILS OF ROOF SLAB

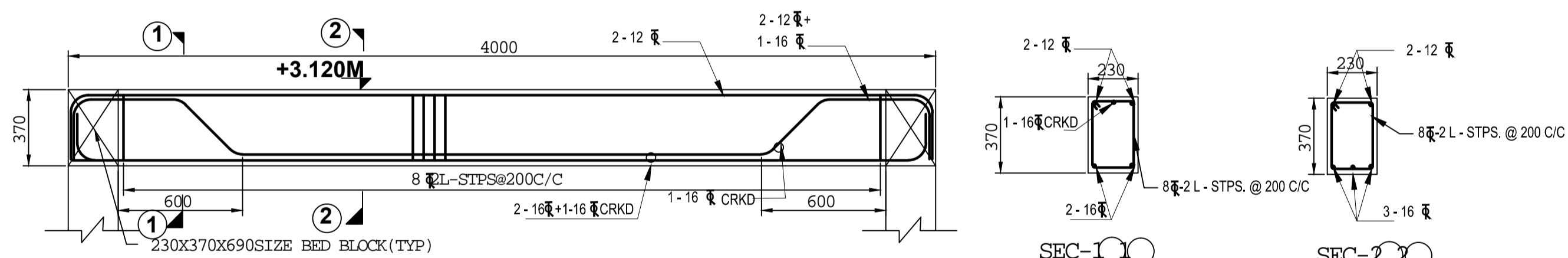
NOTES:-

- 1) ALL DIMENSIONS ARE IN 'MM' & LEVELS ARE IN 'M'
- 2) CLEAR COVER TO REINFORCEMENT AS FOLLOWS
a) BEAM-25MM
b) SLAB-20MM
c) LINTEL-20MM
- 3) CONCRETE GRADE M20
- 4) ALL REINFORCEMENT BARS SHALL BE HIGH YIELD STRENGTH DEFORMED BARS CONFORMING TO IS: 1785-(LATEST REVISION)
- 5) DEVELOPMENT LENGTH Ld = 50 TIMES THE DIA OF THE BAR
- 7) RCC BEAM IN FLOOR LEVEL SHALL BE PROVIDED ALLROUND THE BLDG EXCEPT DOOR OPENING
- 8) THE DETAILS SHOWN IN THE DRAWING ARE BASED ON PRELIMINARY ENGG. THESE MAY VARY DURING DETAILED ENGINEERING

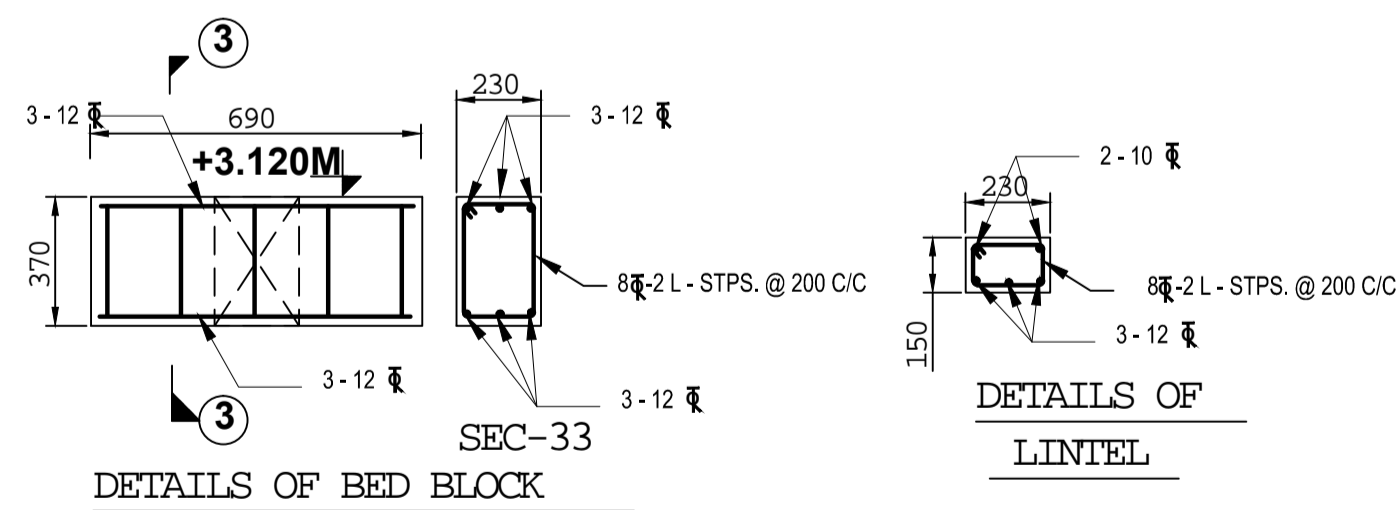
LEGEND

- D-1000X 2100- GLAZED ALUMINIUM DOOR
- W-1200X1200MM- GLAZED ALUMINIUM WINDOW WITH SLIDING SHUTTER & GRIL

TENDER PURPOSE ONLY

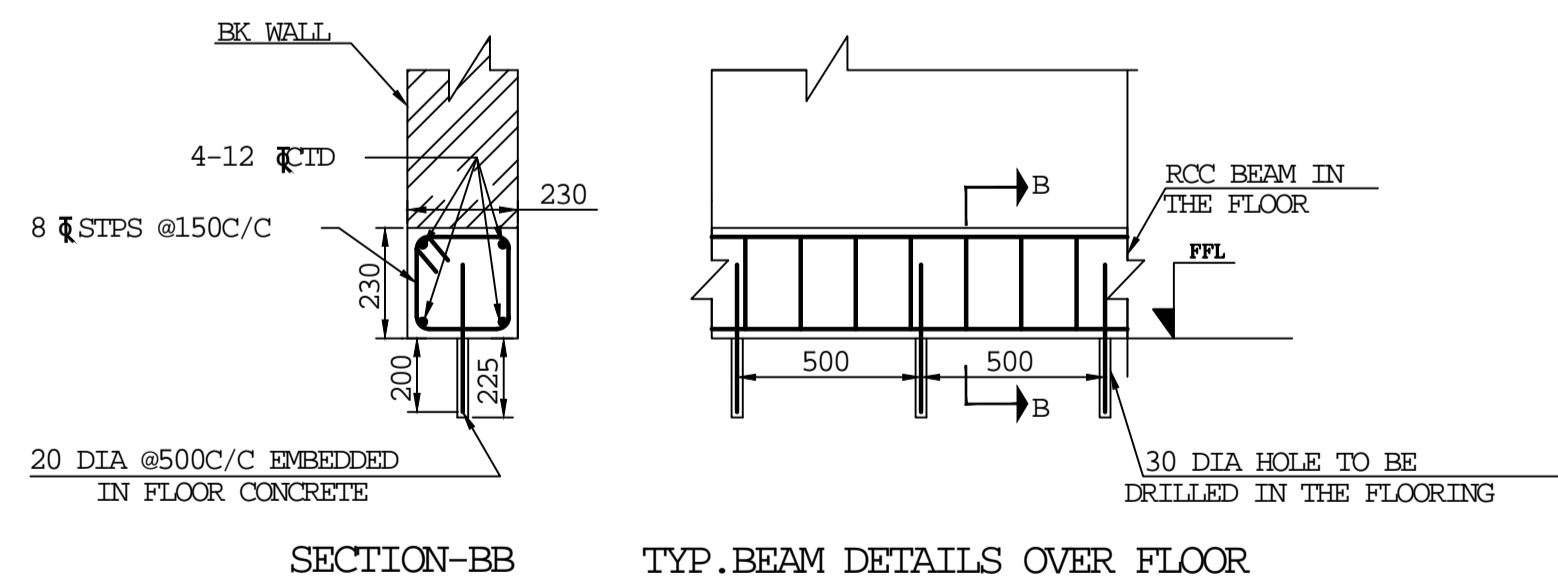


DETAILS OF RCC BEAM



DETAILS OF BED BLOCK

DETAILS OF LINTEL

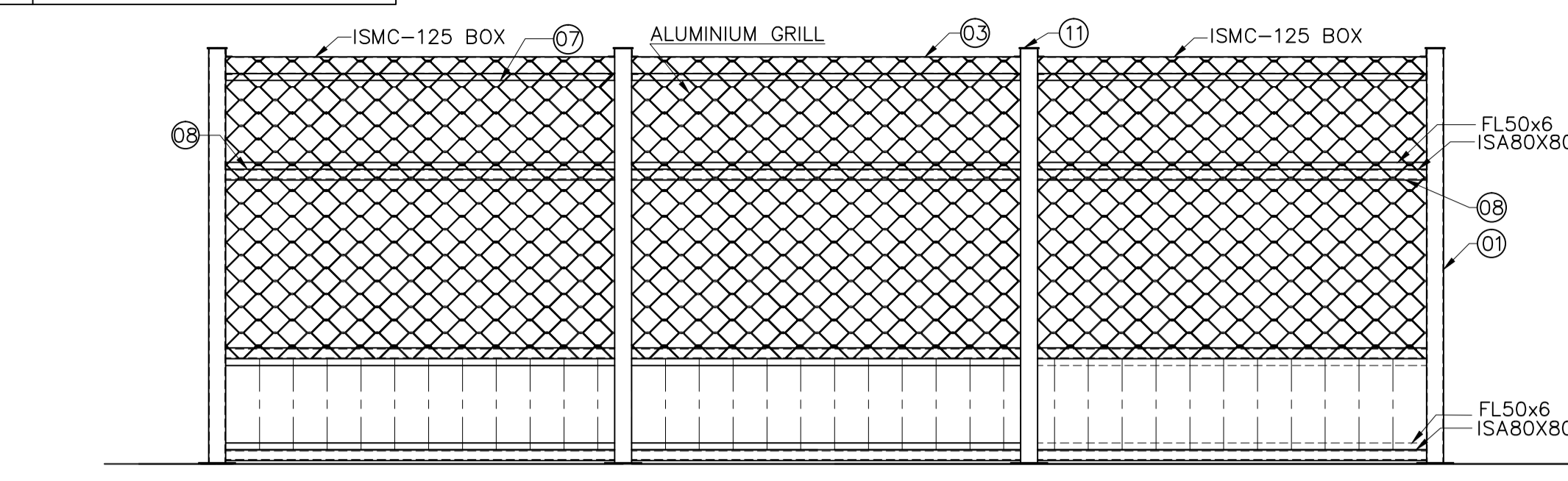


SECTION-BB

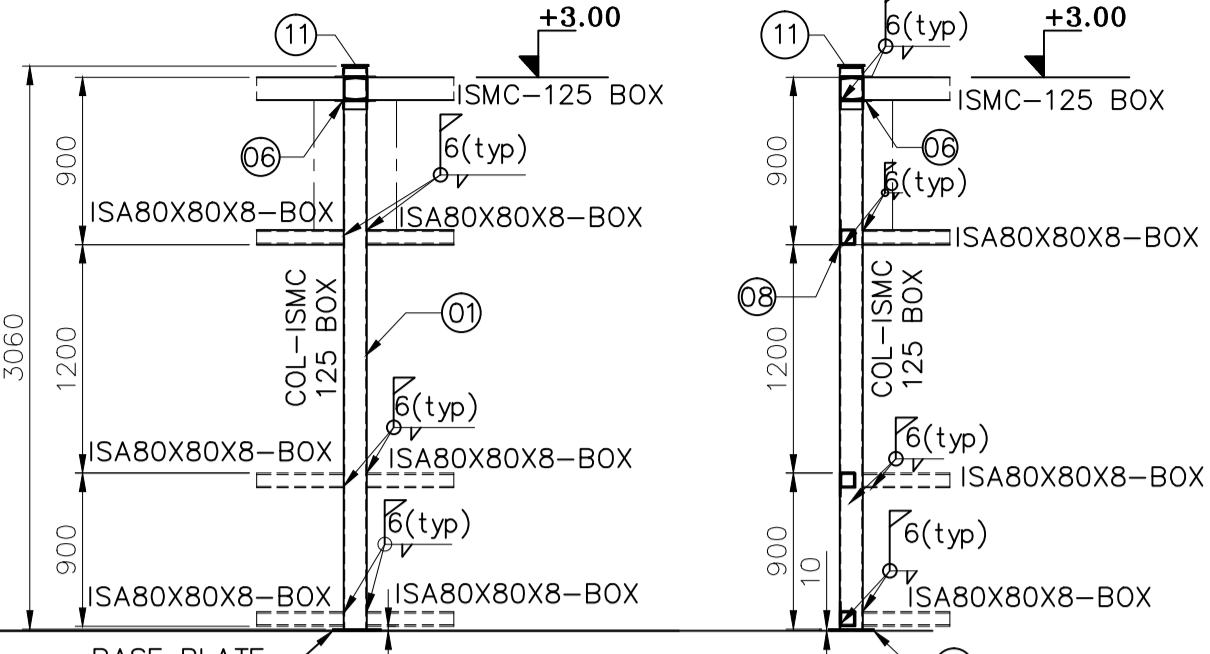
TYP. BEAM DETAILS OVER FLOOR

TYPE OF PRODUCT OR NAME OF CUSTOMER/PROJECT		POWER EQUIPMENT FABRICATION PLANT AT SAKOLI BANDHARA DIST				
Bharat Heavy Electricals Ltd UNIT: HIGH PRESSURE BOILER PLANT TIRUCHIRAPALLI - 620014		DRN	J. Anandan	SIGNATURE	DATE	NO. OF VAR
CIVIL		CHD	T. Anandh Yogaa	REF TO ASSY / OLD DWG		ITEM NO
DEPT CODE	GRADE OF UNLTL DM C/M/F	SCALE	1:20,1:40	WEIGHT (Kg)		No. OF ITEMS
TITLE		CARD CODE	DRAWING NO :		REV	
DETAILS OF EXECUTIVE/SUPERVISOR CABIN (12 Nos)		U 01	1-TP-CEG-01264		00	

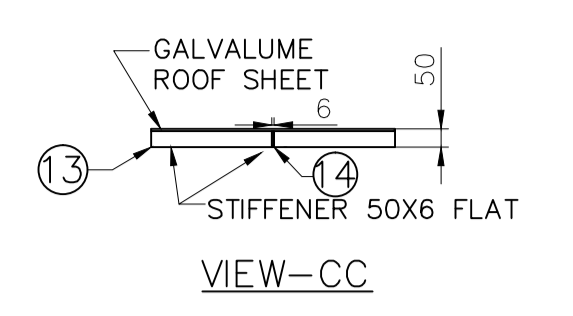
CAUTION: The information on this document is the property of BHARAT HEAVY ELECTRICALS LTD. It must not be used directly or indirectly in any way without the prior written consent of the company.



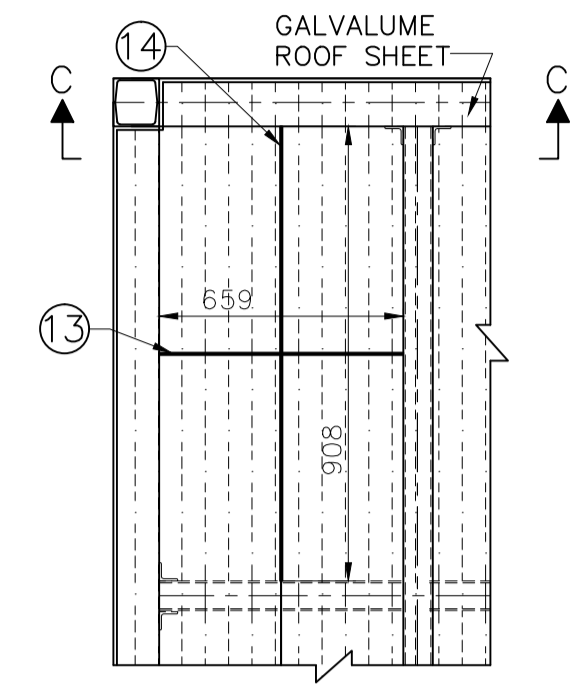
VIEW DD



DETAILS OF INTER COLUMN DETAILS OF END COLUMN



VIEW-CC



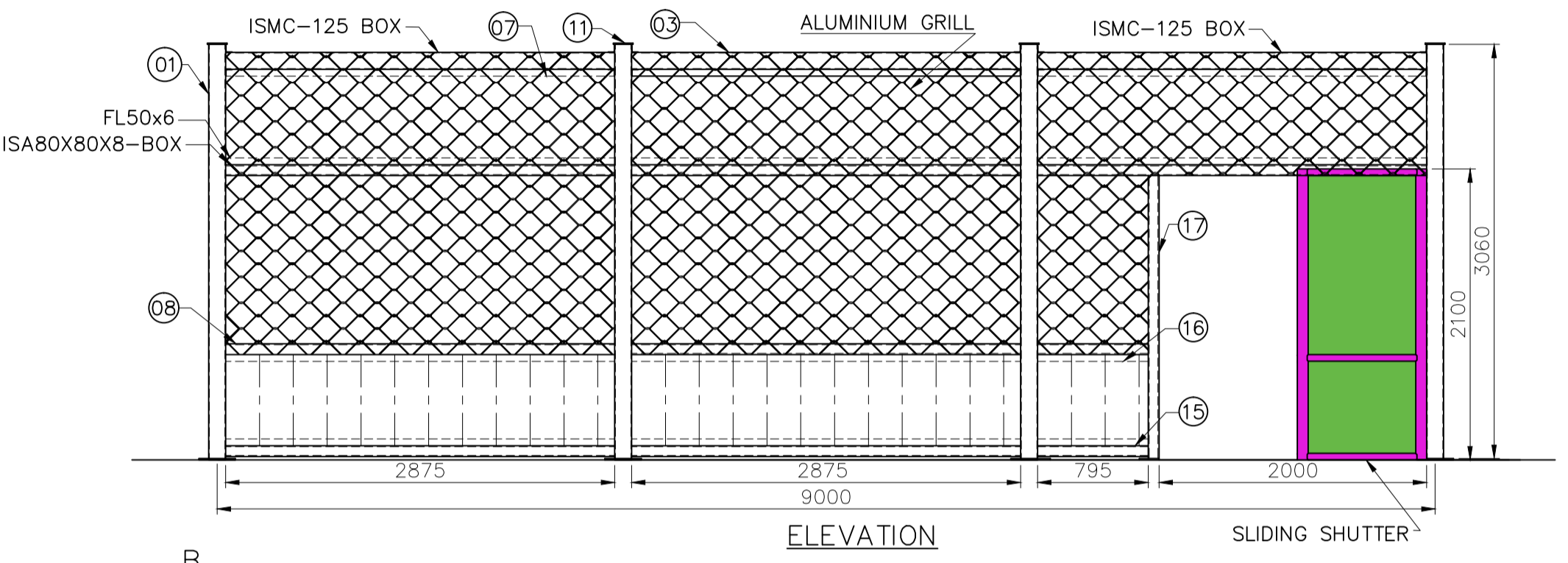
DETAIL -B

NOTES:

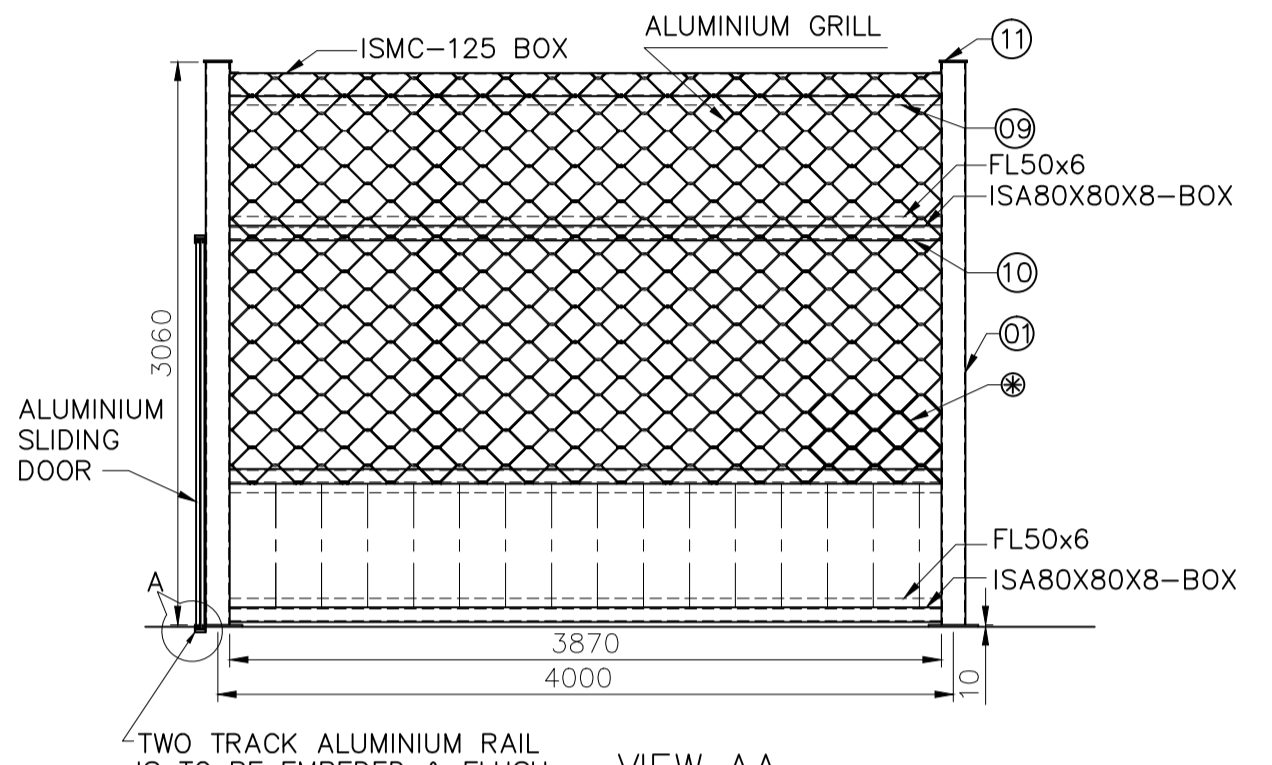
1. ALL DIMENSIONS ARE IN MM AND LEVELS ARE IN METERS
2. ALL WELDS ARE 6MM FILLET UOS
3. E-6013 ELECTRODE SHALL BE USED FOR ALL WELDING
4. ALL THE MEMBERS ARE TO BE WELDED FOR ITS FULL CONTACT LENGTH UOS
5. MATERIAL LIST IS GIVEN FOR 1 CABIN ONLY
6. SUITABLE EXHAUST ARRANGEMENT IN GALVALUME ROOFING SHEET TO BE PROVIDED
7. SUITABLE INTERMEDIATE SUPPORT MAY BE PROVIDED AS PER ALUMINIUM GRILLS SUPPLIER SPECIFICATION
8. THE DETAILS SHOW IN THE DRAWINGS BASED ON PRELIMINARY ENGG THIS MAY VARY DURING DETAILED ENGINEERING

LEGEND:

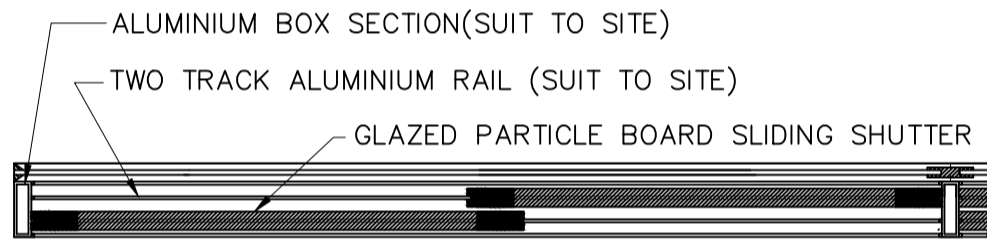
D-ALUMINIUM SLIDING DOOR - 2000X2100 mm



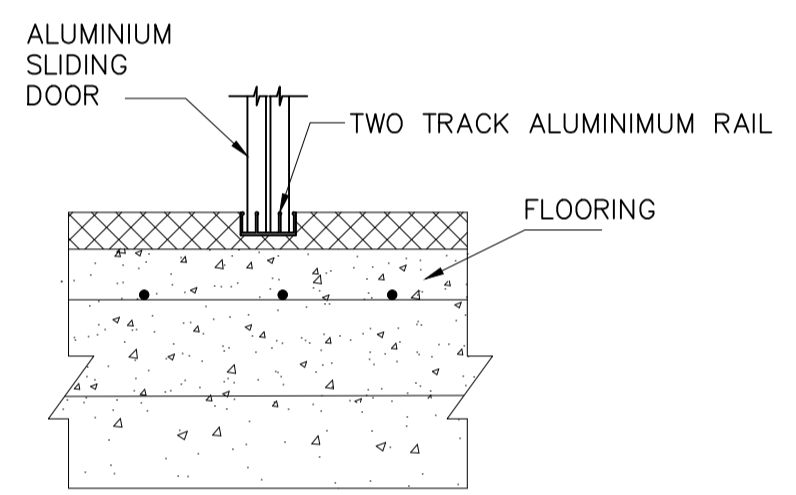
ELEVATION SLIDING SHUTTER



VIEW AA



DETAILS -C

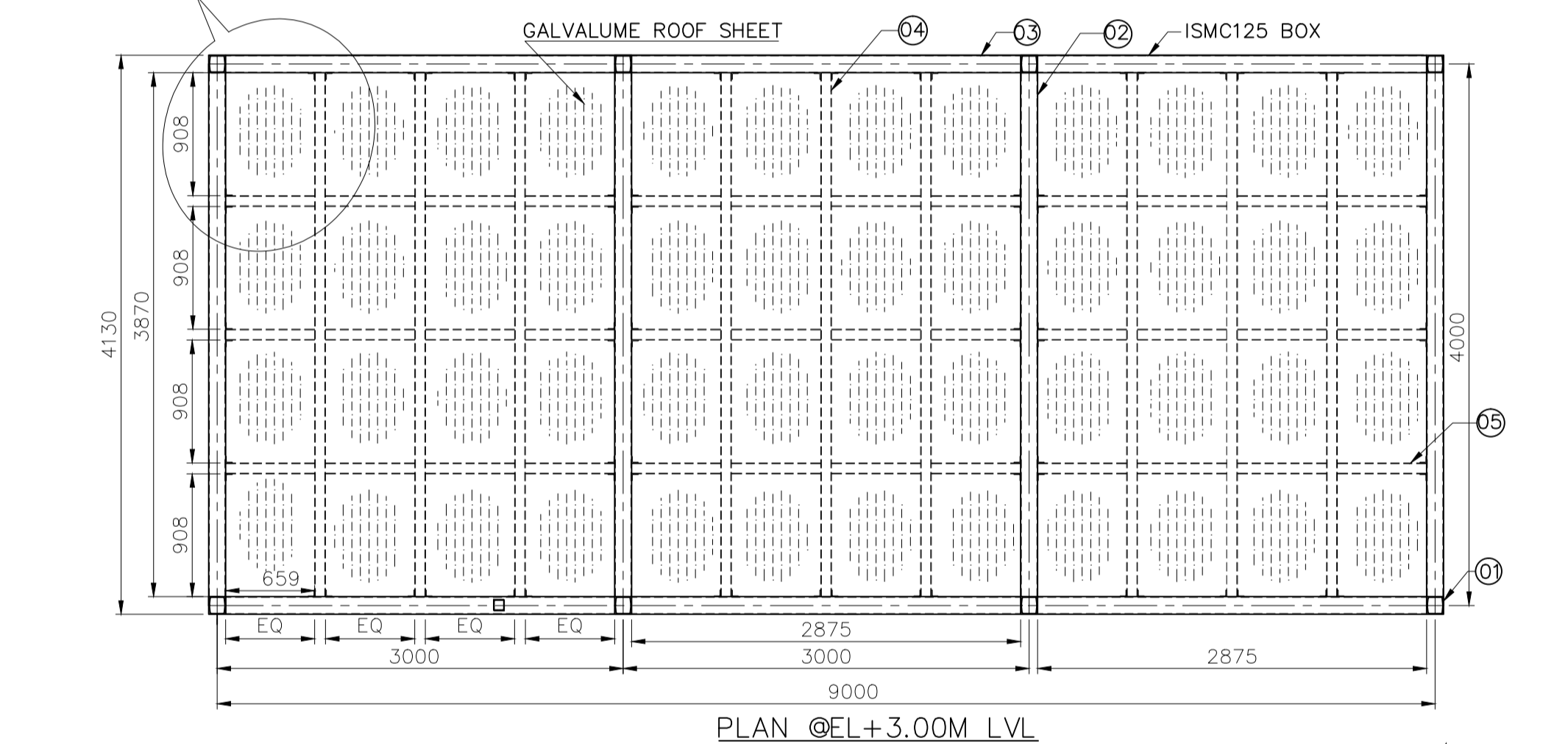


DETAIL -A

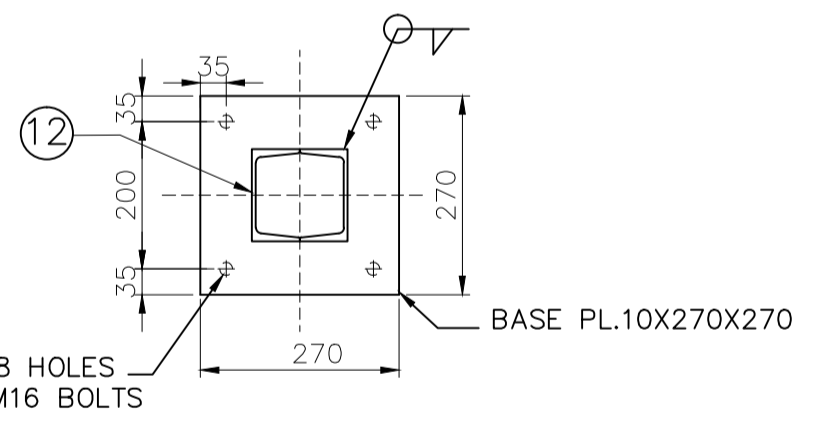
TENDER PURPOSE ONLY

TOTAL Wt. FOR 3 CABINS - 12783.33 kg
TOTAL Wt. FOR 1 CABIN - 4261.11 kg

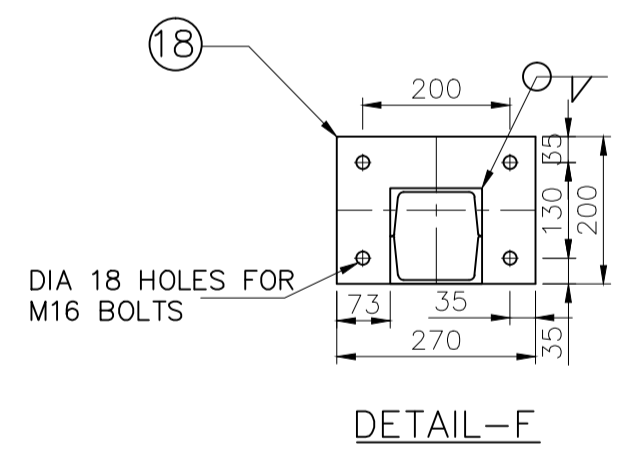
ITEM NO.	DESCRIPTION	MATERIAL SPECN.	NOS	UNITWT. (KG)	GROSSWT (KG)	REMARKS
18	PL12-270x200	IS2062Fe410WA	2	5.09	10.17	
17	ISA80x80x8-2088	IS2062 Fe410A	2	20.04	40.09	
16	FL50x6-795	IS2062 Fe410A	2	1.91	3.82	
15	ISA80x80x8-795	IS2062 Fe410A	4	7.63	30.53	
14	FL50x6-908	IS2062 Fe410A	48	2.18	104.6	
13	FL50x6-659	IS2062 Fe410A	48	1.58	75.92	
12	PL12-270x270	IS2062Fe410WA	6	6.87	41.2	
11	PL12-145x135	IS2062Fe410WA	9	1.84	16.6	
10	ISA80x80x8-3870	IS2062 Fe410A	12	37.15	445.82	
9	FL50x6-3870	IS2062 Fe410A	8	9.29	74.3	
8	ISA80x80x8-2875	IS2062 Fe410A	32	27.6	883.2	
7	FL50x6-2875	IS2062 Fe410A	22	6.9	151.8	
6	ISA80x80x8-125	IS2062 Fe410A	40	1.2	48	
5	ISMC75-659	IS2062Fe410WA	72	4.71	338.78	
4	ISMC75-3870	IS2062Fe410WA	18	27.63	497.37	
3	ISMC125-2875	IS2062Fe410WA	12	37.66	451.95	
2	ISMC125-3870	IS2062Fe410WA	8	50.7	405.58	
1	ISMC125-3060	IS2062Fe410WA	16	40.09	641.38	



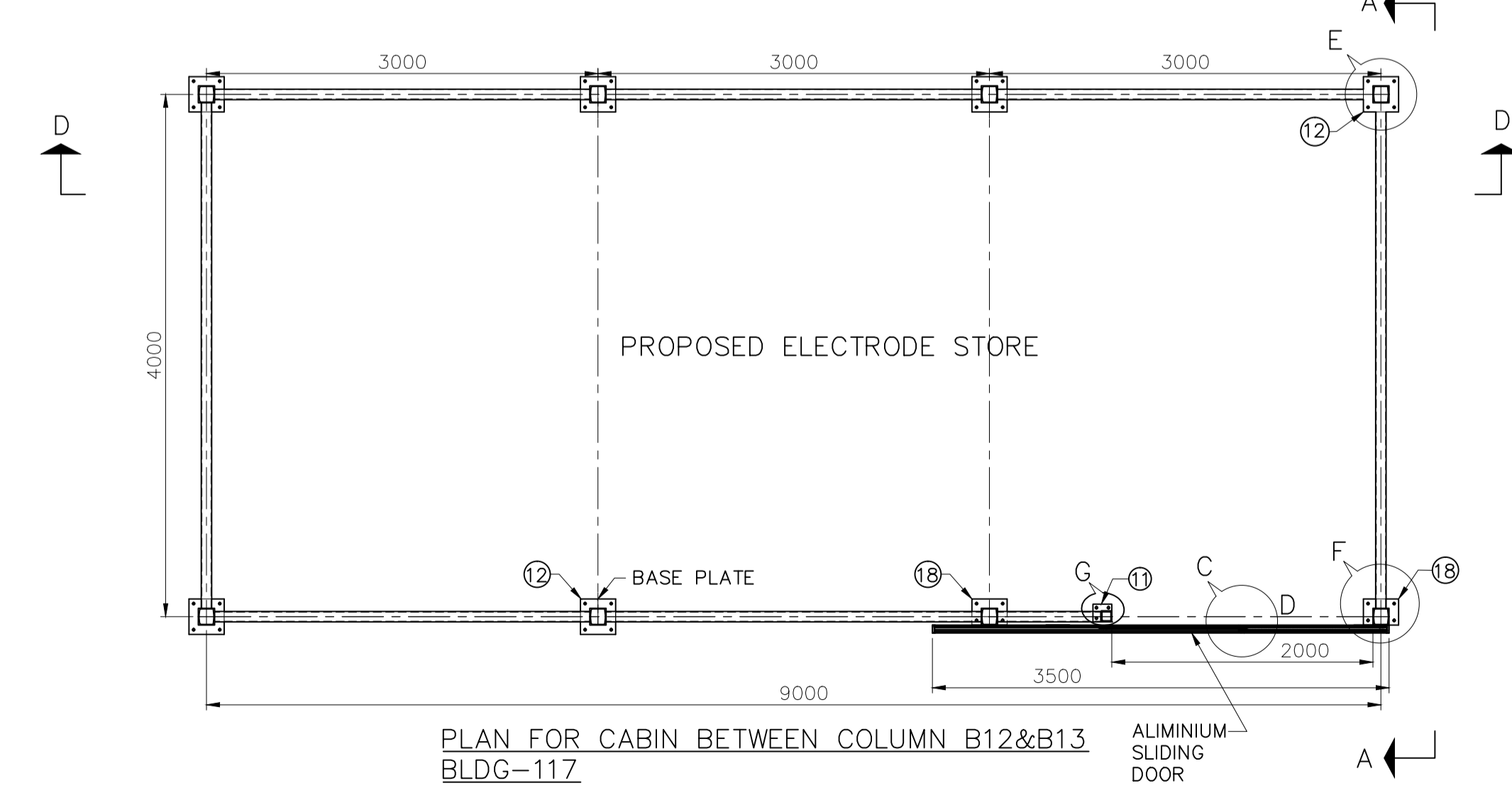
PLAN @EL+3.00M LVL



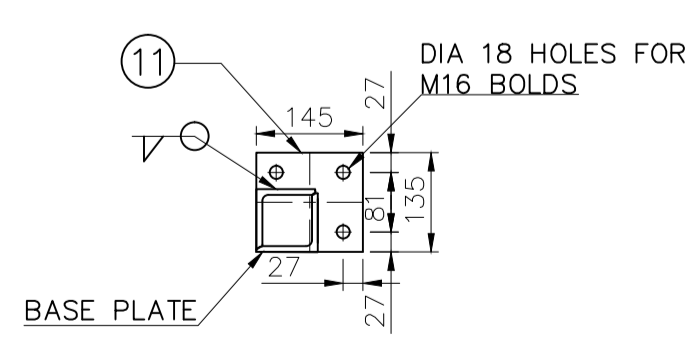
DETAIL -E



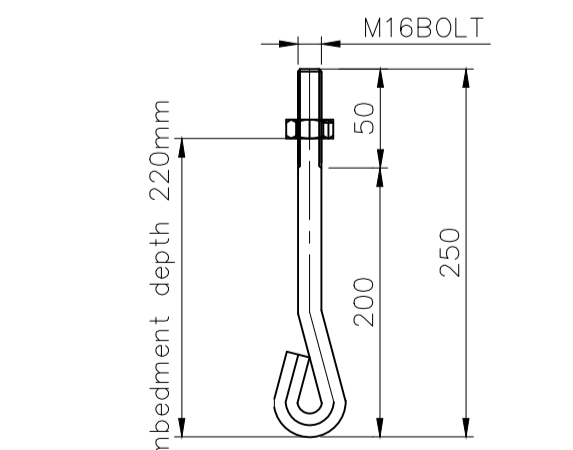
DETAIL -F



PLAN FOR CABIN BETWEEN COLUMN B12&B13 BLDG-117
PLAN FOR CABIN BETWEEN COLUMN E21&E20 IN BLDG-108 (MIRROR IMAGE)



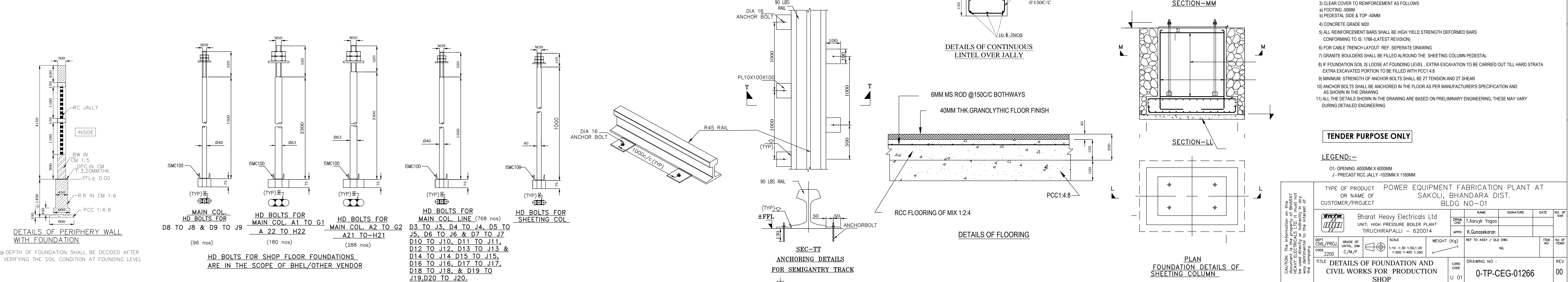
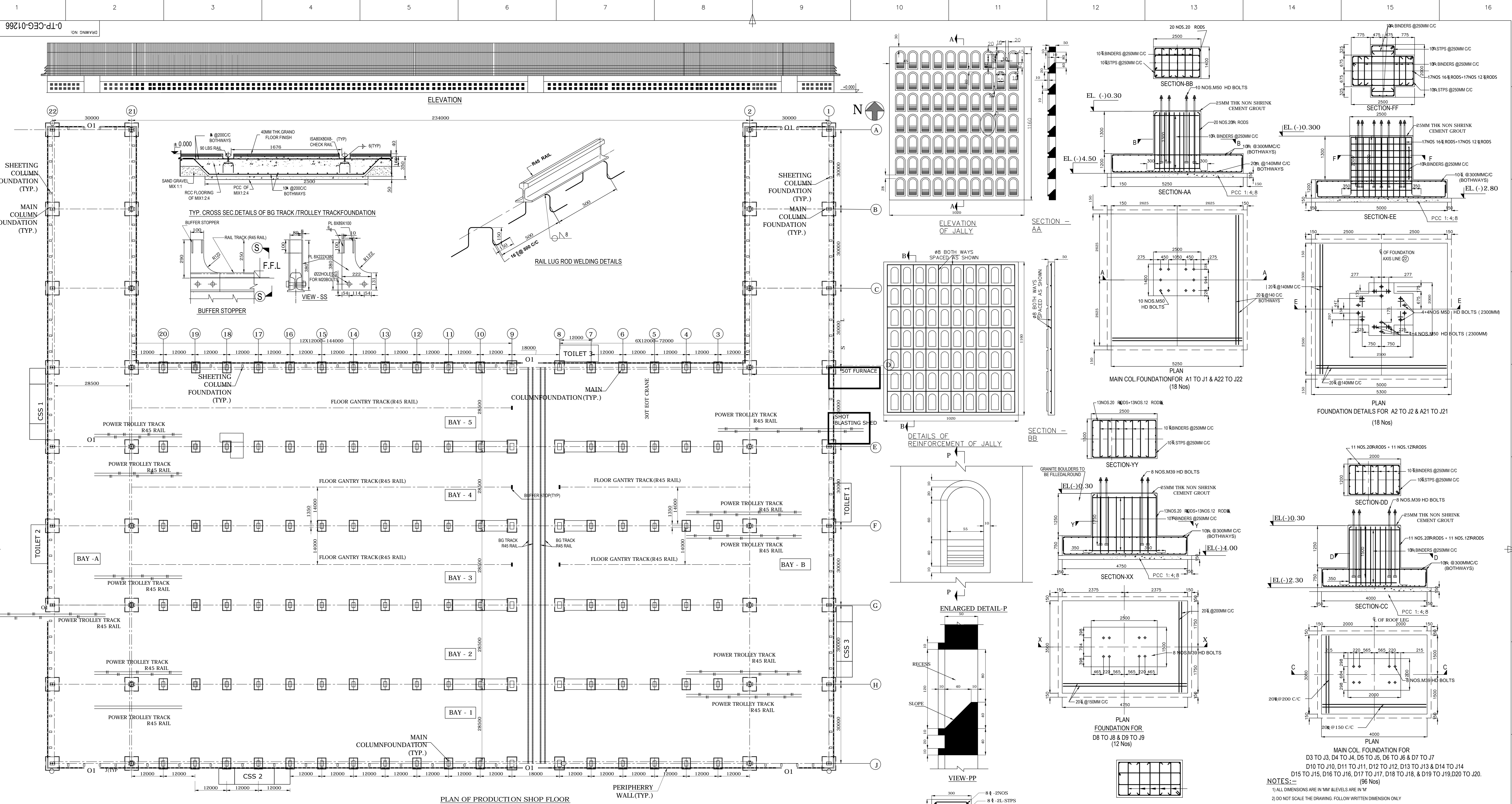
DETAIL -G



FOUNDATION BOLT DETAILS

CAUTION: The information in this document is the property of BHARAT HEAVY ELECTRICALS LTD. It must not be used directly or indirectly in any way without the written consent of the company.

TYPE OF PRODUCT OR NAME OF CUSTOMER/PROJECT		POWER EQUIPMENT FABRICATION PLANT AT SAKOLI BANDHARA DIST			
Bharat Heavy Electricals Ltd		NAME	SIGNATURE	DATE	NO. OF VAR
UNIT: HIGH PRESSURE BOILER PLANT TIRUCHIRAPALLI - 620014		DRN	J. Anandan	05.03.13	
		CHD	T. AaruyirYogaa	05.03.13	
		APPD	K. Gunasekaran	05.03.13	
DEPT CIVIL	GRADE OF UNTLG. OM C/M/F	SCALE	WEIGHT (Kg)	REF TO ASSY / OLD DWG	ITEM NO
2200		1:100; 1:40; 1:10 & 1:5			
TITLE: DETAILS OF STEEL CABIN FOR ELECTRODE STORE (3 Nos)		CARD CODE	DRAWING NO :		REV
		U 01	1-TP-CEG-01265		0



NOTES:-

- 1) ALL DIMENSIONS ARE IN MM UNLESS OTHERWISE SPECIFIED
- 2) DO NOT SCALE THE DRAWING. FOLLOW WRITTEN DIMENSION ONLY
- 3) CLEAR COVER TO REINFORCEMENT AS FOLLOWS
 a) FOOTING - 60MM
 b) PEDESTAL SIDE & TOP - 40MM
 c) CONCRETE GRADE M20
- 4) ALL REINFORCEMENT BARS SHALL BE HIGH YIELD STRENGTH DEFORMED BARS (CONFORMING TO IS 1786 - LATEST REVISION)
- 5) FOR CABLE TRENCH LAYOUT, REF. SEPARATE DRAWING
- 6) GRANITE BOLDERS SHALL BE FILLED AROUND THE SHEETING COLUMN PEDESTAL
- 7) IF FOUNDATION SOIL IS LOOSE AT FOUNDING LEVEL, EXTRA EXCAVATION TO BE CARRIED OUT TILL HARD STRATA. EXTRA EXCAVATED PORTION TO BE FILLED WITH PCC 1:4:8
- 8) MINIMUM STRENGTH OF ANCHOR BOLTS SHALL BE 2T TENSION AND 2T SHEAR
- 9) ANCHOR BOLTS SHALL BE ANCHORED IN THE FLOOR AS PER MANUFACTURER'S SPECIFICATION AND AS SHOWN IN THE DRAWING
- 10) ALL THE DETAILS SHOWN IN THE DRAWING ARE BASED ON PRELIMINARY ENGINEERING. THESE MAY VARY DURING DETAILED ENGINEERING

TENDER PURPOSE ONLY

LEGEND:-

O1 - OPENING - 6000MM X 6000MM
 J - PRECAST RCC JALLY - 1020MM X 1160MM

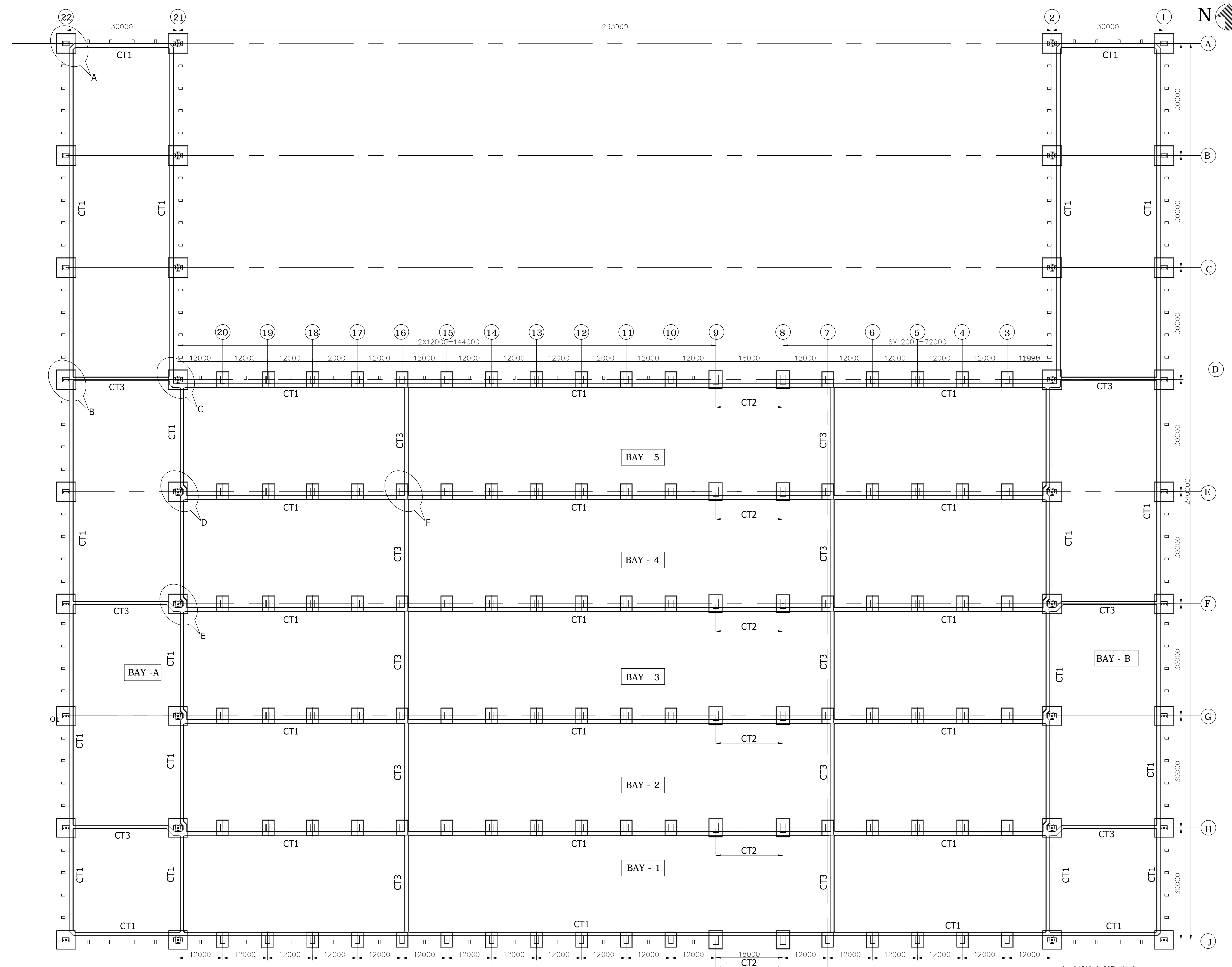
TYPE OF PRODUCT POWER EQUIPMENT FABRICATION PLANT AT
 OR NAME OF THE CUSTOMER/SKOLI, BHANDARA DIST. BLDG NO-01

DATE NO. OF SHEET

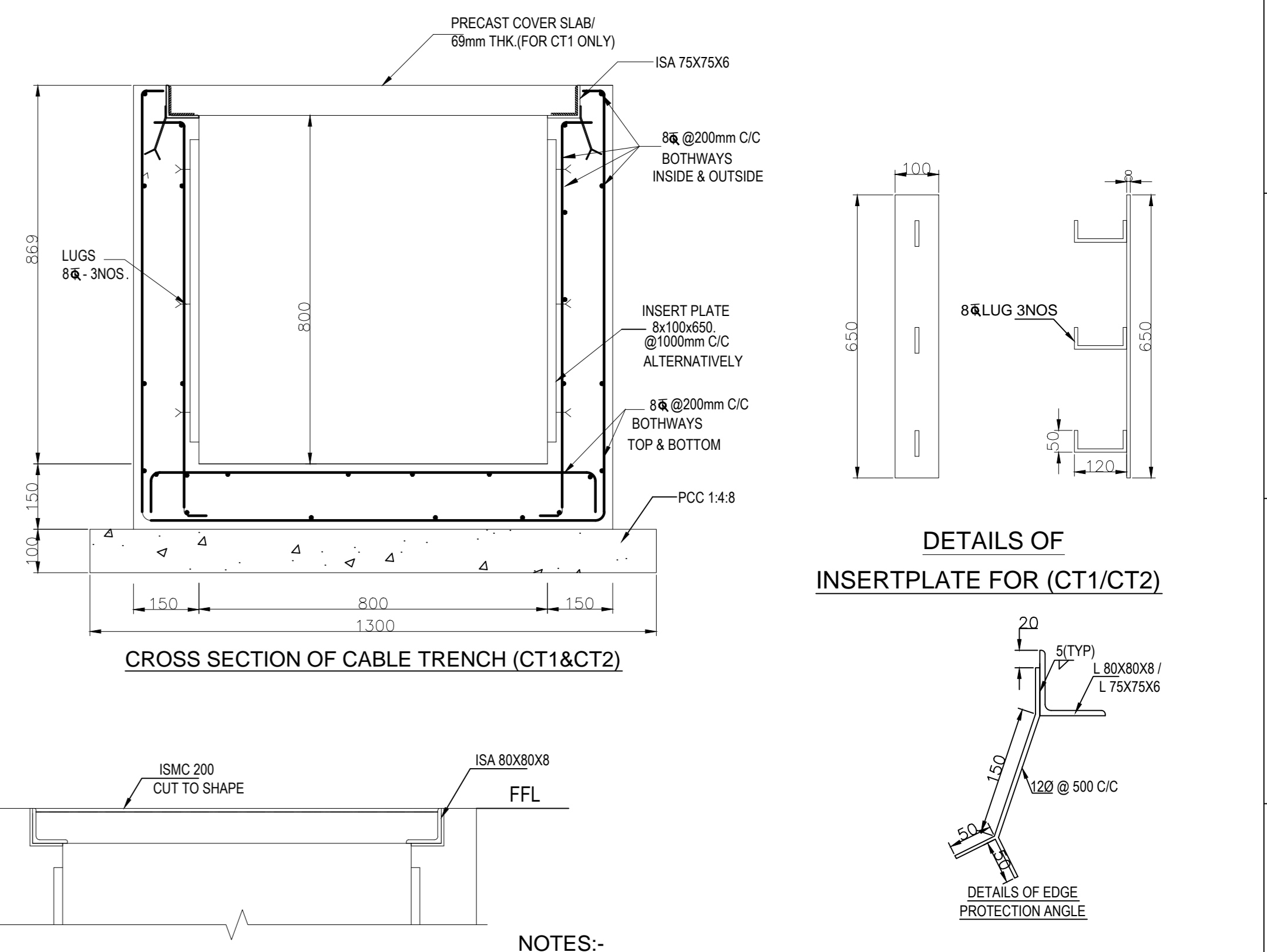
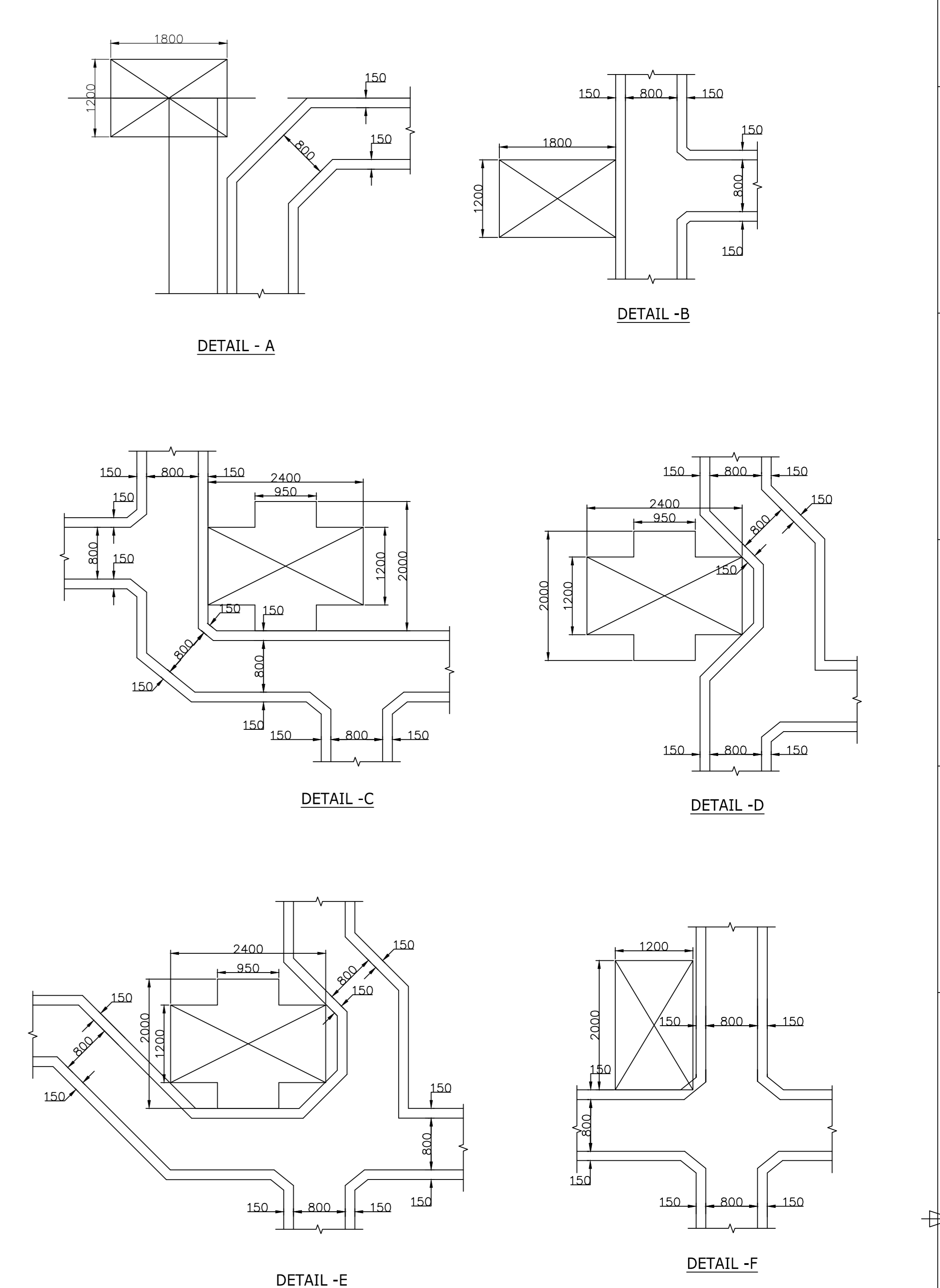
DESIGNED BY: T. Anujay Yagga
 CHECKED BY: K. Karunakar
 APPROVED BY: K. Karunakar

SCALE: 1/10, 1/20, 1/50, 1/100, 1/200, 1/400, 1/2000
 WEIGHT (kg):
 NO. OF ASSY / OLD DWG: NL
 NO. OF PARTS: NL

TITLE: DETAILS OF FOUNDATION AND CIVIL WORKS FOR PRODUCTION SHOP
 DRAWING NO: 01-TP-CEG-01266
 REV: 00

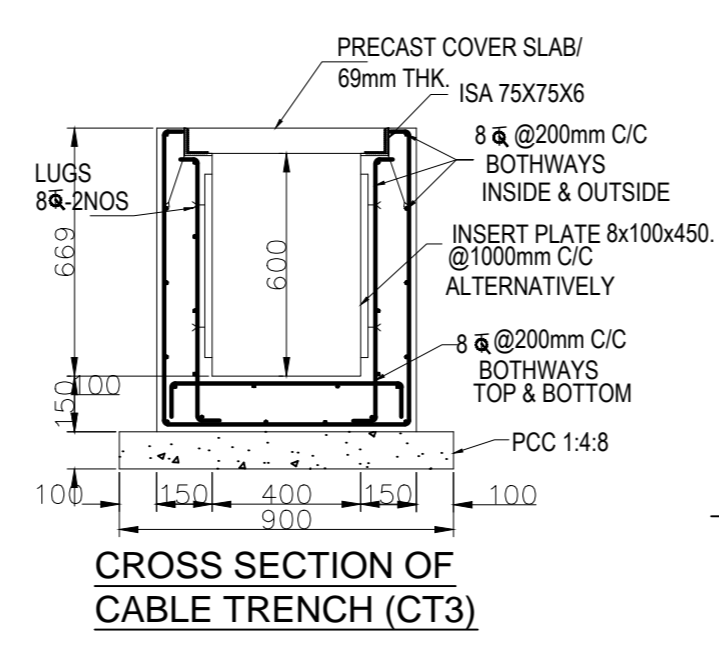


PLAN

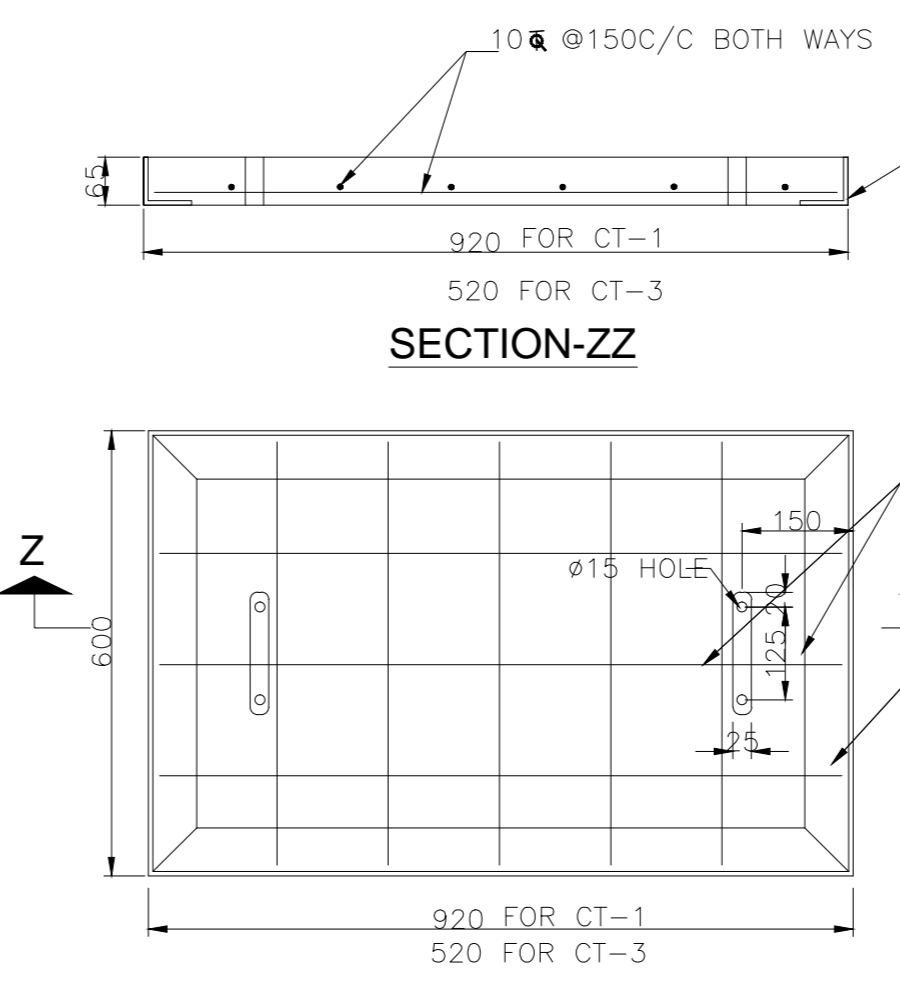


- NOTES:-**
- 1) ALL DIMENSIONS ARE IN 'MM' & LEVELS ARE IN 'M'
 - 2) DO NOT SCALE THE DRAWING. FOLLOW WRITTEN DIMENSION ONLY
 - 3) CLEAR COVER TO REINFORCEMENT AS FOLLOWS
 - 4) CABLE TRENCH - 15MM
 - 5) COVER SLAB - 15MM
 - 6) CONCRETE GRADE M20
 - 7) ALL REINFORCEMENT BARS SHALL BE HIGH YIELD STRENGTH DEFORMED BARS CONFORMING TO IS: 1786-(LATEST REVISION)
 - 8) IF FOUNDATION SOIL IS LOOSE AT FOUNDING LEVEL EXTRA EXCAVATION TO BE CARRIED OUT TILL HARD STRATA. EXTRA EXCAVATED PORTION TO BE FILLED WITH PCC1:4:8
 - 9) DEVELOPMENT LENGTH L_d = 50 TIMES THE DIA OF THE BAR
 - 10) THE DETAILS OF SHOWN IN THE DRAWING ARE BASED ON PRELIMINARY ENGG. THESE MAY VARY DURING DETAILED ENGG.

TENDER PURPOSE ONLY

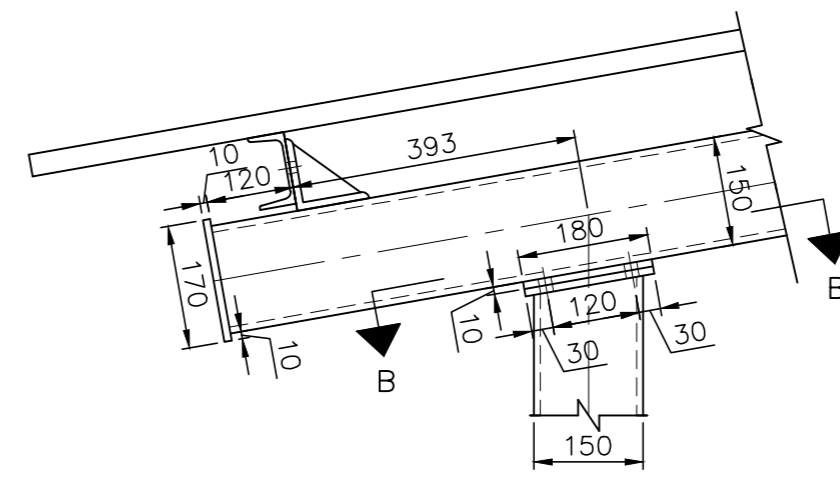
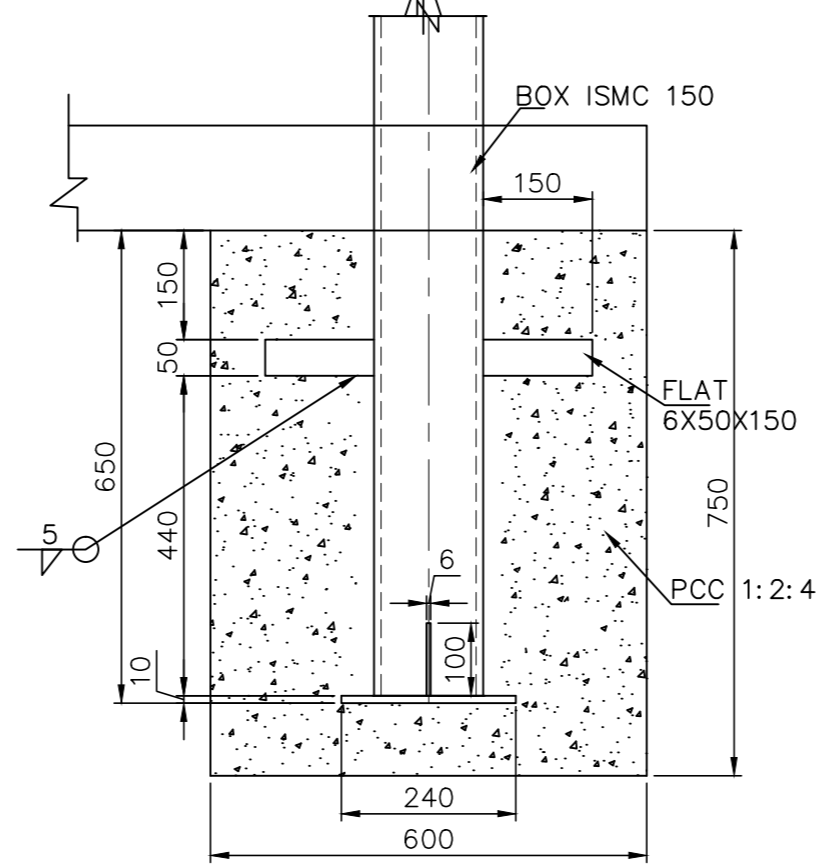
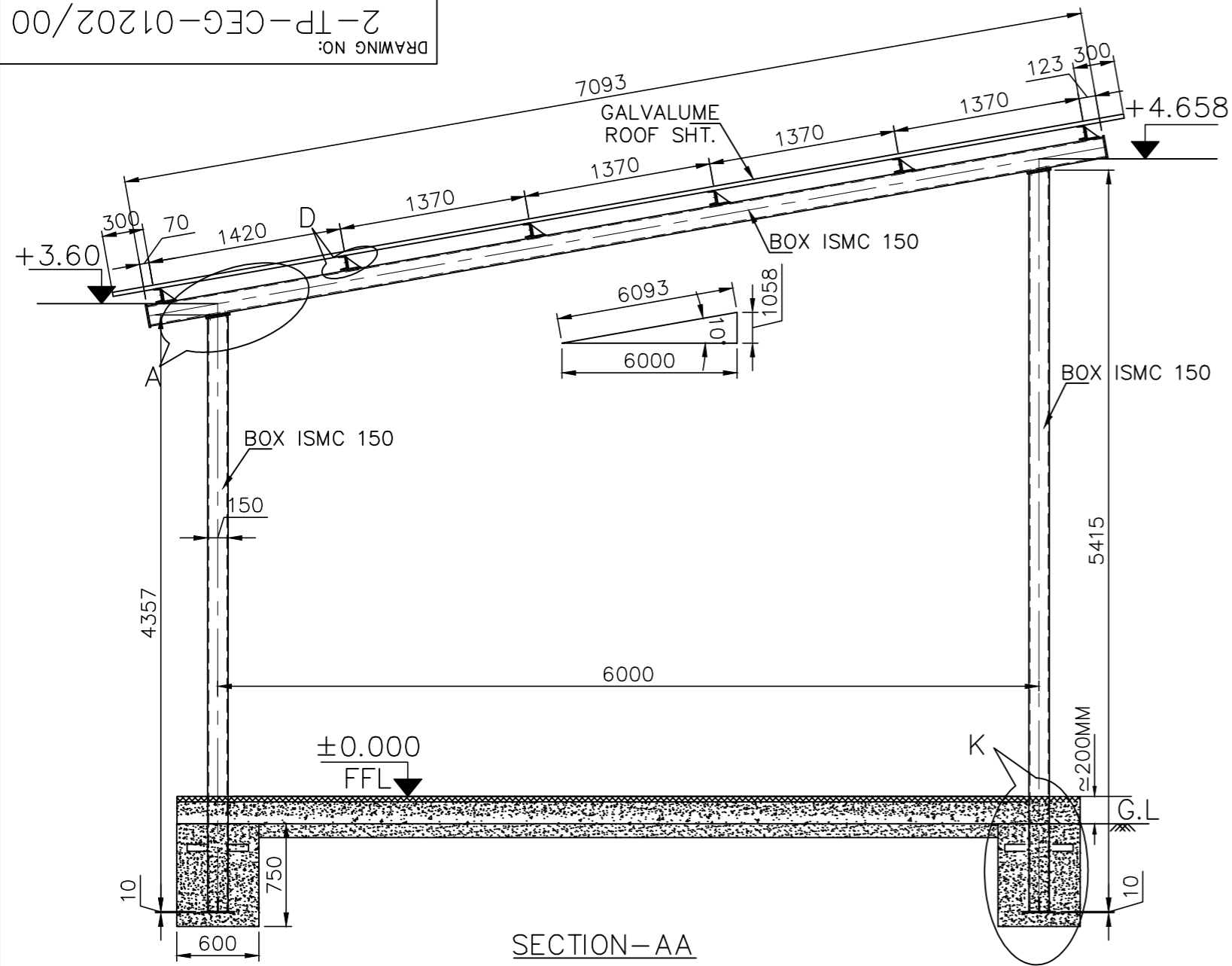


CROSS SECTION OF CABLE TRENCH (CT3)

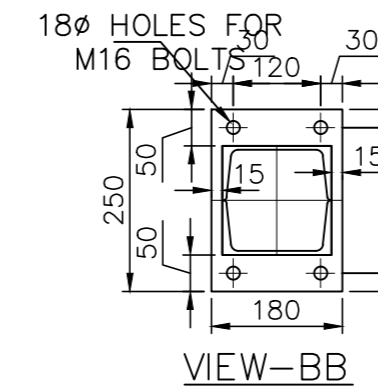


SECTION-ZZ

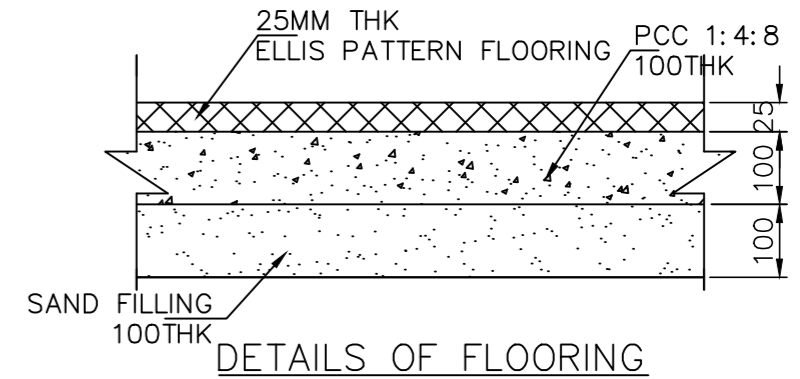
TYPE OF PRODUCT OR NAME OF CUSTOMER/PROJECT		POWER EQUIPMENT FABRICATION PLANT AT SAKOLI BHANDARA DIST.	
Bharat Heavy Electricals Ltd UNIT: HIGH PRESSURE BOILER PLANT TIRUCHIRAPALLI - 620014		DRN NAME P. ANANTHARAJU	SIGNATURE
DATE	SCALE	WEIGHT (kg)	NO. OF SHEETS
01/01/2024	1:100	2200	01
TITLE		CAGE CODE	REV
DETAILS OF CABLE TRENCHES IN PRODUCTION SHOP		U 01	00



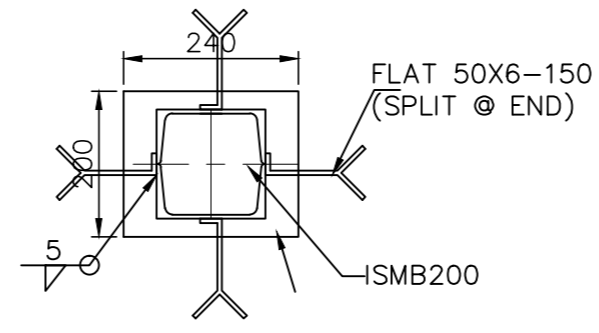
DETAIL-A



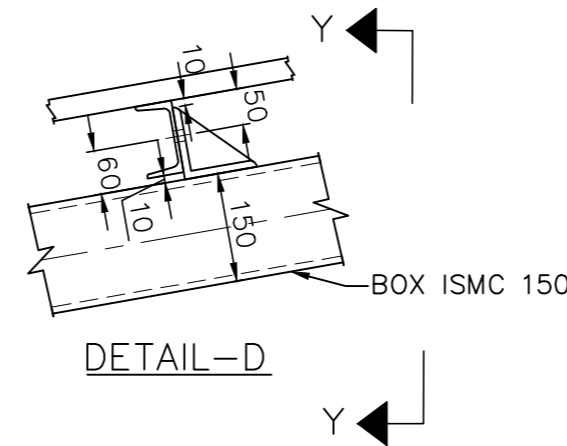
VIEW-BB



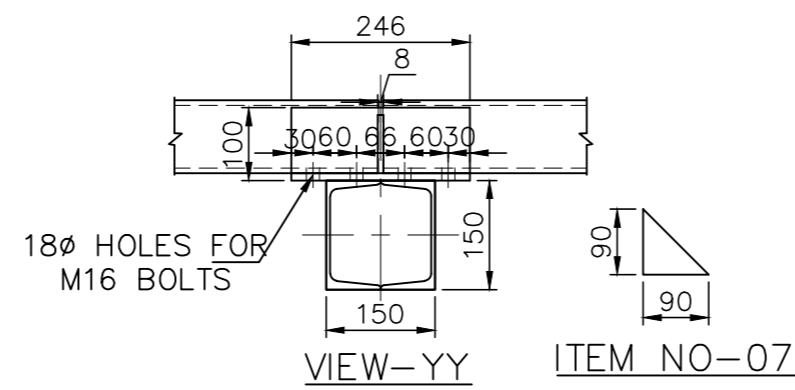
DETAILS OF FLOORING



DETAIL-K



DETAIL-D



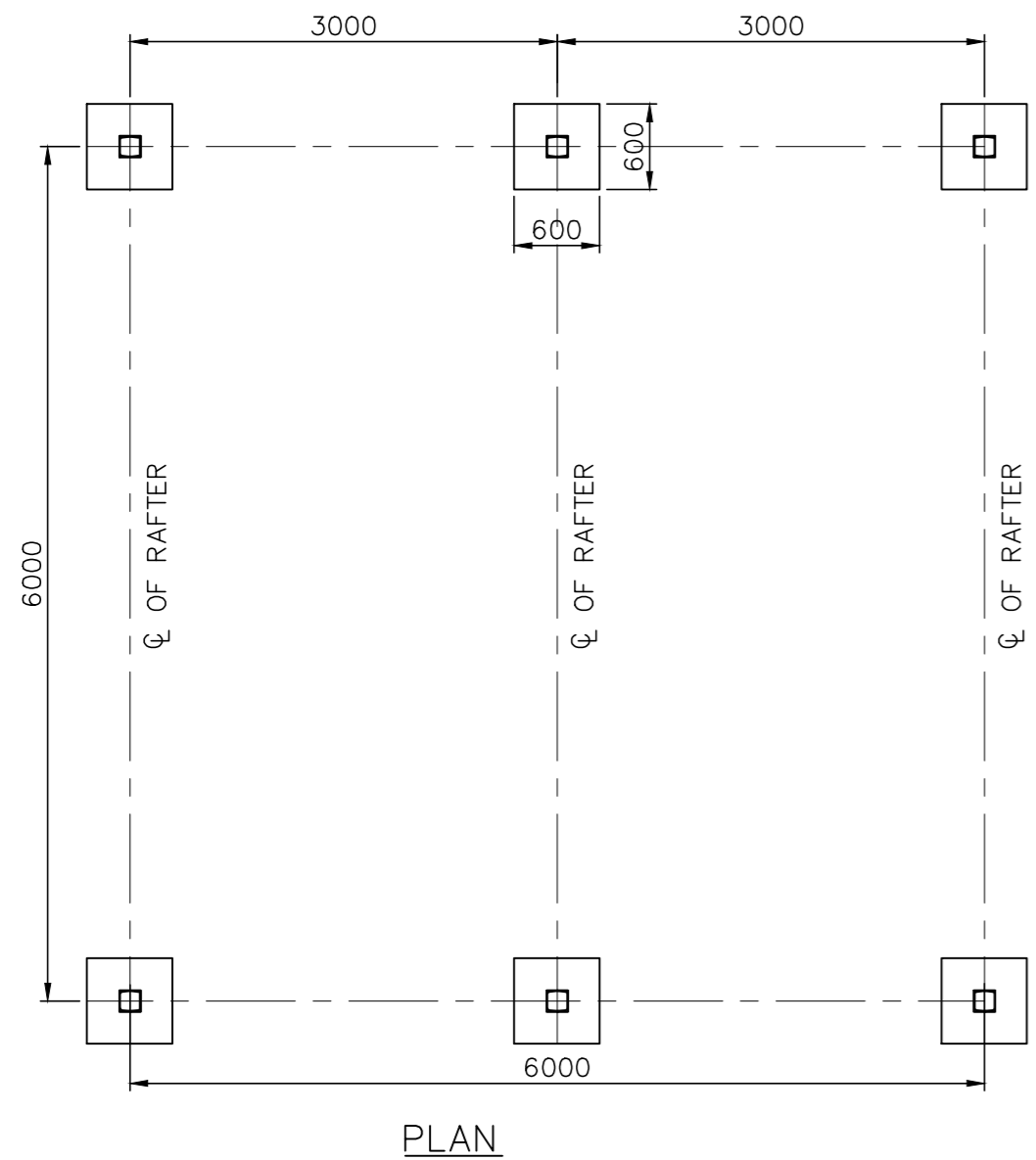
VIEW-YY

ITEM NO-07

NOTES

1. ALL DIMENSIONS ARE IN MM AND LEVELS ARE IN METRES
2. DONOT SCALE THE DRAWING FOLLOW WRITTEN DIMENSIONS ONLY
3. CONCRETE GRADE M20
4. REF. SEPARATE DWG FOR THE LOCATION & DETAILS OF CSS.
4. THE DETAILS SHOWN THE DRAWINGS ARE BASED ON PRELIMINARY ENGINEERING.THESE MAY VARY DURING DETAILED ENGINEERING

TENDER PURPOSE ONLY



PLAN

CAUTION: The information on this document is the property of BHARAT HEAVY ELECTRICALS LTD. It must not be used directly or indirectly in any way detrimental to the interest of the company.	TYPE OF PRODUCT OR NAME OF CUSTOMER/PROJECT		POWER EQUIPMENT FABRICATION PLANT AT SAKOLI, BHANDARA DIST BLDG 22B				
	Bharat Heavy Electricals Ltd UNIT: HIGH PRESSURE BOILER PLANT TIRUCHIRAPALLI - 620014		DRN	NAME	SIGNATURE	DATE	NO. OF VAR
			CHD	R.Palanikumar		01.06.13	
			APPD	K.Gunasekaran		01.06.13	
	DEPT CIVIL CODE 2200	GRADE OF UNTOL DIM C/M/F	SCALE	WEIGHT (Kg)	REF TO ASSY / OLD DWG	ITEM NO	No OF ITEMS
TITLE DETAILS OF SHED FOR COMPACT SUBSTATION			CARD CODE U 01	DRAWING NO : 2-TP-CEG-01202		REV 00	