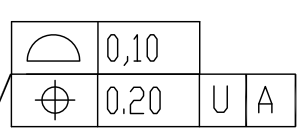
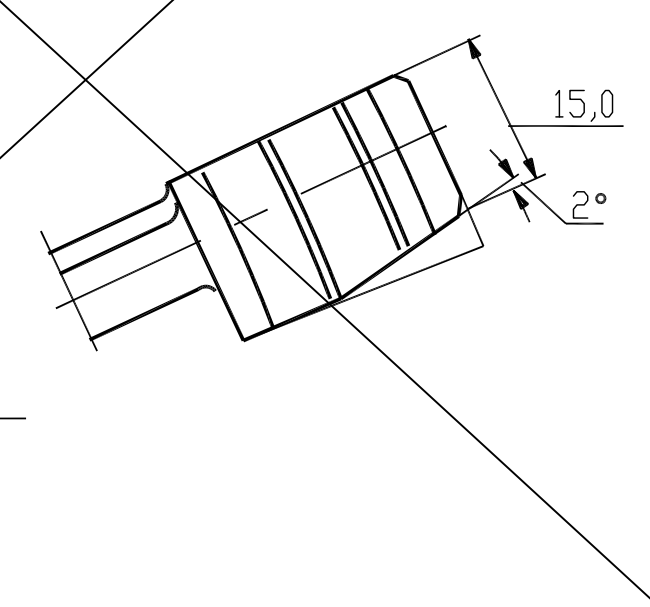
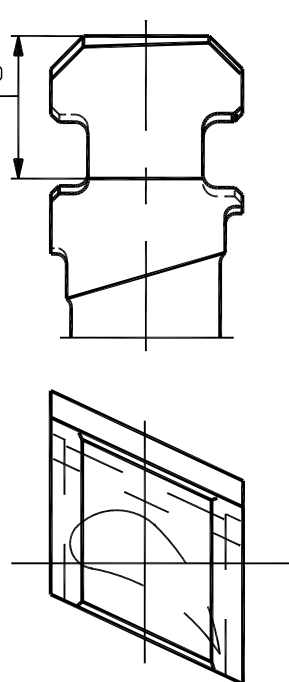


110

1. TOLERANCES:



JOINT BLADE AT PARTING PLANE (2 NO.)
MADE BY REWORKING ON GUIDE BLADE(RIGHT)



L

R
'RIGHT'

RIGHT
AS DRAW

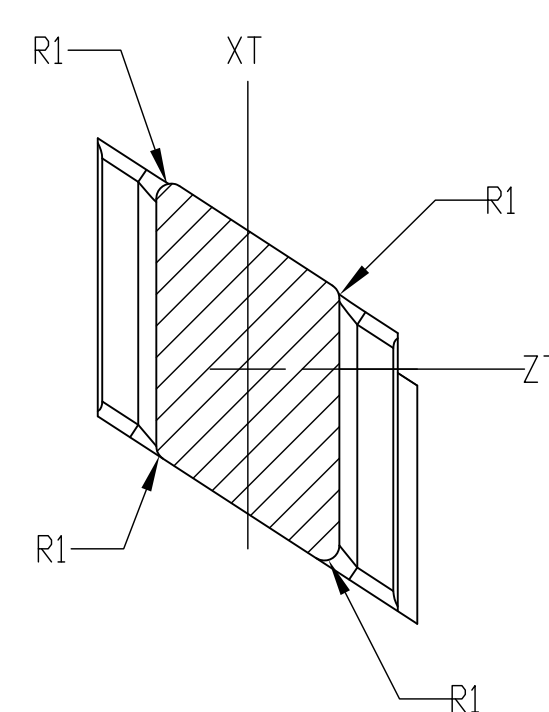
3.2 / ALL OVER EXCEPT ($\nabla \frac{x}{\sqrt{R_{z100}}} = \frac{12.5}{\sqrt{R_{z2.5}}} = \frac{0.4}{\sqrt{R_{z10}}} = \frac{1.6}{\sqrt{R_{z0.25}}}$)
 OTHERWISE STATED



A1 - A1	-10.0	18.79	5.65	9.60	0.10	49.38	6.05
A2 - A2	0.0	19.57	5.93	4.41	0.10	48.93	6.3
A12-A12	10.0	20.35	6.20	2.06	0.11	48.51	6.56
A21-A21	19.0	21.02	6.43	2.42	0.11	48.12	6.77

LOCAL SMALLEST RADIUS OF CURVATURE ON PRESSURE SIDE: 12.3 M

TERMINATED	ALtered DATE	ALTERED	REV.	DATE	ALTERED
ID/APPD	CHD/APPD	CHD/APPD			CHD/APPD



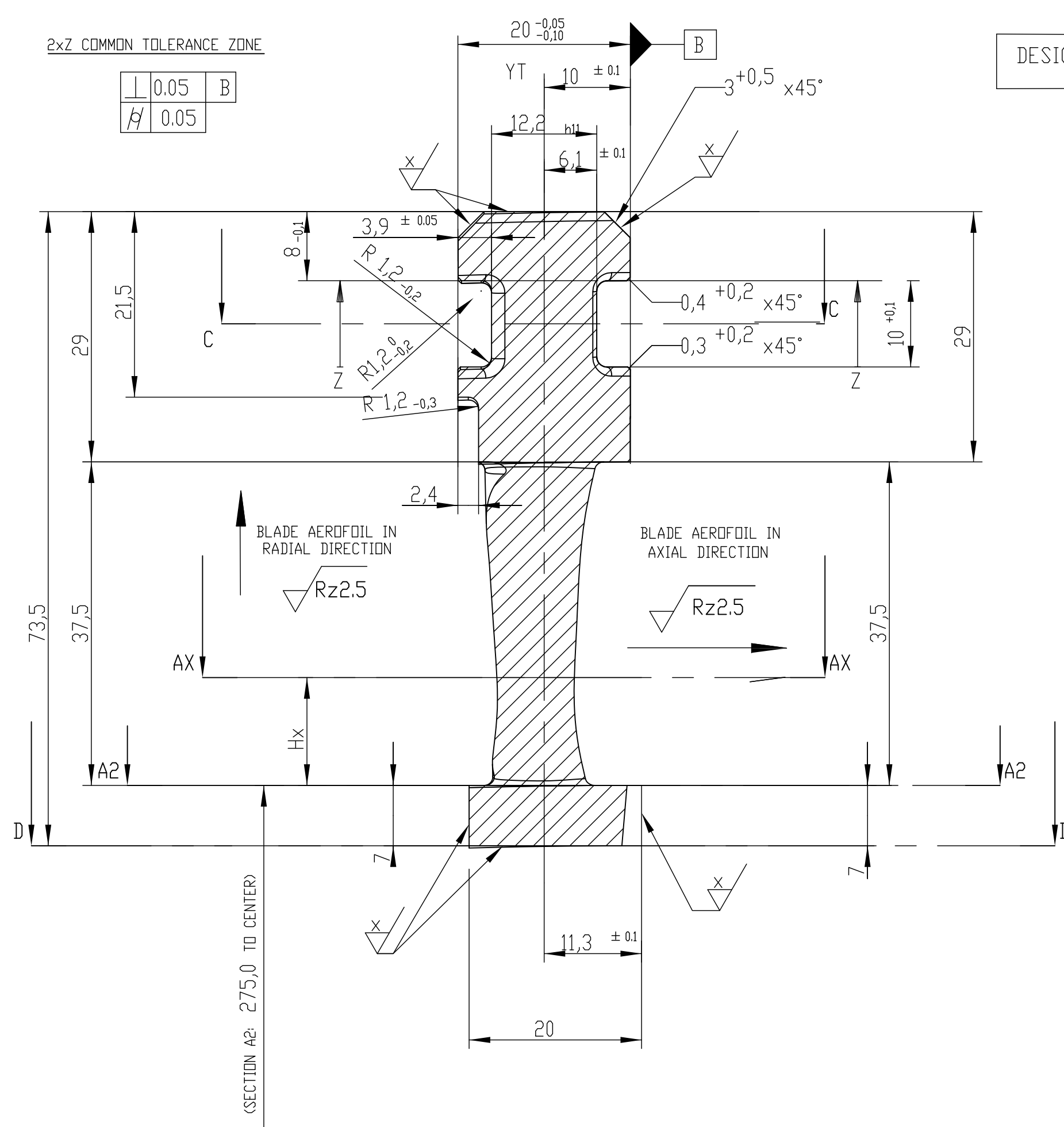
POS. NO.: 1

DESIGN "RIGHT"

DIRECTION OF
STEAM FLOW

2x2 COMMON TOLERANCE ZONE

\perp	0.05	B
β	0.05	



3DS DIMENSIONS: AEROFIL OVERHANG = 0,0

3DS DIMENSIONS: AEROFOIL OVERHANG = 0,0

[illegible]