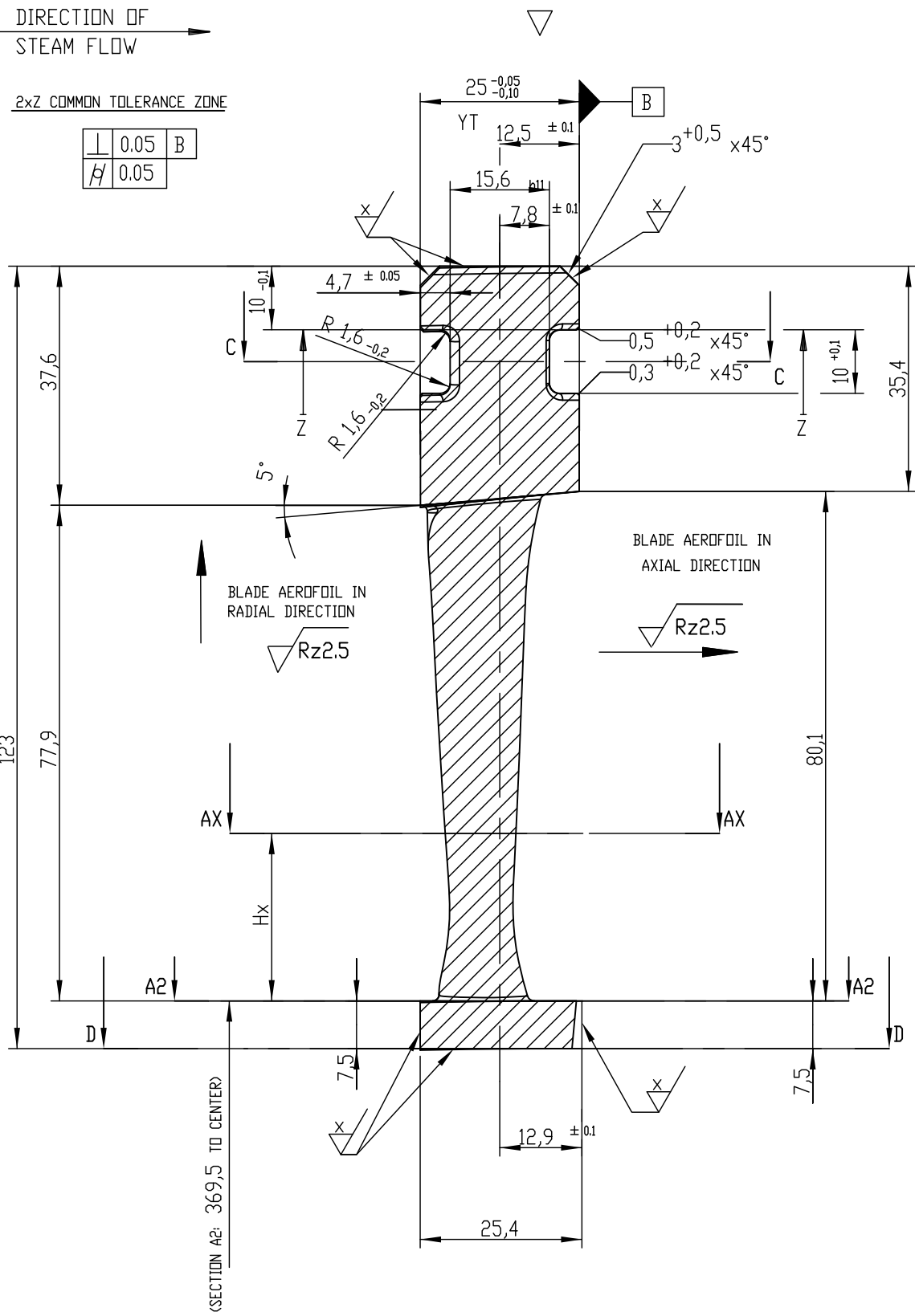


INVENTORY NO. _____
SIGN. AND DATE _____
S-135-S25-TR23/080845
S-135-S25-TR23/080845
GENERAL DIMENSIONAL LIMITS, FITS & TOLERANCES AS PER HY0230261
THE INFORMATION ON THIS DOCUMENT IS THE PROPERTY OF BHARAT HEAVY ELECTRICALS LIMITED. IT MUST NOT BE USED DIRECTLY OR INDIRECTLY IN ANY WAY DETRIMENTAL TO THE INTEREST OF THE COMPANY

FIRST ANGLE PROJECTION

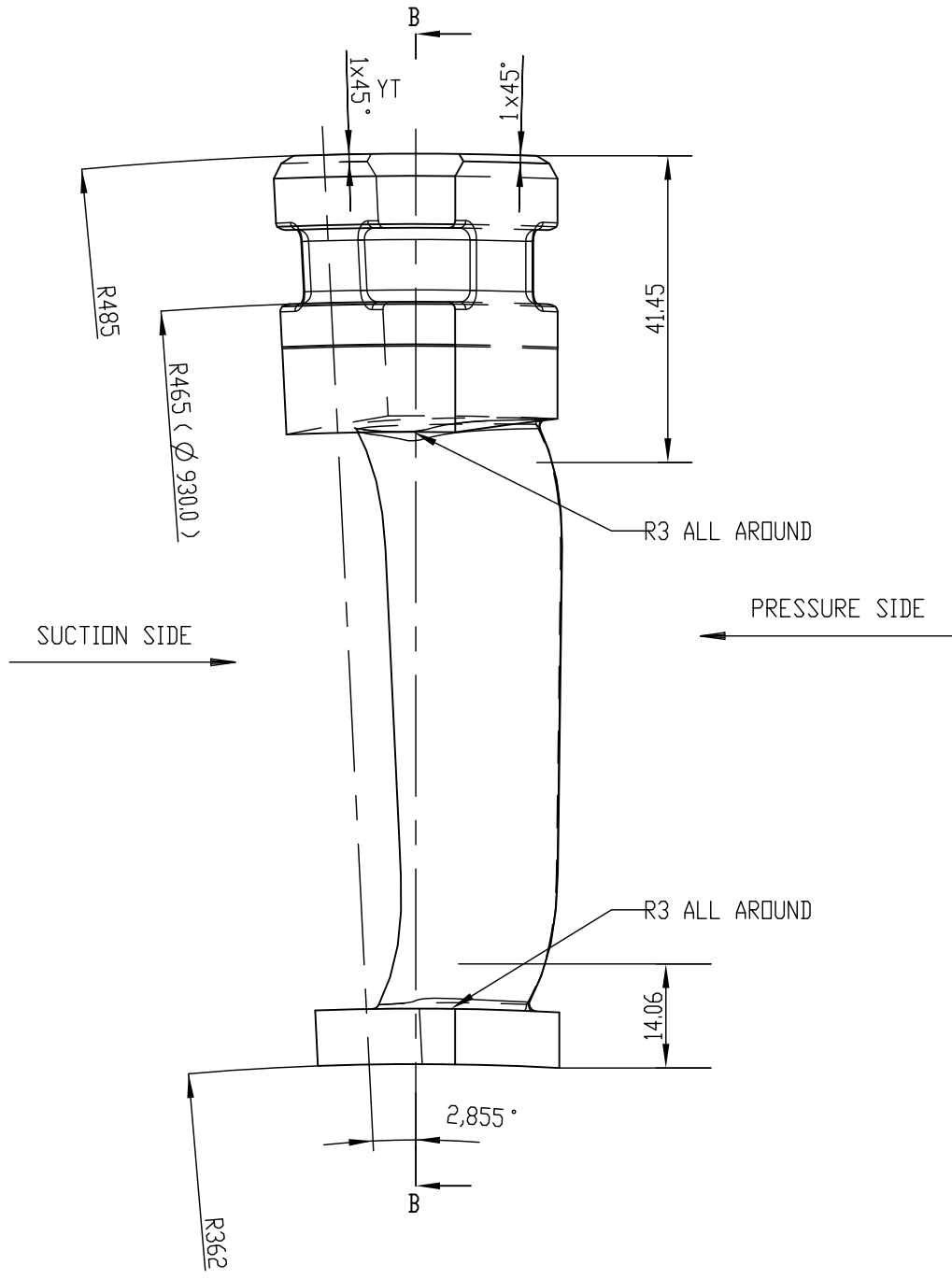
(ALL DIMENSIONS ARE IN mm)

SECTION B-B



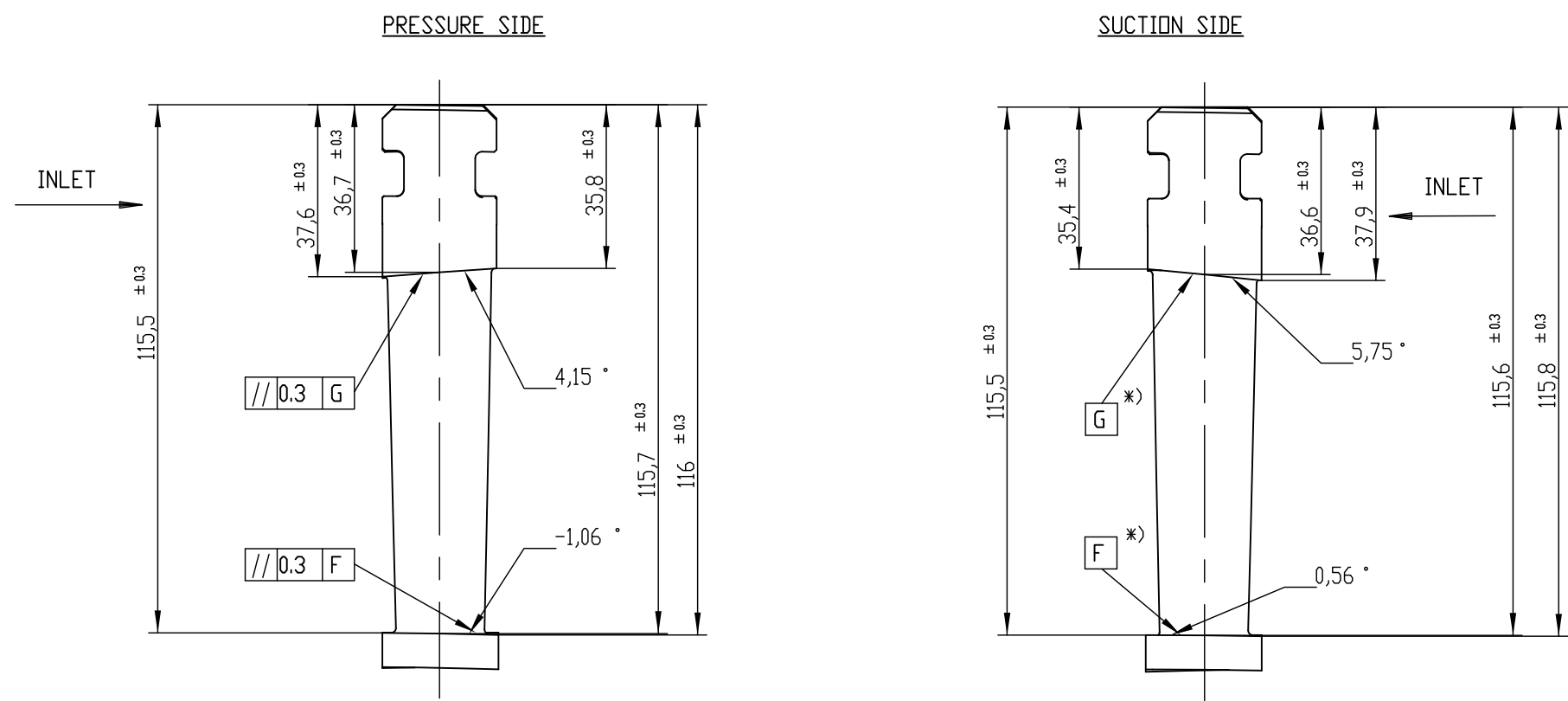
POS. NO: 1

DESIGN 'RIGHT'

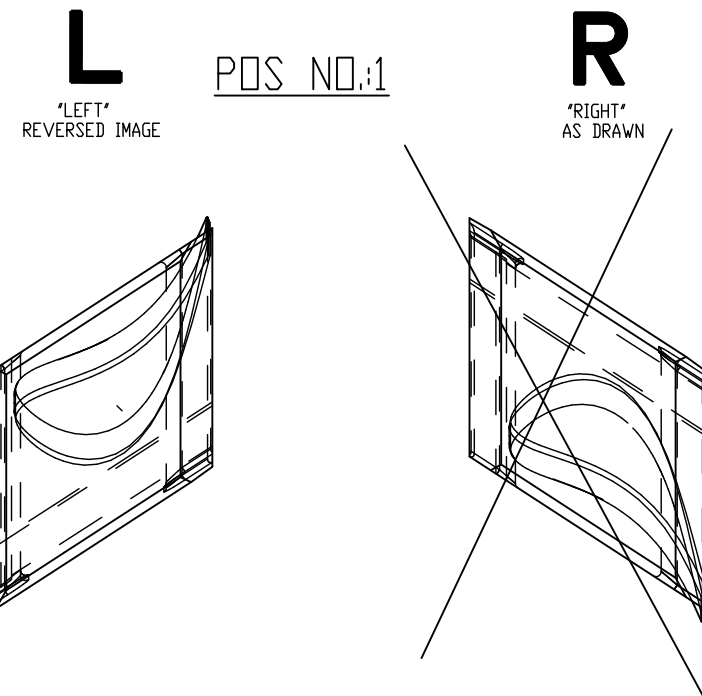


SCHEME FOR D AND S DIMENSIONS

*) REFERED TO ADJACENT BLADE



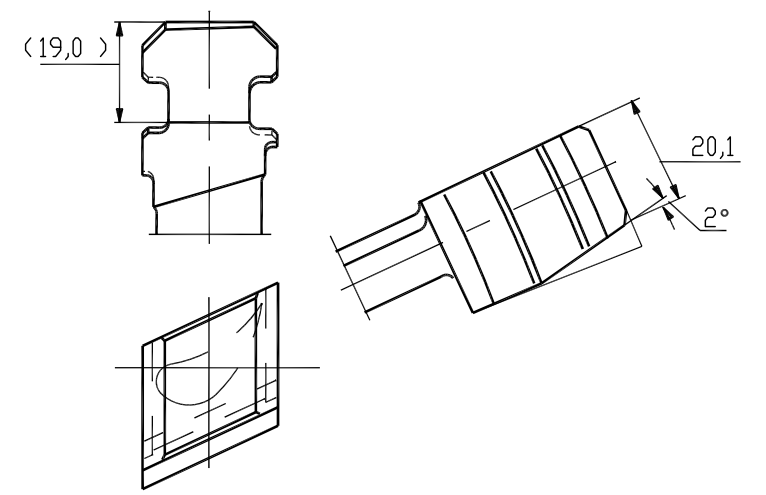
DESIGN: 'LEFT' DESIGN: 'RIGHT'



BLADE SHOWN IN DIRECTION OF STEAM FLOW

POS. NO:2

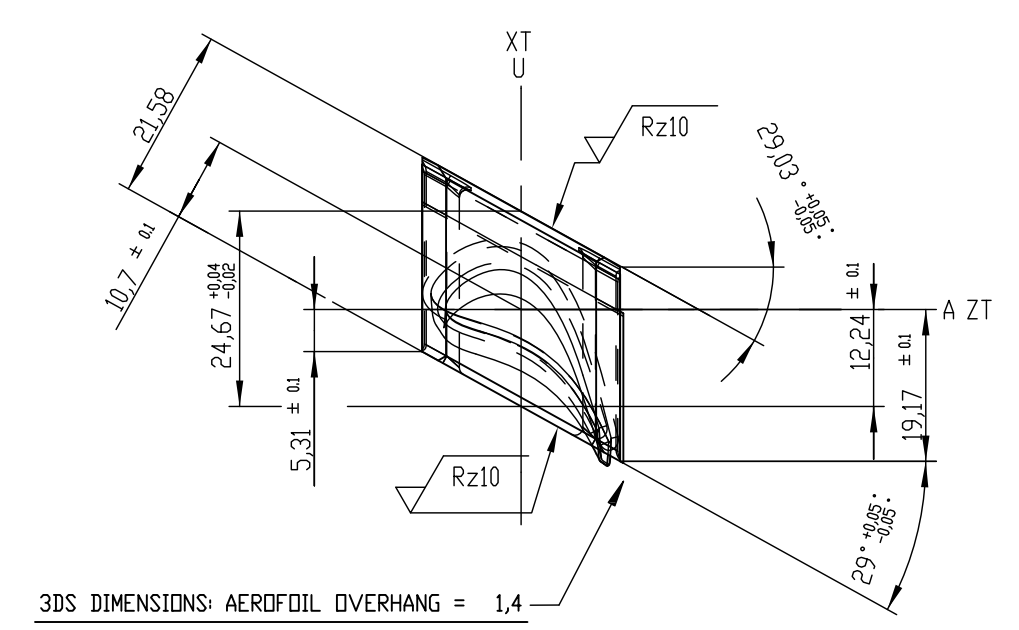
JOINT BLADE AT PARTING PLANE (2 NO.)
MADE BY REWORKING ON GUIDE BLADE(LEFT)



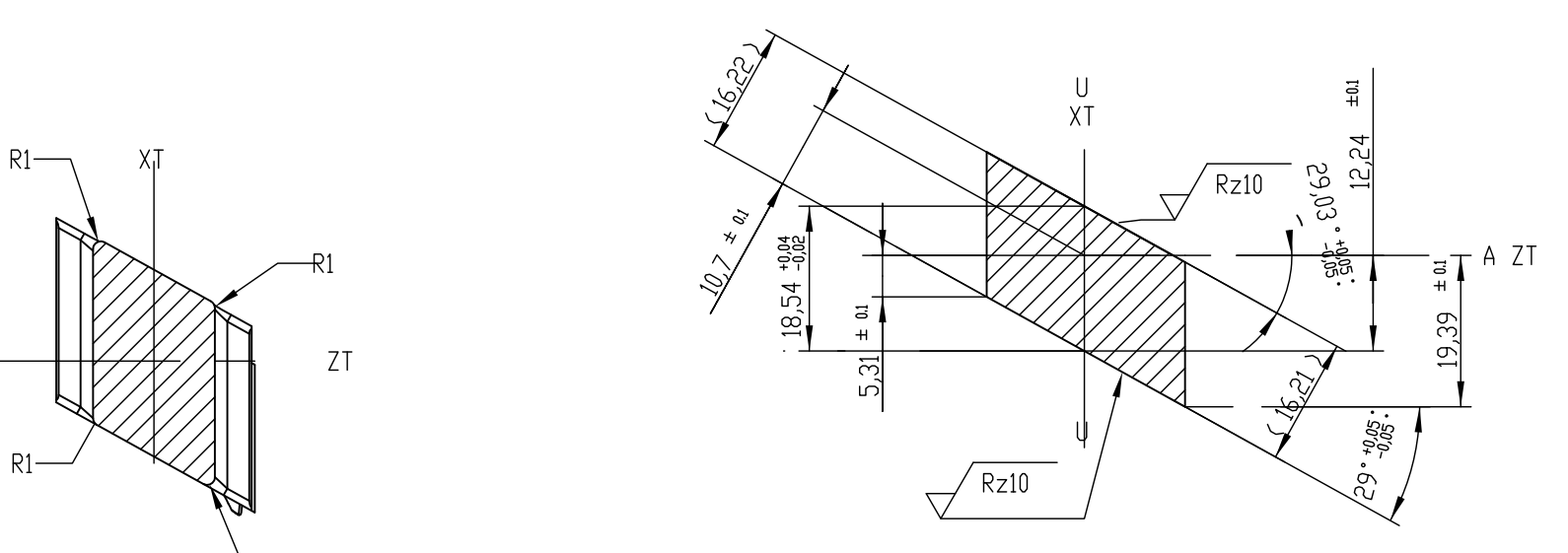
SECTION AX	I	Hx	Lges	AMI	UMA	RHk	BBi	D
A1 - A1	I	-10.0	24.48	9.26	10.58	0.13	52.50	7.89
A2 - A2	I	0.0	25.18	9.51	5.28	0.13	52.24	8.11
A6 - A6	I	12.0	26.02	9.82	2.06	0.14	51.94	8.38
A15-A15	I	39.0	27.87	10.48	3.01	0.15	51.27	8.98
A24-A24	I	66.0	29.67	11.13	4.42	0.16	50.59	9.56

LOCAL SMALLEST RADIUS OF CURVATURE ON PRESSURE SIDE: 16.1 MM

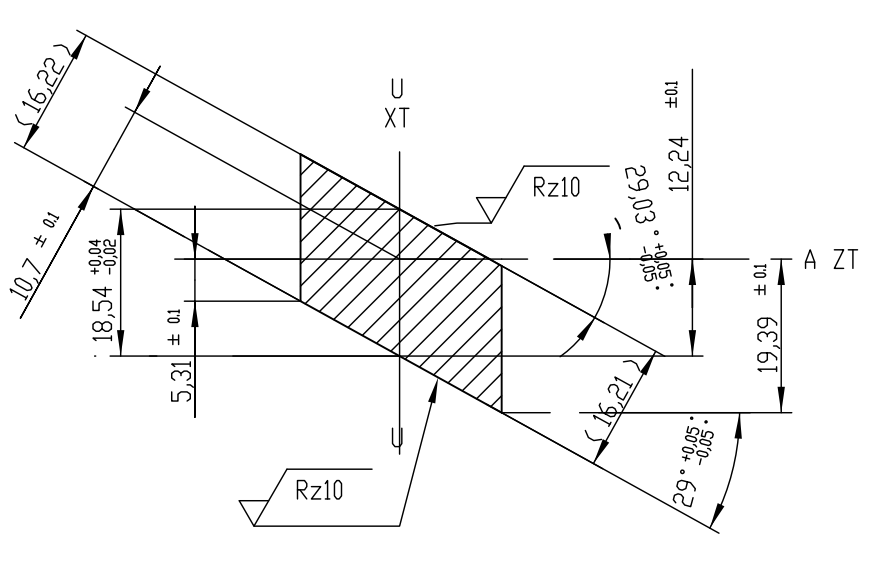
VIEW X



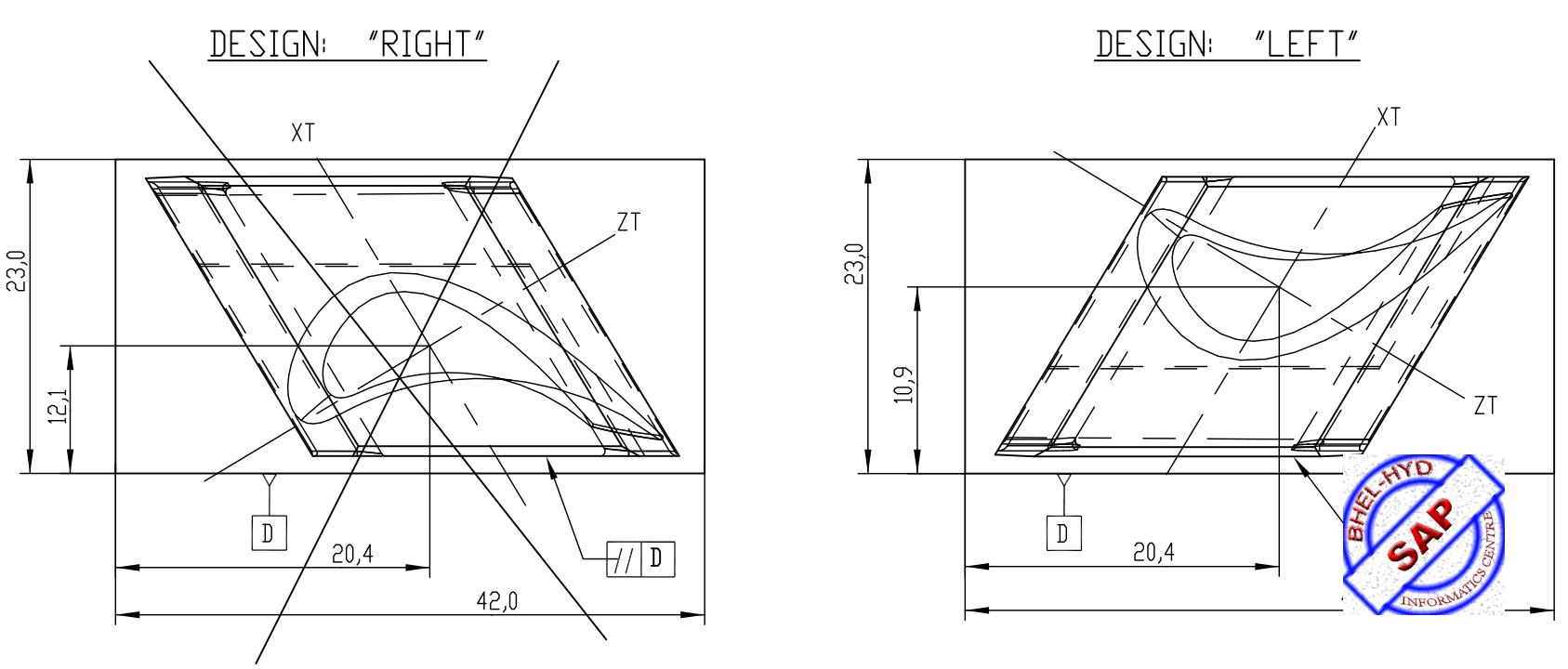
SECTION C-C



SECTION D-D

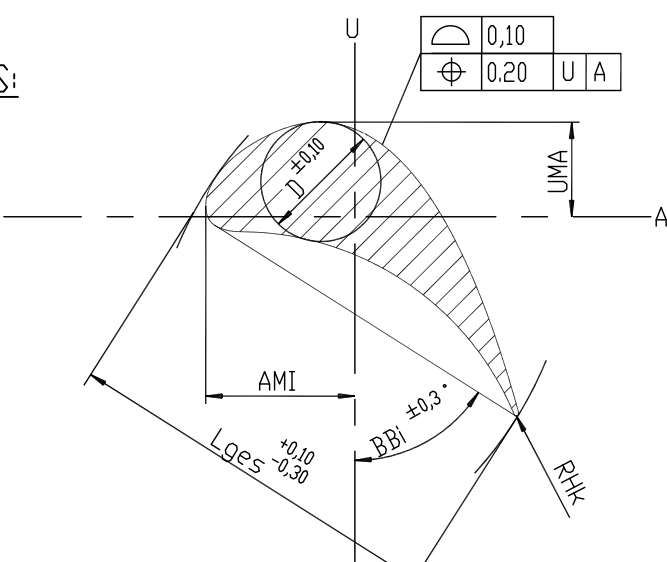


CENTRE DISTANCES IN SEMI-FINISHED CONDITION



TECHNICAL REQUIREMENTS

1. TOLERANCES:



2. STRAK NUMBER: 80539
3. NUMBER OF BLADES/ROW: 124
(INCLUDING JOINT BLADES)

TYPE OF PRODUCT OR NAME OF CUSTOMER/PROJECT		NAME		SIGN.	DATE	IND. OF VAR.
BHARAT HEAVY ELECTRICALS LTD HYDERABAD		A. HEMASUNDAR			09/02/2005	
		K. THIRUMATHULU			09/02/2005	-NA-
		T.S. PRABHAKAR			09/02/2005	-NA-
REF. TO L1B	UNITS C/M/F	BINS. OR C/M/F	SCALE NTS	WEIGHT KGS	REF. TO ASSY. DRG.	ITEM NO.
45				0.27	-NA-	-NA-
TITLE GUIDE BLADE - LEFT						REV. 00
SHT. No 01						ND. OF SHT. 21