

THE INFORMATION ON THIS DOCUMENT IS THE PROPERTY OF BHARAT HEAVY ELECTRICALS LIMITED. IT MUST NOT BE USED DIRECTLY OR INDIRECTLY IN ANY WAY DETRIMENTAL TO THE INTEREST OF THE COMPANY

S-135-S29-TR165/08084M

INVENTORY NO. _____

SIGN. AND DATE _____

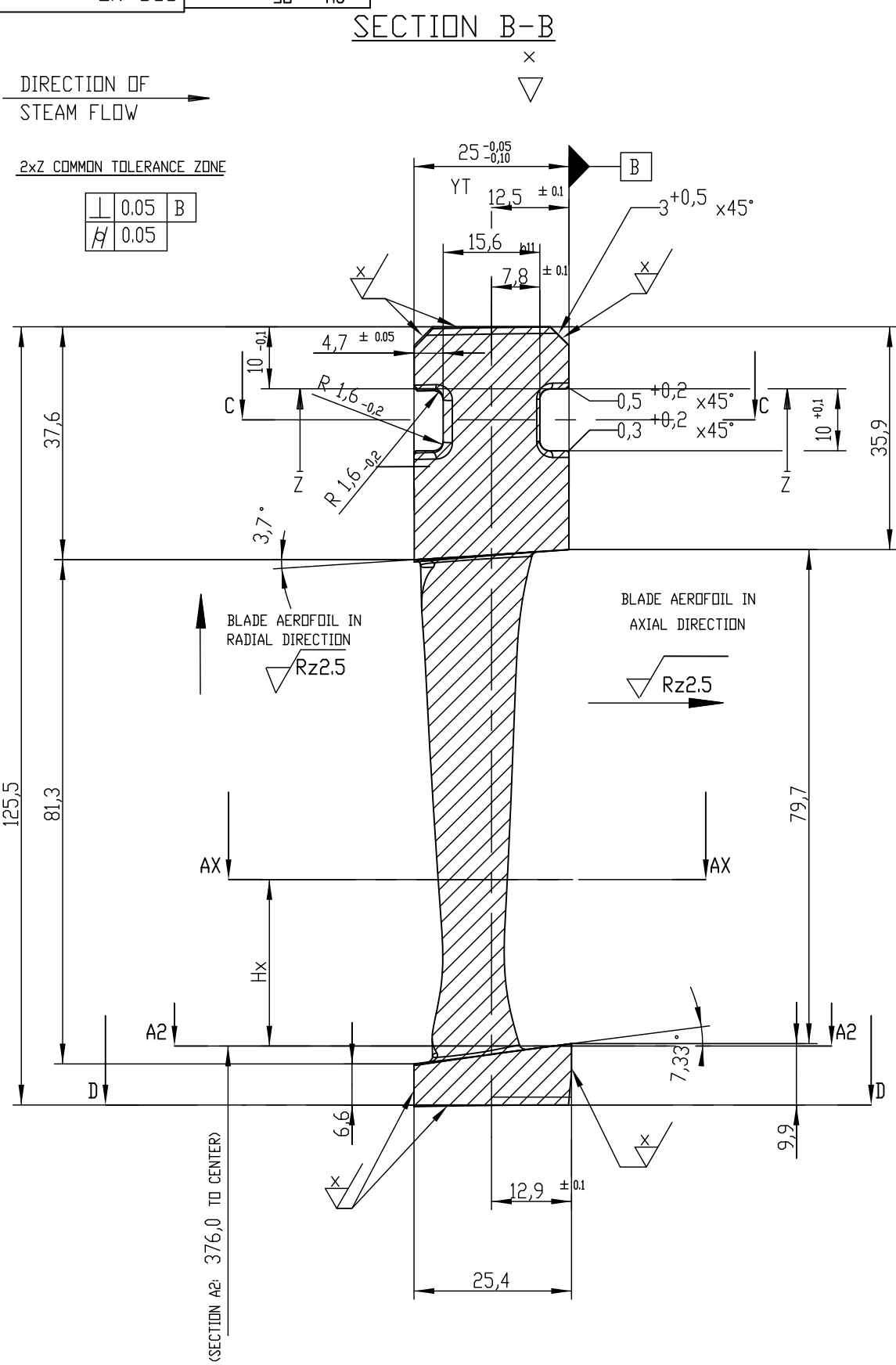
REF. ENG. NO. _____

COMP. DATE _____

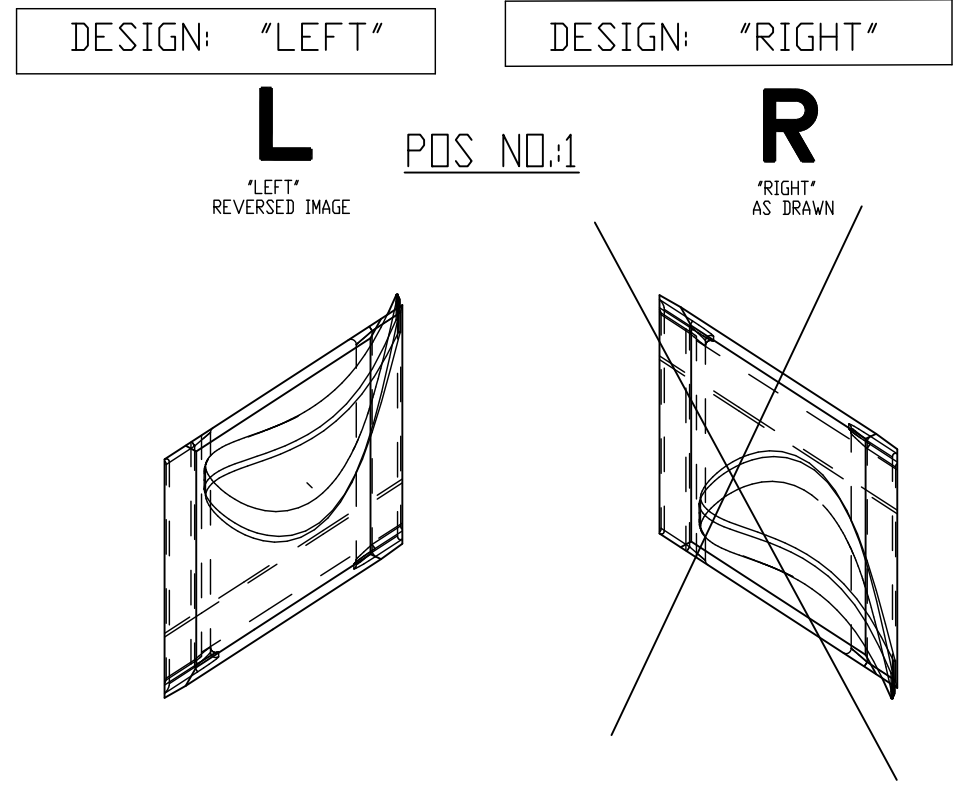
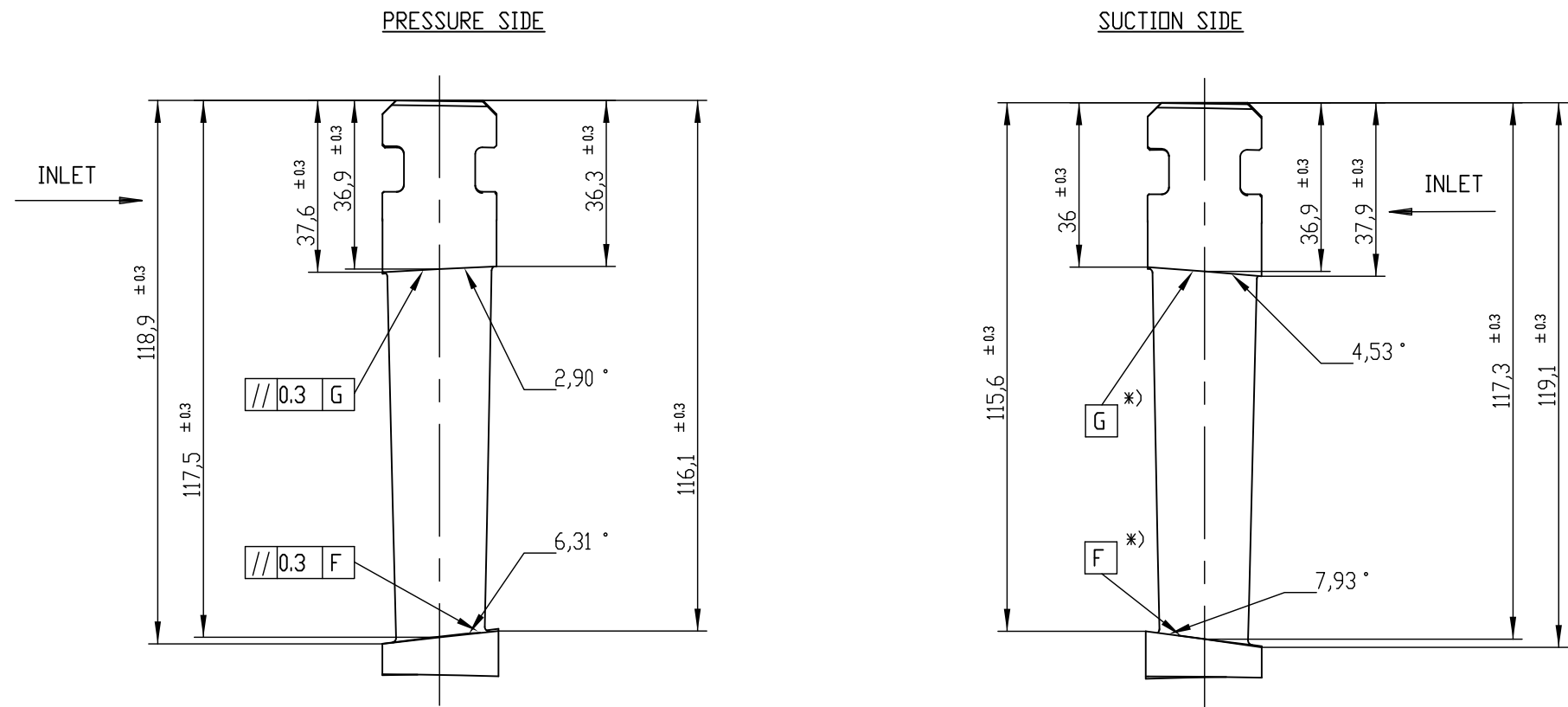
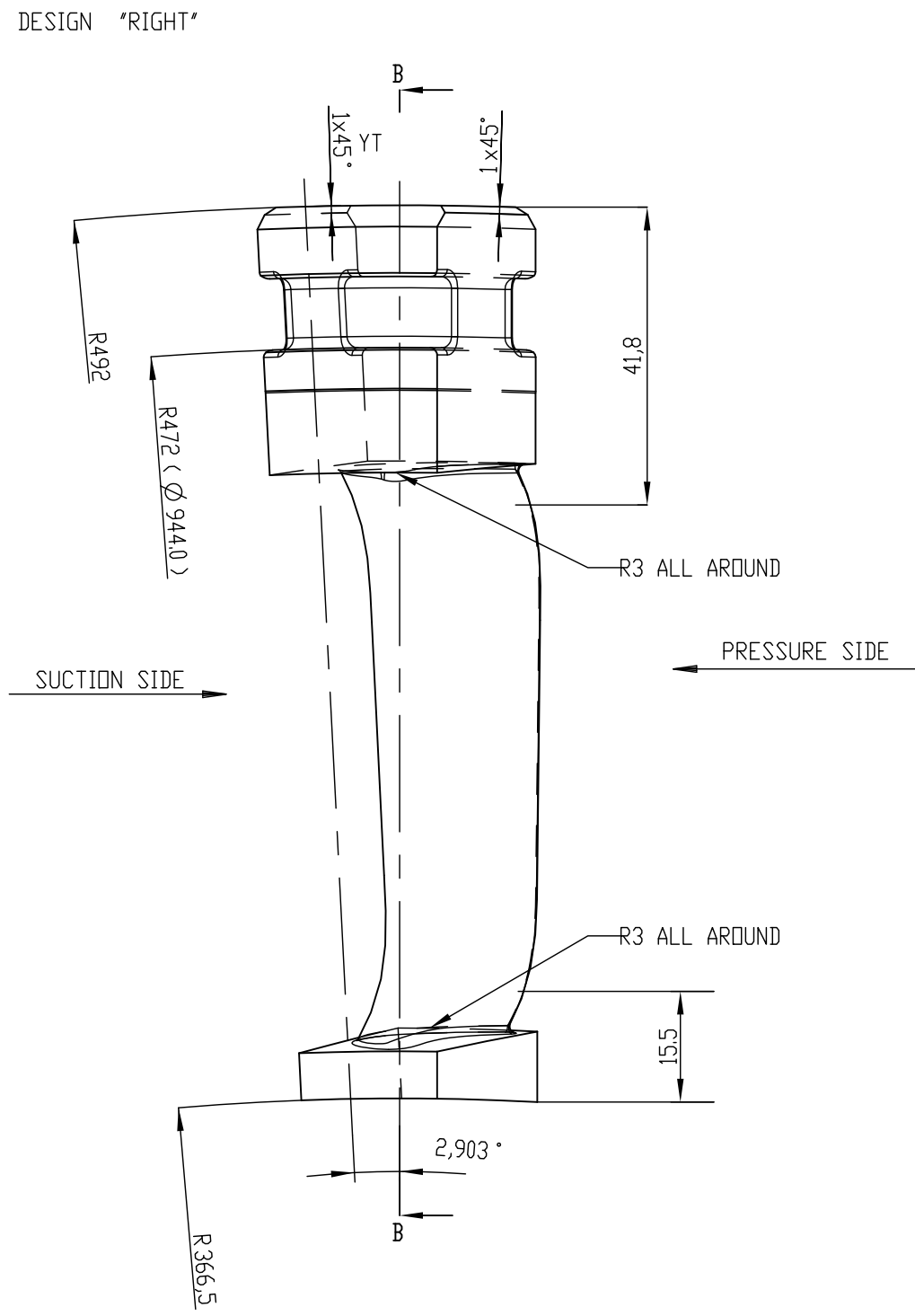
FILE NAME _____

T-134

GENERAL DIMENSIONAL LIMITS, FITS & TOLERANCES AS PER HY0230261



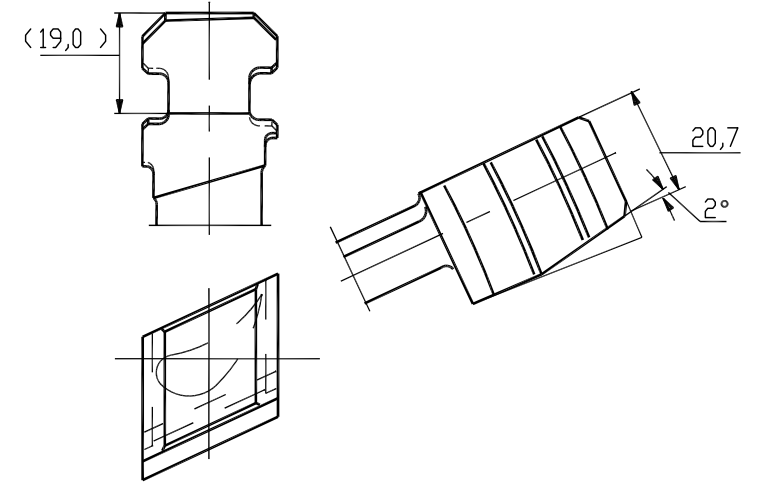
POS. NO: 1



BLADE SHOWN IN DIRECTION OF STEAM FLOW

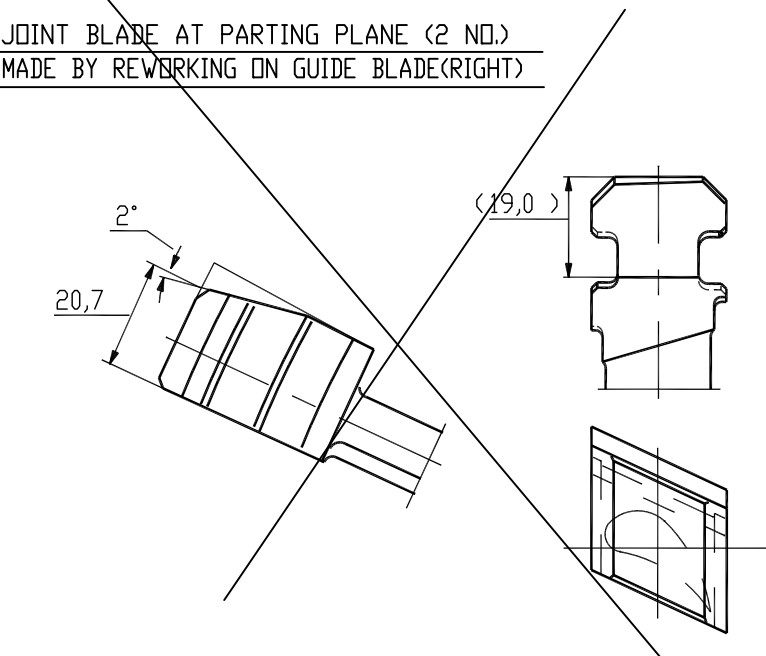
POS NO:2

JOINT BLADE AT PARTING PLANE (2 NO.)
MADE BY REWORKING ON GUIDE BLADE(LEFT)



SECTION AX 1	Hx	Lges	AMI	UMA	RHk	BBi	D
A1 - A1	-10.0	24.58	9.30	10.51	0.13	52.50	7.92
A2 - A2	0.0	25.28	9.55	5.22	0.14	52.24	8.15
A6 - A6	12.0	26.12	9.86	2.02	0.14	51.94	8.42
A15-A15	39.0	27.97	10.52	3.02	0.15	51.27	9.01
A24-A24	66.0	29.77	11.17	4.49	0.16	50.59	9.59

LOCAL SMALLEST RADIUS OF CURVATURE ON PRESSURE SIDE: 16.1 MM

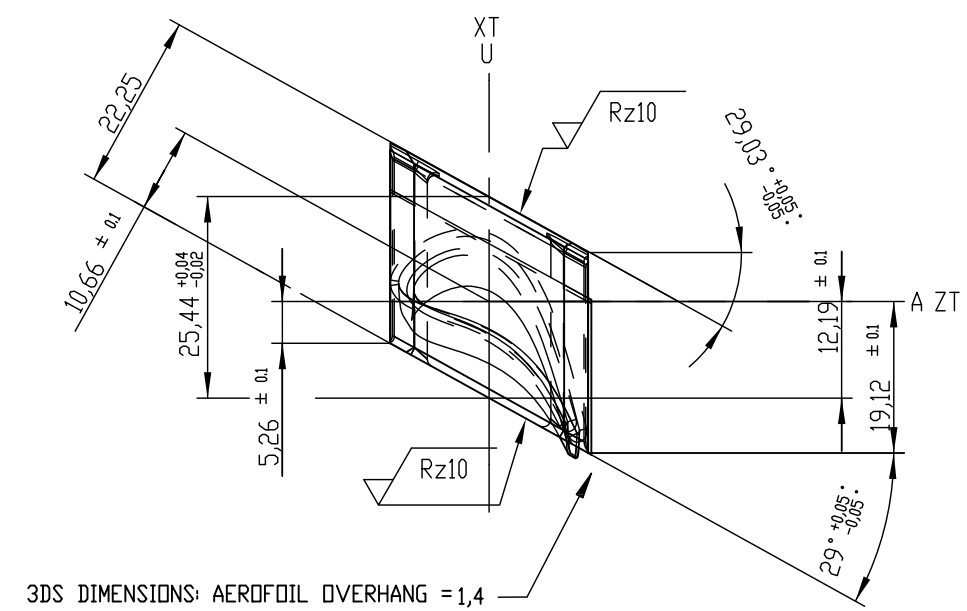


TECHNICAL REQUIREMENTS

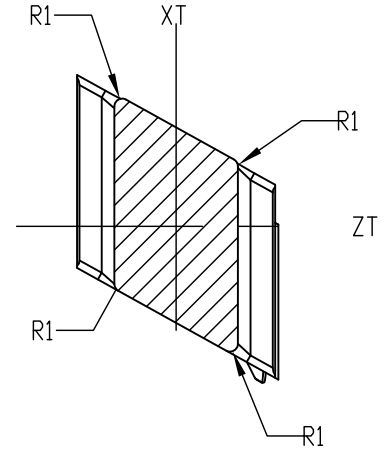
1. TOLERANCES:
2. STRAK NUMBER: 80540
3. NUMBER OF BLADES/ROW: 122
(INCLUDING JOINT BLADES)

TYPE OF PRODUCT OR NAME OF CUSTOMER/PROJECT		NAME		SIGN.	DATE	IND OF VAR.
BHARAT HEAVY ELECTRICALS LTD HYDERABAD		A. HEMASUNDAR			09/02/2005	
CHD: K. THIRUMATHULU		T.S. PRABHAKAR			09/02/2005	-NA-
REF. TITL	UNTL. OR C/M/F	BINS.	SCALE	WEIGHT (KG)	REF. TO ASSY. DRG.	ITEM NO.
415			NTS	0.19	-NA-	-NA-
TITLE GUIDE BLADE - LEFT						REV. 00
CARB CODE						ND OF SHT. 21
SHT. No. 02						

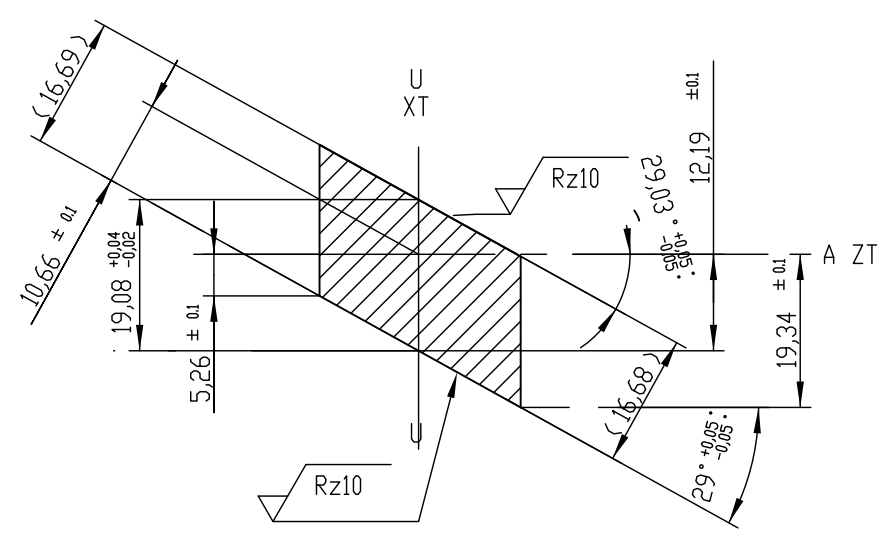
VIEW X



SECTION C-C



SECTION D-D



CENTRE DISTANCES IN SEMI-FINISHED CONDITION

