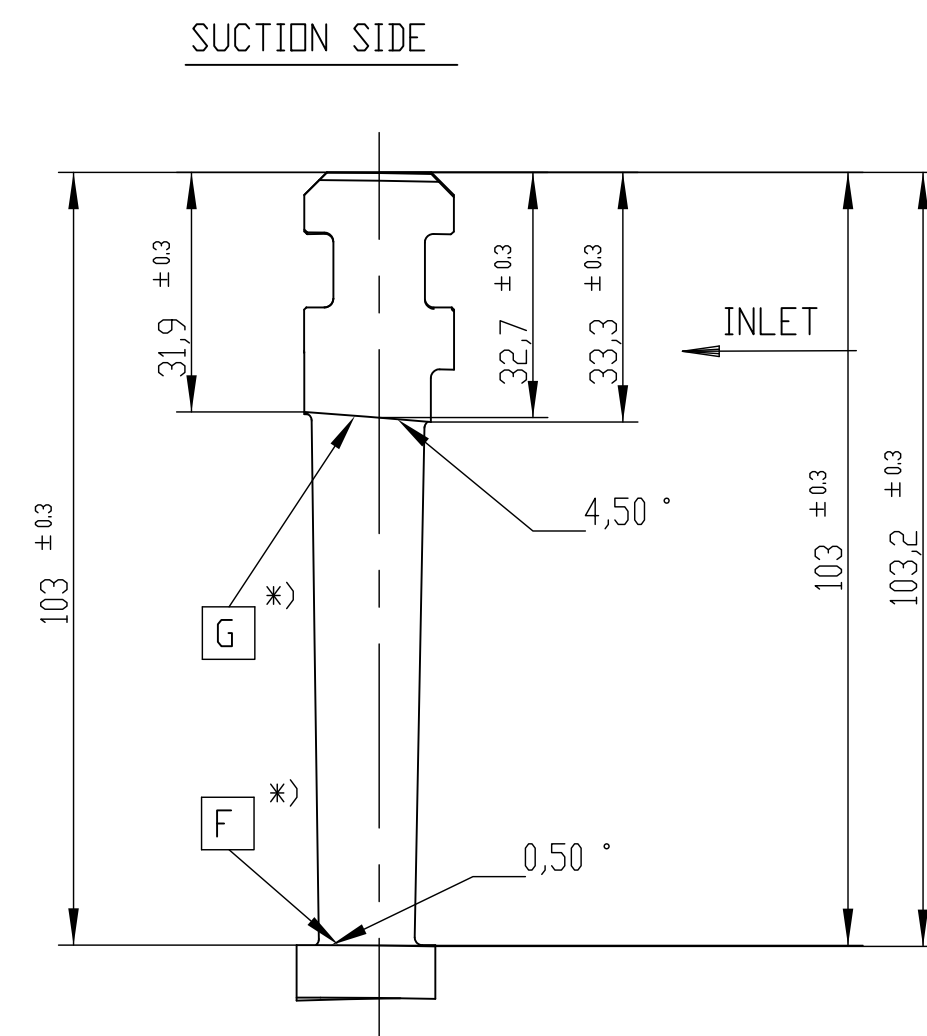


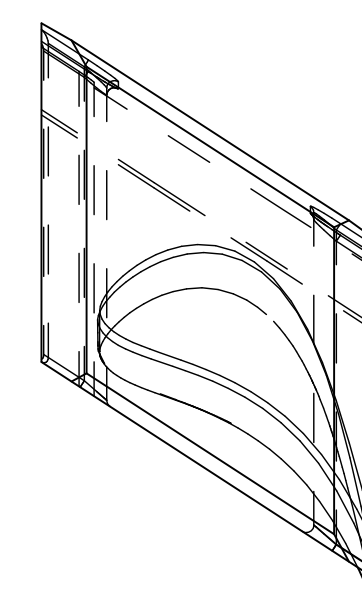
INVENTORY NO	SIGN. AND DATE	REF. DRG. NO.	COMPUTER FILE NAME
			T-1134

Printed by : P SHASHANK-FM2301 / 6115381 on 18-05-16 15:10:14

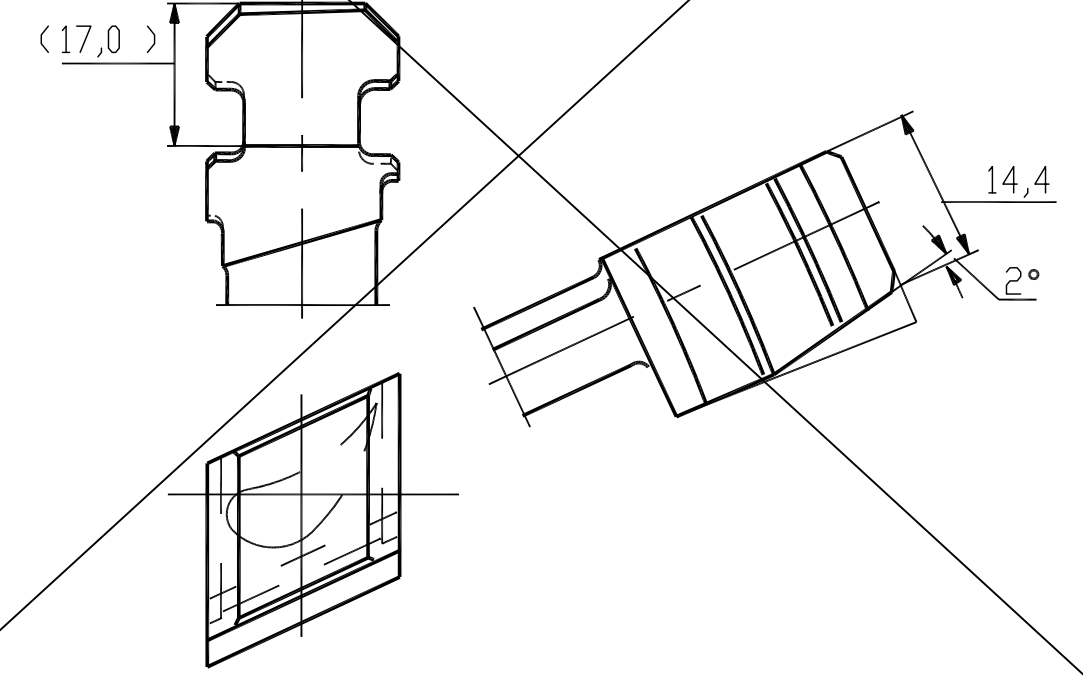
This Drawing is printed from Engineering Digital Archive System (EDAS).
Therefore signatures are not essentially required.



R
'RIGHT'



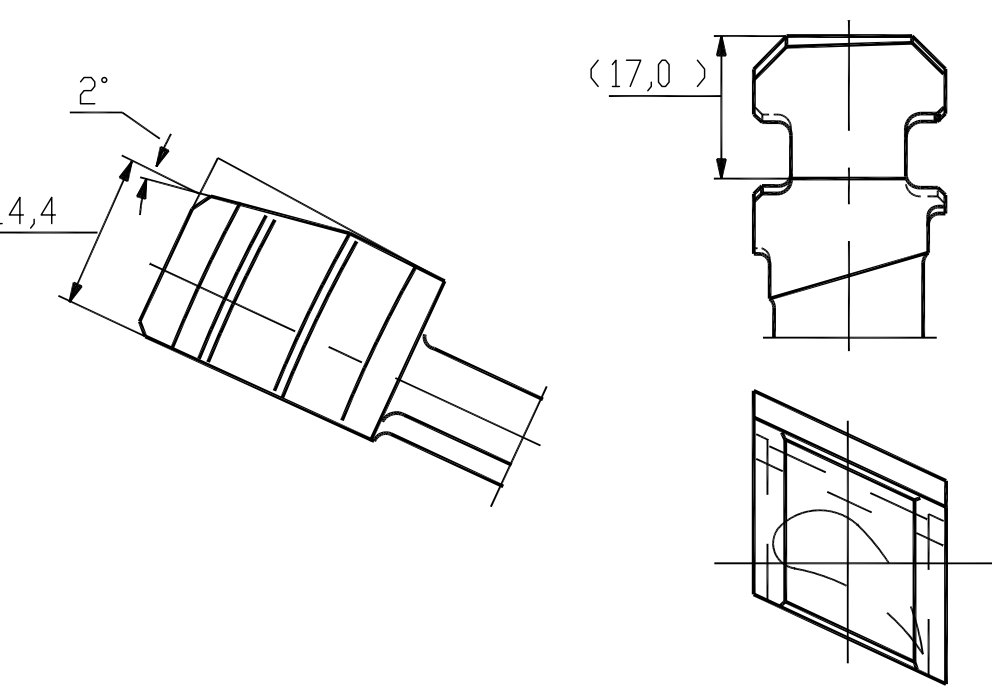
GUIDE BLADE AT JOINT PLANE (2 NO.)
MADE BY REWORKING ON GUIDE BLADE(LEFT)



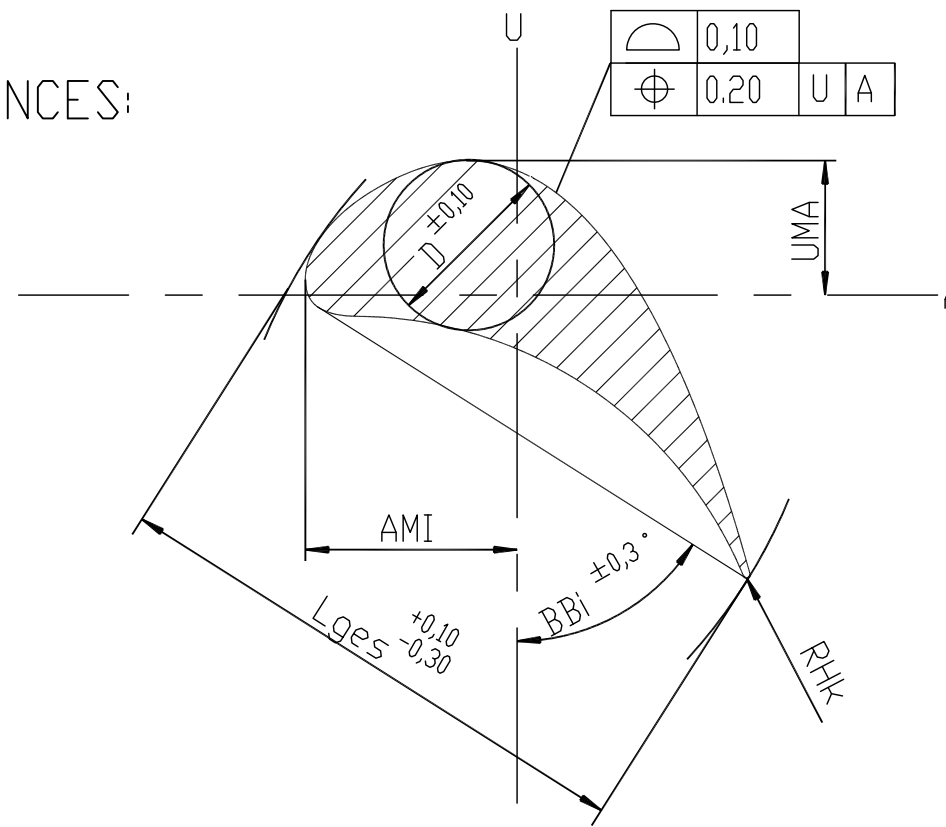
SECTION AX	Hx	Lge's	AMI	UMA	RHk	BBI	D
A1 - A1	-10.0	16.89	4.54	8.71	0.09	49.16	5.44
A2 - A2	0.0	17.43	4.73	3.40	0.09	48.87	5.62
A12-A12	10.0	17.98	4.93	1.11	0.10	48.59	5.79
A38-A38	36.0	19.40	5.43	2.25	0.10	47.86	6.25
A62-A62	60.0	20.71	5.88	3.43	0.11	47.18	6.67

LOCAL SMALLEST RADIUS OF CURVATURE ON PRESSURE SIDE: 11.1 MM

JOINT BLADE AT PARTING PLANE (2 NO.)
MADE BY REWORKING ON GUIDE BLADE(RIGHT)



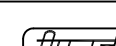
TECHNICAL REQUIREMENTS

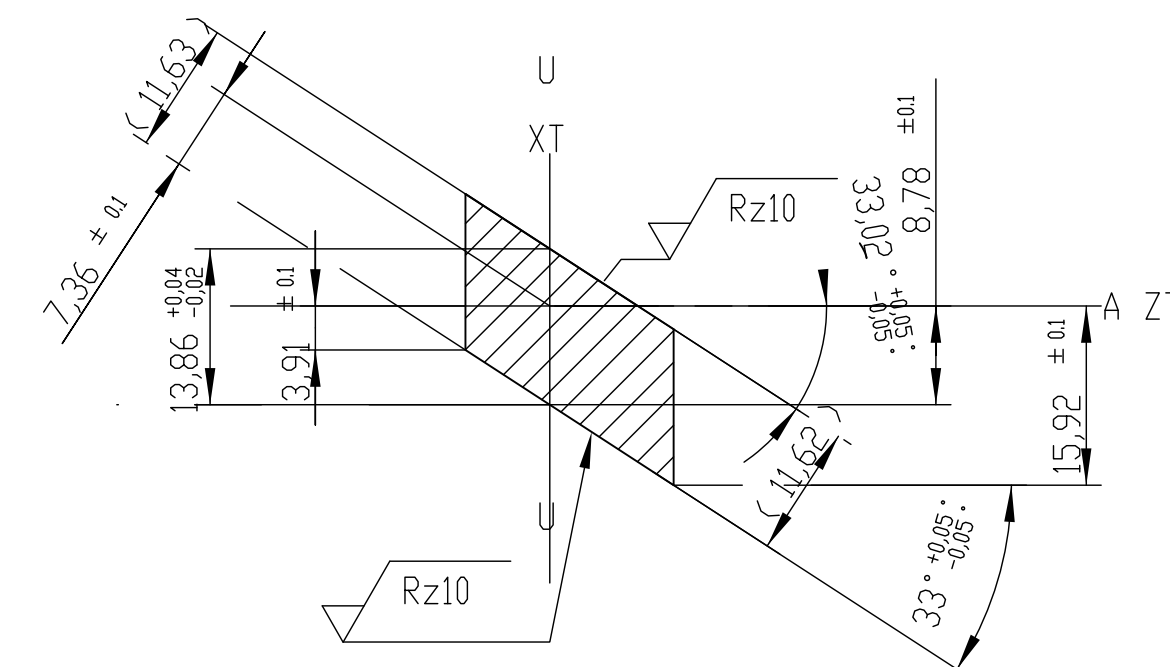
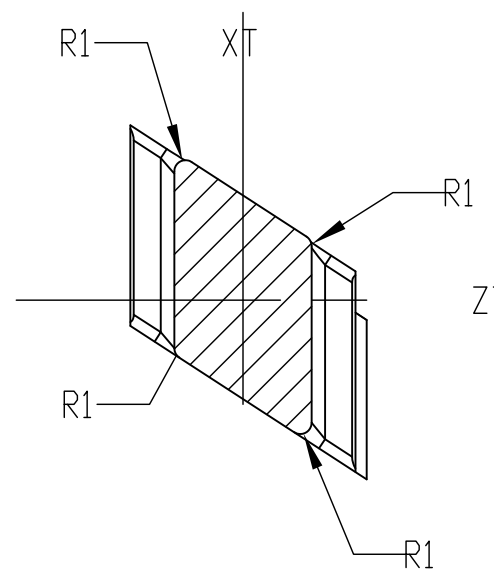


2. STRAK NUMBER: 80586
3. NUMBER OF BLADES/ROW: 142
(INCLUDING JOINT BLADES)

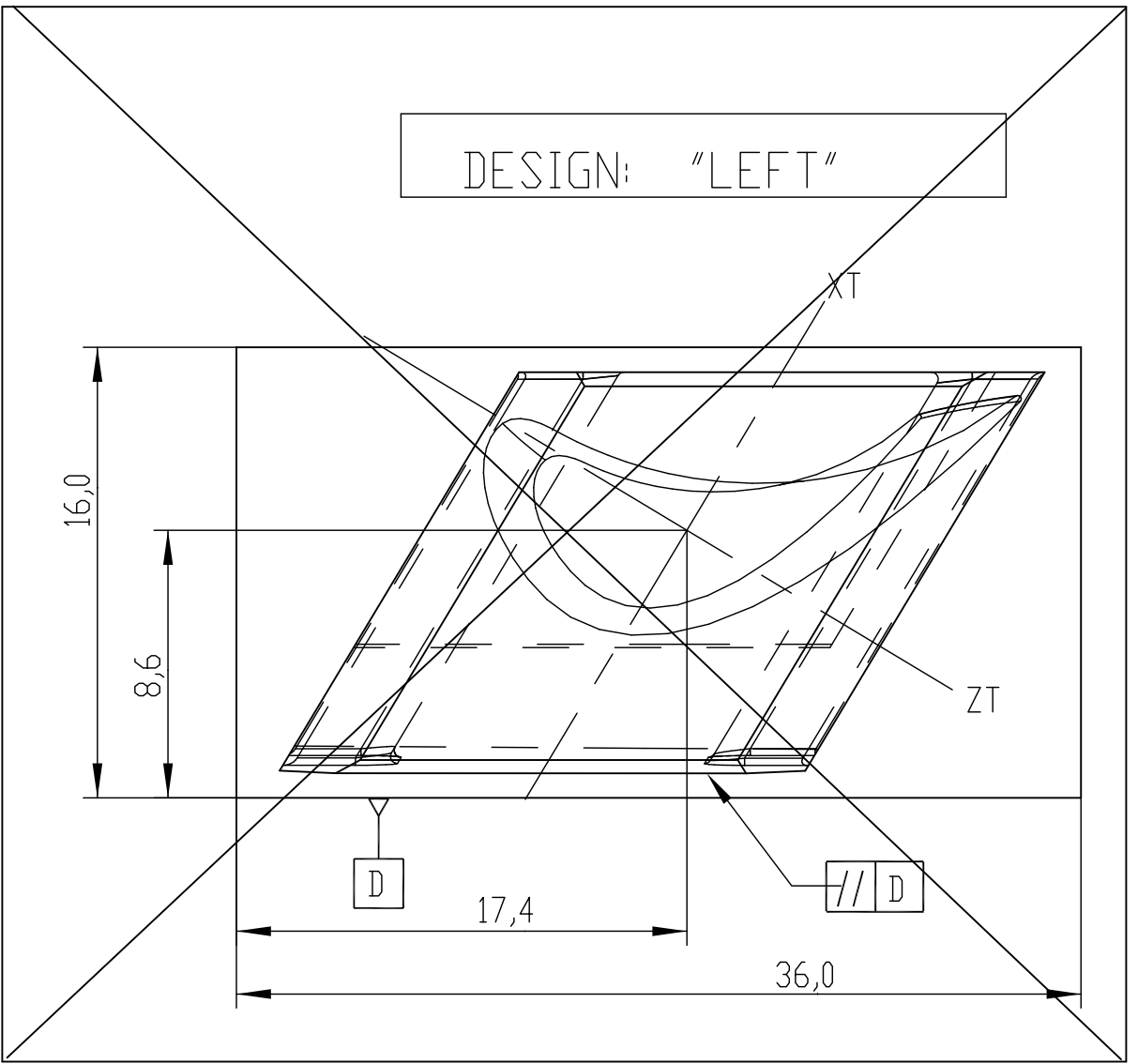
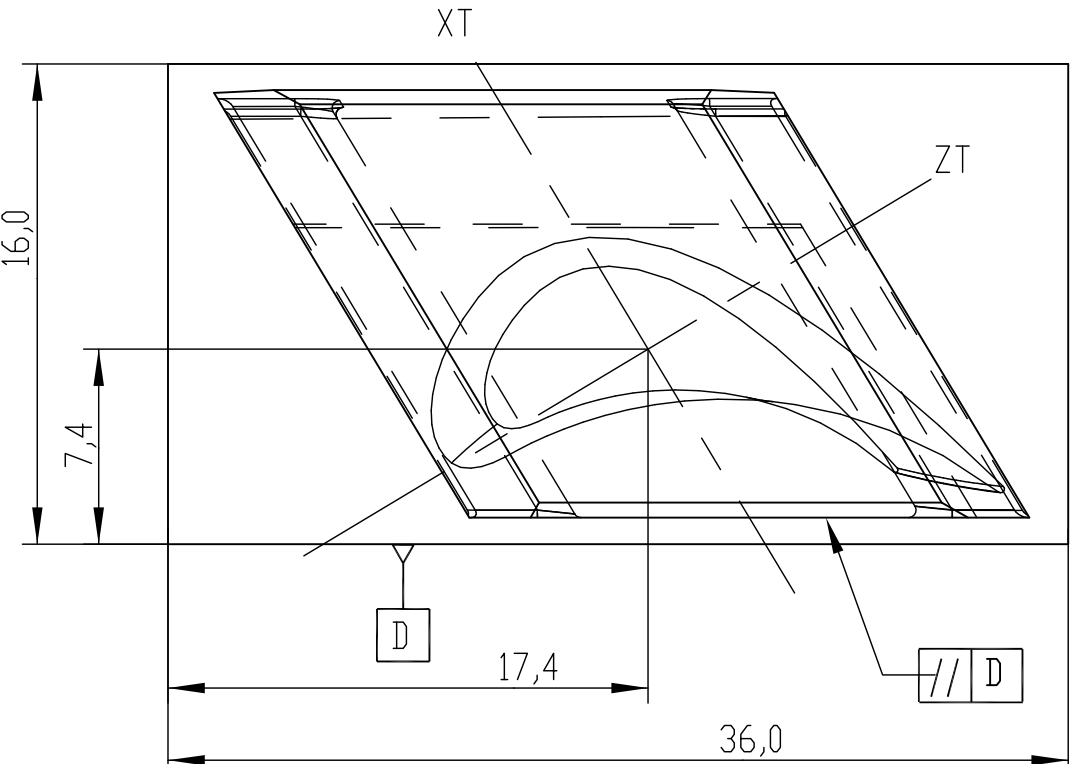
27(RIGHT)	27
ROW NO.	VAR

[illegible]

		BHARAT HEAVY ELECTRICALS LTD HYDERABAD		NAME A HEMASUNDARAM		DATE 05-08-2012	
DRN CHD APPD		K THIRUTHARAN S.P.RASHEED S.P.RASHEED		S.R.2012 S.R.2012 S.R.2012		NO -NA -NA	
DEPT. TLD 415		DIMS. C/M/F 415		SCALE NTS 0,120		WEIGHT (KGS) 0,120	
REF. TO ASSY. DR. -NA-		ITEM NO -NA-		NO -NA-		NO -NA-	
TITLE TYPE GUIDE BLADE - RIGHT S-135-S20-TR110/071A2S				CARD NO 0-015-18-62012 SHT. No 27 NO. OF SHT. 27			



DESIGN SUBJECTS



CENTRE DISTANCES IN SEMI-FINISHED CONDITION

[illegible]