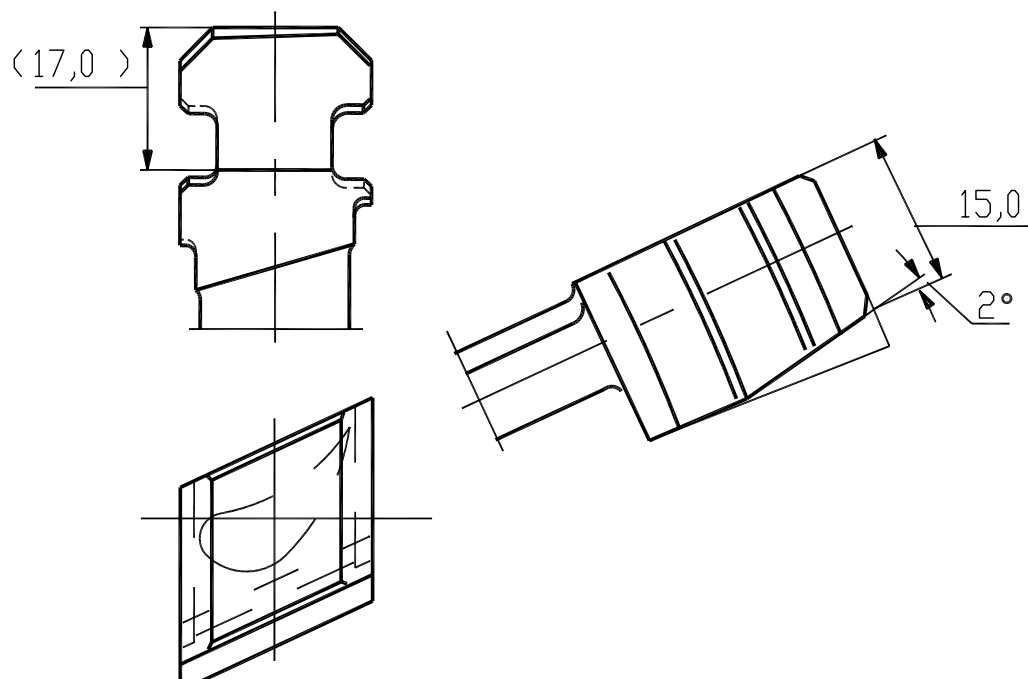


BLADE SHOWN IN DIRECTION OF STEAM FLOW

GUIDE BLADE AT JOINT PLANE (2 NO.)
MADE BY REWORKING ON GUIDE BLADE(LEFT)

POS.NO : 02

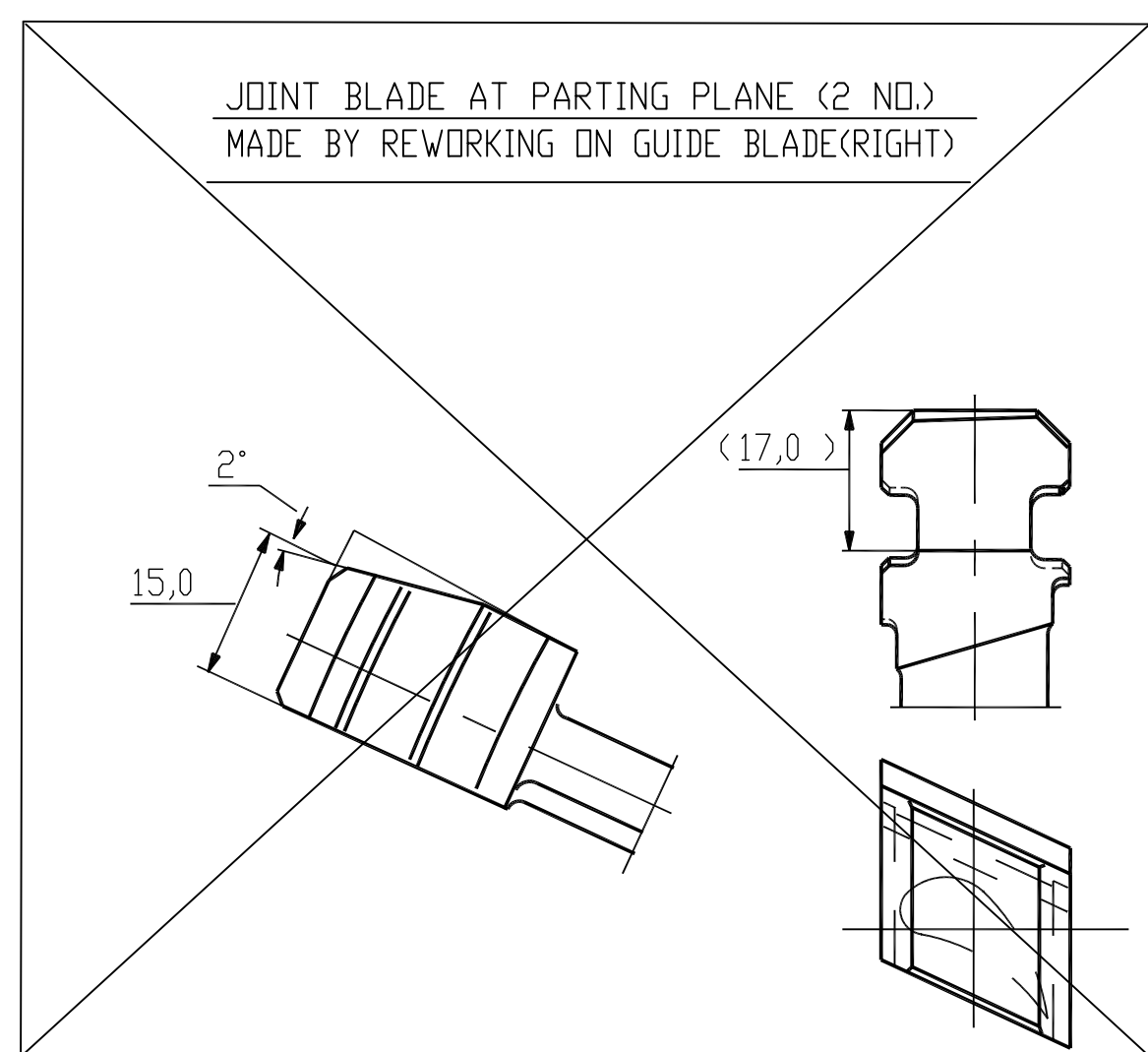
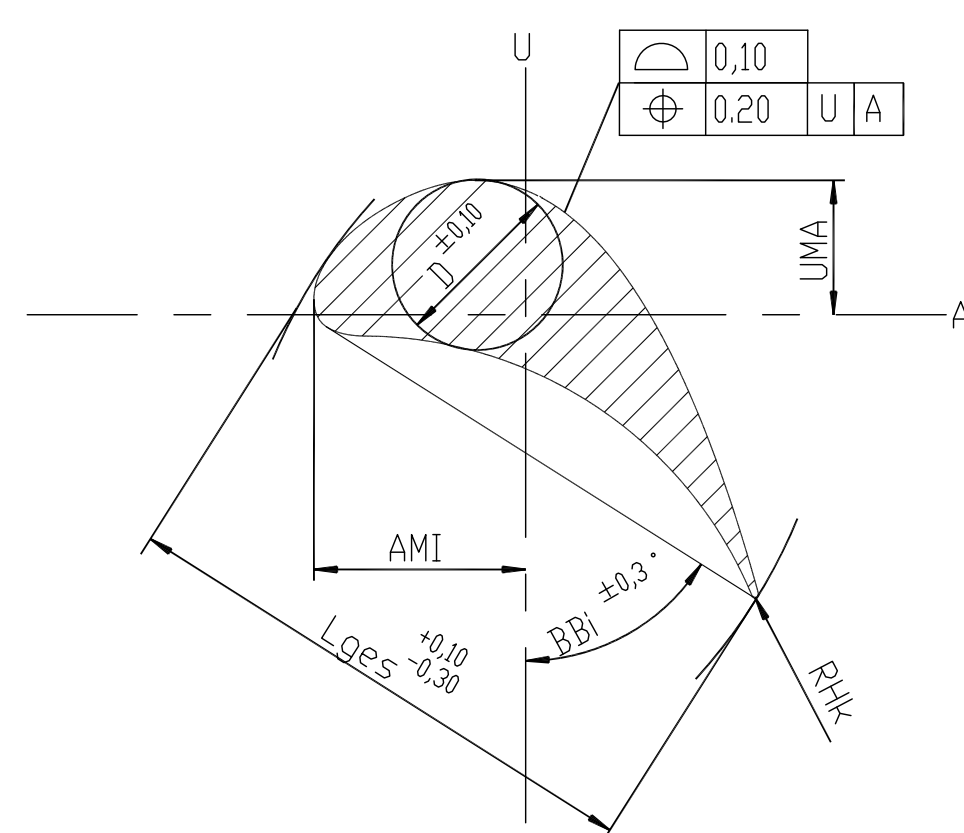


| SECTION | AX | Hx | Lges | AMI | UMA | RHk | BBI | D |
|---------|----|-------|-------|------|------|------|-------|------|
| A1 - A1 | | -10.0 | 16.04 | 5.34 | 8.72 | 0.09 | 54.56 | 5.17 |
| A2 - A2 | | 0.0 | 16.62 | 5.55 | 3.31 | 0.09 | 54.30 | 5.36 |
| A12-A12 | | 10.0 | 17.20 | 5.77 | 0.97 | 0.09 | 54.05 | 5.54 |
| A42-A42 | | 40.0 | 18.98 | 6.42 | 2.02 | 0.10 | 53.30 | 6.12 |
| A70-A70 | | 68.0 | 20.69 | 7.04 | 3.10 | 0.11 | 52.59 | 6.67 |

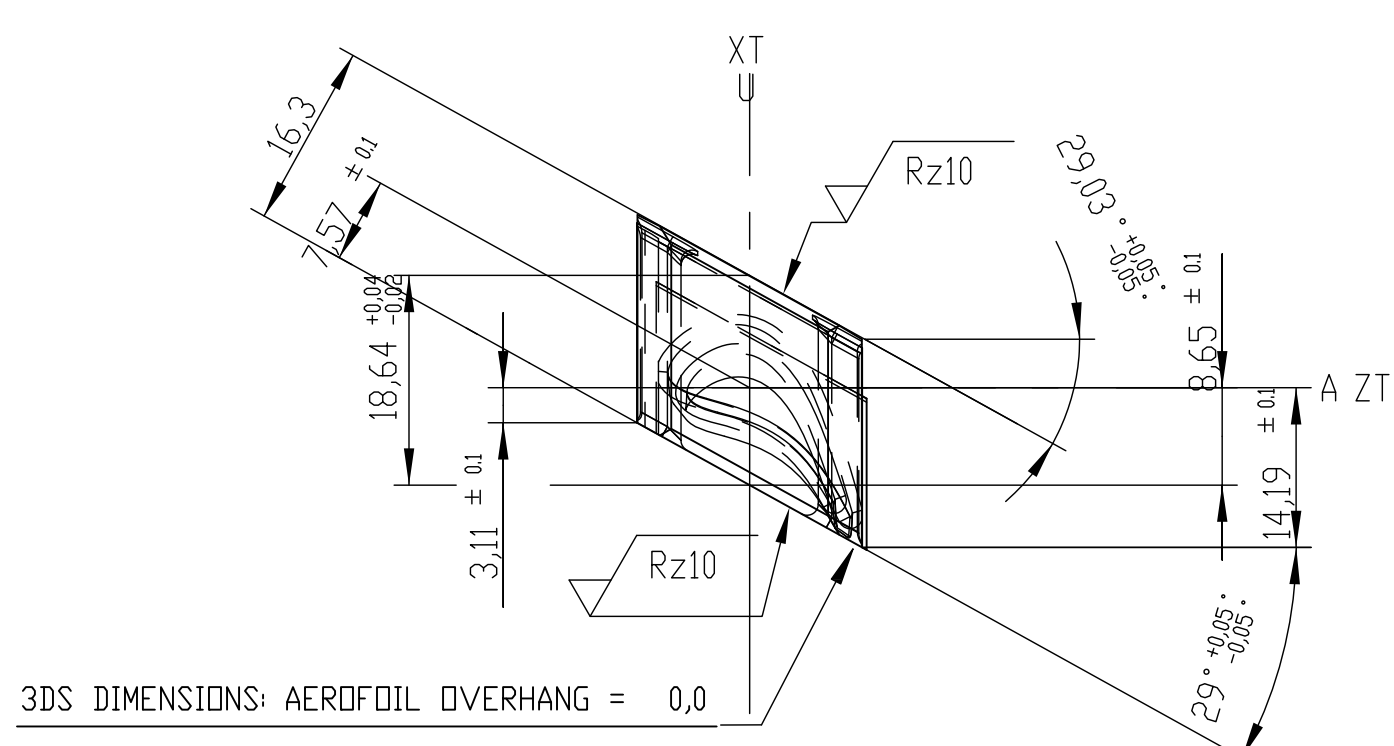
LOCAL SMALLEST RADIUS OF CURVATURE ON PRESSURE SIDE: 10.5 MM

TECHNICAL REQUIREMENTS

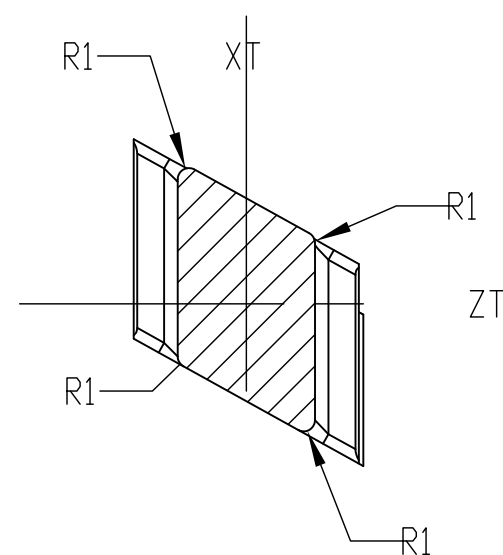
1. TOLERANCES



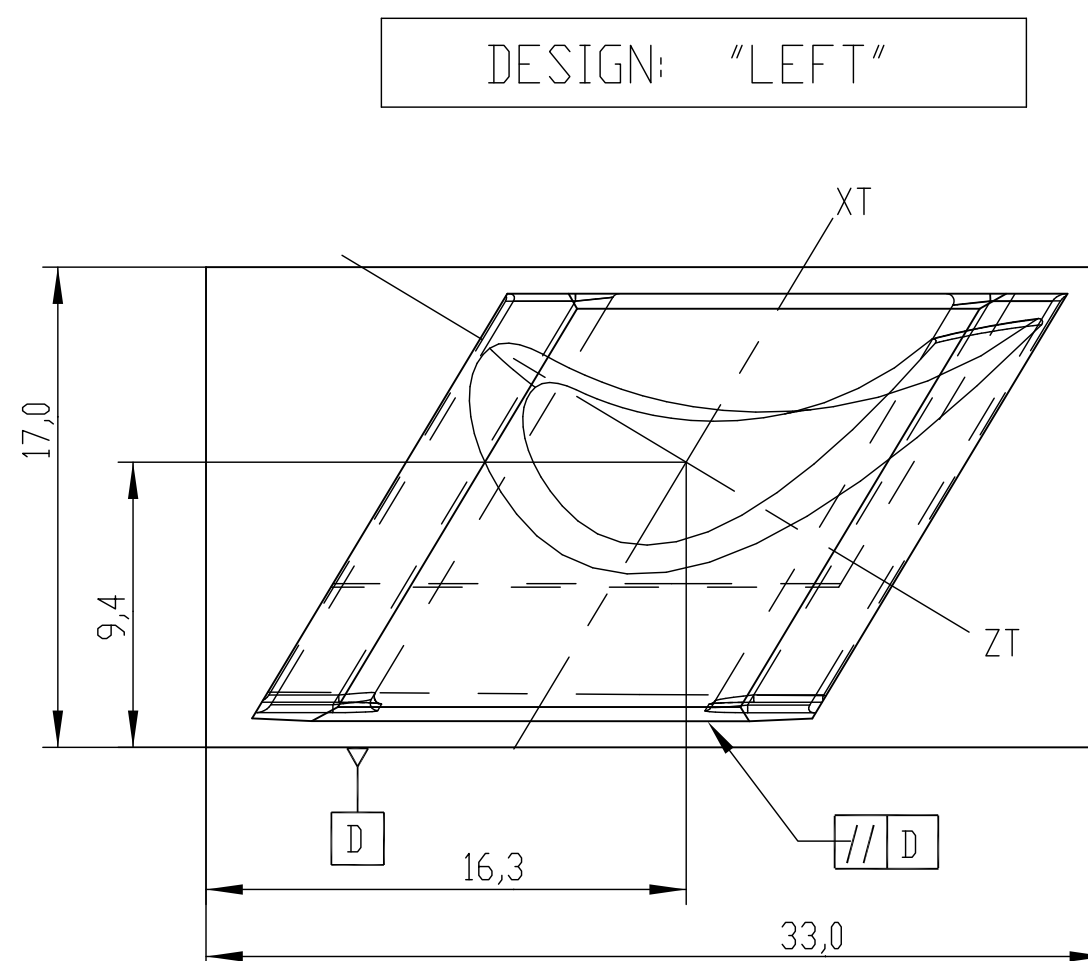
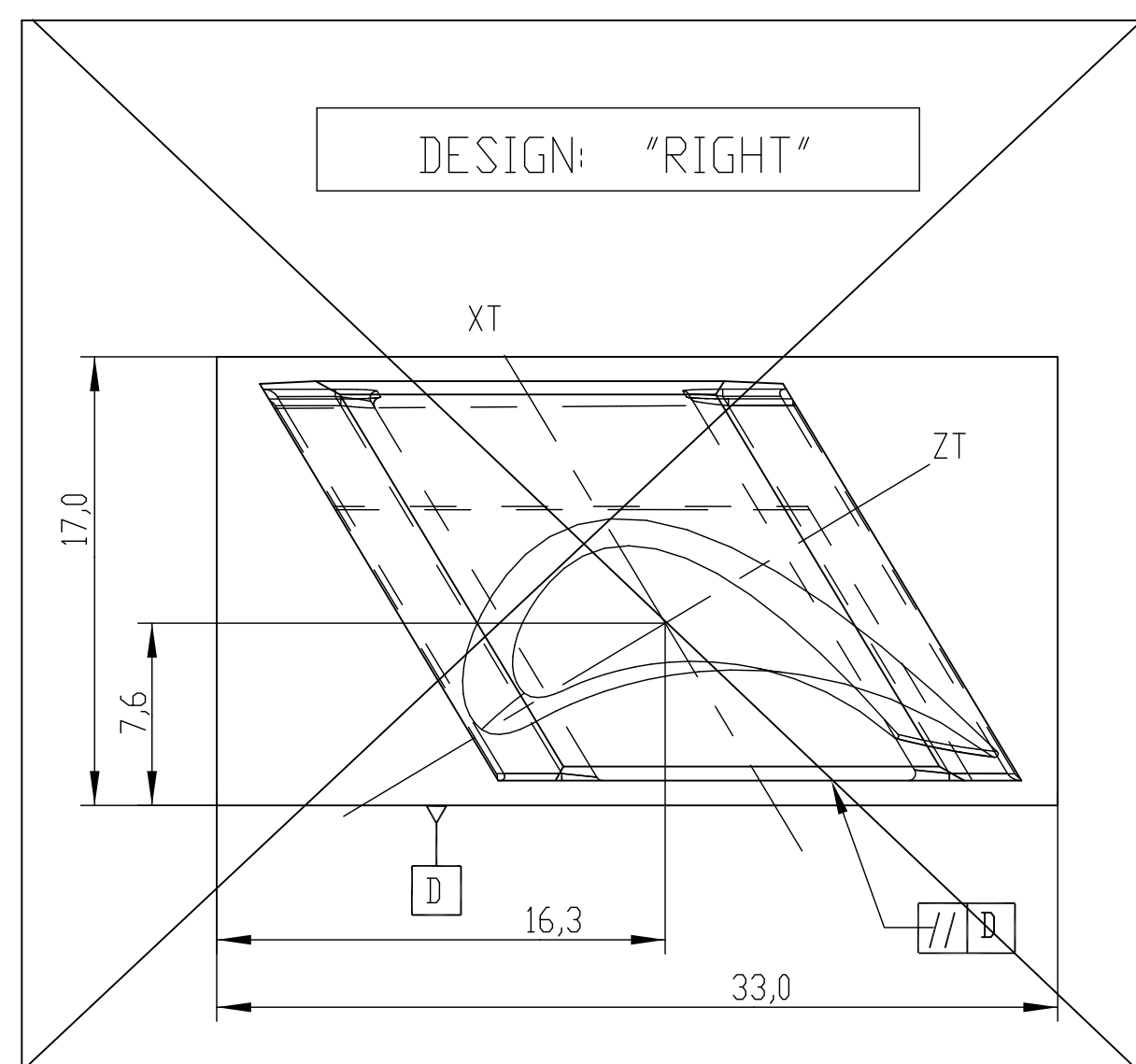
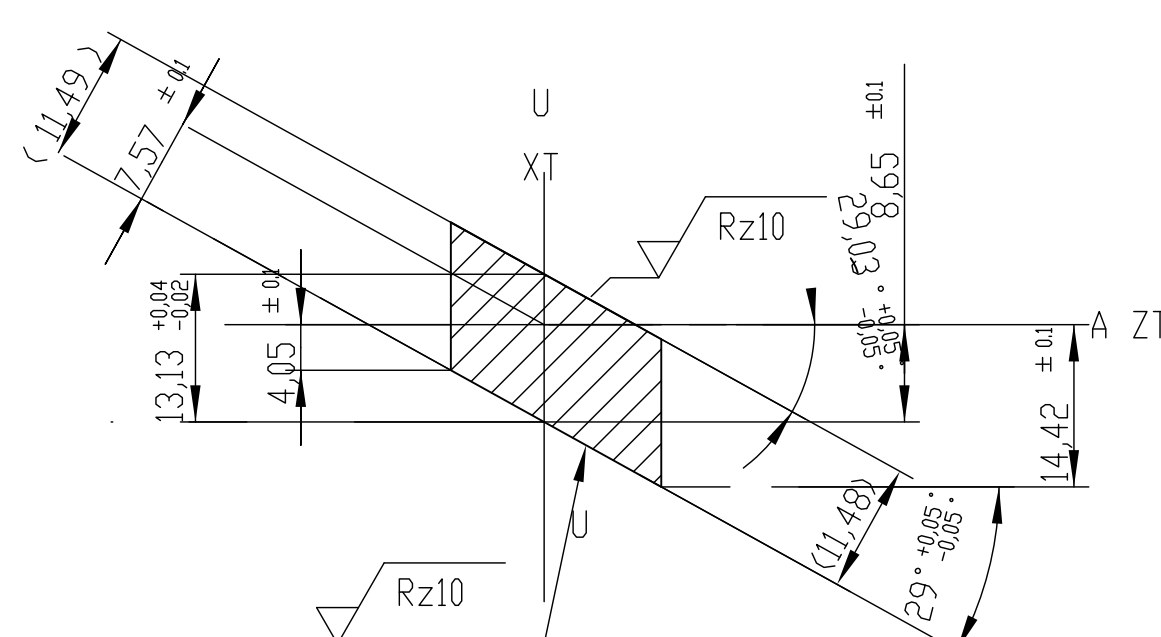
VIEW X



SECTION CO



SECTION DD



CENTRE DISTANCES IN SEMI-FINISHED CONDITION

2. STRAK NUMBER: 80697
3. NUMBER OF BLADES/ROW: 132
(INCLUDING JOINT BLADES)

| | |
|----------|-----|
| 07<LEFT> | 07 |
| ROW NO. | VAR |

| | |
|--|--|
| TYPE OF PRODUCT OR NAME OF CUSTOMER/PROJECT | |
|--|--|



BHARAT HEAVY ELECTRICALS LTD.
HYDERABAD



| | | | | | | | | |
|------------------------|--|--------------|-------|----------------|--------------------|----------------|----------|------------|
| DEPT. 11A | | UNTEL. DIMS. | SCALE | WEIGHT | APPD. | T.S. PRABHU | 22032016 | NO. OF |
| CODE | | GR. C/N/F | NTS | 0.130 | REF. TO ASSY. DRG. | -NA- | -NA- | ITEMS -NA- |
| TITLE | | | | DRAWING NO. | | REV | | |
| GUIDE BLADE - LEFT | | | | 0-301-75-00016 | | 00 | | |
| S-135-S20-TRI17/080C2S | | | | SHT. NO 07 | | NO. OF SHT. 41 | | |

This Drawing is printed from Engineering Digital Archive System (EDAS).
Therefore signatures are not essentially required