

INVENTORY NO	SIGN. AND DATE	REF. DRG. NO.	COMPUTER FILE NAME
			T-1161

This Drawing is printed from Engineering Digital Archive System (EDAS).
Therefore signatures are not essentially required.



SCHEME FOR D AND S DIMENSIONS

*) REFERED TO ADJACENT BLADE

3.2 ALL OVER EXCEPT
OTHERWISE STATED ($\frac{x}{\nabla} = \frac{\sqrt{Rz100}}{\sqrt{R_{max}160}} = \frac{12.5}{\nabla} \frac{\sqrt{Rz25}}{\sqrt{Rz10}} = \frac{0.4}{\nabla} \frac{1.6}{\nabla}$)

DESIGN: "LEFT"

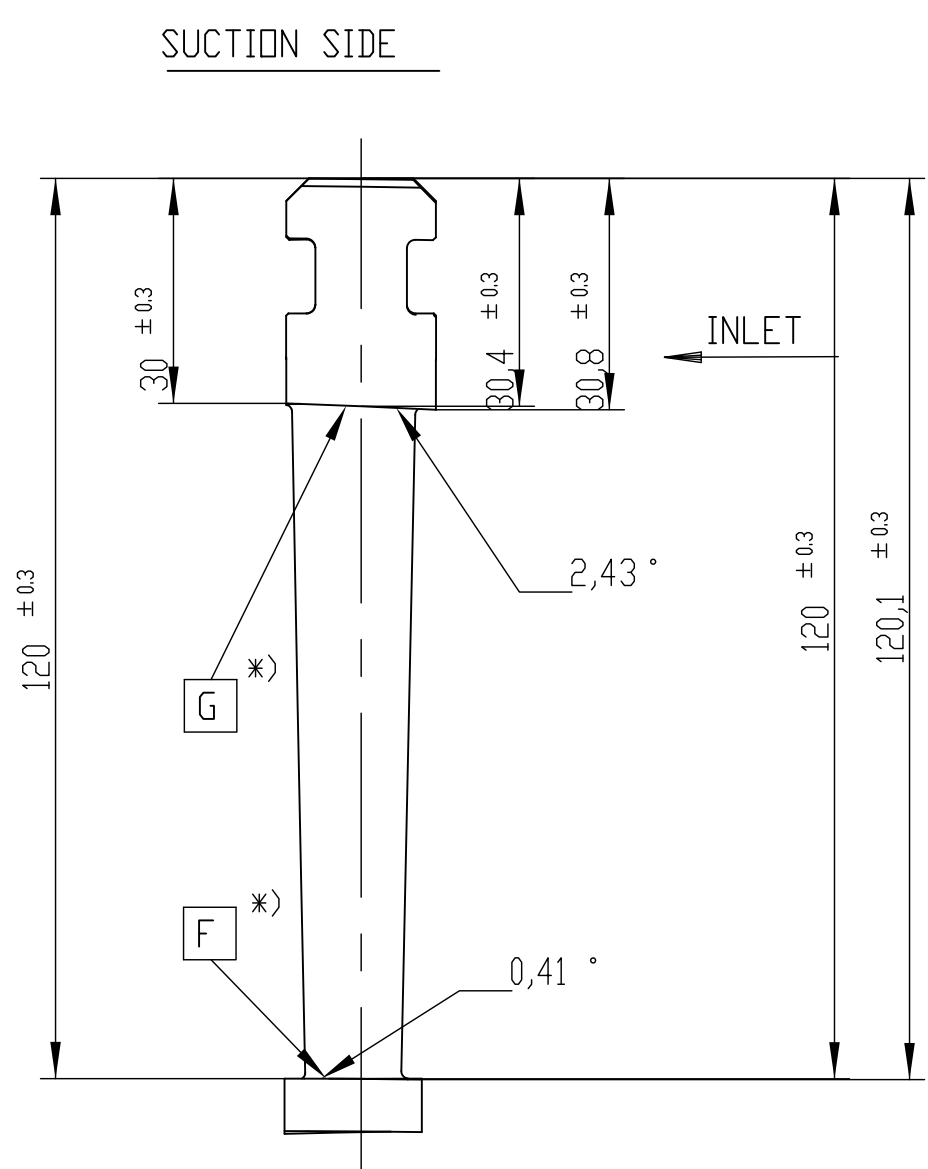
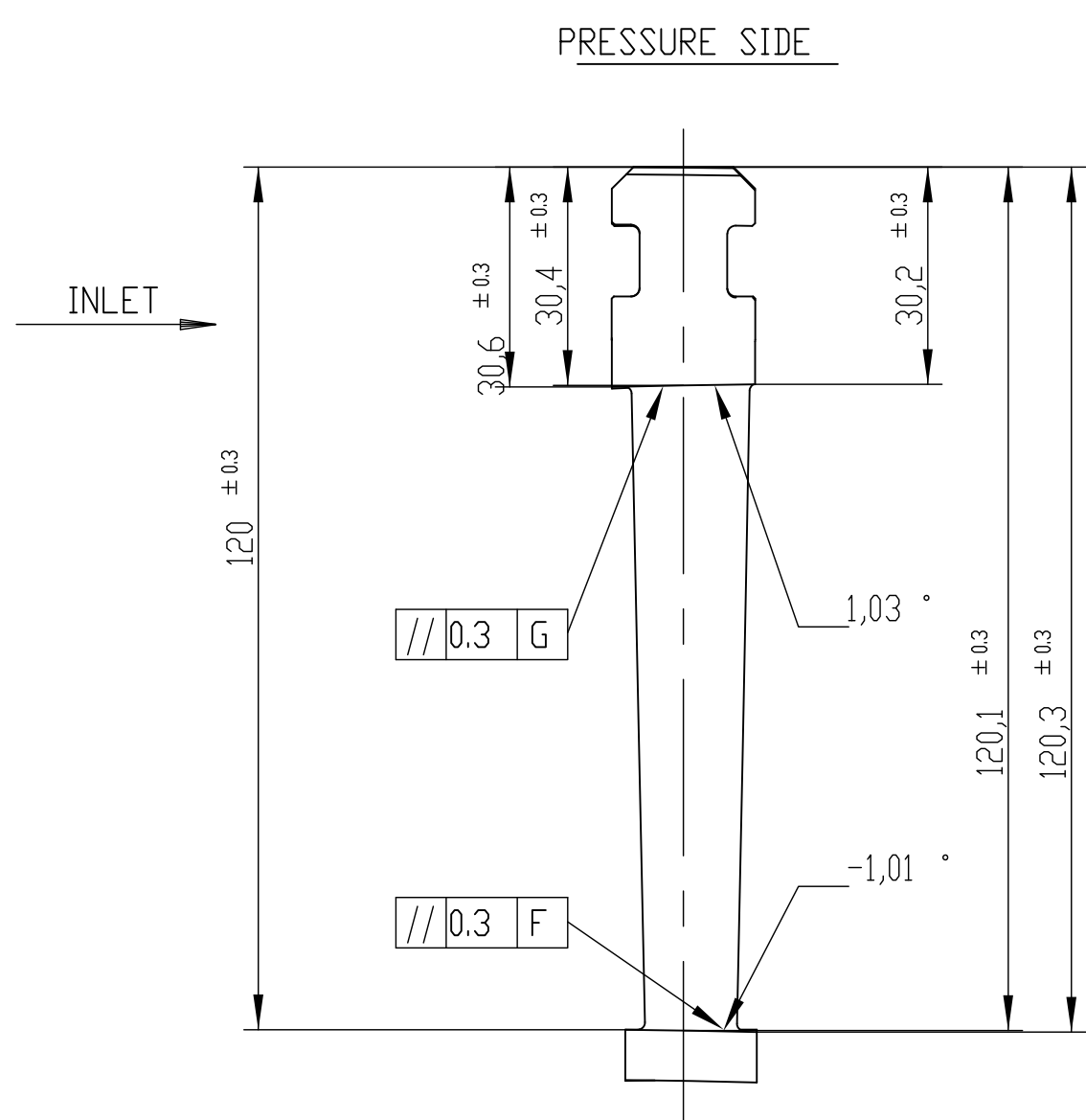
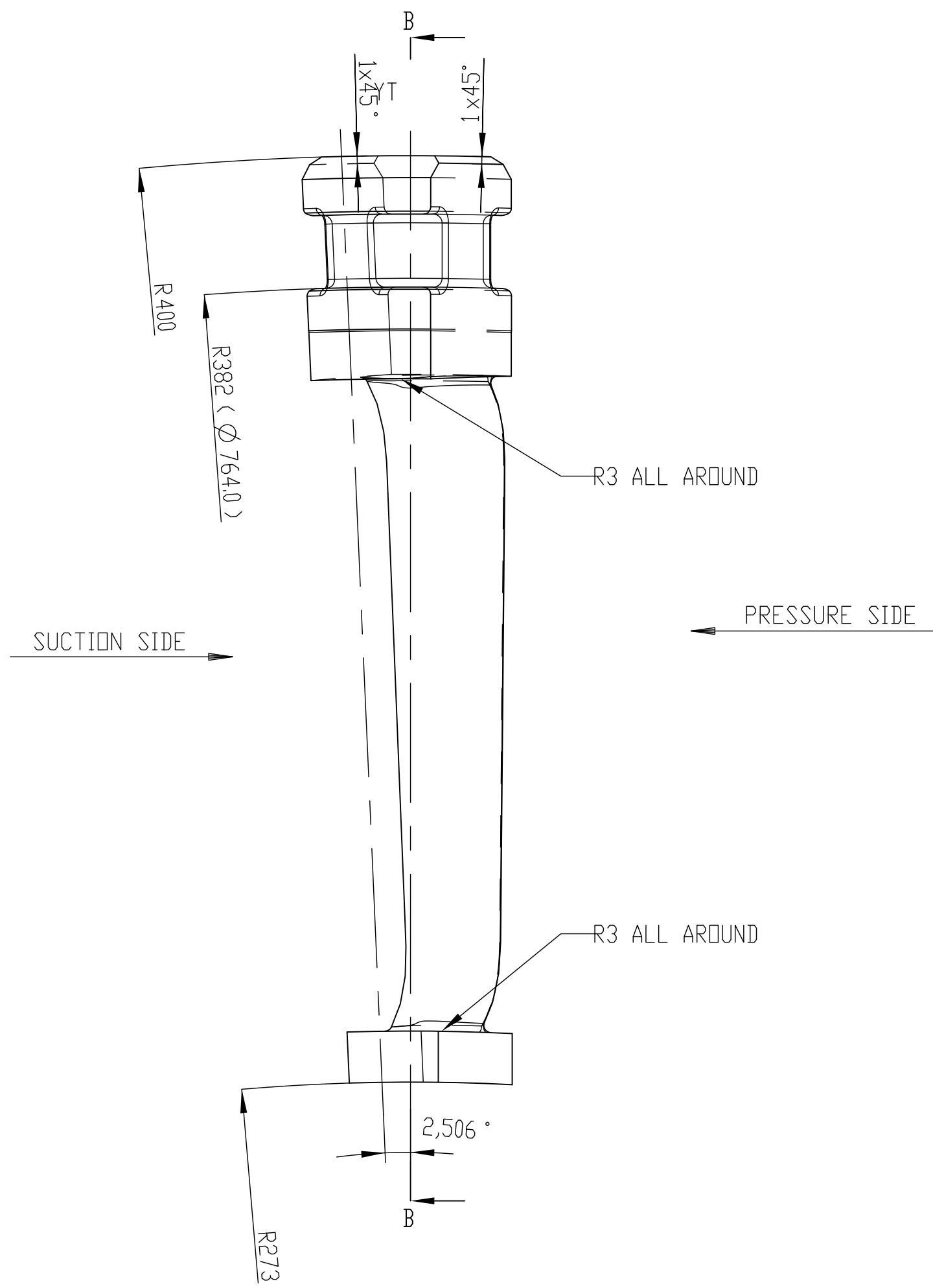
POS.NO: 01

L
'LEFT'
REVERSED IMAGE

DESIGN: "RIGHT"

R

'RIGHT'
AS DRAWN



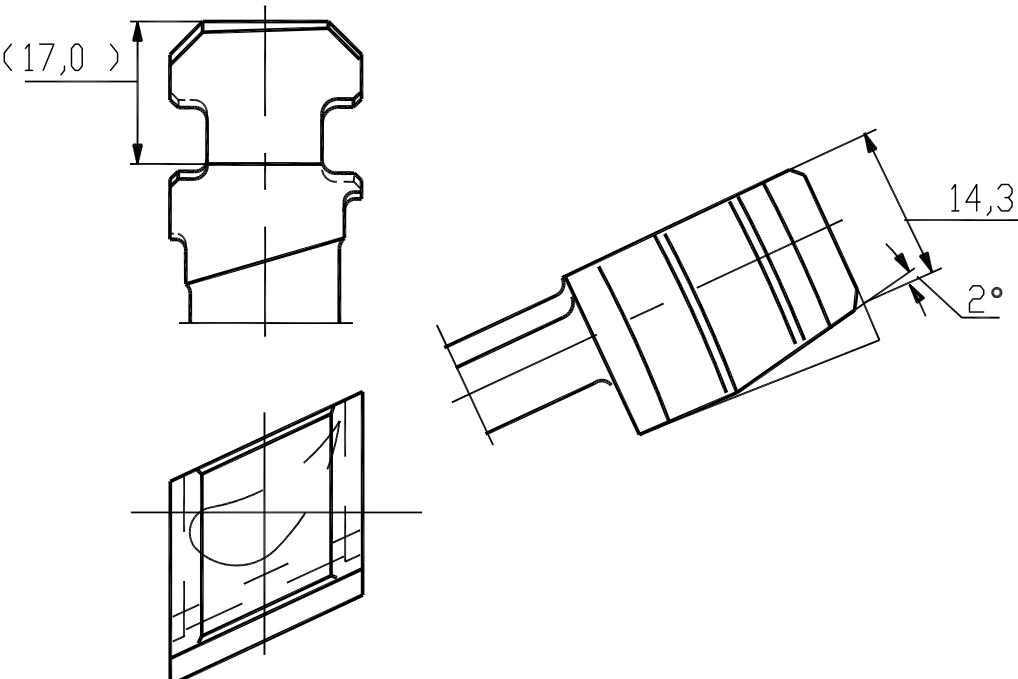
BLADE SHOWN IN DIRECTION OF STEAM FLOW

GUIDE BLADE AT JOINT PLANE (2 NO.)
MADE BY REWORKING ON GUIDE BLADE(LEFT)

POS.NO : 02

SECTION	AX	Hx	Lges	AMJ	UMA	Rhk	BBI	D
A1 - A1		10.0	15.40	5.11	0.25	0.08	55.28	4.96
A2 - A2		0.0	16.01	5.33	2.88	0.09	55.04	5.16
A6 - A6		12.0	16.72	5.60	0.63	0.09	54.78	5.39
A17-A17		45.0	18.66	6.31	1.95	0.10	54.04	6.01
A28-A28		78.0	20.53	7.00	3.27	0.11	53.31	6.62

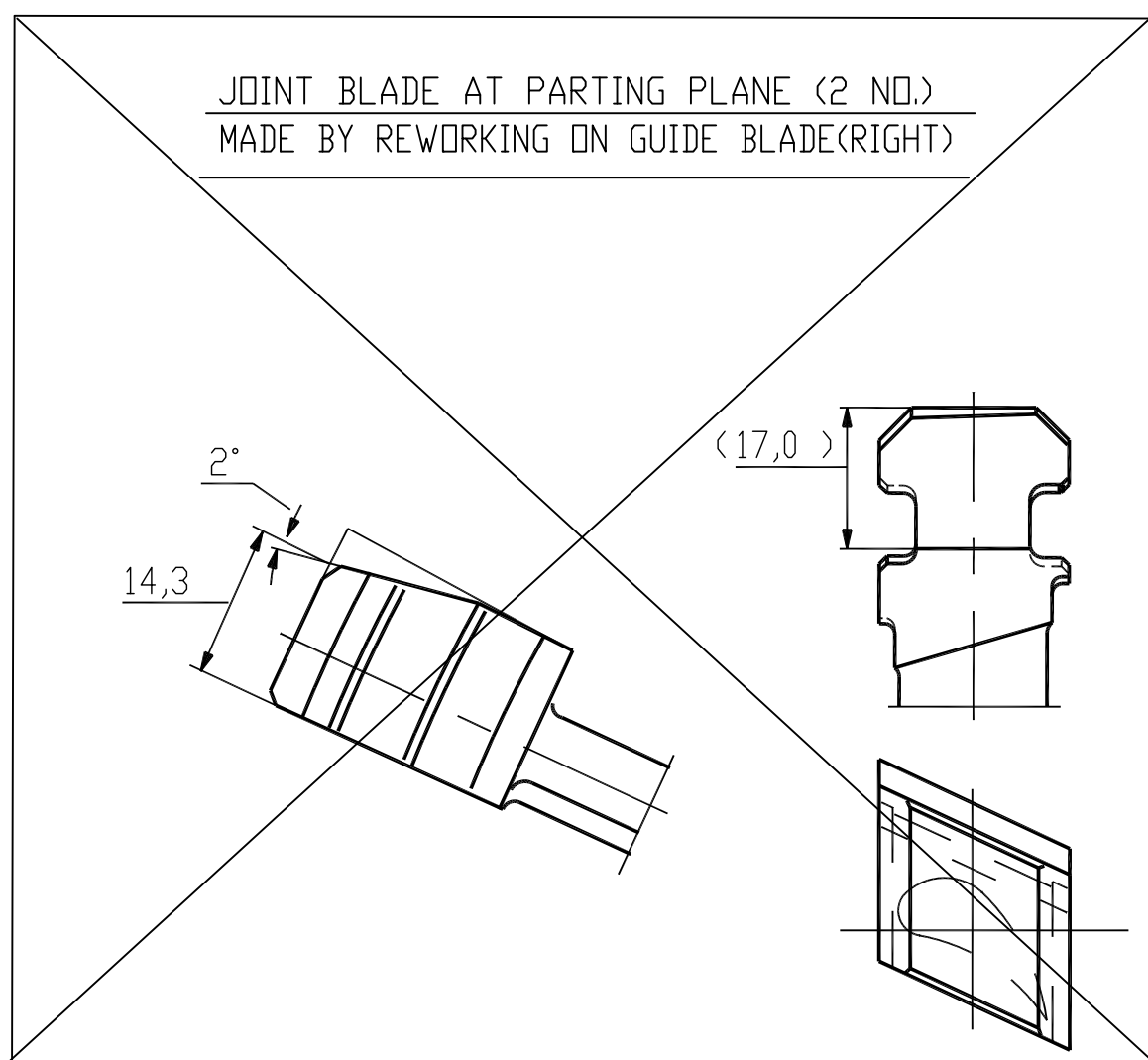
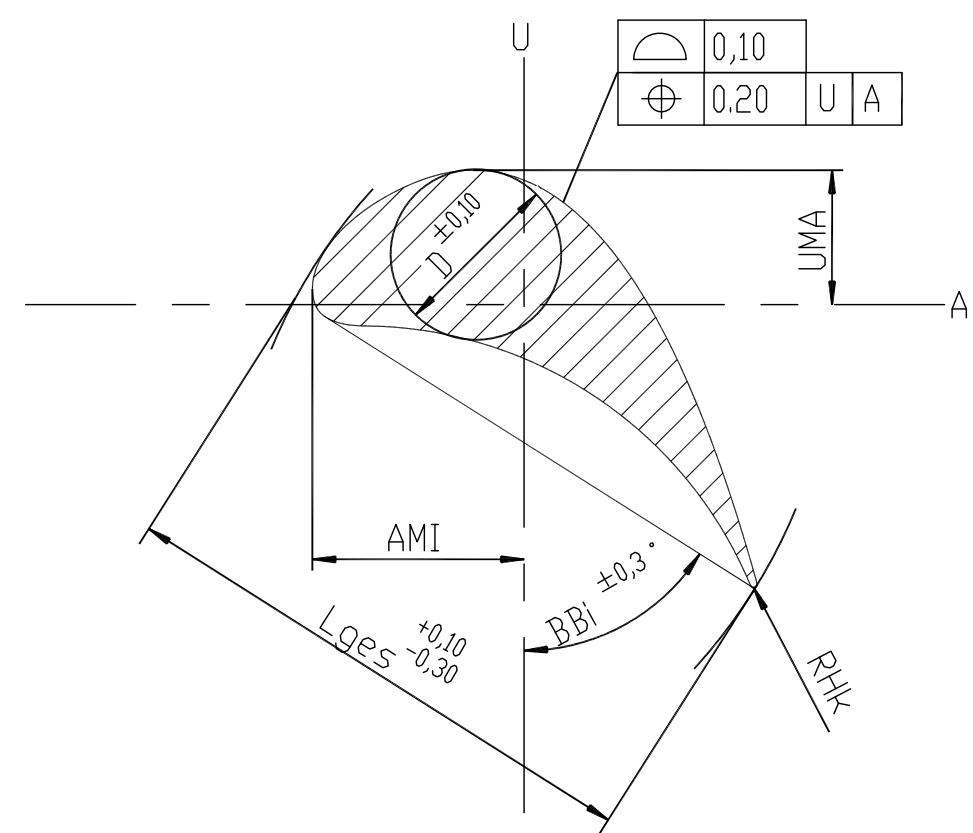
LOCAL SMALLEST RADIUS OF CURVATURE ON PRESSURE SIDE: 10.1 MM



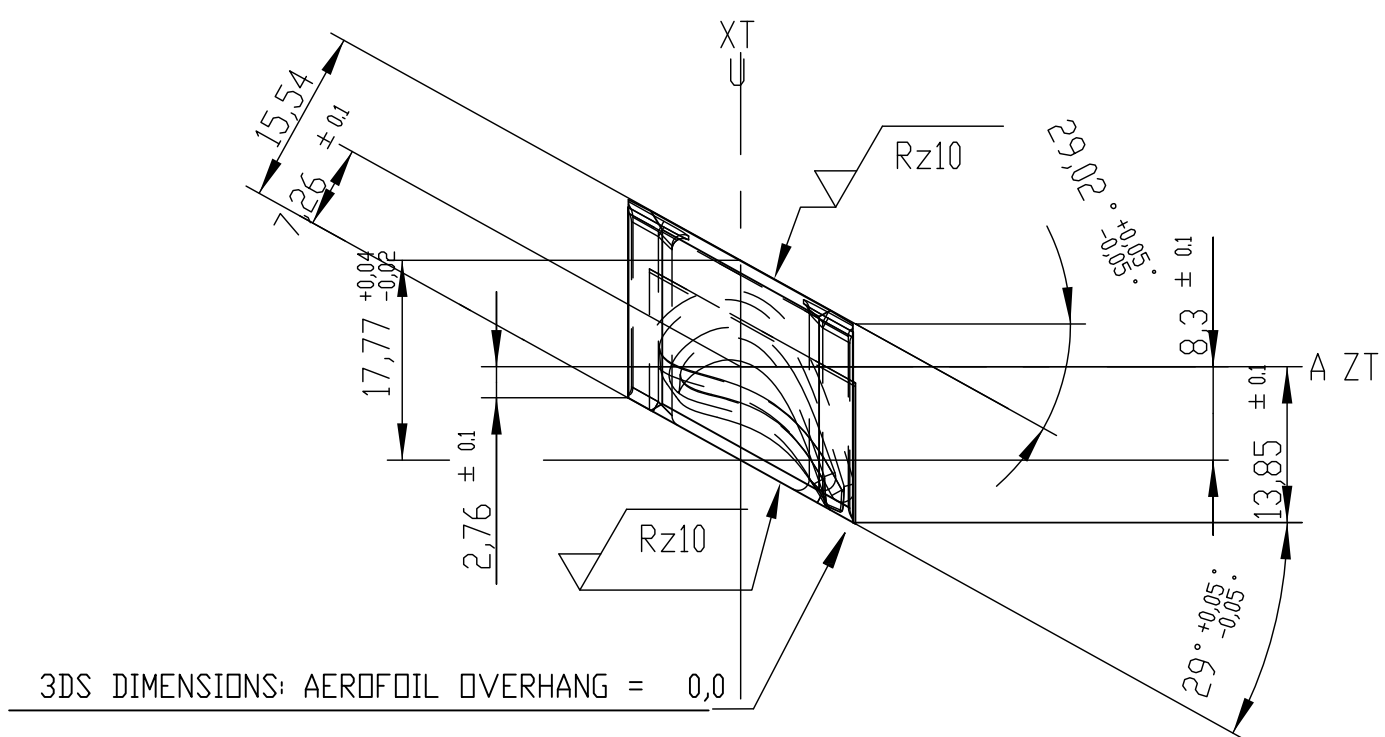
JOINT BLADE AT PARTING PLANE (2 NO.)
MADE BY REWORKING ON GUIDE BLADE(RIGHT

TECHNICAL REQUIREMENTS

1. TOLERANCES

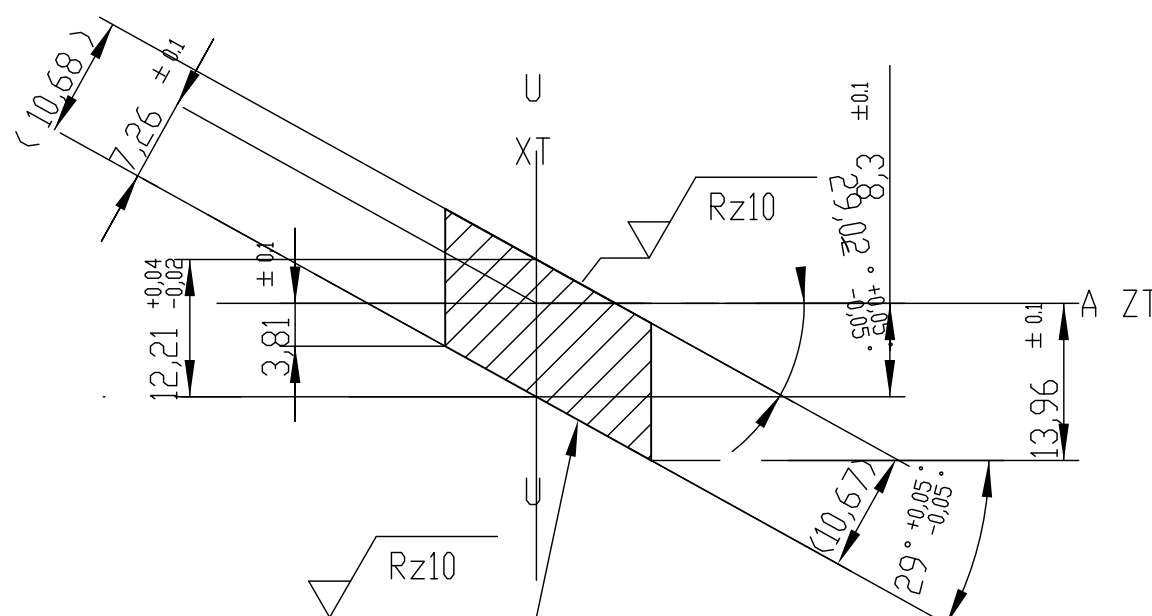
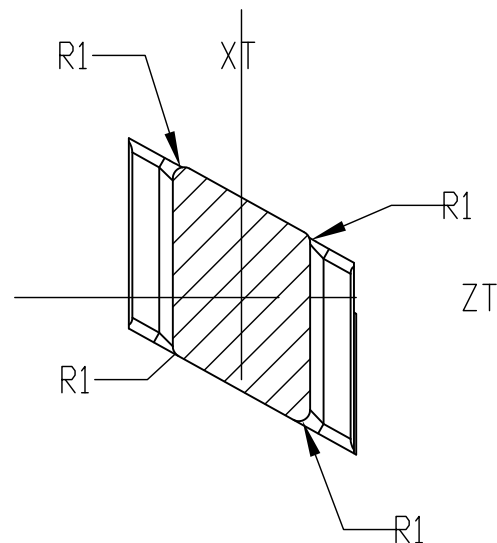
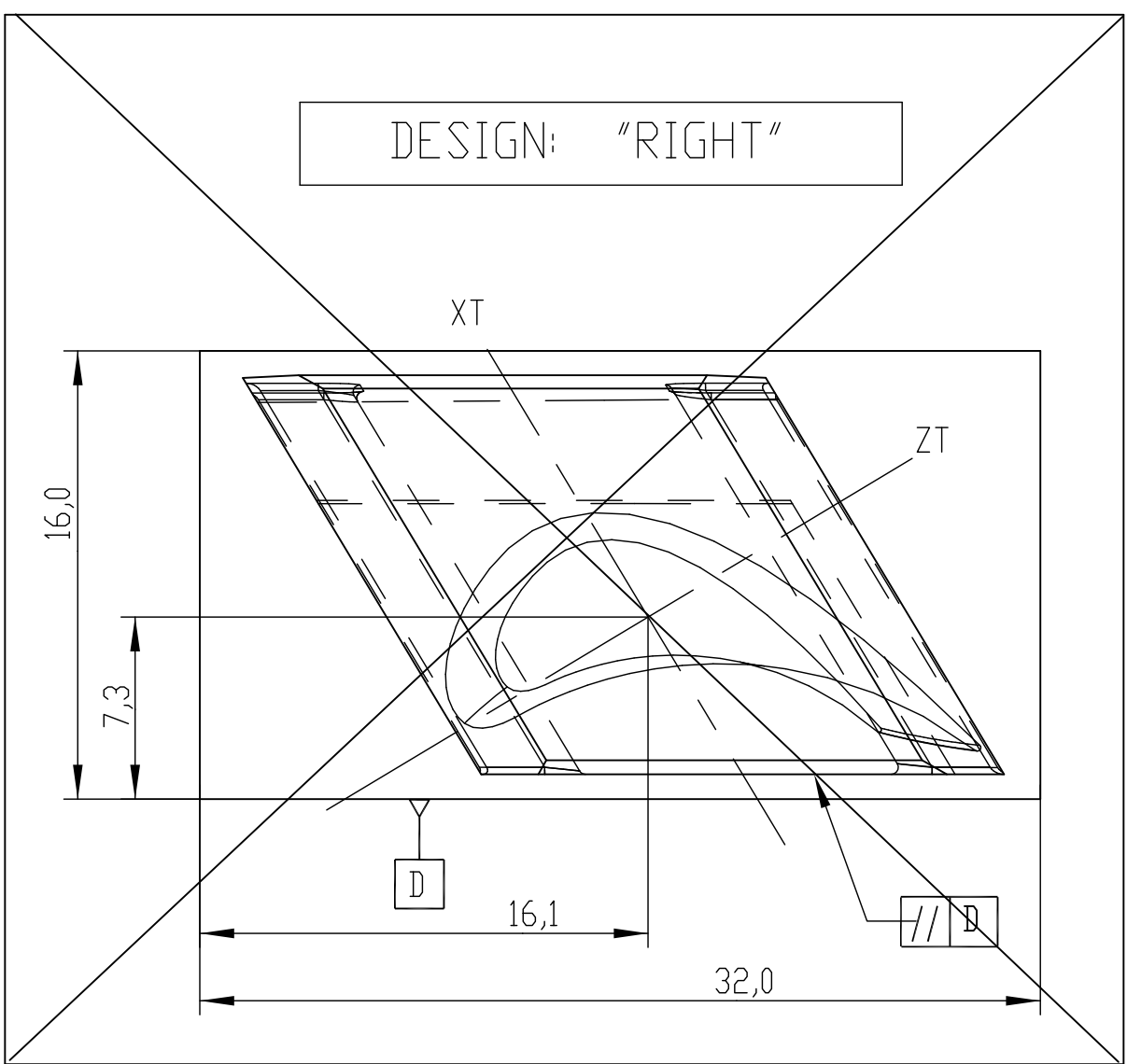


VIEW X

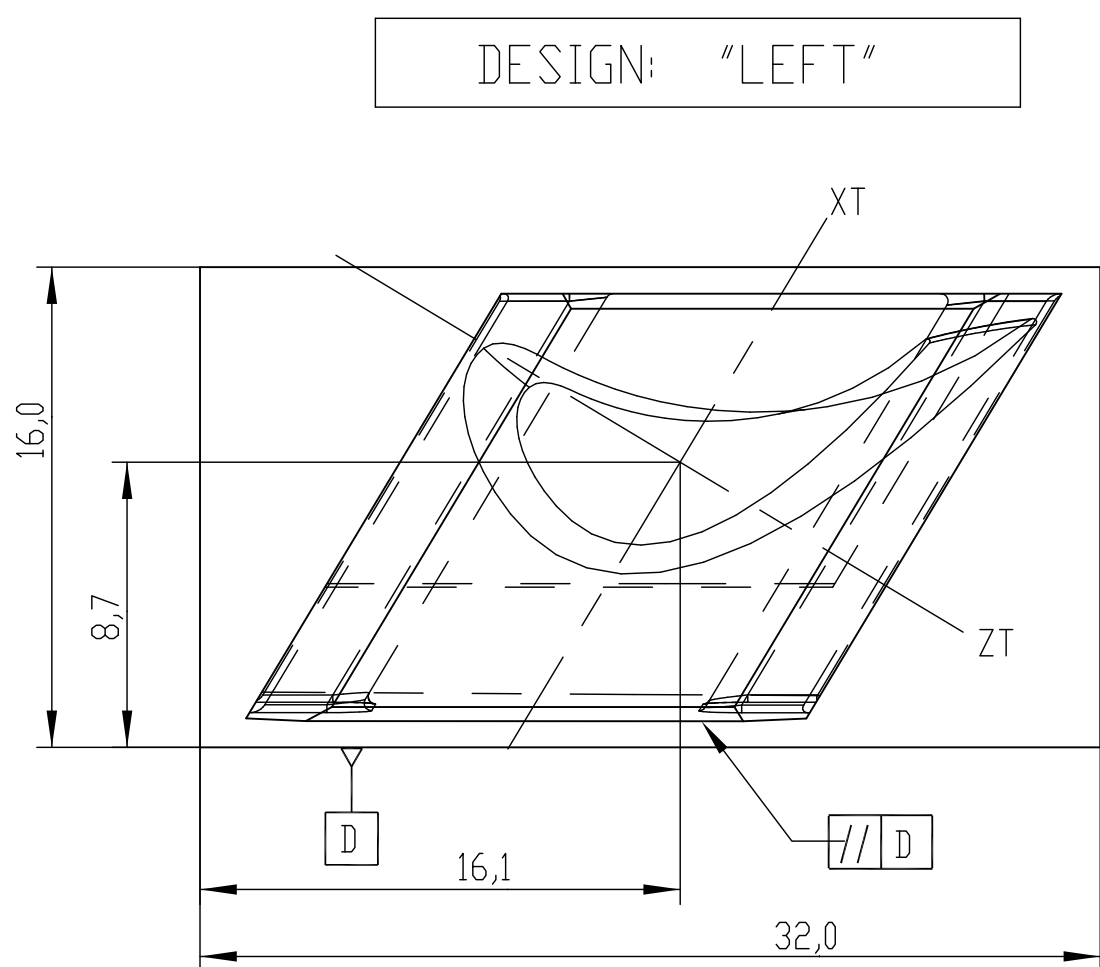


3DS DIMENSIONS: AEROFOIL OVERHANG = 0,0

SECTION DD

DESIGN: ^aRIGHT^a

DESIGN: "LEFT"



CENTRE DISTANCES IN SEMI-FINISHED CONDITION

2. STRAK NUMBER: 80700
3. NUMBER OF BLADES/ROW: (INCLUDING JOINT BLADES)

142

10 (LEFT)	10
ROW NO.	VAR

TYPE OF PRODUCT OR NAME OF CUSTOMER/PROJECT	
--	--



BHARAT HEAVY ELECTRICALS LTD.
HYDERABAD

DEPT.	UNTOL. DIMS.		SCALE	WEIGHT
1.T.D	GR.		NTS	0.12
CODE	C/M/E			

415	0101	44	RTS	0101
TITLE GUIDE BLADE - LEFT				

S-135-S20-TR127/090C2S

	15
--	----

This Drawing is printed from Engineering

CARD CODE	DRAWING NO. 0-301-75-00016	REV 00
-----------	-------------------------------	-----------

SHT. No 10	NO. OF SHT. 41
16	

ing Digital Archive System (EDAS)