

THE INFORMATION ON THIS DOCUMENT IS THE PROPERTY OF BHARAT HEAVY ELECTRICALS LIMITED. IT MUST NOT BE USED DIRECTLY OR INDIRECTLY IN ANY WAY DETRIMENTAL TO THE INTEREST OF THE COMPANY

S-105-S32-TR201/452CM

GENERAL DIMENSIONAL LIMITS, FITS & TOLERANCES AS PER HY0230261

INVENTORY NO. _____

SIGN. AND DATE _____

REF. ENG. NO. _____

COMP. DATE _____

FILE NAME _____

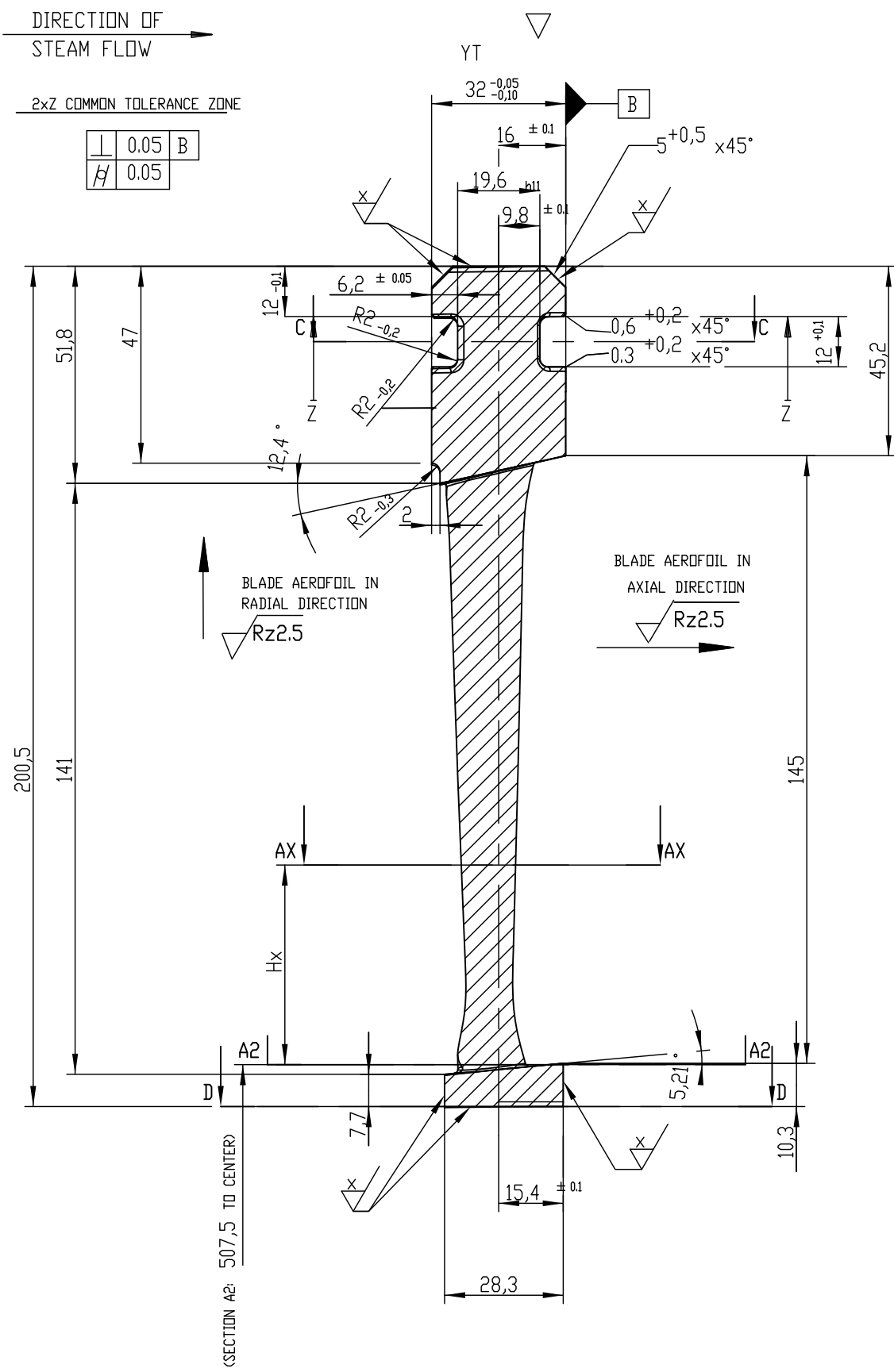
T-104

FIRST ANGLE PROJECTION

11029-81-501-0

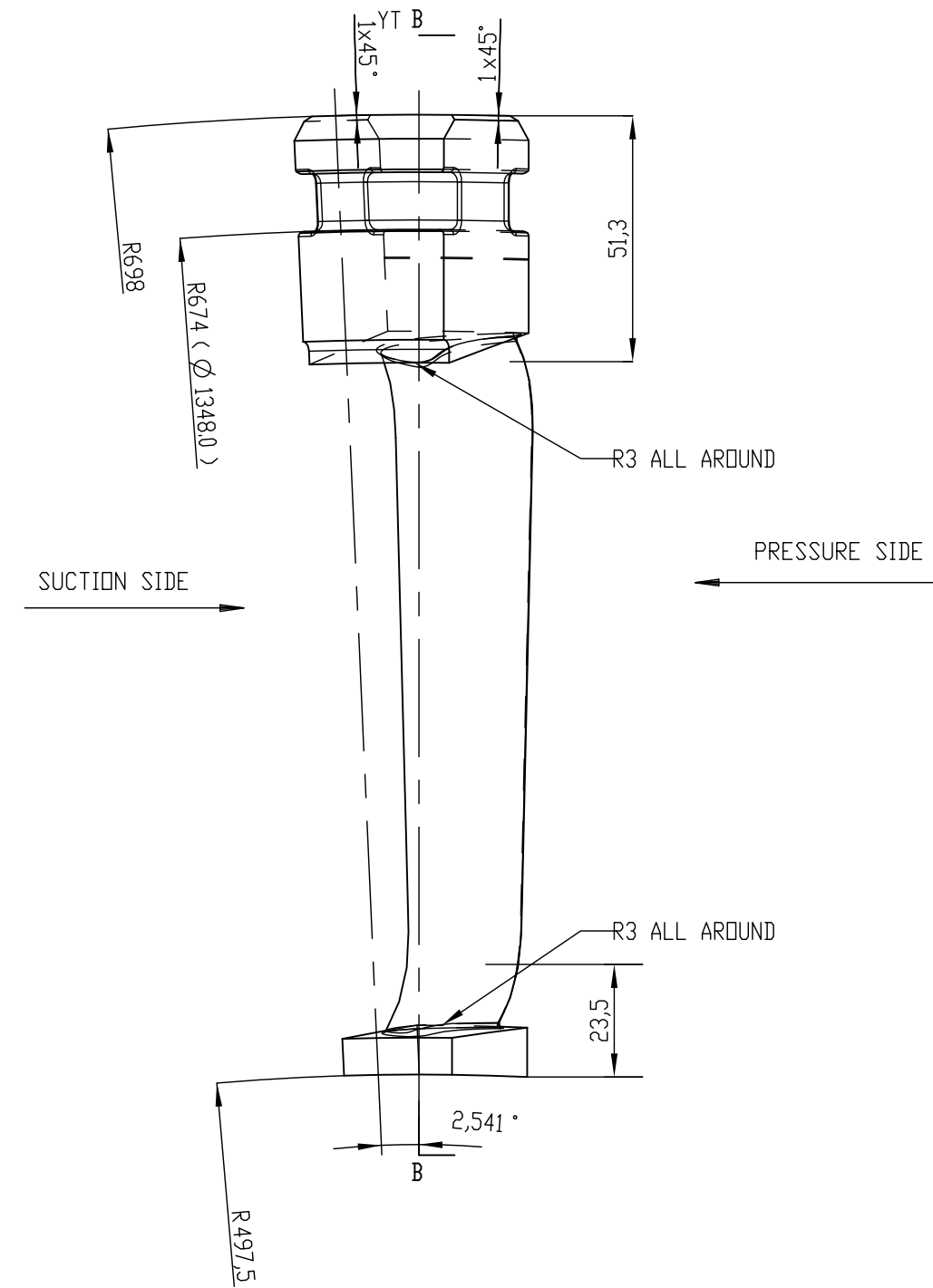
(ALL DIMENSIONS ARE IN mm)

SECTION B-B



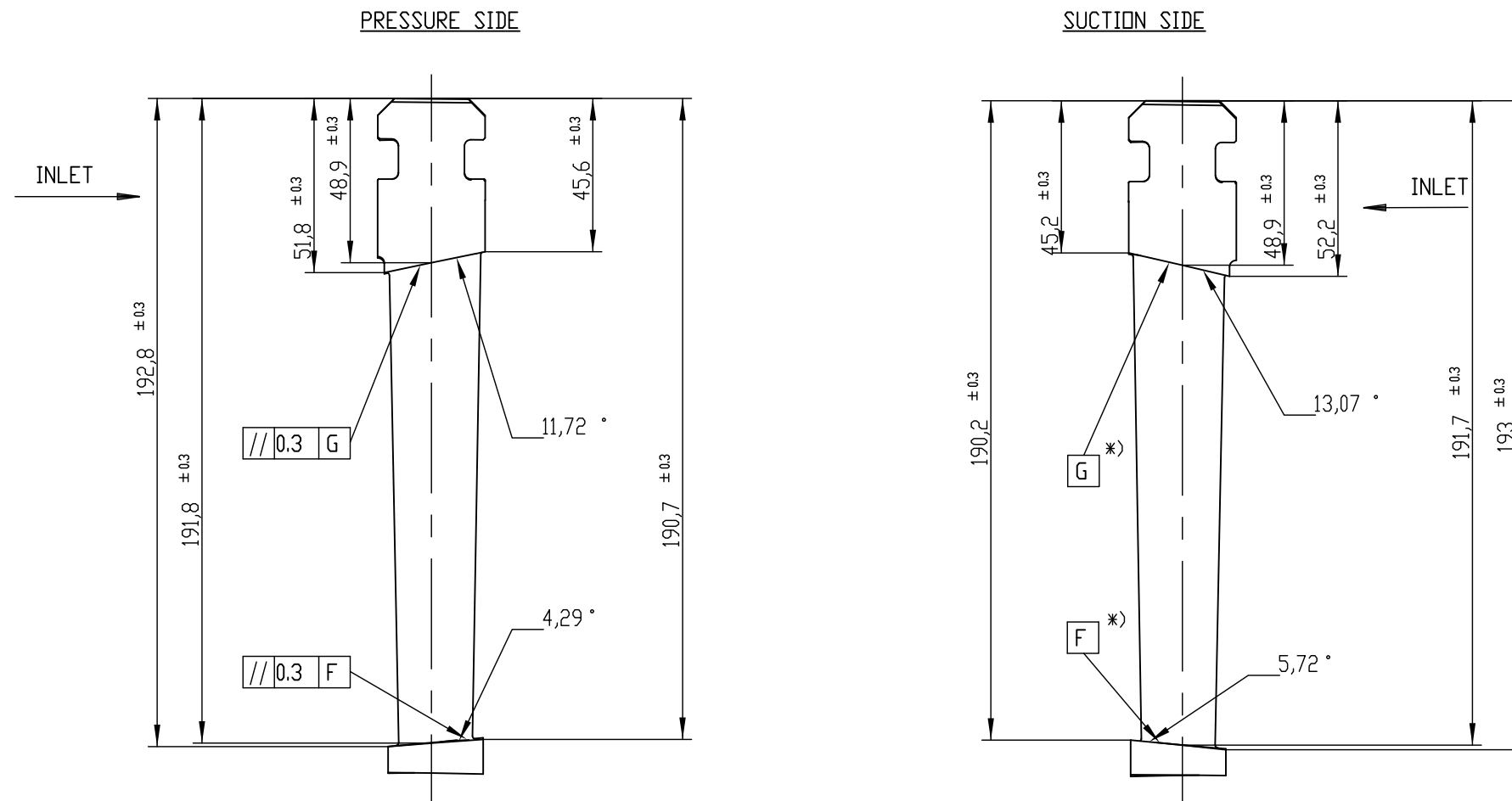
POS. NO: 1

DESIGN "RIGHT"



SCHEME FOR D AND S DIMENSIONS

*) REFERED TO ADJACENT BLADE



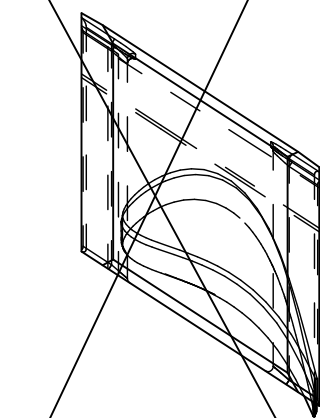
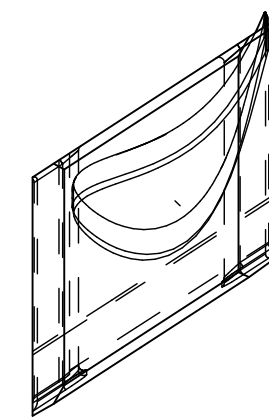
DESIGN: "LEFT"

DESIGN: "RIGHT"

L
LEFT
REVERSED IMAGE

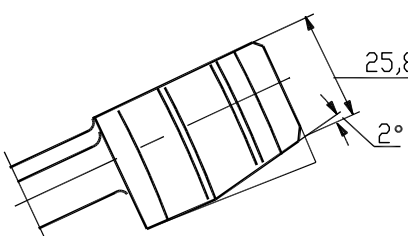
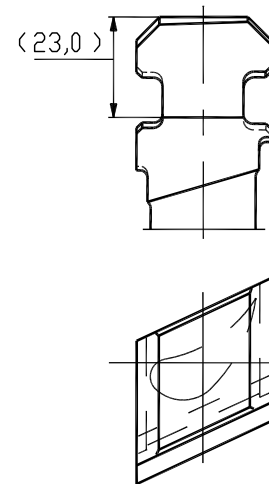
POS NO:1

R
RIGHT
AS DRAWN



POS NO:2

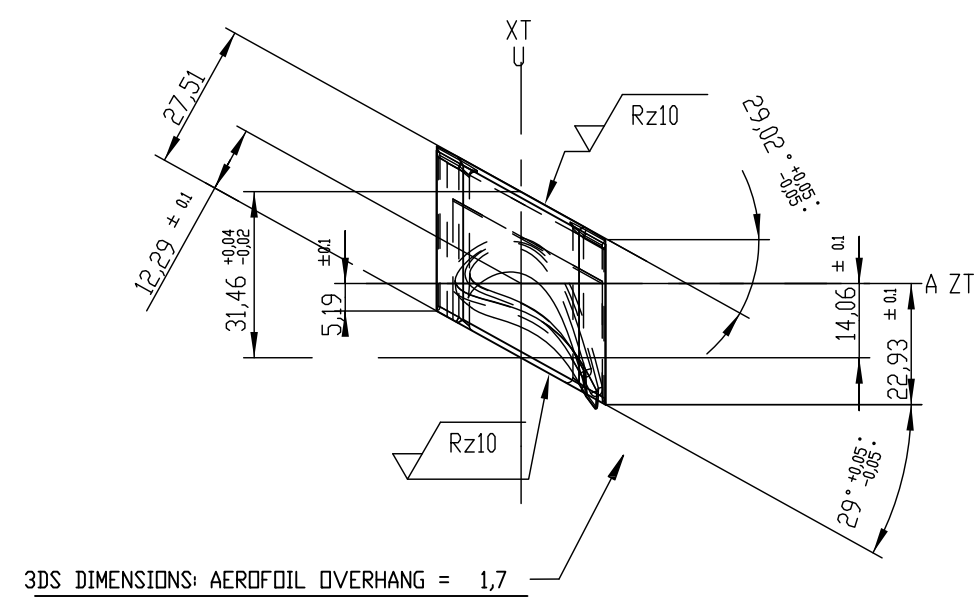
JOINT BLADE AT PARTING PLANE (2 NO.)
MADE BY REWORKING ON GUIDE BLADE (LEFT)



SECTION AX	Hx	Lges	AMI	UMA	RHK	BBI	D
A1 - A1	-10.0	27.90	9.55	11.95	0.15	52.66	8.99
A2 - A2	0.0	28.44	9.74	6.43	0.15	52.51	9.17
A6 - A6	12.0	29.09	9.98	2.60	0.15	52.35	9.38
A26-A26	72.0	32.39	11.17	3.51	0.16	51.49	10.44
A45-A45	129.0	35.58	12.32	5.19	0.17	50.65	11.47

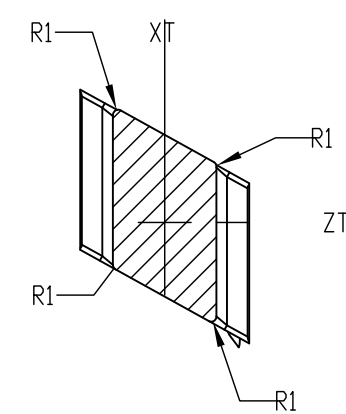
LOCAL SMALLEST RADIUS OF CURVATURE ON PRESSURE SIDE: 18.3 MM

VIEW X

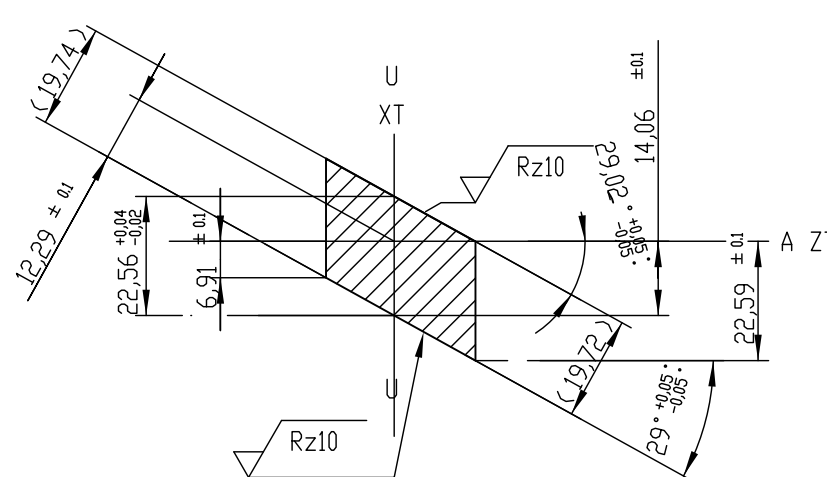


3DS DIMENSIONS: AERFOIL OVERHANG = 1.7

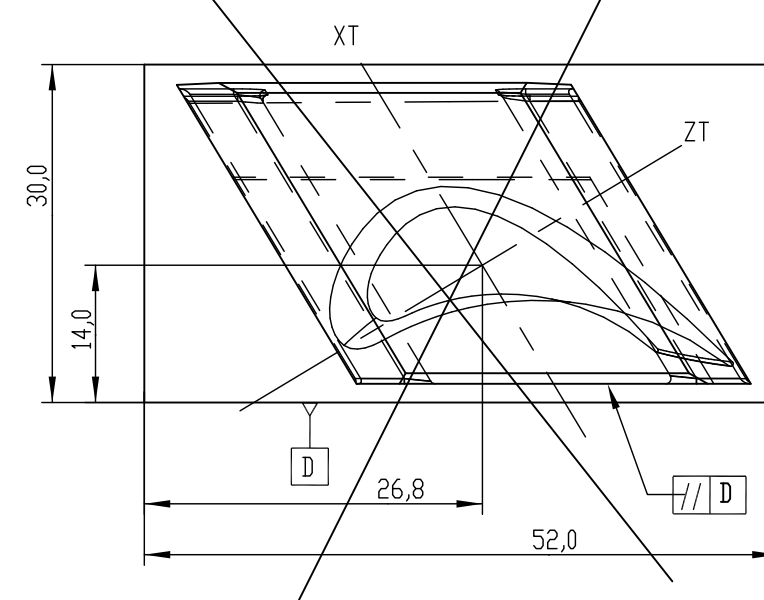
SECTION C-C



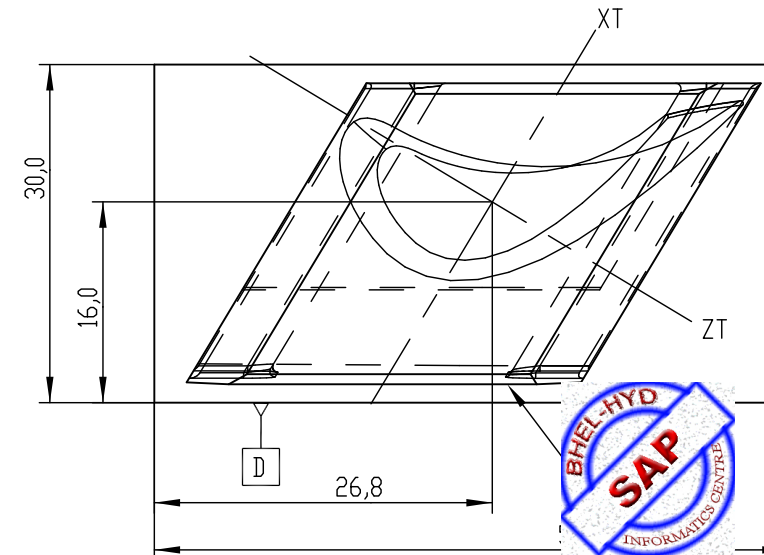
SECTION D-D



DESIGN: "RIGHT"



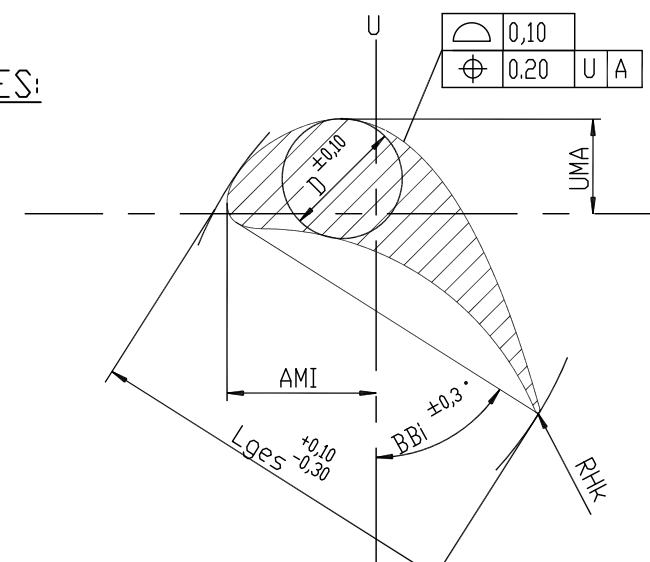
DESIGN: "LEFT"



CENTRE DISTANCES IN SEMI-FINISHED CONDITION

TECHNICAL REQUIREMENTS

1. TOLERANCES:



2. STRAK NUMBER: 80558

3. NUMBER OF BLADES/ROW: 140
(INCLUDING JOINT BLADES)

20(LEFT)	20
ROW NO.	VAR

TYPE OF PRODUCT OR NAME OF CUSTOMER/PROJECT		NAME		SIGN.	DATE	IND. OF VAR.
BHARAT HEAVY ELECTRICALS LTD. HYDERABAD		A. HEMASUNDAR			09/02/2005	-NA-
CHD: K. THIRUMATHULU		T.S. PRABHAKAR			09/02/2005	-NA-
APPD: T.S. PRABHAKAR					09/02/2005	-NA-
REF. TIT.	UNITS, DIMS. OR C/M/F	SCALE	WEIGHT (KG)	REF. TO ASSY. DRG.	ITEM NO.	IND. OF VAR.
45	1:1	NTS	0.37	-NA-	00	-NA-
TITLE		GUIDE BLADE - LEFT		DRAWING NO. 0-105-18-62011		REV. 00
SHT. No 20		IND. OF SHT. 21				