

THE INFORMATION ON THIS DOCUMENT IS THE PROPERTY OF BHARAT HEAVY ELECTRICALS LIMITED. IT MUST NOT BE USED DIRECTLY OR INDIRECTLY IN ANY WAY DETRIMENTAL TO THE INTEREST OF THE COMPANY.

REV.	DATE	ALTERED	REV.	DATE	ALTERED -SD-	ADDITIONAL INFORMATION	W.D.-63071-P-517-01		
		CHECKED			01			27.11.15	CHECKED -SD-
		APPROVED							APPROVED -SD-
					CUSTOMER APPROVED DGA PART LIST & ROLLER DRG. ATTACHED.	STATUS OF DRAWING	"PR"		
						DISTRIBUTION OF PRINTS	TRE-1, TRX-1 TRM-3		

NOTES:


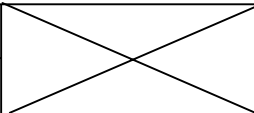
- Design of 125 MVAR, 420 kV, 3-ph. Shunt Reactor for NORTH KARANPURA STPP is exactly identical to 125 MVAR, 420 KV, 3-Ph. Shunt Reactor supplied for NTPC LARA STPP-I.
- Sheet 2 -6 of this Drawing is the approved DGA Drawing No. 9548-501-PVE-B-201-03 & BHEL Drg.No. 34690001351 , which has already been approved by NTPC vide transmittal. no. CC:PE:9548:501:25892 Dtd. 10/11/15
- Sheet 7 of this Drawing is the approved PART LIST Drawing No. 9548-501-PVE-B-202-03 & BHEL Drg.No. 34690001352, which has already been approved by NTPC vide transmittal. no. CC:PE:9548:501:25892 Dtd. 10/11/15.
- Sheet 8 of this Drawing is the approved BI-DIRECTIONAL ROLLER Drawing No. 9548-501-PVE-B-207-02 & BHEL Drg.No. 34690001357, which has already been approved by NTPC vide transmittal. no. CC:PE:9548:501:11079 Dtd. 18/11/14

EQUIPMENT DETAILS : 2x125 MVAR, 420KV, 3-PH, ONAN COOLED SHUNT REACTOR

NAME OF CUSTOMER : NTPC

PROJECT : EPC PACKAGE FOR NORTH KARANPURA STPP(3X660MW)

PO NO. : CS-4410-001-2-SC-NOA-6128 Dated 28.02.2014

SIGN. & DATE	 BHARAT HEAVY ELECTRICALS LTD. BHOPAL	PREP.	KUNDAN KUMAR	-sd-	27.11.15	NO. OF VAR.	—				
		DEPT. TRE		SCALE	—	WEIGHT (K.G.)	—	REF. TO ASSY. DRG.	—	ITEM NO.	—
INVENTORY NO.	CODE-406	/TITLE COVER SHEET OF DGA, ROLLER, DGA PART LIST					TRE/63071/DGA & ROLLER/2015		REV.	01	
							SHT. NO. 01	NO. OF SHT. 02			

THE INFORMATION ON THIS DOCUMENT IS THE PROPERTY OF BHARAT HEAVY ELECTRICALS LTD. IT MUST NOT BE USED DIRECTLY OR INDIRECTLY IN ANY WAY DETRIMENTAL TO THE INTEREST OF THE COMPANY.

NOTES:-

1. WHEN REFERRING THIS DRAWING PLEASE QUOTE MVAR & W.D. NO.
2. 320 DIA. TWIN BI-DIRECTIONAL ROLLERS MOUNTED AT 1676 mm RAIL GAUGE IN BOTH DIRECTION ARE PROVIDED FOR MOVEMENT OF REACTOR AT SITE AND ROLLERS ARE TO BE REMOVED BEFORE ERECTION
3. OUT SIDE FINISHING PAINT TO SHADE 5012.
4. WIRING FROM INSTRUMENT CTS. ETC. ARE NOT SHOWN FOR CLARITY.
5. FOUNDATION BOLTS ARE IN THE SCOPE OF BHEL SUPPLY.
6. FOR PART LIST OF OGA REFER DRAWING NO. 34690001352.
7. DIMNS. SHOWN THUS ARE OVERALL SHIPPING DIMENSIONS EXCLUSIVE OF PACKING.
8. DIMENSIONS SHOWN ARE WITH REF TO PLINTH LEVEL.
9. FOR TANK COVER BOLTING REFER DETAIL 'B' SHIT. NO. 03 OF 04.
10. ALL GASKETS USED FOR TRANSFORMERS & ACCESSORIES (IN CONTACT WITH DIL) WILL BE O-RING NITRILE RUBBER.
11. GLAND PACKING/GASKET MATERIAL SHALL BE OF "O" RING OF NITRILE RUBBER FOR ALL THE VALVE'S FLANGES. ALL THE FLANGES SHALL BE MACHINED."
12. PAINTING & DIL SHALL BE AS PER TECHNICAL SPECIFICATION.
13. ALL BOLTS & NUTS SHALL BE HOT DIP GALVANIZED/SS.
14. ALL FITTINGS, ACCESSORIES, ARRANGEMENT (SHOWN OR NOT SHOWN) SHALL BE PROVIDED INLINE WITH TECHNICAL SPECIFICATION.
15. REACTOR CAN BE WITHDRAWN WITH BUSHINGS WITHOUT FOULING WITH RADIATORS AND CONSERVATOR.

IMPORTANT NOTE:-

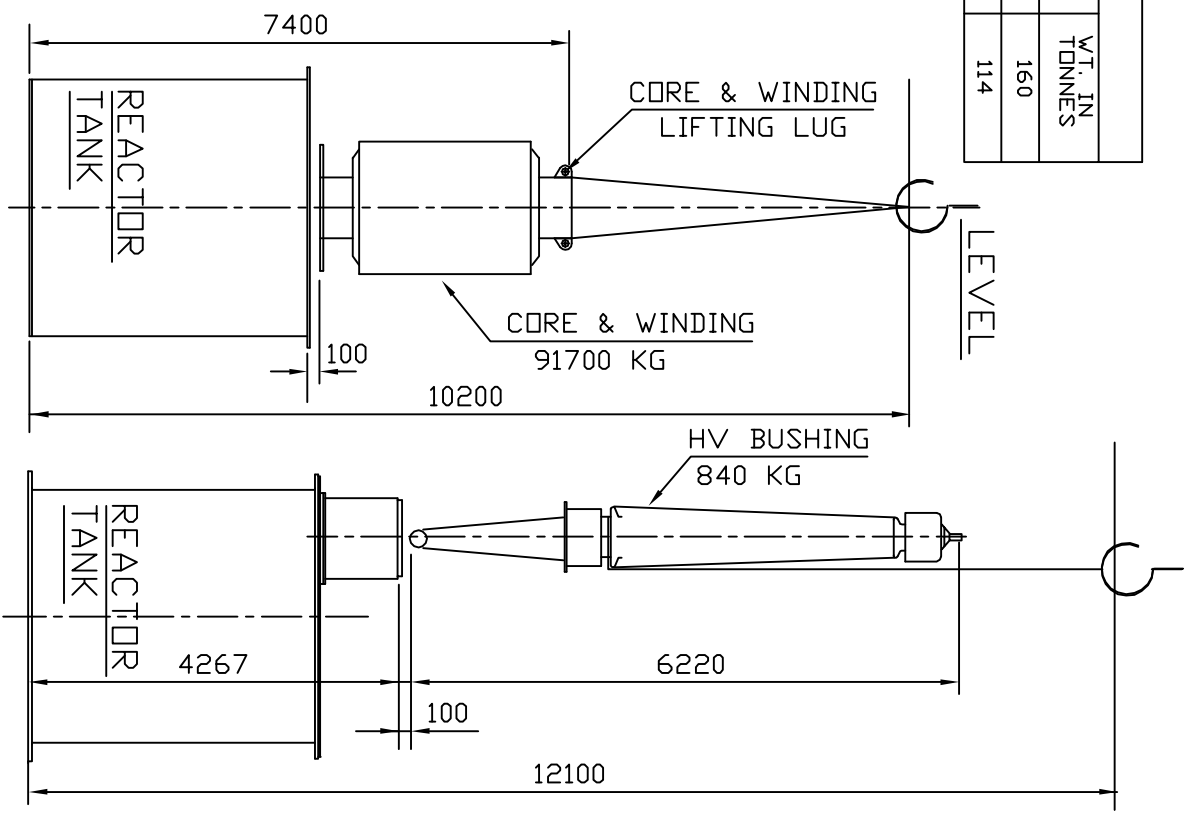
1. THE DESIGN FEATURES SHOWN ON THIS DRAWING (INLINE WITH IEC : 60076-6 APPLICABLE STANDARD & CUSTOMER SPECIFICATION) MEETS THE STATUDRY, REGULATORY & SAFETY REQUIREMENTS WITH RESPECT TO EARTHING ARRANGEMENT, DANGER & OTHER LABELS, CLEARANCES IN AIR PROVISION FOR PRESSURE RELIEF DEVICE, GAS ACTUATED RELAY AND ANTI-EARTHQUAKE CLAMPING ARRANGEMENT.

TRANSPORT WEIGHT DESCRIPTION	WT. IN TONNES
TRANSPORT WEIGHT (WITH DIL & BUSHING)	160
TRANSPORT WEIGHT (GAS FILLED WITHOUT BUSHING)	114

WEIGHT OF TRANSFORMER & DIL VOLUME		
DESCRIPTION	WT. IN KG	DIL (L)
DIL IN CONSERVATOR		2250
DIL IN RADIATOR		3440
RADIATOR BANK (WITHOUT DIL)	10690	
PIPE & SUPPORT WEIGHT	1870	
DIL IN PIPE WORK & HEADER		1720

APPROXIMATE WEIGHT & DIL QTY.		
DESCRIPTION	WT. IN KG	DIL (L)
CORE AND WINDING	91700	
TANK & FITTINGS	23705	47040
BUSHINGS	2720	
RADIATOR BANK, CONSERVATOR PIPE & HEADER	16020	7410
CONTROL CABINET	500	
TOTAL DIL	47375	54450
TOTAL WEIGHT	182020	

MIN. AIR CLEARANCES		
PHASE TO PHASE	420 KV	145 KV
PHASE TO EARTH	4000	NA
	3500	1050



TABLE

SUB ASSY. MK NOS.

SUB ASSY	MK01	MK02	MK03	MK04	MK05	MK06	MK07	MK08	MK09	MK10	MK11	MK12	MK13	MK14	MK15	MK16	MK17	MK18	MK19	MK20	MK21	MK22	MK23	MK24	MK25	MK26
QTY.	002	001	001	001	001	001	001	001	001	001	001	001	001	001	001	001	001	001	001	001	001	001	001	001	001	001

As confirmed by BHEL that 3D drawing shall be provided separately as built drawing

REV	DATE	ALT	RAKESH	REV	DATE	ALT	RAKESH	REV	DATE	ALT	RAKESH	REV	DATE	ALT	RAKESH	REV	DATE	ALT	RAKESH	REV	DATE	ALT	RAKESH	REV	DATE	ALT	RAKESH	REV	DATE	ALT	RAKESH	REV	DATE	
		CKD				CKD				CKD				CKD					CKD															
		APPD				APPD				APPD				APPD					APPD															

PROJECT	NTPC LARA STPP-1
PO.NO.	CC-9548-501-02-FC-NOA-6115 DATE: 24.02.14
TYPE OF PRODUCT	125 MVAR, 420 KV, 3-PHASE, ONAN SHUNT REACTOR
NAME OF CUSTOMER	M/S NATIONAL THERMAL POWER CORPORATION
PROJECT	NTPC DRG. NO. 9548-501-PVE-B-201
PROJECT	NTPC LARA STPP-1
TYPE OF PRODUCT	125 MVAR, 420 KV, 3-PHASE, ONAN SHUNT REACTOR
NAME OF CUSTOMER	M/S NATIONAL THERMAL POWER CORPORATION

PROJECT	NTPC LARA STPP-1
PO.NO.	CC-9548-501-02-FC-NOA-6115 DATE: 24.02.14
TYPE OF PRODUCT	125 MVAR, 420 KV, 3-PHASE, ONAN SHUNT REACTOR
NAME OF CUSTOMER	M/S NATIONAL THERMAL POWER CORPORATION

PROJECT	NTPC LARA STPP-1
PO.NO.	CC-9548-501-02-FC-NOA-6115 DATE: 24.02.14
TYPE OF PRODUCT	125 MVAR, 420 KV, 3-PHASE, ONAN SHUNT REACTOR
NAME OF CUSTOMER	M/S NATIONAL THERMAL POWER CORPORATION

PROJECT	NTPC LARA STPP-1
PO.NO.	CC-9548-501-02-FC-NOA-6115 DATE: 24.02.14
TYPE OF PRODUCT	125 MVAR, 420 KV, 3-PHASE, ONAN SHUNT REACTOR
NAME OF CUSTOMER	M/S NATIONAL THERMAL POWER CORPORATION

PROJECT	NTPC LARA STPP-1
PO.NO.	CC-9548-501-02-FC-NOA-6115 DATE: 24.02.14
TYPE OF PRODUCT	125 MVAR, 420 KV, 3-PHASE, ONAN SHUNT REACTOR
NAME OF CUSTOMER	M/S NATIONAL THERMAL POWER CORPORATION

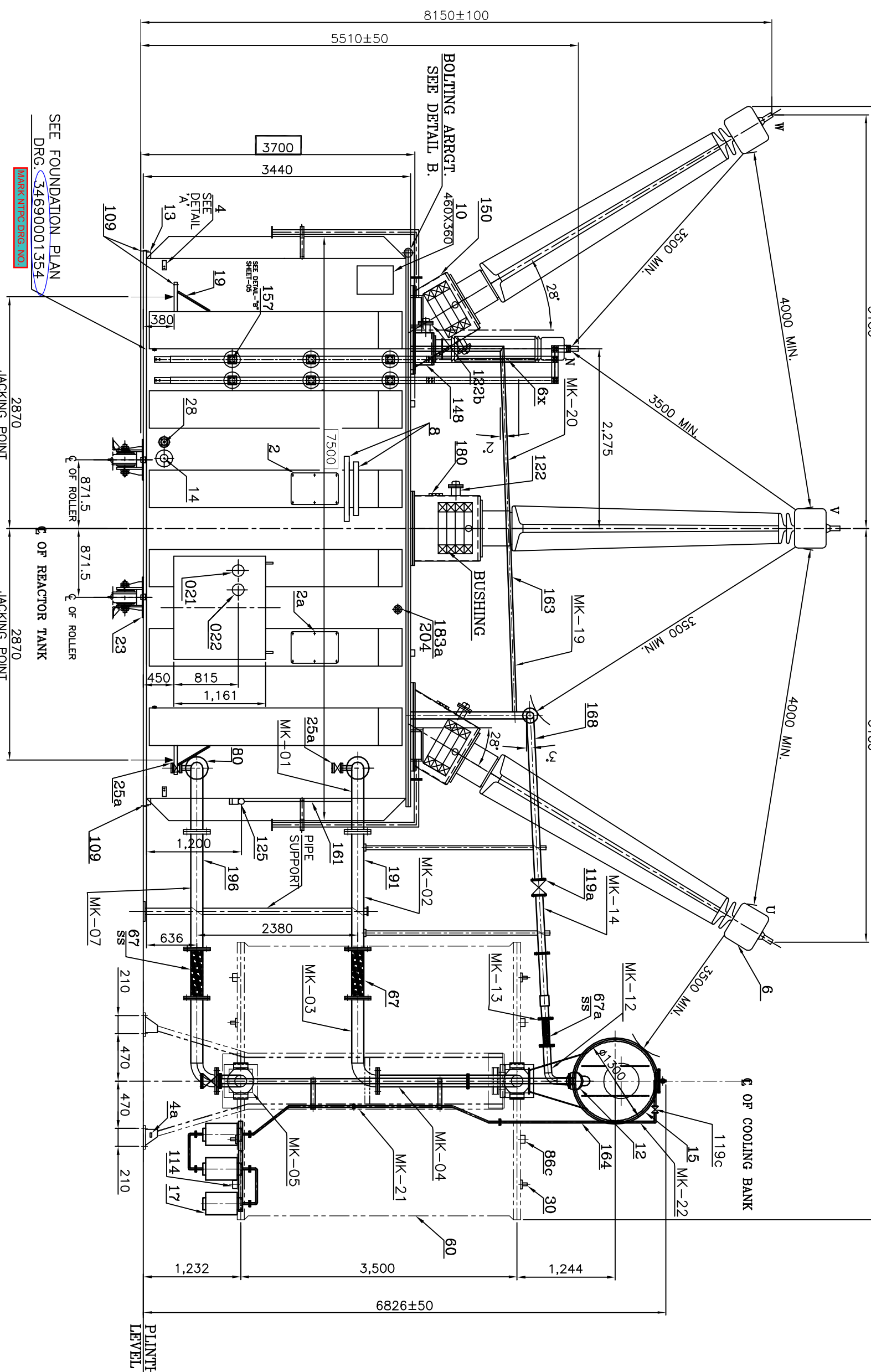
PROJECT	NTPC LARA STPP-1
PO.NO.	CC-9548-501-02-FC-NOA-6115 DATE: 24.02.14
TYPE OF PRODUCT	125 MVAR, 420 KV, 3-PHASE, ONAN SHUNT REACTOR
NAME OF CUSTOMER	M/S NATIONAL THERMAL POWER CORPORATION

PROJECT	NTPC LARA STPP-1
PO.NO.	CC-9548-501-02-FC-NOA-6115 DATE: 24.02.14
TYPE OF PRODUCT	125 MVAR, 420 KV, 3-PHASE, ONAN SHUNT REACTOR
NAME OF CUSTOMER	M/S NATIONAL THERMAL POWER CORPORATION

THE INFORMATION ON THIS DOCUMENT IS THE PROPERTY OF BHARAT HEAVY ELECTRICALS LTD. IT MUST NOT BE USED DIRECTLY OR INDIRECTLY IN ANY WAY DETRIMENTAL TO THE INTEREST OF THE COMPANY.

INVENTORY NO. SIGN. DATE REF. DRG. NO.

Table with 4 columns: REV, DATE, ALT, RAKESH. It lists revisions 01 through 03, including dates like 2008.14 and 09.10.15, and revision codes like 'SD' and 'APPD'.



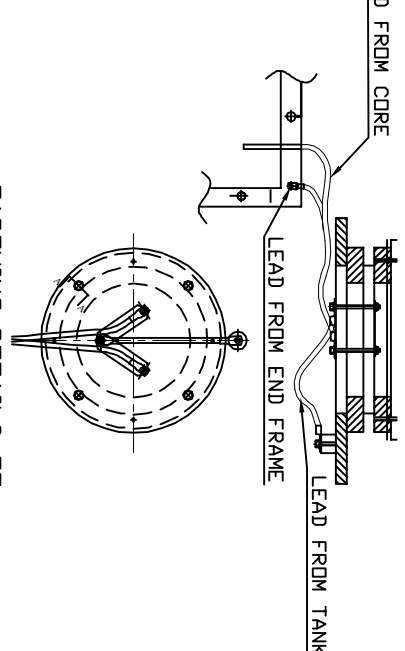
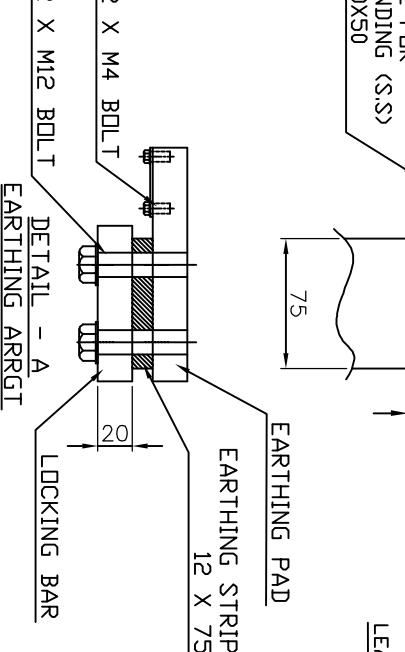
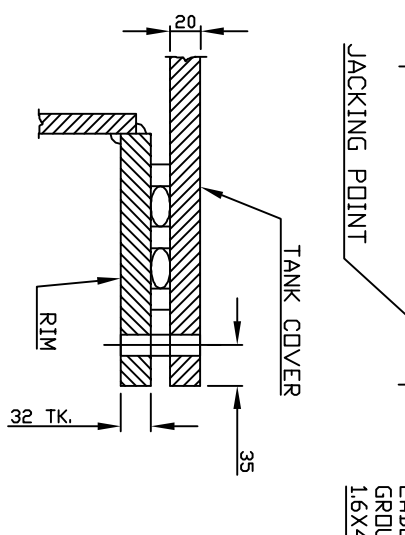
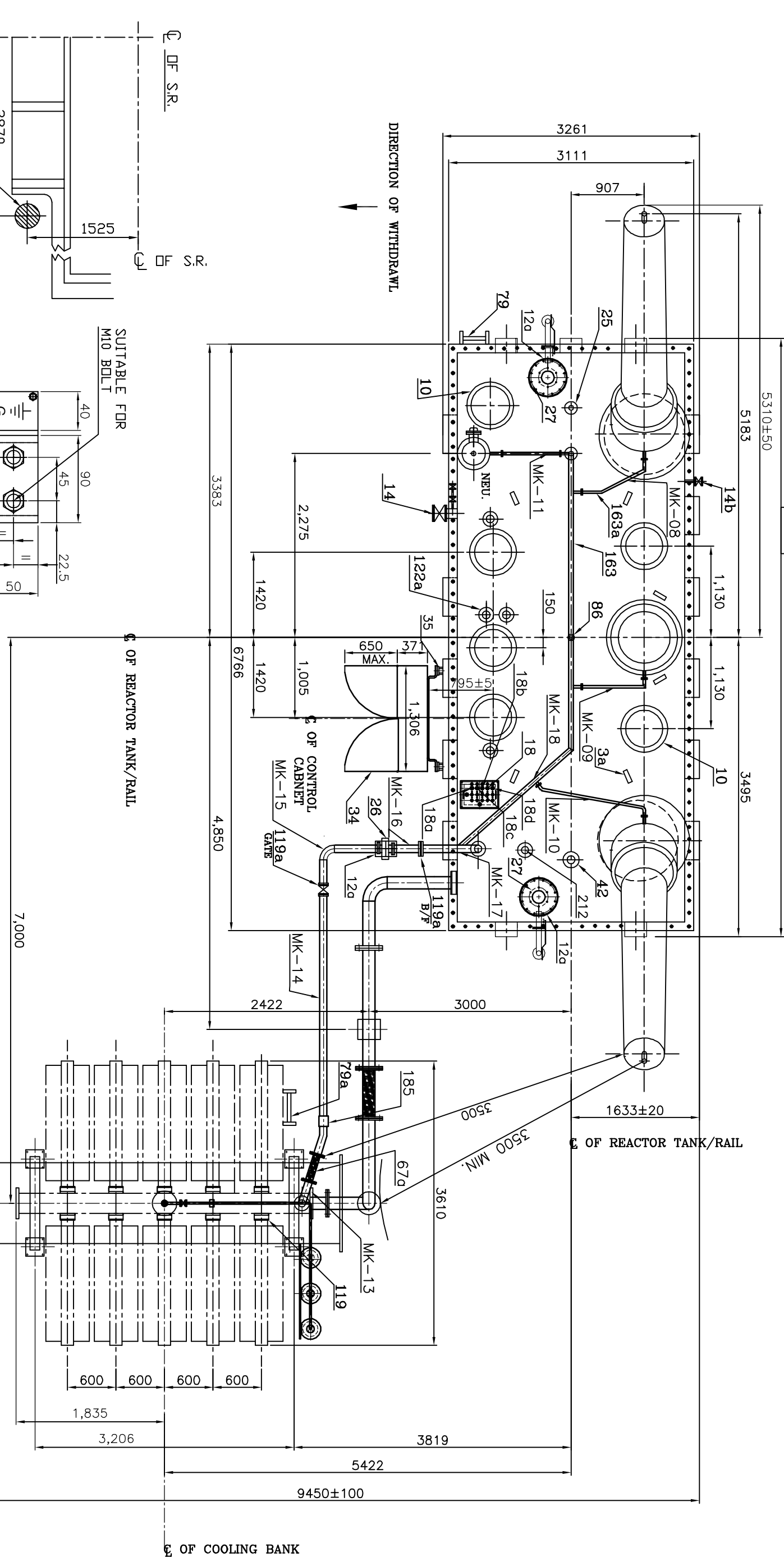
SEE FOUNDATION PLAN DRG. 34690001354

NEUTRAL SIDE

Project information block containing fields for PROJECT (NTPC LARA STPP-1), PO. NO. (CC-9548-501-02-FC-NOA-6115), TYPE OF PRODUCT (125 MVAR, 420 KV, 3-PHASE, ONAN SHUNT REACTOR), and a detailed revision table at the bottom.

THE INFORMATION ON THIS DOCUMENT IS THE PROPERTY OF BHARAT HEAVY ELECTRICALS LTD. IT MUST NOT BE USED DIRECTLY OR INDIRECTLY IN ANY WAY DETRIMENTAL TO THE INTEREST OF THE COMPANY.

INVENTORY NO. SIGN. DATE REF. DRG. NO.



NOTE :-
CORE/CLAMP/TANK EARTHING PROVISION IS PROVIDED OUTSIDE TANK SUITABLE FOR 2 KV (rms) FOR 1 MINUTE. INSPECTION COVER PROVIDED FOR THE ABOVE.

REV	DATE	ALT	RAKESH	REV	DATE	ALT	RAKESH	REV	DATE	ALT	RAKESH	REV	DATE	ALT	RAKESH
03	09.10.15	CKD	KD/RKS	02	04.12.14	APPD	KD/AK	01	20.08.14	APPD	KD/AK				
		APPD													

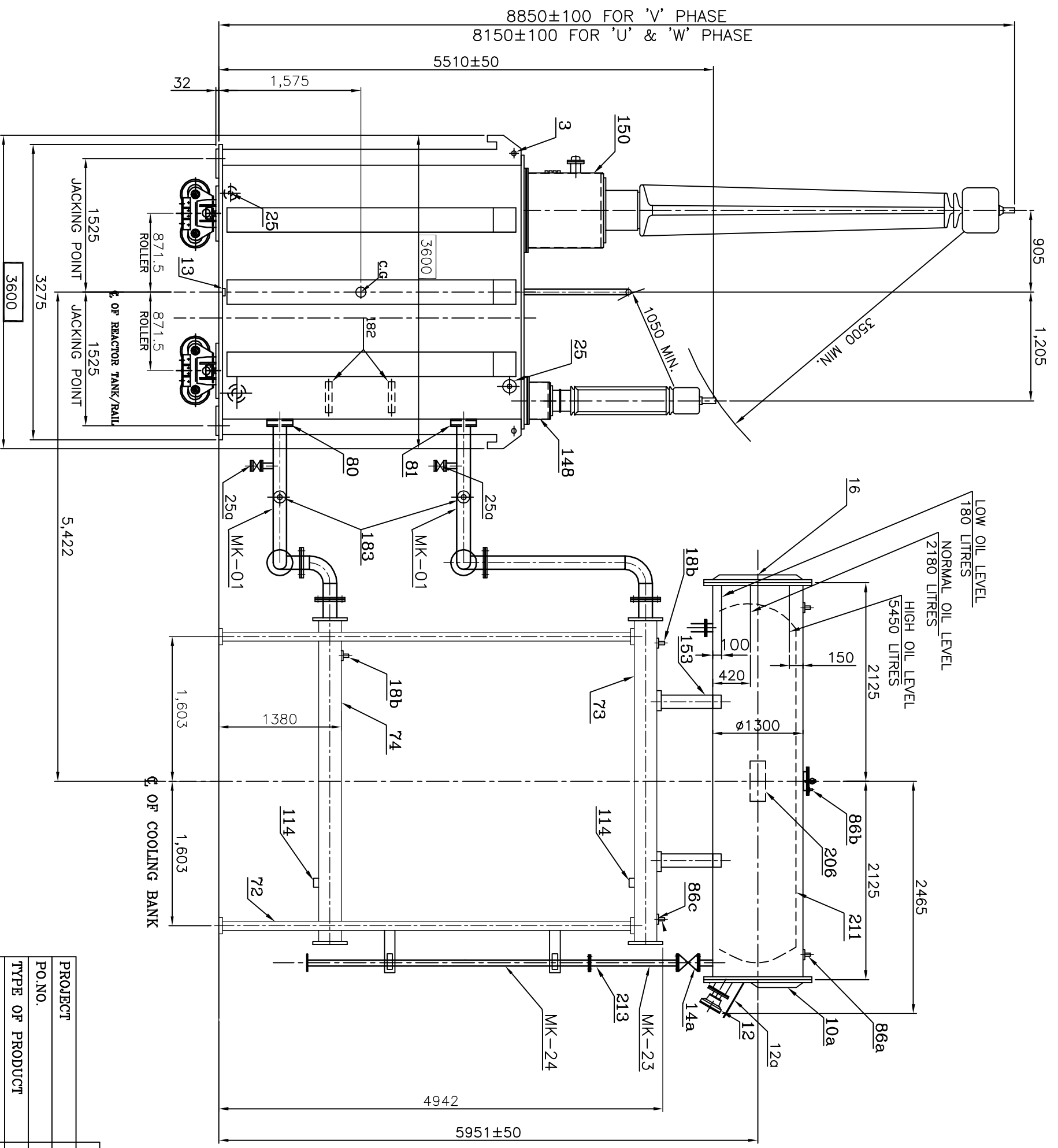
PROJECT	NTPC LARA STPP-1
P.O. NO.	CC-9548-501-02-FC-NOA-6115 DATE: 24.02.14
TYPE OF PRODUCT	125 MVAR, 420 KV, 3-PHASE, ONAN SHUNT REACTOR
NAME OF CUSTOMER	M/S NATIONAL THERMAL POWER CORPORATION
ADDITIONAL INFORMATION	
V.D.	63067-A-517-01
STATUS OF DRAWING	UP
DISTRIBUTION OF PRINTS	406
TRE-1, TRM-3	
TITLE	OUTLINE GENERAL ARRANGEMENT (PLAN VIEW)
DRG. NO.	3 469 00 01351
SHEET	03 OF 05

REV. 03

401 402 403 404 405 406 407 408

FIRST ANGLE PROJECTION 15310 00 694 3 IN 944

THE INFORMATION ON THIS DOCUMENT IS THE PROPERTY OF BHARAT HEAVY ELECTRICALS LTD. IT MUST NOT BE USED DIRECTLY OR INDIRECTLY IN ANY WAY DETRIMENTAL TO THE INTEREST OF THE COMPANY.



REV	DATE	ALT	RAKESH	DATE	ALT	RAKESH	DATE	ALT	RAKESH	DATE	ALT	RAKESH	DATE	ALT	RAKESH	DATE	ALT	RAKESH	
03	09.10.15	CKD	KD/RKS	02	04.12.14	APPD	KD/AK	01	20.08.14	APPD	KD/AK								
ZONE NTPC COMMENTS INCORPORATED.																			
ZONE CUSTOMER COMMENTS INCORPORATED.																			
ZONE CUSTOMER COMMENTS INCORPORATED.																			
SHEET 5 ADDED.																			
SHEET 5 ADDED.																			

PROJECT	NTPC LARA STPP-1
PO.NO.	CC-9548-501-02-FC-NOA-6115 DATE: 24.02.14
TYPE OF PRODUCT	125 MVAR, 420 KV, 3-PHASE, ONAN SHUNT REACTOR
NAME OF CUSTOMER	M/S NATIONAL THERMAL POWER CORPORATION
ADDITIONAL INFORMATION	
V.D.	63067-A-517-01
STATUS OF DRAWING	'U'
DISTRIBUTION OF PRINTS	TRP-1, TRM-3
TITLE	OUTLINE GENERAL ARRANGEMENT
(END VIEW)	

NTPC DRG. NO.	9548-501-PVE-B-201
DRN.	RAKESH
CHKD.	KD/AK
APPD.	KD/AK
SIGN.	
DATE	28.05.14
REV.	
	3 469 00 01351
	03

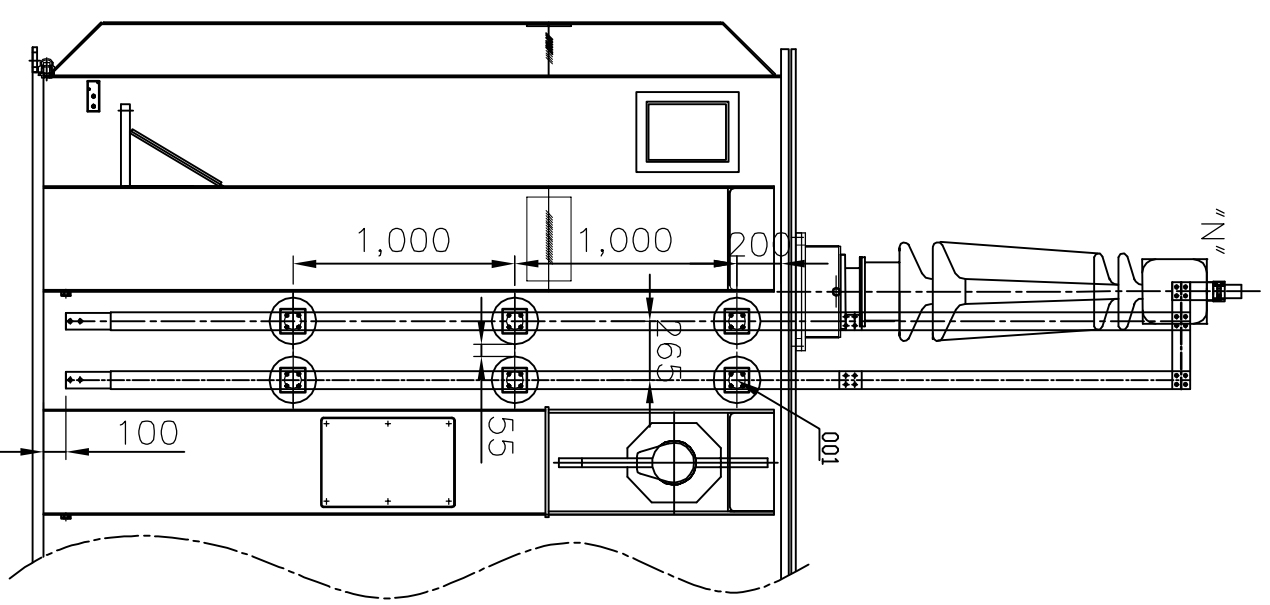
401 402 403 404 405 406 407 408

408CALL DIMENSIONS ARE IN mm)

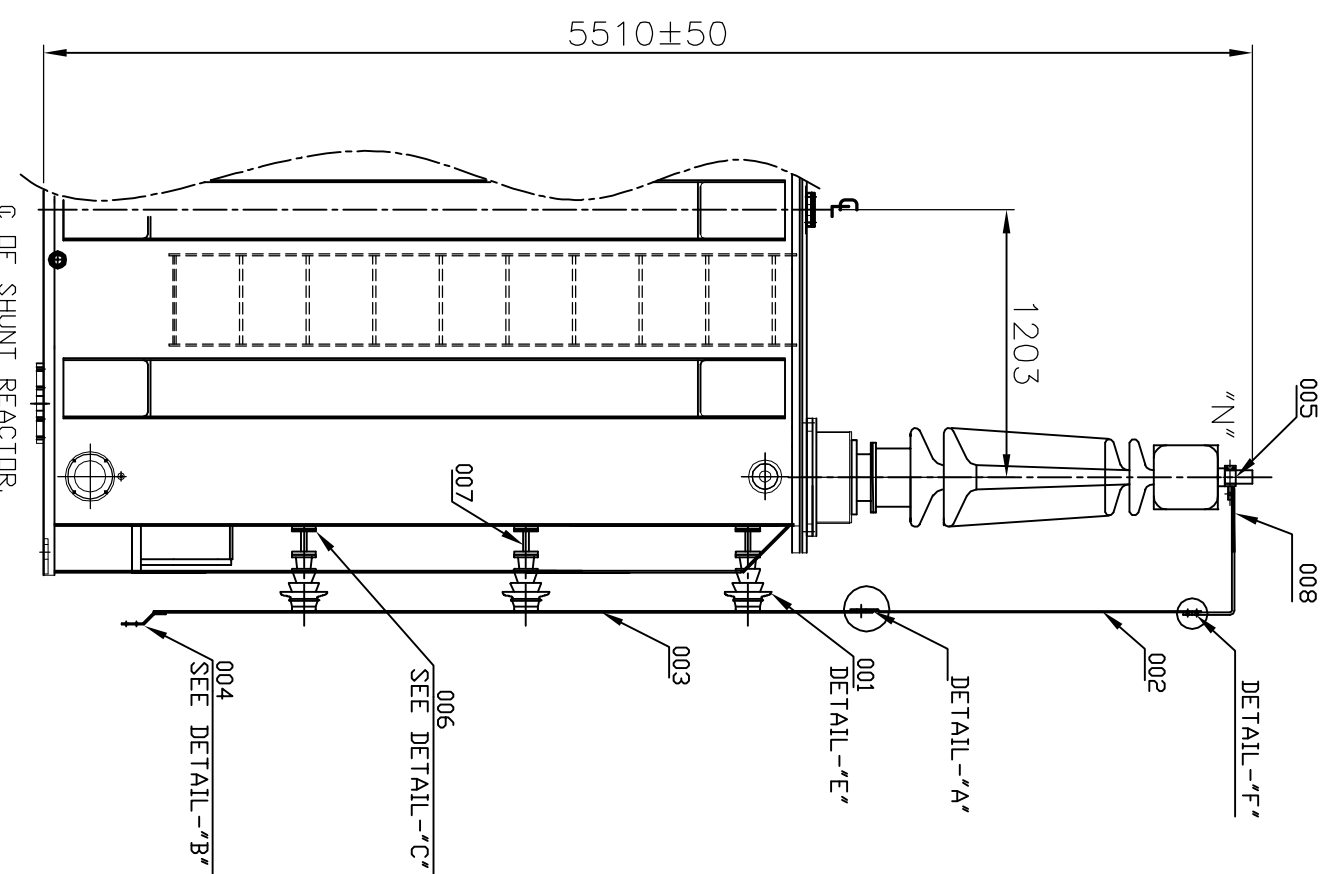
THE INFORMATION ON THIS DOCUMENT IS THE PROPERTY OF BHARAT HEAVY ELECTRICALS LTD. IT MUST NOT BE USED DIRECTLY OR INDIRECTLY IN ANY WAY DETRIMENTAL TO THE INTEREST OF THE COMPANY.

INVENTORY NO. SIGN. DATE REF. DRG. NO.

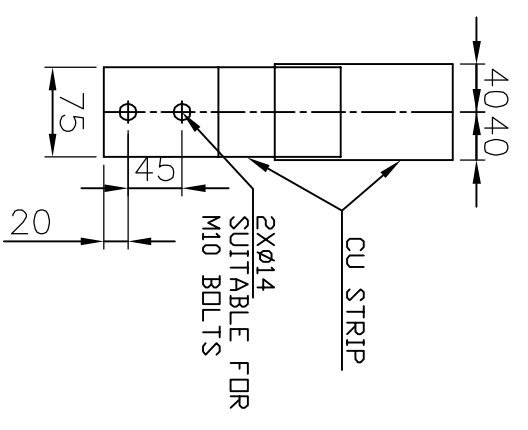
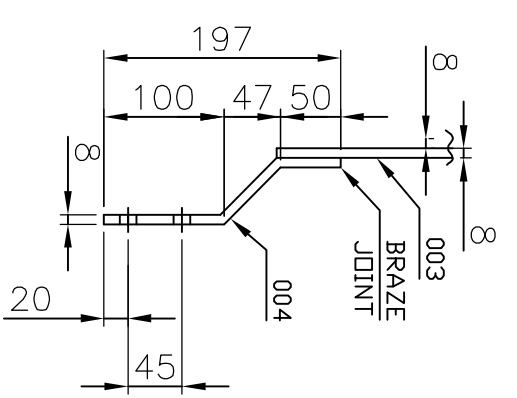
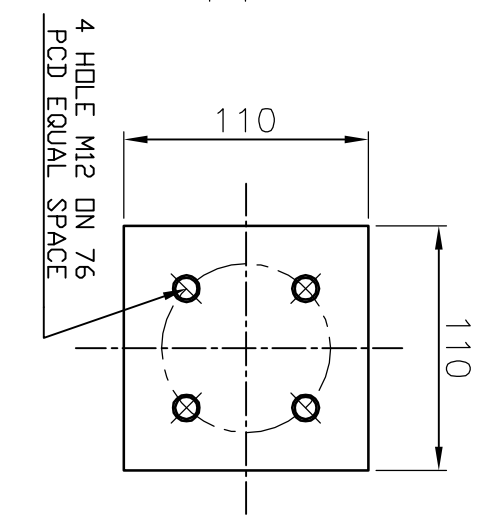
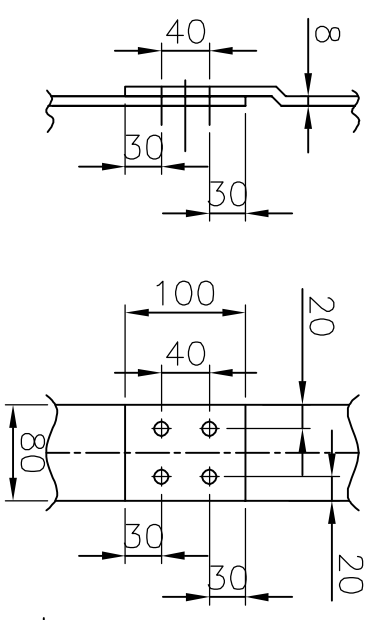
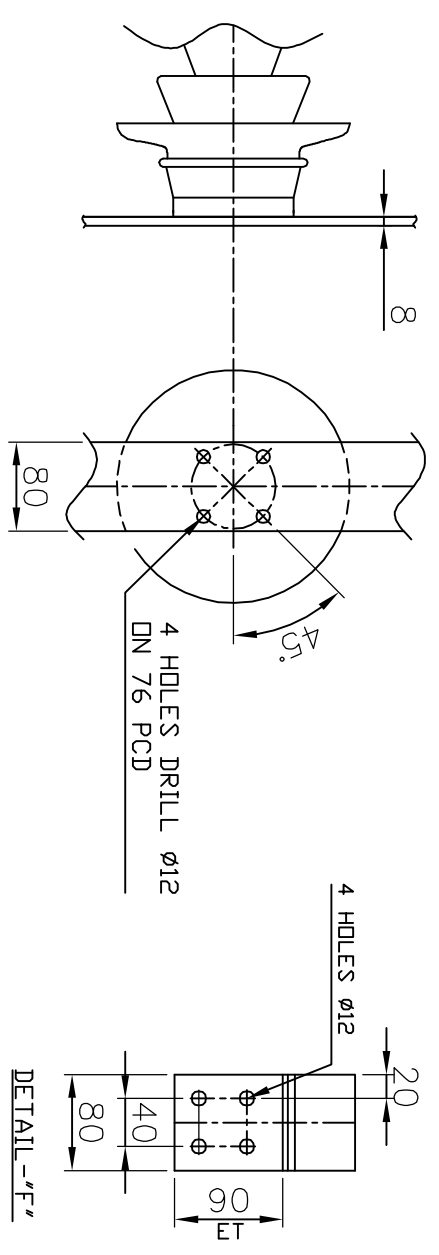
SL. NO.	ITEM NO.	DESCRIPTION	QTY.
01	001	POST INSULATOR (22 KV)	6
02	002	COPPER STRIP (8 TK X 80) COPPER	2
03	003	GROUNDING BAR (8 TK X 80) COPPER	2
04	004	GROUNDING BAR (8 TK X 75)	2
05	005	LUG TERMINAL CONNECTOR	1
06	006	MOUNTING PAD	3
07	007	SUPPORT FOR POST INSULATOR	3
08	008	FLEXIBLE COPPER STRIP (10TK X125)	1
09	6x	145 KV, 1250 Amp. NEUTRAL BUSHING	1



ELEVATION VIEW



END VIEW



REV	DATE	ALT	RAKESH	REV	DATE	ALT	RAKESH	REV	DATE	ALT	RAKESH	REV	DATE	ALT	RAKESH
CKD				CKD				CKD				CKD			
APPD				APPD				APPD				APPD			

PROJECT	NTPC LARA STPP-1
PO. NO.	CC-9548-501-02-FC-NOA-6115 DATE: 24.02.14
TYPE OF PRODUCT	125 MVAR, 420 KV, 3-PHASE, ONAN SHUNT REACTOR
NAME OF CUSTOMER	M/S NATIONAL THERMAL POWER CORPORATION
ADDITIONAL INFORMATION	NTPC
V.D.	63067-A-517-01
STATUS OF DRAWING	U
DISTRIBUTION OF PRINTS	TR-1, TRM-3
TITLE	OUTLINE GENERAL ARRANGEMENT (NEUTRAL FORMATION ARRGT.)
DRN.	RAKESH
CHD.	KD/AK
APPD.	KD/AK
SCALE	SCALE-NTS
DRG. NO.	3 469 00 01351
SHEET	05 OF 05
REV.	03

THE INFORMATION ON THIS DOCUMENT IS THE PROPERTY OF BHARAT HEAVY ELECTRICALS LTD. IT MUST NOT BE USED DIRECTLY OR INDIRECTLY IN ANY WAY DETRIMENTAL TO THE INTEREST OF THE COMPANY.

REV	DATE	ALT	RAKESH	REV	DATE	ALT	RAKESH
01	09.10.15	CKD	KD/RKS	02	04.12.14	CKD	KD/AK
03	09.10.15	APPD	KD/RKS	02	04.12.14	APPD	KD/AK

- NOTES:-
- EACH VALVES SHALL BE PROVIDED WITH INDICATOR TO SHOW CLEAR POSITION OF THE VALVE.
 - WEIGHTS & OIL QUANTITIES ARE FINAL.
 - CABLE TRAY ON REACTOR TANK FOR CABLING OF INSTRUMENTS.
 - RADIATOR BANK IS PROVIDED WITH THERMOMETER POCKETS WITH CAPTIVE SCREW CAPS AT COOLER INLET AND OUTLETS.
 - LATCHING LUGS SHALL BE PROVIDED.
 - TERMINAL MARKING PLATE & RATING PLATE SHALL BE PROVIDED FOR BUSHINGS, VALVES, POCKETS, CT TBS ETC.
 - INSPECTION COVER SHALL BE PROVIDED FOR CORE/CLAMP/TANK EARTHING AND FOR ACCESSING CT CONDITION.
 - PRISMATIC LEVEL GAUGE SHALL BE PROVIDED BY BHEL.
 - ALL MAKE SHALL BE NTPC QA APPROVED.

REV	DATE	ALT	RAKESH	REV	DATE	ALT	RAKESH
01	09.10.15	CKD	KD/RKS	02	04.12.14	CKD	KD/AK
03	09.10.15	APPD	KD/RKS	02	04.12.14	APPD	KD/AK

ITEM NO	DESCRIPTION	QTY	ZONE
74	BOTTOM HEADER	1	504-E
86c	AIR RELEASE PLUGS (3/4" BSP) 10 NOS FOR RADIATORS 2 NOS FOR TOP & BOTTOM HEADER	12	206-C
114	DRAIN PLUG (3/4" BSP) 10 NOS FOR RADIATORS 2 NOS FOR TOP & BOTTOM HEADER	12	206-F
119	ISOLATING VALVES FOR RADIATORS (80 NB BUTTERFLY)	20	307-D
161	GAS COLLECTING DEVICE PIPE (6 NB)	1	205-E
163	EQUALISING PIPE (50NB)	1	204-C
163a	EQUALISING PIPE (25NB) FOR TURRETS	4	303-B
183	40 NB GUN METAL VALVE FOR ON LINE GAS MONTG. SYSTEM	2	404-E
191	TOP OIL PIPE 200 NB (RADIATOR BANK)	1	205-D
196	BOTTOM OIL PIPE 200 NB (RADIATOR BANK)	1	205-E
10a	INSPECTION COVER FOR OIL CONSERVATOR (BOLTED) 20 KG	1	406-B
12	OIL GAUGE MAGNETIC TYPE WITH LOLA (M/S SUKRU UDYOG PUNE)	1	406-C
12a	RAIN HOOD (FOR PRV, MCG, BUCHHDLZ RELAY)	4	304-E
14a	50 NB DRAIN GATE VALVE FOR OIL CONSERVATOR	1	406-E
15	OIL CONSERVATOR 1300 DIA (ATMOSEAL TYPE)	1	206-B
16	PRISMATIC OIL LEVEL GAUGE	1	404-C
17	DEHYDRATING BREATHER NON CARCINOGENIC WITH SILICAGEL (3 IN SERIES) (INDICATING TYPE) WITH TRANSPARENT ENCLOSURE.	1	206-E
26	BUCHHDLZ RELAY (80 NB)	1	304-C
67a	FLEXIBLE HOSE PIPE (80 NB) STAINLESS STEEL	1	205-C
79a	LADDER WITH LOCKING DEVICE	1	306-D
86a	AIR RELEASE PLUG (3/4" BSP) ON CONSERVATOR	2	306-B
86b	AIR RELEASE PLUG (1/4" BSP) FOR CONSERVATOR.	1	205-B
119a	ISOLATING VALVE BUTTERFLY FOR BUCHHDLZ RELAY (80 NB) (1- GATE 1- BUTTERFLY)	2	205-C
119c	15 NB GATE VALVE FOR BREATHER	1	205-C
125	GAS COLLECTING DEVICE	1	205-E
153	CONSERVATOR SUPPORTS	2	404-C
164	BREATHER PIPE (15 NB)	1	206-C
168	CONSERVATOR PIPE (80 NB)	1	204-C
206	BHEL MONOGRAM	1	405-B
211	ATMOSEAL ARRANGEMENT (INSIDE THE CONSERVATOR)	1	405-B
213	CONSERVATOR DRAIN PIPE (50 NB)	1	406-D
6	HV LINE BUSHINGS 420 KV 1600A	3	205-B
6X	HV NEUTRAL BUSHING 145 KV 1250A	1	203-C
122	CONNECTION BOX FOR C T TERMINAL (HV)	3	203-C
122a	CONNECTION BOX FOR C T TERMINAL (HV) ON COVER	4	303-C
122b	CONNECTION BOX FOR C T TERMINAL (HV)	1	203-D
148	NEUTRAL TURRET	1	203-D
150	HV TURRETS	3	202-D
157	NEUTRAL GROUNDING ARRGT.	1	202-D
180	BUSHING TERMINAL MARKING PLATE	4	203-D

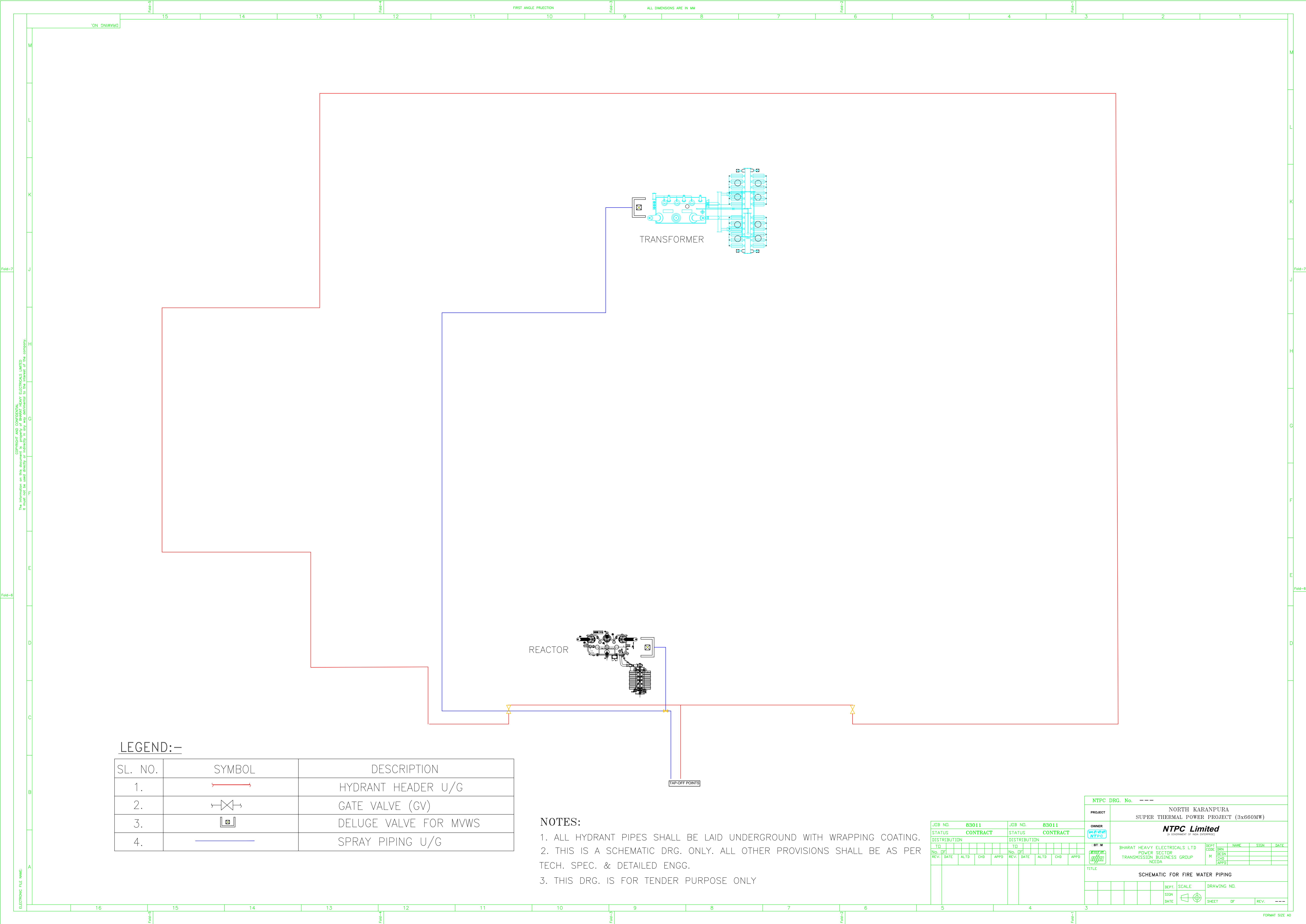
REV	DATE	ALT	RAKESH	REV	DATE	ALT	RAKESH
01	09.10.15	CKD	KD/RKS	02	04.12.14	CKD	KD/AK
03	09.10.15	APPD	KD/RKS	02	04.12.14	APPD	KD/AK

ITEM NO	DESCRIPTION	QTY	ZONE
2	BILINGUAL RATING AND DIAGRAM PLATE (HINDI & ENGLISH)	1	203-E
2a	DOS & DON'T'S INSTRUCTION PLATE	1	204-E
3	LIFTING LUGS (60000 KG. EACH)	4	402-D
3a	LIFTING LUGS FOR TANK COVER	6	304-B
4	EARTHING TERMINAL DIAGONALLY OPPOSITE (SIZE 20TK X 50 X 120 LG.) STAINLESS STEEL	2	202-E
8	NAME PLATES (ENGLISH & HINDI)	1+1	203-D
10	INSPECTION COVERS (25 Kgs EACH) 6 NOS. ON TANK COVER 1 NO. ON TANK	6+1	304-A 302-C
13	DRAIN PLUGS ON TANK 1" BSP	2	402-F
14	100 NB DRAIN GATE VALVE WITH SAMPLING VALVE (2 NOS X 15 NB IN SERIES)	1	203-F
18	POCKET FOR DTI	1	304-C
18a	POCKET FOR VTI	1	304-C
18b	ORDINARY THERMOMETER WITH POCKET 1 NO ON TANK COVER 2 NO ON HEADER	2+1	304-C 404-C
18c	RTD POCKET FOR DTI	1	304-C
18d	RTD POCKET FOR VTI	1	304-C
19	JACKING PADS 60000 KG EACH	4	202-F
21	OIL TEMPERATURE INDICATOR.	1	204-F
22	WINDING TEMPERATURE INDICATOR DIAL TYPE WITH REPEATER	1	204-F
23	MOUNTING PAD FOR 320 DIA TWIN BI-DIRECTIONAL ROLLERS. ROLLERS ONLY FOR REACTOR MOVEMENT AT SITE.	4	204-G
25	50 NB GATE VALVE ON TANK AND COVER (FILTER VALVE, TOP & BOTTOM DIAGONALLY OPPOSITE)	2+1	302-B 402-F
27	PRESSURE RELIEF DEVICE WITH OIL COLLECTOR ASSY. AND PIPE DISCHARGE ARRANGEMENT.	2	305-C
28	15 NB GATE VALVE FOR OIL SAMPLING (2 IN SERIES)	2	203-F
34	COOLER CONTROL CABINET (TANK MOUNTED)	1	304-D
35	ANTI VIBRATION PAD	4	303-C
42	VALVE FOR CONNECTION TO VACUUM PUMP (100 NB BUTTERFLY)	1	305-B
79	LADDER WITH LOCKING DEVICE	1	302-C
80	BUTTERFLY VALVE (200 NB) AT INLET.	1	403-E
81	BUTTERFLY VALVE (200 NB) AT OUTLET.	1	403-E
86	AIR RELEASE PLUG 1/2" BSP.	1	303-B
109	PULLING HOLE DIA 64/HAU-LAGE LUGS	8	204-F
183a	40 NB GATE VALVE FOR SUDDEN PRESSURE RELAY	1	204-D
204	SUDDEN PRESSURE RELAY	1	204-D
212	COVER EARTHING OF CORE AND CORE CLAMPS.	1	305-B
4a	EARTHING TERMINAL (20 TK X 50 X 110 LG.) (FOR RADIATOR SUPPORT)	2	206-F
25a	DRAIN/FILTER VALVE (50 NB GATE) FOR COOLING SYSTEM (2 NO. EACH)	2	204-F 204-E
30	LIFTING LUGS FOR RADIATORS (20) & HEADER (4). (LIFTING CAPACITY 1100 KG EACH)	24	206-C
60	RADIATOR BANK (NO OF INDIVIDUAL UNITS = 10)	1	207-D
67	FLEXIBLE HOSE PIPE (200 NB) (TOP & BOTTOM) STAINLESS STEEL	2	206-D
72	'A' FRAME SUPPORTS (BEARING CAPACITY = 30 TONNES)	2	405-F
73	TOP HEADER	1	404-D

REV	DATE	ALT	RAKESH	REV	DATE	ALT	RAKESH
01	09.10.15	CKD	KD/RKS	02	04.12.14	CKD	KD/AK
03	09.10.15	APPD	KD/RKS	02	04.12.14	APPD	KD/AK

TABLE OF FITTINGS

PROJECT	NTPC LARA STPP-1
PO.NO.	CC-9548-501-02-FC-NOA-6115 DATE: 24.02.14
TYPE OF PRODUCT	125 MVAR, 420 KV, 3-PHASE, ONAN SHUNT REACTOR
NAME OF CUSTOMER	M/S NATIONAL THERMAL POWER CORPORATION
ADDITIONAL INFORMATION	ड्राइंग नं. 3469 00 01352
V.D. 63067-A-517-01	BHARAT HEAVY ELECTRICALS LTD. BHOPAL
STATUS OF DRAWING	SCALE: NTS
DISTRIBUTION OF PRINTS	DRG. NO. 3469 00 01352
TRE-1, TRM-3	SHEET 01 OF 01



LEGEND:-

SL. NO.	SYMBOL	DESCRIPTION
1.		HYDRANT HEADER U/G
2.		GATE VALVE (GV)
3.		DELUGE VALVE FOR MVWS
4.		SPRAY PIPING U/G

NOTES:

1. ALL HYDRANT PIPES SHALL BE LAID UNDERGROUND WITH WRAPPING COATING.
2. THIS IS A SCHEMATIC DRG. ONLY. ALL OTHER PROVISIONS SHALL BE AS PER TECH. SPEC. & DETAILED ENGG.
3. THIS DRG. IS FOR TENDER PURPOSE ONLY

JOB NO.	83011	JOB NO.	83011
STATUS	CONTRACT	STATUS	CONTRACT
DISTRIBUTION		DISTRIBUTION	
TO		TO	
REV.	DATE	REV.	DATE

NTPC DRG. No. ---		PROJECT		NORTH KARANPURA SUPER THERMAL POWER PROJECT (3x660MW)	
OWNER		NTPC Limited (A Government of India Enterprise)			
BY		BHARAT HEAVY ELECTRICALS LTD		DEPT.	SCALE
BY		POWER SELECTOR		M	DATE
BY		TRANSMISSION BUSINESS GROUP		CHD	DATE
BY		NOIDA		APPD	DATE
TITLE					
SCHEMATIC FOR FIRE WATER PIPING					
SIGN		DRAWING NO.		SHEET	
DATE		REV.		---	

ELECTRONIC FILE NAME: The information on this document is property of Bharat Heavy Electricals Limited. It must not be used directly or indirectly in any circumstances to the interest of the company.

