



BHARAT HEAVY ELECTRICALS LIMITED

(A Government of India Undertaking)
HIGH PRESSURE BOILER PLANT
PURCHASE DEPARTMENT - FOSSIL BOILERS
THIRUCHIRAPALLI - 620014
TAMILNADU (INDIA)

PHONE :2577645
GRAMS : BHARATELEC
FAX NO: 2520719
E-mail: srchandran@bheltry.co.in
Web:

429-002/A

Vendor Code : 23505	Enquiry No	Enquiry Date	Due Date for Quotation
Vendor Name : Open Tender Dummy Code Australia	2681400044	16.12.2014	24.01.2015
Please quote Enquiry No, Date and due date in all correspondences. This is only a request for quotation and not an order. <u>Bid should be submitted in Two Parts. 1. Techno-commercial Bid (Part-I) and 2. Price Bid (Part-II) in a separate sealed cover and both the covers must be placed in a Third Cover and Sealed. Our Enquiry No., Enq. date & Enq. Due date must be written on all Three covers.</u>			

Item	Description	Unit	Quantity	Delivery Quantity	Schedule Date
10	Design, Supply (Except ducting), Installation, Testing, commissioning of New Air Cooled Air-conditioning system in operation theatre at main hospital as per the following data and specifications. As per the Qualifying Criteria - PART A Scope of Work - PART B and BOQ - PART C	SET	1.000	1.00	14.03.15

General Note:


1. Please submit your detailed offer in three part bid system i.e Part-1. EMD amount of Rs.1,00, 000 in one separate sealed cover. Part-II. Technical bid+ Unpriced bid indicating taxes & duties (Annexure-B) + Checklist (Annexure-B) in a sealed cover Part-III. Priced offer in another separate sealed cover.

All the three covers shall be duly super-scribed with tender reference and due date of opening. These covers shall be put in a single cover duly super-scribed with tender reference and due date of opening and addressed to us.

2. Point-to-point confirmation to BHEL's specification and commercial terms & conditions shall be provided Annexure-A. All the Annexures should be filled and submitted along with the technical bid (no row shall be left blank), else your offer is liable for rejection.
3. Offers with validity of less than 180 days and non-acceptance of LD , RP clause, PBG, EMD & Payment terms, will lead to liable for rejection of submitted offer.
4. If the due date of tender opening happens to be a holiday, the tenders will be opened on the next working day.
5. All clarifications may be sought at least ten days prior to tender due date, from the undersigned with due written request.
6. BHEL reserves the right to go for a reverse auction (RA) instead of opening the submitted sealed bid, which will be decided after technical evaluation. Information and general terms and conditions covering RA are

The offers should reach us 30 minutes before the time of opening of tenders. The offers will be opened at 14.30 hrs on the due date of tender in the presence of tenderers who have submitted their offer and who may like to be present for the tender opening. Late and delayed offers are liable to be rejected.

Yours faithfully,
For **BHARAT HEAVY ELECTRICALS LIMITED**


MANAGER / PURCHASE
(FOSSIL BOILERS)
Yours faithfully,
P.G. ABIR
Senior Manager / Purchase
BHEL, TRICHY - 620 014



BHARAT HEAVY ELECTRICALS LIMITED

(A Government of India Undertaking)
HIGH PRESSURE BOILER PLANT
PURCHASE DEPARTMENT - FOSSIL BOILERS
THIRUCHIRAPALLI - 620014
TAMILNADU (INDIA)

PHONE :2577645
GRAMS : BHARATELEC
FAX NO: 2520719
E-mail: srchandran@bheltry.co.in
Web:

Page
2/2

2681400044 / 16.12.2014

23505

given in commercial terms and conditions (Annexure-A/Point no.18)

7. Corrigendum if any, with respect to this tender will be hosted only in the website <http://www.bhel.com> or <http://tenders.gov.in>. You are requested to visit the website regularly for updates.

8. BHEL will consider MSME vendor as per Government guidelines.

9. Vendors are requested to avoid the following points while submitting the Bid Documents:

- Loose or spiral bound bid documents are not encouraged.
- In case of any corrections/overwriting in the tender documents, the same shall be duly attested by the bid submitter.

10. Vendors representative having proper ID proof and authorization letter shall attend the tender opening.

Special Provisions for Micro and Small Enterprises (MSE)

MSE suppliers can avail the intended benefits only if they submit along with offer, attested copies of either EM II (Entrepreneur Memorandum Part II) certificate having deemed validity (five years from the date of issue of acknowledgement in EM II) or valid NSIC certificate or EM II certificate along with attested copy of a CA certificate (Format enclosed as per Annexure - IV applicable for the relevant financial year (latest audited), certifying quantum of investment in plant and machinery within the permissible limit as per the act for relevant status (Micro or small) where the deemed validity of EM II is over. Date to be reckoned for determining the deemed validity will be the last date of technical bid submission. Offer/s received without these documents will lead to consideration of their offer at par with other bidders and MSE status of such suppliers shall be shifted to Non MSE supplier.

List of Attachments:

- Qualifying Criteria Part-A
- Technical specifications Part-B & C
- Commercial Terms and Conditions Annexure-A
- Price Bid format Annexure-B

Enclosures:

"LD clause has to be confirmed without fail."

The offers should reach us 30 minutes before the time of opening of tenders. The offers will be opened at 14.30 hrs on the due date of tender in the presence of tenderers who have submitted their offer and who may like to be present for the tender opening. Late and delayed offers are liable to be rejected.

Yours faithfully,
For **BHARAT HEAVY ELECTRICALS LIMITED**


MANAGER / PURCHASE
(FOSSIL BOILERS)
Yours faithfully,
P.G. ABRAHAM
Senior Manager
Purchase / MM / MFG
BHEL, TRICHY - 620 014.

PART-A QUALIFICATION CRITERIA

Design ,Supply (except ducting) , Installation, Testing, commissioning of New Air Cooled Air-conditioning system in Main Hospital Operation Theatre at BHEL, Trichy

Sl.No.	Description	Vendor to specify details
1	Only those vendors, who have Design,Supplied and commissioned such type of airconditioning system for at least three companeies in the past five years and such item should be working satisfactorily for a minimum period of one year after completion of commissioning as on the date of opening of this tender.	
2	The vendor should submit following details which are necessary for qualifying their offer.	
2.1	Name and postal address of the customer / company where similar equipment commissioned.	
2.2	Name and designation of the contact person of the customer.	
2.3	Phone, FAX no and email address of the contact person of the customer.	
2.4	Along with Technical offer, the Vendor should submit performance certificate from minimum one customer for the satisfactory performance of the same, supplied to them in the customers letter head.	
3	BHEL reserves the right to verify the information provided by vendor. In case the information provided by vendor is found to be false / incorrect, the offer shall be rejected.	

PART-B SCOPE OF WORK

Name of work: Design ,Supply (except ducting) , Installation, Testing, commissioning of New Air Cooled Air-conditioning system in Main Hospital Operation Theatre at BHEL, Trichy

Scope of work: New Air cooled air-conditioning system comprising of all accessories except ducting has to be designed , supplied ,Installed to the existing ducting system, then the above installation has to be tested and commissioned by the supplier in the above location as per the following technical specification.

Sl. No.	Description	Specified/To be confirmed by vendor	Qty	Offered	Deviations
Item 01	Equipment Details of Existing Air cooled Air conditioning System				
1.10	Air cooled air conditioning system (2 x 20 TR) consisting Compressors, Air Handling Units , Motors , Condensers, FCU, Piping, pipe fittings, valves, electrical controls etc.	Vendor to confirm	2 Units		
1.11	Air Handling Units : Make : M/s Batliboi Capacity :4000CFM - 1 No & 2000CFM - 1 No(Total 2 No's) Type : Horizontal flow Accessories: Std. Design with Blower, Chilled water coils filter sec. volume control damper, Motor and drive set	Vendor to confirm	2 No's		
1.12	Compressor Unit with Condenser: Type: Reciprocating Capacity : (2X20TR) Make: M/s Batliboi	Vendor to confirm	4 No's		
1.13	Expansion Tank: Capacity :500 Litre	Vendor to confirm	1 No		
1.14	Fan Coil units: coil units with all std.Fittings 2.0 TR - 1 No, Fan coil units with all std.Fittings 1.5 TR - 7 Nos. Fan Fan coil units with all std.Fittings 1.0 TR - 1 No.		9 No's		
	Filter Box with micron Filter		2 sets		
Item 02	Design, Supply , Installation, Testing and commissioning of New Air cooled air-conditioning system				
	DESIGN INPUT DATA				
2.10	Total Area	2600 Sq.Ft			
2.11	Height	9 Ft			
2.12	Occupancy	10 No's			
2.13	Equipment Load	5 HP			

Sl. No.	Description	Specified/To be confirmed by vendor	Qty	Offered	Deviations
2.14	Lighting load	5000 Watts			
2.15	Required Fresh air changes per hour	1			
2.16	Required Inside design Temperature	20+/- 2 Deg C			
2.17	Inside design RH	55+/-5 %			
2.18	Out side condition	45 Deg C			
2.19	Operating hours of the plant	12 Hours			
2.20	Application for which the air conditioning is required.	operation theatre			
2.21	Existing system	Main Hospital Operation Theatre: Existing Units Capacity of 20TR x 2 No's Air Cooled Reciprocating plant(1 Working & 1 Standby)			
2.22	Air Handling system	Type : vertical flow Capacity: 2000 CFM- 1 No & 4000 CFM- 1 No Make: Batliboi	2 No's		
2.23	Fan Coil units:	Fan coil units with all std.Fittings 1.5 TR	7 No's		
2.24	Ducting arrangement (existing)	Square Duct of size 600 mm x 550 mm Duct Material: GI sheet			
2.25	Layout of existing AC system	Enclosed			
Item 03	Design and Supply of Air-cooled screw chillers with minimum operating capacity of 20TR x 2 nos. units (with one working & one as standby) with microprocessor based control panel, air cooled condenser, chiller, refrigerant piping , scroll compressor, motors, pump, required valves etc.				
3.10	Specification for Air Cooled Chiller Unit				
3.11	Type	Air cooled Scroll chiller			
3.12	Capacity of the Chiller at operating condition	Vendor to specify			
3.13	Refrigerant to be used (Non-CFC)	Vendor to confirm (Non-CFC)			
3.14	Unit observed power	Vendor to specify			
3.15	KW/TR	Vendor to specify			
3.16	Number of Compressors	Vendor to specify			
3.17	Number of Refrigerant circuit	Vendor to specify			
3.18	Method of starting	Vendor to specify			
3.19	Dimensions (mm)	Vendor to specify			
3.20	Overall weight	Vendor to specify			
Item No. 04	Specification for COMPRESSOR				
4.10	Type of Compressor:	Semi-hermetic / hermetic scroll type			
4.11	Capacity at operating conditions	Vendor to specify			
4.12	BHP at operating conditions	Vendor to specify			
4.13	BHP /TR at operating conditions	Vendor to specify			

Sl. No.	Description	Specified/To be confirmed by vendor	Qty	Offered	Deviations
4.14	Power consumption at 100 % Load 75 % Load 50 % Load	Vendor to specify			
4.15	Lubrication system	Lubrication system should be force-fed and should include an integral oil separation system, oil sump and oil filter. Vendor to confirm			
4.16	Temperature Control System	The temperature should be controlled during operation to maintain proper oil temperatures throughout lubrication system. Hence, suitable temperature control system to be integrated Vendor to confirm			
4.17	Capacity Control System	The step-less capacity control system should be there to modulate compressor capacity automatically. Vendor to confirm			
4.18	Compressor-Motor assembly	The assembly should be installed on a common base frame with anti-vibration mounts. Vendor to confirm			
4.19	Accessories	Suction check valve, suction filter, suction service valve and discharge check valve. Vendor to confirm			
4.20	Overall dimensions & weight	Vendor to specify			
4.21	Noise level at 1 meter distance in dB (A)	Vendor to specify			
4.22	Vibration level	Vendor to specify			
Item 05	Specification of water pump				
5.10	Type	Mono block Centrifugal chilled Water pump			
5.11	Capacity	Vendor to specify			
5.12	Pump motor type & rating	Vendor to specify			
5.13	Quantity	1 Working & 1 stand by	2 No's		
Item No. 06	Specification for AIR-COOLED CONDENSER				
6.10	Type of Condenser	Air-cooled type which uses ambient air to condense the refrigerant.			
6.11	Tube material	Seamless copper tubes			
6.12	Tube diameter, thickness and length	Vendor to specify			
6.13	Number of tubes	Vendor to specify			
6.14	Shell Diameter and length (mm)	Vendor to specify			
6.15	Number of Passes	Vendor to specify			
6.16	Fouling factor	Vendor to specify			

Sl. No.	Description	Specified/To be confirmed by vendor	Qty	Offered	Deviations
6.17	Condenser coil arrangement	Internally grooved type, arranged in staggered rows & are mechanically expanded into hydrophilic super slit aluminium fins having self-spacing collars to give superior heat transfer efficiency.			
6.18	Air Flow rate	Vendor to specify			
6.19	Number of fans	Vendor to specify			
6.20	Fans	Dynamically and statically balanced helicoids fans, direct drive must be installed.			
6.21	Class of Protection	Vendor to specify			
6.22	Safety Devices	The condenser should be provided with all necessary safety devices and vendor should list down the same.			
6.23	Evaporator	Evaporator should have a built-in distributor for feeding refrigerant evenly under the tube bundle to produce a uniform boiling action and baffle plates shall ensure vapour separation. Vendor to confirm			
6.24	Water heads	Should be of carbon steel and designed for easy removal for mechanical tube-cleaning and/ or tube removal. Vendor to confirm			
6.25	Number of passes in Water head	Vendor to specify			
6.26	Standard accessories	Pressure relief valve, purge valve, angle relief valve at liquid refrigerant outlet and drain connections to be provided. Vendor to confirm			
Item 07	Specification of Refrigerant Piping				
7.10	Material of Refrigerant pipe lines	Hard copper tubes Vendor to confirm			
7.11	Refrigeration accessories	Hand-shutoff valves with charging port, hygroscopic liquid sight glass, solenoid valve, flash economiser and modulating refrigerant expansion devices and etc. to be provided			
7.12	Refrigerant control system	The modulating refrigerant control system should be provided to optimise efficiency by restricting the flow of refrigerant vapour in condenser from entering the vapour at reduced load, by directly modulating a motorized refrigerant valve in the liquid line entering the evaporator. In addition, the refrigerant control system shall measure the level of liquid refrigerant in the flooded evaporator and restrict refrigerant flow entering the evaporator upon a rise in the level protecting the compressor from slugging liquid refrigerant. Vendor to confirm			

Sl. No.	Description	Specified/To be confirmed by vendor	Qty	Offered	Deviations
7.13	Piping design pressure	The refrigerant piping shall be designed for minimum 20kg/cm ² Nitrogen pressure. Vendor to confirm			
7.14	Insulation	The cooler and suction line shall be factory insulated with adequate thickness of foam rubber or equivalent insulating material to prevent condensation. The entire suction line and liquid line between the expansion valve and cooler shall be insulated with flexible closed shell insulation. Vendor to confirm			
Item 08	CHILLED WATER PIPING				
8.10	Supply , Installation , Testing and Commissioning of MS 'C' Class chilled water piping with 50 mm thick Thermacol section insulation above wrapped with poly sheet & Aluminium cladding including necessary supports, fittings, flanges, etc. as per the specifications.	Vendor to confirm			
Item 09	Specification of Air handling units				
9.10	Type of flow	Vertical flow type			
9.11	Mounting	Floor mounting			
9.12	Capacity	Vendor to confirm			
9.13	Quantity	2 No's(2000CFM - 1 No & 4000 CFM - 1 No) Vendor to confirm	2 No's		
9.14	Type of Casing	Double Skin Construction with Min 50 mm thick PUF insulation			
9.15	Inner skin & Outer skin material & thickness	Vendor to specify			
9.16	Pre Filter section	The filters shall be arranged to suit the AHU configuration in frame and all mounted directly on AHU for easy removal			
9.17	Maximum face velocity across prefilters	Vendor to specify			
9.18	Cooling Coil Section	Should consist cooling coil made up of copper tube with mechanically bonded aluminium fins.			
9.19	Thickness of copper coil	Vendor to specify			
9.20	Number of cooling coil rows	Vendor to specify			
9.21	Fin spacing	Vendor to specify			
9.22	Drain Pan	Drain pans (thermally insulated) are to be provided for cooling coil. Drain Pan shall be made of minimum 16G G.I sheet			
9.23	Maximum Face velocity across cooling coil	Vendor to specify			
9.24	Maximum water pressure drop across the coil	Vendor to specify			

Sl. No.	Description	Specified/To be confirmed by vendor	Qty	Offered	Deviations
9.25	Maximum water velocity through coil	Vendor to specify			
9.26	Type of fan	Should be centrifugal, forward curved, multi-blade double inlet double width type.			
9.27	Number of fans	Vendor to specify			
9.28	Fan shaft power & Fan rpm	Vendor to specify			
9.29	Fan motor rating kW (As per IS Standard)	Vendor to specify			
9.30	Fan outlet velocity (max)	Vendor to specify			
9.31	Dampers	Vendor to specify			
9.32	Micro filter	Vendor to specify			
Item 10	Fan Coil units				
10.10	Fan Coil units: Fan coil units with all std.Fittings 1.5 TR - 7 No's,	Vendor to confirm	7 No's		
10.11	Filter Box with micron Filter - 2 Sets	Vendor to confirm	2 sets		
Item 11	Air Distribution System				
11.10	Interconnecting ducts from existing duct to mouth piece of new AHU and Supply & fixing of canvass connection and mouth damper is under vendor scope	Vendor to confirm			
Item 12	Specification of Rigid Frame Work				
12.10	Framework details	The framework comprises an assembly of extruded Double Wall Anodized Aluminium Profiles frame and imported Peralluman plastic or aluminium corner joints			
Item 13	Valves and Fittings				
13.10	Supply, Installation, Testing and commissioning of 3 way motorised modulating valve with insulation and all necessary fittings and flanges and fasteners				
	Type of Valve	Vendor to specify			
	Material construction	Vendor to specify			
	Size	Vendor to specify			
	Quantity	Vendor to specify			

Sl. No.	Description	Specified/To be confirmed by vendor	Qty	Offered	Deviations
13.20	Supply, Installation , Testing and commissioning of balancing valve for chilled water pipe line inlet and outlet with insulation and all necessary fittings				
	Type of Valve	Vendor to specify			
	Material construction	Vendor to specify			
	Size	Vendor to specify			
	Quantity	Vendor to specify			
13.30	Supply, Installation , Testing and commissioning of shut off butterfly valves with insulation and all necessary fittings , flanges and fasteners				
	Type of Valve	Vendor to specify			
	Material construction	Vendor to specify			
	Size	Vendor to specify			
	Quantity	Vendor to specify			
13.40	Supply, Installation , Testing and commissioning of non return valves with insulation and all necessary fittings , flanges and fasteners				
	Type of Valve	Vendor to specify			
	Material construction	Vendor to specify			
	Size	Vendor to specify			
	Quantity	Vendor to specify			
13.50	Supply, Installation , Testing and commissioning of Y -strainer with insulation and all necessary fittings , flanges and fasteners				
	Size	Vendor to specify			
	Quantity	Vendor to specify			
	SITC of flexible connections at inlet and outlet of chillers and pumps with counter flanges, bolt & nuts, gasket, etc.	Vendor to confirm			
13.60	Supply, Installation , Testing and commissioning of other accessories in chilled water piping.				
	Dial type imported thermometers with thermowell and mounting box.	Vendor to confirm			
	Dial pressure gauge with isolating gate valve / cock with insulation	Vendor to confirm			
	SITC of Ball valve without strainer for FCU's	Vendor to confirm			
	SITC of Ball valve with strainer for FCU's	Vendor to confirm			
	Ball valves for drain, etc.	Vendor to confirm			
	Automatic air vents with ball valve	Vendor to confirm			
Item 14	SITC of PVC Chilled water make up water tank including float valve				

Sl. No.	Description	Specified/To be confirmed by vendor	Qty	Offered	Deviations
14.10	Capacity (500 Litre)	Vendor to confirm	1 No		
Item 15	Safety System for the chiller unit				
15.10	Each chiller unit should be equipped with all necessary components and in conjunction with the control system should provide the unit with protection against the following a) Loss of refrigerant charge b) Reverse rotation c) Low chilled water temperature d) Current imbalance e) Compressor thermal overload f) Automatic compressor unloading in case of excessive air temperature g) High Pressure i) Electrical over load j) Loss of phase/ Phase reversal k) Fan motors should protected by individual circuit breaker	Vendor to confirm			
Item 16	Specification of Control Panels				
16.10	The control panel should be Microprocessor based provided with all operating and safety controls. The same shall be preassembled, Wired and mounted on the unit. All the gauges mounted on the panel shall be clearly visible. The microcontroller to have following features viz. 1. Memory Backup 2. Digital control of temperature 3. Auto restart 4. Built in time delay for compressors 5. Single phasing/phase reversal /overload/short circuit protection. 6. Temperature setting control to decimal 0.1C 7. Operation in manual & auto mode. 8. Fault Failures Display. The above features are only indicative	Vendor to confirm			

Sl. No.	Description	Specified/To be confirmed by vendor	Qty	Offered	Deviations
	Thermostatic control arrangement for control of temperature, Safety controls as indicated earlier, thermostatic expansion valves control with solenoid valves for pump down cycle etc. shall be considered by the bidders. The loading and unloading of cylinder depending on load shall be through solid-state temperature controller	Vendor to confirm			
Item 16	SUPPORTS FOR PIPES				
16.10	All supports for pipes from ceiling shall be pre fabricated type epoxy painted MS member with GI down rod having adequate strength. All piping supports at terrace shall be with brick saddles duly finished with sand cement plaster. Otherwise the supports shall be fabricated out of G.I. / epoxy painted M.S. members having adequate strength. However the vendor shall submit proper drawings for supporting arrangement for approval prior to installation.	Vendor to confirm			
Item 17	ELECTRICAL CABLING WORK				
17.10	Reconditoning of Electrical Cabling	Vendor to specify			
17.10	The vendor has to check condition of all electric cabling including cables, terminals, isolators, breakers and all other accessories and should be replaced with new and branded items of equivalent capacity, wherever required	Vendor to specify			
17.11	Size of Cable	Vendor to specify			
17.12	Length of Cable	Vendor to specify			
Item 18	EARTHING				
18.10	The vendor has to check condition of all Earthing wires and should be replaced with new and branded items of equivalent capacity, wherever required	Vendor to specify			
18.11	Providing and fixing 25mm x 5mm GI strip on surface or in recess for connections etc.,	Vendor to specify			

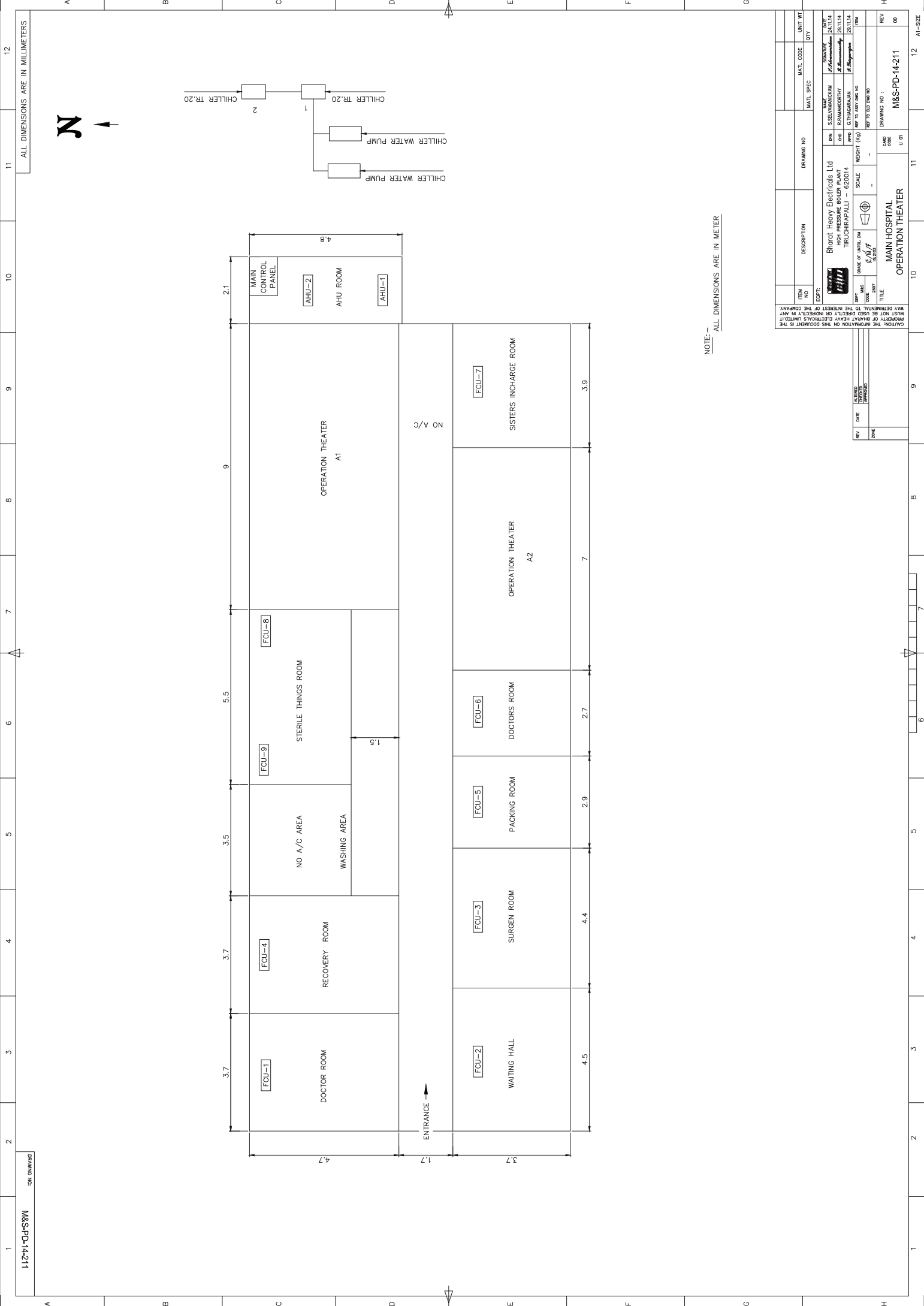
Sl. No.	Description	Specified/To be confirmed by vendor	Qty	Offered	Deviations
18.12	Providing and fixing 6SWG dia GI wire on surface or in recess for loop earthing along with the existing surface/recessed conduit/sub main wiring cable	Vendor to specify			
Item 19	INSPECTION & TESTING				
19.10	<p>Inspection and testing shall be conducted in a manner satisfactory to and shall be subject to approval from BHEL. Detailed procedure for the tests to be performed should be approved by BHEL. The supplier has to submit a detailed quality Assurance Procedure for approval of BHEL before proceeding with the manufacturing of the chiller unit. The inspection shall be carried out by BHEL at vendor site. Following approvals are necessary before proceeding with manufacturing of the chiller unit:</p> <p>a) QAP b) Design Drawings c) Design calculation which should include thermal design, flow design</p> <p>Following tests shall be carried out by BHEL during inspection of chiller at the supplier premises before despatch of material.</p> <p>d) Thermal Load test e) Material Test certificates of part components related to QA</p>	Vendor to confirm			
Item 20	Installation & Commissioning				

Sl. No.	Description	Specified/To be confirmed by vendor	Qty	Offered	Deviations
20.10	The supplier shall install and commission the Air cooled Air conditioning system which includes a) Positioning and installation of the all the equipment at their proper place with due care. The required material handling equipments shall be provided by BHEL b) Total inter connecting piping and insulation work including those outside the base frames of supplied equipment. The required material like pipe, insulation, valves etc. and joining of the same (welded/flanged) is in the scope of supplier. c) Top up charge of refrigerant.	Vendor to confirm			
20.11	Erecting electrical, mechanical and instrumentation items will be done by the vendor under the supervision of M/s BHEL.	Vendor to confirm			
Item 21	GENERAL POINTS				
21.10	All technical specifications, drawings, Heat Calculation details and product catalogue for Air conditioning system to be submitted with offer.	Vendor to provide			
21.11	The air conditioning contractor shall take all necessary precautions to have minimum noise generation and its transmission. Minimum vibration as permitted by ISO standard shall be followed.	Vendor to confirm			
21.12	Delivery Duration - 12 to 16 Weeks	Vendor to confirm			
21.13	Pre-despatch inspection at vendor site is required and the inspection will be done by BHEL.	Vendor to confirm			
21.14	All equipments supplied should have a warranty of 12 months from the date of commissioning	Vendor to confirm			
21.15	All the components should have technical details marked in a name plate	Vendor to confirm			
21.16	One set complete recommended spares should be supplied	vendor to confirm			

Sl. No.	Description	Specified/To be confirmed by vendor	Qty	Offered	Deviations
21.17	Minimum 5 years required for supporting supply of critical spares and technical assistance	Vendor to confirm			
21.18	For all the components supplied and for the full system, user manual (including wiring diagrams) is to be provided (one softcopy + three hard copies)	Vendor to confirm			
21.19	Erection and commissioning will be under the scope of vendor.	Vendor to confirm			
21.20	Eligibility: i) The vendor should have supplied Air conditioning system of similar or above capacity and should provide required documents with a letter of satisfactory working from a reputed company.	Vendor to provide			
21.21	Vendor has to compulsorily visit the site/BHEL before quoting for the same to understand the field requirement	Vendor to confirm			
21.22	Annual Maintenance Contract	The supplier shall submit an offer for AMC of the offered chiller for two years after the completion of warranty period.			

PART-C BOQ			
SCOPE OF WORK : OPERATION THEATRE AC PLANT FOR HOSPITAL			
SL.NO.	Description	Unit	Quantity
1	Supply, installation, testing & commissioning of of 20 TR nominal capacity Air-cooled chiller	Nos	2
2	Supply, installation, testing & commissioning of 2000 CFM-1 No & 4000 CFM - 1 No, floor mounted air handling unit	Nos	2
3	Supply, installation, testing & commissioning of 1.5TR Fan coil unit.	Nos	7
4	Supply, installation, testing & commissioning of monoblock centrifugal type chilled water pump	Nos	2
5	Supply & laying of chilled water piping using M.S heavy duty pipes with necessary accessories like angle support with anchor fasteners with insulation using expanded polystyrene finished with GI Cladding, as follows,		
6	100mm dia with 50mm thick EPS Insulation	Mt	Actual Qty
7	80mm dia with 50mm thick EPS Insulation	Mt	Actual Qty
8	65mm dia with 50mm thick EPS Insulation	Mt	Actual Qty
9	50mm dia with 50mm thick EPS Insulation	Mt	Actual Qty
10	32mm dia with 50mm thick EPS Insulation	Mt	Actual Qty
11	25mm dia with 50mm thick EPS Insulation	Mt	Actual Qty
12	Supply & installation of 3-way modulating valve with actuator and thermostat for AHU units with insulation, 50mm dia	Nos	Actual Qty
13	Supply & installation of 3-way modulating valve with actuator and thermostat for FCU units with insulation,25mm dia	Nos	Actual Qty
14	Supply & installation of manually operated shut-off butterfly valves for chilled water in and out with insulation, as follows,		
15	100mm dia - For Chiller & Pump	Nos	Actual Qty
16	50mm dia - AHU Units	Nos	Actual Qty
17	25mm dia - FCU Units	Nos	Actual Qty
18	Supply & installation of non-return valve for new chilled water pump, as follows,		
19	100mm dia	Nos	Actual Qty

SL.NO.	Description	Unit	Quantity
20	Supply & installation of Y-Strainer for new chilled water pump, as follows,		
21	100mm dia	Nos	Actual Qty
22	Supply & installation of 100mm dial type Water pressure gauge complete with gauge valve, mounting,fitting for AHU inlet & outlets	Nos	Actual Qty
23	Supply & installation of 100mm dial type thermometer	Nos	Actual Qty
24	Supply & installation of flexible canvas connection for AHU mouth	Nos	Actual Qty
25	Supply & installation of volume control damper made out of 18 SWG GI material	Nos	Actual Qty
26	Supply, fabrication & erection of GI ducting for interconnecting the ducting from new AHU units to the existing duct with necessary supports, fasteners etc. as follows,		
27	18 SWG	Sqmt	Actual Qty
28	20 SWG	Sqmt	Actual Qty
29	22 SWG	Sqmt	Actual Qty
30	Supply and installation of acoustic insulation for GI ducting using 12mm thick rigid board, finished with aluminum perforated sheet	Sqmt	Actual Qty
31	ELECTRICAL CABLING:		
32	Supply & laying of incoming cable from isolator to chiller using 3.5 core X 100 sq.mm Armored aluminum cable	Mt	Actual Qty
33	Supply & laying of incoming cable from isolator to chilled water pump using 4 core X 2.5 sq.mm Armored aluminum cable	Mt	Actual Qty
34	Supply & laying of incoming cable from isolator to AHU Units using 4 core X 16 sq.mm Armored aluminum cable	Mt	Actual Qty
35	Supply & fixing of end termination for chiller incoming cable	Nos	Actual Qty
36	Supply & fixing of end termination for chilled water pump incoming cable	Nos	Actual Qty
37	Supply & fixing of end termination for AHU units incoming cable	Nos	Actual Qty
38	Supply & fixing of 25mm X 6 mm GI heavy duty flat earthing for chiller	Mt	Actual Qty
39	Supply & fixing of 8SWG GI earthing for pump & AHU units	Mt	Actual Qty
40	Supply & installation of MS Structural work for HVAC equipments & piping work	Kg	Actual Qty



NOTE: - ALL DIMENSIONS ARE IN METER

ITEM NO	DESCRIPTION	DRAWING NO	MATL SPEC	MATL CODE	UNIT	WT
EXPT:						
1	FCU-1					
2	FCU-2					
3	FCU-3					
4	FCU-4					
5	FCU-5					
6	FCU-6					
7	FCU-7					
8	FCU-8					
9	AHU-1					
10	AHU-2					
11	CHILLER TR.20					
12	CHILLER TR.20					

Barat Heavy Electricals Ltd HIGH PRESSURE BOILER PLANT TIRUCHIRAPALLI - 622014 REF TO ASSY Dwg NO REF TO BOILER Dwg NO		DATE: 24.11.14 DESIGNED BY: S.SELVAMANGAM CHECKED BY: R.PANAMMOORTHY APPROVED BY: G.THIRUGANAN SCALE: 1/4" = 1'-0" WEIGHT (K.G): REF TO ASSY Dwg NO: REF TO BOILER Dwg NO:
REVISIONS: NO. DATE BY 1 15/11/14	TITLE: MAIN HOSPITAL OPERATION THEATER	DRAWING NO.: M&S-PD-14-211
PROJECT NO.: SHEET NO.: OF:	DRAWING NO.: M&S-PD-14-211	REV: 00

11 10 9 8 7 6 5 4 3 2 1

A B C D E F G H

12 11 10 9 8 7 6 5 4 3 2 1

M&S-PD-14-211

ON DRAWING



BHARAT HEAVY ELECTRICALS LIMITED TIRUCHIRAPALLI

CAPITAL PURCHASE

Annexure-A

ACCEPTANCE OF COMMERCIAL TERMS AND CONDITIONS BY THE VENDORS.

(This should be essentially filled in and sent along with the techno-commercial offer without fail. If this check list is not filled and submitted along with techno-commercial offer (Part I) or if the vendor does not confirm acceptance to the terms and conditions proposed, BHEL reserves the right to reject such offer)

CHECK-LIST FOR VENDORS

SI No	DESCRIPTION
1.	<p>The Bidders shall submit the offer in THREE INNER ENVELOPES as indicated below which shall be sealed in one outer envelope.</p> <ul style="list-style-type: none"> ❖ Envelope I: This sealed envelope should be clearly marked as “ Part I: EMD Amount” and must contain the required EMD amount of Rs. 1,00,000/- EMD shall be payable as per the instructions, otherwise the offer will not be considered. Pay order / DD No / Cash receipt no. & date should be furnished separately. ❖ Envelope II: This sealed envelope should contain all the copies of technical bid together with un-priced commercial bid. This envelope should be clearly marked “Part II - Technical and Commercial bid”, indicating Enquiry No., Due Date and Address & Reference of the Bidder. ❖ Envelope III: This sealed envelope should contain price details. This envelope should be clearly marked “Part III - Price bid”, indicating Enquiry No., Due Date and Address & Reference of the Bidder. This part should contain the schedule of price particulars and must be co-related to the technical details provided in Part II. <p>All the three envelopes (Part I,II & III) shall be put in one cover, duly sealed, super scribing as “Part I ,Part II and Part III of Enquiry No., due date of opening” and the address and reference of the Bidder. The offer received without the above guidelines, will not be considered for opening..</p> <p>The above offer should reach this office on or before the due date by 14.00 Hrs (IST). Late offers will not be considered. Tender should not be addressed to any Individual's name but only by designation to:</p> <p style="text-align: center;">Sr. MGR / CAPITAL PURCHASE / MFG 24 Building/IVth Floor BHARAT HEAVY ELECTRICALS LIMITED HIGH PRESSURE BOILER PLANT TIRUCHIRAPALLI - 620 014 TAMIL NADU, INDIA</p> <p>Tenders should be free from CORRECTIONS AND ERASURES, Corrections if any, must be attested. All amounts shall be indicated both in words as well as in figures. In case of any difference between amount quoted in words and figures, amount quoted in words shall prevail.</p> <p>Offers should be in ENGLISH and accompanied by detailed technical literature, catalogue and detailed dimensional drawings in ENGLISH or otherwise, the offers will not be considered.</p>
2.	<p><u>OPENING OF TENDERS</u></p> <p>The part I – EMD would be opened on the tender opening date and if EMD is not furnished the offer will be duly rejected.</p> <p>The Part II - Technical & commercial bid would be opened on the Tender opening date.</p> <p>Part III - Price bid of technically suitable Bidders alone would be opened after complete evaluation of Part-II. BHEL reserves the right to go for a Reverse Auction (RA) instead of opening the submitted sealed bid, which will be decided after technical evaluation. Information and general terms and conditions covering RA are given in this Annexure-A (Point no.18). Date and time of Price Bid (Part-III) opening / RA conducting date shall be intimated to the technically and commercially acceptable bidders only. Clarifications if any required by BHEL for Technical evaluation would be sought from bidders before opening of Part III - price bid/ (RA).</p>
3.	<p>Taxes and Duties :</p> <p>All Taxes and Duties payable as extra to the quoted price should be specifically stated in offers along with CST & TIN No / Tariff No. etc., failing which the purchaser will not be liable for payment of such Taxes and Duties. Our TIN No. 33243560005, TNGST No. 3560005, CST. No. 239383 Dt. 11-06-1991 & BHEL ECC No. AAACB4146PXM012, Service Tax Reg No (STC)- AAACB4146PST006. Assessment circle Tiruverambur.</p> <p>Convat credit & VAT credit (for Indian Bidders only): the quotation must indicate Tariff item number and rate of Excise Duty applicable. The original Excise Duty Gate Pass will be required to be furnished in case Excise Duty is applicable. If the bidder is availing Convat credit for his input materials, the effect of proforma credit should be passed on to BHEL.</p> <p>Income Tax applicable Any service charges payable towards supervision of E&C, training, performance prove-out etc., will be released after deduction of Income Tax as per Indian Income Tax Act / as per the Govt. of India rules and TDS certificate will be issued by BHEL for such deductions. Applicable service tax on E&C charges will be payable extra. The liability of depositing the same to the Govt. will be of the supplier.</p>

4. DETAILS OF EARNEST MONEY DEPOSIT & SECURITY DEPOSIT

Earnest Money is to be paid by the Tenderer either in Cash (as permissible under Income Tax Act), Pay Order (or) Demand Draft drawn in favour of “**Bharat Heavy Electricals Ltd, Tiruchirapalli**” payable at **Tiruchirapalli**.

EMD by the Tenderer will be forfeited as per Tender Documents if

- After opening the Tender, the Tenderer revokes his Tender within the validity period or increases his earlier quoted rates.
- The Tenderer does not commence the work within the period as per LOI/Contract. (In case the LOI/Contract is silent in this regard then within 15 days after award of the Contract).

EMD given by all unsuccessful Tenderers shall be refunded normally within 15 days of acceptance of award of work by the successful Tenderer. EMD shall not carry any interest.

SECURITY DEPOSIT

The successful Tenderer should pay Security Deposit before start of the work and the Rate of Security Deposit will be as below.

Value of Contract	Rate of Security Deposit
Upto Rs.10 Lakhs	10%
Above Rs.10 lakhs and upto Rs.50 lakhs	Rs.1 Lakh + 7.5% of the amount exceeding Rs.10 Lakhs
Above Rs.50 lakhs	Rs.4 Lakhs + 5% of the amount exceeding Rs.50 Lakhs

Security Deposit may be furnished in any one of the following forms.

- i) Cash (as permissible under the Income Tax Act)
- ii) Pay Order, Demand Draft in favour of **Bharat Heavy Electricals Limited, Tiruchirapalli** payable at **Tiruchirapalli**
- iii) Local Cheques of Scheduled Banks, subject to realization.
- iv) Securities available from Post Offices such as National Savings Certificates, Kisan Vikas Patras etc (Certificate should be held in the name of Contractor furnishing the security and duly pledged in favour of BHEL and discharged on the back)
- v) Bank Guarantee from Scheduled banks / Public Financial Institutions as defined in the Companies Act subject to a maximum of 50% of the total Security Deposit value. The balance 50% has to be remitted either by cash or in the other form of security. The Bank Guarantee format should have the approval of BHEL.
- vi) Fixed Deposit Receipt issued by Scheduled banks / Public Financial Institutions as defined in the Companies Act. The FDR should be in the name of the Contractor, A/C BHEL, duly discharged on the back.
- vii) Security Deposit will also be recovered at the rate of 10% from the running bills. However in such cases at least 50% of Security Deposit shall be paid by the Contractor before start of the work and the balance 50% will be recovered from the running bills.
- viii) EMD of the successful Tenderer shall be converted and adjusted against Security Deposit.

Note: Acceptance of security Deposit against SI.no.(iv) and (vi) above will be subject to hypothecation or endorsement on the documents in favour of BHEL. However BHEL will not be liable or responsible in any manner for the collection of interest or renewal of the documents or in any other matter connected therewith.

Security deposit shall not carry any interest. Security Deposit shall not be refunded to the Contractor except in accordance with the terms of the Contract

Security Deposit shall be payable by the successful vendors as per the above instructions Security Deposit will be refunded within 30 days after successful completion of Contract by the successful vendor.

5. Performance Bank Guarantee (PBG): The Bidder, in the event of an order, should furnish a Bank Guarantee from an Indian Bank approved by BHEL, at no extra cost in a format prescribed by BHEL, along with the order, for an amount equivalent to **10% (Ten percent)** of the value of the contract. The PBG shall be valid for period of 18 months from the date of dispatch or **12 months** from the date of receipt / acceptance / commissioning of the equipment at BHEL, Tiruchi whichever is more, with a claim period of two months.

The Performance Bank Guarantee shall be obtained from any one of the following banks which is a member Bank in our consortium of Banks.

LIST OF CONSORTIUM BANKS
 1.DEUTSCHE BANK 2.HDFC BANK 3.ANZ GRINDLAYS BANK 4.CITI BANK 5.STANDARD CHARTERED BANK 6.BANK OF AMERICA 7.ABN AMRO BANK 8.IDBI LTD 9.ICICI BANK LTD 10.THE HONGKONG AND SHANGHAI BANKING CORPORATION LTD.

LIST OF NATIONALISED BANKS
 1.ALLAHABAD BANK 2.ANDHRA BANK 3.BANK OF INDIA 4.BANK OF BARODA 5.BANK OF MAHARASTRA 6.BHARATH OVERSEAS BANK 7.CANARA BANK 8.CENTRAL BANK OF INDIA 9.CORPORATION BANK 10.DENA BANK 11.INDIAN BANK 12.INDIAN OVERSEAS BANK 13.OREINTAL BANK OF COMMERCE 14.PUNJAB NATIONAL BANK 15.PUNJAB & SIND BANK 16.STATE BANK OF INDIA 17.STATE BANK OF TRAVANCORE 18.STATE BANK OF MYSORE 19.STATE BANK OF BIKANER & JAIPUR 20.STATE BANK OF HYDERABAD 21.STATE BANK OF PATIALA 22.STATE BANK OF MAHARASTRA 23.STATE BANK OF SOURASTRA(SBI-13.09.08) 24.SYNDICATE BANK 25.UCO BANK 26.UNION BANK OF INDIA 27.UNITED BANK OF INDIA 28.VIJAYA BANK

If PBG is issued by a Foreign counter part of the BHEL consortium Indian Bank, in case of claim against the PBG , it will be lodged in any one of the Indian counters of the Foreign Bank which issued the PBG.

Vendor's confirmation

	No row shall be left blank. Please indicate NA, in case the item is “not applicable”	Vendor's confirmation
6.	Validity: Validity of the offer should be 180 days from the date of tender opening.	
7.	Release of Purchase Order: <ul style="list-style-type: none"> ➤ Purchase Orders (separate for supply and service portion if applicable) will be released on the successful vendor (L1 vendor) ➤ The retrofitting works are composite in nature and cannot be split-up to more than one vendor. Hence the entire work will be awarded to only lowest bidder of the tender. Work cannot be split-up and given to MSME vendor if they are L2 or above ranking in the tender. 	
8.	Payment terms for Supply Portion 80% Payment after receipt and acceptance of material and balance 20% within 45-90 days after receipt, acceptance and commissioning of supply material against submission of 10%PBG for order value.	
	Erection & Commissioning Portion (if applicable only): 100% of the Erection / commissioning charges (in case contract involves erection /commissioning) shall be paid only on completion of such erection / commissioning at BHEL	
	Any deviation in the above payment term will attract loading as mentioned below. “Base rate of SBI (as applicable on the date of bid opening. Techno-commercial bid opening in case of two part bids) + 6% shall be considered for loading for the period of relaxation sought by bidders.	
9.	Liquidated damages (LD): The delivery of the goods specified in the purchase order should be made within the time prescribed. LD for delay in ‘Supply’ and/or ‘E&C’ will be applicable to the delays attributed to vendor. LD will be considered separately for ‘Delivery’ and ‘E&C’. Where the seller supplies or dispatches the goods, beyond the delivery period Liquidated damages shall be applicable 0.5% of the total order value per week or part thereof subject to a maximum of 10% of the total order value. The rate of LD for delayed E&C shall be @ 0.5% per week of delay of total PO value (Supply + E&C) in E&C subject to a maximum of 10% of total PO value (Supply + E&C). For staggered delivery schedule, LD shall be 0.5% of the undelivered portion per week of the delay or part thereof subject to a maximum of 10% of the total order value. Any deviation from the above LD clause, loading will be applied to the extent to which it is not agreed by the bidder (at offered value). For the purpose of Imposing LD, the FOB delivery (B/L date) shall be considered	
10.	Risk Purchase: Alternatively the purchaser at his option will be entitled to terminate the contract and to purchase elsewhere at the risk and cost of the seller either the whole of the goods or any part which the supplier has failed to deliver or dispatch within the time stipulated as aforesaid or if the same were not available from the best and the nearest available substitute. The supplier shall be liable for any loss which the Purchaser may sustain by reason of such risk purchases.	
11.	Delivery terms and evaluation process: Indian Bidders should submit their offer on FOR BHEL, Tiruchy basis . Packing & Forwarding and Freight & Insurance charges from works to BHEL, Tiruchy to be indicated separately if extra from basic rate. Applicable % of ED & Sales Tax , Commissioning Charges should be clearly indicated. Evaluation of offers shall be on the basis of delivered cost (Net cash outflow to BHEL)	
12.	Guarantee: Vendors shall provide a guarantee for a period of 12 months from the date of commissioning of the equipment or 18 months from date of supply, whichever is earlier. The date of B/L or AWB shall be taken as the date of supply.Also, a PBG has to be given which shall cover the guarantee period (with additional 2 months as claim period). Normally No deviation permitted and the deviated offers are liable for rejection.	
13.	Short shipment / Warranty replacement: In case of any short shipment in the main equipment / spares, Customs Duty levied on such supplies, shall be borne by the supplier. Any warranty replacement during the warrantee period shall be on FOR, BHEL, Tiruchirappalli, basis.	
14.	Inspection & Testing: All goods shall be subject to inspection by BHEL or its authorized representatives at supplier's works or at BHEL stores or at any other place in India indicated by BHEL as the case may be. The supplier will not charge for the facilities provided for inspection of goods. In case of machine tools, the machine would be inspected and proved at supplier's works prior to dispatch however, final inspection and acceptance of the machine will be carried after installation of the machine at BHEL, Tiruchirappalli.	

15.	<p>Test certificates / Operating and Maintenance manuals : The Bidders shall clearly mention in their offer, that Test Certificates and Operating Maintenance Manuals, etc., as called for in the Technical Specification, in the required number of copies will be provided at no extra cost.</p>	
16.	<p>Payment through Bank is not preferred. In case of Payment through Bank is opted by Supplier, BHEL prefers documents submission through bank with copy of LR and door delivery of Goods to Site/Stores with Consignee copy attached. In this case Loading will be 3% on the offered value. Offers of indigenous Suppliers with payment terms as LC/Advance Payment are liable for rejection.</p>	
17.	<p>BHEL will consider the ranking after the loading is applied as referred above wherever deviations are observed.</p>	
18.	<p>Reverse Auction (RA): BHEL reserves the right to conduct on-line internet Reverse Auction ie. ONLINE BIDDING (THROUGH A SERVICE PROVIDER) for finalizing the Tender. This decision will be communicated to the technically qualified vendors after technical evaluation. Details / General terms / guidelines for conduct of RA are shown below Vendors are requested to confirm their acceptance for BHEL proceeding with RA route for finalization of the enquiry.</p> <ol style="list-style-type: none"> 1. For the proposed reverse auction, technically and commercially acceptable bidders only shall be eligible to participate. 2. BHEL will engage the services of a service provider who will provide all necessary training and assistance before commencement of on line bidding on internet. 3. BHEL will inform the vendor in writing in case of reverse auction, the details of Service Provider to enable them to contact & get trained. 4. Business rules like event date, time, start price, bid decrement, extensions etc. also will be communicated through service provider for compliance. 5. Vendors have to fax the Compliance form in the prescribed format (provided by Service provider) before start of Reverse auction. Without this, the vendor will not be eligible to participate in the event. 6. BHEL will provide the calculation sheet (e.g., EXCEL sheet) which will help to arrive at "Total Cost to BHEL" like Packing & forwarding charges, Taxes and Duties, Freight charges, Insurance, Service Tax for Services and loading factors (for non-compliance to BHEL standard Commercial terms & conditions) for each of the vendor to enable them to fill-in the price and keep it ready for keying in during the Auction 7. Reverse auction will be conducted on scheduled date & time. 8. At the end of Reverse Auction event, the lowest bidder value will be known on the network. 9. The lowest bidder has to Fax/e-mail the duly signed Filled-in prescribed format as provided on case-to-case basis to BHEL through Service provider within 24 hours of Auction without fail. 10. Any variation between the on-line bid value and the signed document will be considered as sabotaging the tender process and will invite disqualification of vendor to conduct business with BHEL as per prevailing procedure. 11. In case BHEL decides not to go for Reverse Auction procedure for this tender enquiry, the Price Bids and price impacts, if any, already submitted and available with BHEL shall be opened as per BHEL's standard practice. 12. BHEL reserves the right to negotiate if need be, with the "L1" vendor of the Reverse Auction 13. <u>BHEL reserves the right not to consider offers from vendors not complying with the RA process for finalization of the enquiry.</u> 14. If the Bidder or any of his representatives are found to be involved in Price manipulation/ cartel formation of any kind, directly or indirectly by communicating with other bidders, action as per extant BHEL guidelines, shall be initiated by BHEL and the results of the RA scrapped/ aborted. 15. In case BHEL decides to go for reverse auction, the H1 bidder(s) (whose quote is highest in online sealed bid) may not be allowed to participate in further RA process. 	
19.	<ul style="list-style-type: none"> ➤ Point to point confirmation for the Technical Specification enclosed to be provided. If there are any deviations, the same should be clearly specified. Offers received without confirmation to our specifications will be liable for rejection. If needed additional sheets shall be used. ➤ Equipment offered shall be "New". Re-built / Re-conditioned / Used equipments will not be accepted. Incomplete offers will not be considered for further processing Fixed price: ➤ BHEL reserves its right to reject a tender due to unsatisfactory past performance in the execution of a contract at any of BHEL projects / units. ➤ BHEL shall be at liberty to reject or accept any tender, part or in full, at their own discretion and any such action is not liable for any question or claim against BHEL. ➤ Security Deposit shall be payable as per the instructions furnished in clause no.4. ➤ All Equipments / Services including concerned personnel for carrying out the erection and commissioning of the equipment shall be arranged by the vendor. If any Services are availed from BHEL, it is only on chargeable basis unless otherwise specified. ➤ The vendor shall provide necessary drawings, Test Certificates and Operating Maintenance Manuals etc., as called for in the Technical Specification, in the required number of copies at no extra cost ➤ The Supplier shall arrange for securely protecting and packing the stores to avoid loss or damages during transit. 	

20.	COMPANY DETAILS & CONTACT			
	Full Address of the company for future correspondence.(Copy of address proof & PAN card shall be attached along with Part-II)			
	Company Email ID:		Phone No.:	
	Fax No		Pan No	
	CST /TIN No		Service Tax No.	
	Name of the contact person:		Mobile No.:	
	e-mail ID			
21.	TO BE CONFIRMED BY VENDOR			
	Details of EMD	DD/CR/PO-No.	Dt:	Rs.
	Country of origin:			
	Station of dispatch/Port Of Shipment			
	Delivery Terms (For destination or Ex-works)			
	Packing & Forwarding Charges, if any (in % or Lumpsum) ie. extra from basic rate			
	% of Excise Duty with cess (non-cenvattable)			
	% of TAX (CST/VAT) (TNGST without FORM-17 or CST without C-FORM)			
	Freight & transit insurance charges (if any, in Lumpsum (or) percentage) from Dispatching station to BHEL Tiruchirappalli, (Note:If the delivery terms is Ex Works the materials has to be sent through BHEL approved carrier only, in this case the freight & Insurance will be borne by BHEL)			
	(If applicable only) Erection & commissioning charge is inclusive (or) exclusive on basic rate			
Service tax applicable extra or not				
22.	Delivery from the date of Letter of Intent / Purchase Order. (This should be inclusive of Order acceptance, drawing approval and time period required for receiving materials at BHEL Trichy etc.,)			
	Period for completion of the Retrofitting / Reconditioning (erection & Commissioning) work at BHEL shall be clearly specified in the offer			
23.	Weight & Cubage of package: Approximate Net weight of the total consignment:- Approximate Gross weight of the total consignment: - Approximate volume of the total consignment:-			
	For any queries / clarifications the bidders may contact us through our FAX NO. +91 431 2520719 or through e-mail <pgavictor@bheltry.co.in>			

NOTE:-

- a) Your specific acceptance to our Payment terms, LD, Risk Purchase Clause & Submission of PBG for 10% of the order value are essential for consideration of your offer. Otherwise your offer is liable for rejection.
- b) No row shall be left blank. Please indicate NA, in case the item is “not applicable”

Declaration:-

I/We have gone through and understood the ‘General guidelines & instructions to bidders for submitting offer’ enclosed as a part of the Tender and confirm that our offer has been made in line with the same.

(AFFIX OFFICIAL SEAL HERE)

Signature with date:

Name:

Designation:

Department:

(PLEASE AFFIX YOUR SIGNATURE WITH SEAL ON EACH PAGE)

MODEL PRICE BID FORMAT FOR INDIAN BIDDERS

Enquiry No. & Date:
Bidder's Offer No. & Date:

Sl No	Description of item	Unit (SET /No)	QTY	Rate /Qty in Rs. (excluding of all taxes)	VAT/CST in % (TNGST without FORM-17 or CST without C-FORM)	ED in %	Service Tax in %	Total Value in Rs. (inclusive of all taxes)
	Supply portion							
	Erection & Commissioning (if available in tender scope and exclusive from basic rate)							
	Packing & Forwarding charges (if any) in percentage (or) Lumpsum							
	FOR Dispatching station value in Rs.							
	Percentage of Freight & transit insurance charges, if any (Lumpsum or %) Freight & Insurance charges from Dispatching station to BHEL, Tiruchirappalli (Note:If the delivery terms is Ex Works the materials has to be sent through BHEL approved carrier only, in this case the freight & Insurane will be borne by BHEL)							
	Approximate Net weight of the total consignment							
	Approximate Gross weight of the total consignment							
	Approximate Dimensions of the Consignment							

Indicative Price for AMC contract	In Rs.
Indicative price for AMC of the offered chiller for two years after the completion of warranty period excluding taxes.	

Signature & Seal of Vendor

The price bid should be submitted only as per the above format. No row shall be left blank. Please indicate NA, in case the item is “not applicable”

Certificate by Chartered Accountant on letter head

This is to Certify that M/S
(hereinafter referred to as 'company') having its registered office at
..... is registered under MSMED Act 2006, (Entrepreneur
Memorandum No (Part-II) dtd:.....,
Category: (Micro/Small)). (Copy enclosed).

Further verified from the Books of Accounts that the investment of the company as on
date..... as per MSMED Act 2006 is as follows:

1. **For Manufacturing Enterprises:** Investment in plant and machinery (i.e. original cost excluding land and building and the items specified by the Ministry of Small Scale Industries vide its notification No.S.O.1722(E) dated October 5, 2006 :
Rs.....Lacs
2. **For Service Enterprises:** Investment in equipment (original cost excluding land and building and furniture, fittings and other items not directly related to the service rendered or as may be notified under the MSMED Act, 2006:
Rs.....Lacs

The above investment of Rs.....Lacs is within permissible limit of
Rs.....Lacs forMicro / Small (~~Strike off which is not applicable~~)
Category under MSMED Act 2006.

Date:

(Signature)

Name -

Membership number -

Seal of Chartered Accountant