

GROUND FLOOR PLAN FOR FFPH & WATER TANK

APPROVED BY E.D.ENGG-S/Str & T/L WIDE NOTE SHEET
 Ref:- C/ENGG/CIVL/STD/FDN/M25 Dated 09/02/2012

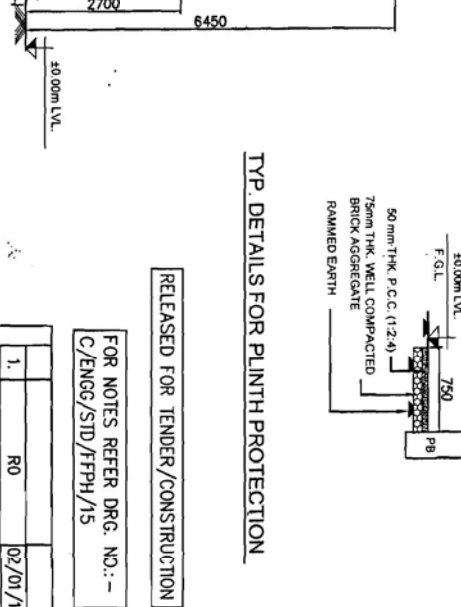
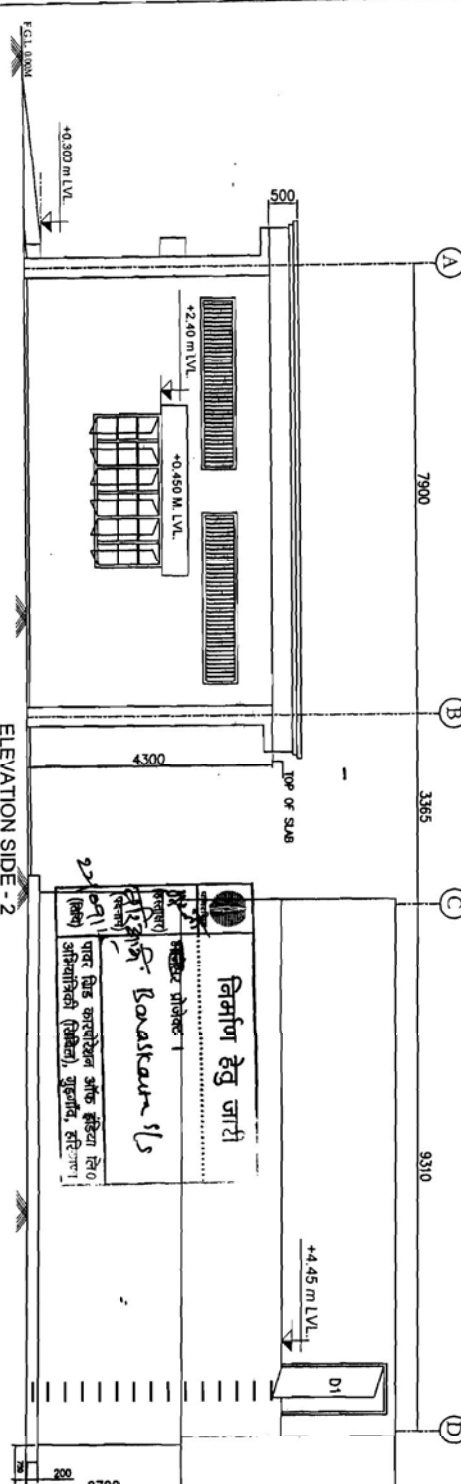
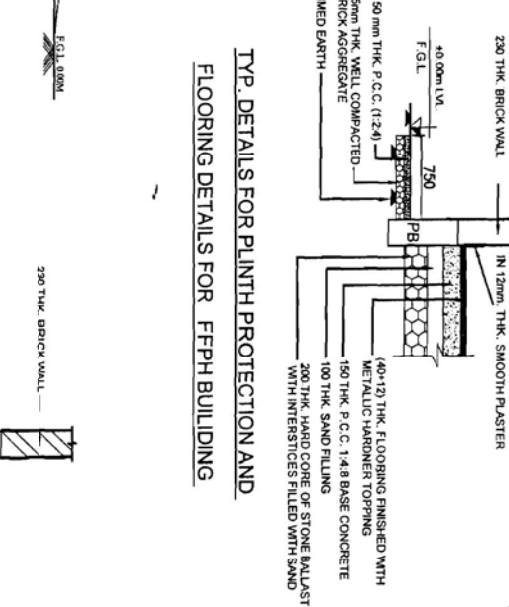
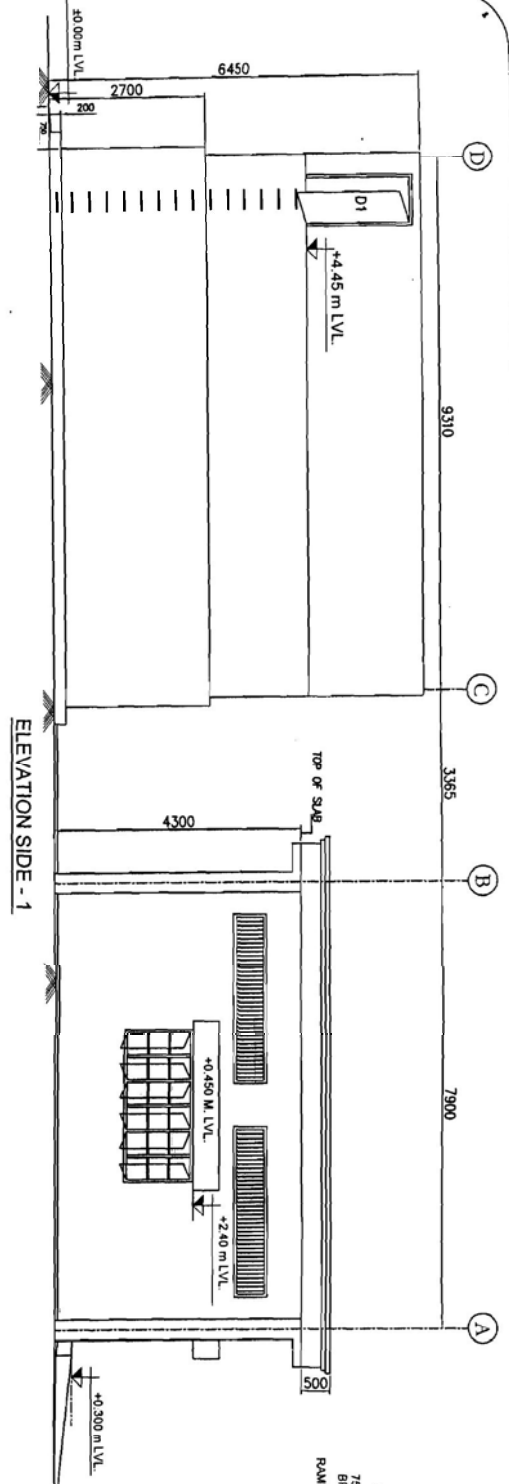
RELEASED FOR TENDER/CONSTRUCTION

FOR NOTES REFER DRG. NO.: -
 C/ENGG/STD/FFPH/15

PREP.	REVD.	REVD.	REVD.	REVD.	REVD.	REVD.	APPD.	DATE
-------	-------	-------	-------	-------	-------	-------	-------	------

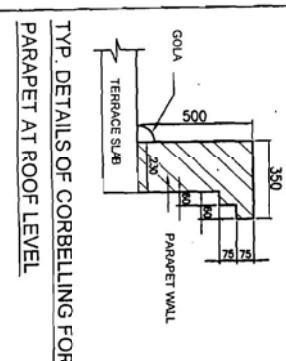
निर्माण हेतु जारी
 प्रकल्प प्रोजेक्ट 1
 वरिष्ठ अभियंता *Banas Kantar*
 22/09/15
 पावर ग्रिड कारपोरेशन ऑफ इंडिया लि0
 अभियांत्रिकी (सिविल), गुडगाँव, हरियाणा

1.	RO	02/01/12
No.	Revision/Issue	Date
POWER GRID CORPORATION OF INDIA LIMITED (A Government of India Enterprise)		
PROJECT: STANDARD FIRE FIGHTING PUMP HOUSE & WATER TANK.		
TITLE: GROUND FLOOR PLAN FOR FIRE FIGHTING PUMP HOUSE & WATER TANK		
DRAWING NO: C/ENGG/STD/M25/FFPH-1		
SCALE	SCALE N.T.S.	Sheet 1



SCHEDULE OF OPENINGS:-

SER. NO.	OPENING MARK	SIZE W&D mm	CILL LVL. mm	LINTEL LVL. mm	NO.	DESCRIPTION
01	ROLLING SHUTTER (RS)	2500X3400	+0.300	+3.70	01	STANDARD STEEL ROLLING SHUTTER
02	DOOR D	1000X2100	+0.300	+2.40	01	M.S. DOOR FRAME WITH M.S. SHEET DOUBLE SHUTTER
03	DOOR D1	900X1850	+4.45	+6.3	02	STEEL DOOR - SINGLE SHUTTER MADE FROM HOT ROLLED SECTION
04	WINDOW W1	900X1200	+1.20	+2.40	02	STEEL WINDOW (1200mm) GLAZED OPENING MADE FROM HOT ROLLED SECTIONS.
05	WINDOW W2	2700X1200	+1.20	+2.40	02	STEEL WINDOW (1200mm) GLAZED OPENING MADE FROM HOT ROLLED SECTIONS.
06	VENTILATOR V1	3010X660	AT BEAM BOTTOM	04	STEEL GRIL	
07	VENTILATOR V3	1000X660	AT BEAM BOTTOM	03	STEEL GRIL	



TYP. DETAILS OF CORBELLING FOR PARAPET AT ROOF LEVEL

PREP.	REVD.	REVD.	REVD.	REVD.	REVD.	APPD.	DATE

APPROVED BY ED/ENG-S/5m & T/L WIDE NOTE SHEET
 Ref:- C/ENG/CML/STD/FM/M25 Dated 09/02/2012

RELEASED FOR TENDER/CONSTRUCTION

FOR NOTES REFER DRG. NO.:-
 C/ENG/STD/FFPH/15

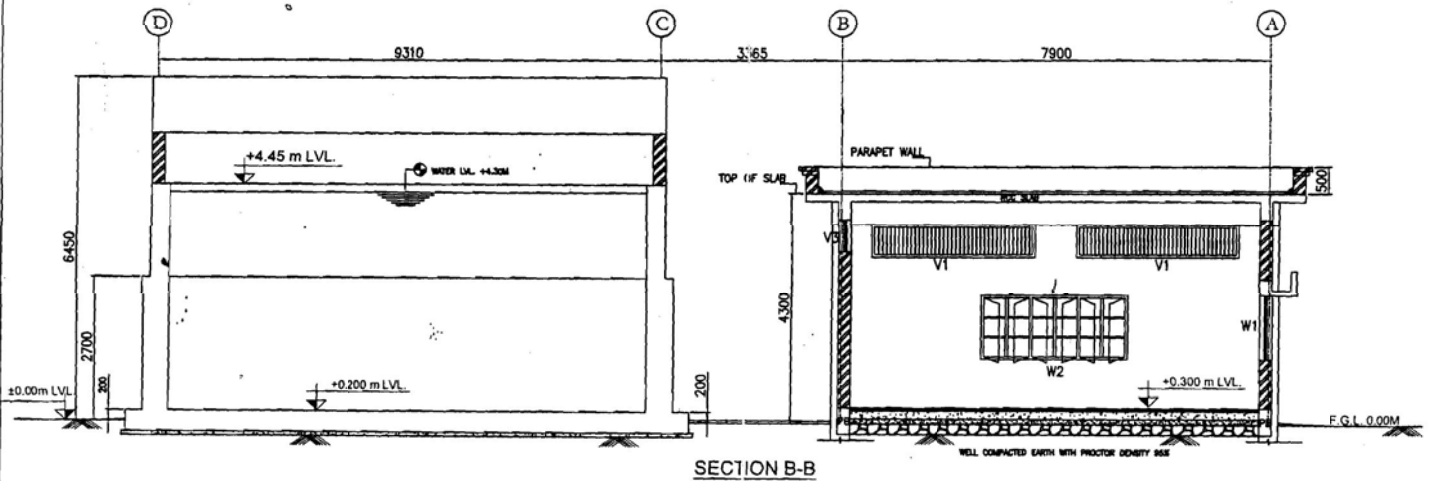
No.	Revision/Issue	Date
1.	R0	02/01/12

POWER GRID CORPORATION
 OF INDIA LIMITED
 (A Government of India Enterprise)

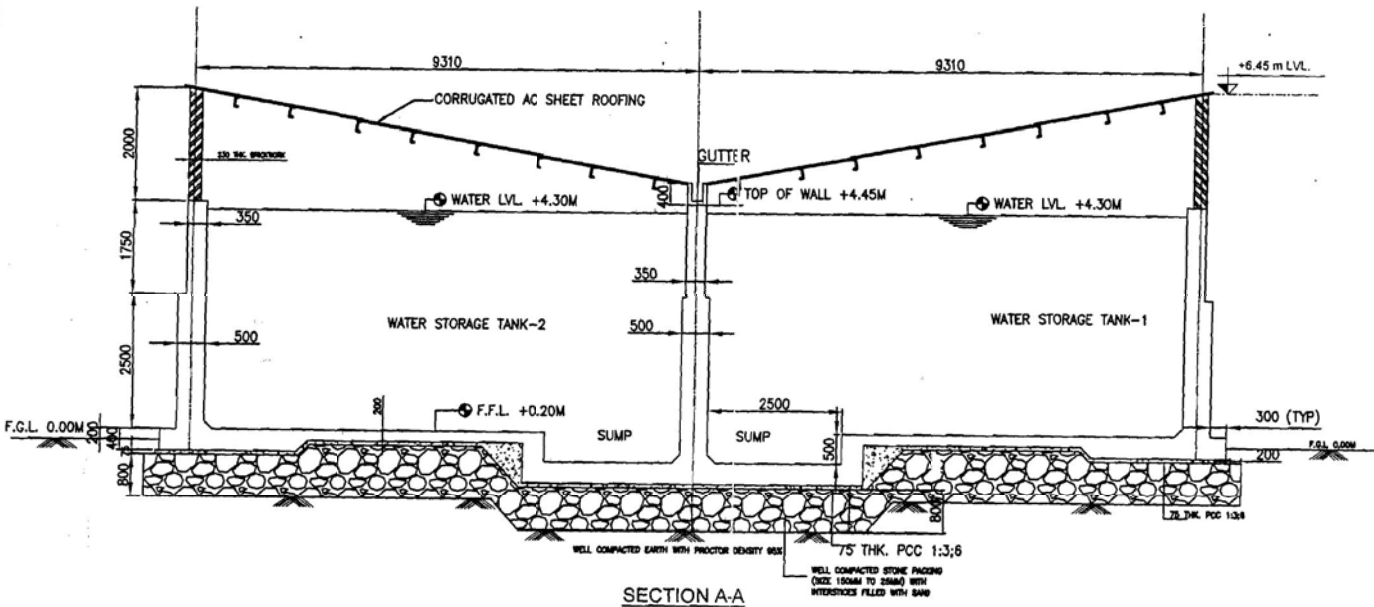
 ELEVATION FOR
 FIRE FIGHTING PUMP HOUSE
 & WATER TANK

 C/ENG/STD/M25/FFPH-2

As Noted Sheet
 As Noted As Noted



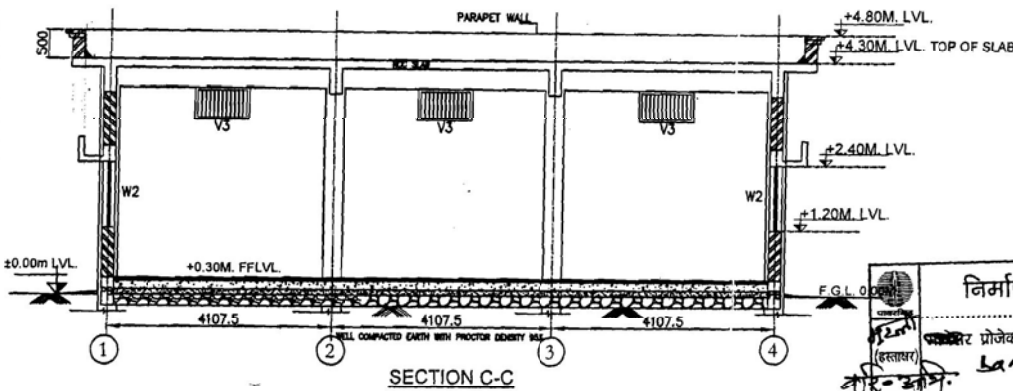
SECTION B-B



SECTION A-A

RELEASED FOR TENDER/CONSTRUCTION

FOR NOTES REFER DRG. NO.:-
C/ENGG/STD/FFPH/15



SECTION C-C

1.	R0	02/01/12
No.	Revision/Issue	Date

POWER GRID CORPORATION
OF INDIA LIMITED
(A Government of India Enterprise)



PROJECT:
STANDARD FIRE FIGHTING PUMP
HOUSE & WATER TANK.

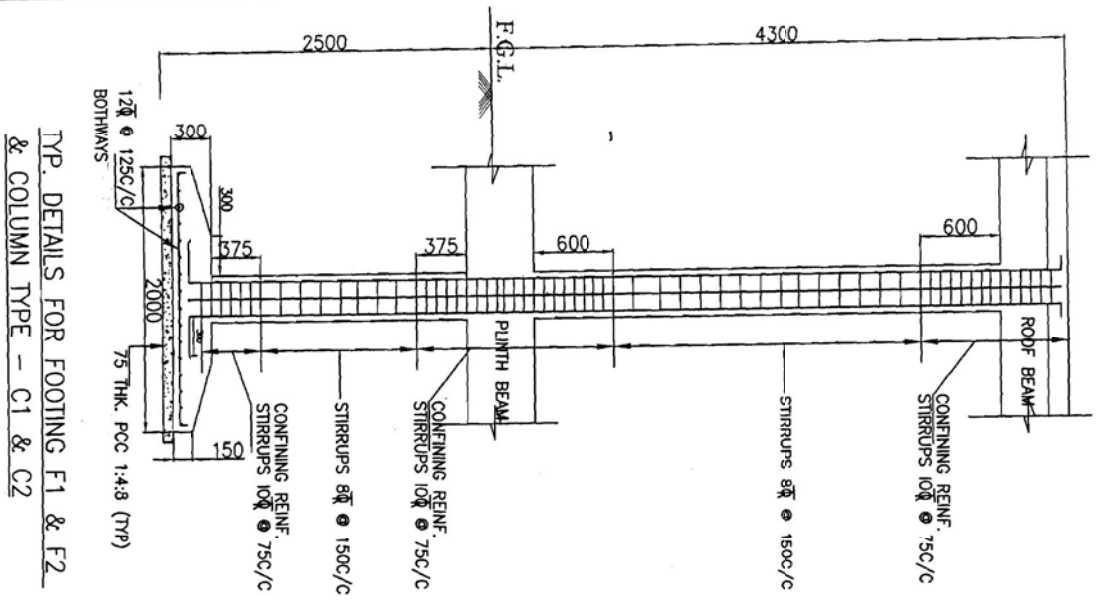
TITLE:
SECTION FOR
FIRE FIGHTING PUMP HOUSE
& WATER TANK

DRAWING NO:
C/ENGG/STD/M25/FFPH-4

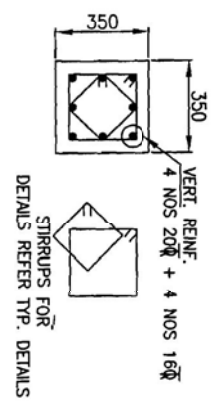
SCALE N.T.S. Sheet 1

APPROVED BY E.D.ENGG-i/Stn & T/L VIDE NOTE SHEET
Ref:- C/ENGG/CIVL/STD/FDN/M25 Dated 09/02/2012

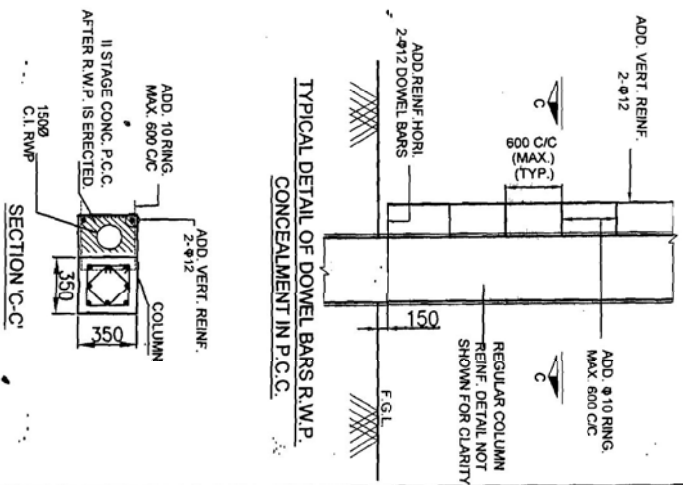
PREP.	REVD.	REVD.	REVD.	REVD.	APPD.	DATE
-------	-------	-------	-------	-------	-------	------



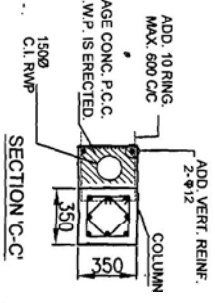
TYP. DETAILS FOR FOOTING F1 & F2
& COLUMN TYPE - C1 & C2



TYP. REINF. DETAILS FOR
COLUMN TYPE - C1 & C2

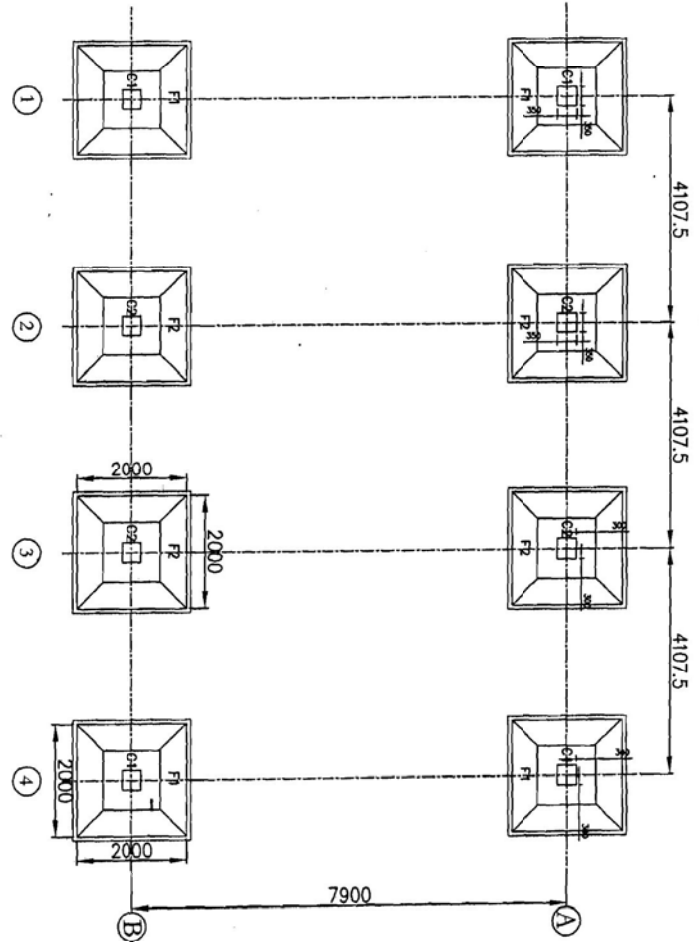


TYPICAL DETAIL OF DOME BARS R.W.P.
CONCEALMENT IN P.C.C.



SECTION C-C

APPROVED BY E.D. ENGG-S/SH & T/A WIDE NOTE SHEET
Ref:- C/ENGG/CIVIL/STD/FDN/M25 Dated 09/02/2012



FOUNDATION LAYOUT FOR FFPH

निर्माण हेतु जारी
शुद्धी संख्या 1
Loverstark S/S
शुद्धी कर सम्पूर्ण शिष्ट शेषानुसार
सिद्धि/शुद्धी (किसी) प्रमाणित करारानुसार

RELEASED FOR TENDER/CONSTRUCTION

FOR NOTES REFER DRG. NO.:-
C/ENGG/STD/FFPH/15

PREP.	REV'D.	REV'D.	REV'D.	REV'D.	APPRO.	DATE

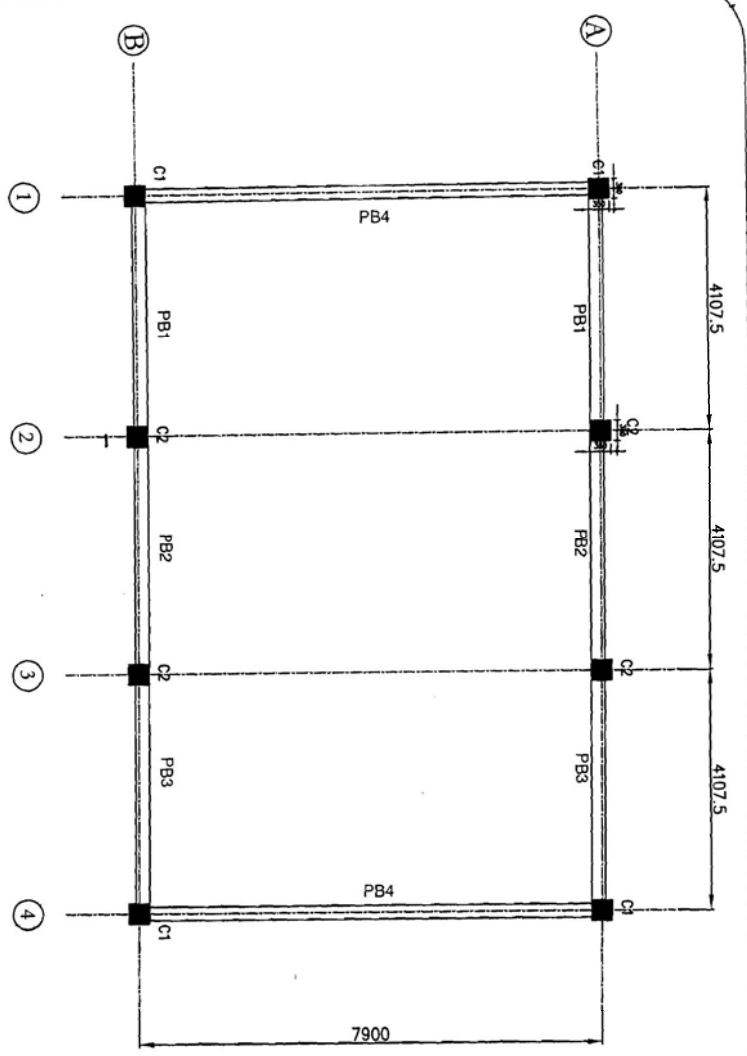
No.	RO	Revision/Issue	Date
1.			02/01/12

PROJECT:
STANDARD FIRE FIGHTING PUMP
HOUSE & WATER TANK.

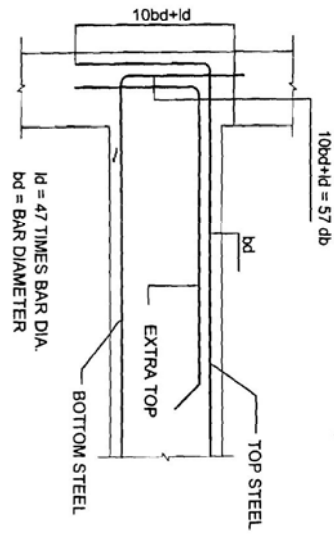
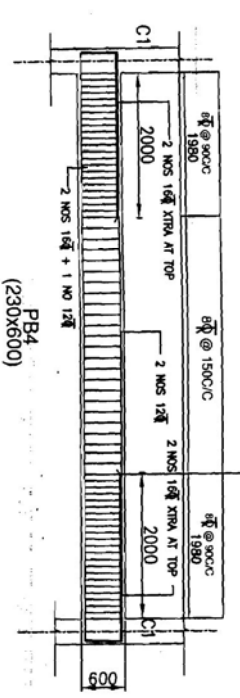
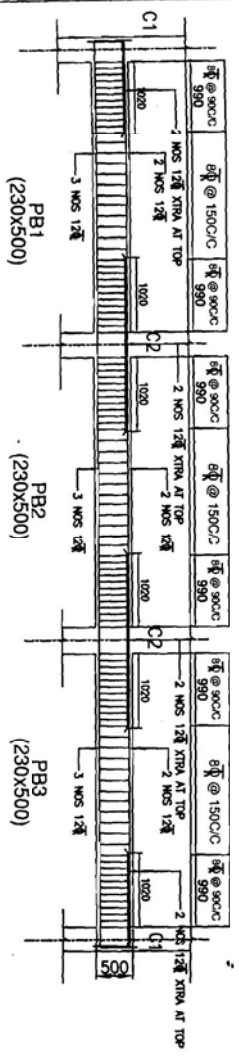
TITLE:
FOUNDATION LAYOUT & DETAILS
FOR FIGHTING PUMP HOUSE

DRAWING NO.:-
C/ENGG/STD/M25/FFPH-6

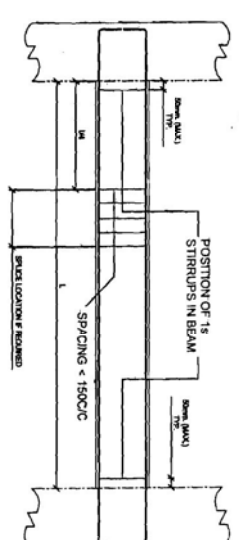
SCALE
SCALE N.T.S. Sheet 1



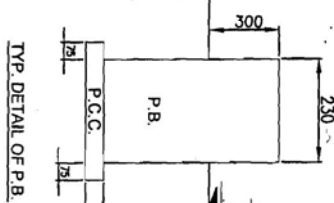
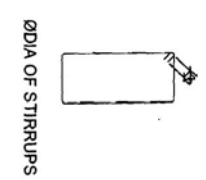
PLINTH LEVEL LAYOUT FOR FFPH



ANCHORAGE OF BEAM BARS IN AN EXTERNAL COLUMN (TYP.)



TYP. HOOK DETAILS OF STIRRUPS



TYP. DETAIL OF P.B.

F.G.L. ± 0.00m LVL.

निर्माण हेतु जारी
आदेश क्रमांक 1

आचार विवेक संरक्षणार्थ सहायक निरीक्षक निरीक्षक
सहायक निरीक्षक (निरीक्षक) गुणवत्ता, केंद्रावली

APPROVED BY E.D. ENGS-S/Sn & T/L VDE NOTE SHEET
Ref - C/ENGS/CIVIL/STD/TM/M25 Dated 09/02/2012

RELEASED FOR TENDER/CONSTRUCTION

FOR NOTES REFER DRG. NO.:-
C/ENGS/STD/FFPH/15

PREP.	REVD.	REVD.	REVD.	REVD.	APPR.	DATE

PROJECT:	POWER GRID CORPORATION OF INDIA LIMITED (A Government of India Enterprise)
PROJECT:	STANDARD FIRE FIGHTING PUMP HOUSE & WATER TANK.
DATE:	02/01/12
Revision/Issue:	R0
No.:	1
DRAWING NO.:	C/ENGS/STD/M25/FFPH-7
SCALE:	N.T.S.
Sheet:	1