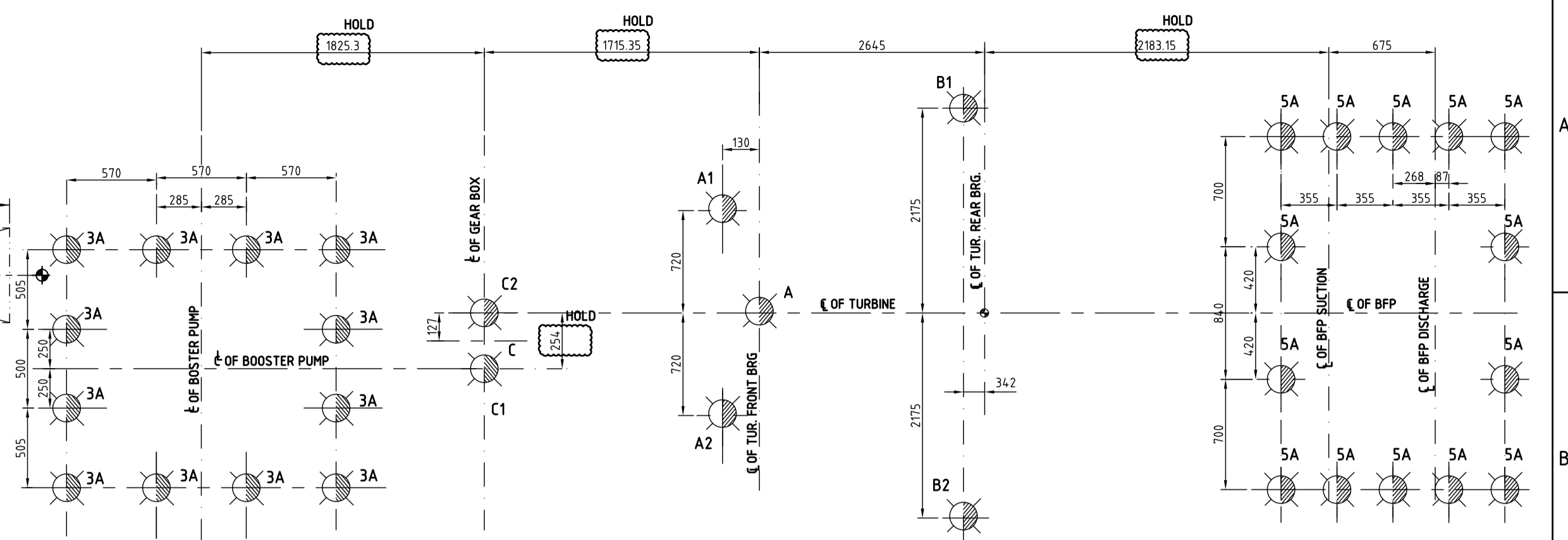


SECTION A-A

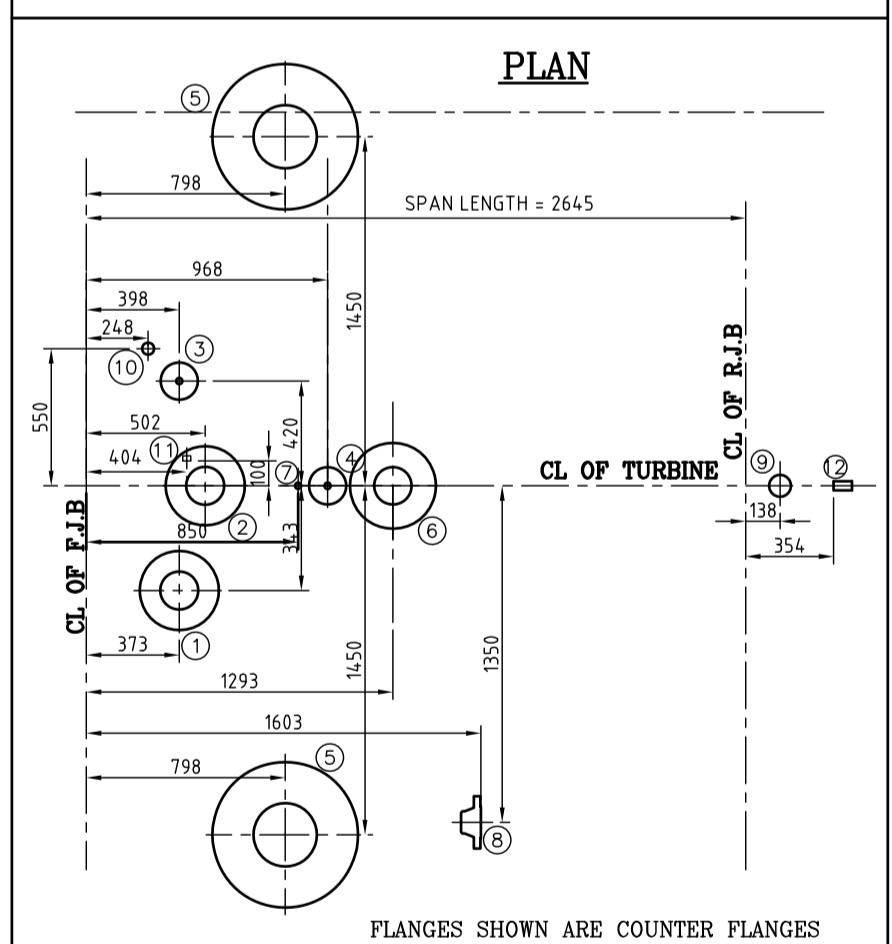
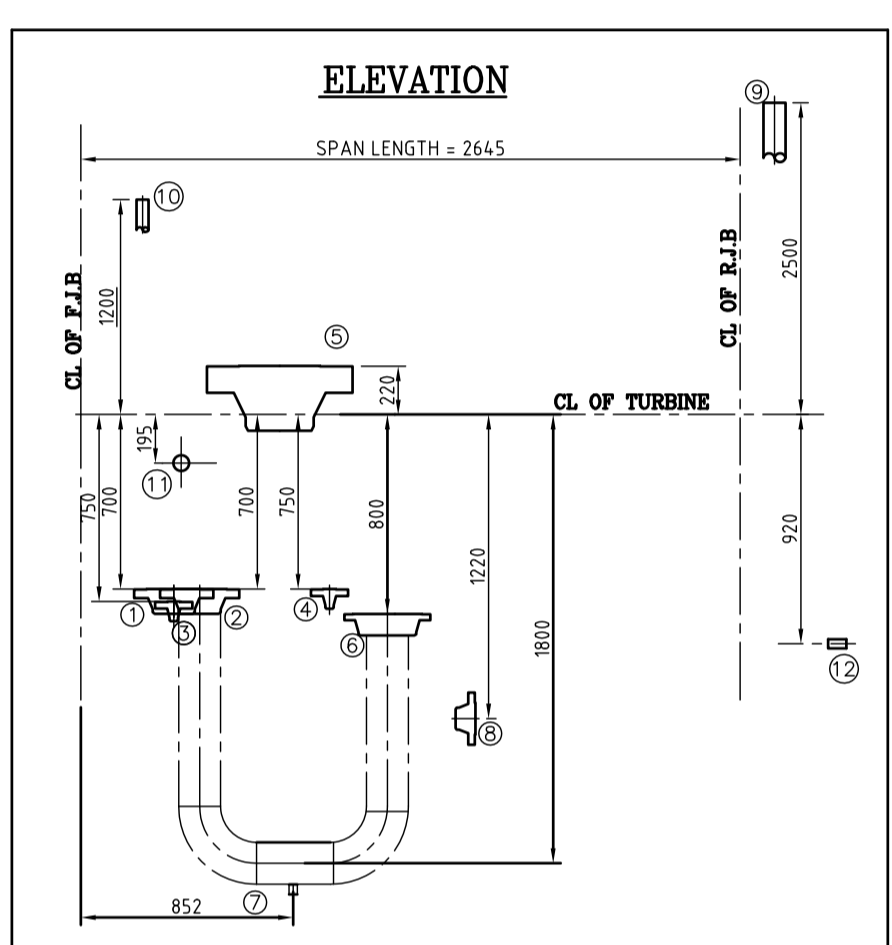
3x2 Ø8" PIPE SLEEVES FOR TURBINE DRAIN PPG.



LOCATION OF LOAD POINTS ON FOUNDATION TOP DECK (FOR PUMP-A & B)

SUPPORT PLATES				
DESIG.	PLATE SIZE	LOADS	QTY NO's	LOCATION
1	300 X 300	1.5 T	6	BOTTOM OF THE DECK (EL. 3.625 M)
1a	300 X 300	1.5 T	2	TOP OF THE DECK (EL. 4.950M)
2	300 X 300	2 T	4	BELOW THE DECK (EL. 3.625 M)
3	300 X 300	5 T	8	BELOW THE DECK (EL. 3.625 M)
4	500 X 500	1 T	6	VERTICAL SIDE OF DECK (CL EL. 4.300 M)
4a	500 X 300	1 T	6	VERTICAL SIDE OF DECK (CL EL. 4.550 M)
4b	500 X 300	1 T	6	VERTICAL SIDE OF DECK (CL EL. 3.875 M)
5	500 X 300	1 T	2	VERTICAL SIDE OF DECK (CL EL. 4.450M)
6	500 X 500	1 T	2	OPENING SIDES (CL EL. 4.60 M)
7	300 X 500	1T	4	VERTICAL SIDE OF DECK (CL EL. 3.625 M)
8	800 X300	1.5 T	3	BELOW THE DECK (EL. 3.625 M)

- NOTES:-**
- THIS DRG IS VALID FOR BOTH TDBFF'S (A & B)
 - ALL SUPPORT PLATES SHALL BE IN THE SCOPE OF CIVIL DESIGNER.
 - INDICATED DIMENSIONS ARE TO BE DECIDED CIVIL DESIGNER
- LEGEND:-**
- INDICATES LOAD POINTS.
 - ALL EP MARKED ON PLAN ARE REQUIRED AT BOTTOM OF DECK. AND EP MARKED ON SIDE (SECTION A-A & VIEW A) ARE REQUIRED AT BOTH SIDES OF DECK.
 - INSULATION FOR FOUNDATION PROTECTION FOR TURBINE CUTOUT.
 - POCKETS.
 - TOC TOP OF CONCRETE
 - TOG TOP OF GROUT
 - CUT out in TG DECK (Thorough Opening)



SL NO	DESCRIPTION	QTY	TYPE OF FLANGE	STEAM PARAMETERS
1	FRONT GLAND INLET	1	4" #300 WNR, SCH-40, C.S.	15.5bar/330°C
2	BALANCE PISTON GLAND	1	6" #300 WNR, SCH-40, C.S.	2.5bar/330°C
3	CASING DRAIN FLANGE-1	1	1" #600 WNR, SCH-40, C.S.	15.5bar/330°C
4	CASING DRAIN FLANGE-2	1	1" #600 WNR, SCH-40, C.S.	15.5bar/330°C
5	MAIN STEAM INLET	2	10" #500 WNR, SCH-40, A.S.	15.5bar/330°C
6	B.P. GLAND INTO CASING	1	6" #150 WNR, SCH-40, C.S.	2.5bar/330°C
7	B.P. PIPING DRAIN	1	1" SSOCKET, C.S.	2.5bar/330°C
8	REAR GLAND INLET	1	4" #300 WNR, SCH-40, C.S.	15.5bar/330°C
9	REAR STEAM VENT	1	PIPE DIA. 88.9x54.5, C.S.	0.98bar/330°C
10	FRONT STEAM VENT	1	PIPE DIA. 48.3x45.0, C.S.	0.98bar/330°C
11	FRONT STEAM GLAND DRAIN	1	PIPE 18.2x2.5432, TP321	0.98bar/330°C
12	REAR STEAM GLAND DRAIN	1	OLD G 1/2" C.S.	0.98bar/330°C
13	EXHAUST HOOD DRAIN	1	2" #150 WNR, SCH-40, C.S.	0.98bar/330°C

PLAN AT 5.00m (FOR PUMP-A)
(FOR PUMP-B ROTATE TOP DECK BY 180°)

STATUS: PRELIMINARY

PROJECT: 2X660MW, ENNORE SEZ STPP AT ASH DYKE OF NCTPS BFP DRIVE TURBINE(4 Nos.)

CUSTOMER: TAMIL NADU GENERATION AND DISTRIBUTION CORPORATION LIMITED (TANGEDCO)

CONSULTANT: DESEIN PRIVATE LIMITED, NEW DELHI

BHARAT HEAVY ELECTRICALS LTD. HYDERABAD

DRN.	NAME	SIGN.	DATE	NO OF VAR.
CHD.	C.BALAJI	[Signature]	10.02.2015	
APPD.	S.J.HUSSAIN	[Signature]	10.02.2015	-N.A.-
	M.A.HASEEB	[Signature]	10.02.2015	-N.A.-

DEPT. TCEP UNTOLO DIMS. GR. C/M/AF SCALE 1:30 WEIGHT (KG) REF. TO ASSY. DRG. ITEM NO. NO OF ITEMS

TITLE FOUNDATION ARRANGEMENT FOR BFP & DRIVE TURBINE CARD CODE N.A. DRAWING NO.(1-313-01-12735) REV. HY-DG-1-31301-12735 00 SHT. No 01 NO OF SHT. 03

THE INFORMATION ON THIS DOCUMENT IS THE PROPERTY OF BHARAT HEAVY ELECTRICALS LIMITED. IT MUST NOT BE USED DIRECTLY OR INDIRECTLY IN ANY WAY DETRIMENTAL TO THE INTERESTS OF THE COMPANY.
 GENERAL DIMENSIONAL LIMITS, FITS & TOLERANCES AS PER HY0230261
 SIGN AND DATE
 INVENTORY NO