



**PLANT STANDARD
HYDERABAD**

HY 724 25 80

REV. NO: 01

PAGE 1 OF 8

NIPPLE, BOTH SIDES NPT (MALE)

1.0 SCOPE :

This standard covers designation, materials, dimensions and sizes of Nipples, both sides NPT male threaded, made from pipe.

2.0 DESIGNATION :

Eg: A nipple to this standard, carbon steel material, nominal size 1/8", schedule 80 and length 100 mm shall be designated as follows:

2.1 On drawings :

- i) Material specification column : HY 724 25 80
- ii) Description column : NIPPLE 1/8" x 100 SCH 80 NPT CS

2.2 For placing indents on purchase:

Nipple, NPT, nominal size 1/8", Schedule 80, length 100, carbon steel, HY 724 25 80.

2.3 For issuing enquiries and purchase orders :

The above description shall be specified and a copy of this standard shall be enclosed.

3.0 COMPLIANCE WITH STANDARDS :

3.1 Sizes : To this standard

3.2 Material | Carbon steel: ASME:SA106 Gr: B
| Alloy steel : ASME : SA335 Gr: P11
| Stainless steel : ASME: SA312 Gr: TP 321

3.3 Threading : ANSI : B2.1

4.0 TEST CERTIFICATES :

Test certificates covering chemical composition & physical properties attested by M/s Lloyds shall be furnished by the suppliers.

Revisions: BROUGHT UPTO DATE			Issued : STANDARDS ENGINEERING DEPARTMENT		
Rev.No.	Rev.Date.	Revised:	Prepared:	Approved:	Date:
01	MAR '86		MAR, PDP	KLM	April '83

HY 724 25 80

REV. NO.01

PAGE 2 OF 8

**PLANT STANDARD
HYDERABAD**



5.0 MARKING :

The following details shall be punched on each nipple:

- a) Standard No.: HY 724 25 80
- b) Nominal size & Schedule No.
- c) Material specification
- d) Manufacturer's name or trade mark
- e) Mark of inspecting authority

6.0 PRESERVATION :

Before despatch, the nipples shall be dried and cleaned and the entire surface shall be well covered with a good quality rust preventive material that will become fluid and run off at 65°C. threads shall be protected with suitable grease.

7.0 PACKING :

The nipples shall be properly packed to avoid mechanical damages during transport.

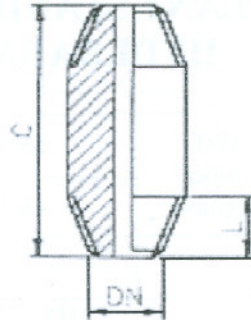


**PLANT STANDARD
HYDERABAD**

HY 724 25 80

REV. NO.01

PAGE 3 OF 8



i) NIPPLE, NPT, CARBON STEEL

ALL DIMENSIONS ARE IN 'mm' UNLESS OTHERWISE SPECIFIED.

NOM. SIZE DN INCHES	SCHE- DULE	LENG- TH C	L	Wt./ pc kg	Pref./ Stock Symbol	NEW CODE	MAIN USER DIVISIONS			
						OLD CODE	TC	OE	HE	
1/8	80	100	10			HY 724 25 80 013	√			
						77 590 112 02				
1/4	80	100	15			HY 724 25 80 021	√	√		
						77 59 02 12 03				
3/8	80	100	15							
1/2	80	100	20			HY 724 25 80 048	√	√	√	
		500				775 90 412 03				
	160	100				HY 724 25 80 056	√			
						N 724 230 128				
						HY 724 25 80 064				
XXS	100	77 5904 16 03	√							
			HY 724 25 80 072	√						
3/4	80	100	20			HY 724 25 80 080	√	√	√	
						77 590 51 203				
	160	100				HY 724 25 80 099	√			
						775 90 51 603				
XXS	100					HY 724 25 80 102	√			
										77 509 51 903
1	80	80	25			HY 724 25 80 110		√		
						96 53 79 45 50				
	100	100				HY 724 25 80 129	√	√		
						77 590 612 03				
	150					150	HY 724 25 80 137		√	
							96 537 945 70			
	225						HY 724 25 80 145		√	
			96 53 7 94 580							
160	100					HY 724 25 80 153	√			
										77 59 061 603
XXS	100					HY 724 25 80 161	√			
										77 590 619 03
1 1/4	80	100	2.6							



**PLANT STANDARD
HYDERABAD**

HY 724 25 80

REV. NO.01

PAGE 5 OF 8

NOM. SIZE DN INCHES	SCHE- DULE	LENG- TH C	L	Wt./ pc kg	Pref./ Stock Symbol	NEW CODE	MAIN USER DIVISIONS						
						OLD CODE	TC	OE	HE				
3	40	100	42			HY 724 25 80 420		√					
						965 37 94 670							
¾	80	100	20			HY 724 25 80 439		√					
						779 10 51 203							
¾	80	200	20			HY 724 25 80 447	√						
						779 20 51 203							

Copyright and Confidential
 The information on this document is the property of BHARAT HEAVY ELECTRICALS LIMITED. It must not be used directly in any way determined to the interest of the company.

HY 724 25 80

REV. NO.01

PAGE 6 OF 8

PLANT STANDARD
HYDERABAD



NIPPLE, NPT, ALLOY STEEL

all dimensions are in 'mm' unless otherwise specified

NOM. SIZE DN INCHES	SCHE-DULE	LENG-TH C	L	WT./ PC Kg	Pref./ Stock Symbol	NEW CODE	MAIN USER DIVISIONS				
						OLD CODE	TC				
1/8	80	100	10			HY 724 25 80 617	√				
						775 90 11 234					
1/4	80	100	15			HY 724 25 80 625	√				
						775 90 21 234					
3/8	80	100	15								
1/2	80	100	20			HY 724 25 80 641	√				
		775 90 412 34									
	160	100									
3/4	XXS	100	20			HY 724 25 80 668	√				
		775 90 41 934									
	80	100									
1	160	100	25			HY 724 25 80 676	√				
		775 90 51 234									
	XXS	100									
1 1/2			26			HY 724 25 80 692	√				
						775 90 51 934					
	80	100									
1 1/2	160	100	26			HY 724 25 80 706	√				
						775 90 61 234					
	XXS	100									
1 1/2			26			HY 724 25 80 722	√				
						775 90 61 934					
	80	100									
1 1/2	160	100	26			HY 724 25 80 730	√				
						775 90 81 234					
	XXS	100									
1 1/2			26			HY 724 25 80 757	√				
						775 90 81 934					

Copyright and Confidential
 The information on this document is the property of BHARAT HEAVY ELECTRICALS LIMITED. It must not be used directly in any way determined to the interest of the company.



**PLANT STANDARD
HYDERABAD**

HY 724 25 80

REV. NO.01

PAGE 7 OF 8

iii) NIPPLE, NPT, STAINLESS STEEL

all dimensions are in 'mm' unless otherwise specified

NOM. SIZE DN INCHES	SCHE-DULE	LENG-TH C	L	WT./ PC Kg	Pref./ Stock Symbol	NEW CODE		MAIN USER DIVISIONS			
						OLD CODE	TC				
1/8	80 S	100	10			HY 724 25 80 811	√				
						775 90 12 614					
¼	80 S	100	15			HY 724 25 80 820	√				
						775 90 22 614					
3/8	80 S	100	15								
½	80 S	100	20			HY 724 25 80 846	√				
						775 90 42 614					
	160 S	100				HY 724 25 80 854	√				
						775 90 43 014					
XXS	100	HY 724 25 80 862	√								
		775 90 41 914									
¾	80 S	100	20			HY 724 25 80 870	√				
						775 90 52 614					
	160 S	100				HY 724 25 80 889	√				
						775 90 53 014					
	XXS	100				HY 724 25 80 897	√				
						775 90 51 914					
1	80 S	100	25			HY 724 25 80 900	√				
						775 90 62 614					
	160 S	100				HY 724 25 80 919	√				
						775 90 63 014					
	XXS	100				HY 724 25 80 927	√				
						775 90 61 914					
1 1/2	80 S	100	26			HY 724 25 80 935	√				
						775 90 82 614					
	160 S	100				HY 724 25 80 943	√				
						775 90 83 014					
	XXS	100				HY 724 25 80 951	√				
						775 90 81 914					

Copyright and Confidential
The information on this document is the property of BHARAT HEAVY ELECTRICALS LIMITED. It must not be used directly in any way determined to the interest of the company.

HY 724 25 80

REV. NO.01

PAGE 8 OF 8

PLANT STANDARD
HYDERABAD



NOTE:

Standard and stock size

Standard and non-stock size

Standard size not used

Non-standard and stock size

Non-standard and non-stock size