



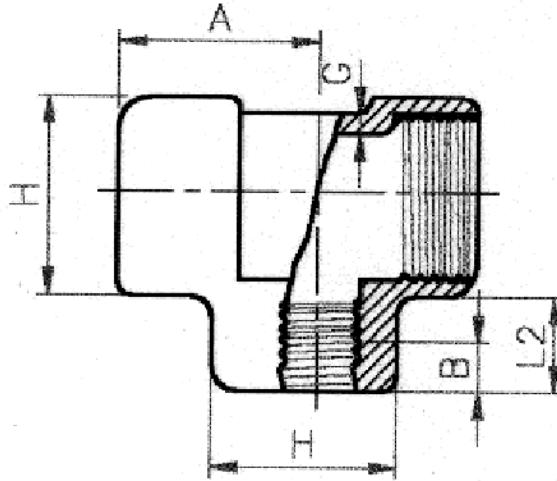
**PLANT STANDARD
HYDERABAD**

HY 724 25 96

REV. NO: 00

PAGE 1 OF 3

DIVISIONS AND RATIONALIZED SIZES



DESIGNATION:-

A TEE, CARBON STEEL MATERIAL, PRESSURE CLASS 3000, NOMINAL SIZE 1”
NPT, SHALL BE DESIGNATED AS FOLLOWS :
TEE 1” 3000 NPT CS

Revisions:

Issued :

**STANDARDS ENGINEERING
DEPARTMENT**

Rev.No.

Rev.Date.

Revised:

Prepared:

Approved:

Date:

00

RESTRICTED USE



Copyright and Confidential
The information on this document is the property of BHARAT HEAVY ELECTRICALS LIMITED. It must not be used directly in any way determined to the interest of the company.

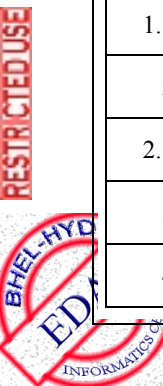
**PLANT STANDARD
HYDERABAD**



a1) PRESSURE CLASS :				3000		MATERIAL :		CARBON STEEL			
Nom. Pipe size inches	Centre To End A	Outside dia of Band H	Min wall thickness G	Length of thread min.		Wt./ piece kg	Pref. symbol	12 digit code		User divisions	
				B	L2			10 digit code		TC	DE
1/8	21	22	3.0	6.5	6.5						
1/4	25	25	3.5	8.0	10.0			HY 724 25 96 025 77 520 23 104	√	√	
3/8	29	33	3.5	9.0	10.5			HY 724 2596 033			
1/2	33	38	4.0	11.0	13.5			HY 724 25 96 041 77 52 04 31 04	√	√	
3/4	38	46	4.5	12.5	14.0			HY 724 25 960 50 77 520 531 04	√	√	
1	44	56	5.0	14.5	17.5			HY 724 25 960 68 77 520 631 04	√	√	
1.1/4	51	62	5.5	17.0	18.0			HY 724 25 96 076		√	
1.1/2	60	75	5.5	18.0	18.5			HY 724 25 96 084 77 520 831 04	√	√	
2	64	84	7.0	19.0	19.0			HY 724 25 96 092 -		√	
2.1/2	83	102	7.5	23.5	29.0						
3	95	121	9.0	26.0	30.5						
4	114	152	11.0	27.5	33.0						

a2) PRESSURE CLASS : 3000				MATERIAL :		STAINLESS STEEL.					
Nom. Pipe size inches	Centre To End A	Outside dia of Band H	Min wall thickness G	Length of thread min.		Wt./ piece kg	Pref. symbol	12 digit code		User divisions	
				B	L2			10 digit code		TC	
1/8	21	22	3.0	6.5	6.5						
1/4	25	25	3.5	8.0	10.0			HY 724 25 96 203 775 202 3118	√		
3/8	29	33	3.5	9.0	10.5			HY 724 2596 211			
1/2	33	38	4.0	11.0	13.5			HY 724 25 96 220 77 52 043 118	√		
3/4	38	46	4.5	12.5	14.0			HY 724 25 96 238 77 520 53 118	√		
1	44	56	5.0	14.5	17.5			HY 724 25 96 246 77 520 631 18	√		
1.1/4	51	62	5.5	17.0	18.0						
1.1/2	60	75	5.5	18.0	18.5			HY 724 25 96 262 77 520 831 18	√		
2	64	84	7.0	19.0	19.0						
2.1/2	83	102	7.5	23.5	29.0						
3	95	121	9.0	26.0	30.5						
4	114	152	11.0	27.5	33.0						

Copyright and Confidential
The information on this document is the property of BHARAT HEAVY ELECTRICALS LIMITED. It must not be used directly in any way determined to the interest of the company.





PLANT STANDARD HYDERABAD

HY 724 25 96

REV. NO.00

PAGE 3 OF 3

b1) PRESSURE CLASS : 6000 MATERIAL : CARBON STEEL

Nom. Pipe size inches	Centre To End A	Outside dia of Band H	Min wall thickness G	Length of thread min.		Wt./ piece kg	Pref. symbol	12 digit code	User divisions		
				B	L2			10 digit code	TC	GT	
1/8	21	22	3.0	6.5	6.5		○				
¼	25	25	3.5	8.0	10.0		◐	HY 724 25 96 297 77 520 23 204	√		
3/8	29	33	3.5	9.0	10.5		○				
½	33	38	4.0	11.0	13.5		◐	HY 724 25 96 319 77 52 043 204	√	√	
¾	38	46	4.5	12.5	14.0		◐	HY 724 25 96 327 77 520 53 204	√	√	
1	44	56	5.0	14.5	17.5		◐	HY 724 25 96 335 77 520 63 204	√	√	
1.1/4	51	62	5.5	17.0	18.0		○				
1.1/2	60	75	5.5	18.0	18.5		◐	HY 724 25 96 351 77 520 83 204	√		
2	64	84	7.0	19.0	19.0		◐	HY 724 25 96 360 -			GT
2.1/2	83	102	7.5	23.5	29.0		○				
3	95	121	9.0	26.0	30.5		○				
4	114	152	11.0	27.5	33.0		○				

b2) PRESSURE CLASS : 6000 MATERIAL : STAINLESS STEEL.

Nom. Pipe size inches	Centre To End A	Outside dia of Band H	Min wall thickness G	Length of thread min.		Wt./ piece kg	Pref. symbol	12 digit code	User divisions		
				B	L2			10 digit code	TC		
1/8	21	22	3.0	6.5	6.5		○				
¼	25	25	3.5	8.0	10.0		◐	HY 724 25 96 475 775 20 23 218	√		
3/8	29	33	3.5	9.0	10.5		○				
½	33	38	4.0	11.0	13.5		◐	HY 724 25 96 491 775 204 3218	√		
¾	38	46	4.5	12.5	14.0		◐	HY 724 25 96 505 77 520 53 218	√		
1	44	56	5.0	14.5	17.5		◐	HY 724 25 96 513 77 520 63 218	√		
1.1/4	51	62	5.5	17.0	18.0		○				
1.1/2	60	75	5.5	18.0	18.5		◐	HY 724 25 96 530 77 520 83 218	√		
2	64	84	7.0	19.0	19.0		○				
2.1/2	83	102	7.5	23.5	29.0		○				
3	95	121	9.0	26.0	30.5		○				
4	114	152	11.0	27.5	33.0		○				