



**PLANT STANDARD  
HYDERABAD**

**HY 731 66 64**

REV. NO: 00

PAGE 1 OF 2

**PRESSURE GAUGE PIPE COUPLING CONNECTION, NOMINAL  
PRESSURE (NP) 640**

DESIGNATION: EX: PRGG PIPE CPLNG M20X1.5

MATERIAL CARBON STEEL: IS1570 C40(N), AA 10208  
STAINLESS STEEL AA 182 F316

STANDARD : HY 7316664  
DIMENSIONS : C SN 137520  
THREADS : IS 4218, 6 H

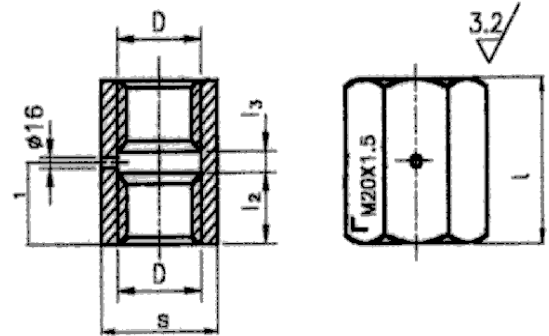


TABLE-1

SIZE D		l	l <sub>1</sub>	l <sub>2</sub>	l <sub>3</sub>	S h11	WEIGH T PER PIECE (kg)	CS	SS
D	D1							NEW CODE	NEW CODE
M12X1.5	M12 X1.5L	20	10	7.5	5	17	0.023	HY 731 66 64 010 787 52 00 011	
M20X1.5	M20X1.5L	36	18	15.5	5	30	0.088	HY 731 66 64 029 787 52 00 021	HY 731 66 64 037 -

TABLE: 2

SIZE-D		RAW MATERIAL SIZE	RAW MATERIAL CODE		SUPERSEDED DRG.NO
D	D1		CS	SS	
M12x1.5	M12X1.5L	AF 17X23	AA 1020108070		5-11-16 73
M20 x 1.5	M20X1.5L	AF 30X40	AA 1020108126		5-11-0747

Revisions:

Issued :

**STANDARDS ENGINEERING  
DEPARTMENT**

Rev.No.

Rev.Date:

Revised:

Prepared:

Approved:

Date:

KSN.

KLM

DEC 85'

The information on this document is the property of BHARAT HEAVY ELECTRICALS LIMITED. It must not be used directly in any way determined to the interest of the company.

RESTRICTED USE



**HY 731 66 64**

**PLANT STANDARD  
HYDERABAD**



Rev. No.00

PAGE 2 OF 2

- NOTES:
1. RAW MATERIAL AS PER BHEL PLANT STANDARD SIZES.
  2. DESIGNERS SHALL INDICATE 'M' AND RAW MATERIAL CODE IN THE PIECE LIST.
  3. IN THE CASE OF SUB CONTRACTED ITEMS SPECTROSCOPIC ANALYSIS BY METASCOPE SHALL BE DONE AT THE IGI STAGE.
  4. WEIGHTS INDICATED IN THE STANDARD ARE APPROXIMATE.

**Copyright and Confidential**  
The information on this document is the property of BHARAT HEAVY ELECTRICALS LIMITED. It must not be used directly in any way determined to the interest of the company.

RESTRICTED USE

