



A4 - 10

SECTION-B

DC-FS-676-410-001

REV. NO. 00

PAGE 01 OF 2

COPY RIGHT AND CONFIDENTIAL

The information on this document is the property of Bharat Heavy Electrical Limited.
It must not be used directly or indirectly in anyway detrimental to the interest of the company.

GENERAL INSTURCTION TO BIDDERS

FOR

**PURCHASE SPECIFICATION PS4102018
FLAME (SCANNER) MONITORING SYSTEM**

APPROVED BY:


VIDYA S

PREPARED

S B BANIK

ISSUED

ENGG

DATE

27.11.2013



PURCHASE SPECIFICATION PS4102018 FLAME (SCANNER) MONITORING SYSTEM

GENERAL INSTRUCTIONS TO BIDDERS

1.0 All required documents against this tender / specification shall be submitted in English only.

2.0 **Introduction:** Bidders are required to offer Flame Scanner Monitoring System for NTPC Farakka R & M project(2 X 500 MW) UNIT 4 & 5.

3.0 In order to accept the Technical offers / proposals from Bidders for the project mentioned in this Specification certain Pre-qualification criteria are required to be met by Bidder.

4.0 Pre-qualification requirements (PQR) are clearly mentioned in the specification. Bidder to read the same carefully and submit the details required for BHEL's acceptance.

5.0 In case Bidder does not include the details or meet the requirements of Pre-qualification requirements, their offer will be summarily Rejected and Bidder's Technical offers will not be evaluated.

6.0 **Evaluation methodology:** BHEL shall initially open Bidder's PQR documents only as per the specification for review & acceptance. Only after acceptance of PQR documents, BHEL shall open Bidder's Technical offers for evaluation. In the event of acceptance of Bidder's technical offers, the names of such bidders along with details provided by them for PQR and details of technical offers, shall be submitted to End users/Customers for their acceptance/approval. Commercial bids of only accepted/approved Bidders by End users/Customers, shall be considered by BHEL for further processing.

7.0 Registered Bidders with BHEL Electronics Division-Bangalore, who are already approved by M/s.NTPC for supply of Flame Scanner monitoring system are qualified automatically for submitting their technical offers for the same

8.0 Bidders are required to submit offers in three parts as detailed below:

Part-I (PQR documents)

Documents pertaining to Pre-Qualification requirements in line with the specification.

Part-II (Technical bid)

Technical bid shall be submitted in line with the Technical specs PS4102018 Rev no.00

Part-III(Commercial/Price bid)

9.0 Whenever required during evaluation of PQR and Technical offers/bids, vendor is required to be present at BHEL Electronic Division, Bangalore, for discussions. Further in the event of order, during approval of the Vendor documents by End users/Customers, Vendor shall accompany BHEL representative for discussions.



A4 - 10

SECTION-B

DC-FS-676-410-001

REV. NO. 00

PAGE 01 OF 2

COPY RIGHT AND CONFIDENTIAL

The information on this document is the property of Bharat Heavy Electrical Limited.
It must not be used directly or indirectly in anyway detrimental to the interest of the company.

***PRE-QUALIFICATIONS
REQUIREMENT***

FOR

***PURCHASE SPECIFICATION PS4102018
FLAME (SCANNER) MONITORING SYSTEM***

APPROVED BY:

[Signature]
VIBHANS

PREPARED

S B BANIK

ISSUED

ENGG

DATE

27.11.2013



***PURCHASE SPECIFICATION PS4102018
FLAME (SCANNER) MONITORING SYSTEM***

Pre-Qualification Requirements (PQR) of Bidders for Flame Scanner /Monitoring system as a part of Offer :

1.0 The bidder should have designed, manufactured and supplied the Flame Scanner and it's monitoring system for at least one front and rear fired furnace of BABCOCK /ANSALDO design having unit rating of 200 MW or above. Further the system being offered should have been in successful operation for at least one year prior to the date of opening of techno-commercial bid.

2.0 Vendor shall submit the proven Performance Track Record (PTR) for the model offered by them and also submit satisfactory performance certificates for atleast one years as on date of opening of bid from two end user.

3.0 Submit duly-filled Source Request Form (SRF), which shall be downloaded by Bidder from our website "www.bhel.com". Complete credentials of the company shall be submitted along with the SRF form. This is not applicable for Vendors who are already registered with BHEL Electronics Division, Bangalore.

Along with the documents related to PQR above, following details shall also be included in the Offer :

1.0 Technical literature / Manuals of offered system

2.0 Unpriced Purchase Order copies

3.0 Reports of successful commissioning of the system & Minutes of the meetings.

4.0 Name & registered address of the Indian branch office or Indian representative for support of Erection & Commissioning and after sales service, with Organization chart.

5.0 Details of Manufacturing, testing & inspection facility.

6.0 Bidder shall have facility in India for Engineering activities, preparation of Documents, Servicing of offered system, Stocking of Spares..etc.. Submit these details.

7.0 Bidder shall submit following Type Test Report for Solid state/ Electronic Cards of offered system

- i) Surge withstanding capacity (SWC) as per ANSI 37.90.1/IEEE-472
- ii) Dry Heat test as per IEC-68-2-2 or equivalent.
- iii) Damp Heat test as per IEC-68-2-3 or equivalent.
- iv) Vibration test as per IEC-68-2-6 or equivalent.
- v) Electrostatic discharge tests as per EN 61000-4-2 or equivalent.
- vi) Radio frequency immunity test as per EN61000-4-3 or equivalent.
- vii) Electromagnetic Field immunity test as per EN 61000-4-3 or equivalent.

8.0 If Bidder is not Original Equipment Manufacturer (OEM), than Bidder to include authorisation letter from OEM for design, engineering, Manufacture, testing, supply, erection, commissioning and servicing of the offered System. This authorisation letter provided by OEM to Bidder shall indicate the Type and Duration of the agreement.

Important note : In case Bidder does not submit details mentioned in above clauses or meet the requirements of Pre-qualification requirements, Offers will be summarily rejected and bidder's technical offers/proposals will not be evaluated. Please read carefully the General instructions.



SG CONTROLS
FARAKKA UNIT # 4 & 5
 PURCHASE SPECIFICATION
 FOR FLAME MONITORING SYSTEM

PS4102018

REV. NO. 00

PAGE 01 OF 17

COPY RIGHT AND CONFIDENTIAL
 The information on this document is the property of Bharat Heavy Electrical Limited.
 It must not be used directly or indirectly in anyway detrimental to the interest of the company.

TECHNICAL SPECIFICATION
FOR
FLAME (SCANNER)
MONITORING SYSTEM

(ORDERING SPECIFICATION)
FOR SG PACKAGE)

CUSTOMER:- N.T.P.C.

CONSULTANT

PROJECT:- N.T.P.C. FARAKKA R&M (2X500 MW) UNIT 4 & 5

PURCHASER DRG NO :



BHARAT HEAVY ELECTRICALS LIMITED
 ELECTRONICS DIVISION , BANGALORE

NAME	SIGN	Rv00			
PRPD	CMH	<i>CMH</i>			
CHKD	SBB	<i>SBB</i>			
APPD	VIDYA S	<i>VIDYA S</i>			

TITLE
COVER SHEET

DATE 23/08/2013

DRAWING/DOCUMENT NO: PS4102018
 REV 00

A4 - 11

**SG CONTROLS
FARAKKA UNIT # 4 & 5
PURCHASE SPECIFICATION
FOR FLAME MONITORING SYSTEM**

PS4102018

REV. 00

PAGE 02 OF 17

REVISION HISTORY SHEET

REV No.	DATE	NATURE OF CHANGE	REASON	PREPARED BY	CHECKED BY	APPROVED BY
00	23/08/2013	FIRST ISSUE	-	CMH <i>CMH</i>	SBB <i>SBB</i>	VS <i>VS</i>

COPY RIGHT AND CONFIDENTIAL
The information on this document is the property of Bharat Heavy Electrical Limited. It must not be used directly or indirectly in anyway detrimental to the interest of the company.

REV:00

APPROVED BY :

VS
VIDYA S

CHKD <i>SBB</i> SBB	PREPARED <i>CMH</i> CMH	ISSUED ENGG/410	DATE 23/08/2013
---------------------------	-------------------------------	--------------------	--------------------



A4 - 11

SG CONTROLS
FARAKKA UNIT # 4 & 5
PURCHASE SPECIFICATION
FOR FLAME MONITORING SYSTEM

PS4102018

REV. NO. 00

PAGE 03 OF 17

TECHNICAL REQUIREMENTS FOR FLAME MONITORING SYSTEM

1.0 GENERAL REQUIREMENTS:

1.1 The purpose of Flame Scanners and its monitoring systems is to detect the individual flame and to enhance the Boiler / Furnace safety, to avoid spurious and unwarranted trips, to increase operational reliability, availability and efficiency of the Steam Generator such that the consumption of fuel oil shall be reduced to optimum level.

1.2 Fail safe easily maintainable Flame Monitoring system shall be provided which shall include Flame detector of the proven design for the type of fuel, environmental condition and other conditions, of established reliability at all loads of the front and rear fired Steam Generator. It shall be designed to work under all adverse conditions such as wide variation in fuel/Air input ratio, wide variation in fuel characteristics, variation in operating temperature, maximum temperature under interruption of cooling air supply and shall be immune to electromagnetic Interference (EMI).

2.0 DESIGN & CONSTRUCTION

2.1 The Flame monitoring system should have two main parts namely
(i) Field mounted items with accessories and
(ii) Flame Scanner Panel with electronics. A detailed sketch having FLAME Scanner system components & its SCOPE is enclosed in Annexure-2.

Field :

2.1.1 The Local Boiler mounted items, i.e. Flame scanner Guide Pipe assembly and Flame scanner head Assembly including scanner housing electronics. The complete assembly are scope of supply of vendor.

2.1.2 These Boiler mounted devices sense the flame light spectrum and transmit the Electrical signals to the electronics cards which continuously monitor it and indicate the flame status.

2.1.3 Flame detector shall be working on the dynamic and static properties of Primary combustion zone of each type of fuel and flicker frequency of flame.

COPY RIGHT AND CONFIDENTIAL

The information on this document is the property of Bharat Heavy Electrical Limited. It must not be used directly or indirectly in anyway detrimental to the interest of the company.



A4 - 11

SG CONTROLS
FARAKKA UNIT # 4 & 5
PURCHASE SPECIFICATION
FOR FLAME MONITORING SYSTEM

PS4102018

REV. 00

PAGE 04 OF 17

2.1.4 It shall pick up only the flame to which it is assigned and shall not respond to the adjacent and back ground flame or other radiation generated in the furnace. The design shall also take into account the absorption by a coal shroud, re-circulated dust or other deposition on flame detector head.

2.2.1 **Electronic Panel:** The remote electronics Amplifier card with racks mounted in Flame Scanner Assembly cubicle (FSA) are to be supplied by vendors.

The complete system shall provide the discrimination between oil and Coal flame. Each fuel is fired independently **Liquid fuel either LDO (as per IS-1460:2000) or HFO and COAL.** Intensity indicators for main flame shall be provided along with galvanically isolated 4-20mA DC signals that can be hooked to DCS.

2.3.1 Flame Scanner Assembly cubicle (FSA) shall be provided with suitable power supply module, MCBs and backup fuses to withstand the rate of current of the connected amplifier load. The vendor to intimate power supply load requirement to BHEL/NTPC with the offer . Redundant power supply to be considered with suitable termination boards (TBs) for the distribution of power supply to the electronics Amplifier Modules.

2.3.2 The Supplier shall demonstrate the complete performance of flame detectors at site in cold start up test and load condition test. In cold start up Test, the capability of detectors to detect oil flame under varying oil Pressure shall be checked. In load test, the detector shall be able to detect when only oil is present, only coal is present and both oil and coal are present. It shall be ensured that the detectors are able to detect the proven flame at very low load with oil guns withdrawn. The above tests shall be performed for every coal and oil elevation.

2.3.3 **The system should be easily maintainable and include automatic self test at regular interval.**

2.3.4 The flame scanners provided by the vendor shall **be mounted in the existing opening of the furnace wall.** The vendor is required to study the existing arrangement, Schemes etc. available at site and propose a implementation scheme. **The vendor shall depute the concerned engineer to site within 2 weeks of the placement of award for acquiring mounting arrangements and dimensional details. A brief description of operating philosophy of the existing system is enclosed in Annexure-3 for better understanding.** However, functional requirement of existing flame scanner system must be met in all respect even if a different philosophy is offered.

COPY RIGHT AND CONFIDENTIAL

The information on this document is the property of Bharat Heavy Electrical Limited. It must not be used directly or indirectly in anyway detrimental to the interest of the company.



A4 - 11

SG CONTROLS
FARAKKA UNIT # 4 & 5
PURCHASE SPECIFICATION
FOR FLAME MONITORING SYSTEM

PS4102018

REV.00

PAGE 05 OF 17

2.3.5 All the incoming and outgoing signal points to and from the amplifier cabinet shall be terminated within the cabinet so that it can be easily connected by suitable cables without losing signal quality.

2.3.6 Provision for Redundant System Power TBs with return paths, Electronic and /or Shield bus bar /TBs shall be provided in the cabinet with proper insulation. The panel shall be provided with illumination (CFL) lamps and switch , 5-Pin 230V AC socket with switch ,incoming MCB etc.

2.3.7 Signal cable entries will be from bottom of the panels. **Existing width of Bottom floor cutout at site is 300mm.** Undrilled gland plates of 3 mm thick CRCA shall be provided along with double compression brass cable glands.

2.3.8 **A detailed specification of cabinet design is mentioned in Annexure -1.**

2.3.9 The Flame Monitoring system should confirm latest NFPA guideline.

2.3.10 All the components housed in the panels should be from latest proven product range of qualified manufacturers and shall be subjected to BHEL/NTPC approval. Detailed information on make specifications, type number and catalogues to be given . Makes of equipment shall be subjected to approval by purchaser without commercial/delivery implications.

COPY RIGHT AND CONFIDENTIAL

The information on this document is the property of Bharat Heavy Electrical Limited. It must not be used directly or indirectly in anyway detrimental to the interest of the company.



A4 - 11

**SG CONTROLS
FARAKKA UNIT # 4 & 5
PURCHASE SPECIFICATION
FOR FLAME MONITORING SYSTEM**

PS4102018

REV. NO. 00

PAGE 06 OF 17

3.0 PAINTING ::

3.1 The panels shall be chemically cleaned , rinsed , air dried and painted as per specification of panel in Annexure-1

4.0 REQUIREMENT OF TEST

Inspections will be carried out as per **BHEL/NTPC approved QP.**

4.1 Bidder to furnish standard tests carried out on such equipment with the offer . Generally the tests to be carried out will be as given below and/or as practiced by the vendor. Routine tests (test indicated below) shall be witnessed by Purchaser if so desired by them.

- a) Verification of material of construction.
- b) Verification of deviation.
- c) Functional Test wherever applicable.
- d) H.V. Test.
- e) Meggering & checking of resistivity before and after HV test.
- f) All routine tests as per IS8623
- g) Verification of makes of components/equipment.
- h) Type Test

COPY RIGHT AND CONFIDENTIAL

The information on this document is the property of Bharat Heavy Electrical Limited.
It must not be used directly or indirectly in anyway detrimental to the interest of the company.



A4 - 11

**SG CONTROLS
FARAKKA UNIT # 4 & 5
PURCHASE SPECIFICATION
FOR FLAME MONITORING SYSTEM**

PS4102018

REV. NO. 00

PAGE 07 OF 17

5.0 AVAILABILITY REQUIREMENTS

A high degree of reliability and availability is expected for the equipment. The equipment offered should work reliably at least for a period of 20 years from commissioning.

6.0 QUALITY PLAN

The equipment covered under this specification shall be subject to vendor quality Plan to be approved by M/s BHEL/NTPC before start of manufacture. to ensure that quality is in-built in each equipment the Quality Assurance system manual & Quality Plan indicating the system followed by the vendor shall be submitted to purchaser for his review along with the offer. The Testing shall include, in addition to the Routine Tests, Burn-in Test on the Electronic equipment as a complete system with all devices connected under energised condition as per following details.

Vendors shall submit Quality plan for the equipment along with the offer (2 sets) subject to approval by purchaser.

6.1 FACTORY ACCEPTANCE TEST (FAT)

The vendor shall give at least 15 days written advance notice to purchaser for witnessing the tests/inspection at various stages. The expenses for all such test/inspection shall be to Manufacturer's account except for the expenses of purchaser's representatives witnessing the test. The purchaser shall attend such test/inspection or advice that the manufacturer may proceed with the test, which shall be deemed to have in purchaser's presence and shall furnish relevant test result and test certificates to the purchaser for his review who will then issue material Dispatch Clearance Certificate (MDCC) enabling supplier to dispatch the equipment.

6.1.0 BURN IN TEST:

120 Hours of Burn-in Test at the Ambient temp prevalent at that time with simulated I/O shall be conducted on the fully assembled panel. Simulation test to include the Disturbance simulation , its identification and generation of suitable operator guidance message

COPY RIGHT AND CONFIDENTIAL

The information on this document is the property of Bharat Heavy Electrical Limited. It must not be used directly or indirectly in anyway detrimental to the interest of the company.



A4 - 11

**SG CONTROLS
FARAKKA UNIT # 4 & 5
PURCHASE SPECIFICATION
FOR FLAME MONITORING SYSTEM**

PS4102018

REV. NO. 00

PAGE 08 OF 17

6.1.1 TYPE TEST REQUIREMENT:

The Vendor shall give the type test report for the offered Flame monitoring System and the test requirement shall cover CMRR , NMRR verification .Submission of type test results and certificate shall be acceptable provided -

- i) The same has been carried out by the Vendor on exactly the same model / rating of equipment.
- ii) There has been no change in the components from the offered equipment & tested equipment.
- iii) The test has been carried out as per the latest standards along with amendments within Five (5) years as on the date of Bid opening and as indicated below :

**6.1.2 SPECIAL REQUIREMENT FOR SOLID STATE EQUIPMENTS/
ELECTRONIC CARDS OF OFFERED SYSTEM**

The minimum type test reports, which are to be submitted for each of the major item in the systems shall be as indicated below:

- i) Surge Withstand Capability (SWC) for Solid State Equipment Systems

All solid state systems/equipment shall be able to withstand the electrical noise and surges as encountered in actual service conditions and inherent in a power plant.

All the solid state systems/equipments shall be provided with all required protections that needs the surge withstand capability as defined in ANSI 37.90.1/ IEEE-472. Hence, all front end cards which receive external signals like Analog input & output modules, Binary input & output modules etc. including power supply, data highway, data links shall be provided with protections that meets the surge withstand capability as defined in ANSI 37.90.1/ IEEE-472. Complete details of the features incorporated in electronics systems to meet this requirement, the relevant tests carried out, the test certificates etc. shall be submitted along with the proposal. As an alternative to above, suitable class of EN 61000-4-12 which is equivalent to ANS/37.90.1/IEEE-472 may also be adopted for SWC test.

COPY RIGHT AND CONFIDENTIAL

The information on this document is the property of Bharat Heavy Electrical Limited. It must not be used directly or indirectly in anyway detrimental to the interest of the company.



A4 - 11

**SG CONTROLS
FARAKKA UNIT # 4 & 5
PURCHASE SPECIFICATION
FOR FLAME MONITORING SYSTEM**

PS4102018

REV. NO. 00

PAGE 09 OF 17

- ii) Dry Heat test as per IEC-68-2-2 or equivalent.
- iii) Damp Heat test as per IEC-68-2-3 or equivalent.
- iv) Vibration test as per IEC-68-2-6 or equivalent.
- v) Electrostatic discharge tests as per EN 61000-4-2 or equivalent.
- vi) Radio frequency immunity test as per EN61000-4-3 or equivalent.
- vii) Electromagnetic Field immunity test as per EN 61000-4-3 or equivalent.

7.0 ERECTION AND COMMISSIONING

7.1 All panel erection, cable laying, cable termination etc. will be done by BHEL under the supervision of Vendor's engineer. All cable termination details with cable schedule etc. to be given by Vendor to BHEL for cable terminations.

7.2 **Commissioning of the system shall be done by vendor only.** Commissioning includes Pre-commissioning checks, panel energizing, complete tuning, handing over of the system and protocol signing by BHEL site. Any commissioning tool/instrument required during commissioning, shall be brought by the vendor. Vendor to indicate separate Lump-sum price for this activity in the offer.

8.0 GUARANTEE AND WARRANTY CERTIFICATE

The equipment should be guaranteed for trouble free operation for a period of at least 24 months from the date of commissioning. Any failure of components / equipment within this specified period should be replaced free of cost by the vendor.

9.0 DOCUMENTS TO BE FURNISHED BEFORE AWARD OF CONTRACT

9.1.0 Vendor to submit latest documents/drawings/write-up/ dimensional details Of flame scanner amplifiers, head assembly, flange mounting, along with the offer.

9.1.1 Catalogue / documents pertaining to the Local Boiler Mounted Items.

9.1.2 Overall general arrangements of Flame monitoring system offered. Cubicle showing cutout for cable entry, Painting details, Fixing arrangement, foundation details, and overall dimension etc.

9.2 Type no., make, supplier of the items appearing in the Flame monitoring system along with Catalogues.

9.3 Deviations if any on the specification with clear justification.

9.4 Reference List

COPY RIGHT AND CONFIDENTIAL

The information on this document is the property of Bharat Heavy Electrical Limited. It must not be used directly or indirectly in anyway detrimental to the interest of the company.



**SG CONTROLS
FARAKKA UNIT # 4 & 5
PURCHASE SPECIFICATION
FOR FLAME MONITORING SYSTEM**

PS4102018

REV. NO. 00

PAGE 10 OF 17

**10.0 DOCUMENTS TO BE FURNISHED AFTER PLACEMENT OF ORDER
(FOR APPROVAL BY BHEL/NTPC)**

(Two sets hardcopies + soft copy in PDF format) of the following

- Technical write-up(functional)
- Technical literature/catalog of each component
- Configuration drawing
- Detailed bill of material with make & model
- Data sheet
- Schematic diagram/Loop diagram including Termination details
- Vendor shall submit a Quality Assurance Program (quality plan) covering the various tests conducted from raw material to finished product in BHEL/NTPC format for BHEL/NTPC's review and approval.
- List of Software to be supplied if any
- Type test reports for the Tests mentioned under clause 6.1.1 & 6.1.2
- IP32 Protection class type test Certificate of control panel.

Vendors shall prepare / furnish all drawing data, technical Literature of the equipment for approval. Detailed bill of material to be furnished for approval.

10.1 Documents to be furnished for review/acceptance by M/s BHEL/NTPC prior to dispatch of equipment from the works.

(2 sets hardcopies + soft copy in .PDF format)

- Visual/ Dimensional Test report
- Calibration report
- Type test / routine test reports
- Schematic diagram/Loop diagram including Termination details
- HV/IR Test Report
- Test certificate for all bought out items to be furnished for approval by purchaser.
- The routine and type test reports of miscellaneous components shall also be furnished

COPY RIGHT AND CONFIDENTIAL

The information on this document is the property of Bharat Heavy Electrical Limited. It must not be used directly or indirectly in anyway detrimental to the interest of the company.



A4 - 11

**SG CONTROLS
FARAKKA UNIT # 4 & 5
PURCHASE SPECIFICATION
FOR FLAME MONITORING SYSTEM**

PS4102018

REV. NO. 00

PAGE 11 OF 17

10.2 Final Operation & Maintenance Manual (O&M Manual) shall contain minimum of following:

- Technical write-up(functional)
 - Technical literature/catalog of each component
 - Configuration drawing
 - Detailed bill of material with make & model
 - Data sheet
 - Schematic diagram/Loop diagram including Termination details
 - Details of Software being supplied if any
 - Trouble shooting procedure and Maintenance guidelines
 - Overall General Arrangement Drg.
 - General Arrangement Drg.
- **O&M Manuals to be submitted at the Time of Dispatch.
(12 sets hardcopies + 3 set soft copy in .PDF format in CD)**

11.0 PACKING

The scanner system shall be packed individually in bubbled polythene sheet, packed in moulded thermocole boxes, kept in carton boxes, filled tightly with thermocole beads and further packed suitable to avoid transport and storage damages.

12.0 TRAINING

Vendor to provide One day On-site training per unit to BHEL/NTPC's engineers on all aspects of the Flame monitoring system being offered/supplied.

Tentatively 5-6 Engineers will participate in this training. Training shall necessarily include Technical details of Flame monitoring system , Operating principle, system trouble-shooting and maintenance, as minimum requirement.

COPY RIGHT AND CONFIDENTIAL

The information on this document is the property of Bharat Heavy Electrical Limited. It must not be used directly or indirectly in anyway detrimental to the interest of the company.



A4 - 11

SG CONTROLS
FARAKKA UNIT # 4 & 5
PURCHASE SPECIFICATION
FOR FLAME MONITORING SYSTEM

PS4102018

REV. NO. 00

PAGE 12 OF 17

13.0 INTENT OF SPECIFICATION :

This specification is intended to cover the design, manufacture ,assembly, testing of Flame Scanner Monitoring system at manufacturer's works and **proper packing and transporting** it to site and commissioning the system. However equipment shall be complete in all respects conforming to high standard of components which may not have been specifically mentioned, but are essential for satisfactory and trouble free operation /maintenance of the equipment.

14.0 QUALIFYING REQUIREMENT FOR BIDDERS :

The bidder should have designed , manufactured and supplied the Flame Scanner and it's monitoring system for **at least one front and rear fired furnace of BABCOCK /ANSALDO design having unit rating of 200 MW or above.** Further the system being offered should have been in successful operation for at least one year prior to the date of opening of techno-commercial bid.

COPY RIGHT AND CONFIDENTIAL

The information on this document is the property of Bharat Heavy Electrical Limited. It must not be used directly or indirectly in anyway detrimental to the interest of the company.



A4 - 11

**SG CONTROLS
FARAKKA UNIT # 4 & 5
PURCHASE SPECIFICATION
FOR FLAME MONITORING SYSTEM**

PS4102018

REV. NO. 00

PAGE 13 OF 17

15.0 SCOPE OF SUPPLY :

Vendor shall supply total two (2) Sets of Flame Monitoring System for 2 Units., Each system consists of the items detailed in **Clause no 20.0**

16.0 SPARE REQUIREMENT

Offered system shall be expandable. Various in-built spare capacity (per panel basis) shall be as follows

- i. 20% Rack space for mounting additional modules
- ii. 10% spare I/O channels wired upto Terminal Blocks for each type of signal , on overall basis
- iii. 10% spare Terminal blocks

17.0 Mandatory Spare quantities, apart from the required qty shall be as below (On per Project basis)

Following items of the Flame monitoring System should be supplied as

- i) 20% or 4 no.s which ever is more of complete flame scanner assembly including scanner head assembly, scanner housing and fibre optic cables
- ii) 100% of Flame scanner lens.
- iii) 10% or 2 no.s of each type whichever is more of Total requirements of Electronics Cards for Flame Scanners.
- iv) 10% or 2 no.s of each type whichever is more of Total requirements of Power Supply Modules.
- v) Any other item , which vendor thinks is required for trouble free operation for 2 years and not covered above, shall also be indicated and included in the offer with optional price.

NOTE : All mandatory spares items shall be quoted with Unit price along with required quantities, as per spec.

18.0 SITE INFORMATION :

The equipment offered shall be suitable for operation , in the stipulated site conditions . All ratings indicated are on at Site basis.

COPY RIGHT AND CONFIDENTIAL

The information on this document is the property of Bharat Heavy Electrical Limited. It must not be used directly or indirectly in anyway detrimental to the interest of the company.



A4 - 11

**SG CONTROLS
FARAKKA UNIT # 4 & 5
PURCHASE SPECIFICATION
FOR FLAME MONITORING SYSTEM**

PS4102018

REV. NO. 00

PAGE 14 OF 17

19.0 ADDITIONAL REQUIREMENTS

In amplifier chassis (Control Unit) :

- Indication for self-checking cycle.
- Flame on indication.
- Power supply indication.
- Adjustment to set pickup and drop off time of flame output relay.
- Terminal blocks shall be of screw type and suitable for receiving 2.5 sq.mm cable.

In head assembly :

- Heat barriers shall be provided for Head assembly.
- Vendor shall also indicate the following information of Scanner head assembly along with the offer.
 - 1) Maximum temperature withstanding capability for scanner head assembly.
 - 2) Cooling air quantity and other parameters.
 - 3) Materials of Head assembly components.

CABLES :

Screened cable connecting Scanner head assembly & Junction Box and Junction Box to Scanner Amplifier panel to be provided as per properties mentioned below.

- **FRLS Properties for Outer Sheath :-**
Size, type and the other electrical properties of the cable shall be as per scanner system requirement and should be resistant to water, fungus, termite & rodent attack.
- **Oxygen Index**
Minimum 29% at Room Temperature as per ASTM-D-2863.
- **Temperature Index**
Minimum 250 oC as per ASTM-D-2863
- **Smoke Density Rating**
Maximum 60 % as per ASTM-D-2843.
- **Acid Gas Generation**
Maximum 20 % by weight as per IEC-60754-1.
- **Flammability Characteristics**
Shall pass IEEE-383, IEC-332, SS-4241475

19.1 FLAME DETECTOR TESTING KIT

The vendor shall also provide a portable flame detector testing kit with built in stabilizer, capable of simulating both oil and coal flame, and testing of flame detector head unit at field. The testing kit shall also have facility for testing all type of electronic cards as being used in the flame monitoring system.

COPY RIGHT AND CONFIDENTIAL

The information on this document is the property of Bharat Heavy Electrical Limited. It must not be used directly or indirectly in anyway detrimental to the interest of the company.



**SG CONTROLS
FARAKKA UNIT # 4 & 5
PURCHASE SPECIFICATION
FOR FLAME MONITORING SYSTEM**

PS4102018

REV. NO. 00

PAGE 15 OF 17

20.0 SCOPE OF SUPPLY

Sl. No	System Description	Quantity per Boiler	Vendor's Compliance
1.	IR Flame scanner head assembly with guide pipe assembly. (Type of sensor-Solid State type)	96 Set (48 nos for Oil flame and 48 nos of Coal flame scanners).	
2.	IR Flame scanner amplifier	96 Set.	
3.	Cables (Head assembly to Local Junction Box)	Heat Resistant Interconnecting cables (as per clause no 19.0) of quantity approx. 50 metre , between scanner head assembly and Local Junction Box in each elevation	
4.	Cables (Local Junction Box to Flame Scanner Panel)	Interconnecting cables (as per clause no 19.0) of quantity approx. 350 metre , between Local Junction Box to Flame Scanner Panel. Suitable group cable can be used.	
5.	Cooling and purge air accessories.	1. 2 metre length flexible hose with ½" NPT (F) connector - 1 No. for Purge air port. 2. 1/2" NPT Nipple - 2 Nos.	
6.	Heat Insulator	96 set	
7.	Local junction box for scanner head assembly, if required.	As required	
8.	Cable glands	As required	
9.	Special tools	Special tools required for commissioning or maintenance has to be included.	

COPY RIGHT AND CONFIDENTIAL

The information on this document is the property of Bharat Heavy Electrical Limited. It must not be used directly or indirectly in anyway detrimental to the interest of the company.



A4 - 11

**SG CONTROLS
FARAKKA UNIT # 4 & 5
PURCHASE SPECIFICATION
FOR FLAME MONITORING SYSTEM**

PS4102018

REV. NO. 00

PAGE 16 OF 17

COPY RIGHT AND CONFIDENTIAL

The information on this document is the property of Bharat Heavy Electrical Limited. It must not be used directly or indirectly in anyway detrimental to the interest of the company.

10	Swivel mount arrangement with Mounting flange (suitable Nipple arrangement) to match with the flange available at Burner Side	96 Set	
11	Mounting Bolt, Nut and Washers as applicable– For fixing the flange. Above specification is sample. Actual to be collected from site by supplier.	96 Set	
12	<p>A)</p> <p>Flame contacts : 1 No. No flame contacts : 1 No. Scanner fault contact, : 1 No.</p> <p>Rating of the above contacts shall be 2A @ 240V AC or 0.2 A @ 220 V DC. To be provider for each of the Flame Scanner. Apart from the above one analog 4-20mA signal for each of the Flame Scanner for Flame Intensity.</p> <p>B)</p> <p>As per existing philosophy in Annexure-3 , Flame Scanner panel should accept ONE input (DI) signal from DCS for each Oil elevation and THREE (DI) signal from combined Coal elevation to meet the existing functional requirement as mentioned in Annexure-3.</p>	To be included.	
13	Any other items if required, to make the system complete in all aspects shall be indicated by vendor.	To be included.	



A4 - 11

**SG CONTROLS
FARAKKA UNIT # 4 & 5
PURCHASE SPECIFICATION
FOR FLAME MONITORING SYSTEM**

PS4102018

REV. NO. 00

PAGE 17 OF 17

21.0 Special Note:

1. Vendor must furnish, all documents, in line with specification along with offer. Clause-wise specific acceptance/deviations shall be furnished. Deviations, if any, must be clearly brought out in offer. Failure to provide Clause-wise acceptance/deviations may result in Technical disqualification.
2. It is the responsibility of vendor to check for completeness of the offered system. If any additional component/software etc. is required during Engineering/Testing/Erection/Commissioning, then same to be provided by Vendor with NO EXTRA COST TO BHEL.
3. Any clarification required from BHEL side may be obtained during offer stage only.
4. All mandatory spares items shall be quoted with Unit price along with required quantities, as per spec.
5. Vendor shall submit the proven **Performance Track Record (PTR)** for the model offered by them. The offered model shall have been installed in a similar boiler configuration as indicated in this specification and the same shall be in satisfactory operation for more than 1 years.
6. Bidder is requested to carefully examine and understand the specifications and seek clarifications, if required, to ensure that they have understood the specification. The Bidder's offer should not carry any sections like clarifications, interpretations and/or assumptions. Deviation if any shall be brought only in "Deviation format". In the event of conflict between the Technical specification and the conditions of Contract, the requirements as indicated in the Technical specification shall govern, unless confirmed otherwise by the Purchaser in writing before the award of contract based on a written request from the bidder for such a clarification. However if the bidder feels that, in his opinion, certain features brought out in his offer are superior to what has been specified, these may be highlighted separately. In case of technical conflicts, BHEL's decision will be final.

Vendor to indicate clearly clause wise compliance with ' Yes', ' No' or 'Not Applicable'. Deviation if any to be clearly mentioned along with the offer.

COPY RIGHT AND CONFIDENTIAL

The information on this document is the property of Bharat Heavy Electrical Limited. It must not be used directly or indirectly in anyway detrimental to the interest of the company.



A4 - 11

ANNEXURE- 1 OF PS4102018

Purchase Specification for Flame Scanner panel

REV. NO. 00

PAGE 1 OF 4

COPY RIGHT AND CONFIDENTIAL

The information on this document is the property of Bharat Heavy Electrical Limited.
It must not be used directly or indirectly in anyway detrimental to the interest of the company.

1. INTENT:

Supply of panel along with Power supply Terminal Blocks, De-coupling diodes, hardware for mounting racks, Terminal blocks for signals, Bus bars etc.

2. DIMENSIONS:

- Panel to be fabricated using CRCA sheet, using welded/bolted construction. Basic Panel should generally have the following internal dimensions (minimum): 750mm (W) x 750mm (D) x 2200mm (H). If one panel is not sufficient to house all the electronic amplifier cards, suit of two panel should be used.
- Bottom frame height- 50mm

3. FRAME WORK:

- Framework material shall be CRCA (Cold Rolled Carbon Steel Sheet, Annealed).

4. DOORS, PANELS & COVERS:

- Doors shall be minimum 2.0mm CRCA sheet. Side plates should be minimum 1.5mm thick CRCA sheet.
Top and bottom covers should be minimum 1.5mm thick CRCA sheet.
- Removable Gland Plates - 3.0 mm thick CRCA sheet

5. DOORS:

- 2 doors in front and 2 doors at rear per panel. Master key for all the panels shall be provided.
- Door switches:
 - Front of the panel - 2 switch for the lighting and Door Open Alarm Contact to DCS
 - Rear of the panel - 2 switch for the lighting and Door Open Alarm Contact to DCS

6. CANOPY (Top plate) CONSTRUCTION:

Canopy (Top plate) shall be made of 1.5mm CRCA sheet (Minimum)

7. PAINTING:

- a. Finished surface to be free from waves, belies or other imperfections.
- b. Epoxy based and Powder coated
- c. Doors, Canopy - Off-white RAL 9002 Semi glossy finish both interior and exterior



A4 - 11

ANNEXURE- 1 OF PS4102018

Purchase Specification for Flame Scanner panel

REV. NO. 00

PAGE 2 OF 4

- a. Side plates - Exterior - Blue to shade RAL 5012; Interior - Off-white RAL 9002 Semi glossy
- b. Minimum thickness is 65-75 microns.

8. ADDITIONAL REQUIREMENTS:

- a. Supplier to submit a document detailing out the lifting mechanism provided for the panels.

9. GENERAL:

- Location of erection of the panels: Electronic Control Room
- Permissible Ambient Condition
 - a) Room Temperature Operation : 0 Deg C to 50 Deg C
Storage: -25 Deg C to 80 Deg C
 - b) Relative Humidity : Average : 65%
Short Duration : 95%max (One Day)
- Protection class of the Panel: IP 32 as per IS:13947
- Glands & Gland plate: Panels to be provided with removable gland plate that will be fixed to the bottom of the panel. Glands plate shall be 3mm thick CRCA sheet at the bottom. Cable glands Qty will be as per the cables entering in each panel. Make of glands shall be indicated in the offer by vendor and subject to approval by BHEL.
- Gaskets to be provided for all openings.
- Anti vibration pads shall be provided for the panels
- All electronic hardware housed inside the panels shall be considered for power dissipation , power load calculation and details to be provided along with offer.
- Cable entry will be from the bottom.
- OGA Drawing to be submitted for approval before manufacture.
- Suppliers internal Test Certificate for dimensions, Visual inspection, Paint, to be submitted before giving inspection call to BHEL.
- Inspection by BHEL/Customer at suppliers works.
- Item shall be packed in all weather proof packing with sufficient cushioning to avoid Transit damages.
- Name plate of 2mm thick Stainless steel with following details is to be provided inside each panel:

COPY RIGHT AND CONFIDENTIAL

The information on this document is the property of Bharat Heavy Electrical Limited. It must not be used directly or indirectly in anyway detrimental to the interest of the company.



A4 - 11

ANNEXURE- 1 OF PS4102018

Purchase Specification for Flame Scanner panel

REV. NO. 00

PAGE 3 OF 4

- ◆ ITEM : As per PO
- ◆ PROJECT NAME / UNIT No. : As per PO
- ◆ CUSTOMER NAME : As per PO
- ◆ BHEL ORDER No. : As per PO
- ◆ Date of Dispatch to Site :

- Vendor to specify the operating power supply requirement. Power supply will be made available by purchaser at the panel I/P terminal block. Vendor to provide necessary protection for the power supply circuit. It may be noted that only 230VAC power will be provided from UPS. Any other power supply requirement shall be taken care of by the supplier.
- Panels shall be provided with illumination (CFL) lamp (operating at 230VAC,50Hz) in both front and back of the panels
- Type test certificate for IP32 protection class (Based on tests done on similar panels and not more than 3 years old) shall be furnished along with the offer for the panel.
- Smoke detector: Suitable mounting bracket for the smoke detector needs to be provided.
- Front and rear access to the panel is envisaged.
- Nomenclature plate: To be provided on the top of the panel at both front and rear of the panels. Details will be provided during detailed engineering stage.
- Any other type of construction, generally meeting above requirement is also applicable, subject to approval by BHEL/NTPC.

LIST OF APPROVED VENDORS FOR PANELS

1. M/s Pyrotech , Udaipur
2. M/s Rittal, Bangalore
3. M/s Chemin , Pondichery
4. M/s Khoday Control System, Bangalore

Panels of any other reputed panel manufacturer, who is regular supplier to vendor, may also be supplied subjected to approval by BHEL. Details/reference list of such vendors may be submitted along with the offer.

COPY RIGHT AND CONFIDENTIAL

The information on this document is the property of Bharat Heavy Electrical Limited. It must not be used directly or indirectly in anyway detrimental to the interest of the company.



A4 - 11

ANNEXURE- 1 OF PS4102018

Purchase Specification for Flame Scanner panel

REV. NO. 00

PAGE 4 OF 4

10. HARDWARE TO BE PROVIDED

- Provision to accept 2 nos. redundant feeders of +240VAC, 10Amps (rating to be decided by vendor) power supply with necessary TBs and Breakers.
- Provision to accept 1 feeder of 240VAC for Panel illumination and power supply socket with necessary TBs and breakers.
- Terminal Blocks suitable for Cage Clamp type of connections - As required.
- Individual alarm contacts (potential free) wired upto TBs for 230VAC feeder under voltage (210V), Over Voltage(250V) and Total Feeder fault(tripped).
- Cable channels for cable routing inside the panel. Separate cable channel to be provided for purchaser use.
- Tin Plated Copper Bus bar each for panel Earthing and Screen/Shield
- Panel internal mounting arrangement of various components will be approved by BHEL at detailed engineering stage.
- All internal wiring to be done with FRLS insulated Cables.
- Suitable provision to monitor panel internal temperature to be provided. Individual Alarm contacts (suitable to 240 VAC 0.5amp) wired upto TBs to be provided .
- All internal wires shall be provided with tag and identification nos. etched on tightly fitted ferrules at both ends. All wires directly connected to trip devices shall be distinguished by one additional red colour ferrule.
- All external connection shall be made with one wire per termination point. Wires shall not be tapped or spliced between terminal points.
- All the cores of interconnecting cables (between DCS to FlameScanner panel and Field-JB to Flame Scanner panel must be terminated sequentially with consecutive post maintaining colour codes.
- All the special tools as may be required for solder less connections shall be provided by vendor.

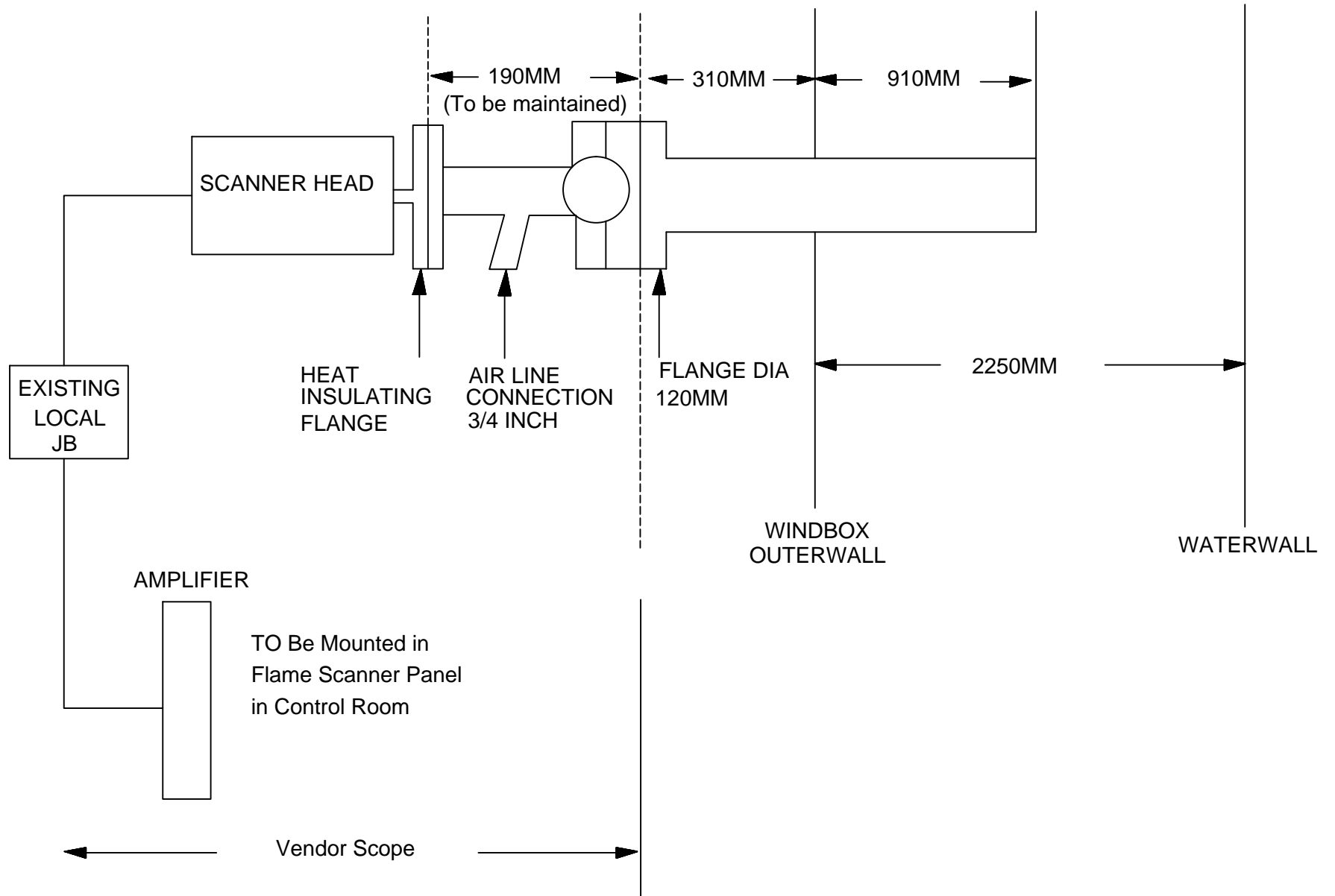
Makes

- Terminal Blocks : Wago/Phoenix/Elmax
- MCB/Breakers : ABB/Schneider/Siemens/Indo Kopp/MDS
Load contact/Merlin Gerin
- De-coupling Diode: Vendor to propose make for approval
- Under/Over Voltage, Feeder Fault Monitoring : Vendor to propose
make for approval

COPY RIGHT AND CONFIDENTIAL

The information on this document is the property of Bharat Heavy Electrical Limited.
It must not be used directly or indirectly in anyway detrimental to the interest of the company.

SCANNER ASSEMBLY MOUNTING ARRANGEMENT DIAGRAM AS EXISTING



Details of Scanner: (Line of Sight LOS)

Wind-box Length:2250mm (inner wall to outer wall)

Coal Burner length:1200mm (inside wind-box)

Guide pipe Length:1250mm(total),910mm (inside wind-box),310mm(outsidewind-box)

Guide pipe: 3inch (dia),5mm (thickness)

Guid pipe Fixed Flange Diameter: 120mm

Guid pipe Fixed Flange to Scanner head flange lengt:190mm

Scanner air fan discharge pr:1300mmwcl

Scanner air fan capacity:4400 NM3/hr

Scanner air pr at scanner head:110mmwcl(approx.)

All Dimensions Are In mm.

The above dimensions are approximate,vendor to acquire the exact measurement from site before manufacturing



FARAKKA UNIT-4 & 5 R & M (2X500MW)

TITLE
FLAME SCANNER SYSTEM
COMPONENTS & ITS SCOPE

DRAWING
NUMBER

REVISION
NUMBER 00

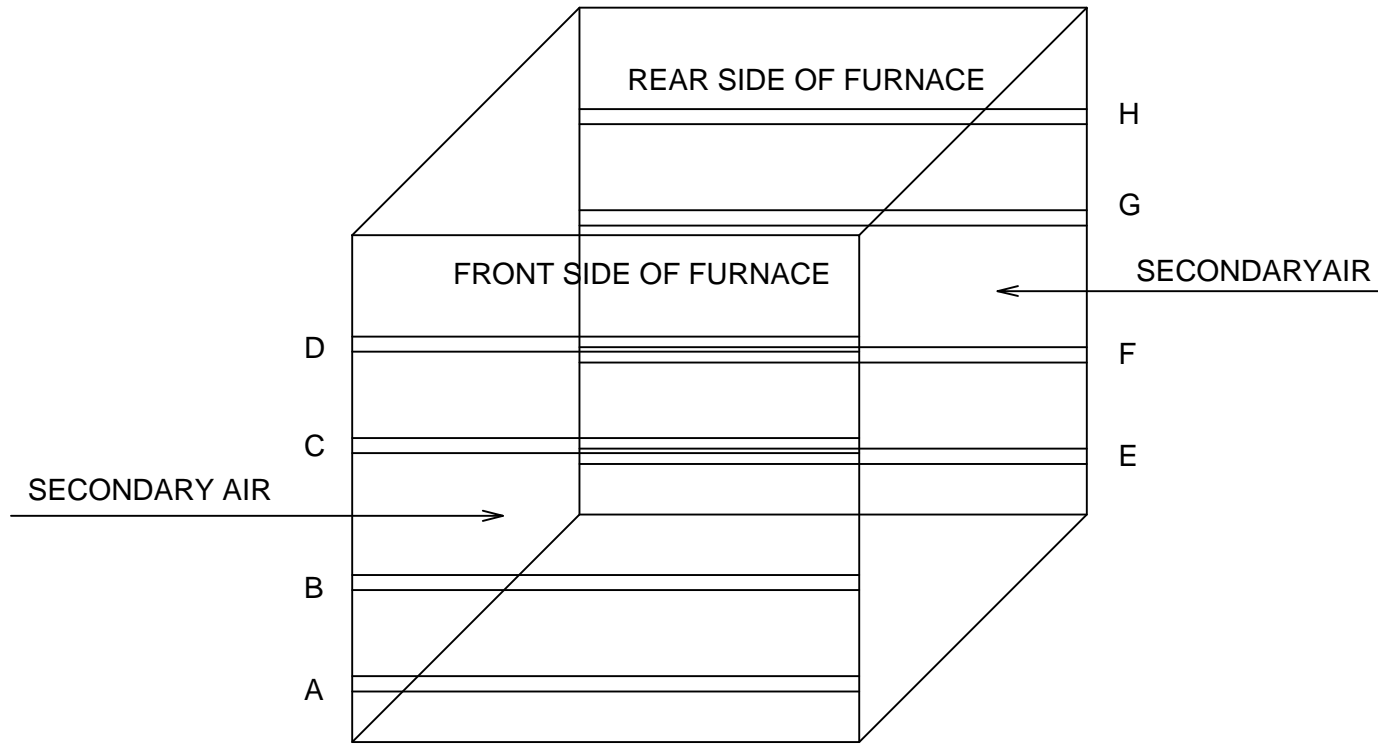
DATE 23.08.13

SHEET
NUMBER

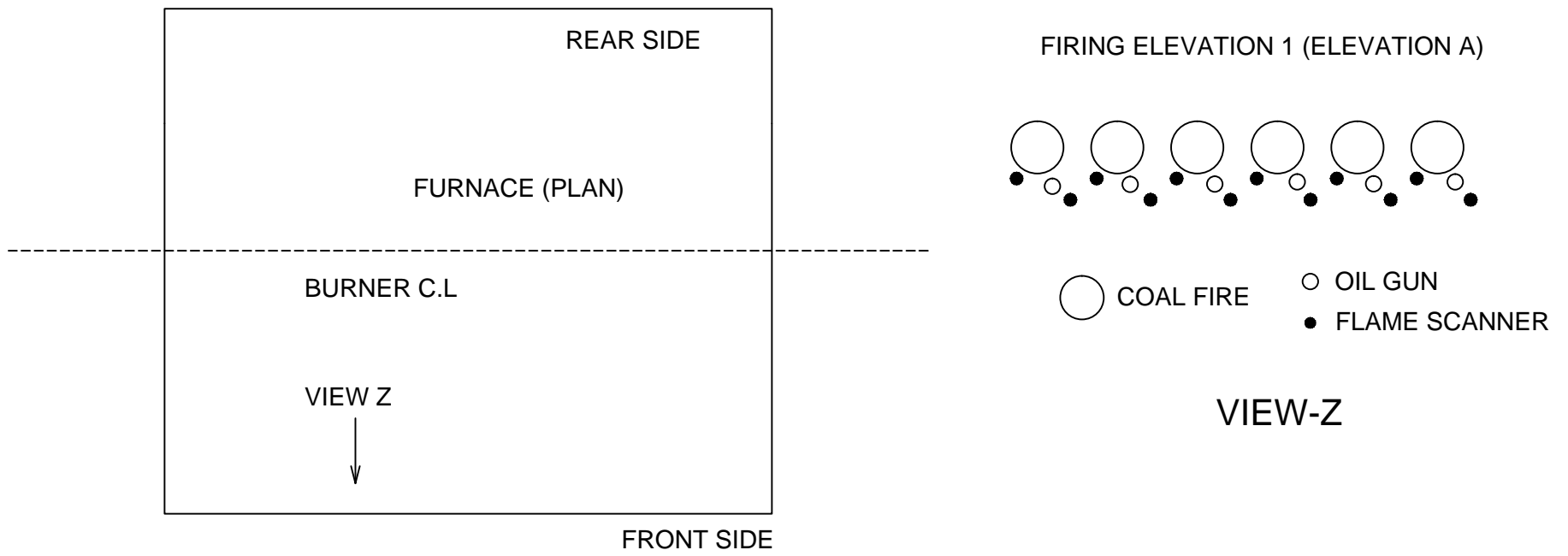
1 OF 3

BOILER OVERVIEW

FRONT AND REAR FIRED BOILER WITH
ELEVATION A, B, C, D, E, F, G & H



ARRANGEMENT OF BURNER MOUNTED ON FRONT WALL



TOTAL NO. OF BURNER : 6 (OIL) + 6 (COAL) = 12 NOS IN ELEVATION-A FRONT SIDE.
TYPICALLY FOR ELEVATION B TO H.



FARAKKA UNIT-4 & 5 R & M (2X500MW)

TITLE
FLAME SCANNER SYSTEM
COMPONENTS & ITS SCOPE

DRAWING
NUMBER

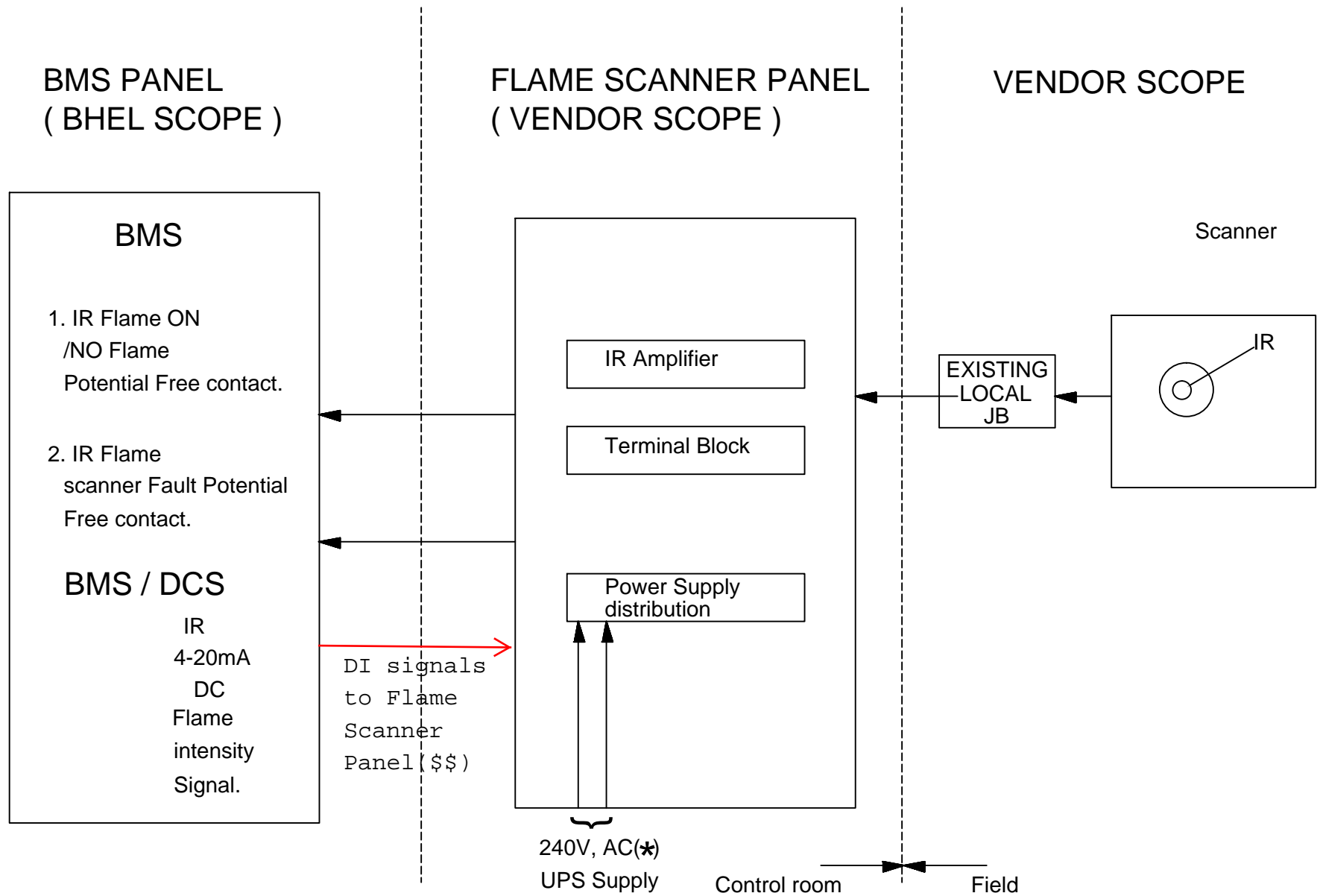
REVISION
NUMBER 00

DATE 23.08.13

SHEET
NUMBER

2 OF 3

TYPICAL CONFIGURATION OF FLAME MONITORING SYSTEM



NOTE:

01. Cable between flame scanner amplifier panel and bms panel (for flame/No flame contact & 4-20mA DC signal) is by BHEL (EDN) Scope. Vendor shall supply the sensor, prefab cable between sensor & Existing Local JB and cable between Existing Local JB and flame scanner amplifier panel.

(*) 02. 240V AC UPS Redundant feeder shall be provided by purchaser. Vendor to make provision to Acquire redundant feeder for using in the flame scanner panel

(\$\$) 03. As per existing philosophy as mentioned in Annexure-3. However, functional requirement of existing system must be met in all respect even if a different philosophy is adopted by the vendor.



FARAKKA UNIT-4 & 5 R & M (2X500MW)

TITLE
FLAME SCANNER SYSTEM
COMPONENTS & ITS SCOPE

DRAWING
NUMBER

REVISION
NUMBER 00 DATE 23.08.13

SHEET
NUMBER 3 OF 3



A4 - 11

ANNEXURE- 3 OF PS4102018

Purchase Specification for Flame Scanner panel

REV. NO. 00

PAGE 1 OF 3

1.0 EXISTING PHILOSOPHY OF FLAME SCANNER IN NTPC FSTPS ST-II

In NTPC Farakka St-II (2 x 500 MW), there are 8 x 6 = 48 nos of oil scanners and 8 x 6 = 48 nos of coal scanners in each boiler.

- All the oil and coal scanners are identical IR type (LOS- Line Of Sight).
- Each scanner has a signal processing card in remote panel.
- The signal processing card has the capability of generating three(3) MODES (namely F1, F2 and F3) of flame signals. For each Mode, it requires THREE (3) data (user settable) namely B-Background level, H-Higher limit of flicker frequency, and L-Lower limit of flicker frequency. These THREE(3) data (B, H & L) are different for three different Modes F1, F2 and F3 for each scanner.

For Oil scanners (Mode selection):

- F1 Mode- No IGNITOR START MEMORY SET (input signal from OIL GR).
- F2 Mode- IGNITOR START MEMORY SET (input signal from OIL GR).
- F3 Mode- No IGNITOR START MEMORY SET (input signal from OIL GR).

For Coal scanners (Mode Selection):

- F1 Mode- ALL BURNER LINE COAL VALVES CLOSED (input signal from COAL GR).
- F2 Mode- ANY BURNER LINE COAL VALVE NOT CLOSED AND (LESS THAN 6 COAL GR ON IN BLR OR BLI<60%) (input signal from COAL GR).
- F3 Mode- ANY BURNER LINE COAL VALVE NOT CLOSED AND (6 OR MORE COAL GR ON IN BLR AND BLI>65%) (input signal from COAL GR).

COPY RIGHT AND CONFIDENTIAL

The information on this document is the property of Bharat Heavy Electrical Limited. It must not be used directly or indirectly in anyway detrimental to the interest of the company.



A4 - 11

ANNEXURE- 3 OF PS4102018

Purchase Specification for Flame Scanner panel

REV. NO. 00

PAGE 2 OF 3

1.0.1 The philosophy of Scanner is as follows:

- All the scanners (oil and coal) are in F1 Mode when there is no firing in the boiler. F1ON means scanner sensing flame and F1OF means scanner sensing no flame. All the signal processing cards (96 nos) give the F1 Mode output to the BMS logic.
- The oil scanners go to F2 Mode when corresponding IGNITOR GR MEMORY SET occurs. F2ON means oil scanner sensing flame and F2OF means oil scanner sensing no flame. All the signal processing cards (6 nos of each oil elevation) give the F2 Mode output to the BMS logic.
- The coal scanners go to F2 Mode when ANY BURNER LINE COAL VALVE NOT CLOSED AND (LESS THAN 6 COAL GR ON IN BLR OR BLI<60%) occurs. F2ON means coal scanner sensing flame and F2OF means coal scanner sensing no flame. All the signal processing cards (6 nos of each coal elevation) give the F2 Mode output to the BMS logic.
- The coal scanners go to F3 Mode when ANY BURNER LINE COAL VALVE NOT CLOSED AND (6 OR MORE COAL GR ON IN BLR AND BLI>65%). F3ON means coal scanner sensing flame and F3OF means coal scanner sensing no flame. All the signal processing cards (6 nos of each coal elevation) give the F3 Mode output to the BMS logic.

1.0.2 Signal exchange between Remote Scanner Panel and BMS Logic IN DCS

For oil scanners

- DI signal *: IGNITOR START MEMORY SET (from DCS)
- DO signal: Output of the selected Mode either F1 or F2 (ON for Flame and OFF for No Flame) to DCS
- AO signal: Intensity value of Flame scanner in that Mode to DCS
- DO signal: Scanner detector or the complete circuitry in non-DCS panel healthy to DCS

Note: * -> The above DI signals for Oil Scanner are generated in each OIL elevation in BMS and given output as potential-free contact.

COPY RIGHT AND CONFIDENTIAL

The information on this document is the property of Bharat Heavy Electrical Limited. It must not be used directly or indirectly in anyway detrimental to the interest of the company.



A4 - 11

ANNEXURE- 3 OF PS4102018

Purchase Specification for Flame Scanner panel

REV. NO. 00

PAGE 3 OF 3

COPY RIGHT AND CONFIDENTIAL

The information on this document is the property of Bharat Heavy Electrical Limited.
It must not be used directly or indirectly in anyway detrimental to the interest of the company.

For coal scanners

- DI signal#: ALL BURNER LINE COAL VALVES CLOSED (from DCS)
- DI signal#: ANY BURNER LINE COAL VALVE NOT CLOSED
AND (LESS THAN 6 COAL GR ON IN BLR OR BLI<60%) (from DCS)
- DI signal#: ANY BURNER LINE COAL VALVE NOT CLOSED
AND (6 OR MORE COAL GR ON IN BLR AND BLI>65%) (from DCS)
- DO signal: Output of the selected Mode either F1 or F2 or F3
(ON for Flame and OFF for No Flame) (to DCS)
- AO signal: Intensity value of Flame scanner of that Mode (to DCS).
- DO signal: Scanner detector or the complete circuitry in
non-DCS panel healthy (to DCS)

Note: #->The above DI signals for Coal Scanner are generated in Master panel and given output as potential-free contact.

Indigenous & Imported
(Revision - 01)



Electronics Division, Bangalore

BHEL - EDN

TENDER DOCUMENTS

**COVERING, COMMERCIAL TERMS
& CONDITIONS & ANNEXURES**

FOR RFQ. NO.....



Bharat Heavy Electricals Ltd.,
 (A Government of India undertaking)
Electronics Division

PB No. 2606 , Mysore Road Bangalore , 560026 INDIA

Fax : +91 80 26989227
 +91 80 26989218
 ☎ : +91 80 26989191
 +91 80 26989142
 +91 80 26998781. . . .

Date:

M/s.

Attn. Mr/Ms.

Sub: Receipt of Tender Enquiry (RFQ) No..... dtd
with tender specifications for.....
Project / Destination.....
Due Date for submission of Offer.....

We are forwarding herewith our Enquiry (Request for Quotation) referred above along with following tender documents:

- 1 Enquiry header complete with item description, quantity and delivery schedule.
- 2 Purchase specifications.
- 3 Instructions to bidders (4 pages).
- 4 BHEL standard terms & conditions (Indigenous-11 pages & Imported - 7 pages) along with
 - a) Loading factors for non-compliance of Commercial Terms & Conditions (8 Pages) Annexure - I
 - b) Proforma for performance bank guarantee (for Indigenous-3 Pages & Imported - 2 pages) with instruction for PBG submission and with list of BHEL consortium bankers. Annexure-II, III(a), III(b) & III(C)
 - c) Guidelines for Reverse Auction procedure (wherever applicable)- 2 Pages. Annexure - IV.
 - d) List of International Airport. Annexure - V e) High Sea Sales - Annexure - VI

Please acknowledge receipt and confirm submission of complete offer within tender due date.

PURCHASE EXECUTIVE

Tender Enquiry (RFQ) No:..... dtd

Project:..... Item

(for bidder use only)
Acknowledgement of this Enquiry is mandatory.

We thankfully acknowledge receipt of above and we confirm as follows:

- () Our quotation will be Submitted on or before due date.
- () Our Enquiry has been forwarded to our authorised representative
 M/s..... who will quote on behalf of us.
- () We regret to quote for the said tender due to.....

VENDOR'S AUTHORISED SIGNATORY WITH SEAL

**PS: PL FAX THIS SHEET IMMEDIATELY AFTER RECEIPT OF THE RFQ TO OUR FAX NOS.
 0091 80 26989227/26989218 WITHOUT FAIL. THIS IS A MANDATORY REQUIREMENT**



Bharat Heavy Electricals Ltd.,

(A Government of India undertaking)

Electronics Division

PB No. 2606 , Mysore Road Bangalore , 560026 INDIA

Fax : +91 80 26989227

+91 80 26989218

☎ : +91 80 26989191

+91 80 26989142

+91 80 26998781 . . .

INSTRUCTIONS TO BIDDERS

BHEL RFQ No.& Date.....

Due date:..... Project:.....

Item:.....

BIDDER is requested to read the instructions marked as (✓) carefully and submit their quotation covering all the points:

✓ Deviation to this specification/item description, if any shall be brought out clearly indicating "DEVIATION TO BHEL SPECIFICATION" without fail, as a part of technical offer.

✓ **Quotation shall be submitted in :**

● ~~SINGLE PART BID (Techno-commercial offer with prices alongwith price summary in a sealed envelope).~~

OR

● **TWO PART BID (Techno-commercial i.e. UN-PRICED offer in a sealed envelope and Price offer in a separate sealed envelope alongwith Price Summary). Both these envelopes shall be again kept in a single sealed envelope. If priced offer is not submitted alongwith technical offer, offer is liable for rejection.**

Note : BIDDER shall ensure to superscribe the envelope with RFQ number, RFQ Date, RFQ Due date, Item Description and Project clearly & boldly on each envelope. BHEL standard Commercial Terms and conditions must accompany techno-commercial offer without fail. BHEL standard commercial terms & conditions duly filled, signed & stamped only to be sent. Your standard printed commercial terms not needed and will not be accepted by BHEL.

✓ *In case of two part bids, filled in commercial terms & conditions must accompany unpriced techno-commercial offer, failing which your offer is liable for rejection. Priced offer shall be complete in all respects indicating basic prices, applicable Taxes and Duties, Packing & forwarding charges (if applicable) and Freight & Insurance charges, etc. and compulsarily sent alongwith techno-commercial offer.*

✓ *In addition Bidder shall also quote for Erection & Commissioning Charges (E&C Charges), Documentation charges, Service Charges, Testing Charges (Type and Routine), Training Charges, Service tax, etc. wherever applicable. The price summary must indicate all the elements clearly, which will be considered for arriving at "Total cost to BHEL".*

✓ **Tender (quotation) to be dropped in the Tender Box with 3 compartments (Monday / Wednesday/ Friday) kept in our reception area with caption "CE, SC&PV, DEFENCE", before 13.00 Hrs. on due date mentioned on the RFQ (Request for quotation) Monday, Wednesday, Friday. Tenders will be opened on due date and time mentioned on the RFQ.**



- ✓ Note: For Freight charges, service tax applicable for direct despatches from vendor works (presently service tax is applicable on the 25% (twenty five percent)) of the freight amount.

DETERMINATION OF THE “TOTAL COST TO BHEL”: (Indigenous Portion)

Total basic value + Packing & Forwarding charges + Excise Duty+Education Cess+Sales Tax/VAT + Lumpsum Freight with service tax + Insurance (as per BHEL Insurance premium) + Service Tax (as applicable)+ loading factor value on total basic material value (for deviations to Commercial Terms & Conditions) = “TOTAL COST TO BHEL”.

Note : In case BHEL customer reimburse any one of the cost element like Excise duty, Sales Tax, Service Tax, Freight & Insurance charges, same will be removed for arriving at “TOTAL COST TO BHEL”, in turn the lowest bidder. However vendor has to quote for all the cost components.

The lowest technically & commercially acceptable offer arrived as above and meeting BHEL norms will be considered for further processing.

DETERMINATION OF THE “TOTAL COST TO BHEL”: (Imported Portion)

Total basic value in foreign currency+FOB Charges if any + cost insurance freight (CIF)+Customs duty+freight from Indian port to project destination + loading factor value on total basic FOB value (for deviation to comercial terms & conditions) =“TOTAL COST OF BHEL”.

Note : Exchange Rate ruling on the date of tender opening (unpriced/technical bid/part -1) will be considered for converting foreign currency to Indian currency. Exchange rates , which is received from Bank and updated in SAP system of BHEL - EDN will be considered.

In case PBG, Exchange rate on the date of tender opening (unpriced/technical/part-1) only will be considered for converting foreign currency to Indian currency and vice versa. Exchange rate received from Bank and updated in SAP system of BHEL - EDN will be considered.

- ✓ As far as possible, the quotations shall be free from corrections/overwriting. Corrections if any should be initialed with your seal. Any typographical error, totalling mistakes, currency mistake, multiplication mistake, summing mistakes observed in your priced bids, BHEL may consider whichever is beneficial to them for evaluation of the lowest quote. BIDDER shall honour the same in case Order is awarded for the said TENDER ENQUIRY / RFQ.
- ✓ **RISK PURCHASE CLAUSE** :- The purchaser at his discretion may also make purchase of the materials **NOT** supplied in time at the **RISK & COST** of the supplier. Under such situation, it will be obligatory on the part of the supplier who fails to supply the goods in time to make good to BHEL any loss due to risk purchase.

FOR INDIGENOUS SCOPE :

- ✓ This item is enquired for project, which qualifies for following benefits : **NORMAL EXCISE DUTY PAYABLE , NO BENEFIT.**
 - i) ~~Deemed export project, Mega power project and contract won against international competitive bidding basis (ICB), hence, Excise duty is fully exempted. Necessary documents for availing Excise duty exemption by suppliers will be furnished by BHEL.~~

Deemed Export, Meg and Non Meg Projects

- i) ~~In case vendor is importing any raw materials / components for the enquired item, same are eligible for~~



~~Zero Customs duty. As per para 8.7 of Hand Book of procedures of EXIM policy, BHEL will part the import licence with the vendors to obtain import licence by themselves and custom clear the raw materials / components by availing zero customs duty. Hence, please furnish list of raw materials / components to be imported by you with Quantity and CIF value (for which BHEL has to share import licence). The benefit due to the above shall be passed on to BHEL and confirmed in the quotation. If there are no imported raw materials / components, same shall be confirmed in the offer.~~

- ~~ii) Deemed Export contract, NOT a Mega Power Project but won against International Competitive Bidding (ICB) and hence this project is eligible for Terminal Excise duty benefit from DGFT as per present EXIM policy. Vendor to submit (a) Disclaimer certificate and (b) Copy of Excise Invoice attested by Suptd. of Central Excise (Signature in Blue ink with seal)~~
- ~~iii) Physical export contract eligible for complete exemption of Excise duty and Sales tax against submission of necessary documents by BHEL like ARE1 form and Form H.~~

FOR IMPORTED SCOPE :

- ✓ This item is required for project, which qualifies for following benefits : CUSTOM DUTY PAYABLE , NO BENEFIT .
 - ~~a) Deemed Export project eligible for "NIL" customs duty.~~
 - ~~b) Physical export project eligible for complete exemption of Customs duty.~~
 - ~~c) Project Imports project eligible for concessional customs duty.~~
 - ~~d) Captive Power plant eligible for Concessional Customs Duty.~~
 - ~~e) R & M project eligible for Concessional Customs duty.~~
 - ~~f) Merit duty applicable.~~
- ✓ BIDDER shall ensure to indicate clearly Excise duty, Education Cess, Sales Tax/VAT, Octroi, entry tax, Service Tax and freight charges as applicable, for the quoted items or services. In the absence of the clarity of these, any claim at a later date will not be entertained. Also any changes in taxes and duties after award of the contract, will not be considered except such are those, which are imposed by Govt. notification within the contractual delivery. Please note, seeking price amendments for change in Excise Duty due to crossing of Turnover limits will not be considered, under any circumstances.
- ✓ Quotations with, payment terms of "Advance" or "Inland letter of credit" will not be considered. & such offer / quotation is liable for rejection commercially.
- ✓ On award of contract if BIDDER seeks dilution of the ordered specification and if such deviation is acceptable to BHEL, BIDDER shall pass on mutually agreed price reduction to BHEL.
- ✓ Any dispute arising out of this, shall be referred to the sole arbitration of Head of Dept. (Materials Management-CE), EDN, Bangalore or any other officer nominated by him and his decision shall be final and binding on the parties. The venue of the arbitration in all cases shall be Bangalore.
- ✓ All suits in respect of this lie in the court of Bangalore only.
- ✓ BHEL reserves the right to RE-FLOAT/ REJECT / CANCEL this TENDER ENQUIRY (RFQ) without assigning any reason or cause thereof. Quotes received against this TENDER ENQUIRY are subject to and governed by all these terms and conditions. BHEL's decision will be final in awarding of the contract and binding.

- ✓ As per our recent purchase policy, any offer received after due date and time will be treated as "Late offer" and will be rejected. Hence pl. submit offer within due date and time to avoid rejection due to late submission. It is the responsibility of vendor to submit offer in tender box within due date and time. Offer sent by fax/e-mail/courier/post etc. Which is received late will be treated as late offer and BHEL will not be responsible for late offer. In case of the "Regret to Quote", it should be submitted in tender box within due date and time. Late offer will be returned to vendors in sealed condition.
 - ✓ Forward quotation / offer for this tender within due date and time. In case of 'not quoting' please send 'regret letter' which is a mandatory requirement. In case we do not receive offer / regret letter from you, we treat as 'Regret to quote' for this tender by you. In case of non receipt of "Regret Letter or Offer" it will be treated as "Regret to Quote" for this enquiry.
 - ✓ In case of rejection due to (a) commercial grounds or (b) technical grounds, the sealed price bids will be returned back to respective vendors after release of PO and receipt of order Acknowledgement from the successful bidder.
 - ✓ PBG to be sent by issuing bank directly to BHEL, Purchase department. PBG shall be from any one of the BHEL consortium banks only.
 - ✓ All bank charges to vendors account only,
 - ✓ Please quote your best, lowest, competitive, reasonable offer. Please indicate the prices in both figures & words.
 - ✓ Please sign the offers. Unsigned bids/offers may not be considered & the offer is liable for rejection.
 - ✓ Filled in BHEL standard terms and conditions should be submitted in original only. Zerox copy should not be attached.
 - ✓ In case of quotes submitted in multiple currencies, Bidder shall ensure submission of relevant filled in Indigenous/Imported BHEL standard commercial terms & conditions without fail.
 - ✓ If an Indian representative/associate/liaison office quotes on behalf of a foreign based BIDDER, such representative shall furnish compulsorily the following documents :
 - i) Authorization letter to quote and negotiate on behalf of such foreign-based BIDDER.
 - ii) Undertaking from such foreign based BIDDER that such contract will be honoured and executed according to agreed scope of supply and commercial terms and conditions.
 - iii) Undertaking shall be furnished by the Indian representative stating that the co-ordination and smooth execution of the contract and settlement of shortages/damages/replacement/repair of imported scope till system is commissioned and handedover to customer will be the sole responsibility of the Indian representative/associates/agent/liaison office.
- Note : Either the Indian agent on behalf of the foreign principal or the foreign principal directly could bid in a tender but not both. Further in cases where an agent participates in a tender on behalf of one manufacturer, he will not be allowed to quote on behalf of other manufacturer alongwith first in a subsequent / parallel tender for the same item.*
- ✓ Packing list should be provided inside each box.
 - ✓ All bank charges (inside and outside of India) are to vendors account only.
 - ✓ Customs clearance, customs duty payment will be to BHEL account after the consignment is received at Indian Airport / Seaport.

PURCHASE EXECUTIVE

**Electronics Division, Bangalore****BHEL STANDARD COMMERCIAL TERMS AND CONDITIONS FOR INDIGENOUS SCOPE OF SUPPLY****RFQ. NO. & DATE**

SL. NO.	TERMS	BHEL ACCEPTABLE TERM	BIDDER'S CONFIRMATION	DEVIATION IF ANY
01	PRICE BASIS	Firm i.e., from the date of PO to completion of supply if E&C is not applicable. If E&C is in supplier's scope, then the prices shall remain Firm till commissioning & handing-over of the complete system. (PVC clause not acceptable).	AGREE	
02	VALIDITY	Valid upto 8 weeks from the date of opening of price Bid (not technical bid), /date of Reverse Auction.	AGREE	
03	TERMS OF DELIVERY	Ex works (including Packing & Forwarding charges but excluding Taxes and Duties). Packing shall be roadworthy, best suited for multiple transshipments and to take care of transit damages. Indicate Station of despatch : Indicate place of manufacturing: Indicate type & method of packing being adopted:	AGREE _____ _____ _____	
04	DESTINATION	Items are for direct despatch to BHEL's customer site located at : _____ Road Permit if applicable will be issued by BHEL alongwith Despatch Clearance. <u>Hence, vendor may take a special note to indicate whether Central Sales Tax or Local State Sales Tax or VAT will be applicable.</u>	AGREE	
05	DOCUMENTS (Pl. see loading Factor)	Along with quotation : As called in purchase specification shall be furnished alongwith un-priced bid. If not called in Purchase Specification then vendor shall submit two sets of Original catalogues, Data sheets, Bill of materials, Dimensional drawings, mounting details and any other relevant documents with un-priced bid. After issue of PO: As called in Purchase specification for the complete scope of supply within two weeks on receipt of PO for BHEL/ customer/consultant approval. If not called in Purchase Specification then vendor shall submit two sets of Drawings, Bill of materials, data sheets, Catalogues, Quality plan, Test procedure and Type Test Report for the complete scope of supply within Two weeks on receipt of PO for BHEL / Customer / Consultant approval.	AGREE	



Electronics Division, Bangalore

BHEL STANDARD COMMERCIAL TERMS AND CONDITIONS FOR INDIGENOUS SCOPE OF SUPPLY

SL. NO.	TERMS	BHEL ACCEPTABLE TERM	BIDDER'S CONFIRMATION	DEVIATION IF ANY
06	<p>PENALTY (FOR DELAY IN SUBMISSION OF DOCUMENTS FOR BHEL / CUSTOMER APPROVAL):</p> <p>(Pl. see loading Factor)</p>	<p>In the event of delay in submission of complete set of documents (including soft copy wherever applicable) in required sets beyond 2 weeks from receipt of Purchase order (vendor to confirm date of receipt of PO in writing), Penalty @ 2% (two percent) per week but limited to a max. of 10% (Ten percent) value of the basic material value will be applicable.</p> <p>Penalty if applicable shall be deducted at the time of settlement of 75% payment.</p> <p>If penalty is applicable for duration of less than a week penalty @ 2% (two percent) of the basic material value will be charged.</p>	AGREE	
07	<p>EXCISE DUTY & EDUCATION CESS</p>	<p>To confirm whether applicable. If applicable, indicate prevailing rate of Excise duty and maximum rate of Excise duty (against proof of Excise Invoice) However, for calculation purpose and arriving at "Total cost to BHEL" maximum rate of Excise Duty will be considered. In case Excise Duty remain FIRM throughout the contract, the same shall be specifically indicated. Otherwise, maximum Excise duty will be considered for arriving at lowest bidder. However, reimbursement of Excise Duty shall be at actuals against proof of Excise Invoice only.</p> <p>Physical export contract eligible for complete exemption of Excise duty & Sales tax against submission of necessary documents by BHEL like ARE1 form and Form-H.</p>	<p>AGREE</p> <p>Excise Duty rate at present</p> <p>Maximum rate of Excise duty</p> <p>Education Cess.....%</p>	



Electronics Division, Bangalore

BHEL STANDARD COMMERCIAL TERMS AND CONDITIONS FOR INDIGENOUS SCOPE OF SUPPLY

SL. NO.	TERMS	BHEL ACCEPTABLE TERM	BIDDER'S CONFIRMATION	DEVIATION IF ANY
08	IN-CASE PROJECT IS DEEMED EXPORT, MEGA AND NON-MEGA AND WON AGAINST INTERNATIONAL COMPITITIVE BIDDING (ICB)	<p>In case vendor is importing any raw materials / components for the enquired item, same are eligible for Zero Customs duty. As per para 8.7 of Hand Book of procedures of EXIM policy, BHEL will part the import licence with the vendors to obtain import licence by themselves and custom clear the raw materials/ components by availing zero customs duty. Hence, please furnish list of raw materials / components to be imported by you with Quantity and CIF value (for which BHEL has to share import licence). The benefit due to the above shall be passed on to BHEL and confirmed in the quotation.</p> <p>If there are no imported raw materials/components, same shall be confirmed in the offer. Excise duty is fully exempted. Necessary documents for availing Excise duty Exemption by suppliers will be furnished by BHEL.</p>	<p>Agreed</p> <p>Furnished</p> <p>Yes, benefit passed on to BHEL in the quotation.</p> <p>We, confirm that there are no imported components.</p>	
09.	IN-CASE PROJECT IS DEEMED EXPORT, WON AGAINST INTERNATIONAL COMPITITIVE BIDDING (ICB) BUT NOT A MEGA PROJECT.	<p>The project is eligible for claiming Terminal Excise duty benefit from DGFT as per present EXIM policy. PL Confirm that you will submit (original)</p> <p>a) Disclaimer Certificate.</p> <p>b) Copy of Excise Invoice attested by Suptd of Central excise authorities with signature & seal, in Blue ink to enable BHEL to claim terminal Excise duty benefit from DGFT.</p>	CONFIRMED	
10	SALES TAX	<p>To confirm whether applicable. If applicable, indicate current rate of sales tax against form "C" For issue of form "C", vendor has to furnish "E1/E2" form</p> <p>Please confirm that "E1/E2 Sale form" will be submitted</p> <p>For physical export project, Sales Tax is exempted against submission of necessary documents by BHEL. However, vendor to indicate rate of Sales Tax applicable (against form 'C/37') for the item enquired.</p>	<p>AGREE</p> <p>Sales Tax rate at present.....%</p> <p>CONFIRMED</p>	

BHEL-EDN

VENDOR'S SIGNATURE WITH SEAL



Electronics Division, Bangalore

BHEL STANDARD COMMERCIAL TERMS AND CONDITIONS FOR INDIGENOUS SCOPE OF SUPPLY

SL. NO.	TERMS	BHEL ACCEPTABLE TERM	BIDDER'S CONFIRMATION	DEVIATION IF ANY
		<p>Note : Please see the state indicated above Sl. No. 4 (Page 1 of 11) to which materials to be despatched before indicating rate of Sales Tax.</p> <p>Furnish following :</p> <p>CST Regn No.</p> <p>LST Regn No.</p> <p>TIN No.</p>	INDICATED	
11	VALUE ADDED TAX	<p>Since it is inter-state movement of goods, VAT is not applicable. Only CST against form C is applicable.</p> <p>OR</p> <p>Both are in the same State, VAT is applicable please indicate VAT applicable @ _____%</p>	<p>AGREE</p> <p>QUOTED</p>	
12	OCTROI	To confirm whether applicable, if applicable indicate current rate of Octroi _____%	AGREE	
13	SERVICE TAX ONE & C & TRAINING CHARGES	<p>To confirm whether applicable, if applicable indicate current rate of Service Tax _____%</p> <p><i>Furnish following :</i></p> <p><i>Service Tax Regn. No.</i></p> <p><i>Confirmation that Service Tax register is maintained.</i></p>	<p>AGREE</p> <p>FURNISHED CONFIRMED</p>	
14	FREIGHT CHARGES	<p>Freight charges shall be to vendor's account. Please indicate Freight charges separately as lumpsum charges in priced offer, Plus service tax if any.</p> <p>Vendor's offer will be evaluated on "Total cost basis" including freight charges.</p> <p>Vendor shall book the consignment through their approved Road carriers on "Freight pre-paid" door delivery consignee copy attached basis, and freight charges to be claimed from BHEL through a</p>	<p>Agreed and quoted in lumpsum with Service Tax in price bid</p> <p>Service Tax _____ %</p>	

BHEL-EDN

VENDOR'S SIGNATURE WITH SEAL



Electronics Division, Bangalore

BHEL STANDARD COMMERCIAL TERMS AND CONDITIONS FOR INDIGENOUS SCOPE OF SUPPLY

SL. NO.	TERMS	BHEL ACCEPTABLE TERM	BIDDER'S CONFIRMATION	DEVIATION IF ANY
		<p>separate Invoice against proof of L/R copy and original money receipt and transporter bill to vendor received from the Transporter. The freight charges will be reimbursed to vendor, limited to freight quoted by the vendor in his offer or actual payment made to Transporter, whichever is lower.</p> <p>Vendor shall furnish following details alongwith Freight payment Bill :</p> <ul style="list-style-type: none"> a) Net weight b) Gross weight c) Volume of each package d) No. of packages e) Loose items, if any f) Distance from vendor's works to destination. <p>This is needed for justifying freight amount quoted by you.</p>		
15	<p>TRANSIT INSURANCE</p> <p>(To BHEL A/c)</p>	<p>By BHEL/BHEL power sector/Customer. Insurance Agency will be indicated in despatch clearance letter/fax/E-mail issued by BHEL. Immediately after despatch of material the vendor should intimate by fax/e-mail/ courier to the insurance agency directly for covering insurance and a copy of such intimation sent to insurance agency Indicated in the despatch instructions directly by vendor should be given to BHEL alongwith despatch documents for payment</p> <p><u>NOTE</u> : BHEL will not send insurance intimations to insurance company on your behalf. Hence it is your responsibility to intimate to insurance agency.</p>	AGREE	

BHEL-EDN

VENDOR'S SIGNATURE WITH SEAL



Electronics Division, Bangalore

BHEL STANDARD COMMERCIAL TERMS AND CONDITIONS FOR INDIGENOUS SCOPE OF SUPPLY

SL. NO.	TERMS	BHEL ACCEPTABLE TERM	BIDDER'S CONFIRMATION	DEVIATION IF ANY
16	DELIVERY PERIOD (Pl. see loading Factor)	Within 14_ weeks from the date of issue of document approval or manufacturing clearance by BHEL. whichever in earlier (or) Within _____ weeks from the date of issue of PO (in case document approval is not applicable)	AGREE	
17	WARRANTY (Pl. see loading Factor)	30 months from the date of despatch or 24 months from the date of commissioning whichever is earlier.	AGREE	
18	TERMS OF PAYMENT (FOR MATERIAL SUPPLY & TYPE TEST CHARGES) (Pl. see loading Factor)	<p>a) 75% basic + 100% Taxes , Duties and freight charges with 45 days credit from the date of receipt of complete set of original despatch documents. Original Performance Bank Guarantee (If applicable) to be sent by issuing bank directly to BHEL.</p> <p>Original consignee copy of L/R (lorry receipt) shall accompany the goods.</p> <p>Note : In case PBG is not furnished only 65% payment will be released against 75% claim without the consent of Vendor.</p> <p>This 10% basic amount withheld amount towards PBG will be paid against submission of supplementary invoice & Original PBG (or) against supplementary invoice without PBG after 30 months from the date of despatch provided BHEL Commercial Dept. confirms that there is no site issue pending for this P.O. items supplied by you.</p> <p>b) Balance 10% basic amount with 30 days credit from receipt of materials at site against consignee receipt certificate (CRC). i.e. acknowledgement/seal on backside of the LR for having received the consignment by consignee and proof of supply of O&M manuals in requisite sets, against a supplementary Invoice.</p> <p>c) Balance 15% basic amount with 30 days credit on completion of Erection & commissioning work on pro-rata basis against supplementary Invoice with "Proof of completion of E&C" (like MOM, Site protocol, Job completion certificate), signed by BHEL site office or Customer and your representative.</p> <p>Note : No advance will be paid and no inland L/C will be accepted. Payment thro' bank may not be acceptable to BHEL (as all payments or made thro' EFT only) Hence please avoid payment thro' bank.</p>	AGREE	

BHEL-EDN

VENDOR'S SIGNATURE WITH SEAL



Electronics Division, Bangalore

BHEL STANDARD COMMERCIAL TERMS AND CONDITIONS FOR INDIGENOUS SCOPE OF SUPPLY

SL. NO.	TERMS	BHEL ACCEPTABLE TERM	BIDDER'S CONFIRMATION	DEVIATION IF ANY
	TERMS OF PAYMENT (FOR E&C)	100% Lumpsum E&C / Installation charges with Service Tax (if applicable) shall be paid with 30 days credit on completion of Erection & commissioning work on pro-rata basis against submission of "Proof of completion of E&C"(like MOM, Site protocol, Job completion certificate), signed by BHEL site office or Customer and vendors' representative. Separate Invoice shall be submitted for charges towards E&C payment.	AGREE	
	TERMS OF PAYMENT (FOR TRAINING)	100% payable with 30 days credit on completion of Training. Separate invoice shall be submitted for Training charges	AGREE	
	TERMS OF PAYMENT (FOR ENGINEERING & DOCUMENTATION CHARGES)	100% with 30 days credit on approval of final documents. Separate invoice to be submitted for Engineering & documentation charges	AGREE	
19	GENERAL	BHEL has discontinued cheque payments and all payments will be through Electronic fund Transfer (EFT) only. Please provide necessary details (if you have not furnished earlier) in the BHEL's standard format.	AGREE	
20	SHORTAGES / DAMAGES	In the event of shortage/damage on receipt of goods and on opening of packages at site, all such shortages/damages shall be made good within reasonable time of such intimation and cost of such material will be reimbursed only on settlement of Insurance claim limited to insurance settled amount.	AGREE	
21	PENALTY (Pl. see loading Factor)	In the event of delay in agreed contractual delivery, penalty @ 2 % (two percent) per week but limited to a max of 10% (Ten percent) value of undelivered portion (basic material cost) will be applicable. Date of issue of inspection call by vendor along with test certificates / Test Reports / Certificate of Conformance / Calibration reports, as proof of completion of manufacturing will be treated as date of despatch for penalty calculation. In the absence of furnishing such relevant above cited document as proof of completion of manufacturing alongwith inspection call, actual date of Inspection will be considered as date of despatch, and BHEL will not be responsible for delay in actual date of inspection. Hence please issue inspection call with test certificates/ reports compulsorily to avoid penalty.	AGREE	

BHEL-EDN

VENDOR'S SIGNATURE WITH SEAL



Electronics Division, Bangalore

BHEL STANDARD COMMERCIAL TERMS AND CONDITIONS FOR INDIGENOUS SCOPE OF SUPPLY

SL. NO.	TERMS	BHEL ACCEPTABLE TERM	BIDDER'S CONFIRMATION	DEVIATION IF ANY
		<p>Penalty will be applicable after 14 weeks from the date of issue of document approval or manufacturing clearance whichever is earlier</p> <p>(or)</p> <p>Penalty will be applicable after _____ weeks from the date of issue of PO (in case document approval is not applicable)</p> <p>Penalty if applicable shall be deducted at the time of settlement of 75% payment.</p> <p>If penalty is applicable for duration of less than a week, penalty @2 % (two percent) of the basic material value will be charged.</p> <p>In case of vendor availing Duty concession under duty free licence under para No. 8.7 of EXIM policy procedure, any delay in furnishing documents for this purpose by BHEL will be suitably adjusted while calculating penalty.</p>		
22	<p>PERFORMANCE BANK GUARANTEE</p> <p>(Pl. see loading Factor)</p>	<p>Original PBG for 10% of the basic material cost shall be furnished in the BHEL prescribed format only (Annexure-II), directly by issuing bank to BHEL for processing 75% payment.</p> <p>PBG shall be valid for 30 months + 6 months claim period from date of despatch (totally 36 months from the date of despatch)</p> <p>PBG shall be from any of the BHEL consortium Bankers as per Annexure-III(b), and banker should send PBG directly to BHEL please see instruction for PBG submission attached - Annexure - III(a)</p> <p>Please indicate the Banker name from whom PBG will Issuing bank name be furnished without fail.</p> <p>PBG proforma enclosed. If PBG is not submitted as per enclosed BHEL standard proforma, i.e., PBG is submitted in Vendor's format (other than BHEL proforma) or quoted Revolving PBG, it will be treated as Vendor has not agreed for PBG clause (non submission of PBG only) and price will be loaded as per the loading factors enclosed(Annexure - I) to arrive at " total cost to BHEL" and BHEL reserves the right to commercially reject the offer when the item enquired demands performance bank guarantee.</p>	<p>AGREE</p> <p>Issuing Bank Name indicated</p>	

BHEL-EDN

VENDOR'S SIGNATURE WITH SEAL



Electronics Division, Bangalore

BHEL STANDARD COMMERCIAL TERMS AND CONDITIONS FOR INDIGENOUS SCOPE OF SUPPLY

SL. NO.	TERMS	BHEL ACCEPTABLE TERM	BIDDER'S CONFIRMATION	DEVIATION IF ANY
23	INSPECTION	<p>Prior written notice of atleast 7 days shall be given along with 2 sets of internal test certificates/COC and applicable test certificates. Materials will be inspected by BHEL-EDN-QS/CQS or M/s PDIL (BHEL authorised Inspection Agency) or Customer / Consultant or jointly by BHEL & Customer / consultant.</p> <p>All tests have to be conducted as applicable in line with approved Quality plan or QA Checklist or Purchase specification and original reports shall be furnished to BHEL-EDN, Bangalore for verification/acceptance and issue of despatch clearance.</p>	AGREE	
24	MODE OF DESPATCH	By road on door delivery Consignee Copy attached basis as per BHEL despatch instructions through your approved transporters, only on receipt of despatch clearance from BHEL.	AGREE	
25	DESPATCH DOCUMENTS	<p>Complete set of despatch documents in 3 sets shall be forwarded to BHEL directly. Despatch documents include Commercial Invoice, Excise Invoice (if ED is applicable), Lorry receipt (L/R), Packing list, Warranty certificate, Insurance intimation letter, "NIL" short shipment certificate, disclaimer certificate & attested excise invoice & Original Performance Bank Guarantee (Directly from issuing bank to BHEL).</p> <p>One set of Invoice, Packing list and L/R shall be faxed immediately after despatch to BHEL-EDN, Bangalore.</p>	AGREE	
26	O & M MANUALS	As built Drawings, O & M Manuals and other approved documents in 2 sets shall be furnished immediately after despatch directly to BHEL Purchase Dept., 1 set of above shall also be sent in soft media (CD ROM). Two sets of hard copies of above shall be directly despatched to site along with the material.	AGREE	

BHEL-EDN

VENDOR'S SIGNATURE WITH SEAL



Electronics Division, Bangalore

BHEL STANDARD COMMERCIAL TERMS AND CONDITIONS FOR INDIGENOUS SCOPE OF SUPPLY

SL. NO.	TERMS	BHEL ACCEPTABLE TERM	BIDDER'S CONFIRMATION	DEVIATION IF ANY
		<p>Note : Supply of above documents (O&M) in required No. of sets along with Despatch documents and material shall be indicated in packing list.</p> <p>If not mentioned BHEL may insist for submission in required sets once again.</p>		
27	SPLIT ORDERING	<p>BHEL reserve the right to split the Purchase order based on the itemwise lowest offer.</p> <p>(OR)</p> <p>Items will not be split on itemwise lowest offer. All items will be ordered as a package on a single Technically acceptable lowest Bidder.</p>	AGREE	
28	QUANTITY TOLERANCE	<p>Please indicate Quantity tolerance applicable in each of the line item wherever Quantity tolerance applicable for the Quoted items.</p> <p>For Impulse/seamless pipes one random length of + 6 mtrs. applicable for each variety of pipes.</p>	CONFIRMED	<p>QUANTITY TOLERANCE%PER VARIETY</p>
29	SLAB RATE	If the price quoted varies based on the quantity to be ordered, then slab rates may be quoted.	SLAB RATES INDICATED IN OFFER	SLAB RATES APPLICABLE/ NOT APPLICABLE
30	SPECIAL GLASS (EXCIST DUTY DRAW BACK FROM DGFT)	<p>Following documents (Original) shall be submitted for availing Excise duty draw back benefit from DGFT along with despatch documents to BHEL-EDN, Bangalore</p> <p>a) Disclaimer certificate as per the proforma, which will be, sent with the PO.</p> <p>b) Copy of Excise Invoice duly attested by Suptd of Central Excise (signature in blue ink & seal) Pl. refer enclosure to RFQ.</p>	AGREE	
31	ERECTION & COMMISSIONING (E & C) / INSTALLATION / ASSEMBLY AT SITE	<p>Indicate lumpsum charges (includes To & Fro Fare, Boarding, Lodging, Local Conveyance, etc.) for Supervision of Erection, Commissioning and handingover to customer. The quotation shall clearly indicate scope of work, likely duration of commissioning, pre-commissioning check list and service taxes if any to consider for arriving at total cost to BHEL.</p> <p>Note : If E&C is not quoted (wherever called for in the BHEL purchase specification) BHEL reserve the right to reject your offer.</p> <p>If lumpsum charges are not quoted, offer may be rejected.</p>	AGREE & CONFIRMED QUOTED IN LUMP SUM CHARGES IN PRICE BID	

BHEL-EDN

VENDOR'S SIGNATURE WITH SEAL



Electronics Division, Bangalore

BHEL STANDARD COMMERCIAL TERMS AND CONDITIONS FOR INDIGENOUS SCOPE OF SUPPLY

SL. NO.	TERMS	BHEL ACCEPTABLE TERM	BIDDER'S CONFIRMATION	DEVIATION IF ANY
32	REVERSE AUCTION	<p>Against this enquiry for the subject item/system with detailed scope of supply as per enquiry specifications, BHEL EDN reserves the right to follow REVERSE AUCTION PROCEDURE i.e. ON LINE BIDDING ON NETWORK, before finalising the Purchase order on technically competent bidders, as per the guidelines given in Annexure-IV.</p> <p>In case BHEL does not resort to Reverse Auction, the Price bids and price impacts (if any) already submitted and available with BHEL shall only be opened as per BHEL's standard practice without seeking anymore price impacts on account of BHEL not going for Reverse Auction and process further.</p>	AGREE	
33	SPECIAL CLAUSE APPLICABLE FOR EXPORT JOB ONLY	<p>Article packed with raw/solid wood packing material should be treated as per ISPM - 15 (fumigation) and accomplished by Phytosanitary/Fumigation certificate DESTINATION SEA PORT/ AIRPORT IN INDIA</p>	AGREE	

THE ABOVE FILLED-IN AND SIGNED DOCUMENT SHALL BE FURNISHED AS PART OF UN-PRICED CUM-TECHNICAL BID WITHOUT FAIL (IN ORIGINAL).

NOTE : LOWEST BIDDER WILL BE DECIDED BASED ON THE "TOTAL COST TO BHEL" BASIS INCLUDING LOADING FACTORS (FOR DEVIATIONS TO BHEL STANDARD COMMERCIAL TERMS & CONDITIONS).

BHEL-EDN

VENDOR'S SIGNATURE WITH SEAL



Electronics Division, Bangalore

BHEL STANDARD COMMERCIAL TERMS AND CONDITIONS FOR IMPORTED SCOPE OF SUPPLY

SL. NO.	TERMS	BHEL ACCEPTABLE TERM	BIDDER'S CONFIRMATION	DEVIATION IF ANY
01	COUNTRY OF ORIGIN & PLACE OF MANUFACTURE - RING	<p>PL INDICATE FOR THE TOTAL SCOPE OF SUPPLY COUNTRY OF ORIGIN</p> <p>PLACE OF MANUFACTURING (TOTAL PACKAGES)</p>	FURNISHED	
02	NAME & ADDRESS OF THE BIDDER : A) IN PURCHASE ORDER B) IN LETTER OF CREDIT		FURNISHED	
03	NAME ADDRESS OF FOREIGN BANK ACCOUNT NO. & SWIFT CODE		FURNISHED	
04	PRICE BASIS & CURRENCY	Firm i.e., from the PO date to completion of supply (Price variation Clause not acceptable). Currency :	AGREE	
05	VALIDITY	Valid up to 8 weeks from the date of opening of price Bid (not technical bid).	AGREE	
06.	TERMS OF DELIVERY	<p>Price offered shall be for goods packed and delivered F.O.B. (named International Airport/Seaport) including Packing, Forwarding, Handling, Ancillary charges like processing of Sight Draft / Letter of Credit (L/C), negotiation of Bank Documents, Export declaration, Certificate of Origin, etc. Packing shall be Seaworthy/Airworthy, best suited for transshipment and to take care of transit damages.</p> <p>Indicate Name of International Airport/seaport: Indicate method of packing done:</p>	AGREE	

BHEL-EDN

VENDOR'S SIGNATURE WITH SEAL



Electronics Division, Bangalore

BHEL STANDARD COMMERCIAL TERMS AND CONDITIONS FOR IMPORTED SCOPE OF SUPPLY

SL. NO.	TERMS	BHEL ACCEPTABLE TERM	BIDDER'S CONFIRMATION	DEVIATION IF ANY
		<p>Note : Name of Airport to be selected from any one of the ports indicated in Annexure-V which are acceptable BHEL ports.</p> <p>BHEL will do Customs Clearance after payment of Customs Duty as applicable at the time of customs clearance.</p>		
07	<p>DOCUMENTS (Pl. see loading Factor)</p>	<p>ALONG WITH QUOTATION : As called in Purchase specification shall be furnished alongwith un-price bid.</p> <p>If not called in Purchase Specification then vendor shall submit 2 sets of Original catalogues, Data sheets, Bill of materials, Dimensional drawings, mounting details and any other relevant documents with un-priced bid.</p> <p>After issue of PO : As called in Purchase specification. For the complete scope of supply within 2 weeks from receipt of PO for BHEL/ customer/consultant approval.</p> <p>If not called in Purchase Specification then vendor shall submit 2 sets of Drawings, Bill of materials data sheets, Catalogues, Quality Plan, Test procedure and Type Test report for the complete scope of supply within two weeks on receipt of PO for BHEL/ Customer/ Consultant approval.</p>	AGREE	
08.	<p>PENALTY (FOR DELAY IN SUBMISSION OF DOCUMENTS FOR BHEL/ CUSTOMER APPROVAL) : (Pl. see loading Factor)</p>	<p>In the event of delay in submission of complete set of documents (including soft copy) in required sets beyond 2 weeks from receipt of Purchase order, (vendor to confirm date of receipt of PO in Writing) Penalty @ 2% (Two Percent) per week but limited to a max of 10% (Ten percent) value of the basic material cost will be applicable.</p> <p>Penalty if applicable shall be deducted at the time of settlement of 90% payment.</p> <p>If penalty is applicable for duration of less than a week, penalty @ 2% (Two percent) of the basic material value will be charged.</p>	AGREE	



Electronics Division, Bangalore

BHEL STANDARD COMMERCIAL TERMS AND CONDITIONS FOR IMPORTED SCOPE OF SUPPLY

SL. NO.	TERMS	BHEL ACCEPTABLE TERM	BIDDER'S CONFIRMATION	DEVIATION IF ANY
09	TRANSIT INSURANCE	By BHEL. Insurance Agency Name, Policy No. will be indicated in PO. Vendor to send despatch details by fax to Insurance Agency after items are despatched without fail and copy of same to be submitted along with negotiable documents.	AGREE	
10	DELIVERY PERIOD (Pl. see loading Factor)	Within <u>14</u> weeks from document approval or manufacturing clearance by BHEL. whichever is earlier. (or) within _____ weeks from the date of issue of PO (In case document approval is not applicable).	AGREE	
11	WARRANTY (Pl. see loading Factor)	30 months from the date of despatch or 24 months from the date of commissioning whichever is earlier. Please indicate charges if any, in percentage of PO FOB value for additional warranty per annum, if BHEL decides to have at a later stage. Please note, additional warranty charges will not be considered for evaluation of Lowest bidder.	AGREE ----- %	
12	TERMS OF PAYMENT (FOR MATERIAL SUPPLY) (Pl. see loading Factor)	Against " SIGHT DRAFT " on presentation of documents to our Bankers. The payment terms are as follows : a) 90% is payable on negotiation of complete set of original documents including original performance Bank Guarantee (if applicable), b) Balance 10% on 60th day from the date of Air Way Bill / Bill of Lading & against specific authorisation by BHEL. c) Balance 15% with 30 days credit on completion of Erection & commissioning work on pro-rata basis against submission of "Proof of completion of E&C" (like MOM, Site protocol, Job completion certificate), signed by BHEL site office or Customer and your Indian representative. Note : No advance payment will be made. Seperate invoices to be submitted.	AGREE	
13	SHORTAGES/DAMAGES AT CUSTOMER SITE	In the event of shortage / damage on receipt of goods and on opening of packages at site all such shortages / damages shall be made good within reasonable time of such intimation and cost of such material will be reimbursed only on settlement of Insurance claim limited to insurance settled amount.	AGREE	

BHEL-EDN

VENDOR'S SIGNATURE WITH SEAL



Electronics Division, Bangalore

BHEL STANDARD COMMERCIAL TERMS AND CONDITIONS FOR IMPORTED SCOPE OF SUPPLY

SL. NO.	TERMS	BHEL ACCEPTABLE TERM	BIDDER'S CONFIRMATION	DEVIATION IF ANY
14	PENALTY (Pl. see loading Factor)	<p>In the event of delay in agreed contractual delivery, penalty @ 2 % (two percent) per week but limited to a max of 10% (Ten percent) value of undelivered basic material (excluding packing) portion will be applicable. Date of issue of test certificates / Test Reports / Certificate of Conformance / Calibration reports, as proof of completion of manufacturing will be treated as date of despatch for penalty calculation. Penalty will be applicable after <u>14</u> weeks from the date of document approval or manufacturing clearance, whichever is earlier.</p> <p>(or)</p> <p>Penalty will be applicable after _____ weeks from the date of issue of PO (in case document approval is not applicable)</p> <p>Penalty if applicable shall be deducted at the time of settlement of 90% payment. Penalty if any will be indicated in Despatch Clearance letter.</p> <p>If penalty is applicable for duration of less than a week, penalty @2 % (two percent) of the basic material value will be charged.</p>	AGREE	
15	PERFORMANCE BANK GUARANTEE (PBG) (Pl. see loading Factor)	<p>PBG for 10% of the basic material cost shall be furnished strictly in the BHEL prescribed format only (Annexure-II), along with the negotiating documents for payment as part of Despatch documents. Copy of PBG shall be furnished to BHEL by Fax.</p> <p>PBG shall be valid for 30 months + 6 months claim period (totally 36 months) from the date of despatch PBG proforma enclosed herewith (Annexure-II).</p> <p>If PBG is not submitted as per enclosed BHEL standard proforma, i.e., PBG is submitted in Vendor's format (other than BHEL proforma), it will be treated as Vendor has not agreed for PBG clause (non submission of PBG only) and price will be loaded as per the loading factors enclosed (Annexure - I) to arrive at " total cost to BHEL".</p>	AGREE	

BHEL-EDN

VENDOR'S SIGNATURE WITH SEAL



Electronics Division, Bangalore

BHEL STANDARD COMMERCIAL TERMS AND CONDITIONS FOR IMPORTED SCOPE OF SUPPLY

SL. NO.	TERMS	BHEL ACCEPTABLE TERM	BIDDER'S CONFIRMATION	DEVIATION IF ANY
16	TEST REPORTS / CALIBRATION REPORTS	<p>Shall be furnished / faxed immediately on completion of testing to BHEL for verification</p> <p>All tests have to be conducted as applicable in line with approved Quality plan or QA Checklist or Purchase specification and original reports shall be furnished to BHEL-EDN, Bangalore for verification / acceptance and issue of despatch clearance.</p>	AGREE	
17	MODE OF DESPATCH	BY Air/Sea freight on receipt of despatch clearance from BHEL and through BHEL approved Consolidator / freight Forwarder.	AGREE	
18	DOCUMENTS DESPATCH	<p>Complete set of despatch documents shall be forwarded to BHEL directly. Despatch documents include AWB, Invoice, Packing list, Country of origin certificate, Original performance Bank Guarantee, Warranty certificate, O & M manuals and Insurance intimation letter.</p> <p>One copy of Invoice, Packing list and Air Way Bill shall be faxed immediately after despatch. Also one copy of packing list to be kept inside each box for easy identification of material at site.</p> <p>Note : The Invoice shall be complete with item Nomenclature, Description, Unit, Quantity as per Purchase Order. Deviation to these will lead to financial losses to BHEL during Custom Clearance, which will have to be borne by Vendor only.</p>	AGREE	
19	WEIGHT & VOLUME	<p>Please indicate following for calculating Freight charges (approximate) :</p> <p>a) Total Net Weight of the package/s.</p> <p>b) Total Gross weight of the package/s.</p> <p>c) VOLUME : Length (L) X Breadth (B) X Height (H) in feet X No. of packages. Please keep one copy of packing slip inside box.</p>	FURNISHED	
20	O & M MANUALS	<p>As built Drawings, O&M Manuals and other approved documents in 2 sets shall be furnished immediately after despatch to BHEL directly.</p> <p>1 set of above also shall be sent in soft media (CD ROM) wherever called in specification</p> <p>Two sets of hard copies shall be directly despatched to site alongwith the material.</p> <p>Refer Specification for details.</p>	AGREE	

BHEL-EDN

VENDOR'S SIGNATURE WITH SEAL



Electronics Division, Bangalore

BHEL STANDARD COMMERCIAL TERMS AND CONDITIONS FOR IMPORTED SCOPE OF SUPPLY

SL. NO.	TERMS	BHEL ACCEPTABLE TERM	BIDDER'S CONFIRMATION	DEVIATION IF ANY
		Note : Supply of above documents (O&M) in required No. of sets along with Despatch documents and material shall be indicated in packing slip. If not metioned, BHEL may insist above in required No. of sets.		
21	SPLIT ORDERING	BHEL reserves the right to split the Purchase based on the itemwise lowest offer. (OR) Item will not be split on Itemwise lowest bidder hence all items will be ordered as a package on a single technically acceptable lowest bidder.	AGREE	
22	QUANTITY TOLERANCE	Wherever Purchase specification indicate quantity tolerance, it is to be confirmed. It may be confirmed as per Vendor's company norms. This is applicable for items having running length like Impluse Pipes, Cables, etc.For Impluse/ seamless pipes one random length of (+) plus 6 metres applicable for each variety.	CONFIRMED	QUANTITY TOLERANCE% PER ITEM
23	SLAB RATE	If the price quoted varies based on the quantity ordered, then slab rates may be quoted.	AGREE	
24	PARTIAL SHIPMENT	NOT ALLOWED / ALLOWED	NOTED	
25	TRANSHIPMENT	ALLOWED	NOTED	
26	DESPATCH CLEARANCE	BHEL will issue despatch clearance on receipt Test Certificates/calibration reports/ Certificates of Conformance and review / verification of the same. Goods shall not be despatched without obtaining despatch clearance from BHEL.	AGREE	
27	REPAIR OF COMPONENTS	For imported items, during commissioning/ warranty period, repair of failed components will be undertaken by your Indian representative M/s. _____ and if repair is not possible in India, then free replacement of components will be made by Foreign vendor without any commercial implications to BHEL.	AGREE INDIAN REPRESENTATIVE NAME INDICATED	

BHEL-EDN

VENDOR'S SIGNATURE WITH SEAL



Electronics Division, Bangalore

BHEL STANDARD COMMERCIAL TERMS AND CONDITIONS FOR IMPORTED SCOPE OF SUPPLY

SL. NO.	TERMS	BHEL ACCEPTABLE TERM	BIDDER'S CONFIRMATION	DEVIATION IF ANY
28	REMARKS	<p>Please note all the above will form part of Purchase Order and in case Vendor asks for payments, through letter of credit, all the above agreed terms will form part of letter of credit.</p> <p>In case Indian representative quotes on behalf of their Foreign counterpart, acceptance to the above terms are to be confirmed in writing by foreign vendor without fail and such confirmation shall be furnished as part of the un-priced bid.</p>	AGREE	
29	REVERSE AUCTION	<p>Against this enquiry for the subject item/system with detailed scope of supply as per enquiry specification, BHEL EDN may resort to REVERSE AUCTION PROCEDURE i.e. ON LINE BIDDING ON NETWORK, before finalising the Purchase order on technically competent and lowest bidder, as per the guidelines given in Annexure-VI.</p> <p>Reverse Auction procedure to decide the lowest bidder. In case BHEL does not resort to Reverse Auction, the Price bids and price impacts (if any) already submitted and available with BHEL shall only be opened as per BHEL's standard practice without seeking anymore price Impacts on account of BHEL not going for Reverse Auction.</p>	AGREE	
30	SPECIAL CLAUSE	Articles packed with raw/solid wood packing material should be treated as per ISPM-15 and accomplished by a phytosanitary Certificate.	AGREE	

THE ABOVE FILLED-IN AND SIGNED DOCUMENT SHALL BE FURNISHED AS PART OF UN-PRICED CUM-TECHNICAL BID WITHOUT FAIL.

NOTE : LOWEST BIDDER WILL BE DECIDED BASED ON THE "TOTAL COST TO BHEL" BASIS INCLUDING LOADING FACTORS (FOR DEVIATIONS TO BHEL STANDARD COMMERCIAL TERMS & CONDITIONS).

BHEL-EDN

VENDOR'S SIGNATURE WITH SEAL



Electronics Division, Bangalore

**ANNEXURE-I
LOADING FACTORS SHEET (8 pages)**

BHEL RFQ NO. & DATE:

DEVIATIONS ARE LIMITED TO FOLLOWING ONLY, FURTHER DEVIATION ON ANY OF THE FOLLOWING MAY LEAD BHEL TO REJECT THE OFFER UNILATERALLY ON COMMERCIAL GROUNDS.

NOTE: THIS LOADING FACTOR INDICATED BELOW WILL BE ADDED ON QUOTED PRICE TO EVALUATE THE LOWEST QUOTE (IN CASE OF DEVIATION TO BHEL'S TENDER SPECIFIED TERMS AGAINST EACH TENDER).

SL NO	COMMERCIAL TERMS	BHEL STANDARD TERM	IF YOU QUOTE	LOADING FACTOR FOR NON-COMPLIANCE OF BHEL STANDARD TERM
A.	FOR INDIGENOUS SCOPE OF SUPPLY.			
1	TERMS OF PAYMENT (WHERE SCOPE INCLUDES E&C):	a) 75% basic + 100% taxes, duties & freight charges with 45 days credit from the date of receipt of complete set of original despatch documents including Original Performance Bank Guarantee for 10% of the basic material value. (If applicable) to BHEL. b) Balance 10% with 30 days of receipt of materials at site and proof of supply of O&M manuals in required sets, against a supplementary Invoice and c) Balance 15% with 30 days credit from the date of completion of Erection & commissioning work on pro-rata basis against supplementary Invoice with "Proof of completion of E&C" (like MOM, Site protocol, Job completion certificate, signed by BHEL site office or Customer and your representative.	90% WITH 45 DAYS CREDIT ALONGWITH ADDITIONAL BG FOR 15% OF THE BASIC MATERIAL VALUE VALID TILL COMPLETION OF COMMISSIONING APART FROM PBG 10% OF THE BASIC MATERIAL VALUE. BALANCE 10% OF MATL COST WITH CREDIT 30 DAYS FROM THE DATE OF RECEIPT OF CONSIGNEE RECEIPT CERTIFICATE	NIL
		-SAME AS ABOVE-	100% WITH 45 DAYS CREDIT ALONGWITH ADDITIONAL BG. FOR 25% OF THE BASIC MATERIAL VALUE VALID TILL COMPLETION OF COMMISSIONING APART FROM PBG 10% OF THE BASIC MATERIAL VALUE	NIL



Electronics Division, Bangalore

SL NO	COMMERCIAL TERMS	BHEL STANDARD TERM	IF YOU QUOTE	LOADING FACTOR FOR NON-COMPLIANCE OF BHEL STANDARD TERM
		-SAME AS ABOVE-	90% - WITH 45 DAYS CREDIT WITHOUT ADDITIONAL BG. BALANCE 10% OF MATL COST WITH CREDIT 30 DAYS FROM THE DATE OF RECEIPT OF CONSIGNEE RECEIPT CERTIFICATE	15% OF THE BASIC MATERIAL VALUE.
		-SAME AS ABOVE-	100% WITH 45 DAYS CREDIT WITHOUT ADDITIONAL BG	17% OF THE 100% BASIC MATERIAL VALUE.
		-SAME AS ABOVE-	75% WITH LESS THAN 45 DAYS CREDIT. BALANCE 10% OF MATL COST WITH CREDIT 30DAYS FROM THE DATE OF RECEIPT OF CONSIGNEE RECEIPT CERTIFICATE BAL. 15% WITH CREDIT 30 DAYS FROM THE DATE OF RECEIPT OF COMMISSIONING COMPLETION CERTIFICATE	1.5% OF THE 75% BASIC MATERIAL VALUE.
		-SAME AS ABOVE-	90% WITH LESS THAN 45 DAYS CREDIT WITHOUT ADDITIONAL BG. BALANCE 10% OF MATL. COST WITH CREDIT 30 DAYS FROM THE DATE OF RECEIPT OF CONSIGNEE RECEIPT CERTIFICATE	16.35% OF THE BASIC MATERIAL VALUE (I.E. 15% +1.5% OF THE 90% BASIC MATERIAL VALUE)



Electronics Division, Bangalore

SL NO	COMMERCIAL TERMS	BHEL STANDARD TERM	IF YOU QUOTE	LOADING FACTOR FOR NON-COMPLIANCE OF BHEL STANDARD TERM
		-SAME AS ABOVE-	100% WITH LESS THAN 45 DAYS CREDIT WITHOUT ADDITIONAL. BG.	26.5% OF THE BASIC MATERIAL VALUE (I.E. 25% +1.5% OF THE 100% BASIC MATERIAL VALUE)
		-SAME AS ABOVE-	75% THROUGH BANK. BALANCE 10% OF MATL COST WITH CREDIT 30 DAYS FROM THE DATE OF RECEIPT OF CONSIGNEE RECEIPT CERTIFICATE BAL 15% WITH CREDIT 30 DAYS FROM THE DATE OF RECEIPT OF COMMISSIONING COMPLETION CERTIFICATE	10% OF THE 75% BASIC MATREIAL VALUE
		-SAME AS ABOVE-	90% THROUGH BANK. ALONGWITH BG FOR 15% OF THE BASIC MATERIAL VALUE VALID TILL COMPLETION OF COMMISSIONING APART FROM PBG 10% OF THE BASIC MATERIAL VALUE. BALANCE 10% OF MATL COST WITH CREDIT 30 DAYS FROM THE DATE OF RECEIPT OF CONSIGNEE RECEIPT CERTIFICATE	10% OF THE 90% BASIC MATERIAL VALUE
		-SAME AS ABOVE-	100% THROUGH BANK. ALONGWITH BG FOR 25% OF THE BASIC MATERIAL VALUE VALID TILL COMPLETION OF COMMISSIONING APART FROM PBG 10% OF THE BASIC MATERIAL VALUE.	10% OF THE 100% BASIC MATERIAL VALUE



Electronics Division, Bangalore

SL NO	COMMERCIAL TERMS	BHEL STANDARD TERM	IF YOU QUOTE	LOADING FACTOR FOR NON-COMPLIANCE OF BHEL STANDARD TERM
		-SAME AS ABOVE-	90% THROUGH BANK WITHOUT ADDITIONAL BG BALANCE 10% OF THE MATL COST WITH CREDIT 30 DAYS FROM THE DATE OF RECEIPT OF CONSIGNEE RECEIPT CERTIFICATE	24% OF THE BASIC MATERIAL VALUE (I.E. 15% + 10% OF THE 90% BASIC MATERIAL VALUE)
		-SAME AS ABOVE-	100% THROUGH BANK WITHOUT ADDITIONAL BG	35% OF THE BASIC MATERIAL VALUE (I.E. 25% +10% OF THE 100% BASIC MATERIAL VALUE)
2.	TERMS OF PAYMENT (WHERE SCOPE DOES NOT INCLUDE E&C)	a) 90% with 45 days credit from the date of receipt of complete set of original dispatch documents including Original Performance Bank Guarantee for 10% of the basic material value (If applicable) toBHEL. b) Balance 10% with 30 days credit from the date of receipt of materials at site and prof of supply of O&M manuals in required sets, against a supplementary Invoice.	100% WITH 45 DAYS CREDIT ALONGWITH ADDITIONAL BG FOR 10% OF THE BASIC MATERIAL VALUE VALID TILL RECEIPT OF MATERIAL AT SITE APRT FROM PBG 10% OF THE BASIC MATERIAL VALUE.	NIL



Electronics Division, Bangalore

SL. NO.	COMMERCIAL TERMS	BHEL STANDARD TERM	IF YOU QUOTE	LOADING FACTOR FOR NON-COMPLIANCE TO BHEL STANDARD TERM
		-SAME AS ABOVE-	100% WITH 45 DAYS CREDIT WITHOUT ADDITIONAL BG.	10% OF THE 100% BASIC MATERIAL VALUE
		-SAME AS ABOVE-	100% WITH LESS THAN 45 DAYS CREDIT WITHOUT ADDITIONAL BG.	11.5% OF THE BASIC MATERIAL VALUE (I.E. 10% + 1.5% OF THE 100% BASIC MATERIAL VALUE)
		-SAME AS ABOVE-	90% THROUGH BANK BALANCE 10% OF MATL COST WITH CREDIT 30 DAYS OF CONSIGNEE RECEIPT CERTIFICATE	10% OF THE 90% BASIC MATERIAL VALUE
		-SAME AS ABOVE-	100% THROUGH BANK ALONGWITH ADDITIONAL BG FOR 10% OF THE BASIC MATERIAL VALUE VALID TILL RECEIPT OF MATERIAL AT SITE APRT FROM PBG 10% OF THE BASIC MATERIAL VALUE	10% OF THE 100% OF THE BASIC MATERIAL VALUE
		-SAME AS ABOVE-	100% THROUGH BANK WITHOUT ADDITIONAL BG.	20% OF THE BASIC MATERIAL VALUE (I.E. 10% + 10% OF THE 100% BASIC MATERIAL VALUE)
<p>Note : Payment terms like (a) Advance (b) Inland L/C (c) Proforma Invoice (d) Against Exchange of dispatch documents (e) CAD i.e. Cash against documents and (f) High sea sales will not be accepted. It may lead to commercial rejection of your offer.</p>				
B.	FOR IMPORTED SCOPE OF SUPPLY :			
	TERMS OF PAYMENT (WHERE SCOPE DOES NOT INCLUDE E&C)	Against "SIGHT DAAFT" on presentation of dispatch documents to our Bankers. The payment terms are as follows; a) 90% of the FOB value is payable on negotiation of	100% AGAINST SIGHT DARFT	10% OF THE 100% FOB VALUE.

		complete set of original documents including original Performance Bank Guarantee for 10% of the FOB value (if applicable), b)Balance 10% of the FOB value on 60th day from the date of Air Way Bill or Bill of Lading & against specific authorization by BHEL.	-SAME AS ABOVE-	90% THROUGH LETTER OF CREDIT. BALANCE 10% FOR THE FOB VALUE ON 60 TH DAY FROM THE DATE OF AIR WAY BILL OR BILL OF LADING & AGAINST SPECIFIC AUTHORISATION BY BHEL. ALL BANK CHARGES OUTSIDE INDIA TO BENEFICIARY'S A/C.	2.5% OF THE 100% FOB VALUE
				Note : Payment terms like (a)Advance (b) Telegraphic transfer (T/T) (c) Confirmed L/C (d) CAD i.e. Cash against documents and (e) High sea sales will not be considered. It may lead to commercial rejection of your offer.	
C	PENALTY FOR DELAY IN SUBMISSION OF DOCUMENTS FOR BHEL / CUSTOMER'S APPROVAL (COMMON FOR INDIGENOUS / IMPORTED)	In the event of delay in submission of complete Set of documents (including soft copy) in required sets beyond 2 week from receipt of Purchase Order (supplier to confirm date of PO in writing), penalty @ 2% (two percent) per week but limited to a max. of 10% (Ten percent) value of PO will be applicable.	-SAME AS ABOVE-	If not agreed.	10% OF THE BASIC MATERIAL VALUE.
			-SAME AS ABOVE-	If max. 5% is agreed.	5% OF THE BASIC MATERIAL VALUE.
			-SAME AS ABOVE-	If @ ½% (half percent) per week but limited to a max. of 10% (Ten percent) is agreed.	7.5 % OF THE BASIC MATERIAL VALUE
			-SAME AS ABOVE-	If @ ½% (half percent) per week but limited to a max. of 5% (Five percent) is agreed.	10% OF THE BASIC MATERIAL VALUE.
			-SAME AS ABOVE-	If @ 1% (one percent) per week but limited to a max. of 10% (Ten percent) is agreed.	5% OF THE BASIC MATERIAL VALUE.
			-SAME AS ABOVE-	If @ 1% (one percent) per week but limited to a max. of 5% (Five percent) is agreed.	7.5 % OF THE BASIC MATERIAL VALUE.
D	PENALTY FOR DELAY IN DELIVERY (COMMON FOR	In the event of delay in agreed contractual delivery, penalty @ 2% (two percent) per week		IF NOT AGREED	10% OF THE BASIC MATERIAL VALUE.

	INDIGENOUS / IMPORTED)	but limited to a max of 10% (Ten percent) value of undelivered portion will be applicable. -SAME AS ABOVE-				5% OF THE BASIC MATERIAL VALUE.
					If max. 5% is agreed.	
					If @ ½% (half percent) per week but limited to a max. of 10% (Ten percent) is agreed.	7.5 % OF THE BASIC MATERIAL VALUE
					If @ ½% (half percent) per week but limited to a max. of 5% (Five percent) is agreed.	10% OF THE BASIC MATERIAL VALUE.
					If @ 1% (one percent) per week but limited to a max. of 10% (Ten percent) is agreed.	5% OF THE BASIC MATERIAL VALUE.
					If @ 1% (one percent) per week but limited to a max. of 5% (Five percent) is agreed.	7.5 % OF THE BASIC MATERIAL VALUE.
E	DELIVERY & PENALTY (COMMON FOR INDIGENOUS/IMPORTED)	Within.....weeks from the date of issue of document approval or manufacturing clearance by BHEL. (or) Within.....weeks from the date of issue of po (in case document approval is not applicable).			IF NOT AGREED FOR THE STIPULATED DELIVERY IN THE ENQUIRY (RFQ) BUT AGREED FOR PENALTY CLAUSE AS PER BHEL RFQ.	2% PER WEEK UPTO MAX OF 10% OF THE BASIC MATERIAL VALUE FOR THE QUOTED DELIVERY BEYOND THE STIPULATED DELIVERY IN THE ENQUIRY.
					IF SPECIFIED DELIVERY IN ENQUIRY (RFQ) IS AGREED BUT PENALTY CLAUSE IS NOT AGREED.	10% OF THE BASIC MATERIAL VALUE.
					IF SPECIFIED DELIVERY IN ENQUIRY (RFQ) IS AGREED & PENALTY CLAUSE IS AGREED BUT GRACE PERIOD IS SOUGHT.	2% PER WEEK UPTO MAX OF 10% OF THE BASIC MATERIAL VALUE FOR THE QUOTED GRACE PERIOD BEYOND THE STIPULATED DELIVERY IN THE ENQUIRY.
					IF BOTH DELIVERY & PENALTY NOT AGREED, AS PER BHEL TERMS.	10% OF THE BASIC MATERIAL VALUE PLUS 2% PER WEEK DELIVERY QUOTED BEYOND STIPULATED DELIVERY PERIOD
					Note : Any delivery quoted beyond 5 weeks from the stipulated delivery, offer is liable for rejection.	
F	PERFORMANCE BANK GUARANTEE (COMMON FOR INDIGENOUS / IMPORTED)	PBG for 10% of the basic material cost shall be furnished in the BHEL prescribed format only, along with 75 / 90% Invoice directly to the purchase dept. from the Bank.			IF NOT AGREED	10% OF THE BASIC MATERIAL VALUE.

		-SAME AS ABOVE-	IF 5% IS AGREED	5% OF THE BASIC MATERIAL VALUE.
		-SAME AS ABOVE-	OTHER THAN THE ABOVE	(10% MINUS THE AGREED MAX. %) OF THE BASIC MATERIAL VALUE WILL BE LOADED
		-SAME AS ABOVE-	PBG for 10% of the basic material cost furnished in Supplier's standard format, alongwith 75 / 90% Invoice directly to Purchase dept.	10% OF THE BASIC MATERIAL VALUE
G	WARRANTY	24 months from the date of despatch or 18 months from the date of commissioning whichever is earlier.	IF NOT AGREED FOR THE STIPULATED WARRANTY PERIOD IN THE ENQUIRY.	0.5% OF THE BASIC MATERIAL VALUE PER MONTH FOR THE DIFFERENCE IN PERIOD.



Electronics Division, Bangalore

PROFORMA OF PERFORMANCE BANK GUARANTEE
(FOR INDIGENOUS PURCHASE ORDERS)

ANNEXURE-II

- Note :
- 1) To be executed in Rs. 100/- Non-Judicial stamp paper.
 - 2) To be submitted by issuing bank to purchase Dept. directly. Please give BHEL address to banker.
 - 3) Do not enclose with Bank document.
 - 4) Modification & Omissions to this are not permitted.
-

PERFORMANCE GUARANTEE
(PROFORMA OF BANK GUARANTEE)

THIS DEED OF GUARANTEE made and executed on the _____ day of _____ (year), by the _____ (Bank), registered under the Companies Act 1956/Nationalised Bank constituted under the Banking Companies (acquisition and transfer of undertakings) Act constituted under the State Bank of India Act / Subsidiary Banks, Act, having its registered / head office at _____ represented herein by its Branch Manager / authorised representatives Sri. _____ & Sri. _____ (Hereinafter called 'guarantor' which term shall mean and include its successors and assigns)

IN FAVOUR OF BHARAT HEAVY ELECTRICALS LIMITED

_____ (Buyer's Name), a company registered under the companies Act, 1956 having its registered office at BHEL House at Siri Fort, New Delhi-110 049 and its Electronics Division at Mysore Road, Bangalore - 26 (hereinafter referred to as the 'Company' Which term shall include its successors and assigns):

Whereas the company has placed an order on _____ (State the name of the company / firm and its address) (hereinafter referred to as the 'Supplier' which term shall mean and include its liquidators, successors and assign) for the supply of system under order / Contract No _____ Dt _____.

AND WHEREAS the supplier has agreed to supply the materials and carryout the works as detailed and in accordance with the terms set out in the said order / contract.



Electronics Division, Bangalore

PROFORMA OF PERFORMANCE BANK GUARANTEE
(FOR INDIGENOUS PURCHASE ORDERS)

AND WHEREAS the company is not required to pay to the supplier a sum of Rupees _____ being the 10% of the value of the goods supplied / Works performed / Services rendered under the said order / contract between the supplier and the company, till the company is satisfied with the mechanical Warranties and the performance standards stipulated in the said order / contract between the company and the supplier has been duly fulfilled, except, against a Bank Guarantee for the said sum of Rs. _____ in favour of the company by reputed Bank, in which case the company has agreed to make payment to the supplier of the said sum of Rupees _____ being (....%) of the value of the goods supplied / Works performed / Services rendered under the agreement between the supplier and the company and the Guarantor has at the request of the supplier, agreed to furnish this Guarantee subject to the terms and conditions stated below :

NOW THIS DEED WITNESSES THAT IN pursuance of the above said agreement, the guarantor hereby agrees and covenents with company is as follows:-

- 1) That during the period this contract of Guarantee remains effectual, the guarantor shall be liable in respect of the amount due and owing to the company in respect of the payments to the extent of Rs _____ (in words) _____ against any loss or damage caused to or suffered by the company by reasons of any breach of the terms of the said order / contract / Agreement by the supplier.
- 2) The Guarantor hereby undertakes to pay the amounts and payable under this guarantee without any demur, merely on demand from the company intimating that the amount claimed is due by way of loss or damage caused to or suffered or would be caused or suffered by the supplier of any terms contained in the said order / contract. Any such demand made on the guarantor shall be conclusive as regards the amount due and payable by the Guarantor irrespective of the fact whether the Contractor / supplier admits or denies.
- 3) The Guarantor further agrees that the agreement herein contained shall remain in force and effect till all the supplies to be made / Works to be performed/Services to be rendered under the said order / contract / agreement are completed to the entire satisfaction of the company or till company certifies that the terms and conditions of the said order / contract / agreement have been fully and properly carried out by the said supplier and accordingly



Electronics Division, Bangalore

PROFORMA OF PERFORMANCE BANK GUARANTEE
(FOR INDIGENOUS PURCHASE ORDERS)

discharges the Guarantee. Unless a demand or claim under this guarantee is made on the guarantor in writing on or before the expiry of claim period indicated in clause 6 below, the guarantor shall be discharged from all the liability under this guarantee thereafter.

- 4) The guarantor further agrees with the company that the company shall have the fullest liberty without the consent of the guarantor and without effecting in any manner the obligations of the guarantor hereunder to vary any of the terms of the said order / contract / agreement or extend the time of performance by the said supplier from time to time or refrain from exercising the power exercisable by the company against the said supplier or to forebear or omit to enforce any of the terms and conditions relating to the said order / contract / agreement, and the guarantor shall not be relieved of its liability in whole or in part, by reason of any act, commission or forbearance on the part of the company or by reason of any such variation, or extension being granted to the said supplier or by reason of any such matter or thing whatsoever which under the law relating to sureties would but for this provision have effect of so relieving the guarantor.
- 5) The guarantor undertakes not to revoke this guarantee during its currency except with the previous consent of the company in writing.
- 6) Notwithstanding anything herein above obtained, the liability of the guarantor under these presents is restricted to Rs._____. The guarantee shall be in force till its expiry on _____ unless a demand is made on the guarantor within SIX months from the date of expiry, all the liability of the guarantor under this guarantee shall stand fully discharged. The decision of the claimant in regard to breach of contract is final and binding on the Bank.

IN WITNESS whereof, the guarantor, acting through its authorised representative has executed this deed of Guarantee on the day, month and year first above written.

(Seal of the Bank to be affixed)

WITNESS

1.

2.



Electronics Division, Bangalore

PROFORMA OF PERFORMANCE BANK GUARANTEE
(FOR FOREIGN PURCHASE ORDERS)

ANNEXURE-III (a)

BANK NAME AND ADDRESS

Electronic Division
Bharat Heavy Electricals Limited, (B.H.E.L.)
Mysore Road, P.B. No. 2606
BANGALORE - 560 026

Dear Sir,

Ref : CONTRACT PERFORMANCE GUARANTEE.

WHEREAS you have entered into a contract reference No & PO NO. _____
Date _____ with M/s _____ having its registered office
at _____ for the supply of _____ as detailed in your
purchase order No. _____ which is hereinafter referred to as "the said contract"
and WHEREAS M/s _____ has undertaken to produce a Bank
Guarantee for 10% (Tern Percent) of the contract price amounting to _____
(_____) to secure its obligatios to Electronics Division,
BHEL having its registered office at New Delhi for the performance of the contract including
the warranty of the equipment supplied, We _____
Bank, _____ hereby expressly, irrevocably and unreservedly
undertake and guarantee as principal obligors on behalf of M/s _____
that in the even Bharat Heavy Electricals Ltd. (B.H.E.L.) declares to us in writing that
M/s _____ has not fulfilled any obligation according to the
contractual obligation of the said contract, to pay you on demand and without demur to Bharat
Heavy Electricals Ltd., Electronics Division, Mysore Road, P.B.No. 2606, Bangalore - 560 026.,
India an amount of _____
(in words _____)
subject to as may be determined below :



Electronics Division, Bangalore

PROFORMA OF PERFORMANCE BANK GUARANTEE
(FOR FOREIGN PURCHASE ORDERS)

-
- 1) Notwithstanding any right M/s. _____ may have directly against you or any disputes raised by M/s _____
_____, Your written demand shall be conclusive evidence to us that repayment is due under the terms of the said contract and shall be binding on us.
- 2) We shall not be discharged or released from this undertaking and Guarantee by any arrangements, variations made between you and M/s. _____ with or without our consent and Knowledge or by any alteration in the obligations of M/s. _____ by any forbearance whether as to payment, time, performance or otherwise.
- 3) This guarantee shall remain valid until the end of six months after the close of the warranty period or until the same is reported by BHEL to us whichever is earlier.
- 4) We agree and undertake not to revoke this guarantee during its validity unless discharged in writing by you subject to the provision of clause (7) below :
- 5) This guarantee shall be a continuing guarantee subject to the foregoing and shall not be discharged by any change in the constitution of the Bank or M/s. _____.
- 6) This guarantee shall be governed by and constructed in accordance with the Laws of India.
- 7) At any time _____ Bank may render this guarantee null and void by paying to Bharat Heavy Electricals Ltd. the full amount being _____ (in words _____)
_____)

For and on behalf of Bank
by its Authorised Signatory

ANNEXURE - III(b)

INSTRUCTIONS FOR PBG SUBMISSION

**SUB : POINTS TO BE COMPILED FOR THE SUBMISSION OF BANK GUARANTEES /
PERFORMANCE BANK GUARANTEES**

Pursuant to the guidelines issued by BHEL corporate office and CVC the following points are to be taken care of during submission of BGs/PBGs. These conditions will be incorporated in the purchase orders :

- * BGs/PBGs of PSU banks in addition to BHEL consortium banks are only acceptable. List of BHEL Consortium Banks Enclosed.
- * In case of BGs/PBGs issued by non consortium PSU banks the same are to be enforceable in Bangalore.
- * In case of BGs/PBGs issued by Foreign banks the same to be confirmed by BHEL consortium bank in India.
- * It is insisted upon that BGs/PBGs issued by issuing bank on behalf of your company should be sent to BHEL EDN directly by the issuing bank under Registered Post (AD) with a covering letter of bank indicating contact no., fax no., E-mail ID, issuing officer name, address of the issuing bank etc.
- * Please ask the banker to post original PBG directly to : (Executive referred in PO)

DGM/Purchase, Purchase Dept., NEB IIInd (second) Floor, BHEL, Electronics Division,
Mysore Road, Bangalore - 560 026, Ph : 080 26989191
- * We will not accept any BGs/PBGs from your office directly. In case you collect BGs/PBGs from issuing bank and send to us, the same will be returned back to your office.
- * Expired BGs/PBGs will be returned after the expiry of the guarantee period including claim period or upon fulfillment of the relevant contract whichever is earlier.
- * Please give Purchase dealing Executive name, postal address, P.O. No., tel ph no. to bank and insist bank to write these details on the envelope.

**Electronics Division, Bangalore****Annexure-III (c)****BHEL MEMBER BANKS (LIST OF CONSORTIUM BANKS)****PBG SHALL BE ISSUED FROM THE FOLLOWING 22 BANKS ONLY:**

1	State Bank of India
2	Deutsche Bank AG
3	Canara Bank
4	HDFC Bank Ltd.,
5	Punjab National Bank
6	CITI Bank NA,
7	Bank of Baroda
8	Standard Chartered Bank,
9	State Bank of Hyderabad
10	ICICI Bank Ltd.
11	The Hongkong and Shanghai Banking Corporation Ltd.
12	IDBI Bank Ltd.
13	State Bank of Tranvancore
14	Corporation Bank
15	Kotak Mahindra Bank Ltd.
16	ABN AMRO Bank N.V.
17	Syndicate Bank
18	Indian Bank
19	Oriental Bank Of Commerce
20	UCO Bank
21	Central Bank of India
22	The Federal Bank Ltd.

Please Note : It is preferable if PBG is obtained from BHEL consortium Banks listed above. BHEL may accept PBG from other Nationalised Banks also which are not listed above. PBG will not be accepted from scheduled Banks and Co-operarive Banks.



Electronics Division, Bangalore

ANNEXURE - IV

GUIDELINES FOR REVERSE AUCTION PROCEDURE

Against this enquiry for the subject item/system with detailed scope of supply as per enquiry specifications, BHEL-EDN proposes to resort to "REVERSE AUCTION PROCEDURE" i.e., ON LINE BIDDING ON NETWORK, before finalizing the purchase order on technically competent bidders as per the guidelines given below:

1. Reverse Auction procedure shall be applicable for 2 Part bid tenders only.
2. For the proposed reverse auction, technically and commercially acceptable bidders only shall be eligible to participate, BHEL will engage the services of a service provider, having network all over the world. The online bidding can be done from the vendor's respective offices on their computers with Internet facility or at any of the cyber cafe, for which service provider's representative will provide all necessary training and assistance before commencement of on line bidding. Training is free of cost .
3. Vendors have to fax the Compliance form in the prescribed format (provided by Service provider) before start of Reverse auction. Without this, Reverse auction will not be started. Delay in faxing the above will lead to disqualification.
4. BHEL will send the Auto formulated EXCEL sheet which will help to arrive at "Total Cost to BHEL" like Basic Material cost, Packing & forwarding charges, Excise duty, Sales Tax/VAT, Freight charges, Insurance (by BHEL), Service Tax for Services,(-) ED disclaimer if any, and loading factors (for non-compliance to BHEL standard Commercial terms & conditions) for each of the vendor to enable them to fill-in the price and keep it ready for keying in during the Auction.
5. Reverse auction will be conducted on a mutually agreed schedule and time.
6. After Reverse auction is conducted , successful bidder has to Fax the Filled-in Excel sheet showing the final value accepted in Reverse Auction with breakup of each element as indicated in SI No. 4 above to the service provider within 48 hours of Auction without fail.

Note: No changes are allowed in Rate of Excise Duty, Sales Tax, Freight, Insurance, Service Tax and Loading factors after auction is completed.

7. After the reverse auction is conducted, the bidder whose price is lowest (total cost to BHEL, after considering all factors as per enquiry including Loading factors for deviations to BHEL standard Commercial Terms & conditions), BHEL will process the tender as per BHEL purchase norms. Purchase order will be issued without loading factors for deviations.

Note: BHEL will also reserve the right to open the sealed price offer submitted by the vendors for comparison purpose, if deemed necessary, without any intimation to the technically and commercially accepted bidders.

8. In case BHEL decides not to go for Reverse Auction procedure for this tender enquiry, the Price bids and price impacts (if any) already submitted and available with BHEL shall only be opened as per BHEL's standard practice without seeking anymore price Impacts on account of BHEL not going for Reverse Auction. Hence please quote your best lowest price in first instant itself.
9. Training by service provider will be given only once for the subsequent reverse auction. Training will not be given for a company which has already taken training for the FIRST REVERSE AUCTION conducted by BHEL-EDN, Bangalore.



Electronics Division, Bangalore

GUIDELINES FOR REVERSE AUCTION PROCEDURE

10. **Activities involved in Reverse Auction :**

- a) BHEL will inform the vendor in writing, the Service provider's information to enable them to contact & get trained. Alongwith the above information Business rules/policy also will be sent.
- b) Vendors have to contact Service provider and send Compliance form for having understood Reverse Auction procedure and ready for Auction.
- c) BHEL will send the Auto formulated Excel sheet (blank format without prices) as mentioned in SI No.4 above to the respective vendors.
- d) Vendors have to fill-in the Excel sheet (provided by BHEL) including Loading factors and get ready for Reverse Auction.
- e) Date & Time of Reverse Auction and Website address will be intimated by Service Provider.
- f) Bid decrement will be indicated in the Website after the Sealed bid is over and before start of Reverse Auction.
- g) Vendors will have to key-in the "Total cost to BHEL" (as worked out in the Excel sheet mentioned in SI No.4 above) in the "Sealed Bid" of the Reverse Auction within specified time duration of 20 to 30 minutes. After "Sealed Bid" auction, the lowest bidder's value or BHEL's start bid price will be the starting bid value for the commencement of Reverse Auction (English Reverse).
- h) At the end of Reverse Auction time (English Reverse), the lowest bidder value will be known on the network.
- i) Successful bidder has to fax the filled-in EXCEL sheet showing the final value accepted in the Reverse Auction with breakup of each component within 48 hours of completion of the Reverse Auction without altering any of the terms to the service Provider. Any alterations will be taken as sabotaging the tender process and will invite disqualification of vendor to conduct business with BHEL for the period of 2 years.
- j) The loading factors for non-conformance to BHEL standard commercial terms are only for arriving at lowest Bidder. In the event of Purchase order, same will be issued without loading factor values indicated in EXCEL Sheet. We repeat PO, will be issued for scope of supply+ Packing & Forwarding charges if any, Excise duty, Sales Tax, Service Tax for services and Freight & Insurance. Insurance will be to BHEL Account.

**Electronics Division, Bangalore****ANNEXURE- V****LIST OF INTERNATIONAL AIRPORTS.**

SNo	Country	Air Ports
1	Austria	Vienna, Linz, Graz.
2	Australia	Sydney, Melbourne, Perth
3	Belgium	Antwerp, Brussels
4	Canada	Toronto, Montreal
5	China	Shangai.
6	Cyprus	Larnaca.
7	Czech Republic	Prague (Via Frankfurt)
8	Denmark	Copenhagen
9	Egypt	Cairo
10	Finland	Helsinki
11	France	Paris (Roissy), Lyon
12	Germany	Darmstadt, Manihiem, Nurnberg, Hamburg, Stuttgart, Munich, Koln, Dusseldorf & Hannover, Frankfurt, Berlin.
13	Hongkong	Hongkong
14	Italy	Rome, Milan, Turin, Bologna, Florence
15	Ireland	Dublin
16	Isrel	Telaviv.
17	Japan	Tokyo, Osaka
18	Malaysia	Kaulalampur, Penang
19	Netherlands	Amsterdam, Rotterdam
20	Newzealand	Auckland
21	Norway	Oslo
22	Oman	Muscat
23	Philiphines	Manila
24	Romania	Bucharest
25	Russia	Moscow
26	Saudi Arabia	Riyad.
27	Singapore	Singapore
28	Slovakia	Bartislowa.

**Electronics Division, Bangalore****LIST OF INTERNATIONAL AIRPORTS.**

SNo	Country	Air Ports
29	South Africa	Johannesburg, Durban.
30	South Korea	Kimpo
31	Spain	Barcelona
32	Sweden	Stockholm, Gothenburg, Milano
33	Switzerland	Basle, Zurich, Geneva
34	Taiwan	Taipei
35	U.A.E	Dubai
36	U.K	London (Heathrow), Newcastle, Oxford, Cheltham, Bristol, Wellingborough, Birmingham, East Midland, Manchester, Leeds, Glasgow.
37	U.S.A	Newyork, Chicago, Sanfrancisco, Los Angeles, Atlanta
38	Ukraine	Kiev

ANNEXURE VI - HIGH SEA SALES

* Any delay in submission of complete/correct HSS documents to BHEL may cause heavy Demurrage charges and all Demurrage charges on a/c of incomplete/in correct HSS documents submission by vendor will be to vendor account only and the same will be recovered from any of the immediately available vendor Bills in BHEL-EDN

ANNEXURE - VI
PRESENT PROCEDURE FOR SALE IN TRANSIT (HIGH SEA SALES)

1. DATE OF THE STAMP PAPER SHOULD BE PRIOR TO THE AIR WAY BILL / BILL OF LADING DATE. STAMP PAPER VALUE SHALL BE IN RS.200/- NON JUDICIAL PAPER.
2. SALE AGREEMENT IN RS. 200/- STAMP PAPER AND NOTARISED WITH 2 WITNESSES HAS TO BE SIGNED BETWEEN BHEL AND THE PARTY IMPORTING MATERIAL AND THE DATE OF THE SALE DOCUMENTS SHOULD BE IN BETWEEN THE DATE OF HOUSE AIR WAY BILL / BILL OF LADING AND BEFORE LANDING OF THE GOODS IN INDIAN ORIGIN.
3. THE SALE AGENTS SHOULD DULY ENDORSE HOUSE AIR WAY BILL (HAWB) FOR AIR SHIPMENTS OR ORIGINAL BILL OF LADING (O.B.L.) FOR SEA SHIPMENTS, DELIVERY ORDER AND FOREIGN CURRENCY INVOICE IN FAVOUR OF BHEL-EDN.
4. SELLER SHOULD GIVE FOREIGN CURRENCY INVOICE FROM THE ORIGINAL CONSIGNOR. THE FOREIGN CURRENCY INVOICE VALUE SHOULD BE AT LEAST 2% (TWO PER CENT) LESS THAN THE INDIGENOUS RUPEE INVOICE VALUE IN EQUIVALENT FOREIGN CURRENCY.
5. SELLER SHOULD ALSO GIVE LETTER OF AUTHORISATION TO AIR CONSOL AGENTS FOR RELEASING DELIVERY ORDERS TO BHEL-EDN.
6. SELLER PARTY SHOULD ALSO GIVE A LETTER TO THE COMMISSIONER OF CUSTOMS FOR EFFECTING ABOVE SALE.
7. SELLING PARTY SHOULD ALSO GIVE A LETTER TO THE DEPUTY ASSESSOR (OCTROI) FOR EFFECTING ABOVE SALE IN FAVOUR OF BHEL.
8. DESCRIPTION OF ITEM (NOMENCLATURE), UNIT & QUANTITY IN BOTH FOREIGN CURRENCY & THE RUPEE INVOICE IN RUPEE SHALL BE EXACTLY AS PER PO DESCRIPTION OF ITEM, QUANTITY AND UNIT. THE INDIGENOUS INVOICE VALUE SHALL BE EXACTLY AS PER PO VALUE.
9. PRICES SHOULD BE C.I.F., MUMBAI BASIS.
10. I.E.C., C.S.T., K.S.T. NOS. TO BE MENTIONED.
11. NOTE: THE FOLLOWING SHALL BE INCLUDED IN THE HIGH SEA SALES AGREEMENT:

“THE BUYER ALSO UNDERTAKE DISCHARGES, THE OBLIGATION AND FULFILLMENT OF CONDITIONS, IF ANY, ATTACHED TO THE IMPORTATION, ASSESSMENT AND CLEARANCE OF THE GOODS IN TERMS CUSTOMS TARIFF ACT 1975, THE CUSTOMS ACT 1962 & RULES & REGULATIONS MADE THEREUNDER AND OTHER RELEVANT ACTS, ORDERS, NOTIFICATIONS”.

REMARKS: IN CASE VENDOR NEEDS ANY CLARIFICATIONS ON THE ABOVE, THE SAME MAY BE SOUGHT IN WRITING.