



An ISO 9001
Company

Bharat Heavy Electricals Limited

(High Pressure Boiler Plant)

Tiruchirappalli – 620014, TAMIL NADU, INDIA

MATERIALS MANAGEMENT

TITLE Graphite Alloy Bushings/Bearings	Phone: +91 431 257 7897 Fax : +91 431 252 0719 Email : sachinsaini@bheltry.co.in
---	---

	Reference Number: Enquiry 1801401719	Enquiry Date: 02.12.2014	Due date for submission of quotation: 15.01.2015
--	---	---	---

You are requested to quote the Enquiry number date and due date in all your correspondences. This is only a request for quotation and not an order

BHEL/Trichy is looking for empanelment of new vendors for supply of “Graphite Alloy Bearings/Bushings as per attached specifications and drawings.”

BHEL commercial terms & conditions with Price Bid formats and all annexure can be downloaded from BHEL web site http://www.bhel.com or from the Government tender website http://tenders.gov.in (public sector units) Bharath Heavy Electricals Limited) under enquiry reference “XXXXXXXXXX ”	
Tenders should reach us before 14:00 hours on the due date Technical bid will be opened at 14:30 hours on the due date Tenders would be opened in presence of the tenderers who have submitted their offers and who may like to be present.	Yours faithfully, For Bharath Heavy Electricals Limited DGM / MM



BHARAT HEAVY ELECTRICALS LIMITED

(A Government of India Undertaking)
HIGH PRESSURE BOILER PLANT
PURCHASE DEPARTMENT - FOSSIL BOILERS
THIRUCHIRAPALLI - 620014
TAMILNADU (INDIA)

PHONE :2577359
GRAMS : BHARATELEC
FAX NO: 2520719
E-mail:
Web:


Page
1/2

429-002/A

Vendor Code : 23505	Enquiry No	Enquiry Date	Due Date for Quotation
Vendor Name : Open Tender Dummy Code Australia	1801401719 - 13	02.12.2014	15.01.2015
Please quote Enquiry No, Date and due date in all correspondences. This is only a request for quotation and not an order. <u>Bid should be submitted in Two Parts. 1. Techno-commercial Bid (Part-I) and 2. Price Bid (Part-II) in a separate sealed cover and both the covers must be placed in a Third Cover and Sealed. Our Enquiry No., Enq. date & Enq. Due date must be written on all Three covers.</u>			

Item	Description	Unit	Quantity	Delivery Quantity	Schedule Date
10	A171414580203005 Graphite alloy Damper Bearing as per BHEL Drawing 4-45-320-01618A/Rev.01 to be installed in Damper assembly of Windbox in rotating shafts of dia 25mm for continuous operation in environment of 350-400 deg.C hot secondary air.	NO	80.000	80.00	15.06.15
20	A171414580203006 Graphite alloy bushings as per Variant No.03 of enclosed drawing 3-45-000-01273A/Rev.01 and technical specification TFS:1001A/Rev.01.	NO	56.000	56.00	15.06.15
30	A171414580203007 Graphite alloy bushings as per Variant No.08 of enclosed drawing 3-45-000-01283A/Rev.01 and technical specification TFS:1001A/Rev.01.	NO	72.000	72.00	15.06.15
40	A171414580203008 Graphite alloy bushings as per Variant No. 09 of enclosed drawing 3-45-000-01283A/Rev.01 and technical specification TFS:1001A/Rev.01.	NO	72.000	72.00	15.06.15
50	A171414580403005 Graphaite alloy Damper Bearing as per BHEL Drawing 4-45-320-01618A/Rev.01 to be installed in Damper assembly of Windbox in rotating shafts of dia 25mm for continuous operation in environment of 350-400 deg.C hot secondary air.	NO	16.000	16.00	15.06.15
60	A171414580403006 Bushings (Graphite alloy) as per Variant No. 03 of enclosed drawing 3-45-000-01273A/Rev.01 and technical specification TFS:1001A/Rev.01.	NO	16.000	16.00	15.06.15
70	A171414580403007	NO	16.000	16.00	15.06.15

The offers should reach us 30 minutes before the time of opening of tenders. The offers will be opened at 14.30 hrs on the due date of tender in the presence of tenderers who have submitted their offer and who may like to be present for the tender opening. Late and delayed offers are liable to be rejected.

Yours faithfully,
For **BHARAT HEAVY ELECTRICALS LIMITED**

SACHIN SAINI
Engineer
MANAGER / ~~Material Management~~ / BOI
(FOSSIL BOILERS)
BHEL, TIRUCHY - 620 014.
Yours faithfully,



BHARAT HEAVY ELECTRICALS LIMITED

(A Government of India Undertaking)
HIGH PRESSURE BOILER PLANT
PURCHASE DEPARTMENT - FOSSIL BOILERS
THIRUCHIRAPALLI - 620014
TAMILNADU (INDIA)

PHONE :2577359
GRAMS : BHARATELEC
FAX NO: 2520719
E-mail:
Web:

1801401719 / 02.12.2014

23505

Bushings (Graphite alloy) as per Variant No.08
of enclosed drawing
3-45-000-01283A/Rev.01 and technical
specification TFS:1001A/Rev.01.

80	A171414580403008	NO	16.000	16.00	15.06.15
----	------------------	----	--------	-------	----------

Bushings (Graphite alloy) as per Variant No. 09
of enclosed drawing
3-45-000-01283A/Rev.01 and technical
specification TFS:1001A/Rev.01.

General Note:

This is an open tender and same has been published on BHEL & NIC website http://www.bhel.com/tender/tender_home.php & <http://tenders.gov.in> and also in leading dailies. All corrigendums will be published on BHEL & NIC websites only, vendors are requested to visit these websites regularly.

Enclosures:

1. Technical specification TFS:1001A/Rev.01
2. Drawing no 3-45-000-01273A/rev.01
3. Drawing no 3-45-000-01283A/rev.01
4. Drawing no 4-45-320-01618A/rev.01
5. Annexure I to VI

"LD clause has to be confirmed without fail."

The offers should reach us 30 minutes before the time of opening of tenders. The offers will be opened at 14.30 hrs on the due date of tender in the presence of tenderers who have submitted their offer and who may like to be present for the tender opening. Late and delayed offers are liable to be rejected.

Yours faithfully,
For **BHARAT HEAVY ELECTRICALS LIMITED**

Engineer
Materials Management
MANAGER / PURCHASE
(FOSSIL BOILERS)
Yours faithfully.

EO
02



1.0 Scope:

Design, manufacture and supply of Graphite alloy bushings/bearings used in low speed rotating shafts of tilt mechanism and damper assembly of windboxes / burners. Bushings shall be supplied in machined condition to meet the dimensional requirements as per the Variant or Style # indicated in the enquiry.

2.0 Purpose

Graphite alloy bushings are used in shafts, where maintenance of bushings/bearings is remote.

3.0 Technical parameters

Material	Graphite alloyed with metal
Mechanical Properties	Tensile Strength: Approx. 6000 psi Compressive Strength: Approx. 21000 psi Hardness: Scleroscope scale 40-50 Apparent density: Approx. 2.3 g/cc Coefficient of thermal expansion: Approx. 5.6×10^{-6} mm/mm °C
Working temperature	400 °C
Features	Self-lubricating, dimensionally stable at all working temperature conditions, low coefficient of friction, shall work without any lubrication
Dimensions	Shall be as per the specified variant of BHEL drawing 3-45-000-01273A, 4-45-320-01618A or 3-45-000-01283A as mentioned in enquiry.

4.0 Packing

Vendor shall use liberal packing material for shipment with proper handling instructions.

5.0 Documents required

Vendor shall submit point-wise confirmation to the specification.

6.0 Inward Inspection

Visual inspection

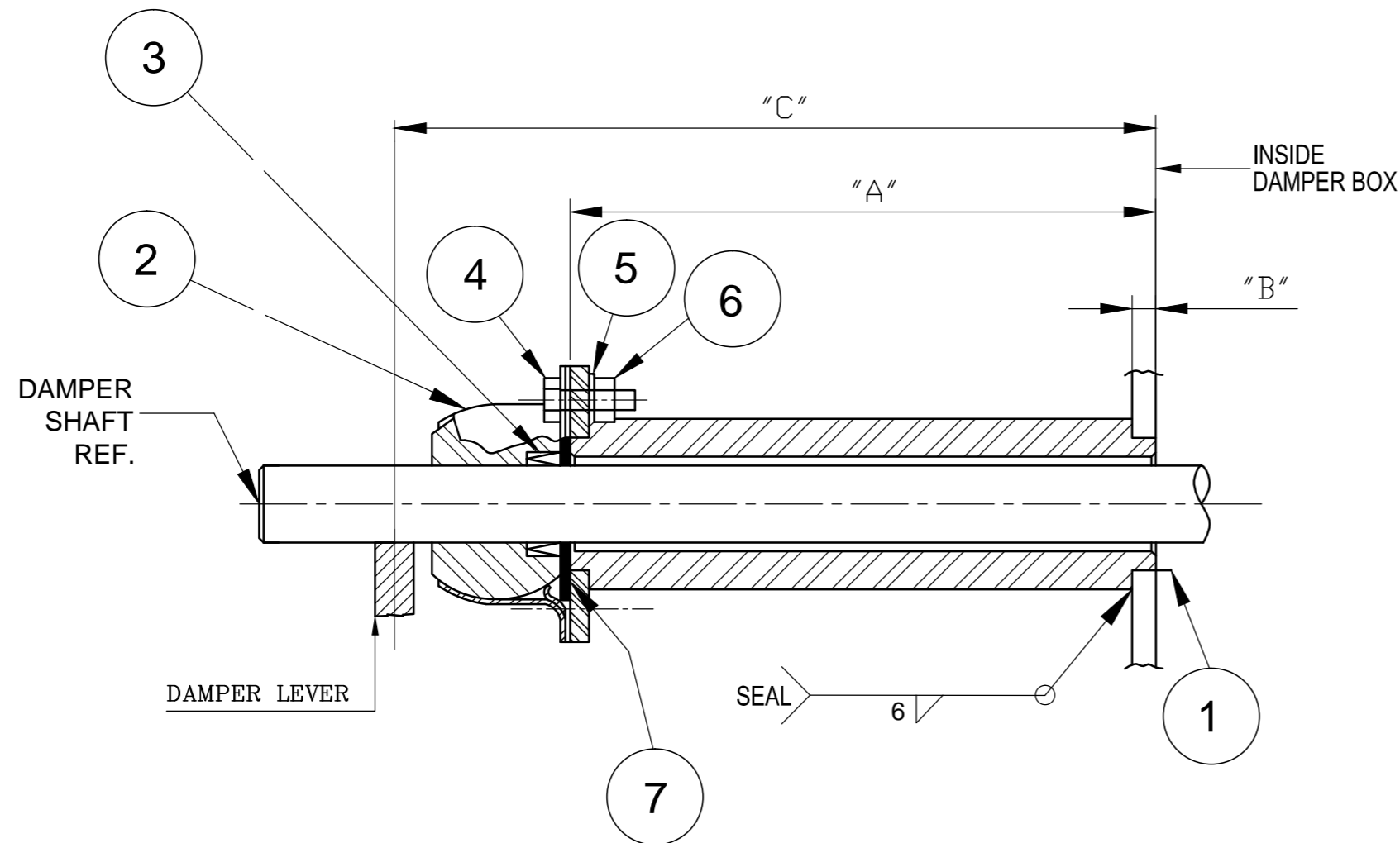
Dimensional check

Check for any damages

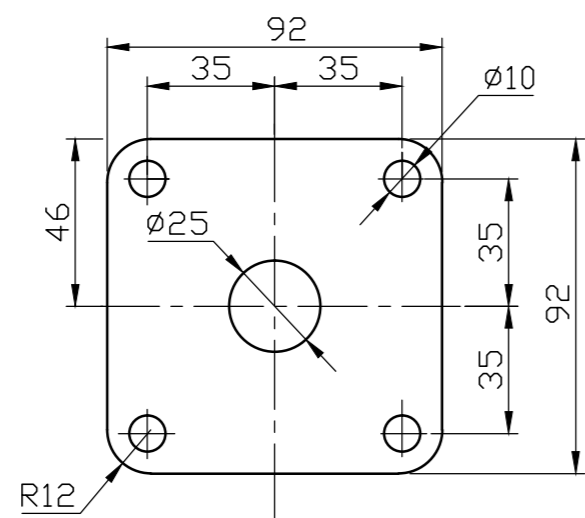
Prepared	Checked	Approved

NOTES:

1. ALL DIMENSIONING AND TOLERANCING AS PER ASME Y14.5M-1994 UNLESS OTHERWISE SPECIFIED.
 - a. ALL DIMENSIONS ARE IN mm.
 - b. TOLERANCES ON DIMENSIONS ± 0.1
 - c. TOLERANCE ON ANGULAR DIMENSIONS $\pm 0^{\circ} 30'$
3. WELD PER D1.1 USE E-7018 ELECTRODE.



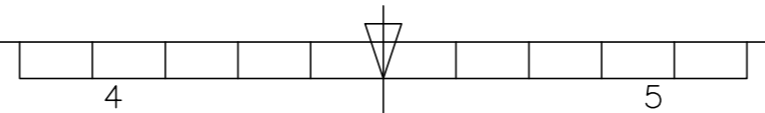
VAR.NO.	DIM "A"	DIM "B"	DIM "C"	INSUL THK	TOT. WEIGHT
01	202 197	18 10	255	127	5.637
02	154	10	203	100	5.530
03	275 272	13 10	330	200	6.557

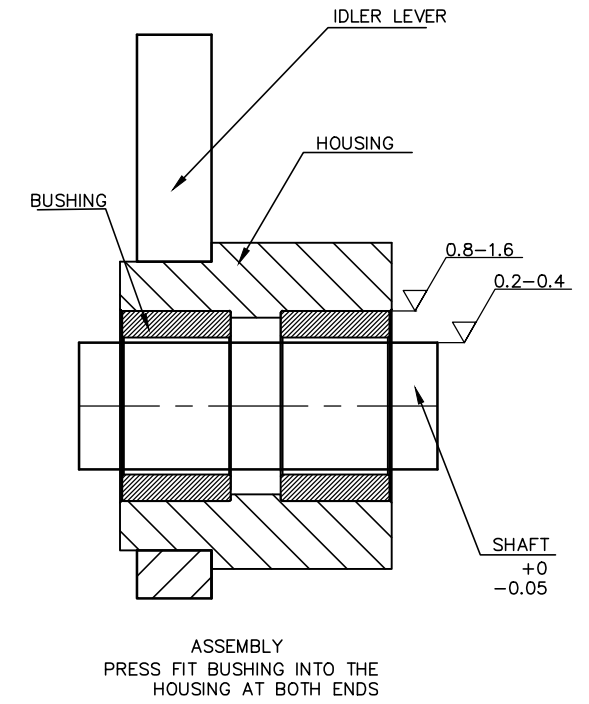
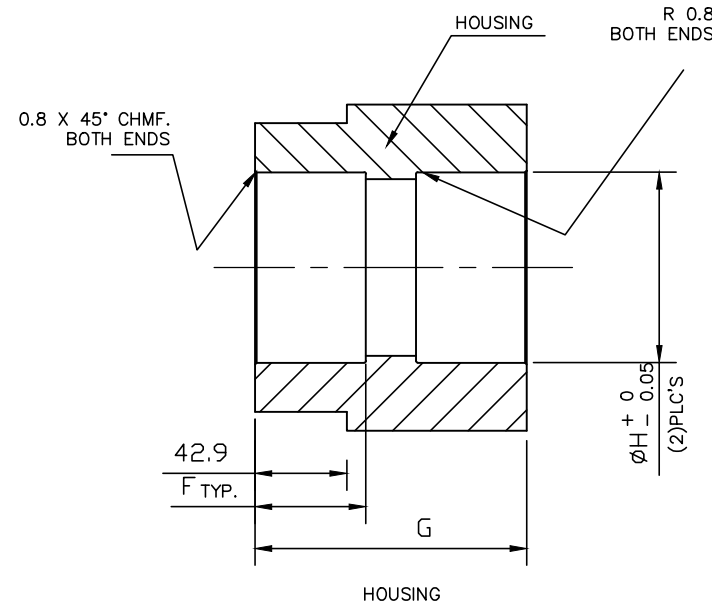
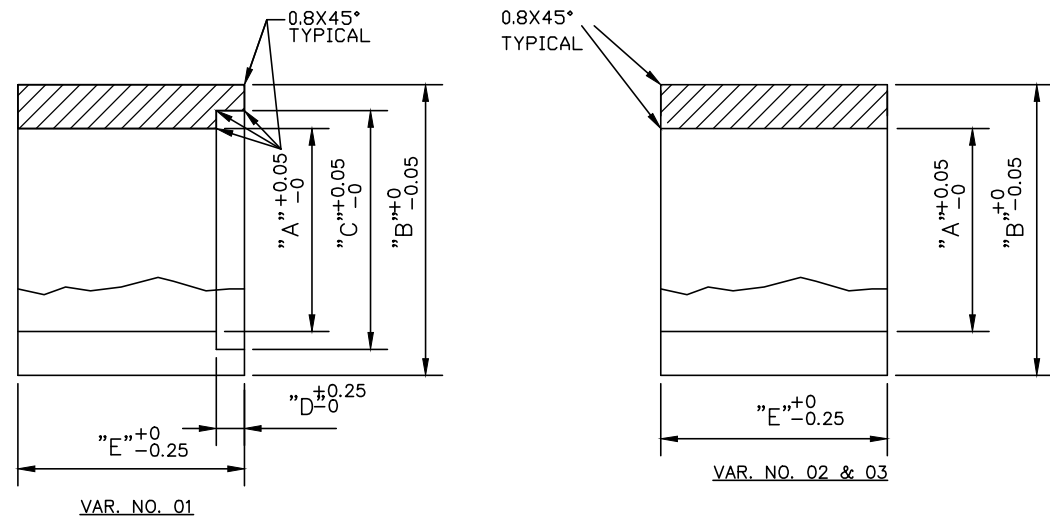


GASKET FOR THE ASSLY.
ITEM NO : 9

VARIANT NUMBER	ITEM NUMBER	DESCRIPTION	STD	DRAWING NUMBER	ITEM NO	MATERIAL CODE	A/C/P	UNIT	UNIT WEIGHT	CS	ZONE
COMMON FOR ALL VARIANTS	07	GASKET				220205250000 AA 21502			0.053		
	06	HEX NUT M8				413040000800 IS: 1363			0.005		
	05	SPRING LOCK WASHER M8				414050000800 IS: 3063			0.002		
	04	HEX HD BOLT M8 X 25LG				412220802500 IS: 1363			0.014		
	03	SPRING SEAL				REF GMS SUB-DELY.			0.005		
	02	BEARING ASSY	4-45-320-01618A			REF GMS SUB-DELY.			0.500		
	03	01	DAMPER BRG HOUSING ASSY	3-45-320-01208	03				2.73		
	02	01	DAMPER BRG HOUSING ASSY	3-45-320-01208	02				1.703		
	01	01	DAMPER BRG HOUSING ASSY	3-45-320-01208	01				2.11		
									1		
									1		

CAUTION: The information on this document is the property of BHARAT HEAVY ELECTRICALS LTD. It must not be used directly or indirectly in any way detrimental to the interest of the company.	TYPE OF PRODUCT OR NAME OF CUSTOMER/PROJECT							
	Bharat Heavy Electricals Ltd UNIT: HIGH PRESSURE BOILER PLANT TIRUCHIRAPALLI - 620014		DRN	B.Chowdhury	SIGNATURE	-sd-	DATE	10.03.11
			CHD	J.V.V.Arana Kumar	SIGNATURE	-sd-	DATE	10.03.11
			APPD	M.Thandapani	SIGNATURE	-sd-	DATE	10.03.11
	DEPT	FS	ALL DIMENSIONS ARE IN MM	PROJECTION	SCALE	WEIGHT (Kg)	REF TO ASSY / OLD DWG	
CODE	29		NTS		7.185			
TITLE							DRAWING NO :	
BEARING ASSEMBLY							2-45-000-01392A 00	
							REV	





VARIANT NUMBER	ITEM NUMBER	DESCRIPTION	STD	DRAWING NUMBER	ITEM NO	MATERIAL CODE	A/C/P	UNIT	UNIT WEIGHT	QTY
					VAR NO	MATERIAL SPECN		DI	QUANTITY	
	03	GRAPHITE ALLOY BUSHING; OD89.3 / ID64							0.003	
	02	GRAPHITE ALLOY BUSHING; OD57.4 / ID38.5							0.002	
	01	GRAPHITE ALLOY BUSHING; W/SEAL; OD57.4/ID38.5							0.002	

VAR. NO.	"A"	"B"	"C"	"D"	"E"	"F"	"G"	"H"
01	38.5	57.4	47.5	7	59	61	145	57
02	38.5	57.4	----	----	50	52	127	57
03	64	89.3	----	----	50	52	127	88.9

NOTES:

- ALL DIMENSIONS ARE IN mm.
- UNSPECIFIED TOLERANCES: DIMS ± 0.8 ; ANGLES $\pm 0^\circ - 15'$

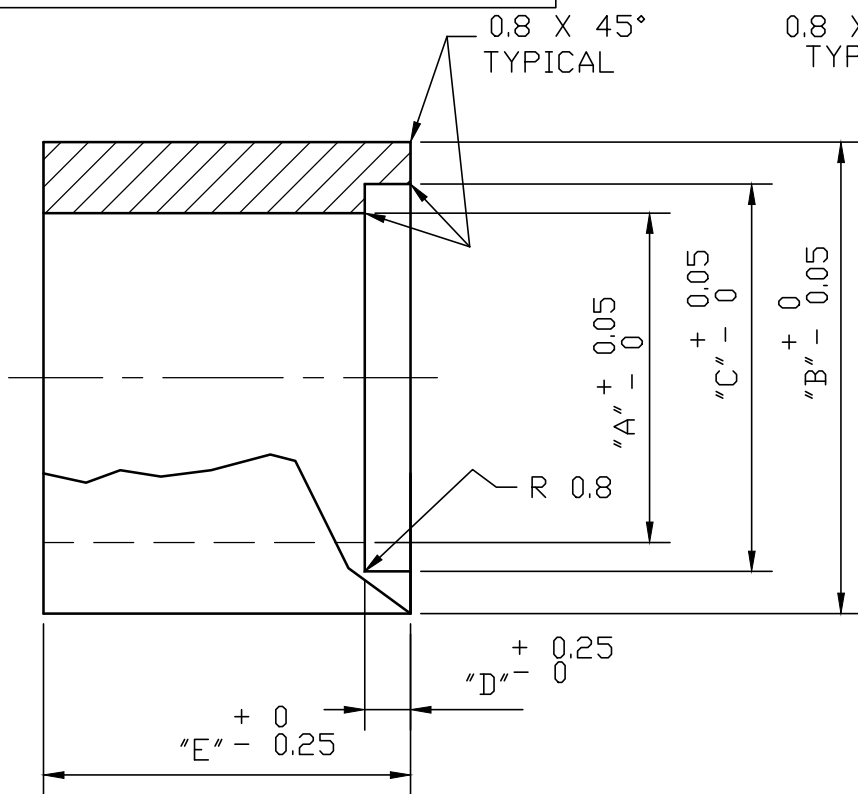
REV 01	DATE 06.11.14	ALTERED : DHEERAJ
		CHD & APPD: GSK
ZONE	HOUSING AND ASSEMBLY VIEWS ADDED DIMENSIONS "F", "G" AND "H" ADDED	

CAUTION: The information on this document is the property of BHARAT HEAVY ELECTRICALS LTD. It must not be used directly or indirectly in any way detrimental to the interest of the company.

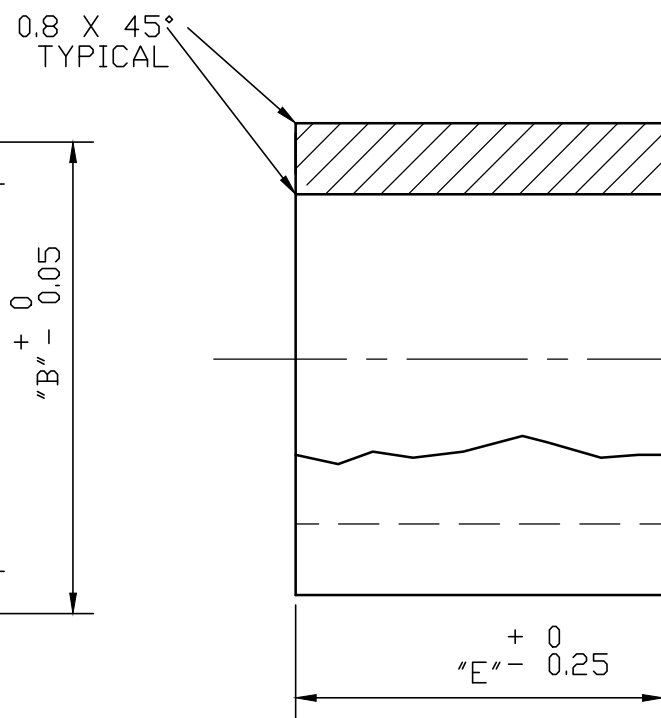
TYPE OF PRODUCT OR NAME OF CUSTOMER/PROJECT				DRN		NAME		SIGNATURE		DATE			
Bharat Heavy Electricals Ltd UNIT: HIGH PRESSURE BOILER PLANT TIRUCHIRAPALLI - 620014 355-055				CHD		G S K		-sd-		31.12.2010			
				APPD		M T P		-sd-		31.12.2010			
				DEPT FS		ALL DIMENSIONS ARE IN MM		PROJECTION		SCALE		WEIGHT (Kg)	
CODE 129				N T S									
TITLE								DRAWING NO :				REV	
IDLER BUSHING								3-45-000-01273A				01	

3-45-000-01283A

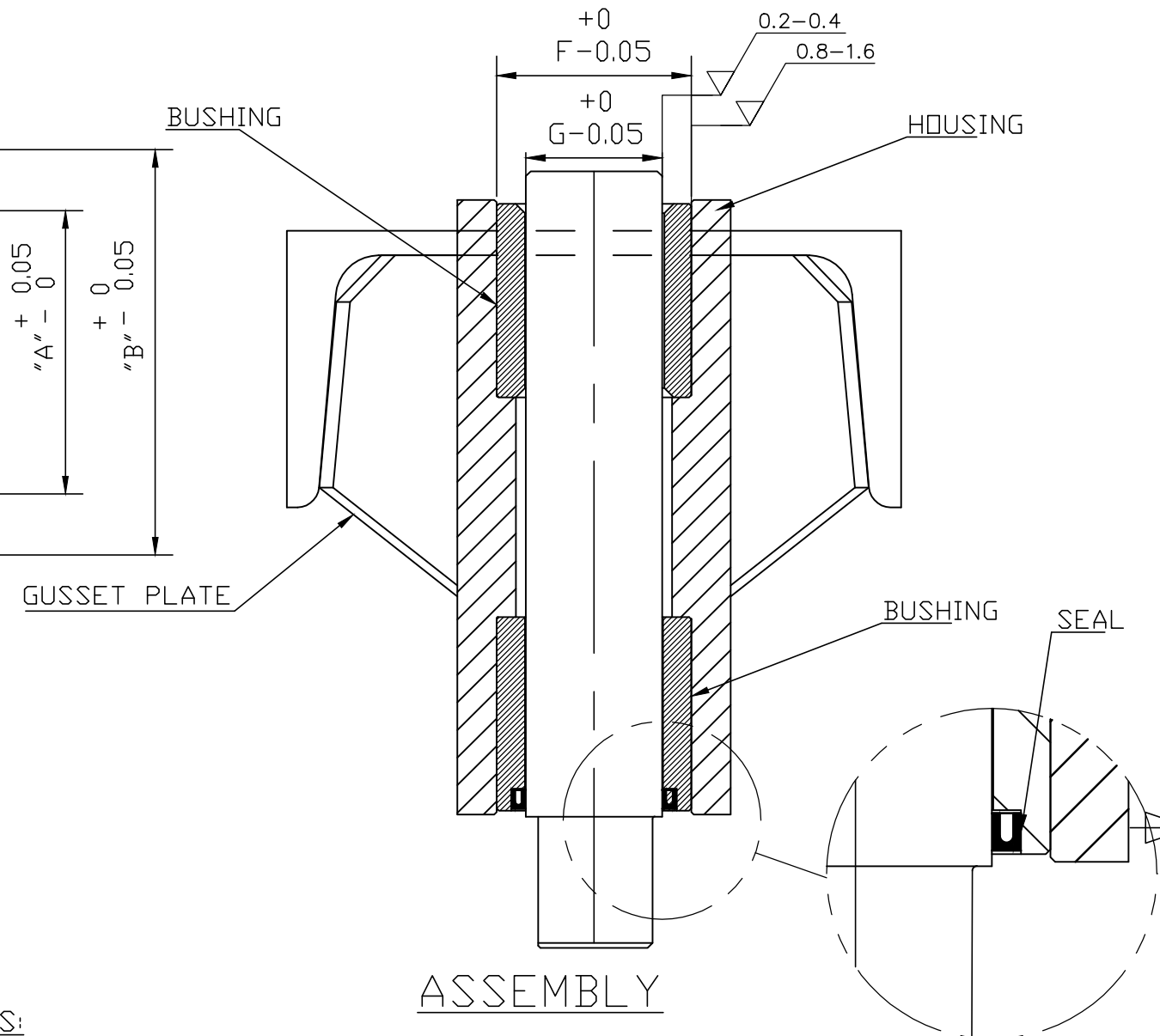
DRAWING NO.



STYLE NO. B



STYLE NO. A



ASSEMBLY

VARIANT NO.	STY. NO.	DIM. "A"	DIM. "B"	DIM. "C"	DIM. "D"	DIM. "E"	DIM. "F"	DIM. "G"
01	A	36.7	52.7	----	----	50.3	52.4	35.76
02	A	51.3	73.4	----	----	50.8	70	50.76
03	B	51.3	73.4	60.2	7.1	57.1	70	50.76
04	A	25.3	35.1	----	----	44.5	34.8	24.36
05	A	38.6	60.7	----	----	50.3	60.4	37.66
06	B	38.6	60.7	47.5	7.1	50.3	60.4	37.66
07	A	38.6	60.7	----	----	69.3	60.4	37.66
08	A	45	63.8	----	----	63.5	63.5	44.42
09	B	45	63.8	53.9	7.1	63.5	63.5	44.42


NOTES:

1. ALL DIMENSIONS ARE IN mm.
2. UNSPECIFIED TOLERANCES: DIMS ±0.8; ANGLES ±0°-15'

MATERIAL SPECIFICATION
GRAPHITE IMPREGNATED WITH METAL ALLOY

REV 01	DATE 06.11.14	ALTERED : DHEERAJ CHD & APPD: GSK
ZONE	ASSEMBLY VIEW ADDED DIMENSIONS "F", AND "G" ADDED	

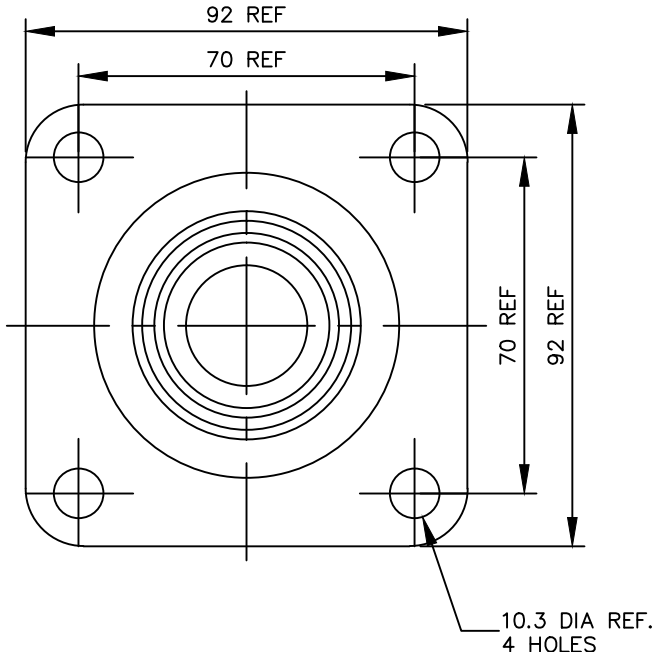
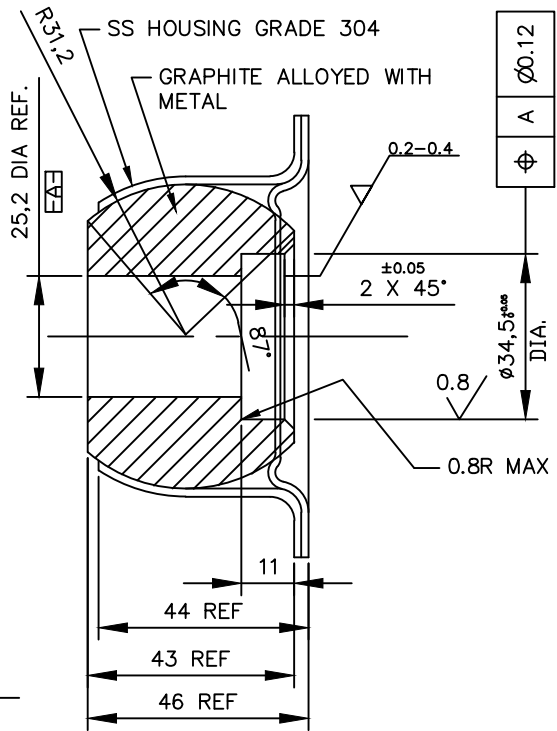
CAUTION: The information on this document is the property of BHARAT HEAVY ELECTRICALS LTD. It must not be used directly or indirectly in any way detrimental to the interest of the company.

TYPE OF PRODUCT OR NAME OF CUSTOMER/PROJECT					
 Bharat Heavy Electricals Ltd UNIT: HIGH PRESSURE BOILER PLANT TIRUCHIRAPALLI - 620014		DRN	NAME G S K	SIGNATURE -sd-	DATE 13/01/2011
DEPT FS	ALL DIMENSIONS ARE IN MM	PROJECTION	SCALE NTS	WEIGHT (Kg) ---	REF TO ASSY / OLD DWG
CODE 129					
TITLE BUSHING (GRAPHITE ALLOY)				DRAWING NO : 3-45-000-01283A	
				REV	01

CAUTION: THE INFO ON THIS DOCUMENT IS THE PROPERTY OF BHEL. IT MUST NOT BE USED DIRECTLY OR INDIRECTLY IN ANY WAY DETRIMENTAL TO THE INTEREST OF BHEL.

REV	DATE	ALTERED :DHEERAJ KUMAR
01	12.11.2014	CHD & APPD:G SARAVANAKUMAR
RADIUS OF BEARING ADDED		

FOR TOLERANCES OF UNTOLERANCED DIMENSIONS DURING MANUFACTURE REFER PLANT STD. NO TP 023 0299



- NOTE:
1. ALL DIMENSIONS ARE MILLIMETERS
 2. UNSPECIFIED TOLS : DIMS ±0.8
 3. REFER ASSLY DRAWING NO 2-45-000-01392
 4. TECHNICAL SPECIFICATION REFER TFS:1001A

VARIANT NUMBER	DESCRIPTION	STD	SUBDELIVERY		0.500
			MATERIAL CODE	A/C/P	UNIT WEIGHT
			MATERIAL SPECN	UNIT	QUANTITY



Bharat Heavy Electricals Ltd
 UNIT: HIGH PRESSURE BOILER PLANT
 TIRUCHIRAPALLI - 620014

DRN	NAME	SIGNATURE	DATE
CHD	BIMAL.C	-sd-	15-03-2011
APPD	GSK	-sd-	15-03-2011
	MTP	-sd-	15-03-2011

DEPT	ALL DIMENSIONS ARE IN MM	PROJECTION	SCALE	WEIGHT (Kg)	REF TO ASSY / OLD DWG
FS			N.T.S		
CODE	129				
TITLE				DRAWING NO :	REV
SELF ALIGNING FLANGE DAMPER BEARING				4-45-320-01618A	01

Terms & Conditions of Reverse Auction

Against this enquiry for the subject item/ system with detailed scope of supply as per enquiry specifications, BHEL may resort to “REVERSE AUCTION PROCEDURE” i.e., ON LINE BIDDING (THROUGH A SERVICE PROVIDER). The philosophy followed for reverse auction shall be English Reverse (No ties).

1. For the proposed reverse auction, technically and commercially acceptable bidders only shall be eligible to participate.
2. Those bidders who have given their acceptance for Reverse Auction (quoted against this tender enquiry) will have to necessarily submit ‘online sealed bid’ in the Reverse Auction. Non-submission of ‘online sealed bid’ by the bidder for any of the eligible items for which techno-commercially qualified, will be considered as tampering of the tender process and will invite action by BHEL as per extant guidelines in vogue.
3. BHEL will engage the services of a service provider who will provide all necessary training and assistance before commencement of on line bidding on internet.
4. In case of reverse auction, BHEL will inform the bidders the details of Service Provider to enable them to contact & get trained.
5. Business rules like event date, time, bid decrement, extension etc. also will be communicated through service provider for compliance.
6. Bidders have to fax the Compliance form (annexure IV) before start of Reverse auction. Without this, the bidder will not be eligible to participate in the event.
7. In line with the NIT terms, BHEL will provide the calculation sheet (e.g., EXCEL sheet) which will help to arrive at “Total Cost to BHEL” like Packing & forwarding charges, Taxes and Duties, Freight charges, Insurance, Service Tax for Services and loading factors (for non-compliance to BHEL standard Commercial terms & conditions) for each of the bidder to enable them to fill-in the price and keep it ready for keying in during the Auction.
8. Reverse auction will be conducted on scheduled date & time.
9. At the end of Reverse Auction event, the lowest bidder value will be known on auction portal.

10. The lowest bidder has to fax/e-mail the duly signed and filled-in prescribed format for price breakup including that of line items, if required, (Annexure VII) as provided on case-to-case basis to Service provider within two working days of Auction without fail.
11. In case BHEL decides not to go for Reverse Auction procedure for this tender enquiry, the Price bids and price impacts, if any, already submitted and available with BHEL shall be opened as per BHEL's standard practice.
12. Bidders shall be required to read the "Terms and Conditions" section of the auctions site of Service provider, using the Login IDs and passwords given to them by the service provider before reverse auction event. Bidders should acquaint themselves of the 'Business Rules of Reverse Auction', which will be communicated before the Reverse Auction.
13. If the Bidder or any of his representatives are found to be involved in Price manipulation/ cartel formation of any kind, directly or indirectly by communicating with other bidders, action *as per extant BHEL guidelines*, shall be initiated by BHEL and the results of the RA scrapped/ aborted.
14. The Bidder shall not divulge either his Bids or any other exclusive details of BHEL to any other party.
15. In case BHEL decides to go for reverse auction, the H1 bidder (whose quote is highest in online sealed bid) may not be allowed to participate in further RA process.

Annexure II - Loading for deviation in Commercial terms

Payment Term (Indigenous)	
If materials are receivable at Project Sites without PBG	<p><u>Option-1:</u> Payment term is 100% direct payment after 45 days from the date of dispatch against site acknowledgement</p> <p><u>Option-2: (REVISED)</u></p> <p>a) Payment term is 100% direct payment after 45 days from the date of dispatch against site acknowledgement.</p> <p style="text-align: center;">(or)</p> <p>b) Payment term is 90% direct payment after 45 days from the date of dispatch against submission of dispatch documents and balance 10% against site acknowledgement. For this option –(b), a loading of 2% on the 90% of the offered value shall be made.</p>

Payment Term (Imports) -
BHEL Payment term is 100% payment on CAD basis after 45 days from the date of receipt of documents, specified in PO, at BHEL bank. Respective bank charges to respective account.
Any deviation in the above payment term will attract loading as mentioned below. “Base rate of SBI (as applicable on the date of bid opening. Techno-commercial bid opening in case of two part bids) + 6% shall be considered for loading for the period of relaxation sought by bidders.
<ul style="list-style-type: none">• In the case of Usance LCs the loading will be considered @ 1.5% on the offered Value.• For LC at sight the loading will be considered @ 3.5% on the offered Value.• Normally CAD at sight and Confirmed LCs are liable for rejection.

Liquidated Damages / Penalty
Liquidated damages shall be 0.5% of the undelivered portion per week of the delay or part thereof subject to a maximum of 10% of the total order value.
Any deviation from the above LD clause, loading will be applied to the extent to which it is not agreed by the bidder (at offered value).

Vendor Sign & Seal



Annexure III - GENERAL TERMS

I. Enquiry / Request for Quotation (RFQ):

- (a) Any Purchase Order resulting from this enquiry shall be governed by **these general terms and conditions listed below and special terms and conditions, if any, along with this enquiry** of Bharat Heavy Electricals Limited, BHEL HPBP, Trichy-620014 (**hereinafter referred to as BHEL Trichy**).
- (b) Any of the terms and conditions not acceptable to supplier, shall be explicitly mentioned in the quotation. Otherwise, it will be treated as that all terms and conditions of this enquiry are acceptable.
- (c) If counter terms and conditions are offered by supplier, BHEL Trichy shall not be governed by such terms and conditions, unless it is agreed and incorporated in the Purchase Order of BHEL Trichy.
- (d) Any deviation to the terms and conditions not mentioned in the quotation by supplier in response to this enquiry will not be considered, if put forth subsequently or after issue of order, unless clarification is sought for by BHEL TRICHY and agreed upon in the Purchase Order of BHEL TRICHY.
- (e) BHEL TRICHY reserves the right to adopt Reverse Auction for the enquiry sent, at its discretion.
- (f) BHEL TRICHY shall be at liberty to cancel the tender at any time, before ordering, without assigning any reason.
- (g) The correspondence exchanged against the tender from both tenderer and BHEL through email are considered as valid document legally though it is not signed. It is treated as valid confirmations made on behalf of the respective company and very much comes under the legal ambit of the business transaction and hence it is binding on both the parties to the business.
- (h) Bidders participating in the tender should declare in their technical bid that whether they have been black-listed / kept on hold for a specified period / given Business holiday for a specified period by any Public sector undertaking or Government departments. The reasons for such action with details and the current status of such hold shall be clearly furnished to BHEL. If no such details are mentioned in the offer then it will be construed that the subject bidder is not under any such hold. But at a later date if it comes to the notice of BHEL about any such hold under enforcement on the subject bidder, BHEL will have every right to reject the offer of such vendors at any point of time and also under any stage of the finalization of the subject tender irrespective of the status of the subject bidder in that tender. Such bidders will not be permitted to participate in the further tender proceedings and will be communicated suitably. They will not be also considered for any ongoing tenders even if participated till the hold is officially lifted and confirmed in writing.
- (i) Risk purchase: - If the supplier fails to deliver the goods within the delivery specified in the Purchase Order, BHEL will be entitled to terminate the contract and to purchase elsewhere at the risk and cost of the seller either the whole of the goods or any part which the supplier has failed to deliver or dispatch within the delivery period mentioned in the Purchase Order.



Bharat Heavy Electricals Limited

(A Govt. of India Undertaking)

AN ISO 9001

High Pressure Boiler Plant, Tiruchirappalli 620 014, India

Phone: (0431) 2577426

Fax: (0431) 2520719

COMPANY

E mail sachinsaini@bheltry.co.in

- (j) All disputes or differences arises shall be subject to the exclusive jurisdiction of court within the limit of Trichy, TN.
- (k) Cartel Formation: - All the firms should desist from forming cartel as the practice is prohibited under Section 3(3) (a) & (d) of the competition Act 2002. If any such instance is observed during this tender will attract disciplinary action as per BHEL policies.

II. General Terms and conditions:

1. **TWO PARTS BID:** Quotation shall be submitted in two parts bid i.e.

(a) Techno-commercial i.e., Un-priced Bid:

Techno-commercial bid shall be submitted with complete description of the material, specification compliances to the enquired specification and all the commercial terms & conditions indicated in the **COMMERCIAL TERMS** attached to this tender. Any other enclosure, which the supplier wishes to submit like product catalogue, technical literature etc., may also be submitted in a sealed envelope super scribed clearly as "**TECHNOCOMMERCIAL BID**" with **RFQ No. and DUE DATE**. Un-priced copy of price bid (without price) shall also be enclosed with the techno-commercial bid.

Confirmation to BHEL specifications shall be indicated by the vendor in the respective columns provided in the purchase specification wherever applicable. Deviations to the specification / item description, if any shall be brought out clearly indicating "DEVIATION TO BHEL SPECIFICATION" without fail as a part of technical offer.

Suppliers who are not registered with BHEL Trichy must fill up online supplier registration form (SRF) and submit the copy of the filled SRF along with all the supporting documents. The SRF must be enclosed with techno-commercial bid. Offers without SRF may not be evaluated by us. Refer Annexure VI

Compliance to Pre-qualification criteria (if applicable) shall also be enclosed with the Techno commercial bid.

Manufacturer's name, their trade mark and brand, part number, alternate material to the one asked in enquiry, if any, should be mentioned in quotation and illustrative leaflets giving technical particulars etc. are to be attached to facilitate consideration and technical evaluation of the quotation.

BHEL TRICHY material code number (as in enquiry) shall be indicated for each item quoted.

(b) Price Bid:

Price bid should contain basic unit prices, discount if any, applicable taxes & duties, packing & forwarding charges (if applicable), Freight & insurances (if applicable) FOB charge (if applicable) etc., in a sealed envelope super scribed clearly as "**PRICE BID**" with **RFQ No. and DUE DATE**.



Bharat Heavy Electricals Limited

(A Govt. of India Undertaking)

AN ISO 9001

High Pressure Boiler Plant, Tiruchirappalli 620 014, India

Phone: (0431) 2577426

Fax: (0431) 2520719

COMPANY

E mail sachinsaini@bheltry.co.in

It is preferred to indicate the rates in both figures and words. In such case, if there is difference / discrepancy between the rates in figures and words, the **least of the two** rates will be considered.

2. Tender (quotation) shall be submitted in a sealed envelope super scribed with **RFQ NUMBER** and **DUE DATE** on it and the same must reach our office on or before the due date by **14:00 hrs.** Quotations are to be dropped in the tender box available at MM/BOI's office at Fourth Floor, 24 Building, BHEL Trichy. Quotations also can be dispatched by Couriers / Registered post / FAX / e mail to the Purchase Executive indicated in the RFQ.

Quotation through fax / email when addressed to the specific fax number and email address given in the enquiry, to be sent well in advance to enable BHEL TRICHY purchase personnel to drop in the tender box before the scheduled opening date and time. **Supplier is fully responsible for lack of secrecy on information of such quotations.**

BHEL TRICHY is not responsible for any delay in receipt of quotation sent by supplier through post / fax / email.

Late Tenders i.e., Tenders received after due date will be rejected.

3. The rates quoted against each item shall be in the same units stated in the enquiry. If the quotations are submitted in any other unit than specified, relationship between two sets of units must be furnished in the offer.
4. As far as possible, the quotations shall be free from corrections / overwriting. Corrections if any should be initialled with your seal and signature. Any typographical errors, totalling mistakes, currency mistakes, multiplication mistakes, summary mistakes observed in your priced bids, BHEL may consider whichever is beneficial to BHEL for evaluation.
5. Quotations are to be duly signed. Unsigned bids / offers are liable for rejection.
6. Tenders will be opened at **14:30 hrs.** & the venue is MM/BOI's conference hall at Fourth Floor, 24 Building, BHEL Trichy. All the bidders or their authorized representatives (with authorization letter from their principals) can witness opening of tenders on the due date.
7. All the bids will be scrutinized for technical & commercial conformity.
8. The quantities in each item to be purchased may vary from quantities enquired according to the actual requirement at the time of placing the purchase order. Quantity discount if any should be mentioned in your offer.
9. **BIDDERS** (for indigenous purchase) shall indicate clearly Excise duty, Education cess, Sales Tax/VAT, Octroi, Exit/Entry tax, Service Tax as applicable for the quoted items. In the absence of clarity of these, any claim at a later date will not be entertained. Any changes in Taxes and duties after award of the contract will not be considered except such are those, which are imposed by Govt., notification within the contractual delivery. Seeking price amendments for



change in Excise duty due to crossing of turnover limits will not be considered under any circumstances.

10. Payment of Agency Commission to Indian Agent (for foreign purchase):

i. BHEL shall deal directly with foreign vendors, wherever required, for procurement of goods. However, if the foreign principal desires to avail of the services of an Indian agent, then the foreign principal should ensure compliance to regulatory guidelines - which require mandatory submission of an Agency Agreement.

ii. It shall be incumbent on the Indian agent and the foreign principal to adhere to the relevant Guidelines of Government of India, issued from time to time.

iii. The Agency Agreement should specify the precise relationship between the foreign OEM / foreign principal and their Indian agent and their mutual interest in the business. All services to be rendered by agent/ associate, whether of general nature or in relation to the particular contract, must be clearly stated by the foreign supplier/ Indian agent. Any payment, which the agent or associate receives in India or abroad from the OEM, whether as commission or as a general retainer fee should be brought on record in the Agreement and be made explicit in order to ensure compliance to laws of the country.

iv. Any agency commission to be paid by BHEL to the Indian agent shall be in Indian currency only.

v. Tax deduction at source is applicable to the agency commission paid to the Indian agent as per the prevailing rules.

vi. In the absence of any agency agreement, BHEL shall not deal with any Indian agent (authorized representatives / associate / consultant, or by whatever name called) and shall deal directly with the foreign principal only for all correspondence and business purposes.

vii. The supply and execution of the Purchase Order (including indigenous supplies/ service) shall be in the scope of the OEM/ foreign principal. The OEM/ foreign principal should submit their offer inclusive of all indigenous supplies/ services and evaluation will be based on 'total cost to BHEL'. In case OEM/ foreign principal recommends placement of order(s) towards indigenous portion of supplies/ services on Indian supplier(s)/ agent on their behalf, the credentials/ capacity/ capability of the Indian supplier(s)/ agent to make the supplies/ services shall be checked by BHEL as per the extant guidelines of Supplier Evaluation, Approval & Review Procedure (SEARP), before opening of price bids. It will be the responsibility of the OEM/ foreign principal to get acquainted with the evaluation requirements of Indian supplier/ agent as per SEARP available on www.bhel.com OR <http://vis.bheltry.co.in/olsa/>.

The responsibility for successful execution of the contract (including indigenous supplies/ services) lies with the OEM/ foreign principal. All bank guarantees to this effect shall be in the scope of the OEM/ foreign principal.



Bharat Heavy Electricals Limited

(A Govt. of India Undertaking)

AN ISO 9001

High Pressure Boiler Plant, Tiruchirappalli 620 014, India

Phone: (0431) 2577426

Fax: (0431) 2520719

COMPANY

E mail sachinsaini@bheltry.co.in

11. TOTAL COST TO BHEL: Purchase order will be placed on the lowest bidder (L1) only among the technically & commercially accepted offers. Lowest Bid (L1) is determined on the basis of the total cost to BHEL.

(a) FOR FOREIGN PURCHASE:

Total cost to BHEL = Total basic value in foreign currency + FOB charges (if any) + Packing & Forwarding charges (if any) + Cost Insurance Freight (CIF) + Basic Custom Duty (BCD) + Counter Veiling Duty (CVD) + Educational Cess + Special Additional Duty (SAD) + Entry TAX + Service TAX (if applicable) + Loading factors for deviations to commercial terms & conditions.

Note: Exchange rate ruling on the date of Tender opening (Techno-commercial / un-priced Bid) will be considered for converting foreign currency to Indian currency. Exchange rates published in Economic Times (TT selling) will be considered.

(b) FOR INDIGENOUS PURCHASE:

Total cost to BHEL = Total basic value + Packing & forwarding charges + Excise duty Education cess + sales Tax/VAT + Octroi + Exit/Entry tax + Freight & Insurance + Service Tax (if applicable) + Loading factors for deviations to commercial terms & conditions.

12. FIRM PRICE: Rates quoted should be firm and no enhancement in the rates and changes in the techno-commercial terms will be allowed once the quotation is accepted and order is placed.

13. TERMS OF PAYMENT:

(a) FOR FOREIGN PURCHASE:

BHEL Payment term is 100% payment on CAD basis after 45 days from the date of receipt of documents, specified in PO, at BHEL bank. Respective bank charges to respective account. Any deviation in the above payment term will attract loading as mentioned below.

“Base rate of SBI (as applicable on the date of bid opening. Techno-commercial bid opening in case of two part bids) + 6% shall be considered for loading for the period of relaxation sought by bidders.

- In the case of Usance LCs the loading will be considered @ 1.5% on the offered Value.
- For LC at sight the loading will be considered @ 3.5% on the offered Value.
- Normally CAD at sight and Confirmed LCs are liable for rejection.

(b) FOR INDIGENOUS PURCHASE:

100% within 45 days from the date of receipt of materials at site/stores as the case may be.

14. ADVANCE PAYMENT: Quotations with payment terms of “Advance” or “Inland Letter of Credit” will not be considered and such offers are liable for rejection commercially.



15. PENALTY:

- a Liquidated damages shall be 0.5% of the total order value per week or part thereof subject to a maximum of 10% of the total order value.
- b ~~For staggered delivery schedule, LD shall be 0.5% of the undelivered portion per week of the delay or part thereof subject to a maximum of 10% of the total order value.~~
- c Any deviation from the above LD clause, loading will be applied to the extent to which it is not agreed by the bidder (at offered value).

16. PBG: Not applicable.

17. WARRANTY/GUARANTEE: Guarantees shall be given for Eighteen months from the date of receipt of the material at Trichy Stores.

18. TERMS OF DELIVERY:

(a) FOR IMPORTED PURCHASE:

Price offered shall be for goods packed and delivered **C.I.F.** (CHENNAI AIRPORT) including packing, forwarding, Handling, Ancillary charges like negotiation of bank documents, Export declaration, Certificate of origin etc.

Packing shall be ~~Road / Rail / Air / Sea worthy~~, best suitable for transshipment and to take care of transit damages.

Vendors shall indicate the name of International Airport.

(b) FOR INDIGENOUS PURCHASE:

Material shall be delivered on FOR TRICHY/Stores basis, inclusive of packing & forwarding charges.

Packing shall be Road / Rail / Air / Sea worthy, best suitable for transshipment and to take care of transit damages.

Transit insurance shall be arranged by BHEL. Vendor shall intimate the dispatch details to BHEL immediately after effecting shipment, to arrange transit insurance accordingly.



Bharat Heavy Electricals Limited

(A Govt. of India Undertaking)

AN ISO 9001

High Pressure Boiler Plant, Tiruchirappalli 620 014, India

Phone: (0431) 2577426

Fax: (0431) 2520719

COMPANY

E mail sachinsaini@bheltry.co.in

19. **DELIVERY REQUIREMENT:** Material shall be delivered, as per the delivery schedule indicated in the RFQ. Indicate earliest firm delivery period in **NUMBER OF WEEKS or DAYS** by which materials will be dispatched from the date of receipt of purchase order.
20. **VALIDITY:** Quotation should remain valid for a period of **90 days** from the date of technical bid opening.
21. BHEL reserves the right to RE-FLOAT/REJECT/CANCEL the TENDER ENQUIRY (RFQ) without assigning any reason or cause thereof. Quotes received against this TENDER ENQUIRY are subject to and governed by all these terms and conditions. BHEL's decision will be final in awarding of the contract and binding on all vendors.
22. **REVERSE AUCTION:** Applicable if any (Refer Annexure I).
23. **POST-ORDER REQUISITES:**
- a) Pre-shipment inspection at vendor's works, if required, will be carried out by BHEL/ BHEL TPI agency. Required assistance will have to be provided by the vendor at the time of pre-shipment inspection.
 - b) Test certificates, Calibration certificates and warranty certificates as stipulated at the time of ordering shall be furnished.
 - c) Items shall be dispatched by Air/Road/Rail/Sea worthy packing. Any damage and later rejection, due to poor / improper packing shall be to supplier's account.
 - d) Any damage/rejection should be made good or replaced immediately without any extra cost to BHEL.
 - e) Original invoice (4 sets) to be submitted at BHEL Trichy for arranging payment.
24. Any dispute arising out of this contract shall be referred to the sole arbitration of Head of Materials Management, BHEL, TRICHY, Trichy or any other officer nominated by him and his decision shall be final and binding on the parties. The venue of the arbitration in all cases shall be Trichy.
25. All suits in respect of the above lie in the court of Jurisdiction of Trichy (India) only.
26. Material shall comply with the standard requirements of ISO 9001, 14001 & OHSAS 18001.
27. **REGRET LETTER:** In case, the supplier is unable / not willing to quote (for BHEL's registered vendors), a letter of regret shall be sent.
28. **LOADING FACTORS:**

Loading factors as detailed below will be added to the quoted price (basic) to evaluate the lowest quote for non-compliance of BHEL standard commercial terms.



Bharat Heavy Electricals Limited

(A Govt. of India Undertaking)

AN ISO 9001

High Pressure Boiler Plant, Tiruchirappalli 620 014, India

Phone: (0431) 2577426

Fax: (0431) 2520719

COMPANY

E mail sachinsaini@bheltry.co.in

A(i). For non compliance of standard Terms of payment (For Foreign Purchase Orders)

Sl. No.	BHEL standard term	If you quote	Loading factor in % for non-compliance
1	BHEL Payment term is 100% payment on CAD basis after 45 days from the date of receipt of documents, specified in PO, at BHEL bank. Respective bank charges to respective account.	(a) 100% Through Letter of Credit (LC) (b) CAD with reduced time period	(a) For LC at sight the loading will be considered @ 3.5% on the offered Value. (b) Base rate of SBI (as applicable on the date of bid opening. Techno-commercial bid opening in case of two part bids) + 6% shall be considered for loading for the period of relaxation sought by bidders.

A(ii). For non-compliance of standard Terms of payment (For Indigenous Purchase Orders)

Sl. No.	BHEL standard term	If you quote	Loading factor in % for non-compliance
1	100% within 45 days from the date of receipt (credit payment)	(a) Payment through bank	Not acceptable
		(b) Payment against proforma invoice	Not acceptable
		(c) 100% within 45 days after receipt of material.	Nil
		(d) LC payment terms	Offers will be rejected

B. For non-compliance of Penalty clause:

Sl. No.	BHEL standard term	If you quote	Loading factor for noncompliance
1	Penalty of 0.5% per week subject to max. of 10% on the basic value of the items not supplied /delayed	Not agreed.	10 %
		5% max., agreed.	5%
		Other than the above.	10% - (minus) agreed max. %



Bharat Heavy Electricals Limited

(A Govt. of India Undertaking)

AN ISO 9001

High Pressure Boiler Plant, Tiruchirappalli 620 014, India

Phone: (0431) 2577426

Fax: (0431) 2520719

COMPANY

E mail sachinsaini@bheltry.co.in

C. For Non-conformance to delivery requirement indicated in the RFQ:

SI. No.	BHEL standard term	If you quote	Loading factor for noncompliance
1	Delivery requirement as indicated in the RFQ in number of weeks/days from the date of issue of PO.	Not agreed for the stipulated delivery in the enquiry	0.5 % per week up to max. of 10% for the difference in period

D (i) For Non- agreement on delivery at BHEL-SITE/TRICHY (For Foreign Purchase Orders):

SI. No.	BHEL standard term	If you quote	Loading factor for noncompliance
1	CIF (Chennai Airport)	Not agreed for the standard term of delivery	BHEL's cost for arranging material transportation.

D (ii) For Non- agreement on delivery at BHEL-TRICHY/SITE (For Indigenous Purchase Orders):

SI. No.	BHEL standard term	If you quote	Loading factor for noncompliance
1	FOR Trichy Stores	Not agreed for the standard term of delivery	BHEL's cost for arranging transportation.

Annexure IV - Terms and conditions

Special terms & conditions For <u>IMPORT vendors</u> To Enquiry no: 1801401719 dt 02.12.2014 for Supply of Graphite Alloy Bushings/Bearings.		
Sl.no	Conditions	Vendor conformation
1	Offer shall be submitted in TWO PART bid i.e Technical offer with commercial terms & conditions in one envelope & price bid in another envelope, duly sealed.	
2	Price may be finalized thro " <u>On line Reverse Auction Process</u> " using internet. Please confirm your acceptance.	
3	Offer should be valid for a minimum period of 90 days, from the date of Price Bid Opening/ Reverse Auction.	
4	Tender will be finalized on the basis of "total cost to BHEL".	
5	"Rate per number" to be quoted on "CIF Chennai Airport" indicating price break up for FOB (mention airport), Marine Insurance, Air Freight etc separately.	
6	If the vendor is not conforming to our technical / drawing requirements in total, their offer will not be considered for further evaluation in this tender.	
7	Delay in dispatches shall attract a penalty of Liquidated damages (LD) @ 0.5% per week, subject to maximum of 10%.	
8	Lowest Prices received against BHEL tender need not be the technically acceptable one and in that case BHEL reserve the right not to consider the same	
9	Guarantees shall be given for Eighteen months from the date of receipt of the material at Trichy Stores.	
10	BHEL reserves the right to increase or decrease the tendered quantity.	

(Vendor Sign & Seal)

Annexure IV - Terms and conditions

Special terms & conditions to Electro Forged floor grills for <u>INDIGENOUS vendors</u> To Enquiry no: 1801401719 dt 02.12.2014 for Supply of Graphite Alloy Bushings/Bearings.		
Sl.no	Conditions	Vendor conformation
1	Offer shall be submitted in TWO PART bid i.e Technical offer with commercial terms & conditions in one envelope & price bid in another envelope, duly sealed.	
2	Price may be finalized thro " <u>On line Reverse Auction Process</u> " using internet. Please confirm your acceptance.	
3	Offer should be valid for a minimum period of 90 days, from the date of Price Bid Opening/Reverse Auction.	
4	Tender will be finalized on the basis of "Total cost basis to BHEL".	
5	"Rate per number" to be quoted on "FOR Trichy Stores" basis with price breakup indicating basic price, P&F, ED,CST/VAT, freight charges separately. Insurance will be in BHEL scope.	
6	If the vendor is not conforming to our technical / drawing requirements in total, their offer will not be considered for further evaluation in this tender.	
7	Delay in dispatches shall attract a penalty of Liquidated damages (LD) @ 0.5% per week, subject to maximum of 10%	
8	Lowest Prices received against BHEL tender need not be the technically acceptable one and in that case BHEL reserve the right not to consider the same	
9	Guarantees shall be given for Eighteen months from the date of receipt of the material at Trichy Stores.	
10	BHEL reserves the right to increase or decrease the tendered quantity.	

(Vendor Sign & Seal)

Annexure IV - Terms and conditions

Commercial Terms& conditions for INDIGENOUS vendors To Enquiry no: 1801401719 dt 02.12.2014 for Supply of Graphite Alloy Bushings/Bearings.			
SL NO	CONDITIONS	BHEL TERMS	Accepted/Not Accepted
1	Delivery Terms	FOR Trichy Stores	
2	Delivery period	90 days from PO	
3	ED	Vendor to quote	
4	CST/VAT	Vendor to quote	
5	Freight	Vendor Scope	
6	Insurance	BHEL Scope	
7	LD	Delay in dispatches shall attract a penalty of Liquidated damages (LD) @ 0.5% per week, subject to maximum of 10%	
8	Risk Purchase	Applicable	
9	PBG	Not Applicable	
10	Payment terms	100% payment will be made in 45 days from the date of receipt of material at site.	
11	Validity	90 days from the date of RA/Price bid opening	
12	Firm Price	Firm Price	
13	PVC	Not Applicable	
14	Packing Forwarding	Vendor Scope	
15	Guarantee/Warranty	Guarantees shall be given for Eighteen months from the date of receipt of the material at Trichy Stores.	

(Vendor Sign & Seal)

Annexure IV - Terms and conditions

Commercial Terms& conditions for IMPORT vendors to Enquiry no: 1801401719 dt 02.12.2014 for Supply of Graphite Alloy Bushings/Bearings.

SL NO	CONDITIONS	BHEL TERMS	Accepted/Not Accepted
1	Delivery Terms	CIF Chennai Airport	
2	Delivery period	90 days from PO	
3	Freight from Chennai to Trichy Stores	BHEL Scope	
4	Insurance	by BHEL (for Chennai to Site movement)	
5	LD	Delay in dispatches shall attract a penalty of Liquidated damages (LD) @ 0.5% per week, subject to maximum of 10%	
6	Risk Purchase	Applicable	
7	PBG	Not Applicable	
8	Payment terms	BHEL Payment term is 100% payment on CAD basis after 45 days from the date of receipt of documents, specified in PO, at BHEL bank. Respective bank charges to respective account.	
9	Validity	90 days from date of RA/Price bid opening	
10	Firm Price	Firm Price	
11	PVC	Not Applicable	
12	Packing Forwarding	Vendor Scope	
13	Guarantee/Warranty	Guarantees shall be given for Eighteen months from the date of receipt of the material at Trichy Stores.	

(Vendor Sign & Seal)

Annexure V

Clause: Special Provisions for Micro and Small Enterprises (MSE):

1. 20% of the tendered quantity is earmarked for MSE suppliers in this tender.
2. Out of the 20% tendered quantity reserved for MSE suppliers, 4% shall be earmarked for procurement from MSE owned by SC / ST entrepreneurs.
3. In case MSE vendor participating in the tender quotes within the price band of L1 + 15%, they will be allowed to supply the portion of the requirement subject to acceptance of L1 price by MSE vendor. In case of more than one such MSE, the supply shall be shared proportionately.
4. MSE suppliers can avail the intended benefits only if they submit along with offer, attested copies of either EM II certificate having deemed validity (Two years from the date of issue of acknowledgement in EM II) or valid NSIC certificate or EM II certificate along with CA certificate (Format enclosed) applicable for the year, certifying quantum of investment in plant and machinery within the permissible limit as per the act for relevant status (Micro or small) where the deemed validity of EM II is over. Date to be reckoned for determining the deemed validity will be the last date of technical bid submission. Non submission of such documents will lead to consideration of their bids at par with other bidders and MSE status of such suppliers shall be shifted to Non MSE supplier till the supplier submits these documents.

NOTE: **Without requisite documents as mentioned in point 4 above, MSE status benefits will not be extended to vendors and these documents must be furnished along with the technical bid without fail.**

Annexure VI – SRF

Supplier Registration Form (SRF) has to be duly filled up online and send one copy with all the documents as mentioned in SRF. Offers with incomplete forms will not be entertained

URL for online Registration form is as below

<http://vis.bheltry.co.in/olsa/>

For any help regarding filling of SRF, you may contact following

Mr Sukumar (Head - Supplier Development Cell)

Ph: 0431/2577383

Email: sukumar@bheltry.co.in

Mr. Ebinesan (Sr. Manager - Supplier Development Cell)

Ph: 0431/2577448

Email ID: ebi@bheltry.co.in

Systems / BHEL /TRICHY

Ph: System SDC:0431/2577121, ljp@bheltry.co.in

Ph: System ERP:0431/2577522, erpsubcon@bheltry.co.in

For any queries regarding tender you may contact

Mr. Sachin Saini

Engineer/MM/BOI

BHEL Trichy

0431-2577897

sachinsaini@bheltry.co.in