

Room Heater, Heat Convector (Air Blower) and Industrial Heater

Pre-Qualifying Criteria

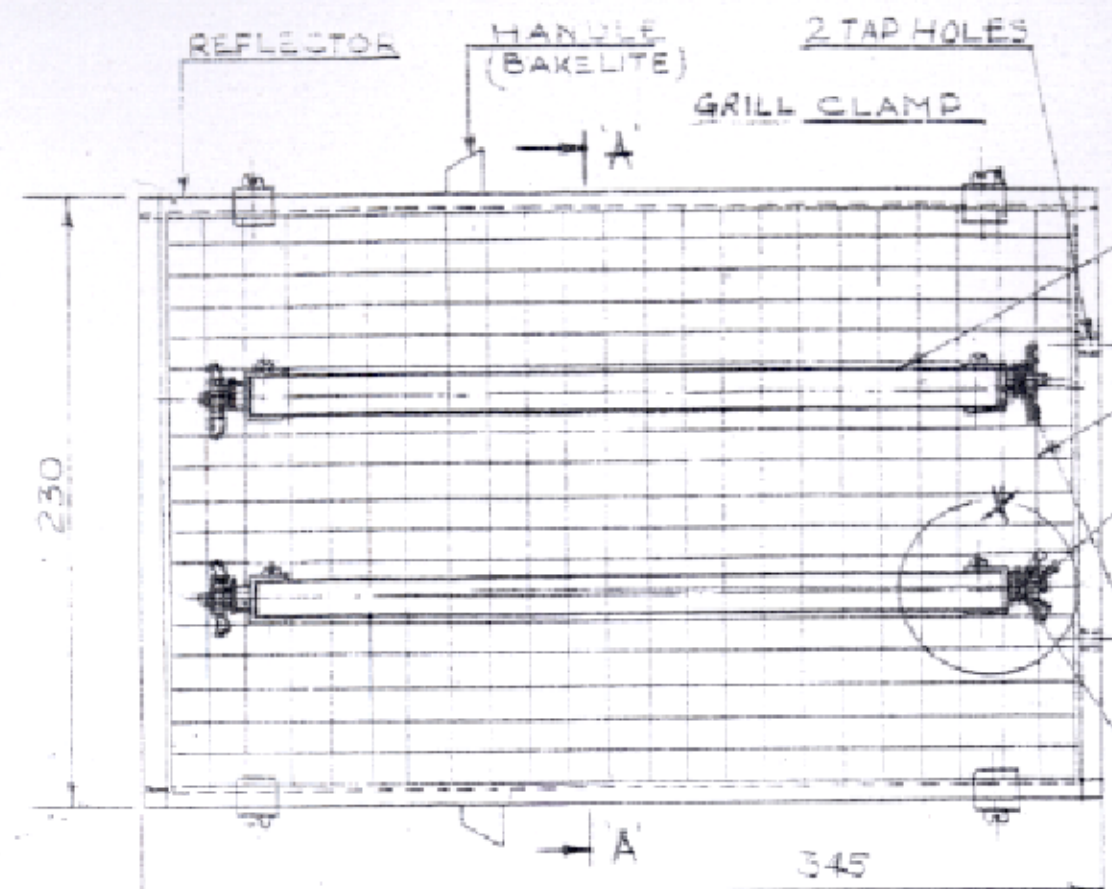
Indent No: C/6390/2015/1438/T

1	Supplier must be manufacturer or their authorized dealer/distributor/agent.
2	In case the supplier is an authorized dealer/distributor/agent, Supplier should submit tender specific authorization letter in original ink signed from the principle along with the offer.
3	The supplier should have supplied minimum 50 Nos. of Room Heaters, 20 Nos. of Heat Conectors or Air Blowers and 35 Nos. of Industrial Heaters in last 3 years. In support of this, supplier should submit the copies of Purchase Orders with details of address, Name, Telephone No. & e-mail address of the contact person of the customer.
4	BHEL reserves the right to verify information submitted by vendor. In case the information is found to be false/incorrect, the offer shall be rejected.

अरुण कुमार
09.06.2015
[अभियंता - वेब्स]

Manish
09/06/2015
(Manish Kumar)

SECTION A-A

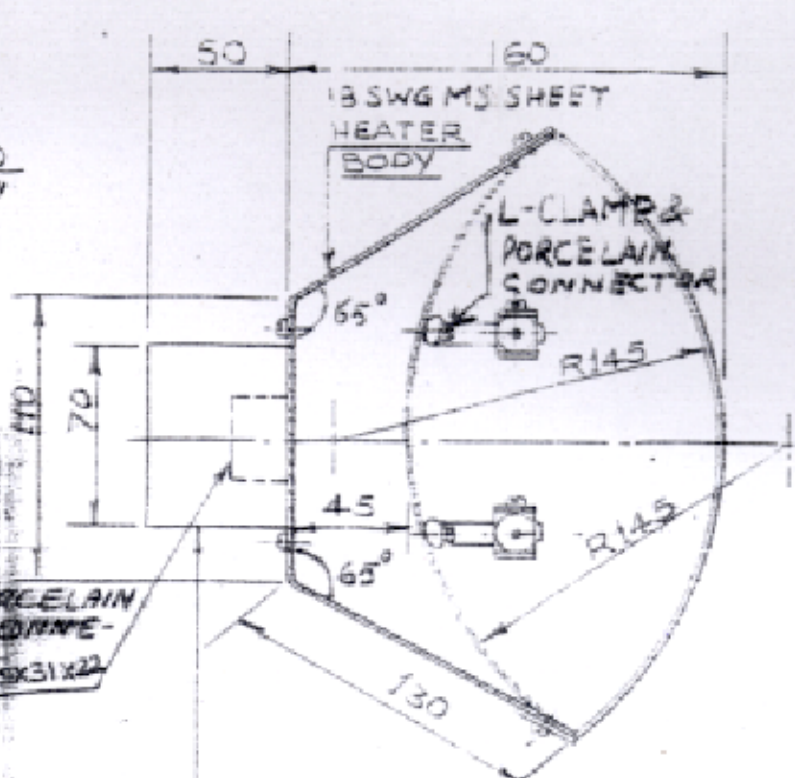


HEATER ROD
LENGTH 10"
Φ 5/8"

NET

BUTTER FLY NUT
(MAT. BRASS)

15 AMP
GLAZED PORCELAIN
TERMINAL BLOCK
C70 R.
OUT SIZE 39X31X22



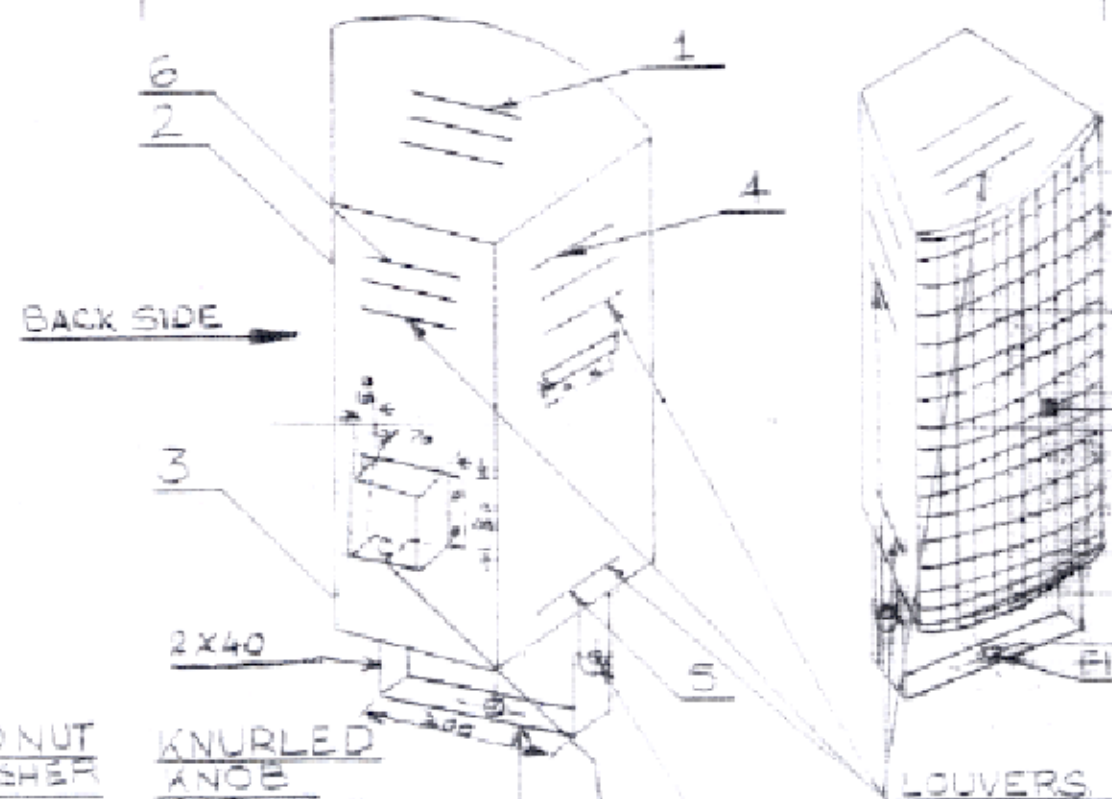
1. HEATING ELEMENT SHOULD BE MADE OUT OF NICHROME WIRE GRADE/KANTHAL 1D WIRE OF 24 SWG WOUNDED ON PORCELAIN TUBE. ITS POWER RATING IS ONE KW AT 230V END TERMINAL OF THE RESISTANCE ELEMENT SHOULD BE TERMINATED ON NICKLE PLATED BRASS CAP.

2. REFLECTOR SHOULD BE 24 SWG POLISHED STAINLESS STEEL.

3. WIRING SHOULD BE DONE OF 2.5 MM² STRANDED COPPER CONDUCTOR COVERED BY GLASS SLEEVE.

4. TERMINAL BLOCK OF THE HEATER SHOULD BE PORCELAIN BASE PROVIDED WITH SCREWS OF BRASS SUITABLE FOR CABLE TERMINALS.

5. FINISH OF THE HEATER:-
BODY SHOULD HAVE TWO COATS OF AIR DRYING PRIMER FOLLOWED BY BLACK ENAMEL CRACKLE PAINT OF DURABLE QUALITY HAVING HEAT RESISTANCE PROPERTIES ON THE OUTSIDE SURFACE AND PLANE BLACK ON THE INSIDE SURFACE.

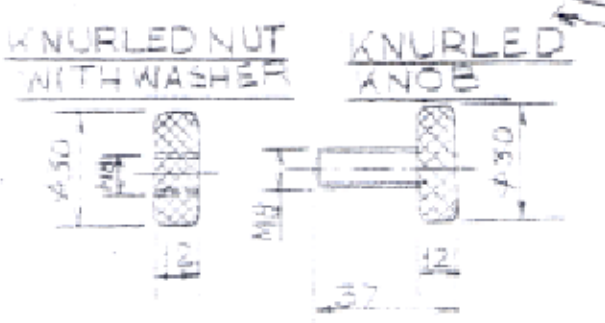


CROME PLATED GRILL
15 X 15 WITH WIRE Φ 1.5

DETAILS OF LOUVERS

DETAILS OF-X

SR. NO.	LOCATION	SIZE	APP. SPACING	QTY.	PHASING OF LOUVERS
6	BLACK SIDE TOP	3" 30MM	3 Nos.	DOWNWARDS	
5	RIGHT SIDE BOTTOM	3" 30"	1 "	-Do-	
4	RIGHT SIDE TOP	3" 30"	3 "	-Do-	
3	LEFT SIDE BOTTOM	3" 30"	1 "	-Do-	
2	LEFT SIDE TOP	3" 30"	3 "	-Do-	
1	TOP PLATE	3" 30"	3 "	BACKWARDS	



MATERIAL - M.S.

BHARAT HEAVY ELECTRICALS LTD

NAME: CHANDLI
 DESIGNED BY: N.P.S. TONY
 APPROVED BY: S.P. SINGH

DATE: 21.4.90
 S.P. 95
 30.3.90

SCALE: 1:2
 WEIGHT (KG):
 REF TO ASSY Dwg.

TITLE: **INDUSTRIAL HEATER**
 2KW / 230V.

DRAWING NO: EPD/15/710
 SHEET No. - 1 / NO. OF SHEETS - 1