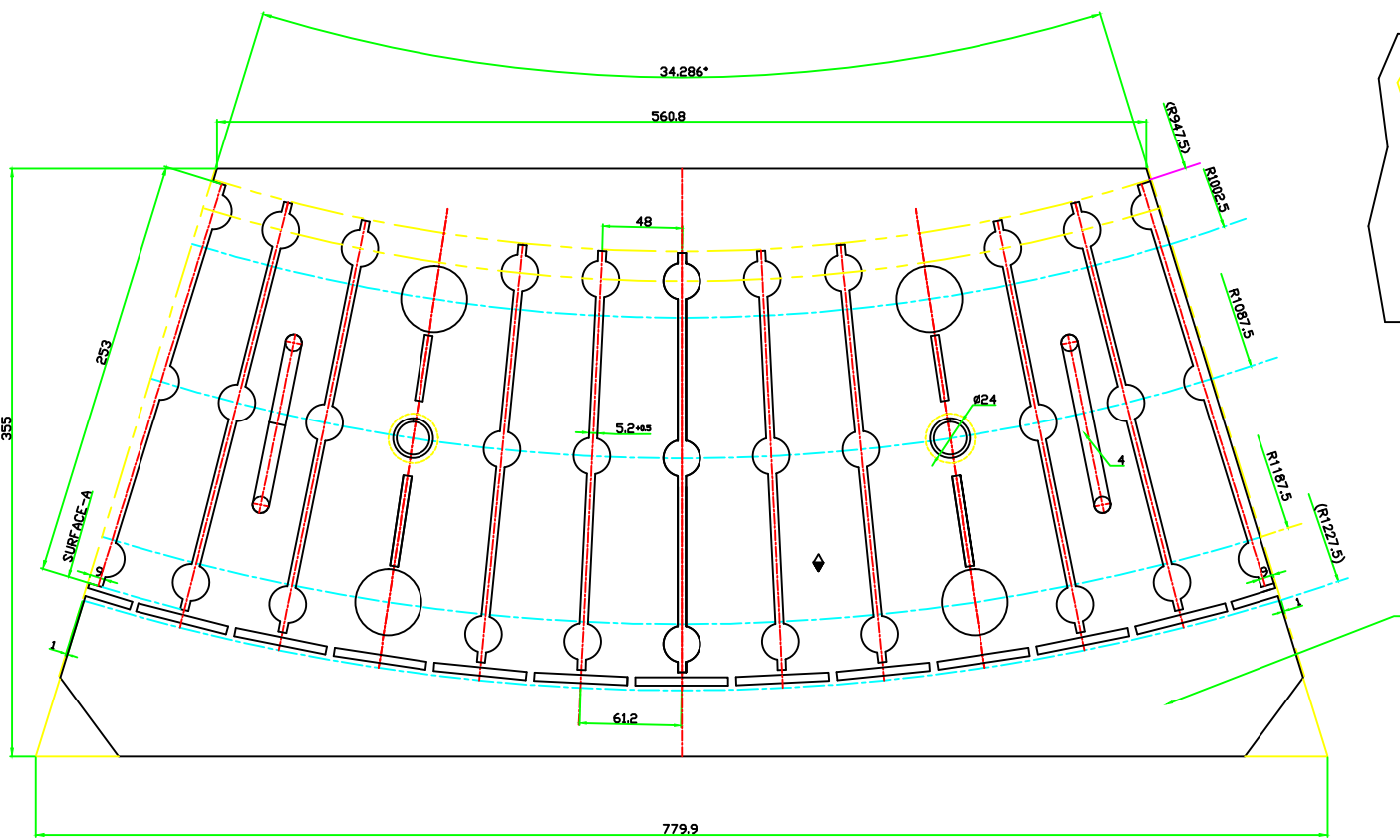
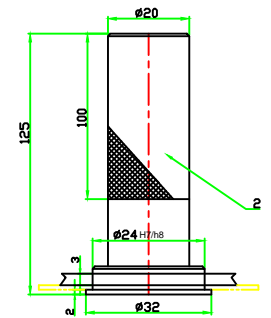
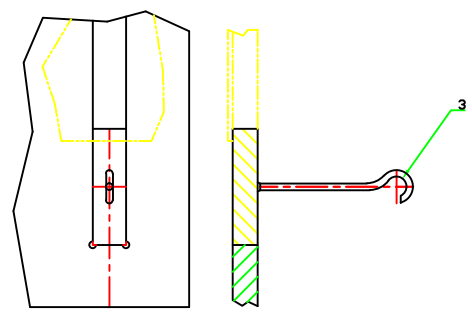


RO850-0642



SCHEME FOR VARIANTS



- 1-FOR WELDING OF SPACERS USE SURFACES MARKED 'A' AS REFERENCE
- 2-FIXTURE TO BE ACCEPTED AFTER TRIAL ONLY
- 3-FIXTURE TO BE CONSERVED AS PER TL-30007
- 4-FOR COMP.NO.21352101044,USE SPACER (IT.NO.3)VAR.01 R0850-0642/003
- 5-FOR COMP.NO.21352101046,USE SPACER (IT.NO.3)VAR.02 R0850-0642/004

◆ MARK
DRG. No.
TYPE OF PROD.
COMP.DRG.No.

ITEM No.	DESCRIPTION	DRAWING No.	MATERIAL CODE	UNIT	QTY
4	HANDLE	TL-10043			2
3	SPACER	R0850-0642/003		ONE EACH	1
2	GUIDE PIN	R0850-0642/002		2	2
1	TEMPLATE	R0850-0642/001		1	1

DATE	DESIGNED	CHECKED	DATE	DESIGNED	CHECKED
DATE	APPROVED	DATE	APPROVED	DATE	APPROVED
SCALE		SCALE		SCALE	
NTS		3.5		-	
TITLE			TITLE		
SPOT WELDING FIXTURE			SPOT WELDING FIXTURE		
DRAWING No.			DRAWING No.		
R0850-0642			R0850-0642		