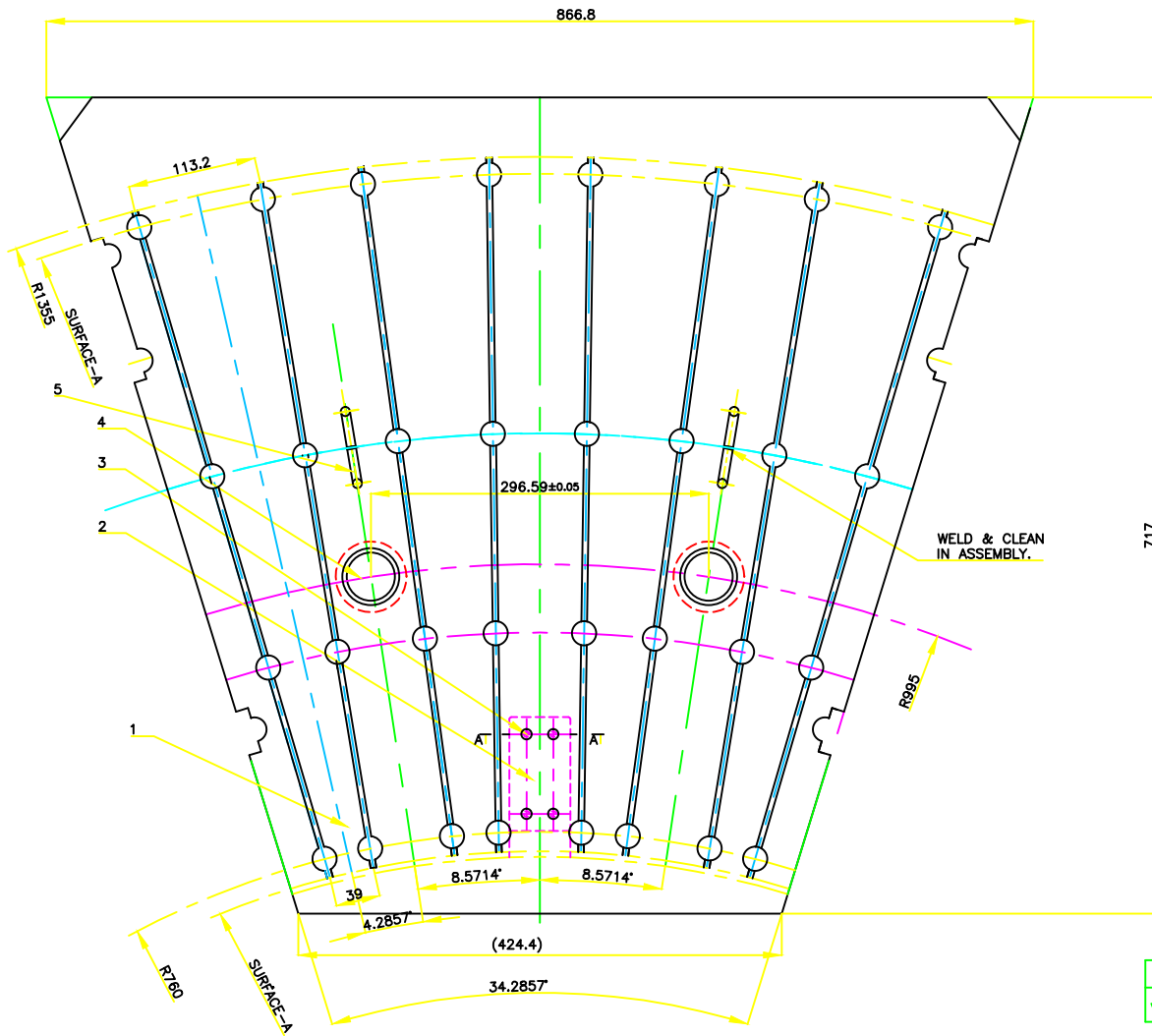
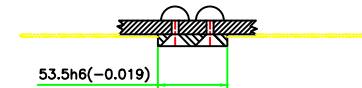


RO850-0645



SECTION-AA



◆ MARK  
DRG. No.  
TYPE OF PROD.  
COMP. DRG. No.

VAR.00	REMARKS	ITEM No.	DESCRIPTION	STD.	DRAWING No.	VAR.	MATERIAL SPECIFICATION	UNIT	QUANTITY
		5	HANDLE MB		TL 10043		Fe410WA AI10108	0.130	2
		4	LOCATOR		RO850-0645/003		40Cr1/En24 HW1037/AI10301	0.07	2
		3	RIVET SNAP #5x10				HW17402 306 AI17402	0.009	4
		2	GUIDE PLATE		RO850-0645/002		XT215C12 AI0822 IS3748	0.2	1
		1	PLATE		RO850-0645/001		ALUMINIUM 0642-203	5	1

GMS No./GR.SP.No.	STATUS OF DRG.	TYPE OF PRODUCT	COMP. DRG. No.	M/C TOOL TRANS No.	REF. DRG. No.
		THDF-115/67	2-1350401108-00	815	RO850-0302
DESIGN NAME	DATE	DESIGN ORDER No.	MODEL No.		
EMT	DLBEHL/S/-	600 MW	0704PT6TG00453	1-115	

GRADE OF UNTOL.DIM. :-	DRN.	NAME	DATE	No. OF
M/CG-S/M/Z MA0230208		BHARAT HEAVY ELECTRICALS LTD.	17/11/09	10/09/09
WELDING-A/B/C/D-MA0821104	CHL	HARDWAR	22/01/09	22/01/09
GAS CUTTING-T3/MA0821101	DRN.			
REV. DATE	ALTERED CHECKED	REV. DATE	ALTERED CHECKED	
DEPT.	JTE	SCALE	WEIGHT(Kg.)	REF. TO ASSY. DRG.
CODE	209	1:2	~5.5	
TITLE	SPOT WELDING FIXTURE		DRAWING No.	REV
			RO850-0645	

1. FIXTURE TO BE ACCEPTED ONLY AFTER TRIAL.
2. FIXTURE TO BE CONSERVED AS PER TL 30007.
3. USE SURFACE-A AS REFERENCE.