



An ISO
Company

BHARAT HEAVY ELECTRICALS LIMITED

(A Government of India Undertaking)

பாரதமிகுமின் நிறுவனம்

BOILER AUXILIARIES PLANT, Indira Gandhi Industrial Complex,
RANIPET- 632 406 (Tamil Nadu)

Ph: 04172-284030,
284690,284157, 241170
Email:
srsekaran@bhelrpt.co.in
mkmoorthy@bhelrpt.co.in
tenderoutsourcing@bhelrpt.
co.in

SECTION – I

NOTICE INVITING TENDER (NIT)

(This is only a request for an offer and not a Contract)

Sealed Tenders are hereby invited from experienced Contractors to finalize the Rates for entering into Annual Rate Contract for the year 2016-17 for Complete Manufacture of Aluminium casing support in accordance with the Technical Specification/BHEL Engineering Drawings/Quality Documents out of Raw Materials/Components to be supplied by BHEL, Ranipet as free issue.

Enquiry No. & Date	654015E Date 26-04-2016
Due Date & Time for Submission Of Offer	26-05-2016 Prior to 14.00 Hrs.
Date & Time for Tender Opening (Other than Price Bid)	26.05.2016 by 14.30 Hrs.,
Place Of Submission Of Offer	At Tender Box located in Outsourcing department, Third Floor, Administrative Building, BAP/BHEL/Ranipet-632406.
Place Of Tender Opening	MDP Hall At Third Floor/BAP/BHEL/Ranipet

This tender specifies a set of prequalification criteria defining the eligibility for the vendors to quote against a particular Rate Schedule/Group of Rate Schedules of this tender. The Bidders are advised to go through all the enclosed Tender documents terms & conditions detailed under **Sections I to XII, Annexures- A to L**, and Rate Schedules carefully before submitting their Offer.

All the **Annexures A to Annexure-L** should be filled, wherever applicable by the bidders without fail for evaluation of their offer and **all necessary / Self attested copies of the supporting documents** as required are to be attached.

The bid shall be submitted in three parts namely (1) EMD or Valid MSME certificate (2) Techno Commercial Bid and (3) Price Bid.


Kindly refer to the **Section-IV** – General Terms and Conditions of the tender for detailed procedure for submission of offers and details of exemption from submission of EMD for vendors registered with MSME

Kindly refer to Section-II to Section-IV for detailed scope. Sealed Tenders are hereby invited from experienced Contractors for the above scope.

Contact details / address for any clarification and for Offer submission.

Senior Manager-(Contracts)
Outsourcing Department, Boiler Auxiliaries Plant
Bharat Heavy Electricals Limited, ,Ranipet-632406
Phone : 04172-284030, 284158, 241170, 284323
E-Mail : mkmoorthy@bhelrpt.co.in,

Sr.Manager(Contracts)/OS

	Bharat Heavy Electricals Limited (A Government of India Undertaking) Boiler Auxiliaries Plant, Ranipet – 632 406		☎: 04172-284030, 284690, 241170
	OUTSOURCING DEPARTMENT		E-Mail : tenderoutsourcing@bhelrpt.co.in
AN ISO 9000 COMPANY	654015E	Due Date & Time for submission of offers	Prior to 14.00 Hrs On 26.05.2016
Enq-Dated	26.04.2016	Date & Time of Tender opening	By 14-30 Hrs O 26.05.2016
<u>SECTION II</u> Techno Commercial Terms & Conditions of the Annual Rate Contract - 2016-17 for OS- Main for Complete Manufacture of Aluminium Casing Supports			

Sealed Tenders are hereby invited from experienced Contractors to finalise the Rates for entering into Annual Rate Contract for the year - 2016-17 for Complete Manufacture of Aluminium Casing Supports in accordance with the Technical Specification/BHEL Engineering Drawings/Quality Documents out of Raw Materials/Components to be supplied by BHEL, Ranipet as free issue.

1.0 Contract period for this Enquiry is up to one year from the date of finalization of the contract.

1.1 For study and quoting of rates for various Rate Schedules, Representative Drawings, sketches, against the Rate Schedules indicated in the **ANNEXURE-C1** are made available for downloading. The sample copies of actual drawings are kept at BHEL office for vendor study on all working days from Monday to Saturday from 09.00 Hrs to 16.00 Hrs. (up to 3 days prior to the due date for submission of tender).

1.2 Vendors are requested to have a perusal of these drawings, QWI,WPS, etc., before submitting their offer. **The offer has to be submitted Only in ANNEXURE- C1** duly signed therein by the authorized person of the Contractor with rubber stamp in the space provided in **ANNEXURE- C1**. No deviation or change from the Tender conditions will be entertained and BHEL reserves the right to reject such offers.

1.3 Based on the Rate contract, to be finalized, the Firms shall accept and undertake all jobs awarded to them under various Rate Schedules allotted to them and execute them to the satisfaction of BHEL. Failure to comply with this requirement will be viewed seriously.

1.4 BHEL will conclude that the offer has been submitted by the firm, fully understanding all the requirements both explicit and implied and other conditions and accepting the same. After tender opening, contractors do not have any right to change / alter any of the conditions either partly or fully. Offers of any such firms doing so, will be rejected.

1.5 Vendors are requested to refer to **SECTION-IV** of this tender for (a) the applicability of EMD, (b) waiver available for EMD for MSME vendors and (c) procedure involved in submitting the offer in **three parts**.

2.0 FIRM RATES :

- 2.1 Please quote **FIRM** rates per KG., per MT., per No., per Meter., per Square Meter., etc. as called for in **Price Bid format ANNEXURE-D1** which are applicable to the firm (for Conversion Work only). The rate shall include the following and the operations called for in the conditions indicated in the tender.
- (a) The rate shall include all consumables for material preparation, Plasma cutting (if required), sizing and welding as stipulated in the drawings/QWI,WPSs /welding procedures and any indirect materials required for fabrication.(Any change in the consumable specification implemented /effected after finalizing the contract shall be reviewed and the rate shall be adjusted accordingly.)
 - (b) The rate shall be inclusive of the Transport Charges (inclusive of Toll Charges, if any) for Collection of Raw Material with allowances as specified in **Clause 3.0** and other components from Stores at BHEL, Ranipet and Dispatch of finished goods to Shipping/Stores at BHEL, Ranipet. (The rate shall be common for all vendors irrespective of the location/distance of their factory from BHEL, Ranipet). No extra transport charges shall be allowed for multiple collection and deliveries.
 - (c) In case of transfer of raw material/semi-finished items from one vendor to another vendor, through IAWTV, the responsibility for collection of materials including the cost of transportation and handling etc. shall rest with Second Vendor (fabrication vendor dispatching the finished goods).
 - (d) The Rate shall include Transport charges (inclusive of Toll Charges, if any) for Return of balance material to BHEL, Ranipet Stores.
 - (e) The rate shall include machining of castings, forgings and fasteners which are supplied as free issue by BHEL, Ranipet.
 - (f) The rate shall include safe delivery of the finished fabrications as per QWI,WPSs and Drawings to withstand transit damages by rail/road.
 - (g) For safe delivery of export consignments as per QWI,WPSs / DRGS rates shall be quoted for the relevant extra rate schedules for payment of conversion charges shall be claimed as per remarks in the IR (**RS E72**). However in these export cases recovery on normal safe delivery charges will not be done. The extra rate schedule rate for the same shall be quoted accordingly. Supply of packing materials for such export packing will be supplied by BHEL free of cost.
 - (h) The rate shall include for protecting machined/threaded areas to avoid physical damages while handling, transportation and storage.
 - (i) Splicing of Structural, shall be done with prior permission from Outsourcing, BHEL, Ranipet.
 - (j) All Painting charges including Red Oxide painting / application of rust preventive oil as applicable shall be payable extra as per applicable extra Rate Schedule.
 - (k) Stenciling of Finished Product for Identification as per **Clause 8.5**
 - (l) The rate shall include for rectification of raw materials such as straightening, removal of bend, twist, etc. wherever necessary.
 - (m) Blank
 - (n) The rate shall include **LPI wherever required as per QWI,WPSs / Drgs /Sketches**. All other NDT charges like MPI/UT/RT etc payable extra as per **Clause 9.0**.
 - (o) Offering the jobs for inspection to BHEL /Customer or its authorized inspection agency is in Contractors scope and the quoted rate shall include the same.

- (p) Blank
- (q) The description and PGMA's given in the each Rate schedule is only indicative. Any items of similar nature shall be loaded against Rate Schedule based on the work content. For payment purpose, only Rate schedule numbers shall be considered.
- (r) Wherever Trial assembly is called for in the drawings/QWI,WPSs or by Inspection, the charges as per extra rate schedule shall be payable extra. It should be indicated in IR.
- (s) Blank
- 2.2 The rates shall be FIRM and not subject to any variation/escalation on any account during the validity of this Contract period. The rates are operative for placement of job work orders on Rate Contract basis to be entered into between BHEL and the Contractor.
- 2.3 The total available load will be distributed to the Contractors from time to time with whom Contract is entered into and to that contract the addenda shall be placed in a phased manner subject to the rank L1,L2,L3..,availability of potential and also depending upon vendor performance such as collection of materials in time, manufacture according to our plans/requirements, meeting quality requirements, sequential and timely dispatch of components, Prompt & Quick response, prompt returning & accounting of balance materials, Settlement of outstanding dues if any, and also the maintaining of minimum required facilities available at the Contractor's works to meet the job requirements and submission of such other reports as called for then and there.
- 2.4 The L1, L2 and L3 Vendors will be loaded for more quantum, subject to other performance criteria specified above.
- 2.5 BHEL does not guarantee ordering of any minimum quantity or does not guarantee more share for the lowest tenderers. However, if the L1-contractors are performing well in terms of sequential dispatches and required tonnage interalia meeting the requirements laid down above, the same will be considered during loading.
- 2.6 It may be noted that timely delivery of components is the essence of the Contract. (The scope of Machining / fabrication, Customer approved Quality plan will be indicated in the PO as Addenda).
- 2.7 In case if the quantum of load is beyond the capacity of vendors in the opinion of BHEL or for shorter delivery requirements, BHEL reserves the right to extend/award the contract for manufacture of items covered herein to other probable new or alternative sources, without prior intimation to the contractors and BHEL's decision is final in this regard.
- 2.8 The Contractors are responsible till the Finished/Semi-finished components are safely deposited to BHEL, Ranipet. They should carefully pack, load, stack by providing wooden reapers, etc. for avoiding damage during transit and lash the consignment properly at the time of despatch so that the consignment reach the destination safely.
- 2.9 Job Work orders will be issued after entering into Rate contract with the Sub-Contractors. Discrepancy in the JWOs if any, has to be settled immediately then and there within 10 days from the date of Job Work Order.

3.0 Raw Material Issues and Accounting :

The weight indicated in GMS/DRG/ and or as per Scope indicated in the PO addendum will be the basis for accounting of raw materials issued. For billing conversion / transportation charges if any the weight indicated in GMS/Drawing only will be considered. For Raw Materials such as Stainless Steel and Aluminium, no process allowance is applicable. Other

Raw materials will normally be issued with process allowance as given below for economical operations.

Description	Invisible wastage	Working allowance	Total process allowance
Sheets (Carbon Steel)	2%	1%	3%
Plates (Carbon Steel)	2%	2%	4%
Structurals (Beams, Channel, Angles, Flats Rods, Pipes, Tubes, Packing etc..)	1%	Nil	1%
Components, Fasteners etc..	Nil	Nil	Nil

Cleared material shall be collected by the Contractors at the earliest without any delay. If BG limit becomes a constraint to issue the cleared materials, vendor shall arrange for additional BG within 2 weeks time from JWO date/material cleared date, prior to material collection.

- 3.1 The Cutting Plans should be of "Optimum only", in order to maximize the utilisation of the material issued, specifically where the left out material can better be used for other jobs. The balance material, if any after Cutting Plan approval/ machining / fabrication shall be returned to our Stores at Contractor's cost. BHEL reserves the right to call for the returning of the balance material not withstanding its designation (ie. Whether Scrap / Big-size-Scrap).
- 3.2 Blank
- 3.3 Balance material arising out of issued quantity shall be returned by sub-contractor. However, if original issued quantity is insufficient due to the shape or size required to be cut, cutting plans may be furnished for BHEL approval WITHIN ONE WEEK OF DRAWAL of Raw materials(However for Spiral Casing, Suction chamber and Silencer required for FAN Assy the Cutting Plan to be submitted within 15 days). Any off cut available from the original issue should be returned to us as per our approved cutting plan. Wherever the materials are supplied by BHEL for mockup test, welders qualification test, Etc., the material is to be treated as scrap on weight basis and material accounting to be settled accordingly.
- 3.4 Wherever firm comes across receipt of excess material due to the error in GMS/Drawings that is to be brought to the notice of AGM/OS immediately. Since material is issued on weight basis, any excess material received on account of section weight variation or otherwise, the same is the property of BHEL, not withstanding the status of MAS. Such information shall be declared by the supplier to BHEL immediately.
- 3.5 Inventory statement has to be submitted every month by the firm for the free issued materials. If the Fabricator fails to produce or properly account the materials so issued, BHEL, Ranipet will have the right to take further action as deemed fit including recovery of the value of the materials along with the respective administrative charges and statutory levies from the running bills of the Fabricator / temporary suspension of load / termination of contract / de-listing.
- 3.6 Any act of Contractor resulting in dishonest misappropriation or conversion of the materials so issued for his own use shall constitute the offence of Criminal Breach of Trust under Indian Penal Code and /or such other offences under any other provisions of law and the Contractee shall have every right to proceed against the Contractor under Criminal Law in order to ensure proper punishment to such perpetrator/s for the said offence/s. In such cases, BHEL shall take all necessary steps to recover the material available with those firms.
- 3.7 Movement of BHEL materials from Contractor's premises to any other Firm(s), if necessary, for the purpose of production related work shall be documented properly, signed by the sender & receiver and the same to be authenticated by the concerned OS official, otherwise such materials will be treated as shortage by BHEL Accounts.

3.8 Protecting the material issued by BHEL under safe custody until completing the delivery as required is vendor's responsibility.

4.0 Process Allowance: As shearing and Punching process are involved, no process allowance is applicable for Stainless Steel and Aluminium materials.

4.1 Wherever shearing and punching, raisal of supplementary MIV are involved, No process allowance is applicable. No invisible wastage will be allowed.

4.2 Blank

5.0 Scrap / OFF-Cut Norms :

SI	Description	Scrap Size (mm)	Off Cut Size (mm)
1	CS/AS Sheets & Plates	Below 500 X 250	500 X 250 & above
2	Rolled Sections Including Structural /rods (other than tubes/pipes): Length	Below 1000	1000 & above
3	RHS, SHS, Tubes and Pipes: Length	Below 500	500 & above
4	SS Non Ferrous Sheets & Plates	Below 500 x 250	500 x 250 & above
5	SS Non Ferrous Structural, rods, tubes, pipes: Length	Below 250	250 & above
6	Haste Alloy Length	Below 250	250 & above
7	Big Size scrap Length x Breadth CS/AS	(2500 & above)X (150-249)	-----
8	WSTE/NAXTRA Materials.	Below 500 x 250 Below dia 350	500 x 250 & above Dia 350 & above

The issue of various wool, CAF Joints, Asbestos rope etc. will be as per required Quantity. Excess material issued if any will be treated as scrap in view of practical problems (Re-Packing, verification, receipt, accounting, storage etc.)

- a) All Off-Cuts (Ferrous, Non-Ferrous, SS etc.) are to be returned to BHEL stores with RSV at contractors' cost.
- b) Returning of Off-Cuts/Prime material to BHEL is mandatory. Failure to return the materials (prime material/off-cut) will entail recovery of the cost of materials along with Excise duty, VAT & other Statutory levies as applicable plus departmental/administrative charges fixed from time-to-time **cl.6.7** from any of the running bills of the supplier/other means of recovery available for the non-returned quantum. The non returned quantum of material (Prime/off-cut) will be as per FMAS approved by BHEL.
- c) Wherever the materials are supplied by BHEL for mock-up test, welders qualification test etc. (except for Nitriding & Case Hardening), the same will be treated as scrap as classified above.

5.1 All scraps (Ferrous, Non-ferrous, SS, CS/AS, WSTE etc.,) including Turnings and borings need not be returned to BHEL. Contractors can dispose the above scrap, on completion of Final-Material-Accounting for the respective IP. Necessary cost shall be recovered along with ED, Sales Tax and any other statutory levies if applicable.

5.2 The Rate Schedules for recovery of different types of scraps are as follows:

Sl.No.	Description	Rate Schedule	Rate/MT Rs.
01	Recovery rate for Scrap of CS/ AS, Asbestos, wool, CAF etc.,	E41	19000.00
02	Big size scrap (CS/AS sheets/plates)	E42	23500.00
03	Recovery Rate for Scrap of Stainless Steel (NON Magnetic), NON –Ferrous Metals.	E43	95000.00
04	Recovery Rate for Turnings and Borings scrap of CS/AS	E44	15900.00
05	Recovery Rate for Turnings and Borings scrap of SS Non magnetic , Non Ferrous	E45	41590.00
06	Recovery Rate for Turnings and Borings Scrap of Stainless Steel- Magnetic	E46	25000.00
07	Recovery Rate for Stainless Steel magnetic scrap	E73	33700.00

5.3 For machining/drilling jobs, the Turning & Boring scrap generated shall be accounted and recovery will be made as per Scrap norms as given in **Cl. 5.0 and 5.2 and 5.1. For SS and non ferrous T&B scrap for 100% will be recovered.**

6.0 Disposal of Scrap and Return/Accounting of Balance Materials:

Contractors who wish to dispose off the scrap from their end are permitted to do so subject to the following conditions:

- (a) They should possess Excise Registration under CE Act and TIN NO. under TNVAT-2006. Copies of the same shall be furnished to Manager /Finance/BHEL, Ranipet.
- (b) The recovery for the above all categories of scrap will be as per the Final Material Accounting Statement (FMAS) approved by BHEL and as per the ARC Rates signed by BHEL and Contractors.
- (c) However Excise Duty and VAT applicable for all the scrap disposed off at the Contractor's end will be to their account. BHEL will not reimburse this amount. Necessary excise formalities are to be followed by the Contractor.
- (d) Excise Duty and VAT on scrap will be recovered as applicable
- (d) Scraps shall be disposed off only after submission and approval of Final Material Accounting Statement (FMAS) by BHEL

6.1 Wherever attested materials are issued, the balance materials are to be returned only in the attested condition. Otherwise **Cl. 6.7** below will be applicable.

6.2 The materials rejected due to reasons attributable to vendors like (a). Faulty workmanship, (b). Improper storage of raw material issued by BHEL (c) improper handling (d) improper packing etc.. will entail recovery at prime material's cost as per **Cl. 6.7.**

6.3 The materials rejected due to other than reasons **u/c.6.2** shall be returned to BHEL,Ranipet Stores failing which recovery will be made as per **Cl. 6.7.**

6.4 The material supplied by BHEL, Ranipet. shall properly be utilized as per the Scope in Contract/drawings/QWI,WPSs in job work order to meet the design and quality requirements of the product. Hence economic cutting plans are required to be submitted by the Contractor for approval in the following cases:

- (a) For sheets & plates where the original issued transferred (IUTV) quantity is more than 5 MT.
 - (b) Whenever the issued quantity is insufficient owing to shape or size.
 - (c) All stainless steel/Haste alloy/Non-ferrous items.
 - (d) Excess issue in weight against demanded quantity wherein the excess quantum is more than off-cut norms (vide Cl. 5.0).
 - (e) For items like flanges, rings, cover plates, etc. where demanded weight is in excess of net weight with higher rate of process allowance. (However cutting plans need not be submitted where the collected material weight and net weight difference which is less than off-cut weight). In any case, cutting plan need to be submitted for issue weight 5 MT and above.
- 6.5 However, in working out such economic cutting plans, it is to be ensured that the details furnished by the contractor are as per current GMS, Job works order & IOM and meets the requirements as prescribed in QWI,WPSs shall have to be adhered to. After the approval of the cutting plans, any off-cut, available from the issues made either in original or in supplementary shall be returned to the BHEL, Ranipet Stores at the Contractor's cost. The cutting plans as approved by the Outsourcing, BHEL, Ranipet shall be kept at the Contractor's premises and to be made available as and when demanded by the BHEL Officials or their representatives. It should also be ensured that the jobs shall be as per the approved cutting plans. All returnable materials (prime/off-cut) as per Cutting Plan approval covering letter shall be returned to BHEL, Ranipet Stores immediately without waiting for the W.O./P.O completion to avoid any payment hold and subsequent recovery.
- 6.6 Whenever machining / fabrications are done without proper approved cutting plans, any loss of material arising due to the same will be recovered at prime materials cost including the process allowance indicated in CL. 3.0 & 4.0 plus Departmental / Administrative charges fixed from time to time (vide Cl. 6.7.). In addition, statutory taxes, duties and levies etc., applicable will also be recovered from the Contractor and also other actions as deemed fit will be taken and no claim for refund will be admitted by BHEL, Ranipet. BHEL's approved cutting plan is final.
- 6.7 Failure to return the materials (prime/off-cut) will entail recovery of the value of the materials plus departmental/administrative charges fixed from time to time. Currently the departmental/administrative charges are 25% for indigenous material and 50% for Imported materials on the material value. In addition, statutory taxes, duties & levies as applicable will also be recovered and no claim for refund will be admitted by BHEL, Ranipet. The rate of departmental and administrative charges as applicable from time to time irrespective of the date of failure will be applicable. Besides penal interest will be levied on the material value, for the period starting from date of issue of material.
- 6.8 Where an increased allowance over the process allowance as stated in CL. 3.0 & 4.0 is necessary, the same will be issued after scrutinizing and approval of cutting plans.
- 6.9 For the purpose of material accounting after completion of a particular WO, BHEL/OS department will issue a preliminary material accounting statement thro' E-mail, the next day of completion.
- (a) The Contractor shall respond within 7 days of receipt of Preliminary MAS, Either by Accepting the Pre-MAS OR submit their own MAS (Contractor/Firm-MAS) in the case if the Pre-MAS is not in line with the requirement.
 - (b) Any discrepancy Like weight correction, DU correction, variation in off-cut /scrap quantum etc., as indicated in Pre-MAS will have to be reconciled with the Material Accounting section with necessary proof of documents within a week from the date of issue of Pre-MAS. If reconciliation is not done within a week, it will be treated that Pre-MAS is correct in all respects

- (c) If the Pre-MAS is accepted by the Contractor, BHEL will prepare, within 7 days, the Final-MAS.
- (d) In case if Pre-MAS is not accepted by the Contractor, the Contractor/Firm-MAS submitted, if any, by the Contractor will be considered and if no such Contractor/Firm-MAS is submitted also, BHEL will prepare a Provisional-MAS and send through email, within a week.
- (e) If the material (CS/AS) to be recovered as per BHEL MAS working is within plus or minus 10 Kgs with respect to Contractor/Firm-MAS, then final MAS will be released with out Pre-MAS acceptance.
- (f) For Deleted /Diverted Job Work orders , Final material accounting should be settled within 14 days time, after deletion/diversion. Otherwise, BHEL will prepare Final-MAS on completion of 14 days of IOM date on suo-motto basis. For exceptional cases with reasons attributable to BHEL, a further relaxation of 1 week will be given on the certification of respective field officers.
- (g) The response if any received from the Contractor, will be studied and considered and Final MAS will be prepared. In case if no response is received, the provisional MAS will be treated as 'Final' MAS and accordingly, Final material accounting statement (FMAS) will be issued. BHEL will prepare the FINAL MAS within 30 days of DC control.
- (h) After completion/cancellation of (Issue Position) IP the Contractor has to submit Contractor/Firm MAS comprising material issue cum working details, contract and receipt statement as per the format specified by BHEL for entire IP within 7 days from the date of delivery of last despatch or on date of submission of 100% invoice whichever date falls earlier of the respective IP. Further to, Contractor should certify the submission of bills with 4 (5)(a) Challan's duly signed with seal in part II including completion of all transactions like cutting plan approvals, return of BHEL Material on RSV, IUWTV controls and submit along with MAS.
- (i) Once the IP is closed as mentioned above no re-opening of IP except recovery from running bills will be entertained.
- (j) The contractor shall be bound by the accounts, statements acknowledgement of materials, BHEL material issue documents, receipts etc., wherever signed by their representative.
- 6.10 Return of any balance material to our applicable Stores-Ward at BHEL / Ranipet immediately after cutting plan approval.
- 6.11 Recovery towards non-return of balance material as per FMAS will be done as per Contract norms along with statutory taxes, duties & levies as applicable from any one of the running bills OR from other means of recovery available Hence, any correction after the issue of FMAS, the job work order will be treated as closed in all respects thereby any requests towards refund of recovery, if any, will not be entertained.
- 6.12 Wherever MAS not required to be submitted, in case if the material (CS/AS) to be recovered as per our MAS is within (+) or (-) 10 Kg and there is no material collection is involved, BHEL will prepare Final-MAS on suo-motto basis and Recover/Net-weight credit will be provided accordingly.

- 6.13 Please note that the Contractor is responsible for prompt material accounting and settlement of outstanding dues towards non-return of balance material. Repeated occurrence of inordinate delay in settling the material accounting / outstanding dues will entail BHEL the right to terminate the contract forthwith or to impose temporary suspension on further loading at the discretion of BHEL, Ranipet. Also in case of non-return of material or non-submission of material accounting statement, BHEL reserves the right to en-cash the Bank Guarantee / Fixed Deposit Receipt submitted by the Contractor and initiate legal action against the Contractor against this contract OR any other contract, in addition to the other means of recovery from contractor, available with BHEL.
- 6.14 The raw material issued to the Contractor as free issue shall remain the property of BHEL, Ranipet. The Contractor shall use the above material only for the execution of BHEL'S contract/addenda and for no other purpose whatsoever. The Contractor shall be responsible for the full value thereof to be assessed by BHEL, Ranipet whose decision shall be binding on the Contractor, The Contractor shall be liable for the loss or damage to such property while such property is in the possession or under the control of the Contractor, their employees, workmen, representatives or agents or any other person connected with the Contractor. The Contractor should execute an agreement in **Rs. 100/-** non- judicial stamp paper and maintain the secrecy of the design, know how of BHEL products.
- 6.15 All the materials of BHEL, Ranipet shall under no circumstance be hypothecated/leased/liened /encumbered to any bank or to any lending Institution or to any party whomsoever. It should not also be shown as the Contractor's assets in any of the statements of the Contractor to any party.
- 6.16 The Contractor shall, whenever required, produce the materials supplied as free issue by BHEL, Ranipet in the form of raw material, semi finished or fully completed boiler components to BHEL officials visiting the Contractor's unit for verification purposes. If the Contractor fails to produce or properly account the material so issued, BHEL, Ranipet will have the right to take further action as deemed fit including recovery of the value of materials along with the respective administrative charges and statutory levies from the running bills of the Contractor (with BHEL,Ranipet and with other Units of BHEL) and also any or all of the actions such as, Suspension of business dealing, temporary suspension of loading, termination of Contract, holding the payment due etc., Similarly for the claim made by any units of BHEL (on account of such vendor) to the BHEL,Ranipet, the Bank Guarantee submitted to BHEL,Ranipet will be encashed.
- 6.17 As and when required/applicable, BHEL, Ranipet will transfer(or advice for returning u/RSV) the balance material available including scrap size available for which PO/Issue Position(IP) is not closed, from one Contractor to the other contractor/other IP of the same contractor. For this, necessary credit will be given in material accounting, the material transfer emanating from Outsourcing, BHEL, Ranipet is to be honored by the Contractor within 15days or otherwise recovery will be made at the prime material cost., Any difficulty for effecting such transfer shall be brought to the knowledge of OS/ BHEL, Ranipet officials immediately.
- 6.18 The Contractor is responsible for submission of CLEAR material accounting statement (MAS) ie. ensure that all transactions are completed (including IUWTV/RSV, supplementary material collection, submission of cutting plan, etc) within 7days from the date of completion of work order & failing , without prejudice to other rights under Contractor, law or otherwise, which MAS will be closed suo motto basis and recovery of the scrap/off-cut will be effected after adjusting of balance payment due to the Contractor from any of the running bills. Delay in settling the material accounting will entail BHEL the right to terminate the contract forthwith or to impose a temporary suspension on further Loading at the discretion of BHEL, Ranipet.

- 6.19 For any IP if the total requirement of carbon steel plates of 5mm to 10mm thick is 20 kgs or less Contractors have to use the required material from the balance material of other work orders. However, these quantities will be adjusted as Net Weight Credit (NWC) during material accounting.
- 6.20 Raw materials will be loaded by BHEL, Ranipet either in lorries/trailers/ bullock carts and can be overseen by Contractor's representative at BHEL Stores / Shop. Shortage or variation in quantity, size and weight shall not be accepted once the material leaves BHEL, Ranipet Stores. Raw materials will be issued by BHEL, Ranipet, only after the receipt of necessary Bank Guarantee as per **Cl.20.0 and 21.0.**
- 6.21 Where an entity (whether a proprietorship, partnership, company, Hindus Undivided Family or otherwise) commits a default or breaches the Contract and the proprietor/ partner/ director/ member of such entity is also a proprietor/ partner/ director/ member of another entity that is registered with BHEL (in Ranipet or any other unit of BHEL), BHEL shall have the right to recover losses due to the default or breach, whether direct, indirect or consequential, either from the defaulting/ breaching entity or the other said entity or both. Such right shall also include the right to encash any security (in any form such as but not limited to bank guarantee, demand draft, FDR, etc.) furnished by either or both entities. Without limiting the applicability of the foregoing, it shall not be a defence to the other said entity for enforcement of such a right that:
- (a) Both entities are legally distinct/ separate entities, or
 - (b) The management of the entity/ partners/ directors/ members of such other entity were not aware that the proprietor/ partner/ director/ member of the defaulting/ breaching entity was also a proprietor/ partner/ director/ member of the other said entity.
- 6.22 The Contractor shall be bound by the accounts, statements acknowledgement of materials, receipts etc., wherever signed by their representatives.
- 6.23 The value of the materials and statutory levies towards non-return of off-cut/scrap wherever applicable will be calculated at the rate prevailing as on the date of accounting and demand thereof by BHEL irrespective of the date of failure for return of the off-cut/scrap by the Contractor.
- 6.24** Blank
- 6.25 Blank
- 7.0 Surface Preparation:** Surface preparation to a cleanliness level of Swedish Standard Protective Coating (SSPC) Sa 2 ½ (near white metal finish) i.e " Removal of loose mill scale and loose paint, to the degree specified, by the impact of abrasive blast propelled through nozzles or by centrifugal wheels. Near white blasted surface shall be free of all visible oil, grease, dirt, mill scale, rust, paint, oxides, corrosion products, and other foreign matter, except for staining limited to not more than 5% of the surface area. Such staining may consist of light shadows, slight streaks or minor dis colouration caused by stains of rust mill scale, or stains of previously applied paint.
- 8.0 PAINTING:** All painting works shall be part of main fabricators responsibility, including cost of paints. However extra rates are payable as per extra rate schedules (listed under Heading "Charges for Painting" in **Section-III-A** titled "List of Extra Rate Schedules"). The fabricators are advised to quote their rates for each Rate Schedule per Sq. meter basis. ALL PAINTING CHARGES (PRIME/FINISH/SPECIAL PAINTS ETC) PAYABLE EXTRA AS PER EXTRA RATE SCHEDULES. The paints shall be procured from BHEL-Approved paint manufacturers list given in **Section-VIII**

- 8.1 The finished/Semi-finished components shall be cleaned by power operated wire brush and painted with primer as per QP/ QWI,WPSs/ CIS purchased from our approved paint manufacturer's list hosted with this tender as **Section VIII**.
- 8.2 For all painting over and above the Primer painting whenever required, the finish paint as per applicable QWI,WPSs/CIS shall be applied.
- 8.3 For all painting including primer painting , the charges shall be payable as per applicable extra rate schedule.
- 8.4 For painting of Extra Coating thickness with reference to coating thickness mentioned in the extra rate schedule description pro-rata charges shall be payable extra based on IOM issued by BHEL/OS.
- 8.5 Unless stated specifically Foundation material, columns up to zero level need not be painted with red oxide. Further, the fabricated semi-finished components shall be legibly stenciled with the Project Name, Work Order Number, DU Number , quantity, weight, Sub-contractor's code Number, match mark no., etc., for identification and dispatched as may be advised.
- 8.6 Sub-contractor code number alone shall be punched using ½ inch letter punch and bordered suitably for easy identification. All the identification marks shall be coated with an overcoat of transparent varnish to protect against weather.
- 8.7 In respect of works contract Sale Tax as per TN VAT please **refer 27.1**
- 8.8 Application of one coat of the specified primer painting is to be done immediately after Blast cleaning as per the stipulated dry film thickness (DFT) normally varies from 35 microns to 100 microns.
- 8.9 Machined surfaces and Retainers shall be applied with rust preventive oil in place of red oxide.
- 8.10 Whenever blasting by Grit/shot for surface preparation is to be done, the applicable ARC rates will be payable extra. The allied To&Fro Transport charges are also payable extra as per the respective extra Rate Schedule and a self certified declaration from the fabricator (certified by Field officer) is to be enclosed by the concerned fabricator , along with their respective invoices to the effect that the components are blasted not in their works but else where .
- 8.11 Whenever galvanizing is to be done the charges for Galvanising and The allied To&Fro Transport charges are also payable extra as per the respective extra Rate Schedule. Whenever the galvanizing is done at Galvanizing source, who signed Annual Rate Contract **(ref. Section-VIII)** exclusively for galvanizing rate schedules, the charges for galvanizing will be directly paid to Galvanizing supplier against their Job Work order and respective invoices.
- 9.0 UT/RT/HT/SR:** The Ultrasonic Testing, Radiographic Testing, Heat Treatment and Stress Relieving as called for in the drawing/QWI,WPS/JWO are to be carried out by the fabricator, through the approved agency of BHEL. Approved agencies are as per **Section-VIII**. For Charges for carrying out of the above operation is payable extra as per the extra rate schedules and allied To and Fro Transport charges are also payable extra as per the respective extra Rate Schedules. In case there is no approved agency near vendor's works, vendor may locate suitable agency for RT, MPI, LPI, SR and UT and get them approved by BHEL before commencing the job. For such approval, the agency has to fill up relevant Vendor Registration Form available with BHEL.

10.0 EXTRA RATES FOR CONVERSION:

Rates for the special requirements like Special Painting, Heat Treatment, Transport Cost for Intermittent Operations etc. other than RS specified in this tender are to be finalized through Extra Rate Schedules in this tender. Totally 65 number of Extra RS involved ie. E 01 to E 98

Rates as per extra rate schedules shall be payable extra as per remarks in the IR. The extra Rate Schedules are applicable for all the contractors. The rate finalized for RS-NO. 185A for "Surface preparation equal to shot blasting " will also be operated under Extra Rate Schedule-E08.

Any other extra work not covered under extra RS, but incidental to the completion of fabrication job till handing over to BHEL, shall be deemed to be part of the main fabrication rates.

10.1 Blank

10.2 whenever substitution are offered which involves higher / lower work content, the charges shall be paid extra/ recovered as the case may be.

10.3 Blank

10.4 For all jobs wherever optional joints are mentioned in the drawing/cutting plan, no extra rates are permissible.

10.5 Blank

10.6 No extra rate is allowed for LPI. Rates as per extra rate schedules applicable shall be payable extra for Grit/ shot blasting, painting (all type of painting), HT & NDT charges (Other than LPI) etc.,

11.0 TRANSPORT CHARGES : Tender calls for the offers on F.O.R-Destination basis (ie. Freight charges inclusive in the quoted price), hence No Transport Charges payable extra for the Raw Materials / Components collected from BHEL and return of finished items vice-versa.

11.1 In case of transfer of raw material/semi-finished items from one vendor to another vendor, through IUWTV, the responsibility for collection of materials including the cost of transportation and handling etc.. shall rest with Second Vendor (fabrication vendor dispatching the finished goods).

11.2 No extra charges towards transport will be allowed for multiple collection & deliveries (due to various reasons including 1. Part-qty available for collection, 2. Part-qty required to be delivered by vendor.

11.3 **Additional Transport Charges:** Transport Charges incurred by the vendor for any special intermittent operations other than specified in the Rate Schedules or any additional movement requested by BHEL officials in writing, the transport charges payable extra as per the Extra Rate Schedules available in the contract.

11.4 Blank

11.5 The Rate payable against the Extra Rate Schedules are inclusive of Toll charges, if any.

- 12.0 Recovery of Transport Charges:** If the materials are delivered/collected by BHEL/BHEL approved transport contractor when the scope of transport is with vendor, the freight charges incurred by BHEL will be recovered from the vendors.
- 12.1 If Purchase Order is placed with delivery destination other than BHEL-Ranipet, the respective transport charges for delivering the finished job is to BHEL's Account and the amount of transport charges (already included in the rates finalized for the RS) for delivering to BHEL-Ranipet is deductible.
- 12.2 **Dispatch of finished goods Direct to Site (DTS):** Wherever necessary, BHEL may advise fabricators to dispatch finished goods directly to site with transport charges to BHEL's Account. The scope includes loading of finished products on truck for dispatch to respective BHEL-site offices/BHEL's-Customer. In such cases the cost of transportation from Contractor's works to BHEL,Ranipet, not incurred by the vendor shall be recovered from the vendors.

For all the above, the recovery of Transport Charges are as given in the following table.

SL	RS-NO	Destination Distance from Vendor Works	Amount of Deduction in Rs./MT
1	E07X	0-100 Kms	230
2	E07Y	Above 100 & up to 350 Kms	560
3	E07Z	Above 350 & up to 450 Kms	692

- 13.0 PAYMENT FOR EXTRA CHARGES :** 100% Payment will be made for extra charges against Invoice supported by acknowledged Delivery Chelan and Inspection Report (IR) issued by BHEL Inspector/agency.
- 14.0 SAFE DELIVERY:** The Contractor shall do at his cost the necessary packing for easy & safe handling and transportation as per BHEL drawing wherever specific packing arrangements are applicable and normal packing for the other items required for transit by rail/road transport wherever necessary.
- 15.0 TERMS OF DELIVERY:** The price should be on "F.O.R- BHEL Stores/Shipping, Ranipet" basis only (Inclusive of packing, forwarding and freight charges).

The finished machining / fabrications on acceptance by BHEL, Ranipet inspector or by their authorized inspection agency shall be delivered to BHEL, Ranipet Stores / Shipping or to BHEL Sites / Customer as the case may be immediately.

16.0 TECHNICAL REQUIREMENTS :

- 16.1 The machining / fabrications shall strictly confirm to the dimensions and tolerances indicated in the drawings/QWI,WPS. Care must be taken to adhere strictly to the NOTES given in the drawings/Contract. It should be ensured that actual dimensions, and deviations if any, are recorded properly in the D.R. books and preserved at least for 5 years. The same shall be made available to BHEL Officials or their authorized agencies.
- 16.2 Any other work carried out outside the requirements of drawings/QWI/WPS shall have the prior approval of the competent authority of Outsourcing / BHEL, Ranipet.
- 16.3 Adequate facilities like welding equipments, baking oven, handling facilities and measuring instruments as called for, must be available duly calibrated and kept with the Contractor for the manufacture of boiler components. All the above basic machining / fabrication facilities/equipments must be under working condition and the same be made available for verification by the BHEL officials or their authorized agencies whenever they are called for.

The instrument/gauges are to be calibrated periodically as follows:

Sl.No.	Type	Periodicity
01	Measuring instruments / gauges	One year
02	Limit Gauges (Eg. Plug/ring)	One year
03	Temperature , Pressure gauges	6 months
04	Measuring Steel tape	Once

Calibration status shall be displayed at the Contractors works in a conspicuous location. Calibration can be performed either at BHEL or at any Govt. approved labs traceable to National Standards.

- 16.4 For various Rate Schedules, the manufacturing, handling and testing facilities requirement as specified by BHEL from time to time shall be available with the Contractor.
- 16.5 Only the right kind of matching welding electrodes shall be used as called for in the drawings/QWI,WPSs after necessary baking and pre-heating mentioned in QWI,WPS. Welding electrodes shall be sourced only from approved vendors as per **Section-VIII**. The electrodes shall be suitably baked and preheated wherever applicable before use in addition to the general precautions that may be applicable for all electrodes in storing etc...
- 16.6 Welding to be carried out by Qualified Welders and as per BHEL Approved Welding Procedure Specification (WPS). Necessary raw material for conducting the pre-production test will be supplied by BHEL as supplementary materials. The welder qualification and welding procedure will be done by QC, BHEL or by their authorized agency.
- 16.7 All welds of Submerged Arc Welded components shall be carried out by certified welders and shall be dye-checked for root and by MPI for final welding.

17.0 INSPECTION:

- 17.1 Inspection of fabrications/Machinings (conversion work) shall be by BHEL Quality control department and/or by the customers and/or by an agency or persons authorized by BHEL, Ranipet at the Contractor's works including Self Inspection firms. Selected firms shall be approved by competent authority authorizing self inspection. The concerned Engineer/supervisor/Authorized Official of the firm authorized by the firm to carry out all Inspection activities and their authority/activities shall be on par with any other Inspection agency approved by BHEL (like TUV/IRS/INTERTEK etc.,). All facilities and equipments, calibrated instruments like tapes, thread checking gauges upto M20, and bore dial gauges and bits up to 100 mm. and standard gauges required for inspection shall be provided by the Contractor free of cost.
- 17.2 BHEL representatives/authorized agencies will have free access to the Contractor's works at any time during the execution of job work orders as well as for verification of requisite documents/materials. (The requirement of Customer approved quality plan will be indicated in the PO/Addenda).
- 17.3 The semi-finished components are deemed to have been accepted as ready for delivery only after IR is released by the Inspecting Agency.
- 17.4 Statutory inspection requirements such as IBR/External Inspection agency requirements if any, are to be met by the Contractor.

17.5 The paint quality will be checked by BHEL Ranipet at regular intervals. Samples will be collected from vendor works and will be tested at BHEL to ensure quality as per relevant standards. In case of discrepancy in meeting our specification the job may be rejected/vendor may be put under suspension of business

18.0 PAYMENTS :

- 18.1 Payment will be made for IP wise 100% for the supplies made against submission of Vendor invoices in duplicate to Finance section furnishing the job work order Sl. No., W.O., IR & DC No. along with IR, giving details of work carried out as per Extra Rate Schedule applicable, if any supported by
- (a) Stores Receipt Voucher in case of Stock Work Order items.
 - (b) Delivery challan acknowledged by BHEL Stores/Shipping.
 - (c) Inspection Report (IR)
 - (d) If the claim is made for more than one job work order Sl. No., only one invoice have to be submitted with annexure giving the above details.
 - (e) Contractor MAS with challans duly signed with seal in part II.
 - (f) Finished goods are dispatched directly to site (DTS) from fabricators works as per BHEL instructions, necessary formalities to be followed as per BHEL conditions stipulated from time to time . Also in such DTS cases, the documents like copy of DC, Lorry Way Bill etc shall be submitted along with their invoices for payment purposes.
- 18.2 The amount due to BHEL, Ranipet, if any, will also be recovered from the Contractor's running bills. No request for the refund of penalty/recovery will be entertained after final material accounting is done. Payment will be made only through 'Electronic Fund transfer/RTGS Transfer'. Acceptance for the same may be submitted in the prescribed format if not done already.
- 18.3 Owing to the substitution, if the raw material weight changes over and above (+) or (-) 5%, the conversion cost for the difference in weight shall be paid/recovered prior to the issue of FMAS. Since payment is made for notional design weight, any correction issued for the design weight after processing the original invoice, Contractor is entitled to raise another invoice for the difference in weight without any other supporting document except the copy of the original invoice.
- 18.4 Payment will be restricted to two bills per Work Order or Job Work Order Sl. No. only. Excise Duty as applicable for Contractor's covered under **clause 28.0**. can be claimed along with documents / certificates mentioned therein. However, one more bill per month against any one of the pending Work Orders will also be permitted as a special case and this should have the prior approval by competent authority.
- 18.5 The Contractor shall ensure that ALL claims including extra charges, if any, are made against the particular work order before the issue of Final-MAS since BHEL will not be able to reopen the case after issue of Final-MAS.
- 18.6 The payment shall be subject to the deduction of any amount for which the fabricator is liable indirectly under this contract or any other contract of the fabricator or any other fabricator's contract where the proprietor / any of the partners / directors of the present fabricator is / are proprietor/director/s/partner/s, in respect of which BHEL / Ranipet is a contractee.
- 18.7 Request for delivery extension is to be made if there is a valid reason, in the format for that particular job work order Sl. No., failing which liquidated damages will automatically be levied as per **Cl. 23.0**. No request for extension/refund of penalty will be entertained there after.

- 18.8 Payment will be made in about 45 days after receipt of valid invoices raised in accordance with **Cl. 18.1** and supported by full set of necessary documents at Accounts Department. No interest shall be payable by BHEL on any money due to the Contractor by BHEL.
- 18.9 For the purpose of payment, only the unit rates are to be considered based on the RATE SCHEDULE NUMBERS. The description of the item is only indicative and it is not binding. Any description given in the item column is only for the purpose of clarity for manufacturing the item. (the description may change designer to designer and/or drawing to drawing).

19.0 PROGRESS REPORT:

The Contractor shall submit progress report from time to time and also discuss with our officials concerning the progress of the work and commitment as may be required by BHEL, Ranipet. The submission, receipt and acceptance of such reports shall not prejudice the rights of BHEL, Ranipet under the Contract nor shall operate as an estoppel against BHEL, Ranipet merely by reason of the fact that they have not taken notice of/or objected to any information contained in such reports. Action as deemed fit will be taken if the progress of the work is not satisfactory.

20.0 BANK GUARANTEE :

- 20.1 The Contractor in MAIN or TINY shall execute a Bank Guarantee to a specified value not less than Rs.10.00 Lakh from any one of the Scheduled or Nationalized banks on behalf of the Contractor for the safe custody of the materials supplied by the BHEL, Ranipet as free issue and for the satisfactory performance of the Contracts. The guarantee shall be executed on a non-judicial stamp paper or value Rs. 100/- as per our standard Bank Guarantee clauses and shall be kept valid for the full contract period & Claim period of additional THREE MONTHS over the contract period and extensible till final settlement of supply and payment **and BG to be submitted directly by Bankers to BHEL in a Standard format as per Section XII. BG format will be given by BHEL and it has to be filled in that format only.**
- 20.2 In place of Bank guarantee, Fixed Deposit Receipt (FDR) drawn in favour of BHEL, Ranipet can also be furnished. In any case BG/FDR shall be available at the time of signing the contract.
- 20.3 The Bank Guarantee should cover the recoveries to be made by BHEL towards Safe custody of Material Supplied, Scrap / Faulty workmanship, etc. also for which proper material accounting is not made within the stipulated time and shall cover all Contracts past, present and future placed / to be placed by the BHEL, Ranipet. If the recovery amount is more than the pending bills, the difference amount to be settled immediately submitting Demand Draft in favour of BHEL/ Ranipet.
- 20.4 Loading on the vendor shall be restricted in such a way that the value of the materials to be issued and the stock of BHEL materials already available with the vendor.

21.0 BANK GUARANTEE NORMS ;

- 21.1 Necessary Bank Guarantee(BG) / Fixed Deposit Receipt(FDR) should be furnished. The Bank Guarantee value applicable for the Firm is indicated in **Section XII** enclosed. The BG shall be kept **valid through out the contract period PLUS 3 Months as claim period** and must be renewed in-time. It is also to be noted that the BG for the value indicated shall be made available with BHEL at the time of entering into ARC, failing which Firm will not be considered for entering in to contract with BHEL.

The required Bank Guarantee shall be submitted with in 15 Days of finalization of the contract, else the non submission of BG will be treated as " *not honoring his own offer or any of the condition* " stated/agreed in the tender and declared fit for taking penal action by BHEL as per "*Suspension of Business dealings vide Clause S of section IV*"

- 21.2 The release of Contract by BHEL, Ranipet shall be on the strength of Bank Guarantee for the safe custody of raw materials issued by BHEL, Ranipet as free issue in line with **CL. 20.1.**
- 21.3 Based on the capacity declared by the firm, the Sub-contractor may decide the maximum BG value over the base BG value, and the same shall be submitted to BHEL before ordering.
- 21.4 **BG shall be given by bidders for 50% of value of materials** to be issued to the vendor against Job Work Order. The value of materials shall be as per BHEL calculation, which is final.
- 21.5 JWO / Loading on the vendor shall be restricted in such a way that the value of the materials to be issued and the stock of BHEL materials already available with the vendor, together does not exceed twice the value of BG at any point of time.
- 21.6 BHEL reserves the right to increase the value of BG/FDR depending on the material availability with the contractors from time to time. For placement of PO/addendum, if available BG is short of the required BG value, the same will be intimated to the vendor to submit additional BG. The vendor shall arrange for the required BG within 15 days from the date of receiving such intimation from BHEL. If the vendor does not submit the required BG within 15 days, then the loading quantity may be reduced / diverted to other firms. After completion of that particular order, the vendors can request for return of BG (other than base BG) and the same shall be considered by BHEL.
- 21.7 The base BG shall be returned by BHEL after 90 days from the date of final bill submission or ARC validity period whichever is later.

22.0 GUARANTEE OF FABRICATION / MACHINING :

The Contractor shall warrant that the conversion work comply fully with the drawings and other technical conditions. If the jobs are found defective owing to reasons attributable to the vendors like faulty workmanship / incomplete work within a period of eighteen months from the date of handing over to BHEL, the Contractor shall make good of it / replace the same free of cost. Alternatively, the rework / replacement charges will be recovered from the Contractor.

23.0 LIQUIDATED DAMAGES and RISK PURCHASE:

- 23.1 The semi-finished jobs/fabrications on acceptance by BHEL, Ranipet inspector or by their authorized inspection agency, shall have to be delivered to BHEL, Ranipet Stores / Finishing Bay immediately on or before the delivery date stipulated in the addendum. Where the Contractor supplied the finished machining / fabrications beyond the delivery date stipulated in the addendum, liquidated damages at the rate of **1/2%** of the value (Conversion Cost) of the assemblies delayed for each week or part thereof will be levied subject to a maximum of **10%** value of the particular Work Order in the addendum to the Contract without prejudice to any other relief or compensation to the BHEL, Ranipet under any other conditions of the Contract.
- 23.2 Further, BHEL, Ranipet will get these items fabricated elsewhere, without notice to the Contractor on the account and at the cost and risk of the Contractor, the jobs not so delivered without canceling the Contract in respect of installments of machining / fabrications not yet due for delivery or cancel the Contract or a portion thereof and, if so desired, fabricate elsewhere at the cost and risk and account of the Contractor. Any additional expenditure incurred by BHEL on this account shall be recovered from the Contractor.
- 23.3 In general, delivery period for each JWO shall be 3 Months from JWO Date/Last material clearance date including further materials, whichever is later. However actual delivery shall be fixed by BHEL for each JWO on project requirement and product lead time.

23.4 Where delivery extension is sought with waiver of penalty, the same should be applied to OS with justification and approval to be obtained before delivery to BHEL Stores/Shipping and two copies of such letters (One for Accounts & One for OS Department) are to be enclosed along with all the bills. Failure to comply with this requirement will result in recovery of penalty while processing the bills for payment as stated in **Cl. 23.1** from the same bill and no claims for refund of liquidated damages will be entertained there after.

23.5 Reasons like power cut, Labour Issue, Machine Break-down etc., which are controllable by the vendors shall not be accepted as reasons for delay for delivery extension purposes. No compensation shall be given to the Contractors, in case of cancellation/diversion of PO'S beyond the delivery Due Date, even if the Jobs have been processed partly.

24.0 ACTION AND COMPENSATION IN CASE OF BAD WORKMANSHIP:

If any work has been executed with unsound, imperfect or bad workmanship or with materials of inferior quality, the Contractor shall on demand in writing from BHEL specifying the work, material/articles complained of, notwithstanding that the same may have been passed, certified and paid for, forthwith, rectify the work so specified in whole or in part as the case may require, at their own cost and in the event of his failure to do so within reasonable period. BHEL will rectify or remove and re-execute the work at the risk and expense of the Contractor.

25.0 COMPENSATION AGAINST DAMAGE OF MACHINERY/TOOLS AND GAUGES SUPPLIED:

25.1 BHEL reserves the right to claim adequate compensation from the Contractor on account of any damage caused to the machinery / equipment / tools and gauges supplied to them for execution of work, due to careless or faulty handling or negligence on the part of the Contractor. The total cost of recovery will be decided by BHEL.

25.2 BHEL shall have general supervision and direction over the work, BHEL has the authority to stop the work, whenever such stoppage may be necessary to ensure the proper execution of the Contract. BHEL shall also have the authority to reject all the works which do not conform to the specification, to direct the application of forces to any portion of the work as, in their judgment is required, and order the force increase or decrease and to decide on the issues which arise in the execution of the work.

25.3 BHEL reserves the right to suspend the work or part thereof put a hold on further loading to the Contractor at any time for any reason at its discretion and no claim whatsoever on this account will be entertained.

26.0 SUBLETTING :

26.1 The Contractor shall not sublet or assign this Contract or any part thereof without the written permission of BHEL, RANIPET. Subletting or assigning this Contract or any part thereof without such permission BHEL, Ranipet shall be entitled to cancel the Contract and to execute the conversion work elsewhere at the risk and cost of the Contractor and the Contractor shall be liable for any loss or damage which BHEL, Ranipet may sustain in consequence of or arising out of such machining / fabrication elsewhere and also cancellation of registration/temporary suspension of further loading.

26.2 However, if the PO/PGMA loading demands part processing / Special Process (like Heat Treatment, Machining, Bending, Shearing, Threading, etc..) of certain items at, other BHEL OS-approved Contractor's works, the same may be allowed with the prior permission of BHEL in writing, indicating the period of returning.

26.3 "Movement of BHEL materials from our Contractor's premises to any other Firm(s), if necessary, for the purpose of production related work shall be documented properly, signed by the sender & receiver and the same to be authenticated by the concerned OS official, otherwise such materials will be treated as shortage by Accounts".

- 26.4 The vendors will be allowed to indicate alternate sources for carrying out these intermediate operation, wherein the said other sources shall seek approval from BHEL for carrying out these operations.
- 26.5 These intermediate operations are to be carried out only at the approved sources and addition/deletion to this list will be indicated to the vendors then and there.

27.0 TAXES AND DUTIES:

- 27.1 Works Contract VAT exemption certificate as per Form 'S' under section 13 (1)(C) of TN VAT Act as amended from time to time is to be obtained from Commercial Tax Officer by Contractors and submitted to BHEL, failing which appropriate Work Contract VAT will be recovered from the running bills of the Contractor.
- 27.2 In respect of fabrication contracts, as the Contractor is fabricating the material issued by BHEL and the fabricated component is painted by the subcontractor, works contract TDS will be recovered on the value of the works contract @ 5% or as applicable under TN VAT act. Fabricator has to provide TIN number to enable BHEL to deduct and remit the applicable Works contract TDS. BHEL will issue form "T"(Works contract TDS certificate) periodically. Alternatively Contractor can submit Form "S" received from assessing officer, Commercial Taxes, of the respective circle for non-deduction of Works contract TDS by BHEL.
- 27.3 Taxes applicable if any will be reimbursed at actual on submission of necessary tax invoice mentioning the TIN/ registration number and proof of payment to the statutory authorities.
- 27.4 BHEL will recover applicable Excise Duty and VAT along with cost of prime material, off cut, scrap including Turning & Boring (T and B) as per clause 5.1 at the time of finalizing MAS wherever the property in the goods passed on to the Contractor. An Invoice will be issued under relevant rules of Excise and VAT.
- 27.5 BHEL will reimburse applicable VAT @ 5%/14.50% (or as applicable under TNVAT Act) for painting schedule against ORIGINAL TAX INVOICE as per TN VAT Rules and a Certificate of Payment as given below:-

"We certify that TN VAT of Rs._____._____ charged in our Invoice No_____ dt _____ has been paid to the Credit of Commercial Tax Officer _____Circle , Govt. of Tamilnadu on_____:-"

- 27.6 Fabrication of components of ESP, APH, Fans, Gates and Dampers etc. amount to manufacturing activity and hence service tax is not applicable under Negative list (Section 66D (f)). If Fabrication along with Sand Blasting and Painting are carried out by a single fabricator, it will amount to manufacturing activity and no service tax is applicable under Negative list (Section 66D (f)).

27.7 Where the process carried out by the Contractor does not amount to manufacture as per Central Excise Act, 1944, service tax is applicable as given below:-

- 27.7.1 In respect of the processes where there is no transfer of Property in goods for eg: Sand Blasting, Heat treatment, Nitriding etc. carried out separately by a Contractor, the entire service tax has to be paid by Contractor.
- 27.7.2 In respect of the processes where there is transfer of Property in goods for eg. Painting, galvanizing, chrome plating, etc. carried out separately by a Contractor, it is treated as Works contract service and Contractor is charging VAT on 70% of contract price, service tax is applicable for the balance portion of 30% of contract price which is to be paid by fabricator @ 50% and balance 50% will be paid by BHEL as receiver of service, if the subcontractor is individual, HUF, Partnership Firm, Association of persons. In case of Limited Companies (Public or Private) 100% service tax is to be paid by Contractor.

- 27.7.3 Provided where the Paint is issued by BHEL 100% of service tax is to be paid by Fabricator on painting charges.
- 27.7.4 In respect of projects where excise duty paid by BHEL, Contractor is exempt from payment of service tax for these projects under Notification 25/2012 ST dt 20.6.2012 sl No 30 (c)
- 27.7.5 In case of Small service providers where the annual total service value is up to Rs 10 lakh, service tax is exempted under Notification 33/2012 ST dt 20.06.2012 as amended from time to time.
- 27.7.6 Wherever service tax is claimed by Contractor as above BHEL shall reimburse the applicable service tax @ 14% presently against submission of the following documents:-
- i. Service Tax Registration Certificate (Self attested copy)
 - ii. Original Service Tax Invoice (as per Service Tax Rules)
 - iii. Certificate for payment of Service Tax
 - iv. Service Tax challan (Self attested Copy)
- 27.8 For Transport Charges under extra rate schedule number **E17 SERIES**, the entry tax if any will be to Contractors account as the same is available as Input Tax Credit. This rate is inclusive of service tax on transportation.
- 27.9 Income Tax deduction and surcharge on IT at source at such percentage as prescribed in the Income Tax Act from time to time will be made on the value of the invoices in the absence of Income Tax Exemption Certificate from the concerned Income Tax Officer received and submitted by the Contractor. Contractor has to submit photocopy of PAN Card along with original for verification.
- 27.10 All statutory documents required for execution of contract to be finalized against this enquiry and required from time to time by State/central Govt. Authorities shall be submitted to BHEL, failing which appropriate recovery/actions as deemed fit will be levied from the running bills of the contractor.

28.0 EXCISE DUTY:

(A) CONTRACTORS WHO USE BHEL MATERIAL FREE OF COST AND FINISHED COMPONENTS RETURNED TO BHEL STORES OR DESPATCHED DIRECTLY TO CUSTOMER SITE:

- (i) Contractors are exempted from payment of excise duty as they are job workers under Government of India Notification No.214/86 CE dt.25.3.86 as amended from time to time for the purpose of free issue of raw materials/semi finished goods to them for carrying out necessary operation and return the finished components without payment of duty to the BHEL RANIPET's factory for further processing. They are bound to comply with the requirements of the said notification. This is subject to subsequent statutory modifications and amendments in force from time to time. Contractors shall comply with the requirements of the said Notification. This is subject to subsequent statutory modifications and amendments in force from time to time. Besides, Taxes, duties, levies and any other govt. special levies as applicable from time to time, through notifications/amendments to original notification/orders, during the tenure of the rate contract, shall be extra as applicable against valid documentary evidence. Any increase or decrease in this regard will be effected accordingly against valid documentary evidence.

- (ii) The required raw materials will be issued under the cover of Cenvat Credit Rule (CCR) 4 (5)(a) and / or Notification 214/86 Challans. The Contractor receiving the materials under CCR 4 (5)(a) and / or Notification 214/86 Excise Challan have to complete the work order and return the finished components and scrap within 3 months from the date of first issue of materials unless otherwise extended by BHEL and all materials shall be fully accounted for in FMAS. For this purpose Duplicate (Green) copy of all the Excise Challan shall be returned back to BHEL after duly signing in PART II with seal with FMAS and DC copy. If the materials are not returned/ fully accounted for within three months or such extended period as may be allowed by BHEL, any Loss of CENVAT credit to BHEL will be recovered from the Contractor's bills.
- (iii) In case of failure of non submission of challan due to reasons not attributable to Contractor, (like non matching of materials, hold informed by BHEL, delay due to cycle time etc.,) is to be intimated to BHEL every month by the Contractor.
- (iv) Incase of direct dispatch to customer site after approval by Asst Commissioner of Central Excise, necessary Excise formalities have to be complied with by Contractor. Necessary records as per Central Excise rules have to be maintained by the Contractor.
- (v) FMAS is to be prepared immediately on dispatch in all cases based on which applicable Duty/VAT on scrap/Off cut will be recovered from Contractor and paid to Excise Dept.

(B) Blank

(C) Blank

29.0 GENERAL :

- (a) BHEL reserves the right to recover the dues if any, from the contractor from any one of the running bills of this contract or any other contract with the contractor or from any other division of BHEL. Vendors disqualify themselves to be an approved vendor of BHEL, in the event , it is found that they carryout activities / business which are in direct competition to BHEL business and accordingly they will be delisted. Vendors / Firms indulging in business practices detrimental to BHEL, will be severely dealt with by the due process of law. In addition to the above conditions the following specific conditions also bound under this contract.
- (b) It is preferred that the Proprietor/Managing Partner/Director as applicable to the company should be easily accessible to BHEL official for day to day interaction and to have the residence within 30 KM from BHEL/BAP for the firms located in and around Ranipet. Any change in the constitution of the Contractor's unit or in shifting of works to a new location, the same shall be made only after getting specific approval from Outsourcing BHEL RANIPET. Any deviation found later will be dealt with as deemed fit including cancellation of registration. Also change of Banker requires the prior approval of BHEL, Ranipet.
- (c) Partnership firms should have the latest Form A (Rule 5) Declaration filed with the Registrar of Firms and private Limited firms should have the current MOA and the copy of the same should be produced at the time of signing the Contract.
- (d) The Contractor is liable for all statutory obligations, including but not limited to taxes and duties, ESI, PF, ED/ST, Labour Acts, Factories Acts, Workmen Compensation Act, etc., for their workers. BHEL, RANIPET will have no liability in respect thereof. Notwithstanding the above, if any demand notice is served by the concerned Statutory authorities for recovery of any of their dues on BHEL, BHEL shall have the right to pay the same without notice to the Contractor and recover the same plus administrative charges of 15% of such amount from the Contractor either from the pending/future bills of the Contractor or otherwise. Such act of repeated default is liable for suspension/stoppage of further business till such time the default/violations get vacated. Notwithstanding anything to the contrary, BHEL shall not be liable for any penalty or interest imposed by any statutory authority due to the action of the Contractor or his employees, workers, agents, etc.

- (e) The Contractor has to devise suitable scheme whereby the employment of child labour should be regulated in line with the child Labour Act (prohibition and Employment Act 1986).
- (f) All the safety precautions and use of safety equipments are to be followed while carrying out the fabrication and despatch of the same. The Contractor must have proper tools and handling equipments. There should always be a responsible person available at the Contractor's works to oversee the operation and compliance of safety regulations. If any non-compliance with respect to proper safety conditions/requirements, BHEL may withhold visit/inspection, instruct stoppage of work till such time the desired safety requirements/conditions are met with.
- (g) All the documents (Inclusive of Drawings, GMS and Standards) of BHEL made available to the Contractor should be kept in a strict confidence and under no circumstance be made available to others or allow others to make use of them for any other commercial purpose whatsoever. This secrecy clause is binding on the employees of the Contractors also. Any contravention will be subjected to legal action besides suspending business with BHEL. Such documents should be returned to the BHEL, RANIPET destroyed with the prior approval of Outsourcing, BHEL, RANIPET.
- (h) Unauthorized act of engagement of any individual who is a full time employee of BHEL for part time/full time work by the Contractor will be viewed very seriously and such act is liable for suspension/total stoppage of further business dealings with the Contractor by BHEL, RANIPET.
- (i) Should a Contractor has a relation or relations in the case of a firm or a company of the Contractor, one or more of its shareholders or relation or relations of the shareholders employed in BHEL or any ex employee who has retired/resigned within a period of two years as on date of the Contract or at any subsequent date after award of this contract, BHEL shall be informed of the fact at the time of signing the contract and thereafter as applicable and obtain the permission of BHEL for such engagement, failing which BHEL may in its own discretion rescind the contract.
- (j) The Contractor shall not attempt any unethical acts and if they are found indulging in such acts, they are liable to be blacklisted apart from other actions. Contractors indulging in any business practices detrimental to BHEL either directly or Indirectly, will be dealt with severely by the due process of law.
- (k) In case of any internal dispute of the Contractor, such as but not limited to disputes between partners of the Contractor, dispute between Contractor and its employees, the same shall be intimated to BHEL within One Month from the date of dispute. Notwithstanding anything to the contrary, BHEL shall not be made a party any suit or legal proceeding in respect of such internal dispute. In case BHEL is made a party to the same, the Contractor and other party(ies) to the dispute, if signatories to this Agreement, shall indemnify BHEL for (a) all direct and indirect costs expended towards such legal proceedings immediately on the issue of a claim notice to that effect from BHEL and (b) any liability that may be imposed in such legal proceedings against BHEL.
- (l) Payment for all the invoices shall be effected by a crossed A/C payee cheque /EFT/RTGS in favor of the Banker which should be indicated in all invoices of the Contractor.
- (m) In order to ensure safe custody of our materials, leasee of those firms under lease shall ensure that their lease period is valid for minimum of 3 years (from date of signing the contract).
- (n) In addition to the above, our standard General Conditions enclosed shall also apply.
- (o) The entire terms and Conditions contained in this tender shall be deemed to form an integral part of the Contract to be entered.

30.0 BHEL reserves the right to :

- (a) Negotiate with the Contractor who has submitted the Lowest offer for "Payment Rate Schedules" and Highest offer for "Recovery Rate Schedules"
- (b) Distribute the requirements on more than one contractor at the Lowest (for Payment RS) / Highest (for Recovery RS) acceptable rate.
- (c) The rates and other terms and conditions in this contract are applicable for the job work orders likely to be placed by other Departments/Units of BHEL also, for similar items.

31.0 Primary e-Mail-ID: Contractors are requested to indicate their own email-Id as "Primary e-Mail-ID", which will only be used for all correspondences (like for MAS and Payment etc..)

32.0 Blank

33.0 Arbitration and Jurisdiction:

- (a) Any dispute between BHEL and the Contractor arising out of or in connection with this Contract, other than those for which BHEL decision is final, shall be referred to arbitration by a sole arbitrator.
- (b) The parties hereto agree that the Sole Arbitrator shall be the Unit Head of BHEL, BAP, Ranipet or his nominee. The venue of Arbitration shall be Ranipet, Tamil Nadu. The arbitrator may hold meetings for convenience at such places as per his discretion.
- (c) The award of the Arbitrator shall be final, conclusive and binding on both parties to the Contract.
- (d) Subject to the above, the courts at Ranipet alone have the jurisdiction to decide any dispute arising out of or in respect of the Contract.

Vendors are requested to quote only for the Rate Schedules/Group of Rate Schedules applicable to their firm as per the Technical Bid (**Annexure-C1**) and Price Bid format (**ANNEXURE-D1**) enclosed.

The offers should be submitted as detailed in **Section I to Section XII and Annexures A to L**

BHEL, Ranipet is not responsible for any type of delay in receipt of tender.


BHEL, Ranipet reserves the right to reject any or all the tenders either in full or part thereof at their discretion without assigning any reason thereof.

Thanking you,

Yours truly,

For and on behalf of
BHARAT HEAVY ELECTRICALS LIMITED,

SENIOR MANAGER (CONTRACTS) / OS

	Bharat Heavy Electricals Limited (A Government of India Undertaking)		☎: 04172-284030, 284158, 241170
	Boiler Auxiliaries Plant, Ranipet – 632 406		
AN ISO 9000 COMPANY	OUTSOURCING DEPARTMENT		E-Mail : tenderoutsourcing@bhelrpt.co.in
Enquiry No	654015E	Due Date & Time for submission of offers	Prior to 14.00 Hrs. on 26.05.2016
Enq-Dated	26.04.2016	Date & Time of Tender opening	By 14.30 Hrs. on 26.05.2016
<u>SECTION III</u>			
Technical Description and Rate Schedules Classification for Annual Rate Contract - 2016-17 for OS-MAIN for Complete Manufacture of Aluminium Casing Supports			

Sealed Tenders are hereby invited from experienced Contractors to finalise the Rates for entering into Annual Rate Contract for the year 2016-17 for Complete Manufacture of Aluminium Casing Supports in accordance with the Technical Specification/BHEL Engineering Drawings/Quality Documents out of Raw Materials/Components to be supplied by BHEL, Ranipet as free issue.

1.0 The Total Tonnage tentatively for this Rate Contract is for Aluminium Casing Support is 165 MT.

The requirements are given in the form of Rate Schedules (RS). Each Rate Schedule contains Rate Schedule Number, Description of the scope of operation to be carried out Unit and Quantity Anticipated in 2016-17 for ordering.

2.0 Rate Schedules: Total Rate schedules given in the tender are 3 as detailed below.

Sl.No	RS.No	Description	Unit	Qty
2	109A	Aluminum Casing Supports to sample Drawing. 6160 0141/05/01 L upto 650 mm Raw materials of Aluminium in the form of Coils thick 1.0mm x width 900 to 1250mm weighing each 3 tons approximately will be issued. Unit weight 0.119 Kg	NO	1200000
3	109B	Aluminum Casing Supports to sample Drawing. 6160 0141/05/03 L above 650 mm. Raw materials of Aluminium in the form of Coils thick 1.0mm x width 900 to 1250mm weighing each 3 tons approximately will be issued. Unit weight 0.145 Kg	NO	150000

3.0 Scope of the Operation : Complete Manufacture as per Drawing. The Rate Schedule contains descriptive details of items only. However, during actual release of orders, specific Drawing will be given for manufacturing. The detailed scope for each item is as follows.

Aluminium Casing Support: Complete manufacture of Aluminium casing supports as per sample drawing 6160-0141/05/01 and 6160-0141/05/03, from BHEL supplied raw-materials.

Raw materials of Aluminium in the form of Coils thick 1.0mm x width 900 to 1250mm weighing each 3 Tons approximately will be issued.

Finished items shall be packed in small bundles of each 100 nos tied with nylon strips, with tag indicating the WO, Qty, Matl code etc., and 25 such bundles in one pack wholly binded and clipped with sufficient nylon strips facilitating the lifting of the whole bundle indicating the bundle Qty and Wt.

Inspection by BHEL's customer/BHEL/BHEL agency.

Single/multiple Collection of raw-materials from BHEL/Stores/Ranipet and single/multiple delivery of finished items to BHEL/Stores/Ranipet is vendors scope for which NO extra charges are payable.

4.0 Extra Rate Schedules: Extra works if any carried out as per drawing / QWI / JWO /WPS requirement shall qualify for extra payment, as per extra rate schedules listed in **Section IIIA**. There are 65 Rate Schedules available in Extra Category operation.

5.0 Recovery Rate Schedules: The Rate Schedules E41, E42, E43 and E73 are the recovery Rate Schedules and the same will be applicable wherever recovery involves.

6.0 Mandatory and General Facilities Required : To carry out the operations required on the job for the concerned Rate Schedules, the manufacturing Facilities required like Hydraulic/Mechanical Press, Shearing Machines, Measuring Instruments etc. are mentioned in **Annexure-FR** (for Aluminium casing).

7.0 Eligibility of Vendors : The vendors who are all having the Facilities required, mentioned **Annexure-FR** and sufficient experience in the manufacturing field can quote for the respective Rate Schedules.

8.0 Distance Eligibility Criteria- Vendors Location: Vendors located within the radius of 350 KM from BHEL, Ranipet are only eligible to quote for this tender.

9.0 Quantity : Tentative annual requirement is mentioned against each Rate Schedules in the Tender- **Technical Bid as Annexure – C1**. This quantity may vary during the currency of the contract according to the receipt of orders by BHEL.

10.0 Technical Bid : Technical specification Document for each Rate Schedules are available as Technical Bid as **Annexure – C1**. Vendors can download the concerned Rate Schedules Format which is matching with the Facilities available with them and fill the details as requested.

11.0 Price Bid : Price Bid Documents for each Rate Schedules are available as **Annexure – D1**. Simultaneously Vendor has to download the Price Bid Format along with Technical Bid Document for the concerned Rate Schedules willing to quote and fill the same.

Note: Unit rate only to be mentioned in the price bid. Any Rates indicated other than in Price Bid Cover III shall not be considered.

12.0 Drawings : Each Rate Schedule relates to a group of drawings / PGMAs consisting of similar nature and content of work. The drawings are hosted in the Web-Site. Vendors can view the original Drawings at OS department also.

13.0 Quality Documents: Relevant Quality Work Instructions (QWI), Procedure of Quality Assurance (PR:QA), Welding Procedure Specification (WPS) specified in the Rate Schedules / Drawings are given in **Section IX**. Vendors can view the documents at OS department also.

Care: Offers received other than the format hosted in the web site will be summarily rejected. Vendor has to study carefully all the technical requirements before quoting for the selected Rate Schedules.

List of Extra Rate Schedules

RSNO	RS DESCRIPTION	RATE IN RS	UNIT
E01	CONVERSION CHARGES FOR FLAT OUT OF PLATES .	800.00	MT
E03	MAGNETIC PARTICLE INSPECTION/TESTING [MPI].	60.00	MR
E04	RADIOGRAPHY [RT]	750.00	MR
E07X	DEDUCTION OF TRANSPORT CHAGES FOR DTS 0 TO 100 KMS	230.00	MT
E07Y	DEDUCTION OF TRANSPORT CHAGES FOR DTS 101 TO 350 KMS	560.00	MT
E07Z	DEDUCTION OF TRANSPORT CHAGES FOR DTS 351 TO 450	692.00	MT
E08	SURFACE PREPARATION EQUAL TO SHOT BLASTING.	61.50	SM
E11	25 MIC OF EPOXYZINC RICH PRIMER [EXCEPT WM XXX]	82.00	SM
E13	25 MIC OF EPOXY ZINC PHOSPHATE PRIMER	60.00	SM
E14	40 MIC OF WHITE ENAMEL PAINT	45.50	SM
E16	25 MIC OF HEAT RESISTANT BLACK BITUMINOUS PAINT TO IS-158	20.00	SM
E17A	Transport charges for To and Fro Movement of semi-finished components from YOUR WORKS to the WORKS OF CONTRACTOR situated WITH IN 60 Kms from YOUR WORKS doing the intermittent operation such as Galvanizing/blast cleaning/Balancing/Heat-treatment/other specific operation etc as per Enquiry.	475.00	MT
E17B	Transport charges for To and Fro Movement of semi-finished components from YOUR WORKS to the WORKS OF CONTRACTOR situated between 61 Kms and 160 Kms from YOUR WORKS doing the intermittent operation such as Galvanizing/blast cleaning/Balancing/Heat-treatment/other specific operation etc as per Enquiry	1192.00	MT
E17C	Transport charges for To and Fro Movement of semi-finished components from YOUR WORKS to the WORKS OF CONTRACTOR situated between 161 Kms and 350 Kms from YOUR WORKS doing the intermittent operation such as Galvanizing/blast cleaning/Balancing/Heat-treatment/other specific operation as per Enquiry	2000.00	MT
E18	40 MIC OF HIGH BUILD CHLORINATED RUBBER ZINCPHOSPHATE PRIMER.	90.00	SM
E19	5 MIC OF ETCH PRIMER/WASH PRIMER	50.00	SM
E20	20 MIC OF SYNTHETIC ENAMEL LONG OIL ALKYD TOIS-2932 [SMOKE GREY]	26.00	SM
E23	25 MIC RED OXIDE ZINC CHROME PRIMER TO IS 2074/RUST PREVENTIVE OIL.	9.00	SM
E24	20 MIC BLACK ENAMEL PAINT TO IS - 2932	26.00	SM
E27	50 MIC HIGH BUILD EPOXY PAINT DARK GREY.	90.00	SM
E28	30 MIC EPOXY FINISH PAINT LIGHT GREY	70.00	SM
E29	75 MIC INORGANIC ZINC SILICATE PRIMER	70.00	SM
E30	30 MIC CHLOROKOTE ZINC PHOSPHATE TO IS 8632.	75.00	SM
E40	TRIAL ASSY OF TOTAL INLET/OUTLET FUNNEL ASSY[PYRAMID SHAPE] COLUMNS, LONGITUDINAL ROOF BEAMS, TRUSSES (X55), SPIRAL CASINGS, TURBINE HALL STRUCTURES, DUCTS ,SILENCERS (ASSEMBLED FROM MULTIPLE BLOCKS), BRACKETS IN X25, SUCTION HOOD OF FANS AND ROOF ASSEMBLY OF FANS ETC.	675.00	MT
E41	RECOVERY RATE FOR CS/AS, ASBESTOS , WOOL , CAF SCRAP ETC.	19000.00	MT
E42	BIG SIZE SCRAP [CS/AS SHEETS/ PLATES]	23500.00	MT
E43	RECOVERY RATE FOR STAINLESS STEEL [NON-MAGNETIC], NON-FERROUS METAL SCRAP.	95000.00	MT
E44	Recovery Rate for Turnings and Borings scrap of CS/AS	15900.00	MT
E45	Recovery Rate for Turnings and Borings scrap of SS Non magnetic Non Ferrous	41590.00	MT
E46	Recovery Rate for Turnings and Borings Scrap of Stainless Steel- Magnetic	25000.00	MT
E51	HR ALUMINIUM PAINT [20 MIC] [UP TO 200 DEGREEEC] IS 13183 / 1991 GRADE - III	26.00	SM
E52	HR ALUMINIUM PAINT [20 MIC] [ABOVE 200 DEGREEEC] C]IS 13183 / 1991 GRADE - II	60.00	SM

List of Extra Rate Schedules

RSNO	RS DESCRIPTION	RATE IN RS	UNIT
E54	HR CHIMNEY BLACK PAINT (>250 DEGREE C) / FERROTOL BLACK CHIMNEY [50 MIC]	48.00	SM
E55	EPOXY HB MIO INTERCOAT [125 MIC]	55.00	SM
E56	ALIPHATIC PU FINISH OR EQVT. [75 MIC]	130.00	SM
E57	CHLORINATED RUBBER FINISH PAINT DARK GREY [40 MIC]	74.00	SM
E59	ETHYL ZINC SILICATE/ZINC DUST ETHYL SILICATE[75 MIC]	62.00	SM
E60	HB EPOXY ZINC RICH PRIMER [50 MIC]	62.00	SM
E61	CHLORINATED RUBBER BASED TITANIUM OXIDE PIGMENTED INTERMEDIATE PAINT [WHITE] - [50 MIC]	104.00	SM
E62	EPOXY RESIN BASED TWO PACK, TITANIUM OXIDE/DEPIGMENTED INTERMEDIATE PAINT [WHITE] - [100 MIC]	44.00	SM
E63	ZINC CHROME PRIMER IS104 40 MICRONS	23.50	SM
E64	RED OXIDE ZINC PHOSPHATE PRIMER 80 MICRONS	46.00	SM
E65	UT OF WELD,BUTT JOINTS OR FILLET WELDS OF COLUMNBASE (ALL WELDS) THICKNESS 12 TO 32MM ASPER AWS D.1.1	43.00	MR
E68	LABOUR COST FOR ONE COAT OF PAINTING. (PAINT- BHEL SUPPLY).	3.60	SM
E69	SYNTHETIC ENAMEL TO IS 2932 GREY SHADE RAL 9002 [20 MICRONS].	28.00	SM
E71	ULTRASONIC TESTING [UT] OF PLATES / STRUCTURALS	36.50	SM
E72	CONVERSION CHARGES FOR EXPORT PACKING [FOR FINISHED COMPONENT WEIGHT [DU WEIGHT]]	1053.00	MT
E73	RECOVERY RATE FOR STAINLESS STEEL [MAGNETIC] SCRAP	33700.00	MT
E76	CONVERSION CHARGES FOR STRUCTURALS TO STRUCTURALS	1500.00	MT
E77	JOINTS OF CS/ HIGH TENSILE PLATES UPTO 4 MM/RM	53.00	MR
E78	JOINTS OF CS/HIGH TENSILE PLATES 5MM TO 10 MM/RM	165.00	MR
E79	JOINTS OF PLATES 12 TO 20 MM /RM	288.00	MR
E80	JOINTS OF BEAM/CHANNEL UPTO 200 MM /JT.	90.00	NO
E81	JOINTS OF BEAM/CHANNEL 201MM - 300 MM /JT.	120.00	NO
E82	JOINTS OF BEAM/CHANNEL 301- 450 MM /JT.	208.00	NO
E83	JOINTS OF ANGLES UPTO 75X75X8	40.00	NO
E84	JOINTS OF ANGLES ABOVE 75X75X8 UPTO 100X100X12	70.50	NO
E85	JOINTS OF ANGLES ABOVE 100X100X12	155.00	NO
E86	JOINTS IN BEAM /CHANNEL ABOVE 450 MM	400.00	NO
E87	ADDITIONA JOINTS FOR PLATES 21-25 MM/RM	535.00	MR
E88	ADDITIONAL JOINTS FOR PLATES 26-32MM/RM	750.00	MR
E89	ADDITIONAL JOINTS FOR PLATES 33-36 MM /RM	856.00	MR
E90	ADDITIONAL JOINTS FOR PLATES 37-40 MM/RM	952.00	MR
E91	ADDITIONAL JOINTS FOR PLATES 41 - 50 MM /RM	1077.00	MR
E92	ADDITIONAL JOINTS FOR PLATES 51-56 MM /RM	1434.00	MR
E93	ADDITIONAL JOINTS FOR PLATES 57 MM AND ABOVE/RM	1500.00	MR
E94	CHLORINATED RUBBER PAINT (RAL)- 40 MICRONS	56.00	SM
E95	TESTING CHARGES OF GATE ASSEMBLY ELECTRICALLY OPERATED UPTO 7 MT	4500.00	NO
E96	TESTING CHARGES OF GATE ASSY ELECTRICALLY OPERATED ABOVE 7 AND UPTO 10 MT.	5123.00	NO
E97	TESTING CHARGES OF GATE ASY ELECTRICALLY OPERATED ABOVE 10 MT.	9300.00	NO
E98	EXTRA CHARGES PAYABLE FOR FIXING OF BULB SEALS (BULB SEALS ISSUED AS FREE BY BHEL AND APPLICABLE FOR GATE ASSEMBLIES LOADED UNDER RS-NO 117E, 117F, 117G, 118B, 118C, 119A)	25000.00	MT
EE3	RECOVERY FOR EMITTING ELECTRODES DTS	0.50	NO



Enquiry Number: 654015E

Dt.26.04.2016

SECTION IV

GENERAL TERMS & CONDITIONS OF THE TENDER

Before preparing the offer, vendors are requested to go through the following details carefully

A] Eligibility of Vendors

i) New Firm (So far not registered with BHEL, Ranipet as Outsourcing Vendor)

New Firms who are having sufficient manufacturing facilities and experience in manufacturing of similar Fabrication / Machining of jobs for Boiler Auxiliaries components like **Aluminium Casing Support** in accordance with the Technical Specification/BHEL Engineering Drawings/Quality Documents out of Raw Materials/Components to be supplied by BHEL, Ranipet as free issue.

New vendors are eligible to quote for the items Rate Schedules (RS) subject to meeting eligibility criteria (w.r.t. the Facilities, man-power, Financial stability, experience in completing similar/same job earlier) by supporting with relevant documents.

Letter from Bank for credit facilities including submission of BG for Rs.10 Lakh within 15 days of finalising order is to be submitted by the vendor along with Technical Bid.

Filled-in Vendor Registration form as in Annexure-K is mandatory for all new firms.

ii) BHEL registered Vendors (Other BHEL units):

Vendors registered with any other unit of BHEL for the similar jobs, shall give details of their registration along with the category registered for. Such Vendors also treated as new vendors for evaluation purpose.

iii) Existing Firm (Registered with BHEL, Ranipet as Outsourcing Vendor having Vendor Code)

Firms already registered with Outsourcing (OS) BHEL/BAP/Ranipet shall indicate vendor code and Fresh assessment shall be done by BHEL for approval for these items subject to meeting the eligibility criteria for the respective item.(w.r.t. the Facilities, man-power, Financial soundness, experience in completing similar/same job earlier).

All Vendors have to submit relevant form Annexure- FR to evaluate their eligibility for the quoted items.

Note:

(i) The facilities requirement indicated in the tender should be available in working condition as on date at the time of submission of offer and to be made available for the whole contract period. Vendors shall not quote for the ranges-which are beyond their manufacturing capacity.

(ii) Firm Land shall be owned either by the partners/ proprietor or registered in the name of the firm. In case of Leased land, the lease agreement shall be registered in the name of either by the partners/ proprietor or registered in the name of the firm and valid for a minimum period of 3 years from the date of Tender Opening. Self attested Copy of Lease agreement / own land document to be enclosed along with the tender.

B] Vendors Not Eligible to Quote



Vendors declared / notified as defaulters / poor performers on quality / delivery grounds are not eligible to quote. The vendors with whom the material shortages were found during stock verification and not settled at the time of price bid opening will not be considered. Offers if any received such vendors shall not be considered.

Vendors under Hold/Delisted/Banned by BHEL are not eligible to quote.

Vendors who have quoted in Open Tender for 2014-15 ARC in MAIN or LDPP, ranked L1 rate in any of the Rate Schedules and not signed the Annual Rate Contract 2014-15 are not eligible to quote for this tender.

CJ Eligibility of Vendors Regarding Facilities (Mandatory) : The vendors must have the facilities given in the **Annexure- FR** to quote for this tender else their offer will be rejected.

DJ Distance Criteria for the New Firms

Vendors located (a) within the radius of 350 KM from BHEL Ranipet only can quote.

EJ EMD (Earnest Money Deposit)

Non MSE Vendors has to submit EMD for Rs. 2.00 Lakh in the form of Demand Draft favouring "Bharat Heavy Electricals Ltd., Ranipet – 632 406" payable at Ranipet,

(i) No interest shall be payable by BHEL on Earnest Money Deposit (EMD).

(ii) EMD will be forfeited if

a) The Tenderer withdraws his Tender within the validity period,

b) After becoming L1, if the firm does not sign the contract or not submitting the required base BG within the specified period, the EMD will be forfeited.

(iii) The EMD submitted by the vendors will be returned within a month from the date of signing the contract.

FJ Validity of Offer

Price validity shall be One Year from the date of finalisation of Annual Rate Contract; however the validity date of the offer is 180 days from the date of tender opening for ordering. (Note: If Supplier does not honour his own offer or any of its conditions within the validity period, penal action deemed fit as per Cl.R of Section IV - Suspension of Business Dealings with vendors).

GJ Submission of Offer

TENDERS

The Bids shall be submitted in three parts namely (i) Earnest Money Deposit (EMD) fee Cover/ Micro Small Medium Enterprises (MSME) EM-II valid certificate (ii) Techno Commercial Bid Cover and (iii) Price bid cover. All these Three covers should be sealed individually and to be put in a single envelope.

Sealed tenders super-scribed with Tender Number with date, Due Date, ARC-AL-CASING-2016-17 & Supplier's Name, Vendor Code/Reference Code shall be addressed to Sr.Manager / Contracts, Outsourcing Department, Bharat Heavy Electricals Limited, Ranipet – 632 406, Tamilnadu, India, so as to reach him on or before the date and time specified in the tender.

The bidders are requested to submit the bids with double stapled on the left middle of the papers, and tied with file tag. Bidders are also advised strictly not to submit the bids with spiral binding & hard book binding, as it will hamper the evaluation of the offers.

The details of contents of the offer covers are as under:-



Sealed Single Envelope super-scribed, with ARC-AL-CASING-2016-17, Tender Number & Date, Tender Due Date, Vendor's Name & Vendor Code / Reference Code containing:

Cover I: EMD / MSME Requirements

Sealed Cover super-scribed "Cover I – EMD / MSME Requirements" with ARC-AL-CASING-2016-17, Tender Number & Date, Vendor's Name & Vendor Code / Reference Code containing:

- a) **Check list for Cover-I**
- b) **Earnest Money Deposit (EMD) Rs. 2.00 lakh** in the form of Demand Draft, as called for (for Non MSE supplier), **(OR)**
- c) **MSME documents** to avail exemption from submission of EMD: –
 - i. Self Attested Copies of either EM II (Entrepreneur Memorandum Part II) having deemed validity Five years from the date of issue of acknowledgement in EM II from the date of acknowledgement of the EM II certificate **(or)**
 - ii. Valid NSIC Certificate **(or)**
 - iii. EM II Certificate along with attested copy of a CA Certificate (Format enclosed as **Annexure-G** where deemed validity of EM II certificate of five years has expired) applicable for the relevant financial year (latest audited).

Date to be reckoned for determining the deemed validity will be the date of Tender opening. Non submission of such documents will lead to consideration of their bids at par with other bidders and MSE status of such suppliers shall be shifted to Non MSE supplier till the supplier submits these documents.

Note:

- (i) Cover I received without EMD or all Supporting MSE Documents as specified above will lead to rejection of the offer.
- (ii) The Cover II and the Cover III of such offerors shall not be opened and they would not be eligible to participate in the tender further.

Cover II: Qualifying Criteria, Techno-Commercial Bid

Sealed Cover super-scribed "Cover II – Qualifying Criteria Techno-Commercial Bid" with ARC-AL-CASING-2016-17,, Tender Number & Date, Vendor's Name & Vendor Code / Reference Code containing:

- a) **Check list for Cover-II (Annexure-B)**
- b) **Signed in Standard Commercial Terms & Conditions format** given as **Annexure-E.,**
- c) **Signed in Technical Bid** for each Group quoted in this tender (without Price) as per **Annexure-C1**
- d) **Affidavit** in Stamp Paper value Rs.100 as per **Annexure-I**
- e) **Own land - Document copy / Lease Land – Self attested Copy of Registered Lease Agreement and Encumbrance Certificate covering past 20 years for Own/Lease land.**
- f) **Letter from Bank for the Credit facility including submission of BG for 10 Lakh (for New Vendor)**
- g) **Documents to be enclosed for Partnership Firm –Self Attested Copies**
 - i) Latest Form- A, issued after 01.04.2015.
 - ii) Partnership Deed Copy (AT WILL).
- h) **Documents to be enclosed for Limited Firm (Private Firm) – Self Attested Copies**
 - i) Latest resolution by Board of Directors.



- ii) Memorandum of Article of Association.
- iii) Company's Affidavit for existence
- iv) Latest Annual Report.
- v) Directors Share details
- i) **Vendor Registration Form** given as **Annexure-K** along with all necessary documents **(For New Vendor)**
- j) **Manufacturing Facilities Available with Firm** as per format given in **Annexure-FR**
- k) **Experience** - Documentary proof for having experience with self attested copies

Note:

(i) All new firms submitting the offer shall be subjected to assessment of vendor registration forms **(Annexure-K)** along with supporting documents & spot evaluation (if applicable) for considering their offer. Price bids of firms failing to meet the Technical Qualification / Eligibility Criteria of the quoted items (Rate Schedules) shall not be considered for further processing in the tender.

(ii) Offers shall be submitted along with PAN No., CST & TIN No. / Tariff No. etc, failing which BHEL will not be liable for payment. Our TIN No. 33243560005, CST No. 239383/11.06.91, BHEL ECC No. AAACB4146PXM008.

(iii) Money values shall not be indicated anywhere in the Technical Bid.

(iv) All Annexure to the Techno-Commercial bid should be serially numbered.

(v) Tenders not submitted in the prescribed formats given in the Annexures like *Standard Commercial Terms & Conditions, Technical Bid, etc.* and *incomplete offers* are liable for rejection.

vi) Documents shall be annexed in the order specified above (clause a to K of cover-II)

Cover-III: Price Bid

Sealed Cover super-scribed "Cover III – Price Bid" with ARC-AL-CASING-2016-17., Tender Number & Date, Vendor's Name & Vendor Code / Reference Code containing:

Price Bid - Price duly filled-in the Price Bid format provided in the tender document as **Annexure-D1** for each item Rate Schedule in conformance with the commercial terms as per Cover-II and copy of the filled price bid in CD.

The Prices shall be indicated in both figures and words. Unit rate only to be mentioned in the price bid.

Any Rates indicated other than in Price Bid cover III shall not be considered.

Note:

i) The price should be on "FOR BHEL, Ranipet" basis only (Inclusive of packing, forwarding and freight charges). No other delivery terms shall be acceptable.

ii) While quoting their rates, the Bidders are advised to take into account the likely expenditure, escalations, statutory requirements & levies, labour laws, safety requirements, taxes ,etc during the operation of Rate Contract for one year from the date of award of Contract. No price escalation/variations shall be entertained during the ARC period on any account. The rates are operative for placement of orders for **ONE YEAR** on Rate Contract basis to be entered into between BHEL and the Contractor.

iii) Tenderer shall bear all cost incidentals to preparation, submission and negotiations of the tender.



- iv) If BHEL withdraws the Tender before or after the receipt of offers, whether the offer is accepted or not, tenderer shall not be entitled to claim any costs, charges, expenses incidental or incurred by him through or in connection with the submission of the offer.
- v) In case, there is a discrepancy in the term quoted in techno-commercial bid and price bid, the term as per the techno-commercial bid (Cover II) shall hold good and the commercial term quoted in the Price Bid (Cover III) shall not be considered.
- vi) In their own interest, all Tenderers are advised to double check their prices before submitting the offer.
- vii) The quotation should be valid at least for a period of 180 days from the tender opening date.
- viii) Offers should be submitted One Set in original only.
- ix) The offers should invariably contain Signature (ink-signed) & Office Stamp of the Supplier. Any corrections / erasures in the offers should be initialled and stamped.
- x) Bidders should submit the prices in Indian Rupees only.
- xi) Offers in Hard-copy are only expected. As an exceptional case, the offers may be submitted to tenderoutsourcing@bhelrpt.co.in. BHEL is not responsible for non-receipt of offer by email in-time at our mail-box due to any kind of system delay/problem.

H] Persons Authorized for Signing the Offers:

The Tender documents shall be signed by the Authorized Signatory Only.

- i) Proprietary Firm:** In case of Single Ownership / Proprietorship establishment, the Tender shall be signed by the Owner / Proprietor Only.
- ii) Partnership Firm:** In case the Bidder is a Partnership Firm under Partnership Act, the Tender shall be signed by all the Partners of the firm or by the Managing Partner who have Signature and Seal of the Firm authorized to do so **OR** by a person holding the Power of Attorney on behalf of the Partnership Firm. Power of Attorney attested by a **Public Notary** shall accompany the Techno-Commercial-Bid. Power of Attorney shall be submitted as per format given as **Annexure J** only.
- iii) Private Firm:** Authorized signatory shall be the person holding "Power of Attorney" on behalf of the firm/company/Bidder-concerned and authorized/empowered by MD or Board of Directors or owner of the firm, to act on behalf of the firm for quoting this Tender and all proceedings connected with, till finalization and execution of the Contract. Power of Attorney attested by a **Public Notary** shall accompany the Techno-Commercial-Bid.

I] Opening of Offers

- a) Tenders shall be received up to 14.00 Hours (P.M) on the said due date and be opened on the same day at 14.30 Hours (P.M). Tenders received after 14.00 Hours (P.M) would not be opened. The times indicated are Indian Standard Time (IST).**
- b) It is bidder's responsibility to ensure that the Tenders are submitted before the specified date and time. BHEL shall not be responsible for any postal delay.
- c) If a Supplier submits only one envelope / cover containing all the bids or combined bids e.g. EMD/MSME documents, techno-commercial bid & price bid together, the bid is liable for rejection. The decision to accept such bids shall be the sole discretion of BHEL, which may be done by BHEL after segregating the bids so received.



d) First Cover I containing EMD / MSME documents shall be opened, only if EMD as mentioned above OR the valid MSME certificate is available, the respective Cover II - Techno Commercial bid will be opened subsequently.

e) Price bids – Cover III of Technically qualified bidders alone shall be opened on a later date. The date / time of Price Bid opening will be communicated to the technically qualified Bidders separately.

f) Witnessing the Tender opening

i) Such of those Tenderers who wish so, may participate in the Tender Opening by deputing their representatives. The representatives would be allowed to participate in the Tender opening only on submission of a signed and stamped authorization letter issued by the Supplier as per **Annexure-L**. Representatives without the Authorization Letter would not be allowed to participate in the Tender Opening.

ii) Representatives who turn up after the Tender opening time / start of the Tender opening would not be allowed to participate. After tender opening the details would not be given to such suppliers who choose to be absent at the Tender opening.

iii) Authorizations received by fax / e-mail would not be acceptable.

iv) Details of the vendors participated alone would be read out during Technical Bid opening and details of Price alone would be read out during Price Bid opening by the Tender Opening Officer.

Note

(i) Bids including all enclosures and supporting documents like catalogues, pamphlets, etc., shall be provided in ENGLISH language only.

(ii) Offers sent by e-mail / fax or any other mode other than the three cover system specified above shall be avoided. On an exceptional case offers may be e-mailed to tenderoutsourcing@bhelrpt.co.in .

(iii) At its option, BHEL may consider extending the due date/s for the tender openings. Sufficient notice would be given by BHEL for such extensions.

J) Evaluation of Techno Commercial Offers

a) For New Firm: The Techno commercial bids and Registration forms submitted by the firm will be scrutinized and if the firm is meeting the pre-qualification & mandatory requirements, if required then the firm may be visited by BHEL team for spot assessment of their works. Based on the assessment, BHEL assessors will communicate the suitability of vendor for the concerned Rate Schedules and the same will be communicated to the firm. Subsequently vendor code will be generated for the qualified Vendor and will be considered for Price Bid opening.

b) For Existing Firm: The Techno commercial bids submitted by the firm will be scrutinized and if the firm has quoted newly for this item Rate Schedules or not in the current business ,fresh evaluation will be carried out to check the eligibility of the vendor to proceed further for price bid opening.

c) The eligibility of the firms will be verified based on the pre-qualification criteria of the tender and compliance / confirmation to the tender requirements for each Rate Schedules quoted. Only those firms complying with the pre-qualification criteria shall be considered for participation in the tender. Once the vendor is found to be technically suitable meeting all the technical and commercial requirements of BHEL, price bid of those qualified vendors for respective category only will be considered for further processing.

d) Offers of vendors not technically qualified will be rejected and the same will be communicated to those vendors with reasons.

e) No deviation or change from the Tender conditions will be allowed and BHEL reserves the right to reject such offers.



KJ Evaluation of Price Bid

- i) The rates quoted shall be evaluated RS wise on the basis of "Total cost to BHEL".
- ii) If the rates of Two vendors are equal resulting in same ranking, among the equal ranked vendors, the sub-ranking will be done to differentiate (a) to decide the L1-vendor eligible for negotiation and (b) to decide H1-vendor for elimination of higher ranked vendors.

The sub-ranking will be done in-the-order by providing lower ranking for vendors

- (1) Not having listed as defaulter,
- (2) Become Sole-L1 for more number of Rate Schedules,
- (3) More the BG value available for OS-Main,
- (4) Less count of Pending IPs for more than 30 days,
- (5) Number of WO cancelled/Diverted due to reasons attributable to contractor (in Year 2014-15)
- (6) Nearer to BHEL by location
- (7) Earlier date of commencement of activity as in MSME certificate and/or
- (8) Draw of lots as a final measure (in presence of such vendors, who may like to be present).

iii) Tenderer contacted in this tender does not automatically qualify for consideration just because they are found to be the lowest in Tender. BHEL reserves the right to reject any offers without assigning any reasons. BHEL also reserves the right to negotiate or counter offer the rates to any of the parties at their discretion.

iv) If the L1 rate against any rate schedules are found not acceptable to BHEL, then the L1 firms may be called for negotiation before finalizing the rate.

v) BHEL has the right to refloat or short-close the Tender if L1 price is not the lowest acceptable price, or for other reasons.

vi) Elimination of Vendors: *H1 vendors will be eliminated for each Rate Schedules other than specified above.*

vii) The rates shall be quoted only in the Price Bid format for the concerned Rate Schedule attached, both in words and figures. Wherever there is a difference between the words and figures, the following guidelines will be followed.

a) If there is a difference between unit price and the total price (which is obtained by multiplying the unit price by the quantity), the unit price shall prevail and the total price corrected accordingly, unless in the opinion of BHEL there is an obvious misplacement of decimal point in the unit price, in which case the total price as quoted shall govern and the unit price corrected accordingly.

b) If there is an error in a total corresponding to the addition or subtraction of subtotals, the subtotals shall prevail and the total shall be corrected.

c) If there is a discrepancy between word and figures, the amount in words shall prevail, unless the amount expressed in words is related to an arithmetic error, in which case the amount in figures shall prevail subject to (a) and (b) above.

d) If there is such discrepancy in an offer, the same will be conveyed to the bidder with target date up to which the bidder has to send his acceptance on the above lines and if the bidder does not agree to the decision of BHEL, the bid is liable to be ignored.



viii) All bidders shall submit their offers by filling-in the format of the BHEL tender documents. Offers received in any other format are liable to be rejected. Offers are asked in BHEL's format for purpose of standardisation - to help in the offer evaluation.

ix) Offer with any pre-conditions (like conditional discounts) for price is liable for rejection.

x) BHEL reserves the right to reject without assigning any reasons other than already specified for such offers having deviations to BHEL Specifications, Standard Terms & Conditions at its discretion. The decision of BHEL in this regard shall be final.

xi) In case of any discrepancy between the description of the Rate Schedule or quantities, specifications, drawings and for other tender documents, the decision of BHEL in writing is final, binding and conclusive for the purpose of this contract.

xii) BHEL reserves the right to reject an offer due to unsatisfactory past performance during tender finalisation / execution of a contract at any of BHEL projects / units.

xiii) BHEL reserves the right to conduct negotiations on the "Price" and "Other Commercial Terms and Conditions" with the lowest ranked offeror and

xiv) If so required by BHEL, Supplier may have to share their cost data / costing sheet with BHEL.

xv) BHEL reserves the right to restrict the number of parties for award of contract.

L] Abnormally Low Offers

If the prices offered by L1 Bidders are found to be unrealistic, unworkable with respect to BHEL's estimate or prevailing market rates, BHEL will ask for justification also demand the break up cost element for such rates from the vendors with appropriate documentary evidence and if not submitted it will be construed that the vendor has offered the rates with an intention to sabotage BHEL Tender process/ tamper Tendering procedure, affecting the ARC process. In such cases, BHEL will have the discretion to reject the offer in line with BHEL procedures. Hence the bidders are advised to exercise abundant care in submitting a correct genuine offer.

M] Counter offer

i) Once the L1 rates for the rate schedules are finalized by BHEL, then the L1 rate shall be counter offered to the other technically qualified vendors for the quoted rate schedules for their acceptance.

ii) Based on the acceptance of vendors for the Rate Schedules, rate contract will be entered with those vendors for the accepted rate schedules.

v) Counter offering will not be extended to top higher ranked (H1.etc.) eliminated vendors.

vi) If none of the vendors are accepting for the counter offer given by BHEL, then BHEL will place orders on the L1 ranked vendor for the tentative quantity mentioned against each RS subject to the capacity availability indicated by the vendor.

N] Placement of Orders and Loading

a) Annual Rate Contract will be entered only with the vendors who respond to this ARC-Enquiry and only for the respective Rate Schedules quoted by them. New vendors who have not responded to this ARC-Tender-but registered/approved later, if any will be permitted in the next year ARC (provided they respond to the next-year ARC).



- b) Annual Rate Contract would be signed by the vendors for the acceptable Rate Schedules by way of becoming L1 and accepting counter offer rates for the respective Rate Schedules with BHEL, Ranipet subject to the availability of requisite acceptable Bank Guarantee.
- c) Tentative quantity likely to be ordered against each Rate Schedule is indicated in the Technical Bid. Tender quantity may increase/decrease during the rate contract period. BHEL does not guarantee any minimum load for any vendor.
- d) The contract is to be signed in Rs.100/- stamp paper. Hence after getting a confirmation on signing of contract, vendor shall get a stamp-paper for a value of Rs. 100/- and submit to BHEL for contract preparation.
- e) After finalization of tender, if the Contractor is awarded the Contract, Proprietor, Partners and Directors (as applicable) should physically present themselves and sign the contract in the presence of Head of OS Department within the dates specified.
- f) Orders would be placed as Addenda's on the Annual Rate Contract signed by the vendors.
- g) Loading priority will be given among the L1,L2,L3 vendors who have signed the Annual Rate Contract, in the order of original ranking (i.e. from L1 ranked vendor) subject to the capacity availability, Quality and delivery performance.
- h) If none of the vendors are accepting for the counter offer given by BHEL, then BHEL will place orders on the L1 ranked vendor for the tentative quantity mentioned against each RS subject to the capacity availability indicated by the vendor.
- i) The total available load from time to time will be distributed to those Contractors with preference to L1, L2 and L3, with whom Contract is entered into and to that Contract, the addenda shall be placed in a phased manner subject to the availability of potential for BHEL and also depending upon vendor performance such as collection of Raw materials in time, manufacture according to BHEL plans/requirements, meeting quality requirements, prompt returning & accountal of balance materials and also the minimum required facilities available at the Contractor's works to meet the job requirements and submission of other reports as called for, then and there. BHEL does not guarantee ordering of any minimum quantity on any Contractor.
- j) Purchase orders will be issued after entering into Rate contract with the Contractors. Discrepancy in the PO's if any, has to be settled immediately then and there within 10 days from the date of release of PO.

O] Execution of the Order

a) Once the order is released, vendor can view the orders in B2B portal of BHEL, Ranipet. However vendor has to collect hard copies of the Purchase order, IP(issue position), Engineering Drawings and relevant documents from BHEL through their authorised representative.

Based on the Rate contract, to be finalized, the Sub-Contractors shall accept and undertake all jobs awarded to them under various Rate Schedules allotted to them and execute them to the satisfaction of BHEL. Failure to comply with this requirement will be viewed seriously.

- b) Vendor has to collect Raw materials / Components from BHEL stores / Shop to their works on clearance.
- c) Vendor has to study the Drawings, Welding Procedure Specification (WPS), Standard Quality Plan (SQP), any Customer Hold Points (CHP), and any stage inspection requirement etc. carefully before start of manufacture.
- d) Vendor has to submit Cutting Plan (CP) for the collected Raw Materials within a week of collection and shall get approval from CP section before proceeding for manufacture.
- e) During manufacturing, wherever stage inspection is required, vendor has to offer for inspection to BHEL QC / BHEL approved Inspection Agencies for clearance to proceed further.



- f) All measuring Instruments to be calibrated as per standards at BHEL Metrology / any approved Labs on chargeable basis and manufacturing / inspection will be carried out with calibrated instruments only.
- g) On completion of Job, final inspection is to be offered to BHEL QC / BHEL approved Inspection Agencies with relevant Dimensional Report (DR). After clearance from the above agencies, Inspection Report (IR) has to be obtained for the same.
- h) Painting of one coat Red Oxide / applying of Rust Preventive oil on machined surfaces is to be made on the job.
- i) Despatch the items to BHEL, Shipping / Stores along with Delivery Chelan (DC), Inspection Report (IR), and Dimensional Report (DR) each 6 copies and shall get Inward Entry on Delivery Chelan (DC) from the Gate In charge.
- j) On delivery, authorised representative of vendor shall follow Shipping / Stores to control the DC's/Stores Receipt Voucher(SRV).
- k) Intimation of controlled DC's/SRV will be mailed by Finance to vendors for submitting the Invoices.
- l) Vendors have to submit the invoice and relevant documents to finance in stipulated time for the release of payments.
- m) In case of new vendors, The Inspection report on **First-of-trial** of First-addendum-PO shall be submitted. Further loading of jobs will only be considered after the successful completion of the First-addendum-PO.
- n) The Contractors are responsible till the semi finished components are safely deposited with BHEL / Ranipet. They should carefully pack, Load, and stack as per QWIs, for avoiding damages during transit and lash the consignment properly at the time of dispatch so that the consignment reach the destination safely.

P] Risk Purchase

Alternatively, the BHEL at his option will be entitled the contract and to manufacture elsewhere at the risk and cost of the seller either the whole of the goods or any part which the supplier has failed to deliver or dispatch within the time stipulated as aforesaid or if the same were not available, the best and the nearest available substitute therefor. The supplier shall be liable for any loss which the BHEL may sustain by reason of such risk purchases in addition to penalty at the rate mentioned in LD clause.

In case those vendors do not execute the orders, BHEL may get the job done through other sources at the Risk and cost of those vendors and the extra expenditure involved shall be recovered from these vendors from any amount due to them.

Q] Liquidated Damages:

BHEL will levy penalty as Liquidated Damages (LD), for delay in delivery. The damages shall be at the rate of ½% per week or part thereof subject to a maximum of 10%. Delivery for purpose of L.D, will be reckoned as the date of clearance of the items for dispatch by BHEL. Supplier should quote a definite delivery period and any delay in delivery will attract penalty.

The delivery period includes time involved in material collection, cutting plan approval, collection of further materials if any and handing over of the finished goods to BHEL-Shipping. Finished goods items shall be door delivered at Shipping/Stores inside the factory, BHEL, Ranipet.

R] Termination of Inquiry / Orders:

- a) BHEL reserves the right to cancel any inquiry before opening of the tender, without assigning any reason.
- b) BHEL reserves the right to cancel any tender and refloat a fresh tender, at any time after opening of the tender, in case it finds the response to its tender as not meeting its requirement. This shall be at the sole discretion of BHEL.



- c) In the event of non-performance of the contract by the Supplier, BHEL reserves the right to cancel the order with issue of a written notice. BHEL would provide a curing period of 30 days, for the Supplier to rectify the situation. If the Supplier fails to rectify the reason/s that led to the issue of cancellation notice by BHEL, then the cancellation order would be issued automatically by BHEL, without further recourse to the Vendor. BHEL will not pay any cancellation charges or any other charges / damages to the Supplier, arising out such cancellation.
- d) In the event of the non-performance of the contract, by the Supplier, the rights of BHEL include, in addition to cancelling the order, to take alternate action at the cost and risk of the supplier. The additional expenditure to be incurred by BHEL in such alternate action would be to the account of the supplier.
- e) BHEL reserves the right to cancel the order for delay in supply beyond penalty period without any monetary or legal obligations and at the risk and cost of the Supplier and
- f) BHEL will levy penalty as Liquidated Damages (LD), for delay in delivery. The damages shall be at the rate of ½% per week or part thereof subject to a maximum of 10%. Delivery for purpose of L.D, will be reckoned as the date of clearance of the equipment for dispatch by BHEL.

S) Suspension of Business Dealings with vendors

1) A Supplier may be put on hold for a period of ONE YEAR for future enquiries for specific material categories items/ works for Ranipet unit on the basis of one or more of the following reasons:

- a) Supplier does not honour his own offer or any of its conditions within the validity period.
- b) Rejection of three consecutive supplies of a specific material category , average Quality Rating (Quality rating as at the end of the previous calendar month falls below 80% of the quality weightage. This is irrespective supplies against PO(s) having single/multiple delivery schedules) due to reasons attributed to supplier (Once a lot is rejected, is repaired and accepted, it still constitute rejection).
- c) Two consecutive delays, for reasons of delay attributed to the supplier in execution of the contracts, where delay occurred is such that
- (i) Prescribed Maximum LD time limit of the contracts is reached/exceeded.
- (ii) Delay period as equaled / exceeded the original delivery period specified in the contracts, which ever among the above is earlier.
- d) Supplier performance rating in line with SEARP falls below 60% of the specific material category
- e) Supplier fails to respond against three consecutive tenders. The Regret letter from supplier with a valid reason will be considered as a response
- f) Supplier fails to settle any outstanding on account of material (including short returned) / Scrap OR on any other account
- g) Supplier works are under strike/ lockout for SIX months or more

2) A Supplier may be de-listed ie. Removed from the list of registered suppliers of our Unit for all category of the material for a period of TWO YEARS on the basis of one or more of the following reasons:-

- a) Supplier tampers with tendering procedure affecting ordering process
- b) Supplier has misused BHEL documents/ Drawings OR has breached the confidentiality agreements with BHEL and
- c) After placement of order, supplier fails to execute a contract.



3) A Supplier can be banned for a period of THREE YEARS from doing any business with all Units of BHEL on the basis of receipt of authentic evidence of one or more of the following reasons:

- a) Supplier is found to be responsible for submitting fake/ false/ forged documents, certificates, or information or has resorted to unethical, illegal means in getting the contract.
- b) In spite of warnings, the Supplier persistently violates or circumvents the provisions of labour laws/ regulations/ rules and other statutory Requirements.
- c) Supplier is found to be involved in cartel formation or in any act so as to influence the bidding process OR influence the price.
- d) The supplier has indulged in malpractices or misconduct such as bribery, corruption and fraud, pilferage etc.
- e) The Supplier is found guilty by any court of law for criminal activity/offences involving moral turpitude in relation to business dealings.
- f) The Supplier is declared bankrupt, insolvent, has wound up or been dissolved; i.e ceases to exist for all practical purposes.
- g) Supplier is found to have obtained any internal information / documentation of BHEL by unauthorised means
- h) Communication is received from the administrative Ministry of BHEL to ban the Supplier from business dealings.
- i) The foreign principles along with the representing agent shall be banned together if information submitted by them about their precise relationship, commission/ remuneration etc., payable/ receivable and other particulars as asked by BHEL, as per the extant guidelines regarding dealing with agents of foreign suppliers is found false/incorrect
- j) Supplier has substituted, damaged, failed to return, short returned or unauthorized disposed off materials/ documents/ drawings/ tools etc of BHEL.

4) The decision of suspension will be intimated to the vendors citing the reasons. The respective vendors shall attach importance to the issue and immediately acknowledge receipt of the communication and reply for the aspects raised.

T] Force Majeure

i) If at any time during the currency of this contract, the performance in whole or in part, by either party of any obligations under this contract shall be prevented or delayed by reason, of any war, hostilities, acts of the public enemy, civil commotion, sabotage, fires, explosions, epidemics, quarantine, restrictions or acts of GOD (hereinafter referred to as events), then provided notice of happening of any such events is given by either party to other within ten days from the date of occurrence thereof, neither party shall reason of such events be entitled to terminate this contract nor shall either party have any such non performance and delay is resumed as soon as practicable after such events has come to an end or ceased to exist. If the performance in whole or part of any obligation under this contract is prevented or delayed by reason or any such event claims for extension of time shall be granted for period considered reasonable by the purchaser subject to prompt notification by the seller to the purchaser of the particulars of the events and supply to the purchaser if required of any supporting evidence. Any waiver of time in respect of partial installment shall not be deemed to be a waiver of time in respect of remaining deliveries.



ii) If as a result of difficulty in procurement of raw materials or due to force majeure reasons or any other reasons what-so-ever the contractor is unable to keep the delivery schedule of the contractee, extension of time may be granted by the contractee at their discretion as may be necessary to the extent considered necessary should there be delay in supply beyond the extended date of delivery, it shall be open to the contractee to terminate the contract in part or full and make other arrangements for executing fabrication elsewhere at the cost and risk of the contractor.

U] Integrity Pact – Not Applicable

V] Others

a) The Firms are advised to study and understand the scope of work and the entire process of Contract execution involved before quoting. Any technical clarifications required can be sought in person or by e-mail one week before the due date of Tender opening.

b) In case of any contradiction in the terms and conditions given here and elsewhere in the other documents of the tender or any omissions in the Tender documents or for any clarifications in the tender conditions, it shall be the responsibility of the tenderer to get it clarified from BHEL. The officer authorized to provide such clarifications is the Sr.Manager / Contracts, Outsourcing Department, Phone: 04172 – 284030, e-mail mkmoorthy@bhelrpt.co.in, , srsekaran@bhelrpt.co.in

c) Alterations to the conditions of the Tender can be done only by the authorized officer, at any time before the date and time of tender opening. Such changes, if any, would be communicated in writing and / or hosted in the web-page.

d) BHEL will conclude that the offer has been submitted by the firm fully understanding all the requirements both explicit and implied and other conditions and accepting the same. After tender opening, the bidders are not allowed to change / alter any of the conditions either partly or fully. Offers of any such firms doing so, will be rejected.

e) Conditional and late Tenders, Tenders which are incomplete or otherwise considered defective with respect to Tender conditions and Tenders not in accordance with the Tender conditions herein contained and the Tenders not in original shall be rejected out rightly, at any point of time during the Tender processing.

f) Should the tenderer or the contractor have a relation or relations in the case of a firm or company of contractors, one or more of its shareholders or relations or relations of the share holders employed in BHEL or any ex-employee who has retired / resigned within a period of two years as on date of quotations or at any subsequent date after the award of the contract, the authority inviting the Tender shall be informed of the fact at the time of submission of the tender and there after as applicable and obtain the clearance of BHEL for such engagement failing which, BHEL may in its own discretion reject the tender or rescind the contract.

g) If a Bidder is found to have given false information / documents as a part of their offer, such offers shall be rejected / the contract shall be terminated and the firm shall be banned from getting business from all BHEL units.

h) If any Supplier attempts to bribe, or pay commission, gift or any advantage or bring in undue influence either by himself or on his behalf any one including a stranger to the tender, in addition to instituting legal proceedings as per the extant laws prevailing, will disqualify the supplier from this tender and all future tenders of BHEL. Decision of the Purchaser would be final in this matter.

i) The laws governing this transaction shall be the laws in India.

j) The tenderer shall acquaint himself with the conditions/limitations and official regulations under which or conforming to which the jobs are to be performed and shall examine carefully at the information as may be furnished to them in writing from time to time.



- k) The tenderer shall acquaint himself with applicable Acts.
- l) As a policy BHEL is not registering any power of attorney issued by Contractors/Contractors in favour of their bank for the collection of Invoice amounts on behalf of Contractors/Contractors and merely because BHEL had acted upon any such request by the party or their bankers does not constitute any legal right or binding on BHEL for any acts of omissions and commissions or failure to act upon it or for any payment made directly to the party. If any banker includes BHEL also as a party to any such dispute between the banker and the party, all legal and incidental expenses thereof will be recovered from the concerned parties only.
- m) In the event of an order, Supplier shall agree to settlement of disputes or differences, if any, by way of arbitration, in accordance with the "Rule of Arbitration" of the Indian Council of Arbitration.
- n) The offer/s of such of those bidders who do not accept for levy of liquidated damages (LD) for delay in delivery and who do not accept for submission of the BG for the value and period specified herein above is likely to be summarily rejected. No correspondence would be entertained by BHEL in this regard, on this subject. BHEL specifically draws the need of this mandatory requirement to the notice of all Bidders. The Price Bid of such of those offerers failing to meet this requirement, would not be considered for the Price-Bid Opening.*
- o) The language in the tender downloaded by the Bidders shall at no point of time be changed, altered or modified in any manner by the Tenderer. If such changes are made by any tenderer, it shall be considered as tampering with BHEL's specifications and the offer shall be summarily rejected, whenever it is noticed by BHEL. Such Bidders would be disqualified from the Bidding Process and their offers would be forfeited / Bank Guarantees invoked. They would not be allowed to participate in future tenders of BHEL.*

W] General :

1.0 Definitions : Throughout these conditions and in the specifications the terms :

- (a) "**The Contractee**" means the Bharat Heavy Electricals Limited, acting through the Additional General Manager, Outsourcing Department ,Boiler Auxiliaries Plant, Ranipet – 632 406 unless the context otherwise provides.
- (b) "**The Contractor**" means the person, firm or company with whom the order for machining / fabrication is placed and shall be deemed to include the Contractor's successor (approved by the Contractee), representatives, heirs, executors and administrators, as the case may be, unless excluded by the terms of the Contract.
- (c) "**The Drawings**" means the drawings exhibited or provided for the guidance of the Contractor.

1.0 Execution :

The whole contract is to be executed in the most approved substantial and workman like manner to the entire satisfaction of the contractee, or the inspecting officer, who shall have power to reject any of the fabrication of which he may disapprove; and his decision thereon and on any question as to the true intent and meaning of the specifications of drawings or of the work necessary for the proper completion of the



contract, shall be final and conclusive. The contractee may require alterations if any to be made during the progress of machining /fabrication, and should these alterations be such that either partly to the contract considers an alteration in the changes justified such alteration shall not be carried out until amended cost of machining /fabrication charges have been submitted by contractor and accepted to fabricate without obtaining the consent of the contractee in writing to an amended cost of machining /fabrication charges, the contractor shall be deemed to have agreed to execute fabrication at such charges as may be considered reasonable by the contractee.

2.0 Interpretation :

Any dispute or difference of opinion in respect of the interpretation, effect or application of this particular condition of the contract or of the amount recoverable here under from the contractor shall be decided by the contractee and the decision shall be final and conclusive.

3.0 Book Examination Clause :

(a) The contractor shall, whenever required, produce or cause to be produced for examination by any officer of the contractee authorized in that behalf any cost or other account book or account voucher, receipt letter, memorandum, paper or writing or any copy of extract from any such document and also furnish information and returns verified in such a manner as may be required in any way relating to the execution of this contract or relevant for verifying, ascertaining, the cost of execution of this contract (the decision of such officer of the contractee on this question or relevancy of any document, information or return being final and binding on the parties). The obligation imposed by this clause is without prejudice to the obligation of the contract/Job-Work-Order or under any statutory rules or orders binding the contractor.

(b) The contractor shall, if the authorized officer of the contractee so requires (whether before or after the prices have been finally fixed), afford facilities to the officer of the contractee concerned to visit the contractor's works for the purpose of examining the process of manufacture and estimate of ascertaining the cost of production of the articles. If any portion of the work be carried out by a Contractor or any subsidiary or an allied firm or company, the authorized officer of the contractee shall have power to secure the books of such Contractor or any subsidiary or an allied firm or company shall be open to this inspection.

4.0 Set – Off Clauses :

Payment shall be subject to the deduction of any amount, for which the contractor is liable under this contract, or any contract in respect of which Bharat Heavy Electricals Limited, Ranipet 632 406, Tamilnadu **or any other Unit/ Office of BHEL** is the **Contractee**.

5.0 Laws Governing the Contract :

(a) The contract shall be governed by the laws of Government of India in force.

(b) Irrespective of the place of execution of the contract, place of delivery, place of payment under the contract, the contract shall be deemed to have been made at Ranipet.

6.0 The Global Compact :

Global compact is a signature initiative of United Nations Security General and four United Nation Agencies

- Office of the High Commissioner for Human rights
- International Labour Organization
- United Nations Environment Programme
- United Nations Development programme

This is a board based initiative and engages:

- Individual Companies



- Business Associations
- International Labour
- Human Rights, Environment and development Organisations
- Academic & Public Policy Instructions and United Nations

The Contractee (BHEL) is a member of this Global Compact. As a participating Company, We have the obligation to

- ** Support and respect Human rights with in our spheres of influence.
- ** Make sure we are not complicit in Human right abuses.
- ** Make sure we are not employing forced or compulsory labour.
- ** Refrain from employing child labour
- ** Eliminate discrimination in our hiring and firing policies
- ** Support a precautionary approach to Health, Safety of employees and society and environmental challenges.
- ** Undertake initiatives to promote greater environmental responsibility
- ** Encourage development and diffusion of environmentally friendly technologies.

Contractor shall also ensure to fall in line with the above principles.

8.0 Occupational Health and Safety Management System (OHSAS 18001) and Environmental Management System (EMS 14001)

BHEL/BAP/RANIPET got accreditation Occupational Health and Safety Management System (OHSAS 18001) and Environmental Management System (EMS 14001). As per this, OS Contractors are requested to meet the requirements of EHS (Environmental Health & Safety) guidelines (mentioned below), while engaging and using Vehicles for incoming/outgoing transportation.

- To have valid Driving licence and RC book for the Transports
- To load the vehicle/bullock cart within the Safe Working Load (S.W.L.) The S.W.L. is to be displayed/painted on the vehicle/bullock cart.
- To load the material in such a way that it should not project outside the dimensions of the Vehicle/bullock cart.
- To stack the material in a manner that the material should not slide/fall during transportation.
- During manual lifting with an Adult, the weight should not exceed 50 kg.
- To attempt to adopt OHSAS 18001 / ISO 14001 requirements in their manufacturing process at Contractor's work place.
- To comply with applicable provisions of the Central Motor Vehicles Rules 1989 (Rule:136 and if any). List of important Phone Nos: (given by OS) should be available with the driver while transporting BHEL materials.
- To train drivers to handle emergency situation during transportation.
- To follow the Various Acts/Rules and Regulations (particulary Factories Act 1948 and Tamil Nadu Factory Rules 1950) applicable to them.
- To maintain valid PUC (Pollution Under Control) certificates and produce while vehicle is in this company premises.



Contractors are requested to meet the requirements of OHSAS 18001 / ISO 14001 as given below:

- ** To adopt OHSAS 18001 / ISO 14001 requirements in their manufacturing process at Contractor's work place.
- ** To comply with applicable provisions of the Central Motor Vehicles Rules 1989 (Rule: 136 and if any).
- ** To follow the applicable Acts/Rules and Regulations (like Factories Act 1948 and Tamil Nadu Factory Rules – 1950) applicable to them.
- ** In addition to this, they should follow the day to day communication of OS on this regard.

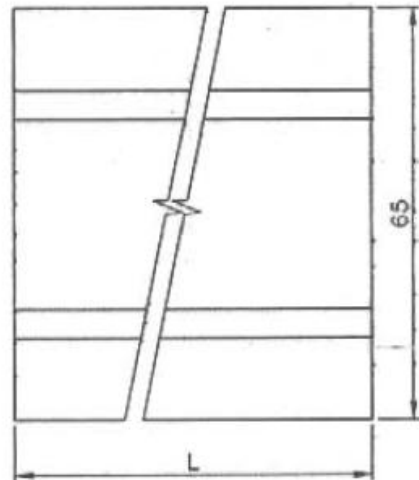
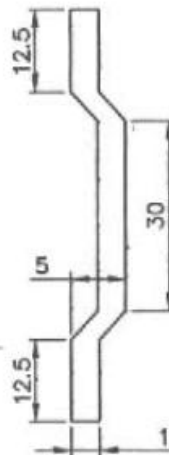
Attention to Vendors

- **Attach only the documents mentioned above under Clause G – Submission of Offers.**
- **Write Vendor Code / Vendor reference Code (size 1 Sq. Inch) at the Left Top Corner of the Main Envelope and all the 3 Covers.**
- **Write Vendor Code / Vendor reference Code legibly in the offer wherever required.**
- **Write Vendor address in all the covers at the Left Bottom corner**

CAUTION: The information on this document is the property of BHARAT HEAVY ELECTRICALS LTD. It must not be used directly or indirectly in any way detrimental to the interest of the company.

REV	DATE	ALTERED ==gd==	REV	DATE	ALTERED ==gd==
01	13.2.84	CHECKED ==gd==	02	30.07.02	CHECKED ==gd==
Title modified			Thickness altered		
REV	DATE	ALTERED Parasu			
03	14.06.13	CHECKED C.Ganesh			
Variant 03--770mm length added.					

ALL DIMENSIONS ARE IN MILLIMETRES



NOTE: -

1. MATERIAL SPECIFICATION ALUMINIUM ALLOY 31000-H4 TO IS: 737(Latest to be referred).
2. Mark the Material code and BPS code.

03	68	770
02	68	850
01	68	650
Var No	Developed Width	Length-L

03	Casing Support--1mm thk L-770mm	94137020000		0.145
02	Casing Support--1mm thk L-850mm	941370110000		0.156
01	Casing Support--1mm thk L-650mm	941370130000		0.119
Var No	DESCRIPTION	MATL CODE	A	UNIT WT.
		MATL SPECN.	C	QTY

		BHARAT HEAVY ELECTRICALS LTD., UNIT: BOILER AUXILIARIES PLANT, RANIPET - 532 406.		DRN	NAME	SIGN	DATE	NO. OF
DEPT	AQCS	GRADE OF	UNTOL.DIM	CHD	G.D.N	==gd==	28.06.82	VAR
CODE	862	PR: QA: 500		APPD	T.K	==gd==	08.07.82	-
		SCALE	WEIGHT (KG).	REF. TO ASSY./OLD DRG.		APPD	S.K	09.07.82
		N.T.S	*	BPS 516006				
TITLE				CARD	DRAWING NO.		ITEM NO.	NO. OF
C A S I N G S U P P O R T				CODE	6160-0141		-	ITEMS
(Aluminum)				U 01				
								REV
								03

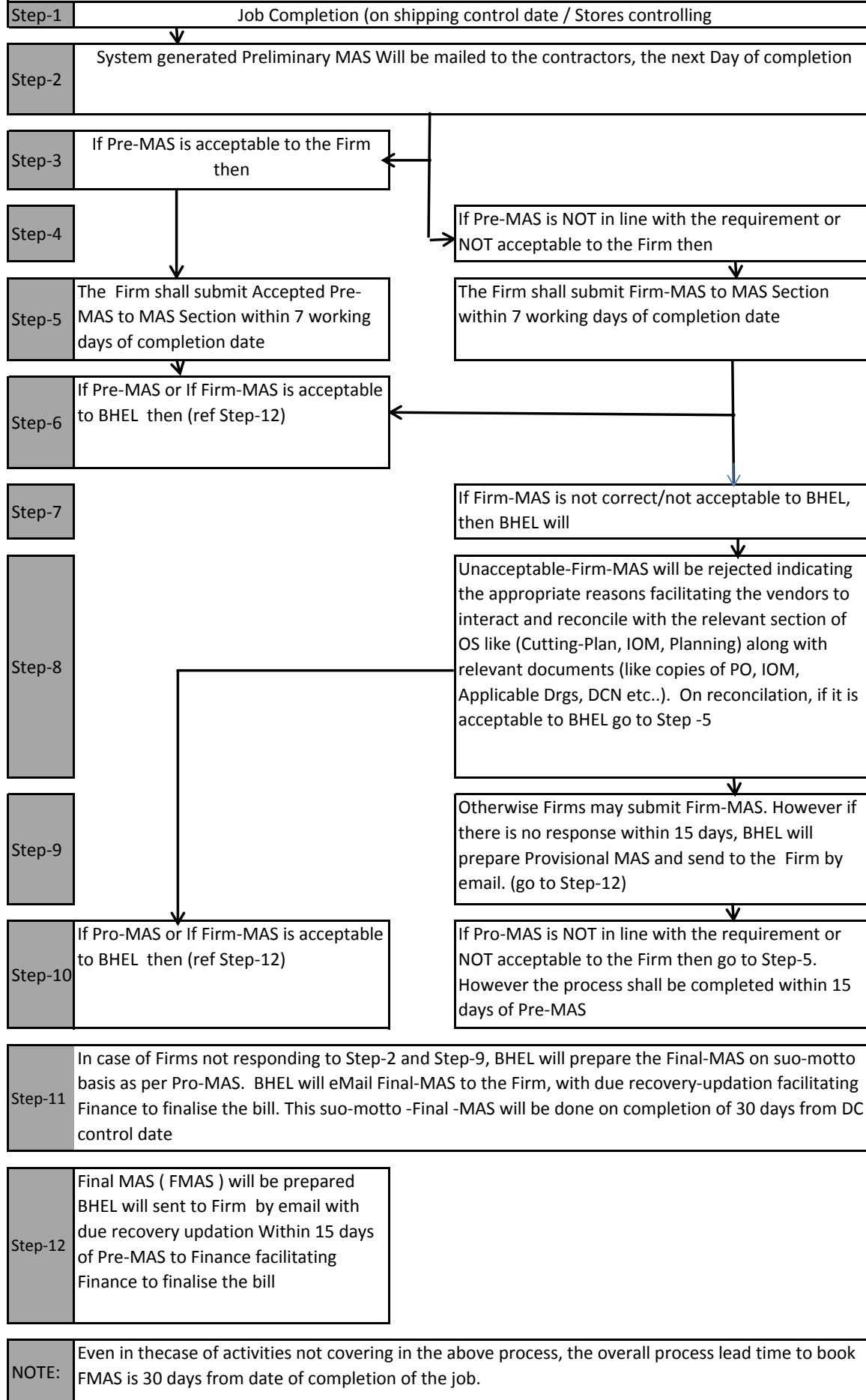
Size A4

Section-VI

Enquiry No.654015E

Dt.26.04.2016

Flow chart for processing of Material Account Statement (MAS)



NOTE:

Even in the case of activities not covering in the above process, the overall process lead time to book FMAS is 30 days from date of completion of the job.

Section IX

BHEL/BAP/Ranipet ::: OS-AL . CASING - ARC-2016-17 ::: Enquiry 654015E Dt.26.04.2016 ::: PAGE: 01 / 04

List Of Standard QWI

PROCEDURE NUMBER	Rev	Effective Date	Title Of The Procedure
A. GENERAL			
PR:QA:076	00	01/10/88	Kerosene Leak Test
QCP:002 A1(RP) A1(PP)	01	01/01/95 28/01/95 28/08/01	Fabrication Of Structural Part (Fabrication Of Non Pressure Parts)
SIP:NP:06	00	15/07/96	Procedure For Visual Inspection Of Non Pressure Parts
SIP:NP:07	00	15/07/96	Welding Qualification For Structural Application
SIP:PP:22	03	10/05/03	Procedure For Surface Preparation And Painting
BAP:NDT:RP:MT:01	02	14/08/99	Procedure For Magnetic Particle Examination Of Ferric Material And Welded Components
BAP:HT:001 A1	05	11/07/96 06/07/03	Heat Treatment Schedule
BAP:NDT:RP:PT:01	02	14/08/99	Procedure For Liquid Penetrant Examination
PR:QA:500	00	16/01/93	Procedure For Allowable For Deviations For Dimensions Without Specified Tolerances
PR:QA:502	00	21/04/93	Procedure For Restarting Of Furnace In Case Of Power Failurss
PR:QA:504	00	27/05/93	Procedure For Seaworthy Packing Of Components For Export Contracts
PR:QA:505	01	14/07/93	Procedure For Storage Of Shelf Life Items Like Rust Preventive Fluids, Paints, Rubber Components, Grease, Anti Seize Compounds And Similar Components/Items
PR:QA:506	00	10/08/01	Verification (Or) Checking Of Steel Measuring Tapes Used By Subcontractors (Or) Vendors
PR:QA:507	00	05/07/93	Procedure For Localised Heat Treatment On Structural Weld Joints
PR:QA:508	02	31/03/98	Procedure For Blast Cleaning
PR:QA:509	00	04/08/93	Guide Lines For Ndt Requirement On Gas Cut Edges
PR:QA:510	00	10/06/92	Measurement Of Internal And External Key Way Dimensions
PR:QA:512	00	31/04/94	Procedure For Control Of Surface Preparation And Painting Of Fabricated Components At Sub Contractors Works
PR:QA:514	03	24/07/99	Procedure For Color Coding Of Raw Material
PR:QA:516	00	24/04/95	Product Ncr Cause Codes
PR:QA:521	00	31/08/95	Codification Of Sars
PR:QA:590 A1 A2 A3	00	10/10/02 01/01/03 05/02/03 26/04/03	Procedure For Surface Preparation And Painting For Bap Products
SQW-01	00	10/06/93	Standard Qp For Welding
B. ELECTOSTATIC PRECIPITATORS			
QCP:E:002 A1	02	03/03/00 04/01/01	Splicing Norms For Sheets, Plates And Other Structural Items
QCP: E:009	00	05/10/88	Manufacture Of Packing Frames And Angle Irons For Collecting Electrodes
QCP:E:18 A1 A2	00 00 00	30/04/92 07/07/93 2801/95	Grip Coupling
SQP:ESP:201	00	20/01/01	Pin Wheel Assy
SQP:ESP:283	00	20/06/98	Esp Supporting Structure(Column And Bracing & Long And

Section IX

BHEL/BAP/Ranipet ::: OS-AL . CASING - ARC-2016-17 ::: Enquiry 654015E Dt.26.04.2016 ::: PAGE: 02 / 04

List Of Standard QWI

A1	00	17/08/00	Transverse Roof Beams)
A2	00	04/01/01	
A3	00	23/07/02	
SQP:ESP:284 A1	00 00	20/06/98 25/01/01	Plate Formed Fabricated Components Side Panels , Casing Shell , Top Panel , Hopper Wall, Roof Panel, Funnel Assy And Its Splitters, Gd Housing Panels
SQP:ESP:285 A1	00 00	20/06/98 25/01/01	Collecting And Emitting Electrodes Suspension Frames Of Esp
SQP:ESP:286	00	20/06/98	Rapping Shaft Foundation Bolts & Lifting Holders
SQP:ESP:287 A1 A2	00 00 00	20/06/88 18/09/00 25/01/01	Inner Arm,Outerarm,Shockbar,Vertical Stay,Vertical Beam,Supporting Beam.
SQP:ESP:288 A1	00 00	20/06/98 25/01/01	Insulator Housing
SQP:ESP:289	00	20/06/98	Expansion Joint
SQP:ESP:290 A1	00 00	20/06/98 25/01/01	Screen Sheet
SQP:ESP:260 A1 A2	00 00 00	31/01/94 05/11/97 15/02/02	Guillotine Gates

C. WEG AND CHIMNEYS

QCP:W:001	00	20/07/96	Qcp For Wind Mill Structure
QCP:W:003	00	18/11/94	Qcp For Nacelle Cover Assembly
QCP:W:004	01	17/07/96	Qcp For Assembly For Nacelles Of Wind Generators(Nortex Design)
QCP:I:001 A1 A2	03	29/06/94 28/11/00 27/12/00	Qcp For Ipp Chimenys
PR:QA:518	00	27/05/95	Surface Preparation And Painting Of Weg Tower And Nacelle
PR:QA:542	00	09/03/99	Procedure For Trial Assy Of Cylindrical Steel Chimney Shells

D. GATES AND DAMPERS OF BOILER DUCTS

SIP:NP:08	00	15/07/96	Quality Requirement For Manufacturing Of Seals For Louvers, Biplane Dampers And Gates
SQP:NP:03 A1 A2	01	01/02/95 12/08/00 27/02/02	Louvers And Biplane Dampers
SQP:NP:04 A1	01	01/02/95 04/12/96	Guillotine Gates
ICL-DAM:502	00	28/02/02	Inspection Check List For Biplane Dampers

E. FANS

QP:FAN:302	00	12/01/01	Rvc Assy
QP:FAN:304	00	29/10/01	Pent House Ventilation Fan/Seal Air Fan
QP:FAN:306	01	10/06/94	Seal Air Fan
QP:FAN:317 A1 A2	04	11/08/97 22/08/98 07/12/00	Radial Fan Impellers And Conical Cover Plate
QP:FAN:323	01	11/12/94	Connecting Ring And Supporting Ring
QP:FAN:324	01	15/11/93	Bush For Servo Motor
QP:FAN:326	01	26/07/95	Ap Fan Shaft Assy
QP:FAN:327	01	28/09/96	Piston With Adjusting Disc
QP:FAN:328	01	06/07/94	An Fan Impeller
QP:FAN:329	00	22/11/93	Ap Impeller Cover Plate

Section IX

BHEL/BAP/Ranipet ::: OS-AL . CASING - ARC-2016-17 ::: Enquiry 654015E Dt.26.04.2016 ::: PAGE: 03 / 04

List Of Standard QWI

A1		13/01/94	
QP:FAN:330 A1	00	22/11/93 13/01/94	Ap Hub With Supporting Body
QP:FAN:332	01	20/06/94	Blade Shaft
QP:FAN:333 A1	00	22/11/93 13/01/94	Cylinder Assy
QP:FAN:334 A1	00	22/11/93 13/01/94	Ap Hub Disc
QP:FAN:335 A1	00	22/11/93 13/01/94	Ap Fan Bearing Cover
QP:FAN:336 A1	00	22/11/93 13/01/94	Impeller Hub And Blade Bearing Assy
QP:FAN:338 A1	00	22/11/93 13/01/94	Supporting Body
QP:FAN:342 A1	01	29/11/94 11/08/03	Spiral Casing Of Ndv, Ndzv And Ndfv Fans
QP:FAN:343 A1 A2	03	22/07/95 09/05/01 02/01/03	Damper Control Assy
QP:FAN:345 A1	00	06/07/94 19/08/97	Radial Fan Shaft Of Tube With End Piping Design
QP:FAN:346	01	31/05/95	Solid Shaft Of Radial Fans
QP:FAN:347	02	20/06/95	Impeller Of Czech Design D1 Type
QP:FAN:348	00	10/06/96	Ap Fan Hsg And Hub Front Part
QP:FAN:350	00	05/06/95	Expansion Joint For Fans
QP:FAN:352	00	13/11/95	Shaft With Brg Assy(Tube Type)
QP:FAN:353 A1	01	09/12/95 15/02/00	Control Rod And Control Slide/Control Sleeve
QP:FAN:354 A1	00	03/02/96 05/12/00	Radial Fan Rotor Asssy
QP:FAN:355	00	26/04/96	Hub With Flange
QP:FAN:356	01	10/06/96	Outlet Guide Vane Assy
QP:FAN:357	00	05/12/00	Steel Compensating Weight Of Ap Fan
QP:FAN:358	00	05/12/00	Ap Fan Lever
QP:2:4:271 A1	00	18/05/81 22/08/94	Igv Assy (Nd Type Fans)
QP:2:4:272 A1	00	18/05/81 22/08/94	Igv Assy (An Type Fans)
QP:2:4:273 A1	00	18/05/81 22/08/94	An Static Fan Parts(Kkk Design)
QP:2:4:274 A1	00	18/05/81 22/08/94	Ap Static Fan Parts(Kkk Design)
QCP:F:002 A1 A2	00	16/05/88 22/08/94 03/09/98	Ap Fan Diffuser Assy
QCP:F:007 A1	00	16/05/88 20/08/94	Ap Fan Suction Chamber
QCP:F:010 A1	00	16/05/88 18/08/94	Brg Pedestal,Base Frame For Hydraulic Coupling,Base Frame For Moyor
SQP:312	01	12/01/02	Lube Oil System And Fittng
PR:QA:302	01	03/02/03	Requirements For Balancing Mandrel
PR:QA:304	01	03/02/03	Reblading/Repair Of Axialchezck Type/An Impellers
PR:QA:305	01	03/02/03	Trail Assy Of Ndzv Spiral Casing
PR:QA:309	04	03/02/03	Recommended Balancing Speeds For Fan Components
PR:QA:314	03	03/02/03	Verification Of Performance Of Balancing Machine With Master Rotor
PR:QA:321	03	03/02/03	Balencing Of Ap Fan Shaft

Section IX

BHEL/BAP/Ranipet ::: OS-AL . CASING - ARC-2016-17 ::: Enquiry 654015E Dt.26.04.2016 ::: PAGE: 04 / 04

List Of Standard QWI

PR:QA:323	02	03/02/03	Guidelines For Fixing Of Balancing Correction Masses
PR:QA:326	01	03/02/03	Hot Pressing Of An Impeller Blades, Root Stifners And Guide Vanes Of Ap, An Static Parts
PR:QA: 329	01	03/02/03	Assembly Of Functional Test Of Ndfv Shaft With Bearing Assy
PR:QA:333	01	03/02/03	Ensuring Specified Interference Fil Incase Of Deviation In Shaft In Tube Bore
PR:QA:341	01	03/02/03	Preservation And Packing Of Fan Rotor Assy

F. AIR PREHEATERS

QCP:2:4:258 A1 A2	00	01/03/81 13/01/02 05/02/03	Cleaing Devices Of Aph
SQP:APH:104	01	27/01/03	Tubular Aph
SQP:APH:107	00	18/10/02	Heating Elements Basket Assembly
PR:QA:410	02	04/12/02	Procedure For Fabrication Of Extra Width Plates

G. DESALINATION

QCP:D:001	00	15/05/97	Fabrication And Assembly Checks On And Desalination Plants
PR:QA:526	01	14/08/01	Surface Preparation And Painting Of Components & Desalination Plants

H. List Of Cross Referred Documents For Fan

Sl. No	Sqp No.	Rev No.	Cross Referred	Superseded By
01	Fan:308	02	IS 2147	IS 13947
02	Fan:310	00	IS 2147	IS 13947
03	Fan:326	01	PR:QE:017/03 PR:QA:0173/00 PR:QA:061	PR:QA:337/00 PR:QA:341/00 PR:QA:338/00
04	Fan:331	00-A1	QCP:1600111530	PR:QA:328/00
05	Fan:336	00-A1	QCP:16000111529(4) PR:QA:082/00	PR:QA:332/00 PR:QA:331/00
06	Fan:339	00-A1	QCP:F:009/00-A1	PR:QA:320/01
07	Fan:341	00-A1	PR:QE: 017/03 QCP:F:004/00 PR:QA:173/00	PR:QA:337/00 PR:QA:321/00 PR:QA:341/00
08	Fan:345	00	PR:QE:017/03 PR:QA:173/00	PR:QA:337/00 PR:QA:341/00
09	Fan:346	00	PR:QE:017/03 PR:QA:173/00	PR:QA:337/00 PR:QA:341/00
10	Fan:354	00	PR:QA:061/00	PR:QA:338/00

Note: Vendors can view the documents at OS department also.

 <p>An ISO Company</p>	<p>BHARAT HEAVY ELECTRICALS LIMITED (A Government of India Undertaking)</p> <p>பாரதமிகுமின் நிறுவனம்</p>	<p>Ph: 04172-284030, 284158, 241170 Email: mkmoorthy@bhelrpt.co.in</p>
	<p>BOILER AUXILIARIES PLANT, Indira Gandhi Industrial Complex,</p>	
	<p>RANIPET- 632 406 (Tamil Nadu)</p>	

BHEL-BAP-OS- MAIN-SUP-ARC-2016-17

SECTION – XII BANK GUARANTEE

(Instructions to Fill the Bank Guarantee Format to be issued by BHEL)

Minimum base BG value of Rs.10.00 Lakhs should be provided by the vendor at the time of signing the contract.

1. Bank Guarantee shall be issued by any one of BHEL's Bankers or any Nationalized Bank. Please refer to List of BHEL's Bankers enclosed.
 - a. If it is not possible, then BG can be issued by a Scheduled Commercial Bank with the prior approval of BHEL.
 - b. BG from Co-operative Banks are not acceptable.
2. Pre-printed BG Form of BHEL only shall be used. Should not retype the format.
 - a. Only the relevant information like Supplier Name, BG Value, Contract No., Validity etc. shall be typed in the pre-printed form and executed by Bank.
 - b. Special adhesive stamp of the required value shall be affixed on the 1st page of the Form.
 - c. If Special Adhesive stamps are not available, then applicable stamp duty shall be paid at the Bank / Agency nominated by the concerned State Government to collect stamp duty, who" will affix their signature, date and seal in the first page of the BG Form clearly marking it as "SPECIALADHESIVE" & "STAMP DUTY".
 - d. Stamp Duty for the BG shall be at the rate as applicable in the State where the BG is executed.
 - e. Bank seal shall be affixed on the special adhesive stamp.
3. The executing officer of the Bank shall indicate his name, designation and power of attorney number/signing power number etc. on the BG.
 - a. Any correction / overwriting on the BG shall be duly authenticated under the Seal and signature of the executing officer of the Bank.
 - b. Each page of the BG shall be duly signed/initialed by the executing officer of the Bank and the last page is to be signed with full particulars under the seal of the Bank.
 - c. Fax number, e-mail Address, contact person, phone number and complete postal address shall be indicated in the covering letter of the BG from Bank.
4. The validity of the BG shall cover a period of 18 months (or such other period as per purchase Order, if otherwise specified) from the last date of dispatch as per Purchase Order or actual date of last dispatch under the Purchase Order, whichever is later.

- a. The BG shall have a claim period of 3 months. If no separate claim period is indicated in the BG, then the validity shall be 18 months (or such other period as per Purchase Order, if otherwise specified) plus 3 months.
 - b. No clause of the BHEL BG Form shall be altered, deleted or new clauses added by the issuing Bank under any circumstances. Bank Guarantees with altered/deleted/added clauses will not be accepted by BHEL under any circumstances.
 - c. If the issuing bank wants to add any additional clauses, it shall be intimated to BHEL well in advance with exact text of clause, which shall be subject to approval by BHEL Law department. Those clauses specifically accepted by BHEL- Law department can be added in the last page of the BG form and executed by Bank.
5. Bank Guarantee shall be forwarded by issuing Bank directly to AGM(OS)/BHEL/BAP/Ranipet-632406.
- a. If it is not directly forwarded to BHEL due to unavoidable circumstance, then the issuing bank shall sent a letter directly to BHEL conforming the issue of the BG enclosing a photocopy of the original BG
 - b. The bank guarantee should not be routed through Bank along with other dispatch documents under any circumstances.
6. In case of any extension of BG the same shall be executed on non-judicial stamp paper of the required value.
- a. Only the due date and claim period shall be extended
 - b. The extension should not result in alteration of any material facts of the BG.
7. Bank Guarantees executed as per the above instruction only shall be accepted at our end. Hence kindly ensure compliance with the above instructions for yearly processing of the bills and to avoid hold up of the bills

List of Bankers from whom Bank Guarantee is to be obtained.

Nationalised Bank					
1	Allahabad bank	13	State Bank of Hyderabad		Banking Corporation Limited
2	Andhra bank	14	Syndicate Bank	24	Standard Chartered Bank
3	Bank of Baroda	15	State Bank of Travancore	25	The Royal Bank of Scotland N.V.
4	Canara Bank	16	UCO Bank	26	J P Morgan
5	Corporation bank	17	Union Bank of India		Private bank
6	Central bank	18	United Bank of India	27	Axis Bank
7	Indian Bank	19	Vijaya Bank	28	The Federal Bank Limited
			Public Sector Banks	29	HDFC
8	Indian Oversea Bank	20	IDBI	30	Kotak Mahindra Bank
9	Oriental bank of Commerce		Foreign bank	31	ICICI
10	Punjab National Bank	21	CITI Bank N.A	32	Indusind Bank
11	Punjab & Sindh Bank	22	Deutsche Bank AG	33	Yes Bank
12	State Bank of India	23	The Hongkong and Shanghai		

Bank Guarantee No : Date..... Banker Name :

Bank Guarantee Value Rs.....Lakh(s)

FIRM CODE :

Please affix Rs.80/- Non Judicial
Stamp here

1. THIS DEED OF GUARANTEE made this.....day of.....20.....
by (hereinafter called the Bank) in favour of
M/s. BHARAT HEAVY ELECTRICALS LIMITED, BOILER AUXILIARIES PLANT,
RANIPET-632 406 having its Registered Head office at BHEL HOUSE, SIRI FORT, NEW DELHI,
Pin - 110 049.
2. WHEREAS M/s. BHARAT HEAVY ELECTRICALS LIMITED, hereinafter called the "COMPANY"
have placed Purchase Orders / Work Orders which are pending as on date and also future
Purchase Orders / Work Orders to be placed by the company upto the expiry of this Guarantee
(hereinafter called the "CONTRACT") for machining fabrication supply of pressure and non-
pressure parts with
..... (hereinafter called the
CONTRACTOR/SUPPLIER) and the said machining / fabrication / supply of pressure and non-
pressure parts shall be made from the supply of raw materials and components by the company
to the Contractor / Supplier in pursuance of the Contract(s) already placed but pending execution
as on date and the Contract(s) to be placed from time to time by the company on the contractor/
supplier.
3. AND WHEREAS one of the conditions for placing such Contract(s) is that contractor / supplier
shall provide the company with a Bank Guarantee to the extent of Rs.....
(Rupees.....) as a security for the raw
materials and components supplied and to be supplied in pursuance of the contract(s) already
placed and pending as on date/and the contract(s) to be placed from time to time upto the
expiry of this Guarantee and also for the satisfactory performance and completion of work/supply
and the terms and conditions of the said contract.
4. AND WHEREAS the contractor/supplier have approached the Bank and at their request and in
consideration of arrangements arrived at between the said contractor/supplier and the said
Bank. We, the Bank have agreed to give such guarantee as hereinafter mentioned in favour of
the aforesaid company.

Sign & Seal of issuing Bank

Bank Guarantee Value Rs.....Lakh(s)

5. NOW, THEREFORE, these present witness that we, the Bank by the hand of Branch Manager its lawfully and duly constituted attorney, do hereby undertake irrevocably and unconditionally to pay without demur to the aforesaid company a sum of Rs..... (Rupees.....) on demand being made by the said company and to keep the said company indemnified to the extent of Rs..... (Rupees.....) by virtue of this guarantee against any loss/damage caused to/suffered by the said company, by reason of any breach by the aforesaid contractor/supplier of any of the terms and conditions, stipulations or undertakings or any one of them contained in the said contract(s) and the tender documents if any attached there to and for the payment of any money payable by the said Contractor/Supplier to the said company under the terms and conditions of the said contract(s) (the decision regarding the breach, loss, damage or payment due being solely in the discretion of said company). We further undertake to pay the aforesaid amount in lumpsum on demand without demur or such part thereof as the company may demand from time to time, irrespective of the fact whether the said Contractor/Supplier admits or denies such claim or questions its correctness in any court, Tribunal Arbitrations proceedings or before any authority. The liability or obligation of Bank under this guarantee would not wait till the disputes have been decided by any Court or Tribunal or in the Arbitration proceedings or by any other authority. It shall not be necessary for the said company to proceed against the Contractor / Supplier before proceeding against the Bank and its Guarantee herein contained shall be enforceable notwithstanding any security, which the said company may have obtained or obtain from the Contractor / Supplier. Further any payment made by the Bank to the company under this guarantee shall be deemed to have been duly and lawfully made.
6. The liability under this guarantee is a continuing one covering all contracts, already placed and pending as on date to be placed upto the expiry of this Guarantee and should any loss or damage occur on account of the breach of the terms and conditions of the said Contract(s) by the Contractor/Supplier or should any surplus raw materials and components become due to the Company under Contract(s) and remain undelivered to company, the Bank shall indemnify the Company for loss/damage for the value of raw materials and components, to an extent of Rs..... (Rupees.....) and this is without prejudice to any other remedies which may be otherwise available to the company against the Contractor/Supplier by way of deduction from any sum due or any sum which at any time hereafter become due from the Contractor/Supplier under this or any other contracts.

Sign & Seal of issuing Bank

Bank Guarantee Value Rs.....Lakh(s)

7. THE AFORESAID Guarantee will remain in force and the Bank shall be liable under the same irrespective of any concession or time being granted by the said company to the Contractor/ Supplier in or for fulfilling the said contract(s) between Contractor/Supplier and the Company and the guarantee will remain in full force irrespective of any change of terms, conditions or stipulations or any variations in the terms of the said Contractor(s) and irrespective of whether notice of such change and/or variation is give to us or not and claim to receive such notice of any change and/or variation is given to us or not and claim to receive such notice of any change and /or variation of the terms and /or conditions of the said Contract(s) is hereby specially waived by us. Further, we shall not be released from this guarantee by any forbearance or the exercise or non exercise of any of the power or rights under the said contract(s) by the said company against the Contractor/Supplier irrespective of whether, notice of such forbearance enforcement or non enforcement of any powers or rights, modifications or changes made in the said contract(s) or concession shown to Contractor/Supplier by the Company is given to us or not.
8. THE GUARANTEE herein contained shall not be determined or affected by the liquidation or winding up or insolvency of or change in the constitution of the Contractor/Supplier and shall in all respects and for all purposes be binding and operative until all payments of all money due or that may hereafter become due to the said company are settled irrespective of any liability or obligation of the Contractor/Supplier under the said Contract(s).
9. A REFERENCE to this Bank Guarantee in the contract(s) placed already and pending as on date and to be placed upto the expiry of this Guarantee shall be sufficient to bind the Bank in respect of their liability under this Bank Guarantee and this Bank Guarantee shall be read as an integral part of the contract(s) already placed but pending as on date and to be placed upto the expiry of this Guarantee.
10. WE, THE BANK, further agree that the Guarantee herein contained shall remain in full force and effect during the period that would be taken for the performance of the said contract(s) and that it shall continue to be enforceable till all the dues of the company under or by virtue of the said contract(s) have been fully paid and its claims satisfied that the terms and conditions of the contract(s) have been fully and properly carried out by the said Contractor/Supplier and accordingly discharge the Guarantee, subject, however to the condition that the company shall have no rights under this guarantee unless a claim or demand in writing in respect of this guarantee has been preferred by the company with the Bank on or before/...../..... (including a claim period of 3 months). For the purpose of this clause any letter making the demand on the Bank by M/s.BHEL despatched by R.P.A.D. or by telegram or by FAX or by any electronic media addressed to the above mentioned address of the Bank shall be deemed to

Sign & Seal of issuing Bank

Bank Guarantee Value Rs.....Lakh(s)

be the claim/demand in writing referred to above irrespective of the fact as to whether or when the said letter reached the Bank, as also any letter containing the said demand or claim is lodged with the Bank personally.

11. Any CLAIM OR DISPUTE arising under the terms of this document shall only be enforced or settled in the Courts at Ranipet, Vellore District only.
12. THE BANK undertake not to revoke this Guarantee during the currency except with the previous consent of the Company in writing.
13. THE BANK declares that it has powers to issue this Guarantee and the undersigned has full powers to do so on its behalf under the power granted to him by the proper authorities of the Bank.
14. Notwithstanding anything contained herein before, our liability under this guarantee shall be limited to a sum of Rs..... and stand completely extinguished and discharged if no demand or claim is made upon us in writing on or before/...../..... (including a claim period of 3 months).

DATE THIS..... DAY OF20

Seal of the Bank

Signature of the Bank Manager