

660MW FULL LAMINATION
FOR HALF SEGMENT CONSIDER SAME LAMINATION DIVIDED IN MIDDLE.

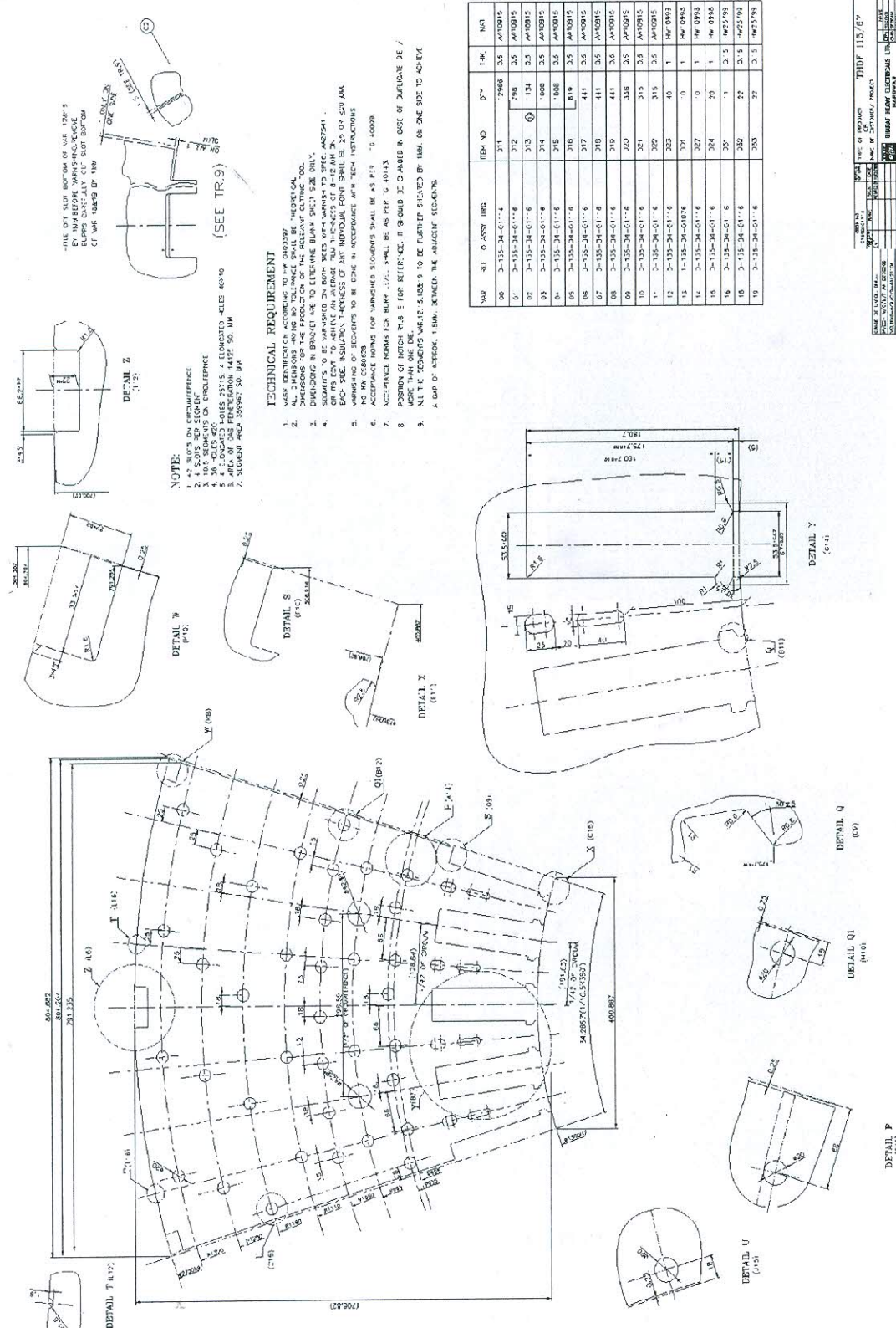


Figure 6

3. Specification for lifting and transporting mechanism for 660MW laminations

Description: After the laminations are assembled on a assembly table to a desired stack height, the mandrel table is lowered and entire stack is lifted and transported to main assembly area by crane using the 'lifting pins'. In main assembly area, transported stacks are put one above another to the required height of generator.

SR. No.	DESCRIPTION	BHEL Specification	Vendor Specification/Remark
1	Scope	To design, manufacture and supply lifting plate and lifting pins including chains and hooks similar to figure shown below. The figure is representative and designer is free to evolve another concept.	
2	Supporting Weight	The lifting pin/mechanism should be able to support entire weight of assembled laminations and should make sure that the laminations do not become loose during transportation. The sliders should be able to 'slide in' while unloading the stack and 'slide out' while loading the stack.	
3	No. of lifting pins	If the concept of lifting pins is used, 21 large diameter lifting pins and 11 small diameter lifting pins will be required.	
4	Material	a. Lifting Plate: MS b. Lifting Pins: As specified for mandrel.	
5	Surface Finish	a. Lifting Plate: Vendor to specify b. Lifting Pins: High grade stainless steel finish	

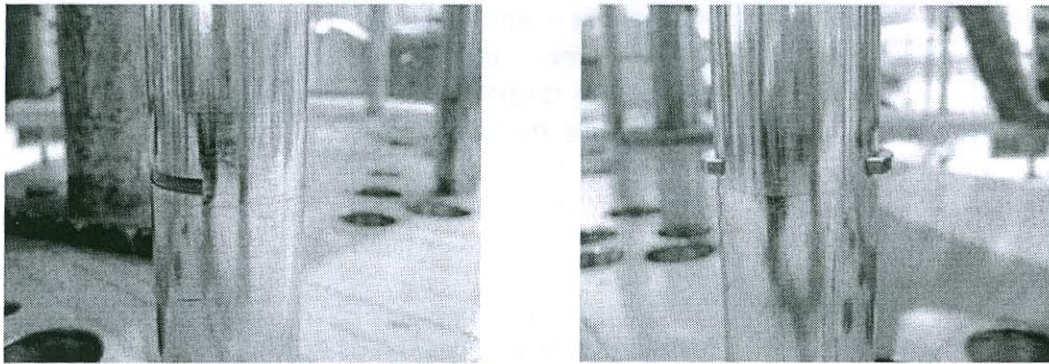
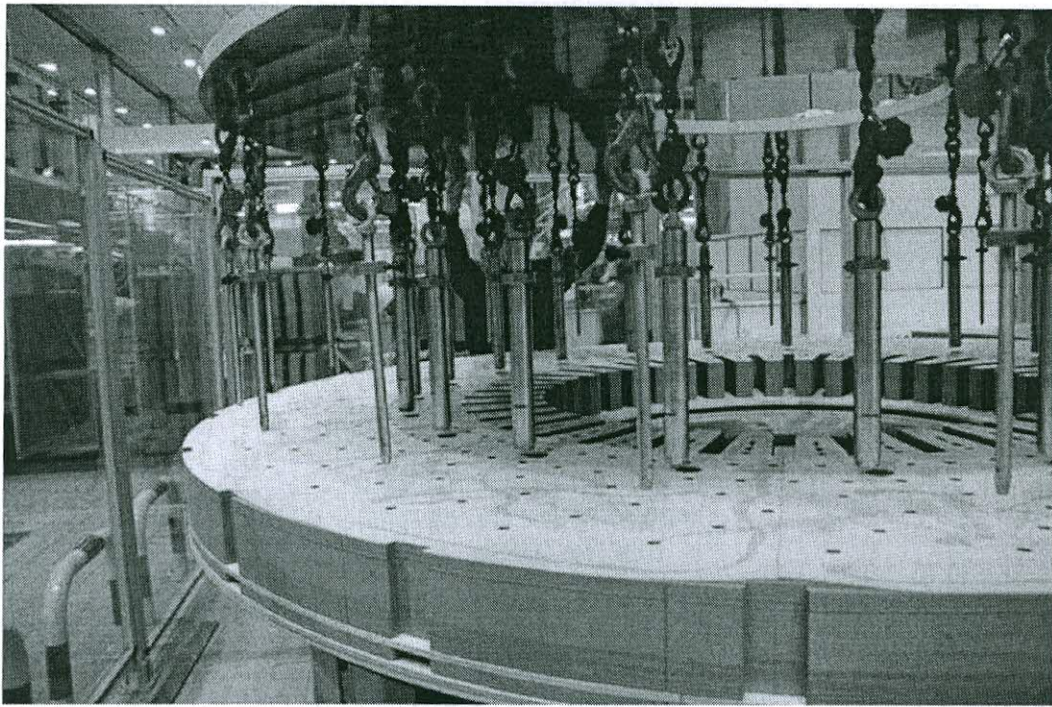


Figure 7

General Conditions:

1. Only non-contact sensing devices to be used.
2. All drawings and component make to be approved by BHEL before manufacture.
3. BHEL will have right to carry out stage-wise inspection of all components during design, manufacturing and dispatch phases.
4. Training: BHEL representatives will be trained at vendor's works for operation and maintenance of equipment.
5. Annual Preventive Maintenance schedule shall be provided by vendor before dispatch of the equipment.
6. Documentation: Vendor shall provide two sets of hardcopy and softcopy manuals (operation & maintenance) before dispatch of the equipment.
7. Any Intellectual Property Right (IPR) including patents copyrights or design etc. arising during or after development of this order shall be property of BHEL and vendor shall not apply or claim for any IPR arising during development of this order.