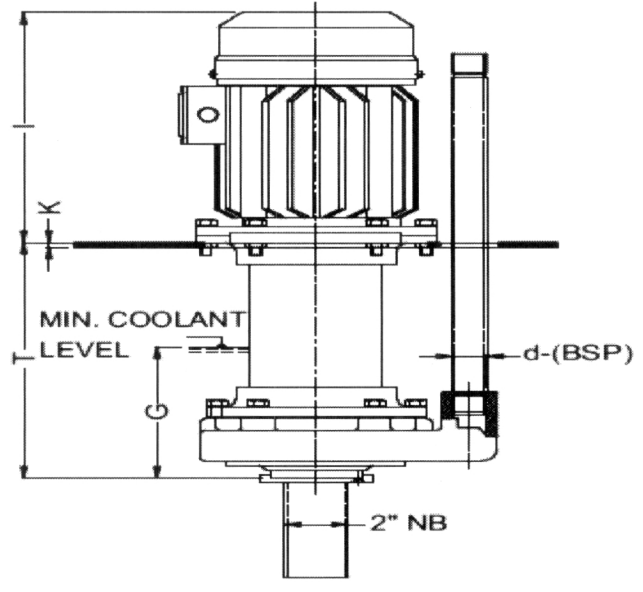
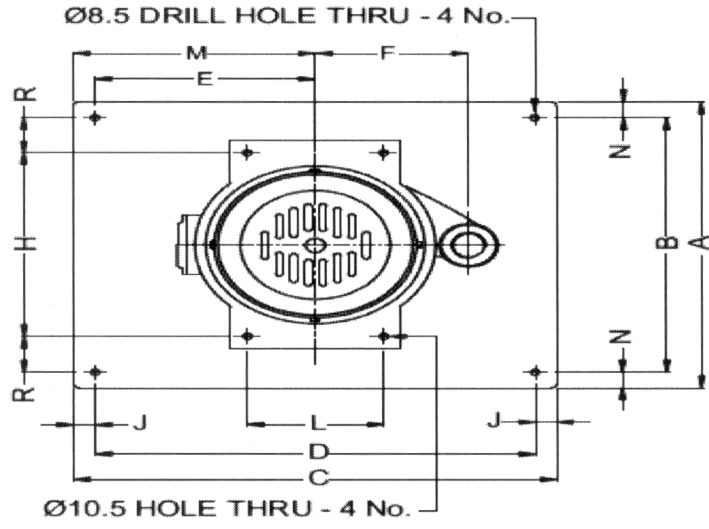


### ANNEXURE-I

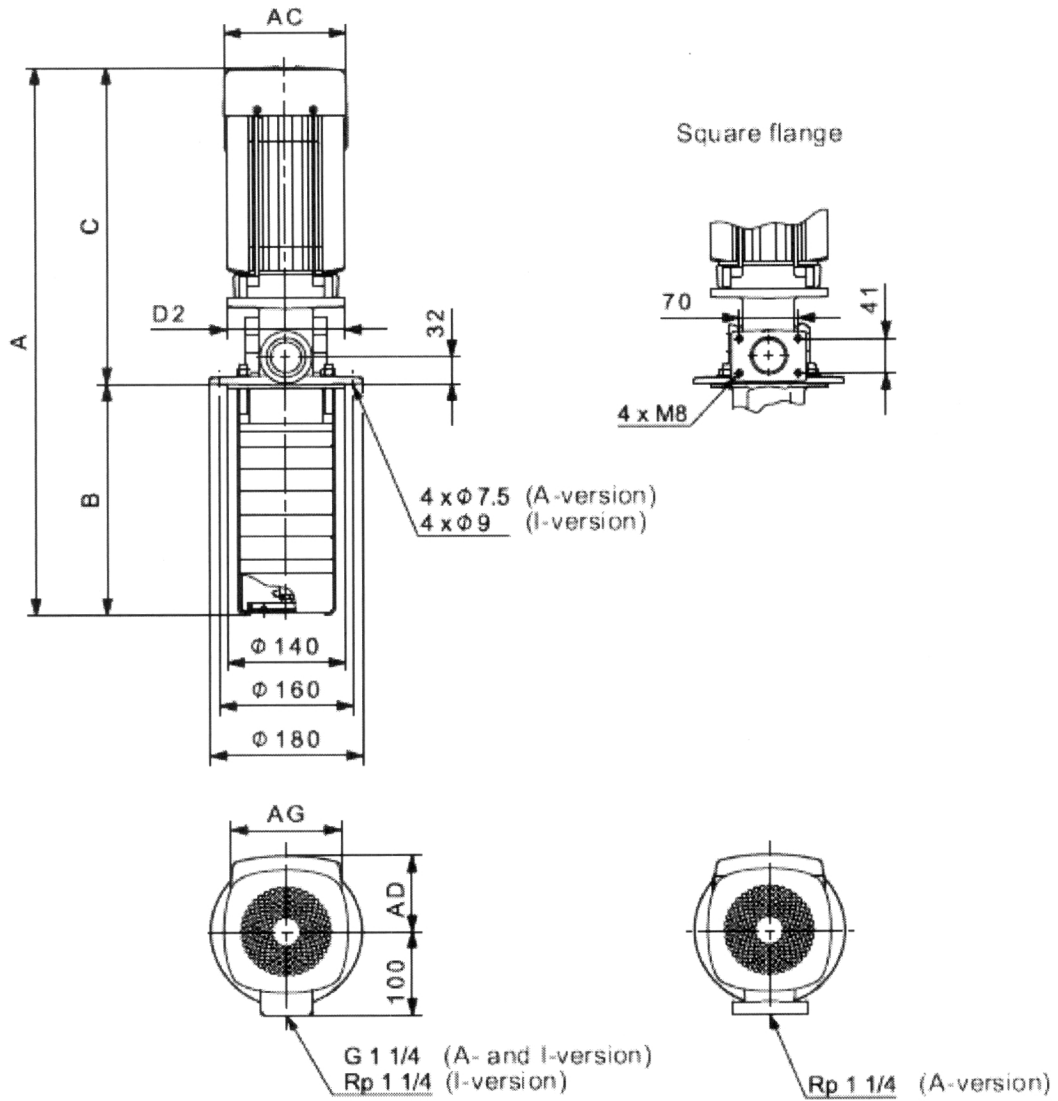
Material Codes: HY8452386605, HY8452386613, HY8452386621



A	B	C	D	E	F	G	H	I	J	K	L	M	N	R	T
370	330	450	410	178	143	170	238	305	20	6	127	225	20	46	305

### ANNEXURE-III

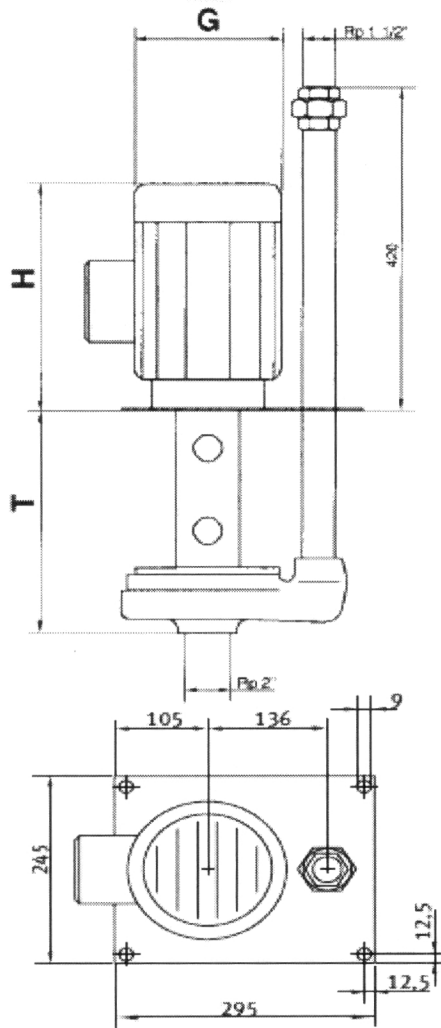
Material Codes: HY8452386583



A	B	C	AC	D2	AD	AG
1152	718	434	178	140	110	162

## ANNEXURE-V

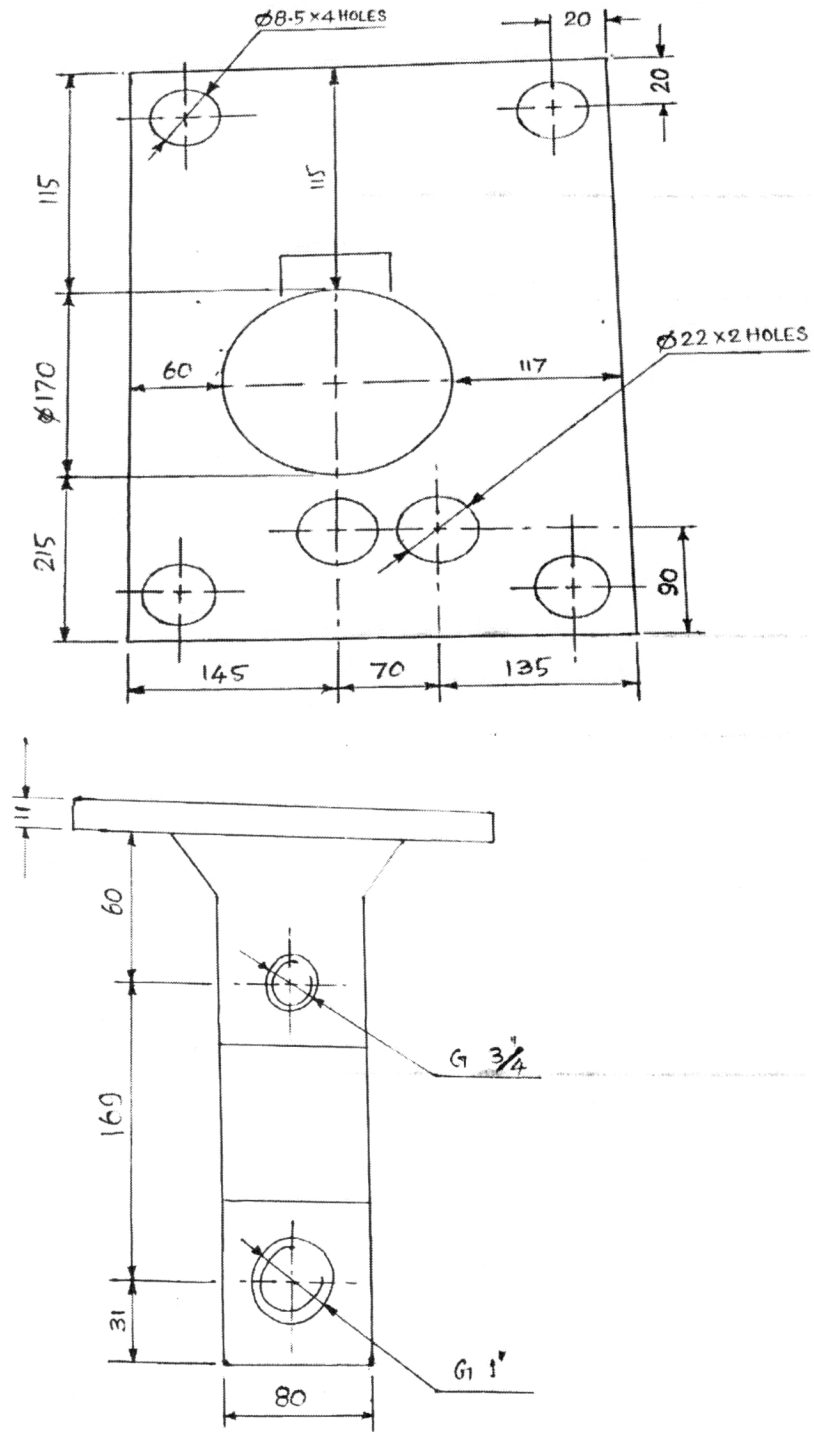
Material Codes: HY8452466536, HY8452466544, HY8452466552, HY8452466560, HY8452466579



M. Code	T(mm)	H(mm)	G(mm)
HY8452466536	781	350	200
HY8452466544	285	320	180
HY8452466552	533	320	180
HY8452466560	285	350	200
HY8452466579	330	290	180

ANNEXURE-VII

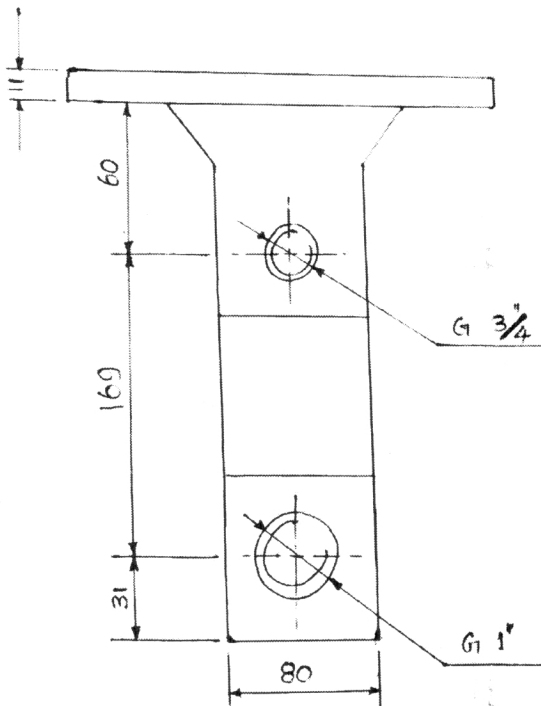
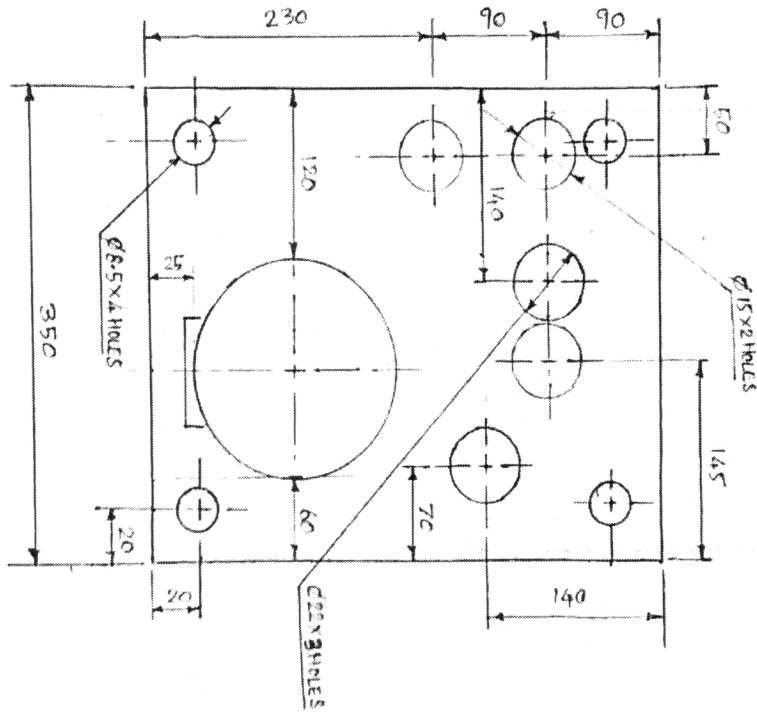
Material Codes: HY8452466595



All dimensions are in mm and directions of holes are w.r.t to Motor Terminal Box

# ANNEXURE-IX

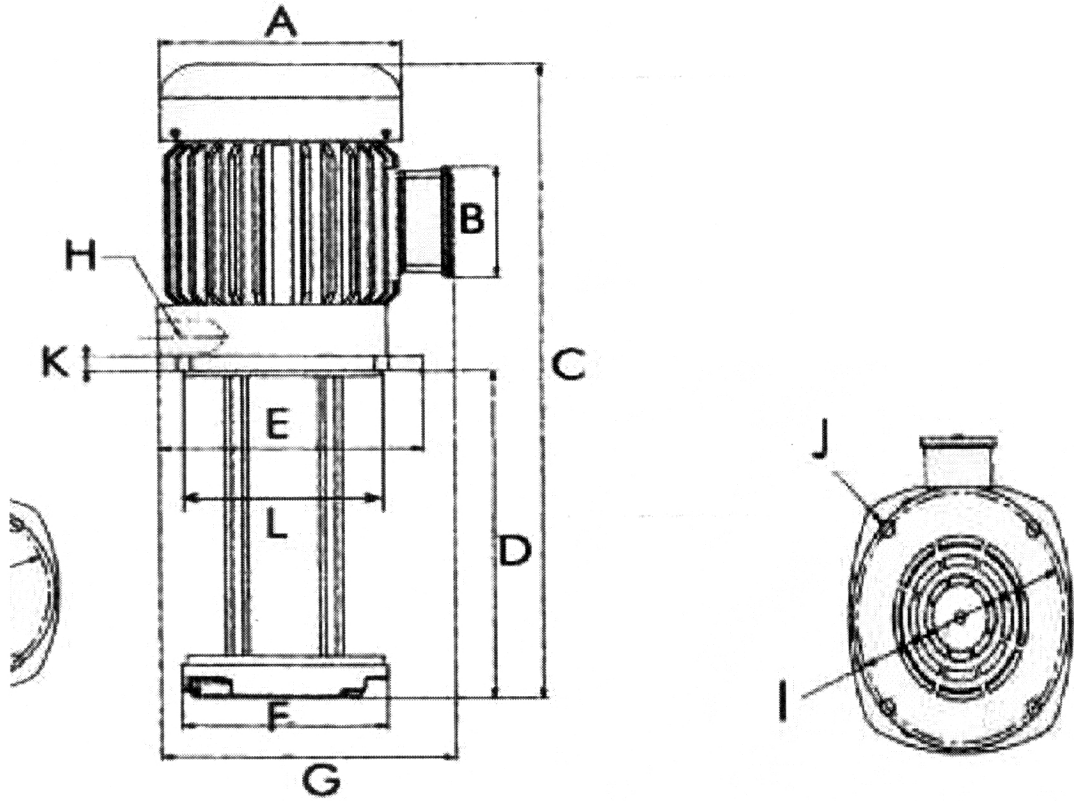
Material Codes: HY8452466617



All dimensions are in mm and directions of holes are w.r.t to Motor Terminal Box

## ANNEXURE-XI

Material Codes: HY8452406517

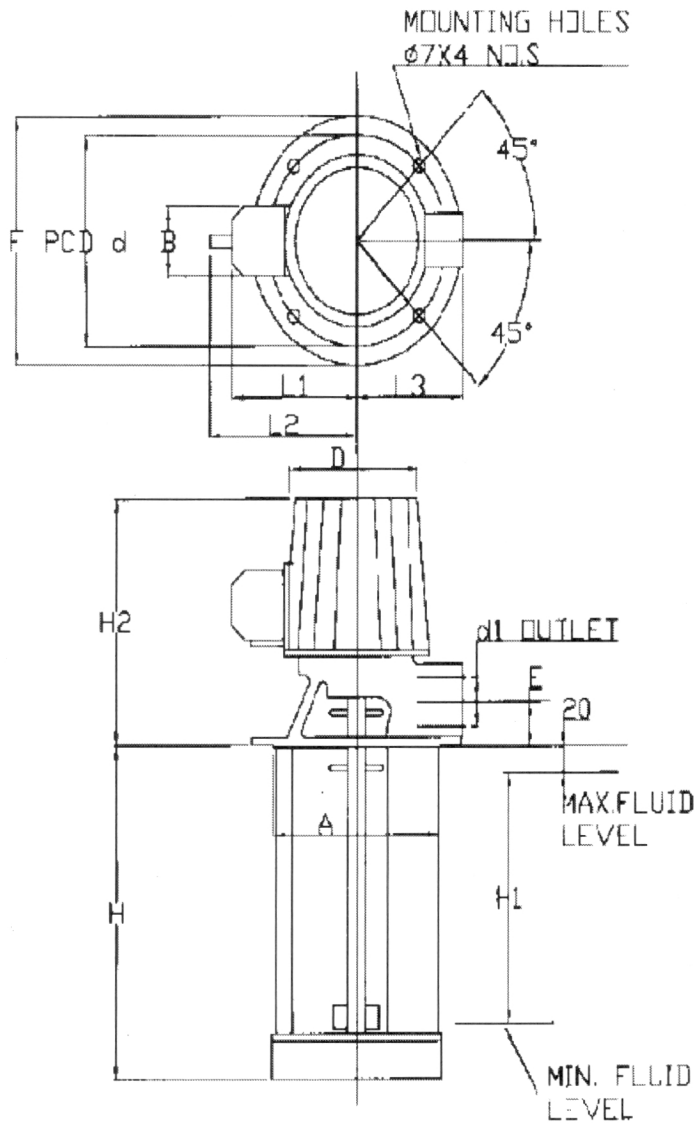


A	B	C	D	E	F
178	94	650	380	212	152

G	H	I	J	K	L
225	1" PT	180	11	13	155

**ANNEXURE-XIII**

Material Codes: HY8452376510



H1 MAX	H2 MAX	A	B MAX	D MAX	d	d1(BSP)
80	160	100	72	105	115	G 3/4"

E	F	L1 MAX	L2	L3
30	130	130	155	70