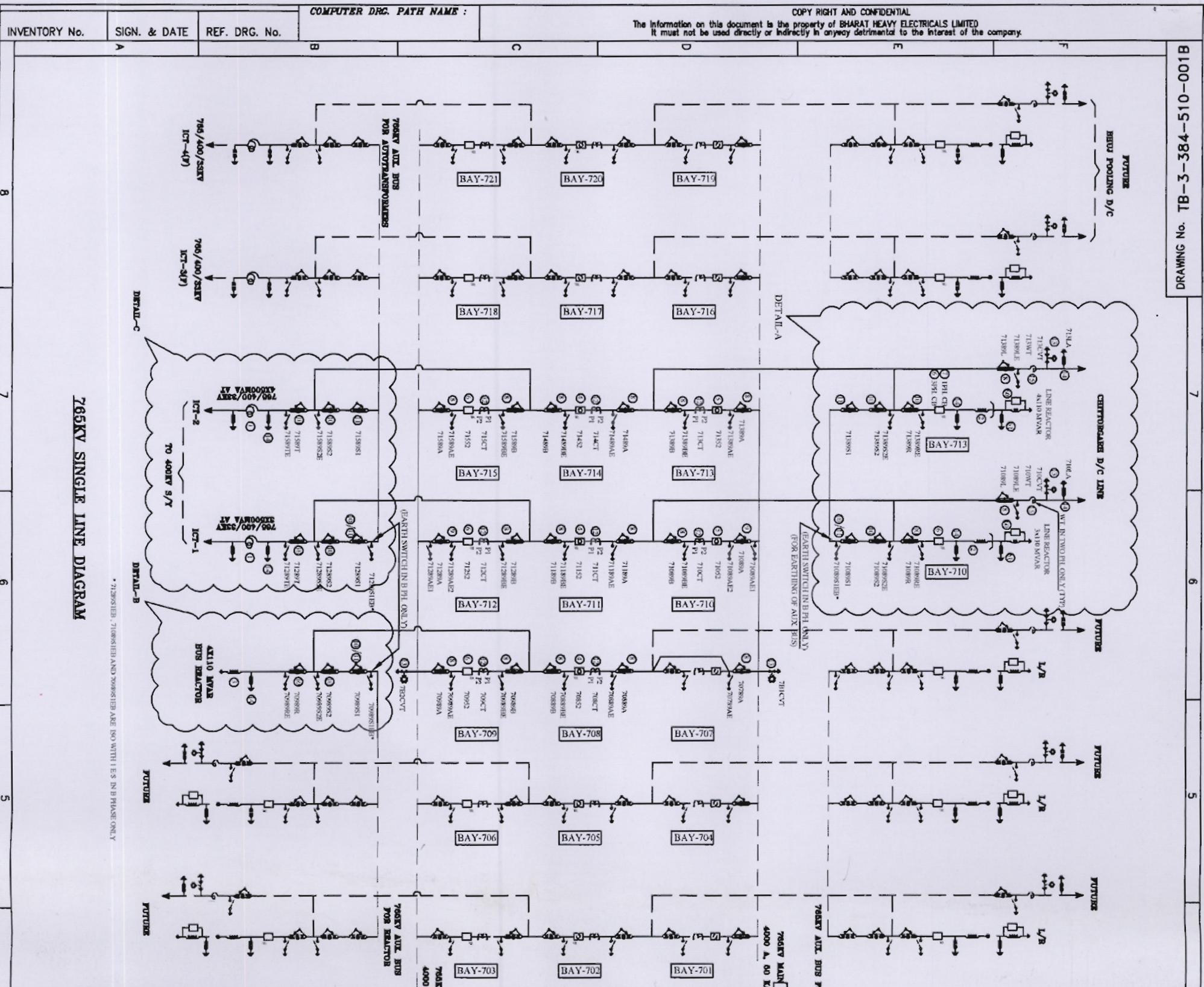


DRAWING No. TB-3-384-510-001B

FIRST ANGLE PROJECTION (ALL DIMENSIONS ARE IN MM)

COPY RIGHT AND CONFIDENTIAL
The information on this document is the property of BHARAT HEAVY ELECTRICALS LIMITED
It must not be used directly or indirectly in anyway detrimental to the interest of the company.



765KV SINGLE LINE DIAGRAM

* 71295101, 71295102 AND 7099101 ARE IN WITH I.E.S. IN PHASE ONLY.

NOA NO. : CC-CS/483-WR2/SS-2903/11/58/NOA-1&2/5507 & 5508 DT. 01.09.15			
ADDITIONAL INFORMATION W.O.No. 85003 STATUS OF DRAWING CONTRACT DISTRIBUTION OF PRINTS		POWER GRID CORPORATION OF INDIA LIMITED SUBSTATION PACKAGE-SS02 FOR CONSTRUCTION OF 765/400/220KV BANASKANTHA S/S & EXT. OF 400KV SANKHARIGETCO S/S UNDER GREEN ENERGY CORRIDOR 1ST PART-B(PART-1)	
REV.	DATE	ALTERED BY	CHKD BY
01	20.10.2015	SK/AA	AS/RS
ZONE REVISED AS PER PGCL COMMENT MADE LETTER DATED 30 OCT 2015			
SINGLE LINE DIAGRAM FOR 765/400/220KV BANASKANTHA S/S.		SHEET NO. / DRAWING NO. TB-3-384-510-001B 01	

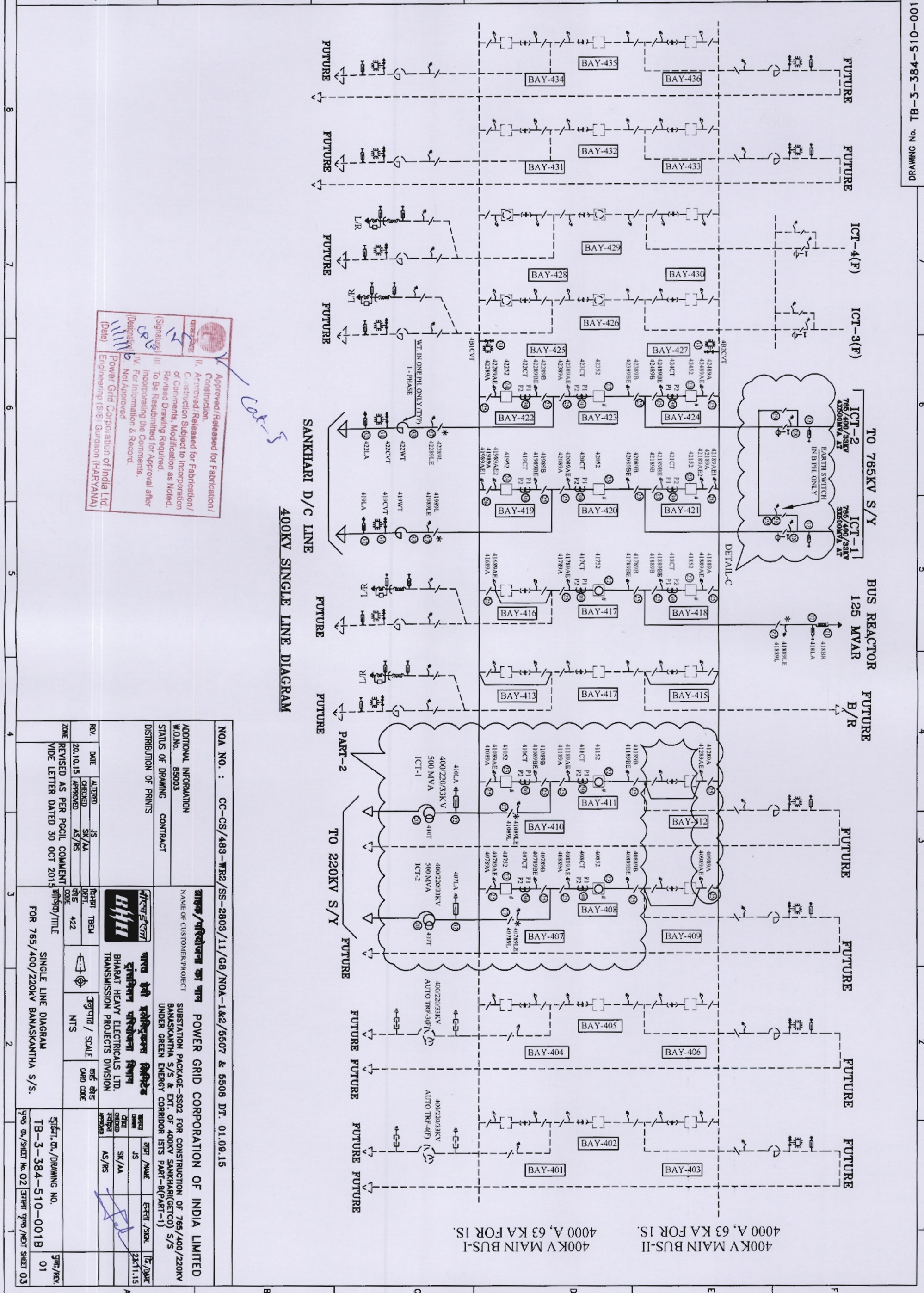
Approved/Released for Fabrication/
 Construction.
 Approved/Released for Fabrication/
 Construction Subject to Incorporation/
 of Comments, Modification as Noted.
 Revised Drawing Required
 To Be Resubmitted for Approval after
 Incorporating the Comments.
 For Information & Record.
 Not Approved

Power Grid Corporation of India Ltd.
 Engineering (S/S) Gurgaon (HARYANA)

B100-015-483-3-B1 DRAWING No.

COPY RIGHT AND CONFIDENTIAL
The information on this document is the property of BHARAT HEAVY ELECTRICALS LIMITED
It must not be used directly or indirectly in anyway detrimental to the interest of the company.

INVENTORY No.	SIGN. & DATE	REF. DRG. No.	COMPUTER DRG. PATH NAME :
---------------	--------------	---------------	---------------------------



Approved/Released for Fabrication/Construction.
I. Approved/Released for Fabrication/Construction.
II. Approved/Released for Fabrication/Construction Subject to Incorporation of Comments, Modification as Noted, Revised Drawing Required.
III. To Be Resubmitted for Approval after incorporating the Comments.
IV. For Information & Record.
Not Approved

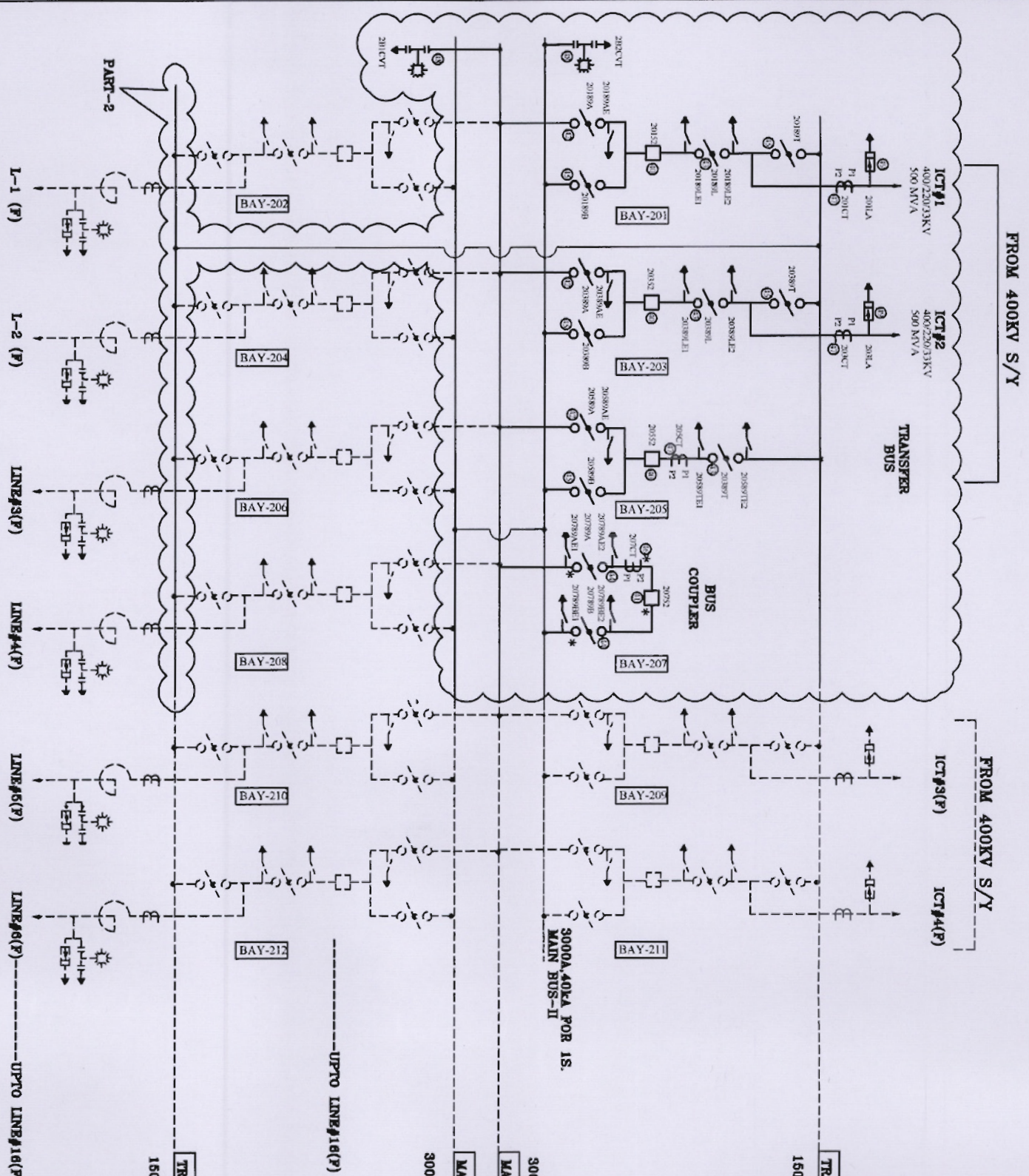
Power Grid Corporation of India Ltd.
Engineering (S/S) Section (HARPYANA)

Signature: [Signature]
Date: [Date]

NOA NO. : CC-CS/483-WR2/SS-2803/11/G8/NOA-1&2/5507 & 5508 DT. 01.08.15		POWER GRID CORPORATION OF INDIA LIMITED	
ADDITIONAL INFORMATION W.O.No. 85003		SUBSTATION PACKAGE-SS02 FOR CONSTRUCTION OF 765/400/220KV BANASKANTHA S/S & EXT. OF 400KV SANKHARI(GECCO) S/S UNDER GREEN ENERGY CORRIDOR IS15 PART-8(PART-1)	
STATUS OF DRAWING CONTRACT		DISTRIBUTION OF PRINTS	
REV.	DATE	ALTERED	BY
20.10.15	20.10.15	CHECKED	SK/AA
		APPROVED	AS/RS
ZONE		REVISED AS PER PGCIL COMMENT	
VIDE LETTER DATED 30 OCT 2014		FOR 765/400/220KV BANASKANTHA S/S.	
SINGLE LINE DIAGRAM		SANKHARI D/C LINE	
FOR 765/400/220KV BANASKANTHA S/S.		SANKHARI D/C LINE	
SHEET NO. / DRAWING NO.		SHEET NO. / DRAWING NO.	
TB-3-384-510-001B		TB-3-384-510-001B	
SHEET NO. / NEXT SHEET		SHEET NO. / NEXT SHEET	
02		03	
DATE		DATE	
22.11.15		22.11.15	
SIGNED		SIGNED	
[Signature]		[Signature]	

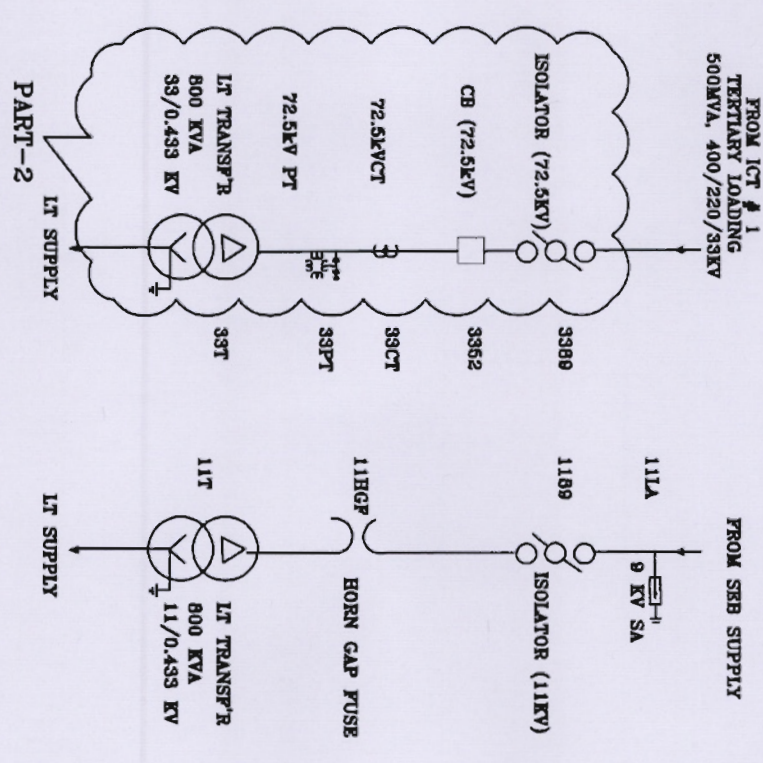
COPY RIGHT AND CONFIDENTIAL
The information on this document is the property of BHARAT HEAVY ELECTRICALS LIMITED
It must not be used directly or indirectly in anyway detrimental to the interest of the company.

INVENTORY No. SIGN. & DATE REF. DRG. No. COMPUTER DRG. PATH NAME :



Approved/Released for Fabrication/
Construction.
II. Approved/Released for Fabrication/
Construction Subject to Incorporation/
of Comments, Modification as Noted.
Revised Drawing Required.
III. To Be Resubmitted for Approval after
Incorporating the Comments.
IV. For Information & Record
Not Approved

Power Grid Corporation of India Ltd
Engineering (S/S) Gurgaon (HARYANA)



NOA NO. : CC-CS/483-WR2/SS-2803/11/G8/NOA-1&2/5507 & 5508 DT. 01.09.15

POWER GRID CORPORATION OF INDIA LIMITED
SUBSTATION PACKAGE-SS02 FOR CONSTRUCTION OF 765/400/220KV
BANASKANTHA S/S & EXT. OF 400KV SANKHARIGETCO S/S
UNDER GREEN ENERGY CORRIDOR ISTS PART-B(PART-1)

REV.	DATE	ALTERED BY	DM	CHECKED BY	SK/AA	AS/RS	ZONE
	20.10.20	APPROVED	AS/RS				
		REVISED	AS PER PCCIL COMMENT				
			WIDE LETTER DATED 30 OCT 2015				

REVISED AS PER PCCIL COMMENT	DATE	ALTERED BY	DM
WIDE LETTER DATED 30 OCT 2015	20.10.20	APPROVED	AS/RS

REVISED AS PER PCCIL COMMENT	DATE	ALTERED BY	DM
WIDE LETTER DATED 30 OCT 2015	20.10.20	APPROVED	AS/RS

REVISED AS PER PCCIL COMMENT	DATE	ALTERED BY	DM
WIDE LETTER DATED 30 OCT 2015	20.10.20	APPROVED	AS/RS

REVISED AS PER PCCIL COMMENT	DATE	ALTERED BY	DM
WIDE LETTER DATED 30 OCT 2015	20.10.20	APPROVED	AS/RS

SINGLE LINE DIAGRAM
FOR 765/400/220KV BANASKANTHA S/S.

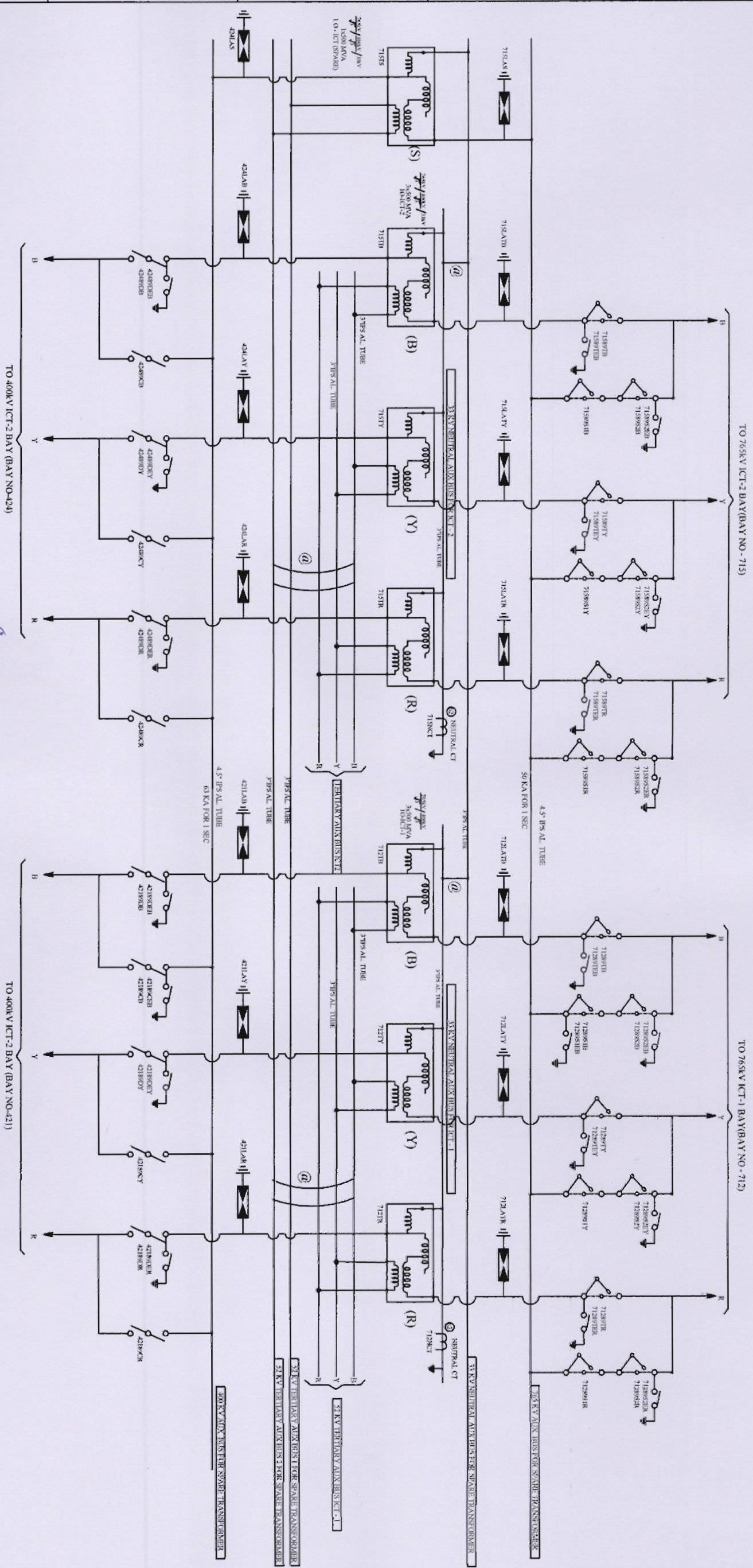
NOA NO. : CC-CS/483-WR2/SS-2803/11/G8/NOA-1&2/5507 & 5508 DT. 01.09.15

POWER GRID CORPORATION OF INDIA LIMITED

SUBSTATION PACKAGE-SS02 FOR CONSTRUCTION OF 765/400/220KV BANASKANTHA S/S & EXT. OF 400KV SANKHARIGETCO S/S UNDER GREEN ENERGY CORRIDOR ISTS PART-B(PART-1)

NOA NO. : CC-CS/483-WR2/SS-2803/11/G8/NOA-1&2/5507 & 5508 DT. 01.09.15

COPY RIGHT AND CONFIDENTIAL
The information on this document is the property of BHARAT HEAVY ELECTRICALS LIMITED
It must not be used directly or indirectly in anyway detrimental to the interest of the company.



DETAIL-C
(ARRANGEMENT OF 765/400KV ICT AND AUX BUS)

Approved for Fabrication/
Approved for Installation/
Approved for Commissioning/
Approved for Handover/
Approved for Record

Power Grid Corporation of India Ltd.
Engineering (S/S) Gurgaon (HARYANA)

NOA NO. : CC-CS/483-WR2/SS-2803/11/G8/NOA-142/5507 & 5508 DT. 01.09.15		POWER GRID CORPORATION OF INDIA LIMITED	
ADDITIONAL INFORMATION W.O.No. 85003		SUBSTATION PACKAGE-SS02 FOR CONSTRUCTION OF 765/400/220KV BANASKANTHA S/S & EXT. OF 400KV SANKHAR(GETTO) S/S UNDER GREEN ENERGY CORRIDOR ISTS PART-B(PART-1)	
STATUS OF DRAWING CONTRACT		NAME OF CUSTOMER/PROJECT	
DISTRIBUTION OF PRINTS		BHARAT HEAVY ELECTRICALS LTD. TRANSMISSION PROJECTS DIVISION	
REV.	DATE	ALTERED BY	CHKD BY
	20.10.2015	SK/AA	AS/RS
ZONE REVISION AS PER PGCL COMMENT WIDE LETTER DATED 30 OCT 2015			
SINGLE LINE DIAGRAM FOR 765/400/220KV BANASKANTHA S/S.		SCALE 1:1	
FOR 765/400/220KV BANASKANTHA S/S.		DATE 23.11.15	
DRAWING NO. TB-3-384-510-001B		SHEET NO. 01	
SHEET NO. 05		NEXT SHEET 06	

INVENTORY No. SIGN. & DATE REF. DRG. No. COMPUTER DRG. PATH NAME :

B100-015-483-C-BL DRAWING No. 7

BILL OF QTY. FOR 765KV MAIN EQUIPMENTS: *5014 for 150*

SL. NO	DESCRIPTION	RATING	QTY (PART-1)	QTY (PART-2)	SYMBOL	SCOPE OF SUPPLY	LEGEND
1	500 MVA (1-PH) AUTOTRANSFORMER	765/400/220KV	7			PGCIL	T
2	110MVAR LINE REACTOR (1-PH) WITH NGR(550 Ohm)	765KV	7			PGCIL	LNNGR
3	110MVAR BUS REACTOR (1-PH)	765KV	4			PGCIL	BR
4	SF6 CIRCUIT BREAKER WITH CR. WITH CSD (3-PH)	3150A	3			PGCIL	52
5	SF6 CIRCUIT BREAKER WITH CR. WITHOUT CSD (3-PH)	3150A	2			PGCIL	52
6	SF6 CIRCUIT BREAKER WITHOUT CR. WITH CSD (3-PH)	3150A	5			PGCIL	52
7	SF6 CIRCUIT BREAKER WITHOUT CR. WITH CSD (1-PH)	3150A	1			PGCIL	52
8	ISOLATOR WITH ONE ESW (3 PH) VERTICAL KNEE TYPE	3150A	17			BHEL	89/89E
9	ISOLATOR WITH TWO ESW (3 PH) VERTICAL KNEE TYPE	3150A	2			BHEL	89/89E1/89E2
10	ISOLATOR WITH ONE ESW (1 PH) VERTICAL KNEE TYPE	2000A	33			BHEL	89/89E1
11	ISOLATOR WITHOUT ESW (1 PH) VERTICAL KNEE TYPE	2000A	12			BHEL	89
12	CURRENT TRANSFORMER (1 PH) WITH 120% EXTENDED CURRENT RATING	3000A	24			BHEL	CT
13	CVT (1 PH)	8800pF	12			BHEL	CVT
14	SURGE ARRESTER (1 PH)	624 KV	24			BHEL	LA
15	WAVE TRAP (1 PH) PEDESTAL TYPE	1mH, 3150A	04			BHEL	WT

BILL OF QTY. FOR 400KV MAIN EQUIPMENTS: *63 units for 150*

SL. NO	DESCRIPTION	RATING	QTY (PART-1)	QTY (PART-2)	SYMBOL	SCOPE OF SUPPLY	LEGEND
20	500MVA (3-PH) AUTOTRANSFORMER	400/220/33KV	0	2		BHEL	T
21	125MVAR BUS REACTOR (3-PH)	420 KV	1	0		BHEL	BR
22	SF6 CIRCUIT BREAKER WITH CR. WITH CSD (3-PH)	3150A	1	2		BHEL	52
23	SF6 CIRCUIT BREAKER WITHOUT CR. WITH CSD (3-PH)	3150A	5	2		BHEL	52
24	SF6 CIRCUIT BREAKER WITHOUT CR. WITHOUT CSD (3-PH)	3150A	2	0		BHEL	52
25	ISOLATOR WITH ONE ESW (3 PH) DOUBLE BREAK TYPE	3150A	15	10		BHEL	89/89E
26	ISOLATOR WITH TWO ESW (3 PH) DOUBLE BREAK TYPE	3150A	2	0		BHEL	89/89E1/89E2
27	ISOLATOR WITH ONE ESW (3 PH) DOUBLE BREAK TYPE	2000A	3	2		BHEL	89/89E1
28	ISOLATOR WITH ONE ESW (1 PH) DOUBLE BREAK TYPE	3150A	7	0		BHEL	89/89E1
29	ISOLATOR WITHOUT ESW (1 PH) DOUBLE BREAK TYPE	3150A	5	0		BHEL	89
30	CURRENT TRANSFORMER (1 PH) WITH 120% EXTENDED CURRENT RATING	3000A	24	12		BHEL	CT
31	CVT (1 PH)	4400pF	12	0		BHEL	CVT
32	SURGE ARRESTER (1 PH)	336 KV	16	6		BHEL	LA
33	WAVE TRAP (1 PH) PEDESTAL TYPE	0.5mH, 2000A	2	0		BHEL	WT

BILL OF QTY. FOR 220KV MAIN EQUIPMENTS:

SL. NO	DESCRIPTION	RATING	QTY (PART-2)	SYMBOL	SCOPE OF SUPPLY	LEGEND
40	SF6 CIRCUIT BREAKER (3-PH)	1600A	3		BHEL	52
41	SF6 CIRCUIT BREAKER (3-PH)	2500A	1		BHEL	52
42	ISOLATOR WITH ONE ESW (3 PH) DOUBLE BREAK TYPE	1600A	3		BHEL	89/89E
43	ISOLATOR WITH TWO ESW (3 PH) DOUBLE BREAK TYPE	1600A	3		BHEL	89/89E1/89E2
44	ISOLATOR WITH TWO ESW (3 PH) DOUBLE BREAK TYPE	2500A	2		BHEL	89/89E1
45	TANDUM ISOLATOR WITHOUT ESW/PH/DOUBLE BREAK TYPE	1600A	5		BHEL	89
46	CURRENT TRANSFORMER (1 PH) WITH 150% EXTENDED CURRENT RATING	1600A	3		BHEL	CT
47	CURRENT TRANSFORMER (1 PH) WITH 120% EXTENDED CURRENT RATING	1600A	9		BHEL	CT
48	CVT (1 PH)	4400pF	6		BHEL	CVT
49	SURGE ARRESTER (1 PH)	216 KV	6		BHEL	LA

BILL OF QTY. FOR 132 & 33KV MAIN EQUIPMENTS:

SL. NO	DESCRIPTION	RATING	QTY (NO)	SYMBOL	SCOPE OF SUPPLY	LEGEND
60	SF6 CIRCUIT BREAKER FOR NGR BYPASS (4-PH)	132KV, 1250A	2		BHEL	52
61	SURGE ARRESTER (1 PH)	120 KV, 10 KA 5 KJ/KV	2		PGCIL	LA
62	NEUTRAL CT (1 PH) WITH 120% EXTENDED CURRENT RATING	33KV	5		PGCIL	CT

APPROVED/RELEASED FOR FABRICATION/CONSTRUCTION.
 I. Approved/Released for Fabrication/Construction.
 II. Approved/Released for Fabrication/Construction Subject to Incorporation of Comments. Modification as Noted. Revised Drawing Required.
 III. To Be Resubmitted for Approval after Incorporating the Comments.
 IV. For Information & Record.
 Not Approved.
 (Designing) _____
 (Date) _____

NOA NO. : CC-CS/483-WR2/SS-2803/11/G8/NOA-1&2/5507 & 5508 DT. 01.09.15

POWER GRID CORPORATION OF INDIA LIMITED

SUBSTATION PACKAGE-SS02 FOR CONSTRUCTION OF 765/400/220KV BANASKANTHA S/S & EXT. OF 400KV SANHAJIBGETTO S/S UNDER GREEN ENERGY CORRIDOR ISTS PART-B(PART-1)

DATE: 20.10.15

REVISION: REVISED AS PER PGCIL COMMENT WIDE LETTER DATED 30 OCT 2015

SCALE: 1:1

TITLE: SINGLE LINE DIAGRAM FOR 765/400/220KV BANASKANTHA S/S.

DRAWING NO. TB-3-384-510-001B

DATE: 23.11.15

SYSTEM PARAMETERS

DESCRIPTION	765 kV	400 kV	220 kV	132 kV	66 kV	11 kV
1) HIGHEST SYSTEM VOLTAGE	800kV (r.m.s.)	420kV (r.m.s.)	245kV (r.m.s.)	145kV (r.m.s.)	72.5kV (r.m.s.)	12kV (r.m.s.)
2) SYSTEM OPERATING VOLTAGE	765kV	400kV	220kV	132kV	66kV	11kV
3) P.F. WITHSTAND VOLTAGE	830kV (r.m.s.)	630kV (r.m.s.)	460kV (r.m.s.) dry and wet	275kV (r.m.s.) dry and wet	140kV (r.m.s.) dry and wet	28kV (r.m.s.) dry and wet
4) LIGHTING IMPULSE WITHSTAND VOLTAGE	2100 kVP	1550 kVP	1050 kVP	650 kVP	325 kVP	75 kVP
5) SWITCHING IMPULSE WITHSTAND VOLTAGE	1550 kVP	1050 kVP	---	---	---	---
6) SYSTEM FAULT LEVEL	50KA FOR 1 Sec	63KA FOR 1 Sec	40KA FOR 1 Sec	31.5KA FOR 1 Sec	31.5KA FOR 1 Sec	25KA FOR 1 Sec
7) CREEPAGE	25MM/KV	25MM/KV	25MM/KV	25MM/KV	25MM/KV	25MM/KV
8) SYSTEM EARTHING	EFFECTIVELY	EFFECTIVELY	EFFECTIVELY	EFFECTIVELY	EFFECTIVELY	EFFECTIVELY

800KV, 3000A, CT

Core No.	Current Ratio	Accuracy Class	Output Burden VA	Min kPV (V)	Max RCT In Ohms	Max Im at kPV (mA)	Purpose
1	3000-2000-500 / 1	TPS	-	3000-2000-500	15-10-2.5	20mA on 3000V/Tap 30mA on 2000V/Tap 120mA on 500V/Tap	BUS DIFF. CHECK
2	3000-2000-500 / 1	TPS	-	3000-2000-500	15-10-2.5	20mA on 3000V/Tap 30mA on 2000V/Tap 120mA on 500V/Tap	BUS DIFF. MAIN
3	3000-2000-500 / 1	0.2S	20	-	-	-	METERING
4	3000-2000-500 / 1	0.2S	20	-	-	-	METERING
5	3000-2000-500 / 1	TPS	-	3000-2000-500	15-10-2.5	20mA on 3000V/Tap 30mA on 2000V/Tap 120mA on 500V/Tap	TRANS. BACKUP/LINE BACKUP PROTIN.
6	3000-2000-500 / 1	TPS	-	3000-2000-500	15-10-2.5	20mA on 3000V/Tap 30mA on 2000V/Tap 120mA on 500V/Tap	LINE PROTIN /LBB PROTIN

All protection class shall be accuracy class TPS as per IEC 60044-6. Metering cores shall be accuracy class 0.2S as per IEC. 60044-1

400KV, 3000A, CT

Core No.	Current Ratio	Accuracy Class	Output Burden VA	Min kPV (V)	Max RCT In Ohms	Max Im at kPV (mA)	Purpose
1	3000-2000-500 / 1	TPS	-	3000-2000-500	15-10-2.5	20mA on 3000V/Tap 30mA on 2000V/Tap 120mA on 500V/Tap	BUS DIFF. CHECK
2	3000-2000-500 / 1	TPS	-	3000-2000-500	15-10-2.5	20mA on 3000V/Tap 30mA on 2000V/Tap 120mA on 500V/Tap	BUS DIFF. MAIN
3	3000-2000-500 / 1	0.2S	20	-	-	-	METERING
4	3000-2000-500 / 1	0.2S	20	-	-	-	METERING
5	3000-2000-500 / 1	TPS	-	3000-2000-500	15-10-2.5	20mA on 3000V/Tap 30mA on 2000V/Tap 120mA on 500V/Tap	TRANS. BACKUP/LINE BACKUP PROTIN.
6	3000-2000-500 / 1	TPS	-	3000-2000-500	15-10-2.5	20mA on 3000V/Tap 30mA on 2000V/Tap 120mA on 500V/Tap	TRANS. DIFF. LINE PROTIN

All protection class shall be accuracy class TPS as per IEC 60044-6. Metering cores shall be accuracy class 0.2S as per IEC. 60044-1

800KV CVT:

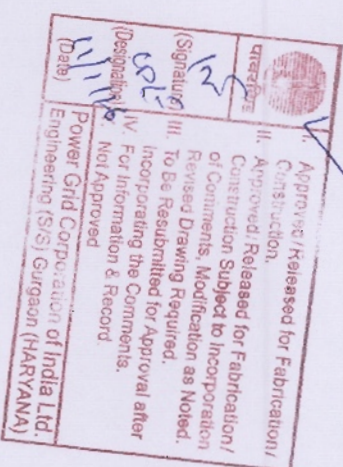
Ratio	759KV / √3	110V / √3	110V / √3	110V / √3
Sec-I	Class - 0.5/3P, 50VA			
Sec-II	Class - 0.5/3P, 50VA			
Sec-III	Class - 0.2, 50VA			
	Capacitance - 8800 pF			
	(+10%, -5%)			

400KV CVT:

Ratio	400KV / √3	110V / √3	110V / √3	110V / √3
Sec-I	Class - 0.5/3P, 50VA			
Sec-II	Class - 0.5/3P, 50VA			
Sec-III	Class - 0.2, 50VA			
	Capacitance - 4400 pF			
	(+10%, -5%)			

Rated Voltage Factor: 1.2 Continuous
1.5 for 30 Seconds

Rated Voltage factor: 1.2 Continuous
1.5 for 30 sec



NOA NO. : CC-CS/483-WR2/SS-2803/11/G6/NOA-1&2/5607 & 5508 DT. 01.09.15

POWER GRID CORPORATION OF INDIA LIMITED
SUBSTATION PACKAGE-SS02 FOR CONSTRUCTION OF 765/400/220KV BANASKANTHA S/S & EXT. OF 400KV BANASKANTHA(GECO) S/S UNDER GREEN ENERGY CORRIDOR LISTS PART-B(PART-1)

REVISIONS:

REV.	DATE	ALTERED	BY	AS/RS
20.10.15	APPROVED	AS/RS		

REVISIONS AS PER PGCIL COMMENT WIDE LETTER DATED 30 OCT 2015

DATE: 20.10.15

SCALE: 1:1

FOR 765/400/220KV BANASKANTHA S/S.

DATE: 25.11.15

B100-015-48E-3-BL ON ONMVARDC

FIRST ANGLE PROJECTION (ALL DIMENSIONS ARE IN MM)

220KV, 1600A, CT
 a) 120% Extended Rating applicable for ICTRI #2 and Transfer Bus Bays
 b) 150% Extended Rating applicable for Bus Coupler Bay

Core No.	Current Ratio	Accuracy Class	Output Burden VA	Min kV (V)	Max RCT In Ohms	Max Im at kV (mA)	Purpose
1	1600-800 / 1	PS	-	1600-800	8-4	25mA on 1600V Tap 50mA on 800V Tap	BUS DIFF. CHECK
2	1600-800 / 1	PS	-	1600-800	8-4	25mA on 1600V Tap 50mA on 800V Tap	BUS DIFF. MAIN
3	1600-800 / 1	0.2S	20	-	-	-	METERING
4	1600-800 / 1	PS	-	1600-800	8-4	25mA on 1600V Tap 50mA on 800V Tap	TRANS. BACKUP LINE BACKUP PROTIN
5	1600-800 / 1	PS	-	1600-800	8-4	25mA on 1600V Tap 50mA on 800V Tap	TRANS. DIFF. LINE PROTIN

Accuracy class PS as per IS:2705

220KV CVT:

Ratio	220KV / 110V / 110V / 110V
Sec-I	Class - 3P, 50VA
Sec-II	Class - 3P, 50VA
Sec-III	Class - 0.2, 50VA
Capacitance - 4400 pF (+10%, -5%)	

Rated Voltage Factor: 1.2 Continuous
 1.5 for 30 Seconds

72.5KV, 50A, CT

Core No.	Current Ratio	Accuracy Class	Output Burden VA	Min kV (V)	Max RCT In Ohms	Max Im at kV (mA)	Purpose
1	50 / 1	5P10	10	-	-	-	O/C & E/F Metering
2	50 / 1	0.5	10	-	-	-	-

72.5KV VLE:

Ratio	33KV / 110V / 110V / 110V
Sec-I	Class - 3P, 10VA
Sec-II	Class - 0.5, 10VA

Approved/Released for Fabrication/Construction.
 Approved/Released for Incorporation/Construction Subject to Incorporation/Construction, Modification as Noted.
 Revised Drawing Required.
 To Be Re-submitted for Approval after Incorporating the Comments.
 For Information & Record.
 Not Approved.
 Power Grid Corporation of India Ltd.
 Engineering (S/S) Gurgaon (HARYANA)

(Signature)
(Date)

INVENTORY No.	SIGN. & DATE	REF. DRG. No.

LEGENDS:-
 ——— PRESENT SCOPE
 - - - - - FUTURE/EXISTING SCOPE

- NOTES:
- ELECTRICAL CONNECTION SHALL BE MADE MANUALLY DEPENDING UPON 765KV SIDE SWITCHING OF DIFFERENT FEEDERS OF AUTOTRANSFORMER/REACTOR.
 - SUPPLY, ERECTION, TESTING & COMMISSIONING INCLUDING FORMATION OF HV, LV, NEUTRAL, TERTIARY & AUXILIARY BUSES OF 3x500MVA, (765KV / 3) / (400KV / 3) / 3KV 10 AUTO TRANSFORMERS AND LINE/BUS REACTOR ARE NOT IN BHEL SCOPE.
 - 765KV WAVE TRAP SHALL BE PROVIDED IN TWO PHASE ONLY.
 - 400KV WAVE TRAP SHALL BE PROVIDED IN ONE PHASE ONLY.
 - PART-2 EQUIPMENTS SHALL BE SUPPLIED BY BHEL AFTER ORDER RECEIVED FROM PGCL.

NOA NO. : CC-CS/483-TR2/SS-2803/11/G8/NOA-142/5507 & 5508 DT. 01.09.15

ADDITIONAL INFORMATION
 W.O.No. 85003

STATUS OF DRAWING CONTRACT

DISTRIBUTION OF PRINTS

REV. DATE ALTERED BY SK/AM AS/RS

20.10.15 APPROVED AS/RS

REVISED AS PER PGCL COMMENT
 WIDE LETTER DATED 30 OCT 2015

POWER GRID CORPORATION OF INDIA LIMITED
 SUBSTATION PACKAGE-SS02 FOR CONSTRUCTION OF 765/400/220KV BANASKANTHA S/S & EXT. OF 400KV SANKHAR(GETCO) S/S UNDER GREEN ENERGY CORRIDOR ISTS PART-B(PART-1)

FOR 765/400/220KV BANASKANTHA S/S.

SINGLE LINE DIAGRAM

TB-3-384-510-001B
 TB-3-384-510-001B

23.11.15