

# PRODUCT STANDARD TURBINES & COMPRESSORS

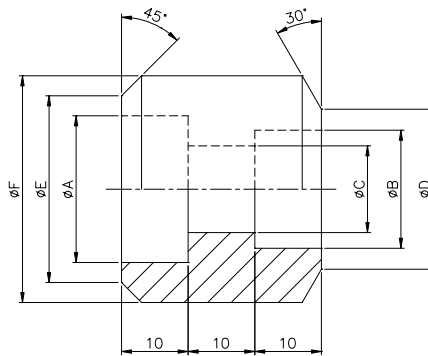
TC - 9 - 6013

REV NO: 01

SHEET 1 OF 3

## SS SOCKET REDUCERS

**Designation** : Socket reducer Var No XX TC-9-6013  
**Ordering Details** : TC-9-6013  
**Material** : ASTM A276 Gr TP304 rounds (HY10770) Annealed or Eqv.  
**Application** : Used in connecting Small Bore Pipes in Governing oil and similar piping.



### Variant Table :

All Dimensions are in mm.

Var No	Size	A	B	C	D	E	F	Raw Mat Size	Wt/Pc (kg.)	Comp code
								Raw Mat code		
01	1 1/2"x1"	48.8	34.2	25	40.0	55.0	60	RD Ø63X35	0.400	TC9696013019
								HY1070270202		
02	1 1/2"x3/4"	48.8	27.5	20	33.5	55.0	60	RD Ø63X35	0.440	TC9696013027
								HY1070270202		
03	1 1/2"x1/2"	48.8	22.0	15	28.0	55.0	60	RD Ø63X35	0.460	TC9696013035
								HY1070270202		
04	1"x3/4"	34.2	27.5	20	33.5	40.0	45	RD Ø50X35	0.235	TC9696013043
								HY1070270180		
05	1"x1/2"	34.2	22.0	15	28.0	40.0	45	RD Ø50X35	0.259	TC9696013051
								HY1070270180		
06	1"x3/8"	34.2	17.7	13	24.0	40.0	45	RD Ø50X35	0.278	TC9696013060
								HY1070270180		
07	3/4"x1/2"	27.5	22.0	15	28.0	33.5	38	RD Ø50X35	0.179	TC9696013078
								HY1070270180		
08	3/4"x3/8"	27.5	17.7	13	24.0	33.5	38	RD Ø50X35	0.198	TC9696013082
								HY1070270180		
09	3/4"x1/4"	27.5	14.0	10	20.0	33.5	38	RD Ø50X35	0.206	TC9696013094
								HY1070270180		
10	1/2"x3/8"	22.0	17.7	13	24.0	28.0	34	RD Ø36X35	0.153	TC9696013108
								HY1070270150		

Prepared

Checked

Approved

Date

G.P.Rao

G.P.Rao

G.P.Rao

04.03.1989

FORMAT  
TD-201  
REV-00

COPYRIGHT AND CONFIDENTIAL

The information on this document is the property of BHEL. It must not be used directly or indirectly in any way detrimental to the interest of the company.



## PRODUCT STANDARD TURBINES & COMPRESSORS

**TC – 9 – 6013**

REV NO: 01

SHEET 2 OF 3

Var No	Size	A	B	C	D	E	F	Raw Mat Size	Wt/Pc (kg.)	Comp code
								Raw Mat code		
11	1/2"X1/4"	22.0	14.0	10	20.0	28.0	34	RD Ø36X35	0.161	TC9696013116
								HY1070270150		
12	1/2"X1/8"	22.0	10.7	8	17.0	28.0	34	RD Ø36X35	0.170	TC9696013124
								HY1070270150		
13	3/8"X1/4"	17.7	14.0	10	20.0	24.0	30	RD Ø36X35	0.128	TC9696013132
								HY1070270150		
14	3/8"X1/8"	17.7	10.7	8	17.0	24.0	30	RD Ø36X35	0.137	TC9696013140
								HY1070270150		
15	1/4"X1/8"	14.0	10.7	8	17.0	20.0	23	RD Ø30X35	0.079	TC9696013159
								HY1070270644		
16	1/4"X8mm	14.0	8.5	6	15.5	20.0	23	RD Ø30X35	0.082	TC9696013167
								HY1070270644		
17	1/8"X8mm	10.7	8.5	6	15.5	17.0	21	RD Ø30X35	0.068	TC9696013175
								HY1070270644		
18	1/8"X6mm	10.7	6.5	4	13.5	17.0	21	RD Ø30X35	0.070	TC9696013183
								HY1070270644		
19	8X6mm	8.5	6.5	4	13.5	15.5	20	RD Ø30X35	0.060	TC9696013191
								HY1070270644		
20	1 1/4" X 1"	42.8	34.2	25	40.0	53.0	58	RD Ø63X35	0.420	TC9696013205
								HY1070270202		

FORMAT  
TD-202  
REV-00

COPYRIGHT AND CONFIDENTIAL

The information on this document is the property of BHEL. It must not be used directly or indirectly in any way detrimental to the interest of the company.

