



BHARAT HEAVY ELECTRICALS LIMITED
TRANSMISSION BUSINESS ENGINEERING MANAGEMENT
 NEW DELHI

DOCUMENT No.	TB-376-316-052	Rev	00	Prepared	Checked	Approved
CUSTOMER Doc. No.		NAME	SK	AS	RS	
TYPE OF DOC.	TECHNICAL SPECIFICATION	SIGN	<i>[Signature]</i>	<i>[Signature]</i>	<i>[Signature]</i>	
TITLE	Visual Monitoring system for Watch and Ward of Substation Premises	DATE	24.11.15	<i>[Signature]</i>	<i>[Signature]</i>	
		GROUP	TBEM			
		W.O. No				
CUSTOMER	POWER GRID CORPORATION OF INDIA LIMITED					
PROJECT	765kV/400kV Agra UPPTCL (New) Substation					
NOA Ref:						

<u>List of Contents</u>	<u>No. of Pages</u>
Cover Sheet	01
Section 1 Scope & Technical Specification	06
Section 2 Project Details	01 - 29
 <u>Enclosures:</u>	
Annexure – A (NO DEVIATION Certificate)	01
 <u>Drawings:</u>	
Control Room building drawing	
Layout Plan for 765kV/400kV S/S	
Sectional Elevation 765kV/400kV S/S	
Switchyard panel room	

00					First Issue	
Rev.	Date	Altered	Checked	Approved	REVISION DETAILS	
Distribution				CUSTOMER	TBMM	O/C
				-	1	1

COPYRIGHT & CONFIDENTIAL
 THE INFORMATION CONTAINED IN THIS DOCUMENT IS THE PROPERTY OF BHARAT HEAVY ELECTRICALS LIMITED
 THIS MUST NOT BE USED DIRECTLY OR INDIRECTLY IN ANY MANNER DETRIMENTAL TO THE INTEREST OF THE COMPANY

SECTION - 1

1.1 SCOPE

This technical specification covers the requirements of design, supply, erection/installation, testing and commissioning the complete visual monitoring system including cameras, digital video recorder system, mounting arrangement for cameras, cables, LAN switches, UPS and any other items/accessories for the 765kV/400kV Agra S/s. It shall also be bidder's responsibility to provide all necessary licenses to Owner i.e. UPPTCL to run the system successfully.

The VMS system is required for the following Project

Customer : Power Grid Corporation of India Ltd.
Project : 765kV/400kV Agra UPPTCL (NEW) Substation
Owner : UP Power Transmission Corporation Ltd.

Bidder shall submit the detailed BOQ and drawings indicating qty. of each items required for Visual monitoring system in the tender stage, the drawings and BOQ shall be submitted to BHEL/Powergrid for approval. It shall be bidder's responsibility to get the approval in the drawing/BOQ from POWERGRID. Bidder shall also be required to visit BHEL/POWERGRID office for technical discussion.

Visual monitoring system (VMS) is required for effective watch and ward of Agra Substation premises covering the areas of complete switchyard, control room cum administrative building, fire fighting pump house, stores and main gate .

System with colour IP cameras for VMS surveillance would be located at various locations including indoor areas and outdoor switchyard and as per the direction of engineer in charge. The VMS data partly/completely shall be recorded (Minimum for 15 days) and stored on network video recorder.

It will be bidder's responsibility to assess number of cameras and their locations shall be decided in such a way that any location covered in the area can be scanned. The cameras shall be located in such a way to monitor at least

1. The operation of each and every isolator pole of the complete yard (including future scope)
2. All the transformer and reactors (including future scope)
3. All the entrance doors of control room building and fire fighting pump house and switchyard panel room
4. All the gates of switchyard
5. Main entrance gate
6. All other Major equipments (such as CB, CT, CVT, SA etc. For present and future)

The cameras shall be mounted on structures, buildings. Bidder is advised to refer Layout and sectional elevation drawing enclosed with this specification, and if bidder feels that at any one or more locations it is not possible to cover the requisite area by placing cameras on existing structure or building , in that case bidder can suggest alternative mounting arrangement and such alternative arrangement should be supplied by bidder without any extra cost implication to BHEL. Further alternative mounting arrangement should be proposed to BHEL/POWERGRID for acceptance.

The scope of supplies shall be as per commercial terms and conditions enclosed separately with the enquiry.

1.2 SPECIFIC TECHNICAL REQUIREMENTS

The video monitoring system shall be an integral system with IP network centric functional and management architecture aimed at providing high speed manual/automatic operation for best performance.

The system should facilitate viewing of live and recorded images and controlling of all cameras by the authorized users.

The system shall use video signals from various types of indoor/outdoor CCD color cameras installed at different locations, process them for viewing on workstations/monitors in the control room and simultaneously record all the cameras after compression using H 264/MPEG 4 or better standard. Mouse/Joystic-keyboard controllers shall be used for pan, tilt, zoom and other functions of desired cameras.

The system shall provide sufficient storage of all the cameras recordings for a period of 15 days or more @ 25FPS, at 4 CIF or better quality using necessary compression techniques for all cameras. It shall be ensured that data once recorded shall not be altered by any means. The recording resolution and frame rate for each camera shall be user programmable.

The surveillance VMS system shall operate on 230V, 50Hz single phase Power supply. System shall have back up UPS Power supply meeting the power supply need of all the cameras in the stations including those which are installed at gate for a period of 2 hrs. The bidder shall submit the sizing calculation for the UPS considering the total load requirement of video monitoring system.

System Requirements:

1. System must provide built in facility of watermarking or digital certificate to ensure tamperproof recording.
2. All cameras may be connected through a suitable LAN which shall be able to perform In 765kV class substation environment without fail.
3. All cameras recording shall have camera ID, location/area of recording & data /time shall be programmable by the system administrator with user ID & Password.
4. Facility of camera recording in real time mode (25 FPS)/15/12.5/10 or lower FPS as well as in any desired combination must be available in the system.
5. Facility of camera recording in HD (1280X720P), D1, 4CIF, CIF, VGA as well as in any combination i.e. any camera can be recorded in any quality.
6. System to have facility of 100% additional camera installation beyond the originally planned capacity.
7. In order to optimize the memory , while recording, video shall be compressed using H 264/MPEG-4 or better standard and streamed over the IP network.
8. System shall have triplex i.e. it should provide facility of viewing, recording & reply simultaneously.
9. The offered system shall have facility to export the desired portion of clipping (from a specific date/time to another specific date/time) on CD or DVD. Viewing of this recording shall be possible on standard PC using standard software like windows media player etc.
10. System shall have provision of WAN connectivity for remote monitoring.
11. The equipment should generally conform to electro magnetic compatibility requirements for outdoor equipment in EHV switchyards. The major EMC required for cameras and other equipment shall be as under:
 1. Electrical Fast transient (Level 4) ---As per IEC 61000-4-4
 2. Damped Oscillatory (1MHz and 100kHz) (Level3)-- As per IEC 61000-4-12
 3. AC Voltage dips & Interruption/Vibration (Level 4)—As per IEC 61000-4-12
 4. Electrostatic discharge (Level 4) ---As per IEC 61000-4-2
 5. Power frequency Magnetic field (Level 4) –As per IEC 61000-4-8
 6. Ripple on DC Power supply (Level 4) ---As per IEC 61000-4-17

Type test reports to establish compliance with the above requirement shall be submitted during detailed engineering.

1.3 Video Surveillance Application software

- a) Digital video surveillance control software should be capable to display and manage the entire surveillance system. It should be capable of supporting variety of devices such as cameras, video encoder, servers, NAS boxes/Raid backup devices etc.
- b) The software should have inbuilt facility to store configuration of encoders and cameras.
- c) The software should support flexible 1/2/4/8/16/32 windows split screen display mode and scroll mode on the PC monitor.
- d) The software should be able to control all cameras i.e. PTZ control, Iris control, auto/manual focus, and color balance of cameras, selection of presets, Video tour selection etc.
- e) The software should have user access authority configurable on per device or per device group basis. The system shall provide user activity log with user ID, time stamp, action performed etc.
- f) The user should be on a hierarchical basis as assigned by the administrator. The higher priority person can take control of cameras, which are already being controlled by a lower priority user.
- g) It should have recording modes viz. continuous , manual or programmed modes on date , time and camera-wise . All modes should be disabled and enabled using scheduled configuration. It should also be possible to search and replay the recorded images on date, time and camera wise. It should provide onscreen controls for remote operation of PTZ cameras. It should have the facility for scheduled recording. Different recording speeds (fps) and resolution for each recording mode for each camera should be possible.
- h) The software for clients should also be working on a browser based system for remote users. This will allow any authorized user to display the video of any desired camera on the monitor with full PTZ and associated controls.
- i) Retrieval: The VMS application should allow retrieval of data instantaneously or any date/time interval chosen through search functionality of the application software. In case data is older than 15 days and available , the retrieval should be possible. The system should also allow for backup of specific data on any drives like DVD's or any other device in a format which can be replayed through a standard PC based software. Log of any such activity should be maintained by the system.
- j) VMS shall provide the full functionality reporting tool which can provide reports for user login/logoff, camera accessibility report, server health check reports etc.

1.4 Network Video Recorder

The Network video recorder shall also include at least server (Min 3GHz, 4 GB RAM, 3000GB HDD(min) , RAID 5, with suitable configuration along with colored TFT 22" High resolution monitor, and Internal DVD writer, Windows XP/Vista/7 Prof. or VMS compatible operating system latest version with hardware like graphic cards, licensed Anti virus etc.

Further the digital video recorder shall conform to the following requirements:

1	Server specification	Intel Quad core (or better) 3 Ghz (min), 8MB cache, 4 GB memory with suitable NVIDIA graphics card, 3TB HDD , Raid 5
2	Recording and Display Frame Rate	Real time 25 frames per second per channel, manual select
3	Recording Resolution	(PAL) 1280x720, 407(H)x586(V). It shall be possible to select lower resolution.

4	Compression Method	H,264/MPEG-4 or better and latest
5	Video Motion detection capable	Standard and built in (selectable in menu)
6	Monitoring Options	Split screen 1,2,4,8,16,32 or more cameras
7	Playback options	Search, still image capture
8	Alarm/Event recording Capable	To be provided with built in external alarm input/output ports minimum (8 in , 2 Out)
9	Network Operation Capable	To be provided by using WAN or LAN router
10	Remote internal viewing capable	Using WAN or LAN router
11	HDD storage consumption	1GB per hour/channel variable based on frame speed and resolution settings, as well as compression
12	Operation	Triplex operation(simultaneous recording, playback, network operation)
13	Number of video channel	32
14	Audio Recording capable	32
15	Input storage	230V AC or equivalent with UPS as a backup for 30 minutes

1.5 VMS Cameras:

1. The color IP camera for substation shall have PAN, TILT and ZOOM facilities so that it can be focused to the required location from the remote station through a controller. Whereas wireless IP cameras with PTZ controls are required for installation at gates of the Substation premises as per the direction of Engineer-In – Charge.
2. The IP camera at the main gate can be fixed or PTZ based and shall be used for monitoring entry and exit.
3. It should have sufficient range for viewing all the poles of isolators and other equipments with high degree of clarity.
4. The VMS cameras shall be suitable for wall mounting, ceiling mounting and switchyard structure mounting.
5. It shall be possible to define at 128 selectable preset locations so that the camera gets automatically focussed on selection of the location for viewing a predefined location.
6. The cameras should be able to detect motion in day & night environment having light intensity of Color: 0.5 Lux, B & W : .05lux
7. Housing of cameras meant for indoor use shall be of IP 42 or better rating whereas outdoor camera housing shall be of IP 66 or better rating. Housing shall be robust and not have the effect of electromagnetic induction in 765kV/400kV switchyard.
8. All camera recordings shall have camera ID & location/area of recording & date/time shall be programmable by the system administrator with user ID & Password.
9. Facility of camera, recording in real time mode (25FPS)/15/12.5/10 or lower FPS as well as in any desired combination must be available in the system.

1.6 Outdoor IP Fixed Megapixel Camera Specifications (For Main Gate)

1.	Image sensor	2Megapixel Progressive 1/3" CMOS/CCD sensor, Minimum Illumination 0.1 Lux
2.	Min Luminous ring)	0.5Lux (Color) 0.05 Lux (Back)

3.	Camera Enclosure type	IP 66 Grade
4.	Iris/Focus	Auto/Manual
5.	Video Compression	Dual stream H,264 and MPEG 4 user selectable
6.	Support dual-stream	Primary/secondary stream, H 264/MPEG 4 optional
7.	Video definition	Primary stream: 1600x1200,1200x960,1280x720
8.	Video parameters	Brightness, hue, ,saturation and image quality
9.	Video frame rate	PAL: 1-25 frames/second NTSC: 1-30 frames/second
10.	Video compression BR	32Kbit/S-6Mbit/S
11.	Video Output	One channel composite Streaming
12.	Supported Protocols	TCP,UDP,IP,HTTP,FTP,SMTP,DHCP ,DNS,ARP,ICMP,POP3,NTP,IPsec,UpnP, RTP,RTCP
13.	Operating Temperature	-5~+50 ⁰ C
14.	Operating humidity	10~90%

1.7 Outdoor IP66 PTZ HD Camera specifications (For Switchyards)

1.	Image Sensor	1/3 type solid state progressive scan CCD,WDR (high definition)
2.	Security	Multiple user access with password protection
3.	Effective Pixels	(PAL): Main stream: 1280x720 Sub stream: 640x360, 320x280 selectable
4.	Compression	Dual Stream H.264 and MPEG 4 user selectable
5.	Signal system	50Hz
6.	S/N (Signal to Noise)	Better than 50 dB
7.	Electronic Shutter	1/60~1/10,000 sec. automatic or better
8.	Scanning system	Progressive/Interface
9.	Low Light Sensitivity (Lux)	Color: 0.5 Lux, B & W :0.02 Lux
10.	Lens	Minimum 10X (Min.)optical in high definition (The system shall be able to zoom the images on the monitor without any distortion to the maximum level of optical zoom)
11.	Lens size	Minimum 4.1~73.8mm
12.	Lens Aperture	F1.6(wide)~F2.8(tele), f=4.1~41.0mm,10X zoom Video Auto Focus Angle of view Horizontal: 52 ⁰ (wide) 2.8 ⁰ (tele)
13.	PTZ data Transfer Baud/Bit Rates supported	Selectable 2400bps/4800bps/9600 bps
14.	Panning Range	Complete 360degrees (horizontal)
15.	Pan Speed	Adjustable, 0.1 degrees/Second ~250 degrees/second

16.	Tilting Range	Minimum 180 ⁰ Tilt rotation
17.	Tilt speed	Adjustable, 0.1 degrees/sec~150degrees/sec
18.	In built storage	Camera should have inbuilt storage TF or SD format for recording and storing pictures
19.	IP class	IP 66 Standard
20.	Working temperature	-0 ⁰ C~+50 ⁰ C
21.	Working Humidity	10~90%

1.8 PTZ- Keyboards

The features of PTZ shall include:

- Fully functional dynamic keyboard/joystick controllers
- Controls all pan, tilt, zoom, Iris, preset functions
- Control up to 255 units from a single keyboard
- Many preset options and advanced tour programming
- Compatible with all connected cameras

1.	Key Application	Wired keyboard control operation of PTZ functions for weatherproof dome cameras
2.	Pan/Tilt/Zoom Protocol Languages supported	Selectable
3.	PTZ data transfer Baud Rates supported	Selectable 1200bps/2400bps/4800bps/9600bps
4.	Additional Features	Dynamic joystic for smooth camera movements, preset location option for quick access to frequently monitored areas.

1.9 Test Requirement

The vendor shall submit a FAT (factory acceptance test) & SAT (site acceptance test) plan complying the specification for POWERGRID / BHEL approval that will be used during inspection at works & and site respectively.

- i) Complete operating and maintenance manuals and training of O&M personnel.
- ii) System commissioning and acceptance tests as specified in site acceptance test (SAT) plan.

1.10 Documents to be provided by bidder

- Detailed BOQ to meet the requirement of specification with make, model & quantity of each item
- Technical datasheet/Catalogues/brochures of the item
- Test certificates as per relevant standards
- Reference list of the Projects where similar equipment for similar application is being used for at least 2 years.

1.11 BILL OF QUANTITY:

VMS system with all accessories - 1 Lot

(Item/Quantity detail are required, all items to be given by bidder)

SECTION-2

PROJECT DETAILS & GENERAL SPECIFICATION

SITE INFORMATION

	Particular	Details
a)	Owner	UP POWER TRANSMISSION CORPORATION Ltd
b)	Customer	POWERGRID
c)	Project Title	765kV/400kV Agra UPPTCL (New)Substation
d)	Location	AGRA
e)	Transport Facilities	RAOD/TRAIN
SITE CONDITIONS		
a)	Max. ambient air temp.	50°C
b)	Min. ambient air temp.	0°C
c)	Max. design ambient temp.	50°C
d)	Design reference temp.	50°C
e)	Average Humidity	Max. 100%
f)	Special corrosion conditions	No
g)	Solar Radiation	1.2kW/sqmtr
h)	Atmospheric UV radiation	High
i)	Altitude above sea level	Less than 1000meter
j)	Pollution Severity	High Pollution level (25mm/kV)
k)	Seismic Zone	As per the seismic zone defined in the relevant BIS but not less than 0.3g horizontal
WIND DATA		
	Wind velocity	As per IS
	Average No. of thunderstorm days per annum	As per IS

1.0 GENERAL

This Chapter covers Technical Requirements and requirements of auxiliary items.

- a) Equipment furnished shall be complete in every respect with all mountings, fittings, fixtures and standard accessories normally provided with such equipment and/or needed for erection, completion and safe operation of the equipment as required by applicable codes unless included in the list of exclusions.
- b) Material and components not specifically stated in this specification but which are necessary for satisfactory operation of the equipment and accessories specified in this specification shall be deemed to be included unless specifically excluded and shall be supplied at no extra cost.
- c) Whenever a material or article is specified or described by the name of a particular brand, manufacturer or vendor, the specific name mentioned shall be understood as establishing type, function and quality and not as limiting competition.
- d) In case any Deviation Schedule, Bid Proposal Sheet, Schedule of Data Requirements (DRS), test reports or any other document/information are not furnished along-with the bid, the bid is liable to be rejected. Unless brought out clearly, the Bid will be deemed to conform to the specification scrupulously. All deviations from the specification shall be clearly brought out in the respective deviation schedule.

Auxiliary supplies as described below would be available at site.

Normal Voltage (Volts)	Variation in voltage (Hz)	Frequency	Phase	Neutral connection
415	+ 10 %	50 + 5 %	3 Ph- 4wire	Solidly earthed
240	+ 10 %	50 + 5 %	1 Ph-2wire	Solidly earthed
220	+ 10 %	DC		Isolated(2 wire system)
48		DC		Isolated(2 wire system) (+ Earthed)

- f) The Bidder shall clearly indicate in the bid, the specific standards in accordance with which the works will be carried out.
- g) The equipment must be new, of highest grade, the best quality of their kind, to best engineering practice and latest state of art, and in accordance with purpose for which they are intended and ensure satisfactory performance throughout the service life.
- h) All similar parts of the equipment shall be made to gauge and shall be interchangeable with and shall be made of same materials and workmanship as the corresponding parts of the equipment. Where feasible, common components, units shall be employed in different pieces of equipment in order to optimize the spare part stock-up and utilization.
- i) The requirement regarding external RIV as specified for equipment shall include the terminal fittings and the equipment shall have been tested preferably with fittings, if any.

2.0 SERVICES TO BE PERFORMED BY THE EQUIPMENT BEING FURNISHED

- a) The equipment furnished under this specification shall perform all its functions and operate satisfactorily without showing undue strain, restrike etc.
- b) The equipment shall be able to withstand forces due to wind load, short circuit, system over voltages, fluctuations, frequency variations etc., all forces considered together.

3.0 SUPPORT STRUCTURES (If in the scope of Bidder)

- a) The support structures should be hot dip galvanised with minimum 610 gram/m² net of zinc.
- b) The design calculations taking into account the environmental conditions of the substations shall be furnished for sizing of the structures.

4.0 STANDARDS

- a) The equipment to be furnished under this specification shall conform to latest issue with all amendments of standard specified under respective Chapters of this Specification. The Bidder shall note that standards mentioned in the specification are not mutually exclusive or complete in themselves, but intended to compliment each other. The bidder shall also note that list of standards presented in this specification is not complete. Whenever necessary the list of standards shall be considered in conjunction with specific IS/IEC. When the specific requirements stipulated in the specifications exceed or differ than those required by the applicable standards, the stipulation of the specification shall take precedence.
- b) Other internationally accepted standards which ensure equivalent or better performance than that specified in the standards referred shall also be accepted.
- c) In case governing standards for the equipment is different from IS or IEC, the

salient points of difference shall be clearly brought out in additional information schedule alongwith English language version of standard or relevant extract of the same. The equipment conforming to standards other than IS/IEC shall be subject to POWERGRID's approval.

5.0 ENGINEERING DATA AND DRAWINGS

5.1 The list of drawings/documents which are to be submitted to the Purchaser shall be discussed and finalised by the Purchaser at the time of award. The supplier shall necessarily submit all the drawings/ documents unless anything is waived.

5.2 The Contractor shall submit 4 (four) sets of drawings/ design documents /data / detailed bill of quantity and 1 (one) set of test reports for the approval of the Purchaser. The contractor shall also submit the softcopy of the above documents in addition to hardcopy.

5.3 Drawings

5.3.1 All drawings submitted by the Contractor shall be in sufficient detail to indicate the type, size, arrangement, material description, Bill of Materials, weight of each component, break-up for packing and shipment, dimensions, internal & the external connections, fixing arrangement required and any other information specifically requested in the specifications.

5.3.2 Drawings submitted by the Contractor shall be clearly marked with the name of the Purchaser, the unit designation, the specifications title, the specification number and the name of the Project. POWERGRID has standardized a large number of drawings/documents of various make including type test reports which can be used for all projects having similar requirements and in such cases no project specific approval (except for list of applicable drawings alongwith type test reports) is required. However, distribution copies of standard drawings/documents shall be submitted as per provision of the contract. All titles, noting, markings and writings on the drawing shall be in English. All the dimensions should be in SI units.

5.3.3 The review of these data by the Purchaser will cover only general conformance of the data to the specifications and documents, interfaces with the equipment provided under the specifications, external connections and of the dimensions which might affect substation layout. This review by the Purchaser may not indicate a thorough review of all dimensions, quantities and details of the equipment, materials, any devices or items indicated or the accuracy of the information submitted. This review and/or approval by the Purchaser shall not be considered by the Contractor, as limiting any of his responsibilities and liabilities for mistakes and deviations from the requirements, specified under these specifications and documents.

5.4 All manufacturing and fabrication work in connection with the equipment prior to the approval of the drawings shall be at the Contractor's risk. The Contractor may make any changes in the design which are necessary to make the equipment conform to the provisions and intent of the Contract and such changes will again be subject to approval by the Purchaser. Approval of Contractor's drawing or work by the Purchaser shall not relieve the contractor of any of his

responsibilities and liabilities under the Contract.

5.5 All engineering data submitted by the Contractor after final process including review and approval by the Purchaser shall form part of the Contract Document and the entire works performed under these specifications shall be performed in strict conformity, unless otherwise expressly requested by the Purchaser in Writing.

5.7 Approval Procedure

The scheduled dates for the submission of the drawings as well as for, any data/information to be furnished by the Purchaser would be discussed and finalised at the time of award. The following schedule shall be followed generally for approval and for providing final documentation.

- | | | |
|-------|--|---|
| i) | Approval/comments/
Purchaser on initial | As per agreed by
schedule submission |
| ii) | Resubmission
(whenever
required) | Within 3 (three) weeks
from date of comments |
| iii) | Approval or comments | Within 3 (three) weeks of receipt
of resubmission. |
| iv) | Furnishing of distribution
copies (5 hard copies per
substation and one scanned
copy (pdf format) for Corporate
Centre) | 2 weeks from the date
of approval |
| v) | Furnishing of distribution copies of test reports | |
| (a) | Type test reports
(one scanned softcopy in
pdf format per substation plus one for corporate centre
& one hardcopy per substation) | 2 weeks from the date
of final approval |
| (b) | Routine Test Reports
(one copy for each substation) | -do- |
| vi) | Furnishing of instruction/
(2 copies
per substation and one softcopy
(pdf format) for corporate centre
& per substation) | As per agreed schedule operation manuals |
| (vii) | As built drawings (two sets of
hardcopy per substation & one
softcopy (pdf format) for
corporate centre & per substation) | On completion of entire works |

NOTE :

- (1) The supplier may please note that all resubmissions must incorporate all comments given in the earlier submission by BHEL/POWERGRID or adequate justification for not incorporating the same must be submitted failing which the submission of documents is likely to be returned.
- (2) All drawings should be submitted in softcopy form, however substation

design drawings like SLD, GA, all layouts etc. shall also be submitted in AutoCAD Version. SLD, GA & layout drawings shall be submitted for the entire substation in case of substation extension also.

- (3) The instruction Manuals shall contain full details of drawings of all equipment being supplied under this contract, their exploded diagrams with complete instructions for storage, handling, erection, commissioning, testing, operation, trouble shooting, servicing and overhauling procedures.
- (4) If after the commissioning and initial operation of the substation, the instruction manuals require any modifications/ additions/changes, the same shall be incorporated and the updated final instruction manuals shall be submitted by the supplier to BHEL/POWERGRID.
- (5) The manufacturer shall furnish to the Purchaser catalogues of spare parts.
- (6) All As-built drawings/documents shall be certified by site indicating the changes before final submission.

6.0 MATERIAL WORKMANSHIP

6.1 General Requirement

- 6.1.1 Where the specification does not contain references to workmanship, equipment, materials and components of the covered equipment, it is essential that the same must be new, of highest grade of the best quality of their kind, conforming to best engineering practice and suitable for the purpose for which they are intended.
- 6.1.2 In case where the equipment, materials or components are indicated in the specification as "similar" to any special standard, the Purchaser shall decide upon the question of similarity. When required by the specification or when required by the Purchaser the Contractor shall submit, for approval, all the information concerning the materials or components to be used in manufacture. Machinery, equipment, materials and components supplied, installed or used without such approval shall run the risk of subsequent rejection, it being understood that the cost as well as the time delay associated with the rejection shall be borne by the supplier.
- 6.1.3 The design of the Works shall be such that installation, future expansions, replacements and general maintenance may be undertaken with a minimum of time and expenses. Each component shall be designed to be consistent with its duty and suitable factors of safety, subject to mutual agreements. All joints and fastenings shall be devised, constructed and documented so that the component parts shall be accurately positioned and restrained to fulfill their required function. In general, screw threads shall be standard metric threads. The use of other thread forms will only be permitted when prior approval has been obtained from the BHEL/POWERGRID.
- 6.1.4 Whenever possible, all similar part of the Works shall be made to gauge and shall also be made interchangeable with similar parts. All spare parts shall also be interchangeable and shall be made of the same materials and workmanship as the corresponding parts of the Equipment supplied under the Specification. Where feasible, common component units shall be employed

in different pieces of equipment in order to minimize spare parts stocking requirements. All equipment of the same type and rating shall be physically and electrically interchangeable.

- 6.1.5 All materials and equipment shall be installed in strict accordance with the manufacturer's recommendation(s). Only first-class work in accordance with the best modern practices will be accepted. Installation shall be considered as being the erection of equipment at its permanent location. This, unless otherwise specified, shall include unpacking, cleaning and lifting into position, grouting, levelling, aligning, coupling of or bolting down to previously installed equipment bases/foundations, performing the alignment check and final adjustment prior to initial operation, testing and commissioning in accordance with the manufacturer's tolerances, instructions and the Specification. All factory assembled rotating machinery shall be checked for alignment and adjustments made as necessary to re-establish the manufacturer's limits suitable guards shall be provided for the protection of personnel on all exposed rotating and / or moving machine parts and shall be designed for easy installation and removal for maintenance purposes. The spare equipment(s) shall be installed at designated locations and tested for healthiness.
- 6.1.6 The supplier shall apply oil and grease of the proper specification to suit the machinery, as is necessary for the installation of the equipment. Lubricants used for installation purposes shall be drained out and the system flushed through where necessary for applying the lubricant required for operation. The supplier shall apply all operational lubricants to the equipment installed by him.
- 6.1.7 All oil, grease and other consumables used in the Works/ Equipment shall be purchased in India unless the Contractor has any special requirement for the specific application of a type of oil or grease not available in India. In such is the case he shall declare in the proposal, where such oil or grease is available. He shall help POWERGRID in establishing equivalent Indian make and Indian Contractor. The same shall be applicable to other consumables too.
- 6.1.8 Corona and radio interference voltage test and seismic withstand test (for 132kV and above voltage level) procedures for equipments shall be in line with the procedure given at Annexure-A and B respectively.

6.2 Provisions For Exposure to Hot and Humid climate

Outdoor equipment supplied under the specification shall be suitable for service and storage under tropical conditions of high temperature, high humidity, heavy rainfall and environment favourable to the growth of fungi and mildew. The indoor equipments located in non-air conditioned areas shall also be of same type.

6.2.1 Space Heaters

- 6.2.1.1 The heaters shall be suitable for continuous operation at 240V as supply voltage. On-off switch and fuse shall be provided.
- 6.2.1.2 One or more adequately rated thermostatically connected heaters shall be supplied to prevent condensation in any compartment. The heaters shall be installed in the compartment and electrical connections shall be made sufficiently away from below the heaters to minimize deterioration of

supply wire insulation. The heaters shall be suitable to maintain the compartment temperature to prevent condensation.

6.2.1.3 Suitable anti condensation heaters with the provision of thermostat shall be provided.

6.2.2 FUNGI STATIC VARNISH

Besides the space heaters, special moisture and fungus resistant varnish shall be applied on parts which may be subjected or predisposed to the formation of fungi due to the presence or deposit of nutrient substances. The varnish shall not be applied to any surface of part where the treatment will interfere with the operation or performance of the equipment. Such surfaces or parts shall be protected against the application of the varnish.

6.2.3 Ventilation opening

Wherever ventilation is provided, the compartments shall have ventilation openings with fine wire mesh of brass to prevent the entry of insects and to reduce to a minimum the entry of dirt and dust. Outdoor compartment openings shall be provided with shutter type blinds and suitable provision shall be made so as to avoid any communication of air / dust with any part in the enclosures of the Control Cabinets, Junction boxes and Marshalling Boxes, panels etc.

6.2.4 Degree of Protection

The enclosures of the Control Cabinets, Junction boxes and Marshalling Boxes, panels etc. to be installed shall provide degree of protection as detailed here under:

- a) Installed out door: IP- 55
- b) Installed indoor in air conditioned area: IP-31
- c) Installed in covered area: IP-52
- d) Installed indoor in non air conditioned area where possibility of entry of water is limited: IP-41.
- e) For LT Switchgear (AC & DC distribution Boards) : IP-52

The degree of protection shall be in accordance with IS:13947 (Part-I) / IEC-60947(Part-I) / IS 12063 / IEC-60529. Type test report for degree of protection test, shall be submitted for approval.

6.3 RATING PLATES, NAME PLATES AND LABELS

Each main and auxiliary item of substation is to have permanently attached to it in a conspicuous position a rating plate of non-corrosive material upon which is to be engraved manufacturer's name, year of manufacture, equipment name, type or serial number together with details of the loading conditions under which the item of substation in question has been designed to operate, and such diagram plates as may be required by the Purchaser. The rating plate of each equipment shall be according to IEC requirement.

All such nameplates, instruction plates, rating plates of transformers, reactors, CB, CT, CVT, SA, Isolators, C & R panels and PLCC equipments shall be bilingual with Hindi inscription first followed by English. Alternatively two separate plates one with Hindi and the other with English inscriptions may be

provided.

6.4 FIRST FILL OF CONSUMABLES, OIL AND LUBRICANTS

All the first fill of consumables such as oils, lubricants, filling compounds, touch up paints, soldering/brazing material for all copper piping of circuit breakers and essential chemicals etc. which will be required to put the equipment covered under the scope of the specifications, into successful Operation, shall be furnished by the supplier unless specifically excluded under the exclusions in these specifications and documents.

7.0 DESIGN IMPROVEMENTS / COORDINATION

- 7.1 The bidder shall note that the equipment offered by him in the bid only shall be accepted for supply. However, the Purchaser or the Contractor may propose changes in the specification of the equipment or quality thereof and if the Purchaser & contractor agree upon any such changes, the specification shall be modified accordingly.
- 7.2 If any such agreed upon change is such that it affects the price and schedule of completion, the parties shall agree in writing as to the extent of any change in the price and/or schedule of completion before the Contractor proceeds with the change. Following such agreement, the provision thereof, shall be deemed to have been amended accordingly.
- 7.3 The supplier shall be responsible for the selection and design of appropriate equipments to provide the best co-ordinated performance of the entire system. The basic design requirements are detailed out in this Specification. The design of various components, sub-assemblies and assemblies shall be so done that it facilitates easy field assembly and maintenance.
- 7.4 The supplier has to coordinate designs and terminations with the agencies (if any) who are Consultants/Contractor for the Purchaser. The names of agencies shall be intimated to the successful bidders.
- 7.5 The supplier will be called upon to attend design co-ordination meetings with the Engineer, other Contractor's and the Consultants of the Purchaser (if any) during the period of Contract. The Contractor shall attend such meetings at his own cost at POWERGRID Corporate Centre, Gurgaon (Haryana) or at mutually agreed venue as and when required and fully cooperate with such persons and agencies involved during those discussions.

8.0 QUALITY ASSURANCE PROGRAMME

- 8.1 To ensure that the equipment and services under the scope of this Contract whether manufactured or performed within the supplier's Works or at his Sub-contractor's premises or at the Purchaser's site or at any other place of Work are in accordance with the specifications, the supplier shall adopt suitable quality assurance programme to control such activities at all points necessary. The detailed programme shall be submitted by the contractor after the award for reference. A quality assurance programme of the supplier shall generally cover the following:
 - (a) His organisation structure for the management and implementation of the proposed quality assurance programme:

- (b) Documentation control system;
- (c) Qualification data for bidder's key personnel;
- (d) The procedure for purchases of materials, parts components and selection of sub-Contractor's services including vendor analysis, source inspection, incoming raw material inspection, verification of material purchases etc.
- (e) System for shop manufacturing and site erection controls including process controls and fabrication and assembly control;
- (f) Control of non-conforming items and system for corrective actions;
- (g) Inspection and test procedure both for manufacture and field activities.
- (h) Control of calibration and testing of measuring instruments and field activities;
- (i) System for indication and appraisal of inspection status;
- (j) System for quality audits;
- (k) System for authorising release of manufactured product to the Purchaser.
- (l) System for maintenance of records;
- (m) System for handling storage and delivery; and
- (n) A quality plan detailing out the specific quality control measures and procedures adopted for controlling the quality characteristics relevant to each item of equipment furnished and/or services rendered.

POWERGRID/BHEL or his duly authorised representative reserves the right to carry out quality audit and quality surveillance of the system and procedure of the supplier/his vendor's quality management and control activities.

8.2 Quality Assurance Documents

The supplier would be required to submit all the Quality Assurance Documents as stipulated in the Quality Plan at the time of POWERGRID/BHEL inspection of equipment/material

9.0 TYPE TESTING, INSPECTION, TESTING & INSPECTION CERTIFICATE

- 9.1 All equipment being supplied shall conform to type tests as per technical specification and shall be subject to routine tests in accordance with requirements stipulated under respective sections.
- 9.2 The reports for all type tests as per technical specification shall be furnished by the supplier alongwith equipment / material drawings. However, type test reports of similar equipments/ material already accepted in POWERGRID shall be applicable for all project with similar requirement. The type tests conducted earlier should have either been conducted in accredited laboratory (accredited based on ISO / IEC Guide 25 / 17025 or EN 45001 by the national accreditation body of the country where laboratory is located) or witnessed by POWERGRID or representative authorized by POWERGRID or Utility or representative of accredited test lab or reputed consultant.

The test reports submitted shall be of the tests conducted within last 10 (ten) years prior to the date of bid opening i.e. 26.08.11. In case the test reports are of the test conducted earlier than 10 (ten) years prior to the date of bid opening, the contractor shall repeat these test(s) at no extra cost to BHEL.

However, in case of instrument transformers, the following type tests should have been conducted within 5 (five) years prior to the date of bid opening.

- i) Lightning Impulse Test
- ii) Switching Impulse Test
- iii) Multiple Chopped Impulse Test (For CT)
- iv) Chopped Impulse Test (For CVT)

In case the test reports are of these tests (for instrument transformers) as mentioned above are conducted earlier than 5 (five) years prior to the date of bid opening i.e. 26.08.11, the contractor shall repeat these test(s) at no extra cost to the purchaser.

Further, in the event of any discrepancy in the test reports i.e. any test report not acceptable due to any design/manufacturing changes (including substitution of components) or due to non-compliance with the requirement stipulated in the Technical Specification or any/all type tests not carried out, same shall be carried out without any additional cost implication to the Purchaser.

The supplier shall intimate the BHEL/POWERGRID the detailed program about the tests atleast two (2) weeks in advance in case of domestic supplies & six (6) weeks in advance in case of foreign supplies.

Further, in case type tests are required to be conducted/repeated and the deputation of Inspector/Purchaser's representative is required, then all the expenses shall be borne by the supplier.

9.3 The Purchaser intends to repeat the type tests on Power Transformer and Shunt Reactor except Dynamic short circuit tests on transformers, for which test charges shall be payable as per provision of contract. The price of conducting type tests shall be included in Bid price and break up of these shall be given in the relevant schedule of Bid Proposal Sheets. These Type test charges would be considered in bid evaluation. In case Bidder does not indicate charges for any of the type tests or does not mention the name of any test in the price schedules, it will be presumed that the particular test has been offered free of charge. Further, in case any Bidder indicates that he shall not carry out a particular test, his offer shall be considered incomplete and shall be liable to be rejected. BHEL/POWERGRID reserves the right to witness any or all the type tests. The BHEL/POWERGRID also reserves the right to waive the repeating of type tests partly or fully and in case of waiver, test charges for the same shall not be payable.

The Purchaser shall bear all expenses for deputation of purchaser's representative(s) for witnessing the type tests under this clause except in the case of re-deputation if any, necessitated due to no fault of the purchaser.

For outdoor receptacles, trefoil clamps, diesel engine, alternator, motors, cable glands, lighting fixtures, ACSR/AAC conductor, IPS aluminum tube and

junction boxes, type test reports are not required to be submitted for the makes indicated at Annexure-E /POWERGRID approved list of subvendors. For the new makes(other than those indicated at Annexure-E / POWERGRID approved list of subvendors), type test reports as per relevant standard shall be submitted for POWERGRID's approval.

- 9.4 The Purchaser, his duly authorised representative and/or outside inspection agency acting on behalf of the Purchaser shall have at all reasonable times free access to the Contractor's/sub-vendors premises or Works and shall have the power at all reasonable times to inspect and examine the materials and workmanship of the Works during its manufacture or erection if part of the Works is being manufactured or assembled at other premises or works, the Contractor shall obtain for the Engineer and for his duly authorised representative permission to inspect as if the works were manufactured or assembled on the Contractor's own premises or works. Inspection may be made at any stage of manufacture, despatch or at site at the option of the Purchaser and the equipment if found unsatisfactory due to bad workmanship or quality, material is liable to be rejected.
- 9.5 The supplier shall give the Purchaser /Inspector fifteen (15) days written notice for on-shore and six (6) weeks notice for off-shore material being ready for joint testing including contractor and POWERGRID. Such tests shall be to the Contractor's account except for the expenses of the Inspector. The Purchaser/inspector, unless witnessing of the tests is virtually waived, will attend such tests within fifteen (15) days of the date of which the equipment is notified as being ready for test/inspection, failing which the Contractor may proceed alone with the test which shall be deemed to have been made in the Inspector's presence and he shall forthwith forward to the Inspector duly certified copies of tests in triplicate.
- 9.6 The Purchaser or Inspector shall, within fifteen (15) days from the date of inspection as defined herein give notice in writing to the Contractor, of any objection to any drawings and all or any equipment and workmanship which in his opinion is not in accordance with the Contract. The Contractor shall give due consideration to such objections and shall either make the modifications that may be necessary to meet the said objections or shall confirm in writing to the Purchaser /Inspector giving reasons therein, that no modifications are necessary to comply with the Contract.
- 9.7 When the factory tests have been completed at the Contractor's or Sub- Contractor's works, the Purchaser/inspector shall issue a certificate to this effect within fifteen (15) days after completion of tests but if the tests are not witnessed by the Purchaser /Inspector, the certificate shall be issued within fifteen (15) days of receipt of the Contractor's Test certificate by the Engineer/Inspector. Failure of the Purchaser /Inspector to issue such a certificate shall not prevent the Contractor from proceeding with the Works. The completion of these tests or the issue of the certificate shall not bind the Purchaser to accept the equipment should, it, on further tests after erection, be found not to comply with the Contract. The equipment shall be dispatched to site only after approval of test reports and issuance of CIP by the Purchaser.

9.8 In all cases where the Contract provides for tests whether at the premises or at the works of the Contractor or of any Sub-Contractor, the Contractor except where otherwise specified shall provide free of charge such items as labour, materials, electricity, fuel, water, stores, apparatus and instruments as may be reasonably demanded by the Purchaser /Inspector or his authorised representative to carry out effectively such tests of the equipment in accordance with the Contract and shall give facilities to the Purchaser /Inspector or to his authorised representative to accomplish testing.

9.9 The inspection by Purchaser and issue of Inspection Certificate thereon shall in no way limit the liabilities and responsibilities of the Contractor in respect of the agreed quality assurance programme forming a part of the Contract.

9.10 The Purchaser will have the right of having at his own expenses any other test(s) of reasonable nature carried out at Contractor's premises or at site or in any other place in addition of aforesaid type and routine tests, to satisfy that the material comply with the specification.

9.11 The Purchaser reserves the right for getting any field tests not specified in respective sections of the technical specification conducted on the completely assembled equipment at site. The testing equipments for these tests shall be provided by the Purchaser.

10.0 TESTS

10.1 Pre-commissioning Tests

On completion of erection of the equipment and before charging, each item of the equipment shall be thoroughly cleaned and then inspected jointly by the Purchaser and the Contractor for correctness and completeness of installation and acceptability for charging, leading to initial pre-commissioning tests at Site. The list of pre-commissioning tests to be performed are given in respective chapters and shall be included in the Contractor's quality assurance programme.

10.2 Commissioning Tests

10.2.1 The available instrumentation and control equipment will to be used during such tests and the Purchaser will calibrate, all such measuring equipment and devices as far as practicable.

10.2.2 Any special equipment, tools and tackles required for the successful completion of the Commissioning Tests shall be provided by the Contractor, free of cost.

10.2.3 The specific tests requirement on equipment have been brought out in the respective chapters of the technical specification.

10.3 The Contractor shall be responsible for obtaining statutory clearances from the concerned authorities for commissioning the equipment and the switchyard. However necessary fee shall be reimbursed by POWERGRID on production of requisite documents.

11.0 PACKAGING & PROTECTION

11.1 All the equipments shall be suitably protected, coated, covered or boxed and crated to prevent damage or deterioration during transit, handling and storage at Site till the time of erection. On request of the Purchaser, the Contractor shall

also submit packing details/associated drawing for any equipment/material under his scope of supply, to facilitate the Purchaser to repack any equipment/material at a later date, in case the need arises. While packing all the materials, the limitation from the point of view of availability of Railway wagon sizes in India should be taken into account. The Contractor shall be responsible for any loss or damage during transportation, handling and storage due to improper packing. Any demurrage, wharfage and other such charges claimed by the transporters, railways etc. shall be to the account of the Contractor. Purchaser takes no responsibility of the availability of the wagons.

- 11.2 All coated surfaces shall be protected against abrasion, impact, discolouration and any other damages. All exposed threaded portions shall be suitably protected with either a metallic or a non-metallic protecting device. All ends of all valves and pipings and conduit equipment connections shall be properly sealed with suitable devices to protect them from damage.

12.0 FINISHING OF METAL SURFACES

- 12.1 All metal surfaces shall be subjected to treatment for anti-corrosion protection. All ferrous surfaces for external use unless otherwise stated elsewhere in the specification or specifically agreed, shall be hot-dip galvanized after fabrication. High tensile steel nuts & bolts and spring washers shall be electro galvanized to service condition 4. All steel conductors including those used for earthing/grounding (above ground level) shall also be galvanized according to IS:2629.

12.2 HOT DIP GALVANISING

- 12.2.1 The minimum weight of the zinc coating shall be 610 gm/sq.m and minimum average thickness of coating shall be 86 microns for all items having thickness 6mm and above. For items lower than 6mm thickness requirement of coating thickness shall be as per relevant ASTM. For surface which shall be embedded in concrete, the zinc coating shall be 610 gm/sq. m minimum.
- 12.2.2 The galvanized surfaces shall consist of a continuous and uniform thick coating of zinc, firmly adhering to the surface of steel. The finished surface shall be clean and smooth and shall be free from defects like discoloured patches, bare spots, unevenness of coating, spelter which is loosely attached to the steel globules, spiky deposits, blistered surface, flaking or peeling off, etc. The presence of any of these defects noticed on visual or microscopic inspection shall render the material liable to rejection.
- 12.2.3 After galvanizing. no drilling or welding shall be performed on the galvanized parts of the equipment excepting that nuts may be threaded after galvanizing. Sodium dichromate treatment shall be provided to avoid formation of white rust after hot dip galvanization.
- 12.2.4 The galvanized steel shall be subjected to six one minute dips in copper sulphate solution as per IS-2633.
- 12.2.5 Sharp edges with radii less than 2.5 mm shall be able to withstand four immersions of the Standard Preece test. All other coatings shall withstand six immersions. The following galvanizing tests should essentially be performed as per relevant Indian Standards.

- Coating thickness
- Uniformity of zinc
- Adhesion test
- Mass of zinc coating

12.2.6 Galvanised material must be transported properly to ensure that galvanised surfaces are not damaged during transit. Application of zinc rich paint at site shall not be allowed.

12.3 PAINTING

12.3.1 All sheet steel work shall be degreased, pickled, phosphated in accordance with the IS-6005 "Code of practice for phosphating iron and sheet". All surfaces, which will not be easily accessible after shop assembly, shall beforehand be treated and protected for the life of the equipment. The surfaces, which are to be finished painted after installation or require corrosion protection until installation, shall be shop painted with at least two coats of primer. Oil, grease, dirt and swaf shall be thoroughly removed by emulsion cleaning. Rust and scale shall be removed by pickling with dilute acid followed by washing with running water, rinsing with slightly alkaline hot water and drying.

12.3.2 After phosphating, thorough rinsing shall be carried out with clean water followed by final rinsing with dilute dichromate solution and oven drying. The phosphate coating shall be sealed with application of two coats of ready mixed, stoving type zinc chromate primer. The first coat may be "flash dried" while the second coat shall be stoved.

12.3.3 After application of the primer, two coats of finishing synthetic enamel paint shall be applied, each coat followed by stoving. The second finishing coat shall be applied after inspection of first coat of painting.

12.3.4 The exterior and interior colour of the paint in case of new substations shall preferably be RAL 7032 for all equipment, marshalling boxes, junction boxes, control cabinets, panels etc. unless specifically mentioned under respective sections of the equipments. Glossy white colour inside the equipments /boards/panels/junction boxes is also acceptable. The exterior colour for panels shall bematching with the existing panels in case of extension of a substation. Each coatof primer and finishing paint shall be of slightly different shade to enable inspection of the painting. A small quantity of finishing paint shall be supplied for minor touching up required at site after installation of the equipments.

12.3.5 In case the Bidder proposes to follow his own standard surface finish and protection procedures or any other established painting procedures, like electrostatic painting etc., the procedure shall be submitted alongwith the Bids for Purchaser's review & approval.

12.3.6 The colour scheme as given below shall be followed for Fire Protection and Air Conditioning systems

S.No.	PIPE LINE	Base colour	Band colour

Fire Protection System			
1	Hydrant and Emulsifier system pipeline	FIRE RED	-
2	Emulsifier system detection line – water	FIRE RED	Sea Green
3	Emulsifier system detection line – Air	FIRE RED	Sky Blue
4	Pylon support pipes	FIRE RED	
Air Conditioning System			
5	Refrigerant gas pipeline – at compressor suction	Canary Yellow	-
6	Refrigerant gas pipeline – at compressor discharge	Canary Yellow	Red
7	Refrigerant liquid pipeline	Dark Admiralty Green	-
8	Chilled water pipeline	Sea Green	-
9	Condenser water pipeline	Sea Green	Dark Blue

12.3.7 For aluminium casted surfaces, the surface shall be with smooth finish. Further, in case of aluminium enclosures the surface shall be coated with powder (coating thickness of 60 microns) after surface preparation for painting.

13.0 HANDLING, STORING AND INSTALLATION

13.1 In accordance with the specific installation instructions as shown on manufacturer's drawings or as directed by the Purchaser or his representative, the Contractor shall unload, store, erect, install, wire, test and place into commercial use all the equipment included in the contract. Equipment shall be installed in a neat, workmanlike manner so that it is level, plumb, square and properly aligned and oriented. Commercial use of switchyard equipment means completion of all site tests specified and energisation at rated voltage.

13.2 Contractor may engage manufacturer's Engineers to supervise the unloading, transportation to site, storing, testing and commissioning of the various equipment being procured by them separately. Contractor shall unload, transport, store, erect, test and commission the equipment as per instructions of the manufacturer's supervisory Engineer(s) and shall extend full cooperation to them.

13.3 The contractor shall have to ensure that the hard and flat indoor and outdoor storage areas are in place prior to commencement of delivery of material at site. Contractor shall also ensure availability of proper unloading and material handling equipment like cranes etc. and polyester/nylon ropes of suitable capacity to avoid damage during unloading and handling of material at site. All indoor equipments shall be stored indoors. Outdoor equipment may be stored outdoors but on a hard and flat raised area properly covered with waterproof and dustproof covers to protect them from water seepage and moisture ingress. However, all associated control panels, marshalling boxes operating boxes etc. of outdoor equipments are to be stored indoors only. Storage of equipment on top of another one is not permitted if the wooden packing is used. Material opened for joint inspection shall be repacked properly as per manufacturer's recommendations. During storage of material regular periodic monitoring of

important parameters like oil level / leakage, SF6 / Nitrogen pressure etc. shall be ensured by the contractor.

- 13.4 In case of any doubt/misunderstanding as to the correct interpretation of manufacturer's drawings or instructions, necessary clarifications shall be obtained from the Purchaser. Contractor shall be held responsible for any damage to the equipment consequent to not following manufacturer's drawings/instructions correctly.
- 13.5 Where assemblies are supplied in more than one section, Contractor shall make all necessary mechanical and electrical connections between sections including the connection between buses. Contractor shall also do necessary adjustments/alignments necessary for proper operation of circuit breakers, isolators and their operating mechanisms. All components shall be protected against damage during unloading, transportation, storage, installation, testing and commissioning. Any equipment damaged due to negligence or carelessness or otherwise shall be replaced by the Contractor at his own expense.
- 13.6 Supplier shall be responsible for examining all the shipment and notify the Purchaser immediately of any damage, shortage, discrepancy etc. for the purpose of Purchaser's information only. The Contractor shall submit to the Purchaser every week a report detailing all the receipts during the weeks. However, the Contractor shall be solely responsible for any shortages or damages in transit, handling and/or in storage and erection of the equipment at Site. Any demurrage, wharfage and other such charges claimed by the transporters, railways etc. shall be to the account of the Contractor.
- 13.7 The supplier shall be fully responsible for the equipment/material until the same is handed over to the Purchaser in an operating condition after commissioning. Contractor shall be responsible for the maintenance of the equipment/material while in storage as well as after erection until taken over by Purchaser, as well as protection of the same against theft, element of nature, corrosion, damages etc.
- 13.8 Where material / equipment is unloaded by Purchaser before the Contractor arrives at site or even when he is at site, Purchaser by right can hand over the same to Contractor and there upon it will be the responsibility of Contractor to store the material in an orderly and proper manner.
- 13.9 The Contractor shall be responsible for making suitable indoor storage facilities, to store all equipment which requires indoor storage.
- 13.10 The words 'erection' and 'installation' used in the specification are synonymous.
- 13.11 Exposed live parts shall be placed high enough above ground to meet the requirements of electrical and other statutory safety codes.
- 13.12 Equipment Bases
- A cast iron or welded steel base plate shall be provided for all rotating equipment which is to be installed on a concrete base unless otherwise agreed to by the Purchaser. Each base plate shall support the unit and its drive assembly,

shall be of a neat design with pads for anchoring the units, shall have a raised lip all around, and shall have threaded drain connections.

14.0 TOOLS AND TACKLES

The Contractor shall supply with the equipment one complete set of all special tools and tackles for the erection, assembly, dis-assembly and maintenance of the equipment. However, these tools and tackles shall be separately, packed and brought on to Site.

15.0 AUXILIARY SUPPLY

- 15.1 The sub-station auxiliary supply is normally met through a system indicated under section "Electrical & Mechanical Auxiliaries" having the following parameters. The auxiliary power for station supply, including the equipment drive, cooling system of any equipment, air-conditioning, lighting etc shall be designed for the specified Parameters as under. The DC supply for the instrumentation and PLCC system shall also conform the parameters as indicated in the following.

Normal Voltage	Variation in Voltage	Frequency in HZ	Phase/Wire	Neutral connection
415V	± 10%	50 ± 5%	3/4 Wire	Solidly Earthed.
240V	± 10%	50 ± 5%	1/2 Wire	Solidly Earthed.
220V	190V to 240V	DC	-	Isolated 2 wire System
48V	-	DC	-	2 wire system (+) earthed

Combined variation of voltage and frequency shall be limited to ± 10%.

16.0 SUPPORT STRUCTURE (If in the scope of supplier)

- 16.1 The equipment support structures shall be suitable for equipment connections at the first level i.e 14.0 meter, 8.0 meter and 5.9 meter from plinth level for 765 kV, 420 kV and 245 kV substations respectively. All equipment support structures shall be supplied alongwith brackets, angles, stools etc. for attaching the operating mechanism, control cabinets & marshalling box (wherever applicable) etc.

16.2 Support structure shall meet the following mandatory requirements:

- 16.2.1 The minimum vertical distance from the bottom of the lowest porcelain part of the bushing, porcelain enclosures or supporting insulators to the bottom of the equipment base, where it rests on the foundation pad shall be 2.55 metres.

17.0 CLAMPS AND CONNECTORS INCLUDING TERMINAL CONNECTORS

- 17.1 All power clamps and connectors shall conform to IS:5561 & NEMA CC1 and shall be made of materials listed below :

- | | | |
|----|--|---|
| a) | For connecting ACSR conductors | Aluminum alloy casting, conforming to designation A6 of IS:617 and all test shall conform to IS:617 |
| b) | For connecting equipment terminals made of copper with | Bimetallic connectors made from aluminum alloy casting, conforming to designation A6 of IS:617 with 2mm thick |

ACSR conductors

bimetallic liner and all test
shall conform to IS:617

c) For connecting G.I

Galvanised mild steel shield

d) i) Bolts, nuts &
Plain, washers

i) Electro-galvanised for sizes
below M12, for others hot dip
galvanised.

ii) Spring washers
items
'a' to 'c'

ii) Electro-galvanised mild for
steel suitable for atleast
service condition-3 as per
IS:1573

17.2 Necessary clamps and connectors shall be supplied for all equipment and connections. The requirement regarding external corona and RIV as specified for any equipment shall include its terminal fittings. If corona rings are required to meet these requirements they shall be considered as part of that equipment and included in the scope of work.

17.3 Where copper to aluminum connections are required, bi-metallic clamps shall be used, which shall be properly designed to ensure that any deterioration of the connection is kept to a minimum and restricted to parts which are not current carrying or subjected to stress.

17.4 Low voltage connectors, grounding connectors and accessories for grounding allequipment as specified in each particular case, are also included in the scope of Work.

17.5 No current carrying part of any clamp shall be less than 10 mm thick. All ferrous parts shall be hot dip galvanised. Copper alloy liner of minimum 2 mm thickness shall be cast integral with aluminum body or 2 mm thick bi-metallic strips shall be provided for Bi-metallic clamps.

17.6 All casting shall be free from blow holes, surface blisters, cracks and cavities. All sharp edges and corners shall be blurred and rounded off.

17.7 Flexible connectors, braids or laminated straps made for the terminal clamps for bus posts shall be suitable for both expansion or through (fixed/sliding) type connection of 4" IPS AL. tube as required. In both the cases the clamp height (top of the mounting pad to centre line of the tube) should be same.

17.8 Clamp shall be designed to carry the same current as the conductor and the temperature rise shall be equal or less than that of the conductor at the specified ambient temperature. The rated current for which the clamp/connector is designed with respect to the specified reference ambient temperature, shall also be indelibly marked on each component of the clamp/connector, except on the hardware.

17.9 All current carrying parts shall be designed and manufactured to have minimum contact resistance.

17.10 Clamps and connectors shall be designed to be corona controlled.

17.11 Tests

17.11.1 Clamps and connectors should be type tested as per IS:5561 and shall also be subjected to routine tests as per IS:5561. Following type test reports shall be submitted for approval as per clause 9.2 above except for sl. no.(ii) &

(iii) for which type test once conducted shall be applicable (i.e. the requirement of test conducted within last ten years shall not be applicable).

- i) Temperature rise test (maximum temperature rise allowed is 35°C over 50°C ambient)
- ii) Short time current test
- iii) Corona (dry) and RIV (dry) test (for 220 KV and above voltage level clamps)
- iv) Resistance test and tensile test

18.0 CONTROL CABINETS, JUNCTION BOXES, TERMINAL BOXES & MARSHALLING BOXES FOR OUTDOOR EQUIPMENT

- 18.1 All types of boxes, cabinets etc. shall generally conform to & be tested in accordance with IS-5039/IS-8623, IEC-60439, as applicable, and the clauses given below:
- 18.2 Control cabinets, junction boxes, Marshalling boxes & terminal boxes shall be made of sheet steel or aluminum enclosure and shall be dust, water and vermin proof. Sheet steel used shall be atleast 2.0 mm thick cold rolled or 2.5 mm hot rolled or alternately 1.6 mm thick stainless steel can also be used. The box shall be properly braced to prevent wobbling. There shall be sufficient reinforcement to provide level surfaces, resistance to vibrations and rigidity during transportation and installation. In case of aluminum enclosed box the thickness of aluminum shall be such that it provides adequate rigidity and long life as comparable with sheet steel of specified thickness.
- 18.3 A canopy and sealing arrangements for operating rods shall be provided inmarshalling boxes / Control cabinets to prevent ingress of rain water.
- 18.4 Cabinet/boxes shall be provided with double hinged doors with padlocking arrangements. The distance between two hinges shall be adequate to ensure uniform sealing pressure against atmosphere. The quality of the gasket shall be such that it does not get damaged/cracked during the operation of the equipment.
- 18.5 All doors, removable covers and plates shall be gasketed all around with suitably profiled EPDM/Neoprene gaskets. The gasket shall be tested in accordance with approved quality plan, IS:11149 and IS:3400. Ventilating Louvers, if provided, shall have screen and filters. The screen shall be fine wire mesh made of brass.
- 18.6 All boxes/cabinets shall be designed for the entry of cables from bottom by means of weather proof and dust-proof connections. Boxes and cabinets shall be designed with generous clearances to avoid interference between the wiring entering from below and any terminal blocks or accessories mounted within the box or cabinet. Suitable cable gland plate above the base of the marshalling kiosk/box shall be provided for this purpose along with the proper blanking plates. Necessary number of cable glands shall be supplied and fitted on this gland plate. Gland plate shall have provision for some future glands to be provided later, if required. The Nickel plated glands shall be dust proof, screw on & double compression type and made of brass. The gland shall have provision for securing armour of the cable separately and shall be provided with earthing tag. The glands shall conform to BS:6121.

- 18.7 A 240V, single phase, 50 Hz, 15 amp AC plug and socket shall be provided in the cabinet with ON-OFF switch for connection of hand lamps. Plug and socket shall be of industrial grade.
- 18.8 For illumination, a fluorescent tube or CFL of approximately 9 to 15 watts shall be provided. The switching of the fittings shall be controlled by the door switch. .
For junction boxes of smaller sizes such as lighting junction box, manual operated earth switch mechanism box etc., plug socket, heater and illumination is not required to be provided.
- 18.9 All control switches shall be of MCB/rotary switch type and Toggle/piano switches shall not be accepted.
- 18.10 Positive earthing of the cabinet shall be ensured by providing two separate earthing pads. The earth wire shall be terminated on to the earthing pad and secured by the use of self etching washer. Earthing of hinged door shall be done by using a separate earth wire.
- 18.11 The bay marshalling kiosks shall be provided with danger plate and a diagram showing the numbering/connection/feruling by pasting the same on the inside of the door.
- 18.12 a) The following routine tests alongwith the routine tests as per IS:5039 shall also be conducted:
i) Check for wiring
ii) Visual and dimension check
b) The enclosure of bay marshalling kiosk, junction box, terminal box shall conform to IP-55 as per IS:13947 including application of, 2.5 KV rms for 1 (one) minute, insulation resistance and functional test after IP-55 test.
- 19.0 Deleted.
- 20.0 TERMINAL BLOCKS AND WIRING**
- 20.1 Control and instrument leads from the switchboards or from other equipment will be brought to terminal boxes or control cabinets in conduits. All interphase and external connections to equipment or to control cubicles will be made through terminal blocks.
- 20.2 Terminal blocks shall be 650V grade and have continuous rating to carry the maximum expected current on the terminals and non breakable type. These shall be of moulded piece, complete with insulated barriers, stud type terminals, washers, nuts and lock nuts. Screw clamp, overall insulated, insertion type, rail mounted terminals can be used in place of stud type terminals. But preferably the terminal blocks shall be non-disconnecting stud type of Elmex or Phoenix or Wago or equivalent make.
- 20.3 Terminal blocks for current transformer and voltage transformer secondary leads shall be provided with test links and isolating facilities. The current transformer secondary leads shall also be provided with short circuiting and earthing facilities.
- 20.4 The terminal shall be such that maximum contact area is achieved when a cable is terminated. The terminal shall have a locking characteristic to prevent cable from escaping from the terminal clamp unless it is done intentionally.

- 20.5 The conducting part in contact with cable shall preferably be tinned or silver plated however Nickel plated copper or zinc plated steel shall also be acceptable.
- 20.6 The terminal blocks shall be of extensible design.
- 20.7 The terminal blocks shall have locking arrangement to prevent its escape from the mounting rails.
- 20.8 The terminal blocks shall be fully enclosed with removable covers of transparent, non-deteriorating type plastic material. Insulating barriers shall be provided between the terminal blocks. These barriers shall not hinder the operator from carrying out the wiring without removing the barriers.
- 20.9 Unless otherwise specified terminal blocks shall be suitable for connecting the following conductors on each side.
- | | | |
|----|------------------------------------|--|
| a) | All circuits except CT/PT circuits | Minimum of two of 2.5 sq mm copper flexible. |
| b) | All CT/PT circuits | Minimum of 4 nos. of 2.5 sq copper flexible. |
- 20.10 The arrangements shall be in such a manner so that it is possible to safely connect or disconnect terminals on live circuits and replace fuse links when the cabinet is live.
- 20.11 At least 20 % spare terminals shall be provided on each panel/cubicle/box and these spare terminals shall be uniformly distributed on all terminals rows.
- 20.12 There shall be a minimum clearance of 250 mm between the First/bottom row of terminal block and the associated cable gland plate for outdoor ground mounted marshalling box and the clearance between two rows of terminal blocks shall be a minimum of 150 mm.
- 20.13 The supplier shall furnish all wire, conduits and terminals for the necessary interphase electrical connections (where applicable) as well as between phases and common terminal boxes or control cabinets. For equipments rated for 400 kV and above the wiring required in these items shall be run in metallic ducts or shielded cables in order to avoid surge overvoltages either transferred through the equipment or due to transients induced from the EHV circuits.
- 20.14 All input and output terminals of each control cubicle shall be tested for surge withstand capability in accordance with the relevant IEC Publications, in both longitudinal and transverse modes. The Contractor shall also provide all necessary filtering, surge protection, interface relays and any other measures necessary to achieve an impulse withstand level at the cable interfaces of the equipment.
- 21.0 LAMPS & SOCKETS**
- 21.1 Sockets**
- All sockets (convenience outlets) shall be suitable to accept both 5 Amp & 15 Amp pin round Standard Indian plugs. They shall be switched sockets with shutters.
- 21.2 Hand Lamp:**
- A 240 Volts, single Phase, 50 Hz AC plug point shall be provided in the interior of each cubicle with ON-OFF Switch for connection of hand lamps.
- 21.3 Switches and Fuses:**

- 21.3.1 Each panel shall be provided with necessary arrangements for receiving, distributing, isolating and fusing of DC and AC supplies for various control, signalling, lighting and space heater circuits. The incoming and sub-circuits shall be separately provided with miniature circuit breaker / switchfuse units. Selection of the main and Sub-circuit fuse ratings shall be such as to ensure selective clearance of sub-circuit faults. Potential circuits for relaying and metering shall be protected by HRC fuses.
- 21.3.2 All fuses shall be of HRC cartridge type conforming to IS:9228 mounted on plug-in type fuse bases. Miniature circuit breakers with thermal protection and alarm contacts will also be accepted. All accessible live connection to fuse bases shall be adequately shrouded. Fuses shall have operation indicators for indicating blown fuse condition. Fuse carrier base shall have imprints of the fuse rating and voltage.

22.0 Bushings, Hollow Column Insulators, Support Insulators:

- 22.1 Bushings shall be manufactured and tested in accordance with IS:2099 & IEC-60137 while hollow column insulators shall be manufactured and tested in accordance with IEC-62155/IS:5621. The support insulators shall be manufactured and tested as per IS:2544/IEC-60168 and IEC-60273. The insulators shall also conform to IEC-60815 as applicable. The bidder may also offer composite hollow insulators, conforming to IEC-61462.
- 22.2 Support insulators, bushings and hollow column insulators shall be manufactured from high quality porcelain. Porcelain used shall be homogeneous, free from laminations, cavities and other flaws or imperfections that might affect the mechanical or dielectric quality and shall be thoroughly vitrified tough and impervious to moisture.
- 22.3 Glazing of the porcelain shall be uniform brown in colour, free from blisters, burrs and similar other defects.
- 22.4 Support insulators/bushings/hollow column insulators shall be designed to have ample insulation, mechanical strength and rigidity for the conditions under which they will be used.
- 22.5 When operating at normal rated voltage there shall be no electric discharge between the conductors and bushing which would cause corrosion or injury to conductors, insulators or supports by the formation of substances produced by chemical action. No radio interference shall be caused by the insulators/bushings when operating at the normal rated voltage.
- 22.6 Bushing porcelain shall be robust and capable of withstanding the internal pressures likely to occur in service. The design and location of clamps and the shape and the strength of the porcelain flange securing the bushing to the tank shall be such that there is no risk of fracture. All portions of the assembled porcelain enclosures and supports other than gaskets, which may in any way be exposed to the atmosphere shall be composed of completely non hygroscopic material such as metal or glazed porcelain.
- 22.7 All iron parts shall be hot dip galvanised and all joints shall be air tight. Surface of joints shall be trued up porcelain parts by grinding and metal parts by machining. Insulator/bushing design shall be such as to ensure a uniform

compressive pressure on the joints.

22.8 Tests

In bushing, hollow column insulators and support insulators shall conform to type tests and shall be subjected to routine tests in accordance with IS: 2099 & IS:2544 & IS : 5621.

23.0 MOTORS

Motors shall be "Squirrel Cage" three phase induction motors of sufficient size capable of satisfactory operation for the application and duty as required for the driven equipment and shall be subjected to routine tests as per applicable standards. The motors shall be of approved make.

23.1 Enclosures

- a) Motors to be installed outdoor without enclosure shall have hose proof enclosure equivalent to IP-55 as per IS: 4691. For motors to be installed indoor i.e. inside a box, the motor enclosure, shall be dust proof equivalent to IP-44 as per IS: 4691.
- b) Two independent earthing points shall be provided on opposite sides of the motor for bolted connection of earthing conductor.
- c) Motors shall have drain plugs so located that they will drain water resulting from condensation or other causes from all pockets in the motor casing.
- d) Motors weighing more than 25 Kg. shall be provided with eyebolts, lugs or other means to facilitate lifting.

23.2 Operational Features

- a) Continuous motor rating (name plate rating) shall be at least ten (10) percent above the maximum load demand of the driven equipment at design duty point and the motor shall not be over loaded at any operating point of driven equipment that will rise in service.
- b) Motor shall be capable at giving rated output without reduction in the expected life span when operated continuously in the system having the particulars as given in Clause 15.0 of this Section.

23.3 Starting Requirements:

- a) All induction motors shall be suitable for full voltage direct-on-line starting. These shall be capable of starting and accelerating to the rated speed alongwith the driven equipment without exceeding the acceptable winding temperature even when the supply voltage drops down to 80% of the rated voltage.
- b) Motors shall be capable of withstanding the electrodynamic stresses and heating imposed if it is started at a voltage of 110% of the rated value.
- c) The locked rotor current shall not exceed six (6) times the rated full load current for all motors, subject to tolerance as given in IS:325.
- d) Motors when started with the driven equipment imposing full starting torque under the supply voltage conditions specified under Clause 15.0 shall be capable of withstanding atleast two successive starts from cold condition at room temperature and one start from hot condition without injurious heating of winding. The motors shall also be suitable for three

equally spread starts per hour under the above referred supply condition.

- e) The locked rotor withstand time under hot condition at 110% of rated voltage shall be more than starting time with the driven equipment of minimum permissible voltage by at least two seconds or 15% of the accelerating time whichever is greater. In case it is not possible to meet the above requirement, the Bidder shall offer centrifugal type speed switch mounted on the motor shaft which shall remain closed for speed lower than 20% and open for speeds above 20% of the rated speed. The speed switch shall be capable of withstanding 120% of the rated speed in either direction of rotation.

23.4 Running Requirements:

- a) The maximum permissible temperature rise over the ambient temperature of 50 degree C shall be within the limits specified in IS:325 (for 3 - phase induction motors) after adjustment due to increased ambient temperature specified.
- b) The double amplitude of motor vibration shall be within the limits specified in IS: 4729. Vibration shall also be within the limits specified by the relevant standard for the driven equipment when measured at the motor bearings.
- c) All the induction motors shall be capable of running at 80% of rated voltage for a period of 5 minutes with rated load commencing from hot condition.

23.5 TESTING AND COMMISSIONING

An indicative list of tests is given below. Contractor shall perform any additional test based on specialities of the items as per the field Q.P./Instructions of the equipment Contractor or Purchaser without any extra cost to the Purchaser. The Contractor shall arrange all instruments required for conducting these tests alongwith calibration certificates and shall furnish the list of instruments to the Purchaser for approval.

- (a) Insulation resistance.
- (b) Phase sequence and proper direction of rotation.
- (c) Any motor operating incorrectly shall be checked to determine the cause and the conditions corrected.

ANNEXURE-A

CORONA AND RADIO INTERFERENCE VOLTAGE (RIV) TEST

1. General

Unless otherwise stipulated, all equipment together with its associated

connectors, where applicable, shall be tested for external corona (for 400kV & above) both by observing the voltage level for the extinction of visible corona under falling power frequency voltage and by measurement of radio interference voltage (RIV) for 132kV and above.

2. Test Levels:

The test voltage levels for measurement of external RIV and for corona extinction voltage are listed under the relevant clauses of the specification.

3. Test Methods for RIV:

- 3.1 RIV tests shall be made according to measuring circuit as per International Special-Committee on Radio Interference (CISPR) Publication 16-1(1993) Part -1. The measuring circuit shall preferably be tuned to frequency with 10% of 0.5 Mhz but other frequencies in the range of 0.5 MHz to 2 MHz may be used, the measuring frequency being recorded. The results shall be in microvolts.
- 3.2 Alternatively, RIV tests shall be in accordance with NEMA standard Publication No. 107-1964, except otherwise noted herein.
- 3.3 In measurement of, RIV, temporary additional external corona shielding may be provided. In measurements of RIV only standard fittings of identical type supplied with the equipment and a simulation of the connections as used in the actual installation will be permitted in the vicinity within 3.5 meters of terminals.
- 3.4 Ambient noise shall be measured before and after each series of tests to ensure that there is no variation in ambient noise level. If variation is present, the lowest ambient noise level will form basis for the measurements. RIV levels shall be measured at increasing and decreasing voltages of 85%, 100%, and 110% of the specified RIV test voltage for all equipment unless otherwise specified. The specified RIV test voltage for 765kV, 400 kV, 220 KV is listed in the detailed specification together with maximum permissible RIV level in microvolts.
- 3.5 The metering instruments shall be as per CISPR recommendation or equivalent device so long as it has been used by other testing authorities.
- 3.6 The RIV measurement may be made with a noise meter. A calibration procedure of the frequency to which noise meter shall be tuned shall establish the ratio of voltage at the high voltage terminal to voltage read by noise meter.

4. Test Methods for Visible Corona

The purpose of this test is to determine the corona extinction voltage of apparatus, connectors etc. The test shall be carried out in the same manner as RIV test described above with the exception that RIV measurements are not required during test and a search technique shall be used near the onset and extinction voltage, when the test voltage is raised and lowered to determine their precise values. The test voltage shall be raised to 110% of specified corona extinction voltage and maintained there for five minutes. In case corona inception does not take place at 110%, test

shall be stopped, otherwise test shall be continued and the voltage will then be decreased slowly until all visible corona disappears. The procedure shall be repeated at least 4 times with corona inception and extinction voltage recorded each time. The corona extinction voltage for purposes of determining compliance with the specification shall be the lowest of the four values at which visible corona (negative or positive polarity) disappears. Photographs with laboratory in complete darkness shall be taken under test conditions, at all voltage steps i.e. 85%, 100%, and 110%. Additional photographs shall be taken at corona inception and extinction voltages. At least two views shall be photographed in each case using Panchromatic film with an ASA daylight rating of 400 with an exposure of two minutes at a lens aperture of f/5.6 or equivalent. The photographic process shall be such that prints are available for inspection and comparison with conditions as determined from direct observation. Photographs shall be taken from above and below the level of connector so as to show corona on bushing, insulators and all parts of energised connectors. The photographs shall be framed such that test object essentially, fills the frame with no cut-off.

For recording purpose, modern devices utilizing UV recording methods such as image intensifier may also be used.

- 4.1 The test shall be recorded on each photograph. Additional photograph shall be taken from each camera position with lights on to show the relative position of test object to facilitate precise corona location from the photographic evidence.
- 4.2 In addition to photographs of the test object preferably four photographs shall be taken of the complete test assembly showing relative positions of all the test equipment and test objects. These four photographs shall be taken from four points equally spaced around the test arrangement to show its features from all sides. Drawings of the laboratory and test set up locations shall be provided to indicate camera positions and angles. The precise location of camera shall be approved by Purchaser's inspector, after determining the best camera locations by trial energisation of test object at a voltage which results in corona.
- 4.3 The test to determine the visible corona extinction voltage need not be carried out simultaneously with test to determine RIV levels.
- 4.4 However, both test shall be carried out with the same test set up and as little time duration between tests as possible. No modification on treatment of the sample between tests will be allowed. Simultaneous RIV and visible corona extinction voltage testing may be permitted at the discretion of Purchaser's inspector if, in his opinion, it will not prejudice other test.

5. **Test Records:**

In addition to the information previously mentioned and the requirements specified as per CISPR or NEMA 107-1964 the following data shall be included in test report:

- a) Background noise before and after test.
- b) Detailed procedure of application of test voltage.

- c) Measurements of RIV levels expressed in micro volts at each level.
- d) Results and observations with regard to location and type of interference sources detected at each step.
- e) Test voltage shall be recorded when measured RIV passes through 100microvolts in each direction.
- f) Onset and extinction of visual corona for each of the four tests required shall be recorded.

SEISMIC WITHSTAND TEST PROCEDURE

The seismic withstanding test on the complete equipment (for 132kV and above) shall be carried out along with supporting structure.

The Bidder shall arrange to transport the structure from his Contractor's premises/POWERGRID sites for the purpose of seismic withstand test only. The seismic level specified shall be applied at the base of the structure. The accelerometers shall be provided at the Terminal Pad of the equipment and any other point as agreed by the Purchaser. The seismic test shall be carried out in all possible combinations of the equipment. The seismic test procedure shall be furnished for approval of the POWERGRID.

ANNEXURE - A
SCHEDULE OF TECHNICAL DEVIATIONS

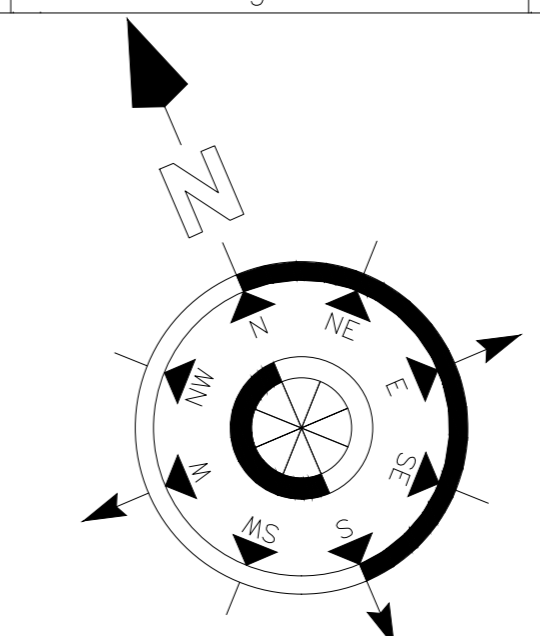
Bidder shall list below all technical deviation clause wise w.r.t. tender specifications:

<u>S.No.</u>	<u>Page No.</u>	<u>Clause No.</u>	<u>Deviation</u>	<u>Reason / Justification</u>
--------------	-----------------	-------------------	------------------	-------------------------------

Any deviation not specifically brought out in this section shall not be admissible for any commercial implication at later stage. Except to the technical deviations listed in this schedule, bidder's offer shall be considered in full compliance to the tender specifications irrespective of any such deviation indicated / taken elsewhere in the submitted offer.

Date:

Tenderer's Stamp & Signature



BILL OF QUANTITY - 400KV

Table with 4 columns: ITEM CODE, DESCRIPTION, SYMBOL, QTY. Lists electrical components like SF6 circuit breakers, isolators, transformers, surge arresters, etc.

SYSTEM PARAMETERS (765KV)-

Table with 4 columns: S.No., DESCRIPTION OF PARAMETER, 765KV SYSTEM, 400KV SYSTEM, 36KV SYSTEM. Lists parameters like highest system voltage, normal system voltage, rated frequency, etc.

CONDUCTOR & STRINGING DETAILS -765KV

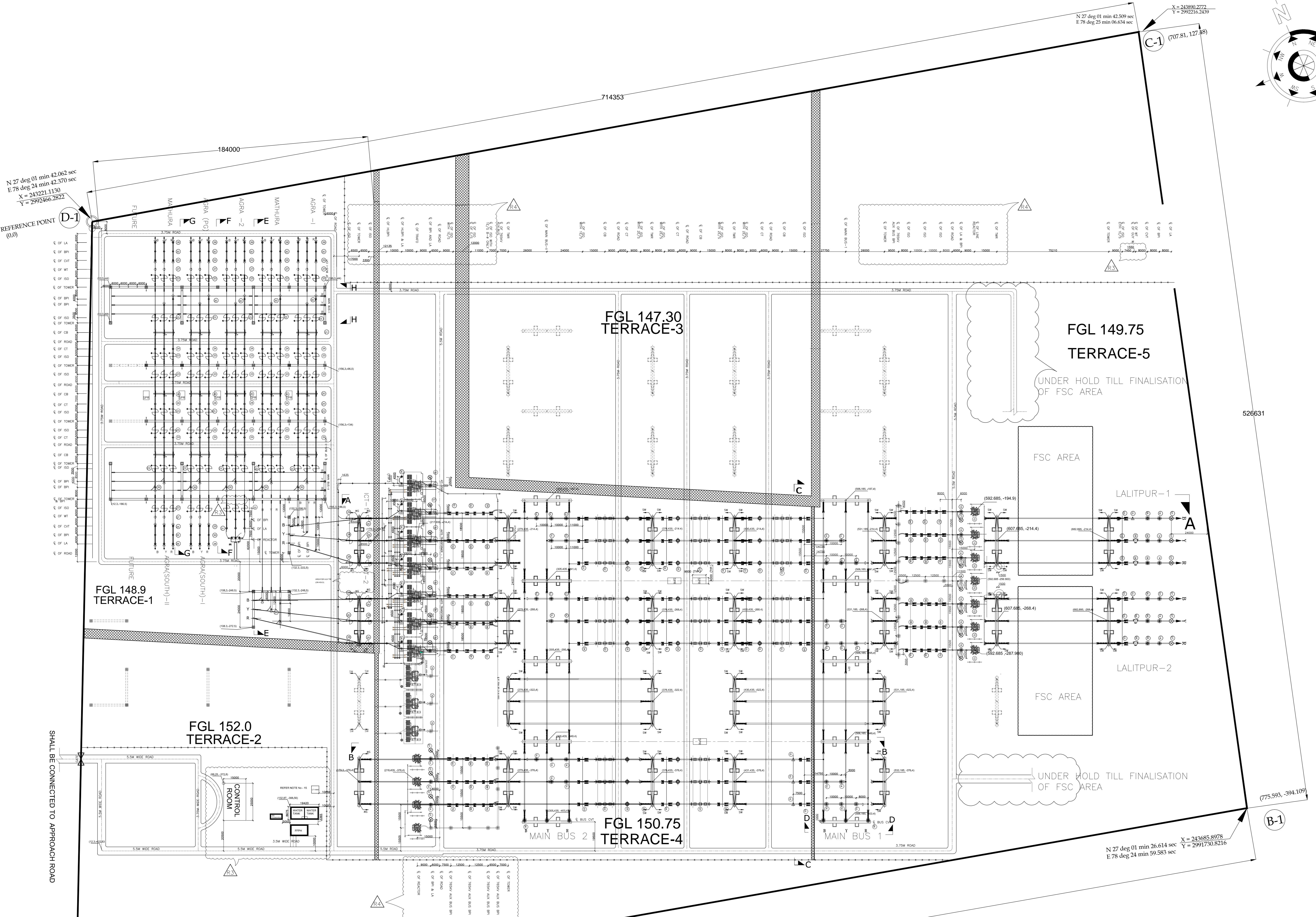
Table with 4 columns: SLD.NO., DESCRIPTION, LEVEL FROM PLINTH, SUB-CONDUCTOR, TENSION INSULATOR STRING/PHASE. Details conductor specifications for 765KV.

CONDUCTOR & STRINGING DETAILS -400KV

Table with 4 columns: SLD.NO., DESCRIPTION, LEVEL FROM PLINTH, SUB-CONDUCTOR, TENSION INSULATOR STRING/PHASE. Details conductor specifications for 400KV.

NOTES:-

- 1. LEVELS FOR SWITCHYARD ARE AS PER POWER GRID DRG-NO C/ENCG/NR/AGRA/UPPCL/STELV/01 REV-01
2. DEAD END TOWER ERECTION AND OUTGOING STRINGING OF LINE CONDUCTOR & SHIELD WIRE ARE NOT IN BHEL SCOPE BUT CONNECTION OF EQUIPMENT TOWARDS LINE SIDE SHALL BE DONE BY BHEL. SUPPLY OF TENSION INSULATOR STRING ON LINE SIDE OF TAKE OFF GANTRY IS IN BHEL SCOPE OF WORK.
3. SUPPLY ERECTION, TESTING & COMMISSIONING OF 765KV TRAF0 & REACTOR (INCLUDING TERMINAL CONNECTOR OF TRAF0 & REACTOR) & (NGR, 132KV LA, 33KV NOT & TERM. CONNECTOR OF REACTOR), FORMATION OF HV, LV, TERTIARY, NEUTRAL & AUXILIARY BUSES ALONG WITH BPI & ITS STRUCTURE AND ASSOCIATED CIVIL WORKS IS NOT COVERED IN SCOPE OF WORK AS PER IS SECTION PROJECT.
4. INTER EQUIPMENT DIMENSION ARE PLANNED SO AS TO ACHIEVE REQUIRED PHYSICAL AND ELECTRICAL CLEARANCE. HOWEVER IF ELECTRICAL CLEARANCE ARE NOT AVAILABLE AT SITE AND MODIFICATIONS ARE REQUIRED TO ACHIEVE IT, THE REQUIRED MODIFICATION WILL BE DONE BY BHEL WITHOUT ANY EXTRA COST IMPLICATION TO OWNER.
5. FIRE RESISTANT WALL BETWEEN 765KV TRANSFORMER UNITS AND 765KV REACTORS UNITS ARE NOT IN BHEL SCOPE.
6. ALL DIMENSIONS ARE IN MM UNLESS OTHERWISE SPECIFIED.
7. LOCATION OF WT SHOWN ARE INDICATIVE ONLY. EXACT LOCATION SHALL BE FINALIZED DURING COMMISSIONING BASED ON PLCC REQUIREMENT HOWEVER FOUNDATION FOR WAVE TRAP SHALL BE CONSTRUCTED FOR ALL THREE PHASES.
8. 765/400 KV ICT AREA SHALL BE FINALIZED AFTER RECEIVING PROJECT SPECIFIC ICT AREA LAYOUT FROM POWERGRID. HENCE THE SAME SHALL BE UPDATED ON SWITCHYARD LAYOUT DRAWING ACCORDINGLY & ICT INTERCONNECTIONS SHOWN ON THIS LAYOUT ARE TENTATIVE.
9. 765KV REACTOR AREA SHALL BE FINALIZED AFTER RECEIVING PROJECT SPECIFIC REACTOR AREA LAYOUT FROM POWERGRID. HENCE THE SAME SHALL BE UPDATED ON SWITCHYARD LAYOUT DRAWING ACCORDINGLY & REACTOR INTERCONNECTIONS SHOWN ON THIS LAYOUT ARE TENTATIVE.
10. DETAILS OF BMK, CTJ, CVT JUNCTION BOX & SWITCHYARD PANEL ROOM (SPR) LOCATION SHALL BE SHOWN IN CABLE TRENCH LAYOUT DRAWING.
11. PHASE SEQUENCE IS INDICATIVE & IT SHALL BE VERIFIED AT SITE DURING EXECUTION, ALONG WITH TRANSFORMER LINE.
12. PLINTH HEIGHT OF FOUNDATION WILL BE MAX.300MM FROM FINISHED GROUND LEVEL (F.G.L.). GRAVEL TOP LEVEL WILL BE +175MM FROM F.G.L. FOR SPR REFER CABLE TRENCH DRAWING.
13. FOR TERTIARY LOGGING DRAWING ICT 1 & ICT 2 SHALL BE SUBMITTED AFTER FINALIZATION OF ICT LAYOUT.
14. FOR TERTIARY LOGGING DRAWING ICT 1 & ICT 2 SHALL BE SUBMITTED AFTER FINALIZATION OF ICT LAYOUT.
15. THE LOCATION OF DG AND THE LT YARD IS TENTATIVE AND SHALL BE SUITABLY LOCATED AS PER SITE REQUIREMENT.



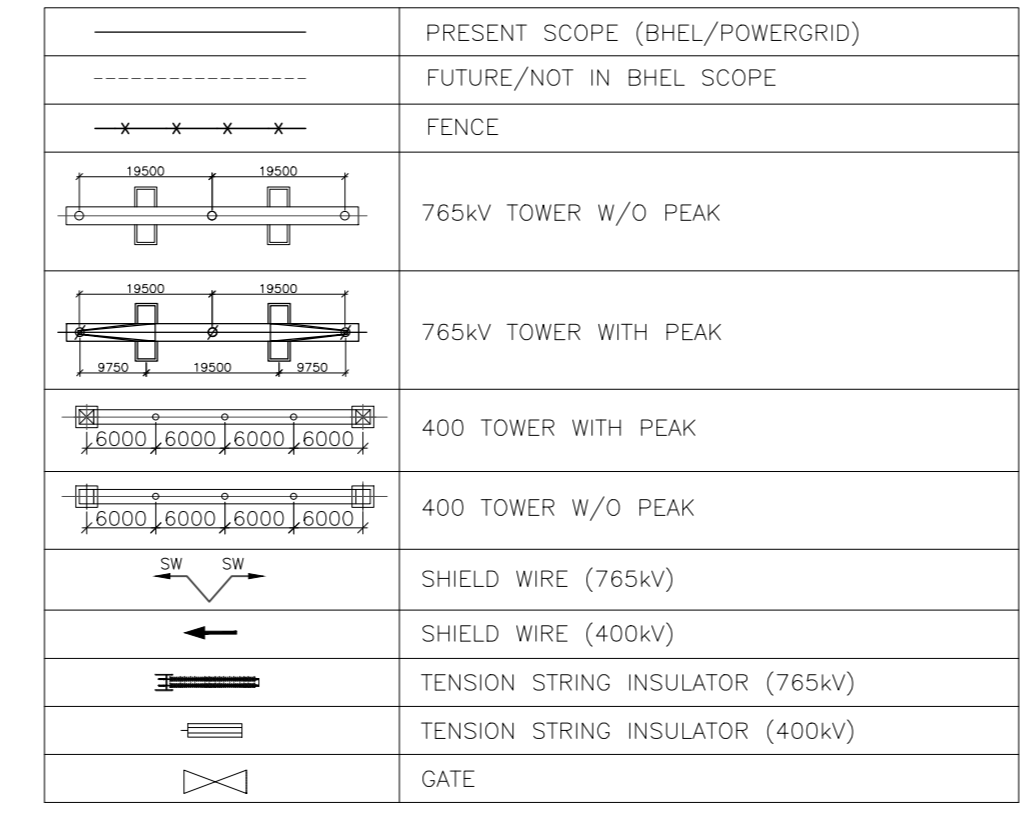
REFERENCE POINT (0,0) N 27 deg 01 min 42.062 sec E 78 deg 24 min 42.370 sec X = 245221.1130 Y = 2997466.2822

N 27 deg 01 min 26.614 sec E 78 deg 24 min 59.583 sec X = 243485.8978 Y = 2991730.8216

CLEARANCE TABLE AS PER POWERGRID SPECIFICATION-

Table with 4 columns: S.No., DESCRIPTION, 765KV SYSTEM, 400KV SYSTEM. Lists clearance requirements for phase-to-phase, phase-to-earth, and other configurations.

LEGEND-



BILL OF QUANTITY - 765KV

Table with 4 columns: ITEM CODE, DESCRIPTION, SYMBOL, QTY. Lists electrical components for the 765KV system.

Revision table with columns: REV., DATE, ALTERED CHECKED APPROVED, and description of changes.

ADDITIONAL INFORMATION W.O.No. STATUS OF DRAWING

POWER GRID CORPORATION OF INDIA LTD NAME OF CUSTOMER

SUBSTATION PACKAGE --S01 765KV/400KV AGRA (UP) NEW SUBSTATION NOA NO.- CC-CS/494-NR1/SS-2546/3/G3/NOA-IAI/5163 & 5164

DISTRIBUTION OF PRINTS

Table showing distribution of prints to various departments: DESK, CHECKED, APPROVED, etc.

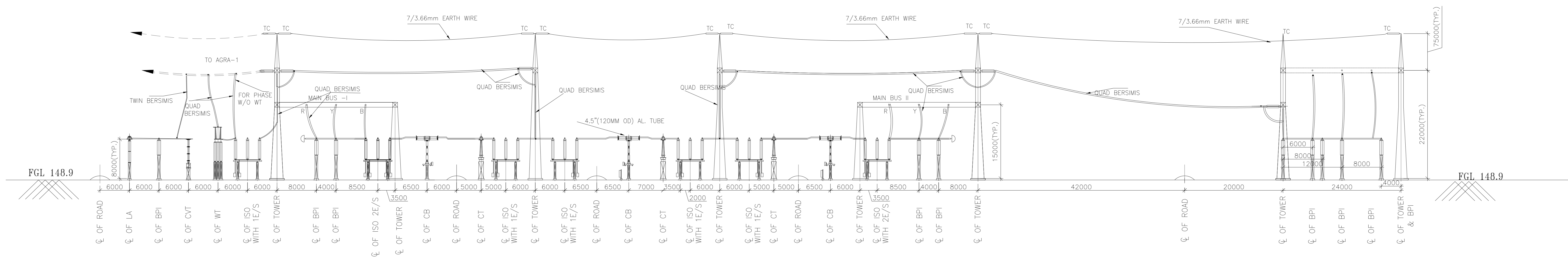
DATE 03.04.15, MS/RJ, VK, RS, APPROVED

SCALE, CARD CODE, NTS

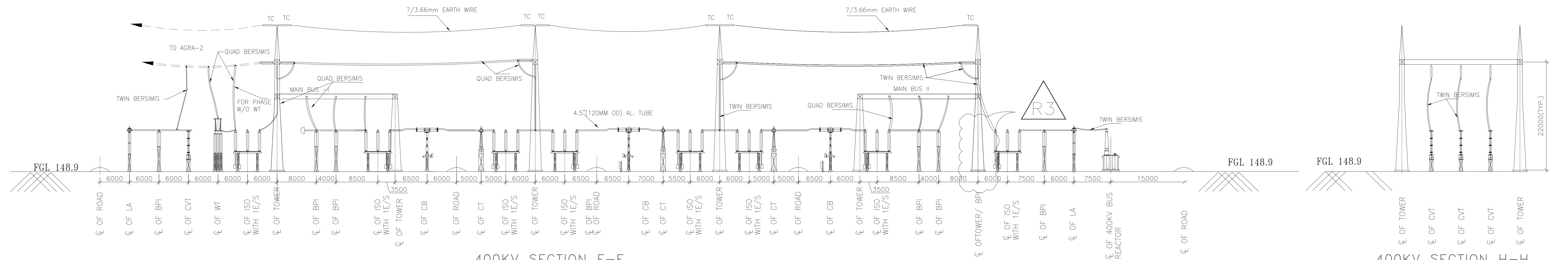
LAYOUT PLAN AND SECTIONAL ELEVATION OF 765/400KV AGRA UPPCL(NEW) SUBSTATION

COPY RIGHT AND CONFIDENTIAL. THE INFORMATION IS THE PROPERTY OF BHEL AND IS NOT TO BE DISCLOSED TO ANY OTHER PARTY WITHOUT THE WRITTEN PERMISSION OF BHEL.

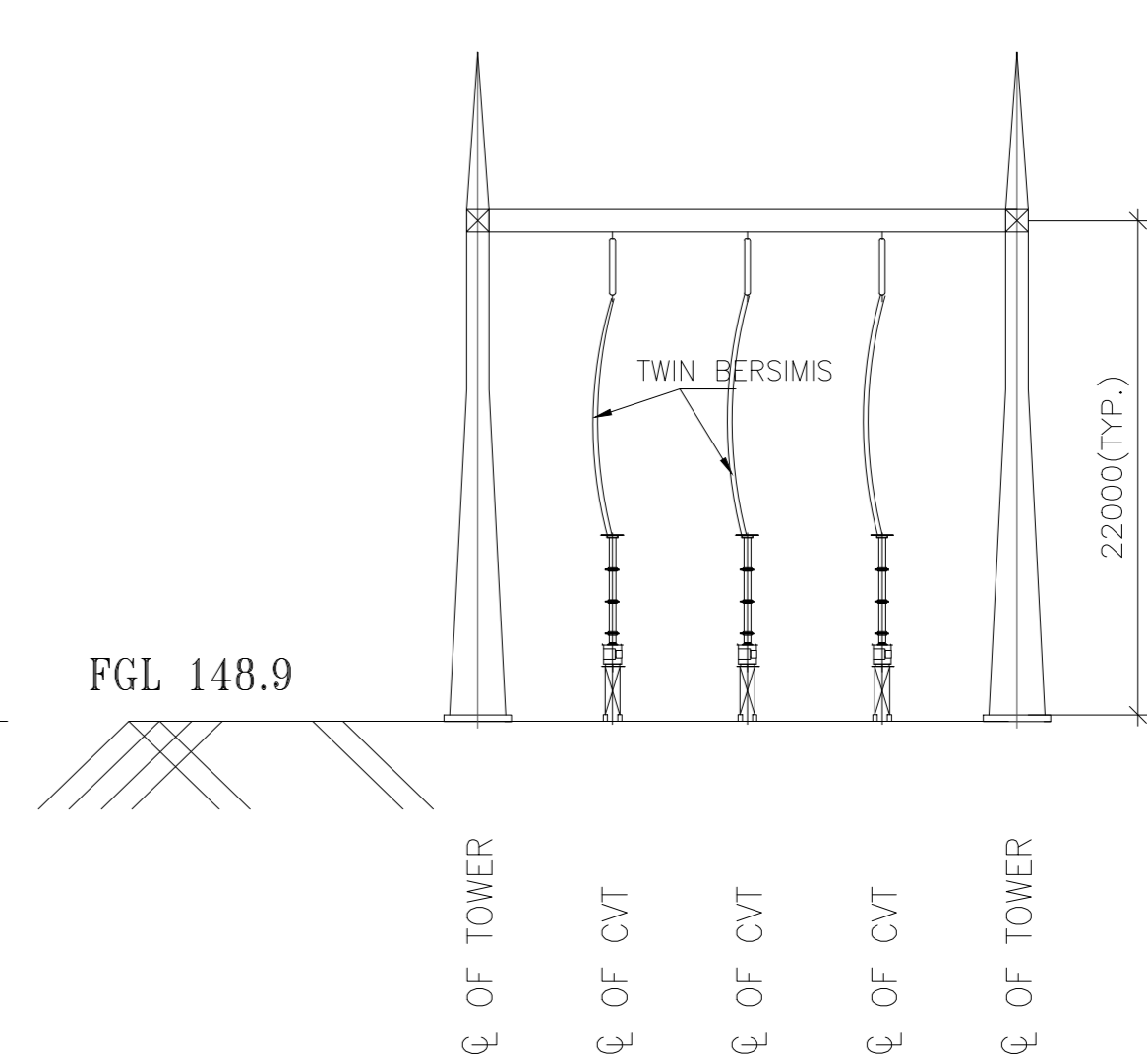
COMPUTER DWG PATH NAME: REF. DRG. No. SIGN. & DATE: INVENTORY No.



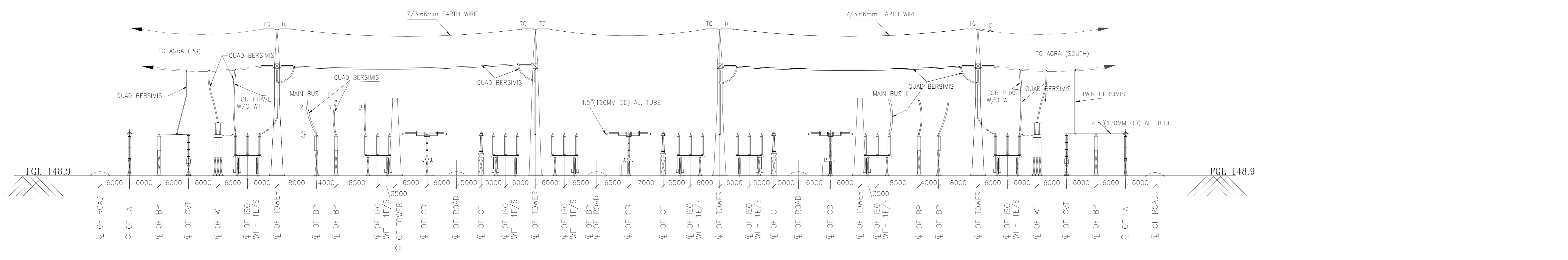
400KV SECTION E-E



400KV SECTION F-F



400KV SECTION H-H
(MAIN BUS)



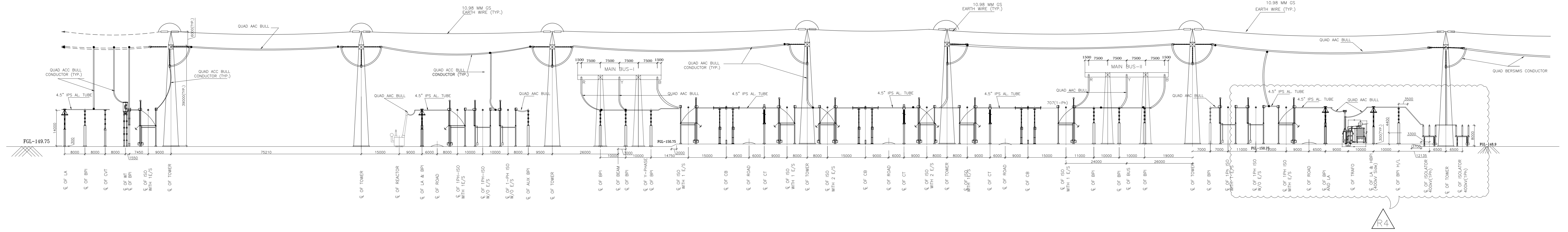
400KV SECTION G-G

THE INFORMATION ON THIS DRAWING IS THE PROPERTY OF BHARAT HEAVY ELECTRICALS LIMITED. IT IS TO BE USED ONLY FOR THE PROJECT AND NOT TO BE REPRODUCED OR TRANSMITTED IN ANY FORM OR BY ANY MEANS, ELECTRONIC OR MECHANICAL, INCLUDING PHOTOCOPYING, RECORDING, OR BY ANY INFORMATION STORAGE AND RETRIEVAL SYSTEM.

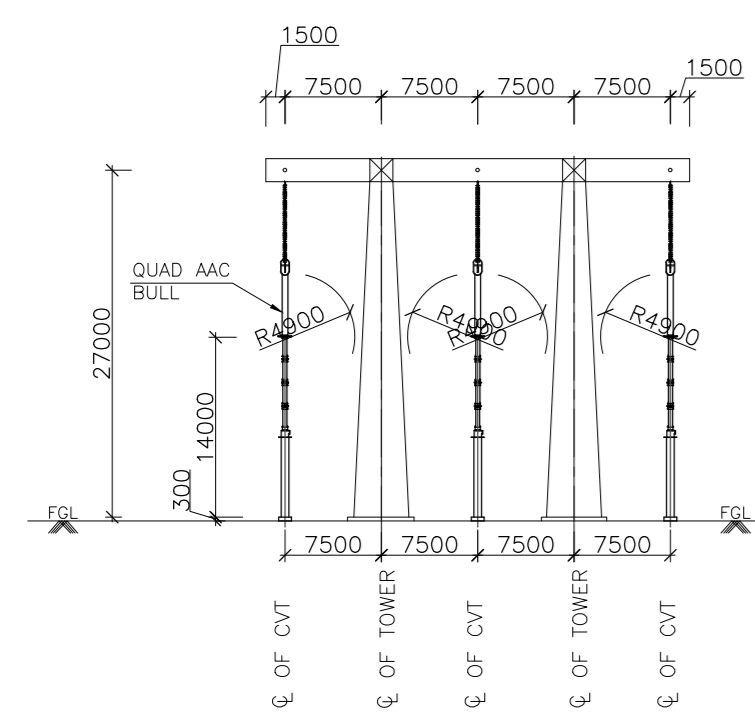
COUNTER/DWG. PART NAME :
 SIGN & DATE REF. DRG. No.
 INVENTORY No.

REV.	DATE	ALTERED CHECKED APPROVED	MS/RJ	REV.	DATE	ALTERED CHECKED APPROVED	MS/RJ	REV.	DATE	ALTERED CHECKED APPROVED	MS/RJ	REV.	DATE	ALTERED CHECKED APPROVED	MS/RJ
04	23.11.15	Yyom/JK	RS	03	14.10.15	Yyom/JK	RS	02	03.04.15	MS/RJ	VK	01	03.04.15	MS/RJ	VK
ZONE		REVISED TO INCORPORATE TRAF0 AND REACTOR AREA AND COMMENTS OF POWERGRID REVISION 03		ZONE		REVISED TO INCORPORATE TRAF0 AND REACTOR AREA AND COMMENTS OF POWERGRID REVISION 02		ZONE		REVISED TO INCORPORATE TRAF0 AND REACTOR AREA LAYOUT		ZONE		REVISED TO INCORPORATE TRAF0 AND REACTOR AREA LAYOUT	

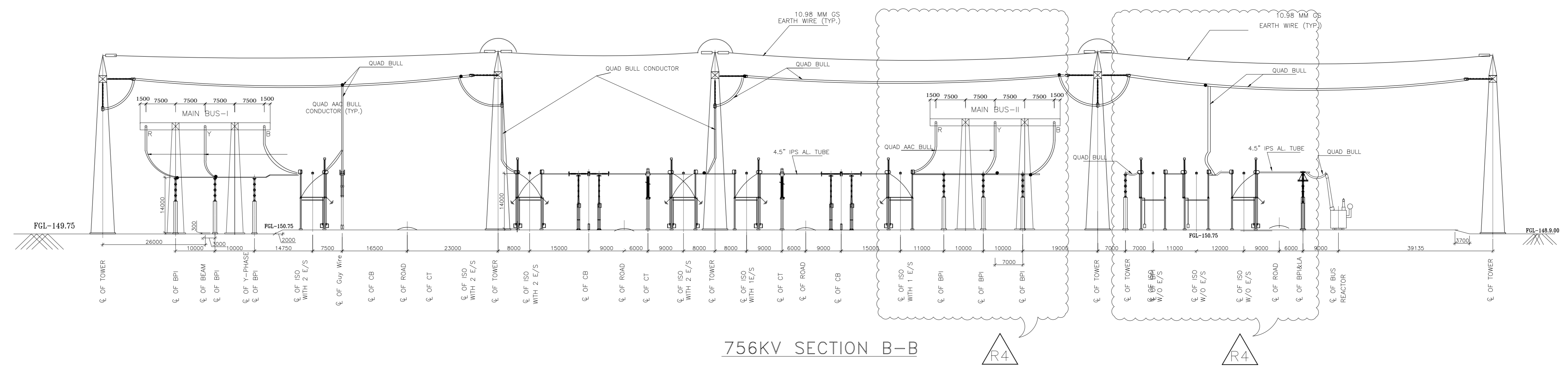
ADDITIONAL INFORMATION W.O.No.	भारत भारी इलेक्ट्रिकल्स लिमिटेड NAME OF CUSTOMER	POWER GRID CORPORATION OF INDIA LTD			
STATUS OF DRAWING	NAME OF PROJECT :	SUBSTATION PACKAGE -SS01 765KV/400KV AGRA (UP) NEW SUBSTATION			
DISTRIBUTION OF PRINTS	NOA NO.-	CC-CS/494-NR1/SS-2546/3/G3/NOA-IAI/5163 & 5164			
	भारत भारी इलेक्ट्रिकल्स लिमिटेड BHEL	कक्षा/DWG	नाम/NAME	हस्ताक्षर/SIGN.	दि./DATE
		रजि./CHKD	RJ	sd/	
		स्वीकृत/APPV	VK	sd/	
		स्वीकृत/APPV	RS	sd/	
	भारत भारी इलेक्ट्रिकल्स लिमिटेड BHEL	अनुपात / SCALE	कार्ड कोड CARD CODE		
		NTS			
	शीट/सं./DRAWING NO.	TB-0-376-316-002		पृष्ठ/REV.	04
	765kv/400kv AGRA UPPTCL(NEW) SUBSTATION	पृष्ठ क्र./SHEET No.	02	अगला पृष्ठ/NEXT SHEET	03



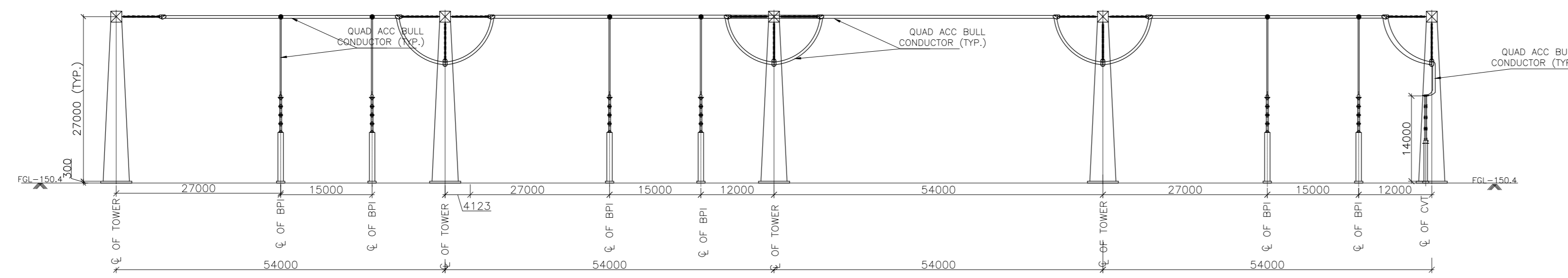
765 KV SECTION A-A



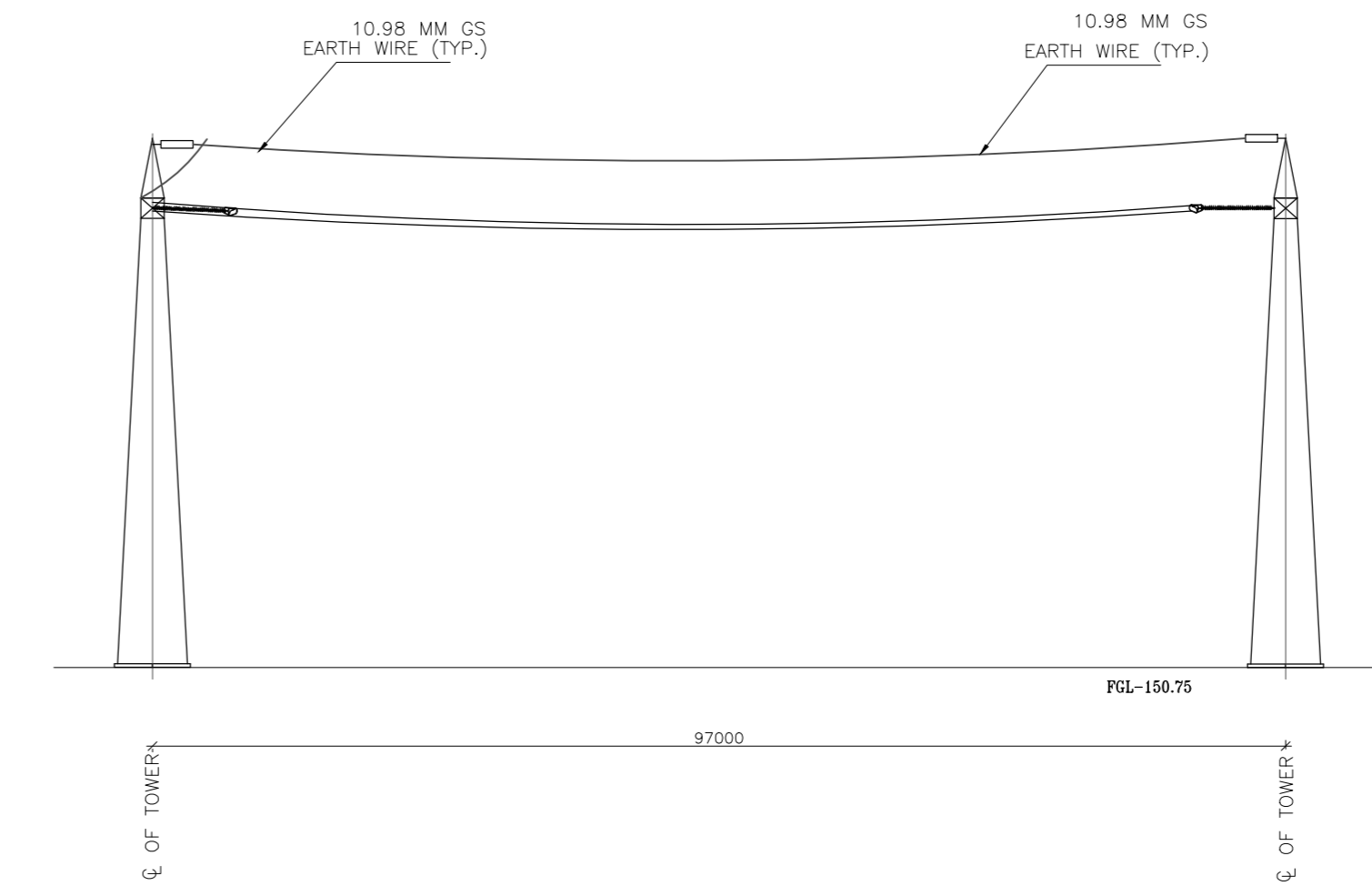
SECTION D-D (765 kV)
(BUS CVT MAIN BUS I & II)



756KV SECTION B-B



SECTION C-C (765 kV)
765 kV BUS SECTION (MAIN BUS I & II)



765 KV SECTION J-J (SPARE BAY)

COMPUTER AIDED DRAWING
 THE INFORMATION CONTAINED HEREIN IS THE PROPERTY OF BHARAT HEAVY ELECTRICALS LIMITED.
 IT IS TO BE USED ONLY FOR THE PROJECT AND NOT TO BE REPRODUCED OR TRANSMITTED IN ANY FORM OR BY ANY MEANS, ELECTRONIC OR MECHANICAL, INCLUDING PHOTOCOPYING, RECORDING, OR BY ANY INFORMATION STORAGE AND RETRIEVAL SYSTEM, WITHOUT THE WRITTEN PERMISSION OF BHARAT HEAVY ELECTRICALS LIMITED.

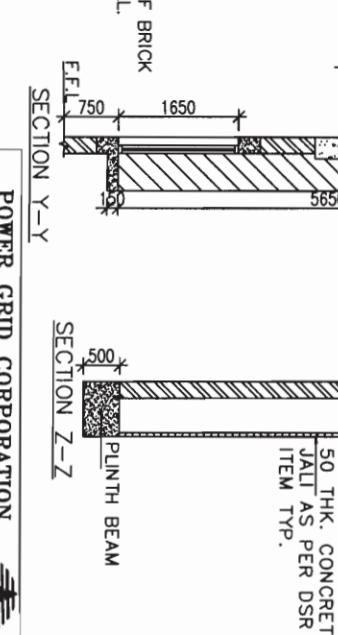
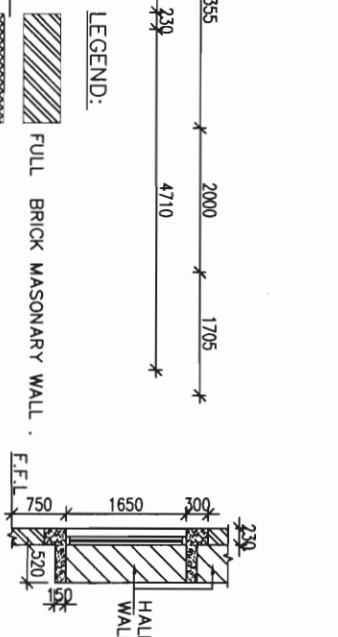
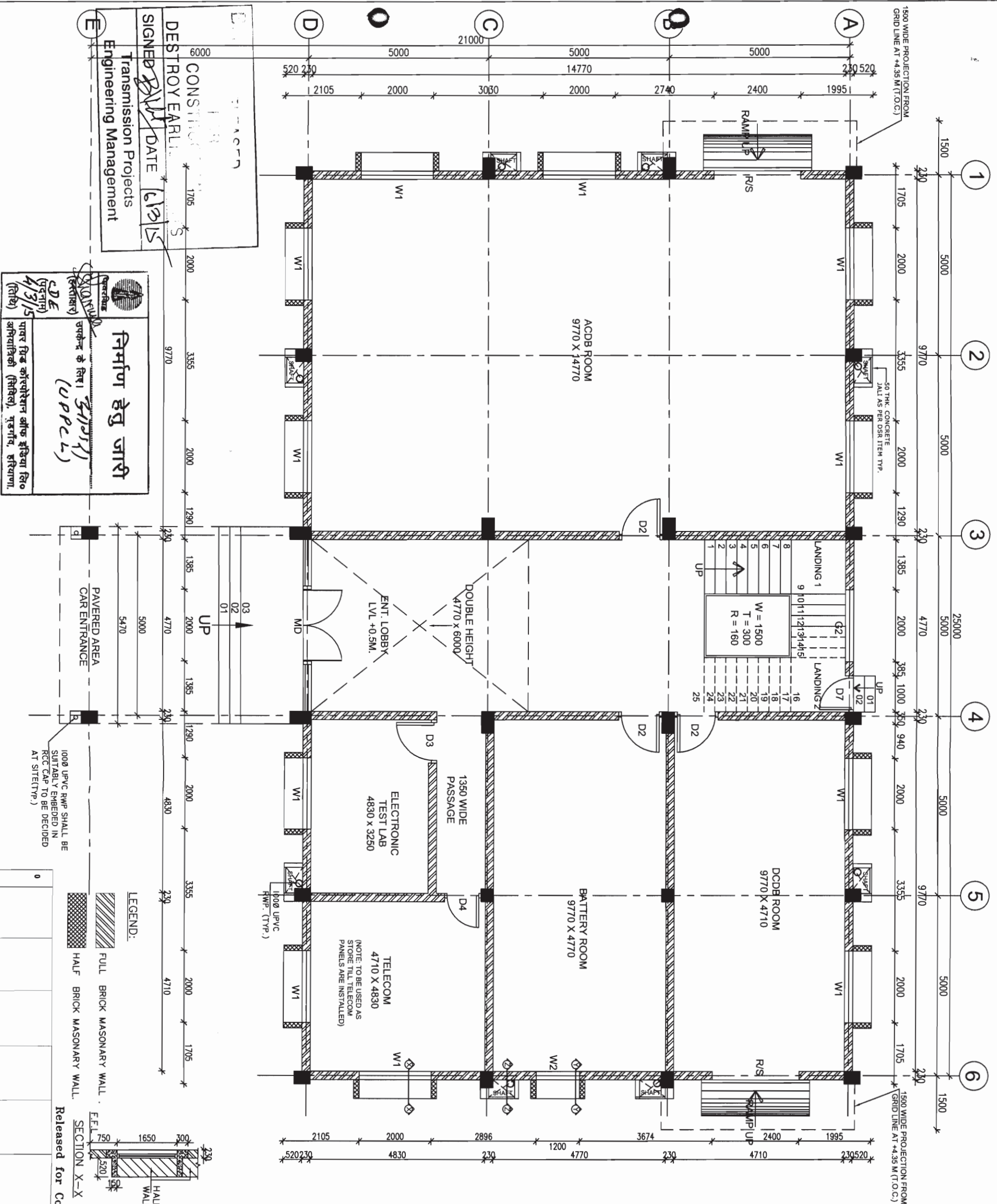
REV.	DATE	ALTERED CHECKED APPROVED	MS/RJ	REV.	DATE	ALTERED CHECKED APPROVED	MS/RJ	REV.	DATE	ALTERED CHECKED APPROVED	MS/RJ	REV.	DATE	ALTERED CHECKED APPROVED	MS/RJ
04	23.11.15		Vyom/JK	03	14.10.15		Vyom/JK	02	03.04.15		VK	01	03.04.15		VK
ZONE		REVISED TO INCORPORATE TRAF0 AND REACTOR AREA AND COMMENTS OF POWERGRID REVISION 02		ZONE		REVISED TO INCORPORATE TRAF0 AND REACTOR AREA AND COMMENTS OF POWERGRID REVISION 02		ZONE		REVISED TO INCORPORATE TRAF0 AND REACTOR AREA LAYOUT		ZONE		REVISED TO INCORPORATE TRAF0 AND REACTOR AREA LAYOUT	

ADDITIONAL INFORMATION W.O.No.	POWER GRID CORPORATION OF INDIA LTD
STATUS OF DRAWING	NAME OF PROJECT : SUBSTATION PACKAGE -SS01 765KV/400KV AGRA (UP) NEW SUBSTATION
DISTRIBUTION OF PRINTS	NOA NO.- CC-CS/494-NR1/SS-2546/3/G3/NOA-IAII/5163 & 5164
DATE	22.01.15
SCALE	NTS
CARD CODE	
SECTION TITLE	SECTION VIEW FOR 765KV YARD AGRA UPPTCL(NEW) SUBSTATION
DRAWING NO.	TB-0-376-316-002
SHEET No.	03
NEXT SHEET	

DOOR & WINDOW SCHEDULE

NAME	WIDTH	LINTEL	SILL	DESCRIPTION
MD	2000	2400	-/-	Aluminum glazed door with dorma bis 80 - universal floor spring, double door with mechanical back check, hydraulic hold open or delayed action.
R/S	2400	3000	-/-	MS Rolling shutter
D1	1500	2400	-/-	Aluminum glazed door
D2	1200	2400	-/-	Fireproof steel door
D3	1200	2400	-/-	Aluminum glazed door
D4	1000	2400	-/-	Aluminum glazed door
D5	900	2400	-/-	Aluminum frame with particle board shutter & fixed glazed
D6	750	2100	-/-	Aluminum frame with particle board shutter
D7	1000	2000	-/-	Aluminum glazed door
W1	2000	2400	750	Aluminum glazing
W2	1200	2400	750	Aluminum glazing
V1	470	2400	1450	Aluminum glazing
G1	4710	3500	750	Aluminum glazing
G2	2000	AS/DETAILS		Aluminum glazing
G3	2000	LG 4 to 3790	LG 4 to 750	Aluminum glazing

- NOTES:-**
- ALL DIMENSIONS ARE IN MM ONLY.
 - DO NOT SCALE THE DRAWING, FOLLOW WRITTEN DIMENSIONS ONLY.
 - ALL DIMENSIONS SHALL BE CHECKED PRIOR TO EXECUTION OF THE WORK.
 - FOR LOCATION OF BUILDING REFER GA PLAN.
 - FOR R.C.C COLUMN SIZES REFER STRUCTURAL DRAWINGS.
 - BRICKS (CLASS 75) SHALL BE USED IN BRICK MASONRY.
 - ALL INTERNAL WALL SHALL BE 115MM THK. & EXTERNAL WALL SHALL BE 230MM THK.
 - THE DRAWING TO BE READ IN CONJUNCTION WITH RELEVANT STRUCTURAL DRAWINGS BOTH FOR DIMENSIONS AND LAYOUT.
 - FOR CB TOILETS AND KITCHEN DETAILS REFER SEPARATE DRAWINGS.
 - FOR DOORS, WINDOWS AND VENTILATORS DETAILS REFER SEPARATE DRAWINGS.
 - LAYOUT SHALL BE MARKED ON SITE AND GOT APPRD. BY ENGINEER IN-CHARGE IN WRITING BEFORE COMMENCING EXCAVATION WORK AT SITE.
 - ANY DISCREPANCY IN DRAWING TO BE BROUGHT TO THE NOTICE OF SITE INCHARGE.
 - COLUMN SHOWN IN THE DRAWING ARE INDICATIVE, FOR EXACT COLUMN LOCATIONS REFER STRUCTURAL DRAWING.
 - LOOSE FURNITURES ARE NOT IN THE SCOPE OF CONTRACTOR. SITE SHALL PROCURE THE LOSE FURNITURES SEPARATELY.
 - ONE NO. RCC JALI SHALL BE KEPT OPENABLE AT EACH FLOOR FOR MAINTENANCE PURPOSE.
 - CONTROL ROOM BUILDING MAY BE MIRROR IMAGED AS PER THE REQUIREMENTS OF GA PLAN IN CONSULTATION WITH CORPORATE ENGINEERING AND SITE.
 -
 -



CONSTRUCTION
DESTROY EARLY
SIGNED BY DATE 16/3/15
Transmission Projects
Engineering Management

निर्माण हेतु जारी
परकम के लिए 5/1/15
(उपप्ल.)
पावर ग्रिड कॉर्पोरेशन ऑफ इंडिया लि.
अभियंत्रिकी (सिविल), गुरुगंज, हरियाणा.

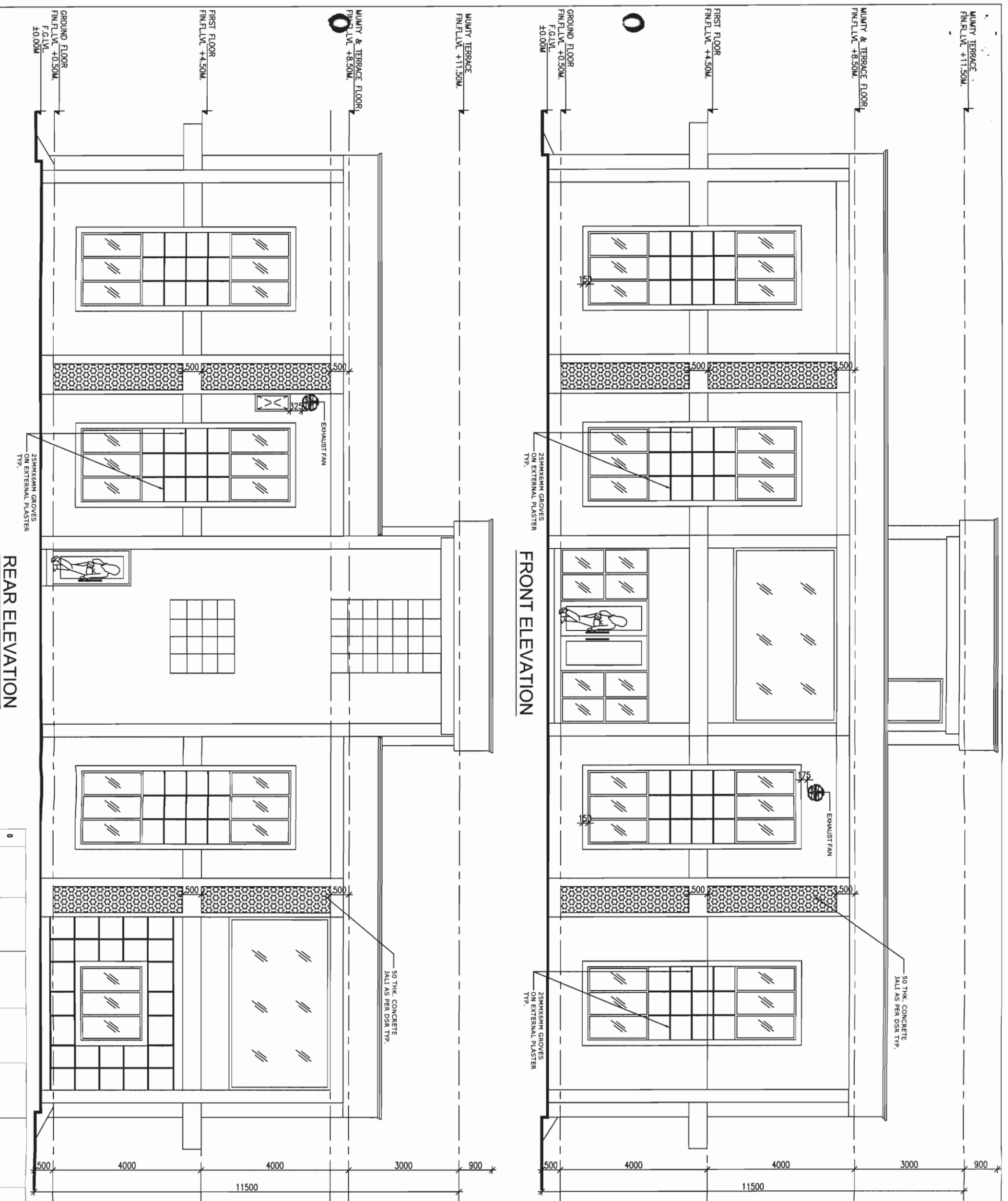
PAVERED AREA
CAR ENTRANCE
1000 UPVC RMP SHALL BE
SUITABLY EMBEDDED IN
RCC CAP TO BE DECIDED
AT SITE(TYP.)

LEGEND:
FULL BRICK MASONRY WALL.
HALF BRICK MASONRY WALL.

Released for Construction

POWER GRID CORPORATION
OF INDIA LIMITED
(A Government of India Enterprise)
PROJECT : 765/400KV SUB STATION
AT AGRA (UPPCL)
CONTROL ROOM BUILDING
GROUND FLOOR PLAN

DATE: _____
DRAWING NO. C-ENG-GR-1-AGRA-CRB-ARCH-01
SCALE: 1/20
BY: _____



REAR ELEVATION

FRONT ELEVATION

निर्माण हेतु जारी
 (UPPECL)
 4/3/15
 पावर ग्रिड कॉर्पोरेशन ऑफ इंडिया लिमिटेड (विशेषतः), तृतीया, हरियाणा (मिहोला)

BHEL RELEASED FOR CONSTRUCTION DESTROY EARLIER PRINTS
 SIGNED [Signature] DATE 16/3/15
 Transmission Projects Engineering Management

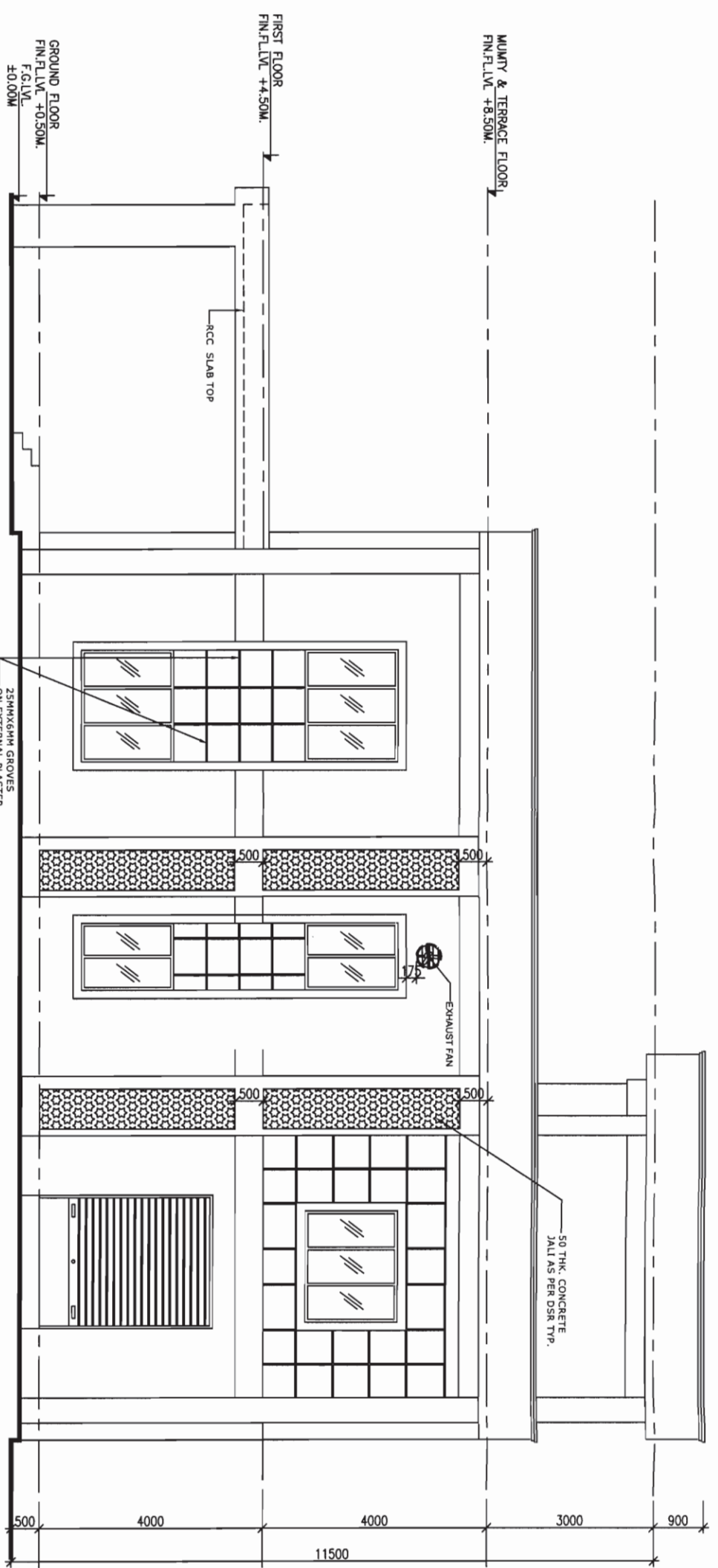
Released for Construction

POWER GRID CORPORATION OF INDIA LIMITED
 (A Government of India Enterprise)

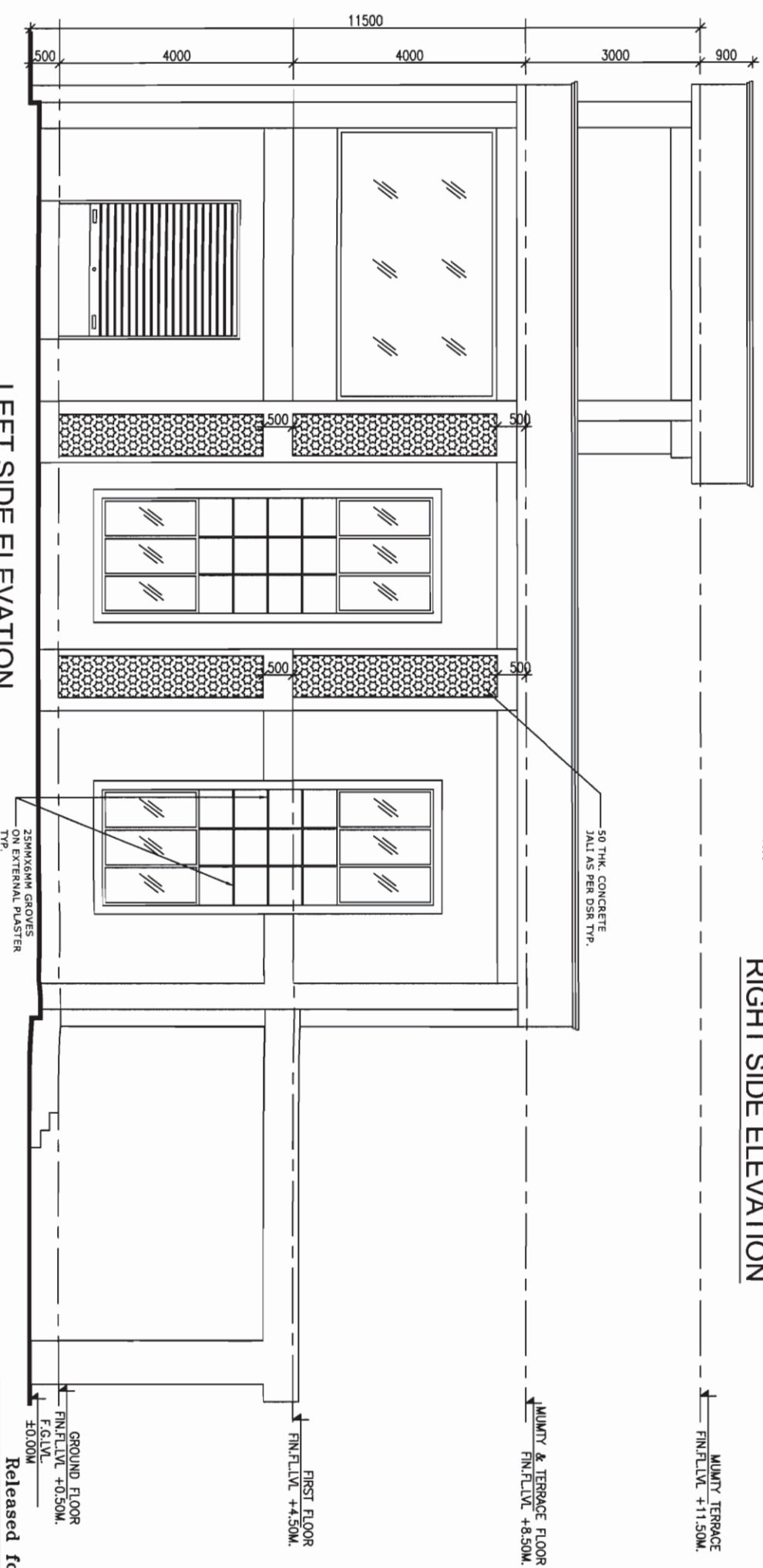
765/400kV SUB STATION AT AGRA (UPPCL)



REV	PROF BY	REV'D BY	REV'D BY	REV'D BY	REV'D BY	APP'D BY	DATE
0							
REV	DRAWING NO. C-ENGG-NR-1-AGRA-CRB-ARCT-02	SCALE	M/S	0			
REV	CONTROL ROOM BUILDING FRONT & REAR SIDE ELEVATIONS						



RIGHT SIDE ELEVATION



LEFT SIDE ELEVATION

निर्माण हेतु जारी
 उपर्युक्त के लिए।
 (कर्मचारी)
 CDE
 4/3/11
 5 वावर् निम्न शीर्षक/प्रकार के अंक प्रकृतियों के लिए जारी किए जा रहे हैं।
 (निवेदन)
 (कर्मचारी)
 (कर्मचारी)
 (कर्मचारी)

BHEL RELEASED FOR CONSTRUCTION DESTROY EARLIER PRINTS
 SIGNED: [Signature] DATE: 16/3/15
 Transmission Projects Engineering Management

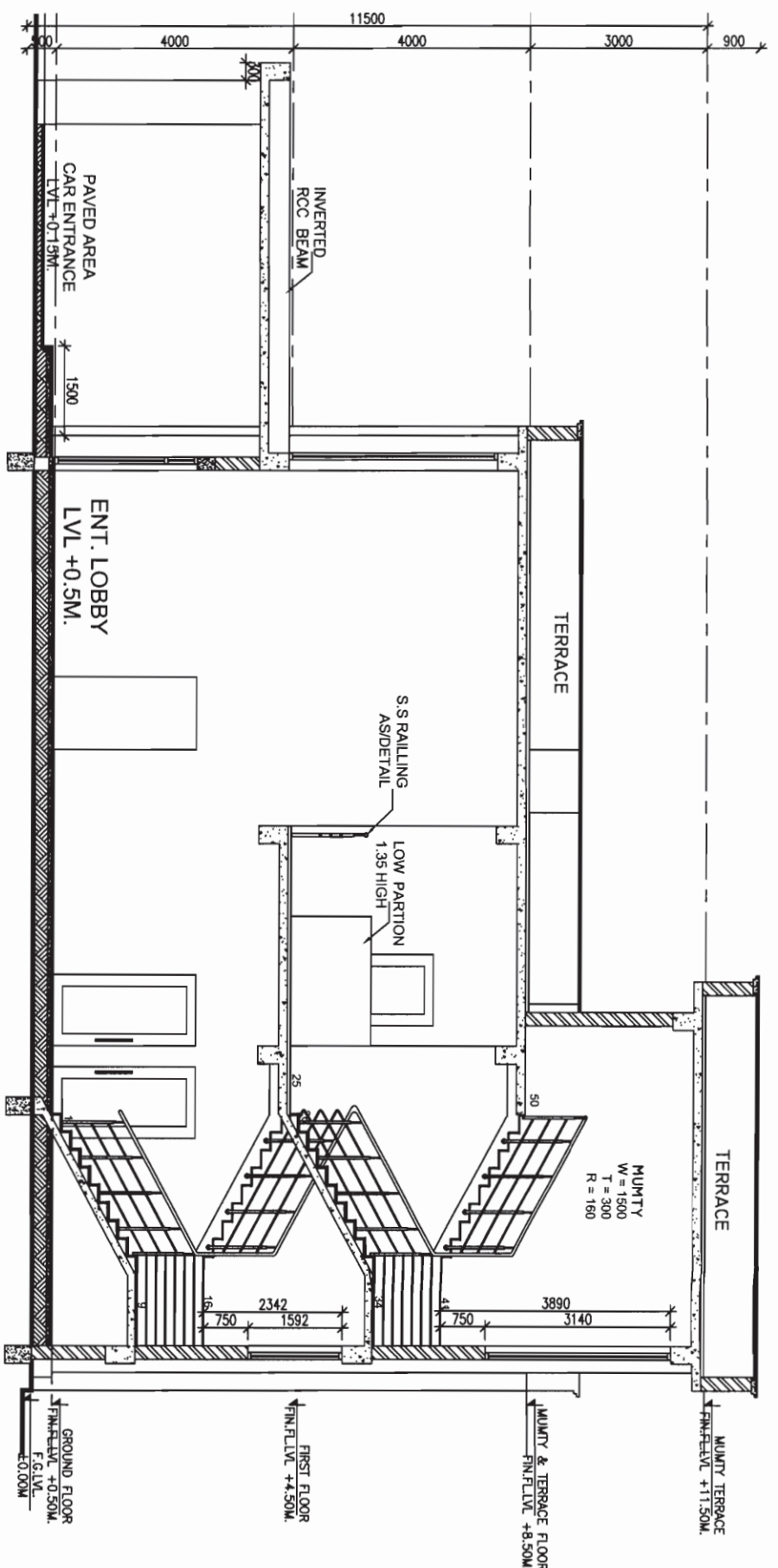
POWER GRID CORPORATION OF INDIA LIMITED
 (A Government of India Enterprise)
 765/400KV SUB STATION AT AGRA (UP/PC).

0	PROJ. BY	REV'D. BY	REV'D. BY	REV'D. BY	REV'D. BY	APP'D. BY	DATE
	INDIAN NGC CIVIL ENGINEERING (CIVIL)	INDIAN NGC CIVIL ENGINEERING (CIVIL)	INDIAN NGC S/S (INDIAN NGC S/S)	INDIAN NGC S/S (INDIAN NGC S/S)	INDIAN NGC CIVIL ENGINEERING-T/SS/CIVIL		

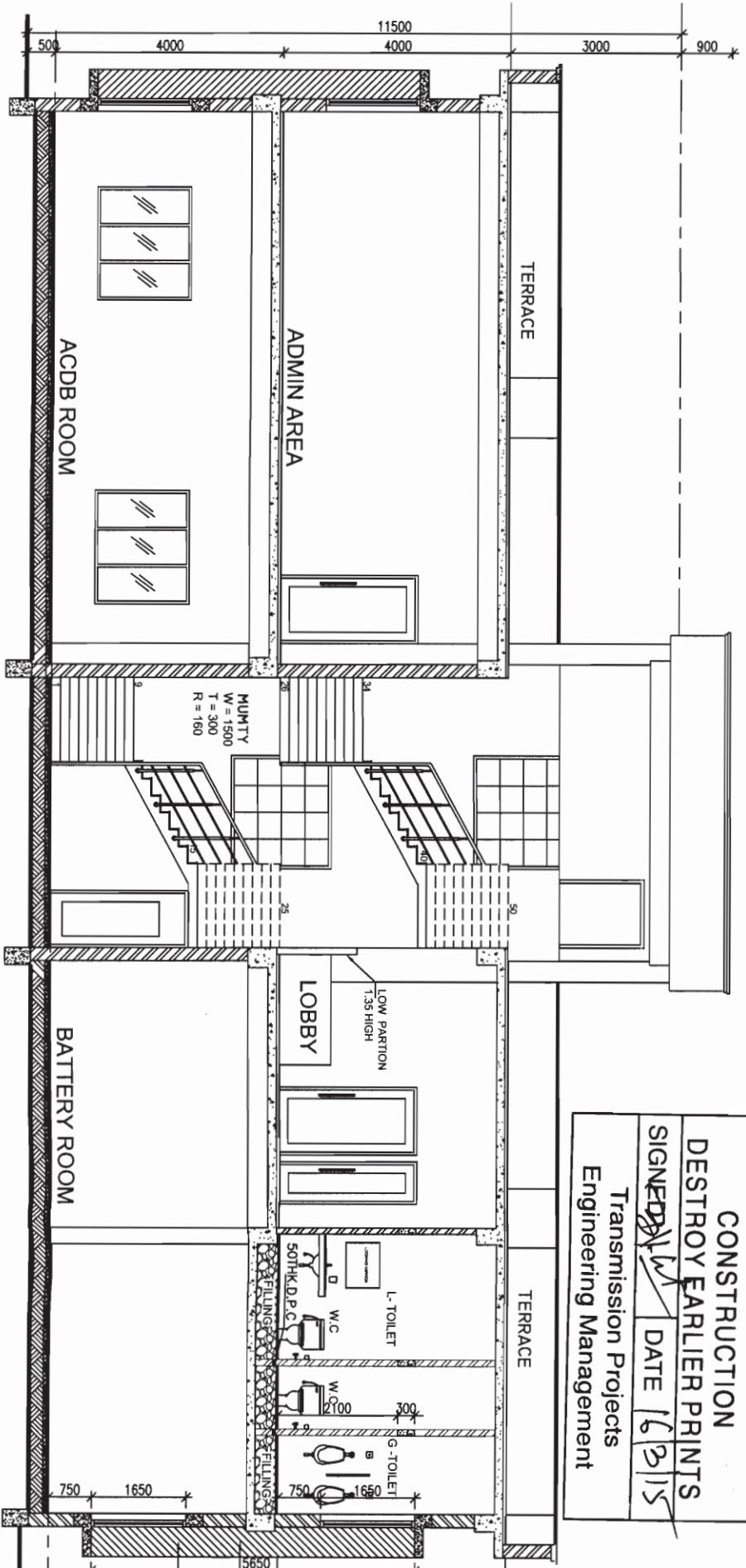
Released for Construction

CONTROL ROOM BUILDING
 RIGHT SIDE & LEFT SIDE ELEVATIONS
 DRAWING NO. C-ENGG-NR-1-AGRA-CR3-ARCE-02
 (SER. 2 OF 2)
 SCALE: MTS
 REV: 0





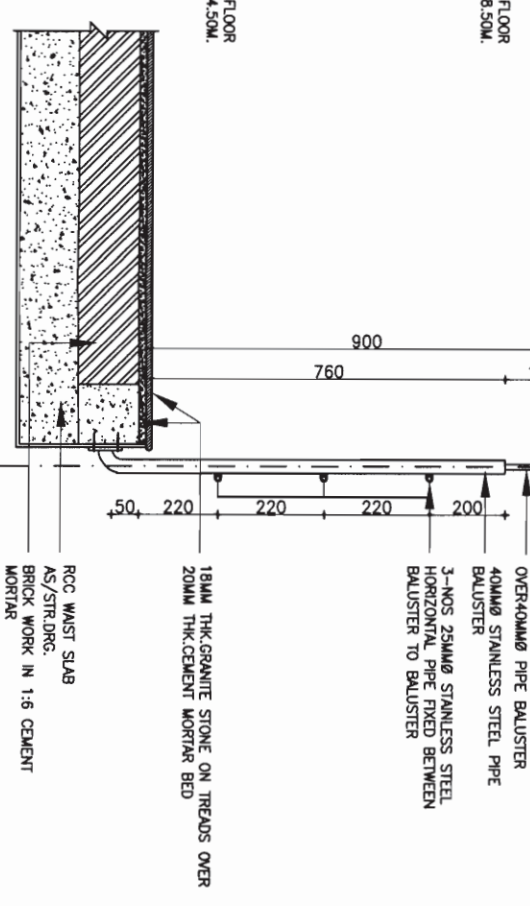
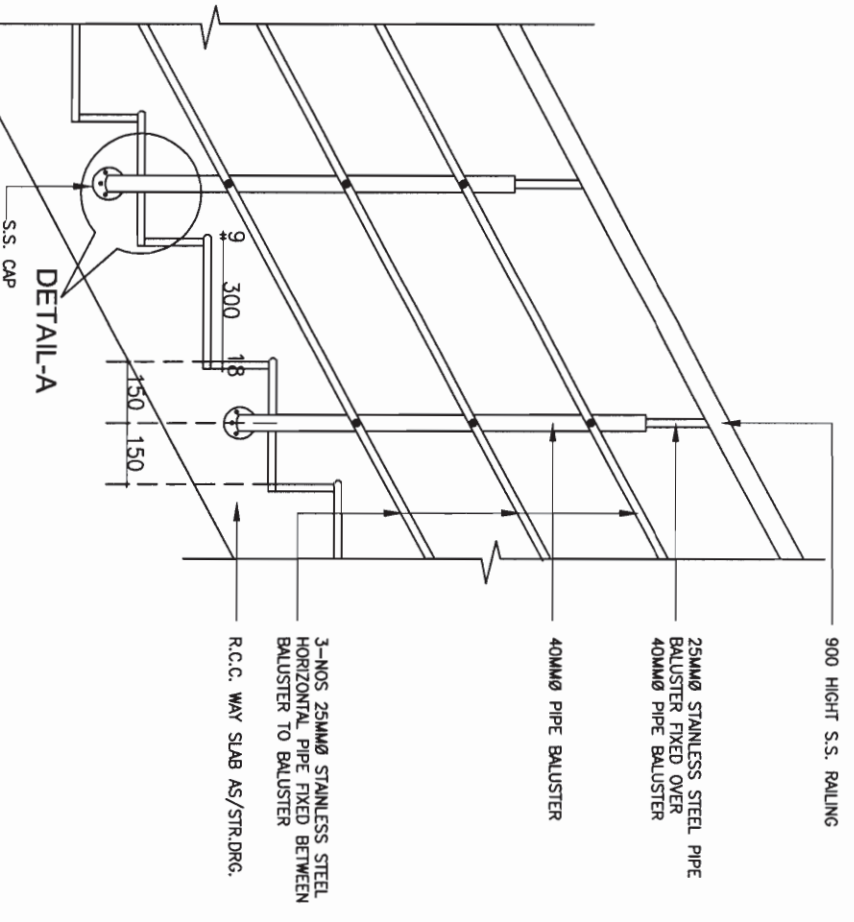
SECTION THROUGH CANOPY, LOBBY & STAIRCASE



SECTION THROUGH DCDB ROOM, TOILET, BATTERY ROOM, LOBBY, ACDB ROOM & ADMIN AREA

BHEL RELEASED FOR CONSTRUCTION DESTROY EARLIER PRINTS
 SIGNED BY *[Signature]* DATE 16/3/15
 Transmission Projects Engineering Management

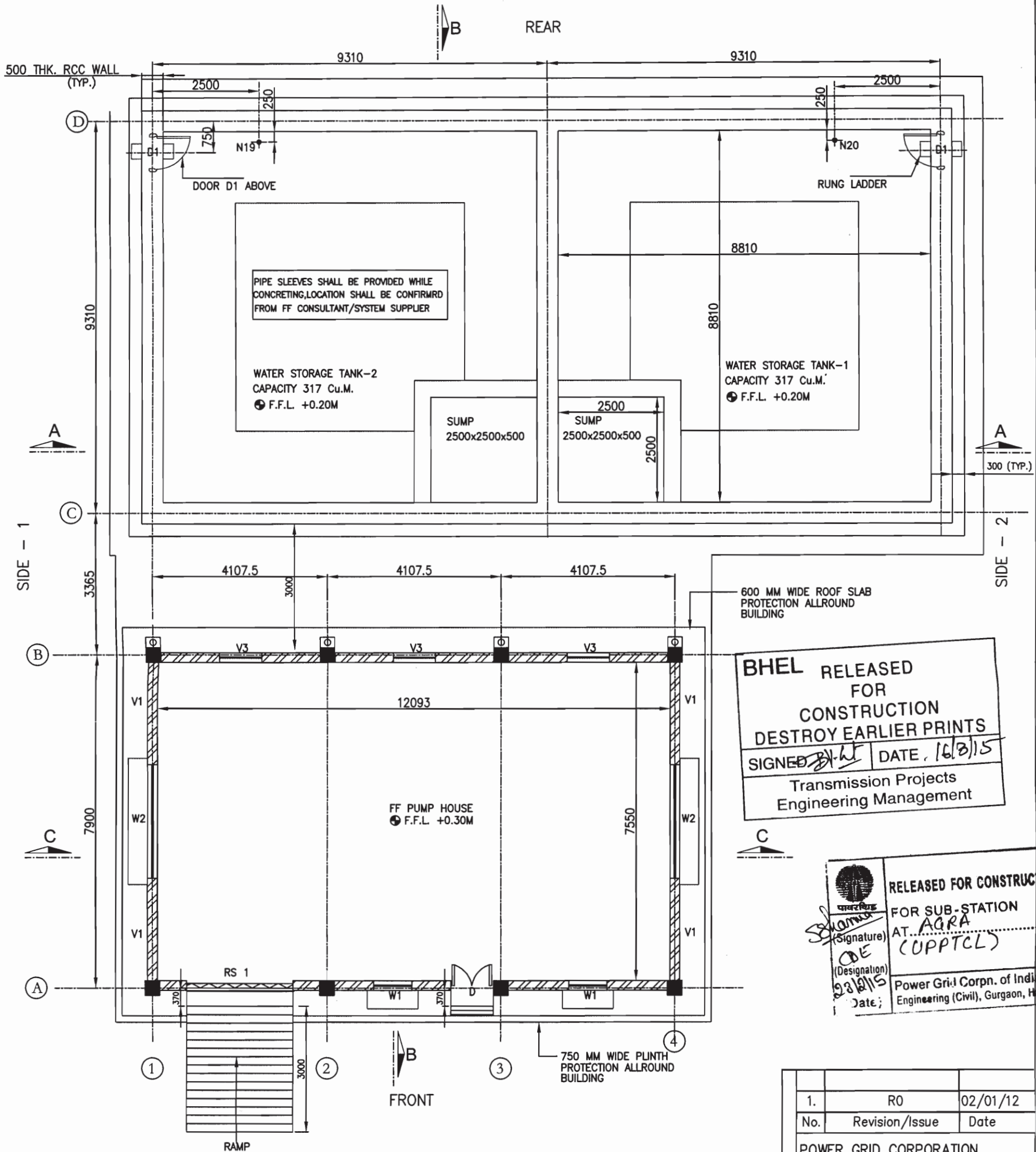
निर्माण हेतु जारी
 उपकेन्द्र के लिए।
 (UPPCL)
 43/15
 (व.नं. 43/15)
 (क.नं. 43/15)
 (क.नं. 43/15)
 (क.नं. 43/15)



Released for Construction

POWER GRID CORPORATION OF INDIA LIMITED
 (A Government of India Enterprise)

PROJECT : 765/400KV SUB STATION AT AGRA (UPPCL)
 TITLE : CONTROL ROOM BUILDING SECTIONS
 DRAWING NO. C-ENG-01-1-AGRA-CRB-ARCH-03
 SCALE : 1/20



GROUND FLOOR PLAN FOR FFPH & WATER TANK

APPROVED BY E.D.ENGG-S/Strn & T/L VIDE NOTE SHEET
 Ref:- C/ENGG/CIVL/STD/FDN/M25 Dated 09/02/2012

RELEASED FOR TENDER/CONSTRUCTION

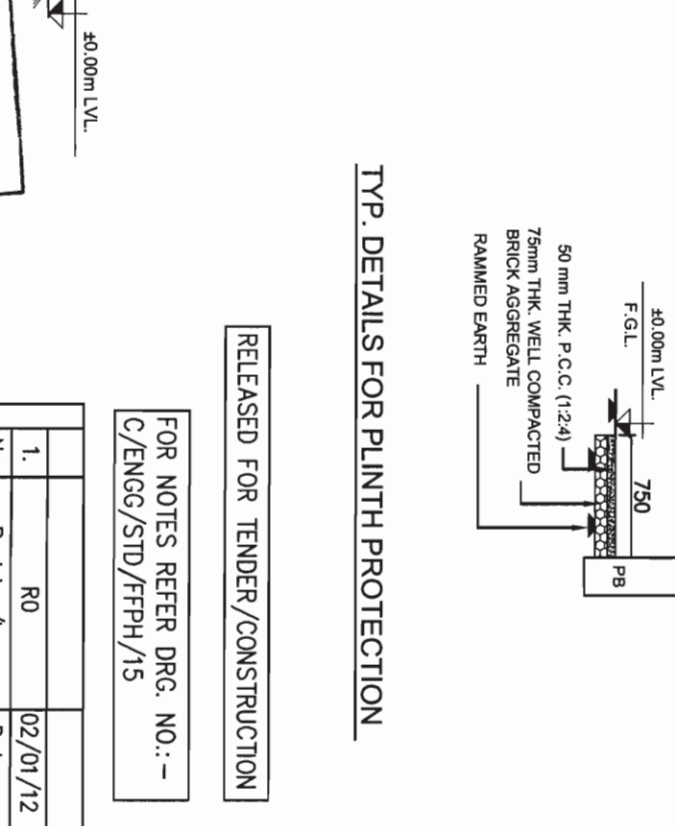
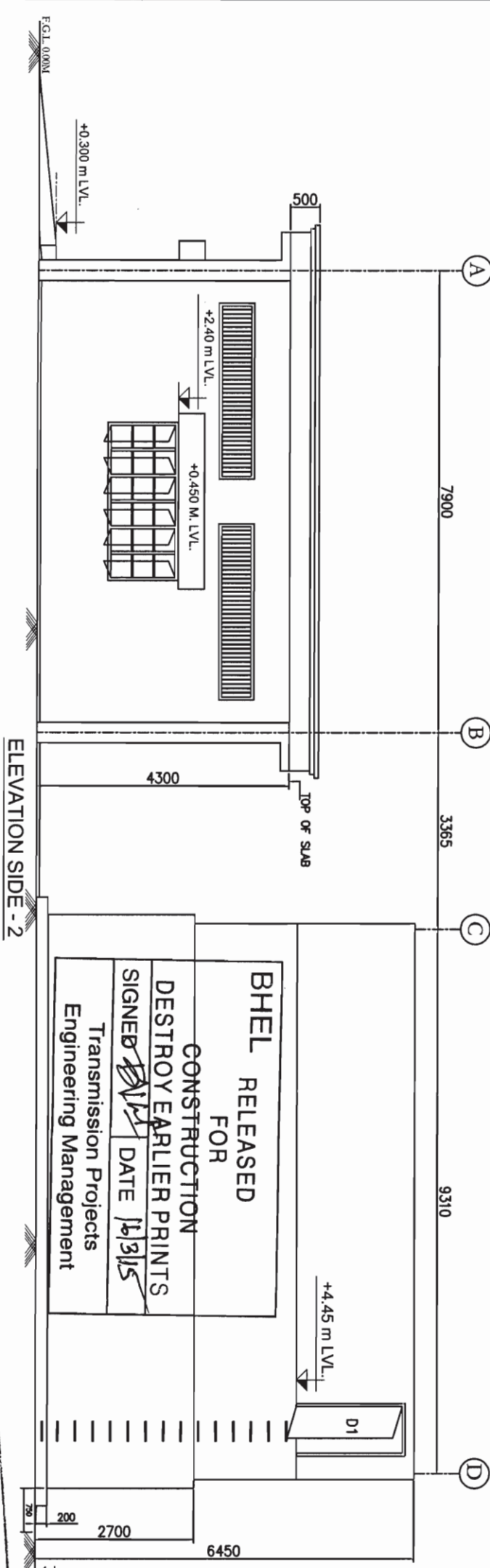
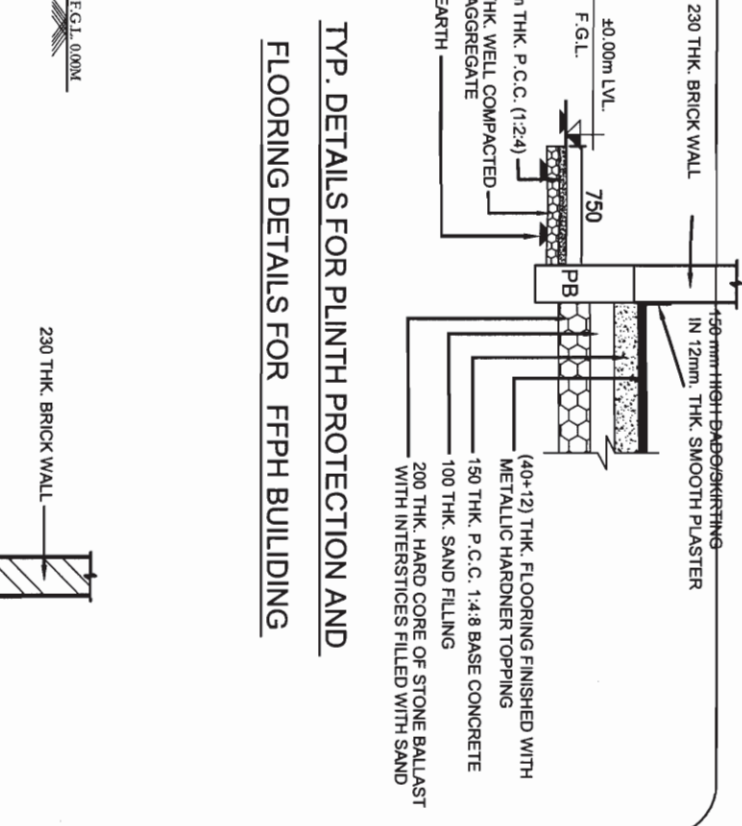
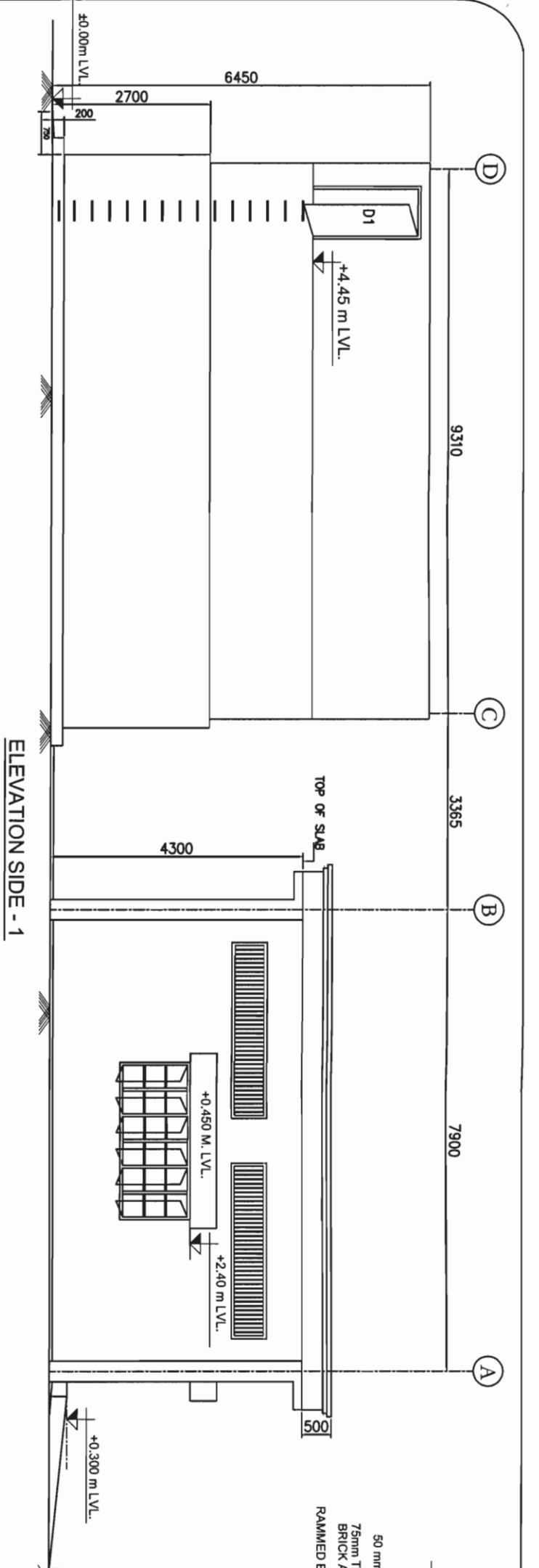
FOR NOTES REFER DRG. NO.: -
 C/ENGG/STD/FFPH/15

PREP.	REVD.	REVD.	REVD.	REVD.	REVD.	REVD.	APPD.	DATE
-------	-------	-------	-------	-------	-------	-------	-------	------

BHEL RELEASED FOR CONSTRUCTION DESTROY EARLIER PRINTS
 SIGNED *[Signature]* DATE 16/8/15
 Transmission Projects Engineering Management

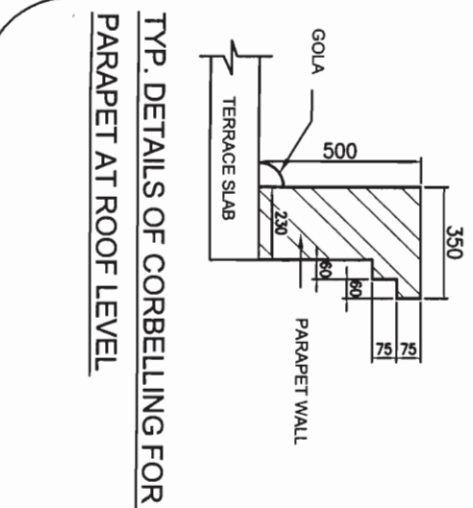
RELEASED FOR CONSTRUCTION FOR SUB-STATION AT AGRA (UPPTCL)
[Signature]
 (Designation) CDE
 28/8/15
 Date;
 Power Grid Corpn. of India Ltd. Engineering (Civil), Gurgaon, Haryana

1.	RO	02/01/12
No.	Revision/Issue	Date
POWER GRID CORPORATION OF INDIA LIMITED (A Government of India Enterprise)		
PROJECT: STANDARD FIRE FIGHTING PUMP HOUSE & WATER TANK.		
TITLE: GROUND FLOOR PLAN FOR FIRE FIGHTING PUMP HOUSE & WATER TANK		
DRAWING NO: C/ENGG/STD/FFPH-1		
SCALE	SCALE N.T.S.	Sheet 1



SCHEDULE OF OPENING:-

SR. NO.	OPENING MARK	SIZE WXD mm	CLL LVL mts.	UNTEL LVL mts.	NOS.	DESCRIPTION
01	ROLLING SHUTTER RS1	2500X3400	+0.300	+3.70	01	STANDERD STEEL ROLLING SHUTTER
02	DOOR D	1000X2100	+0.300	+2.40	01	M.S. DOOR FRAME WITH M.S. SHEET DOUBLE SHUTTER
03	DOOR D1	900X1850	+4.45	+6.3	02	STEEL DOOR - SINGLE SHUTTER MADE FROM HOT ROLLED SECTION
04	WINDOW W1	900X1200	+1.20	+2.40	02	STEEL WINDOW (1200mm) GLAZED OPENING MADE FROM HOT ROLLED SECTIONS.
05	WINDOW W2	2700X1200	+1.20	+2.40	02	STEEL WINDOW (1200mm) GLAZED OPENING MADE FROM HOT ROLLED SECTIONS.
06	VENTILATOR V1	3010X600	AT BEAM	BOTTOM	04	STEEL GRIL
07	VENTILATOR V3	1000X600	AT BEAM	BOTTOM	03	STEEL GRIL



TYP. DETAILS OF CORBELLING FOR PARAPET AT ROOF LEVEL

RELEASED FOR CONSTRUCTION

FOR SUB-STATION AT AGRA (UPPTCL)

Power Grid Corpn. of India Ltd.
Engineering (Civil), Gurgaon, Haryana

APPROVED BY E.D. ENGG-S/SH & T/L WIDE NOTE SHEET
Ref:- C/ENGG/CIVIL/STD/FDN/M25 Dated 09/02/2012

RELEASED FOR TENDER/CONSTRUCTION

FOR NOTES REFER DRG. NO.: -
C/ENGG/STD/FFPH/15

No.	Revision/Issue	Date
1.	R0	02/01/12

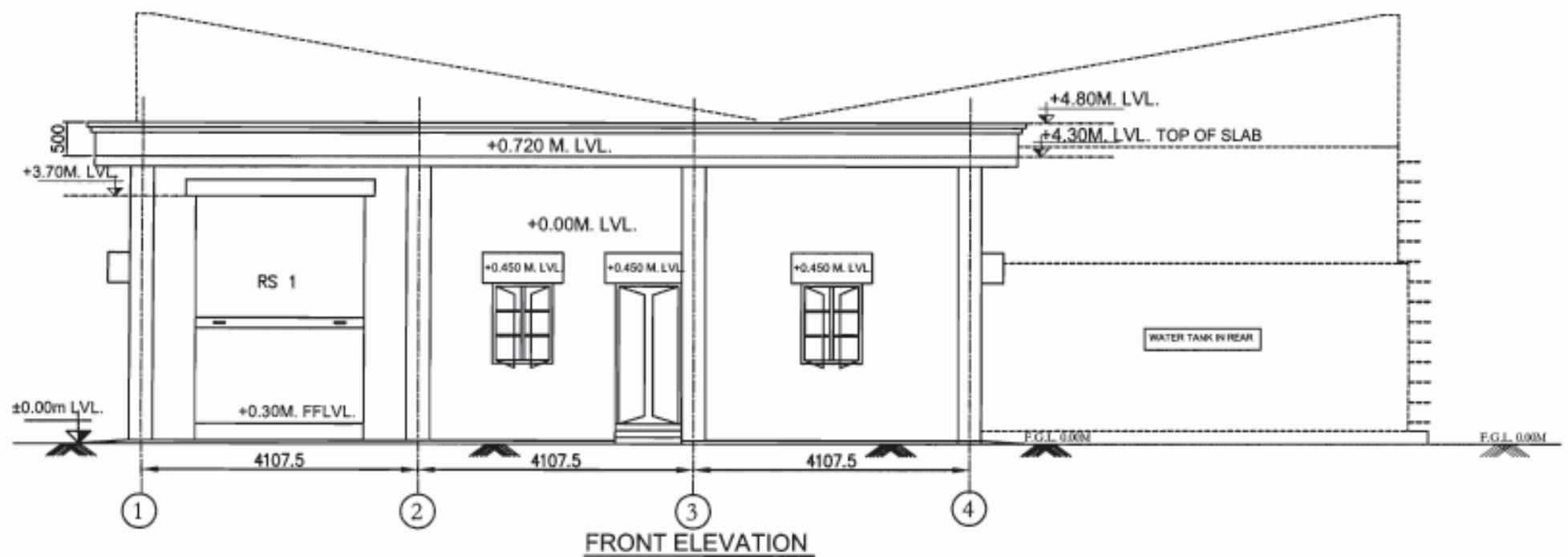
POWER GRID CORPORATION OF INDIA LIMITED
(A Government of India Enterprise)

PROJECT:
STANDARD FIRE FIGHTING PUMP HOUSE & WATER TANK.

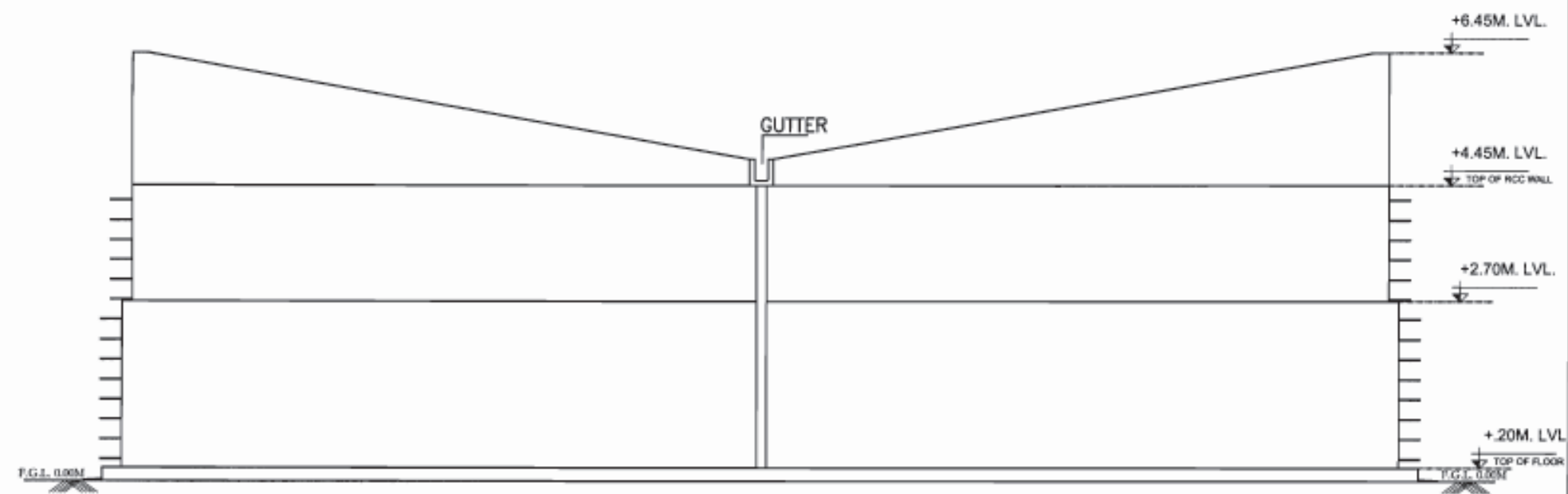
TITLE: ELEVATION FOR FIRE FIGHTING PUMP HOUSE & WATER TANK

DRAWING NO.:
C/ENGG/STD/FFPH-2

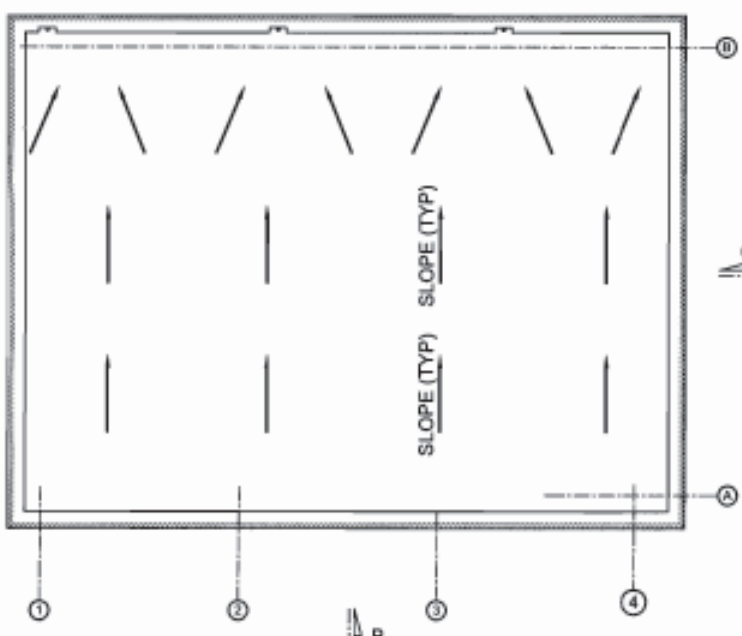
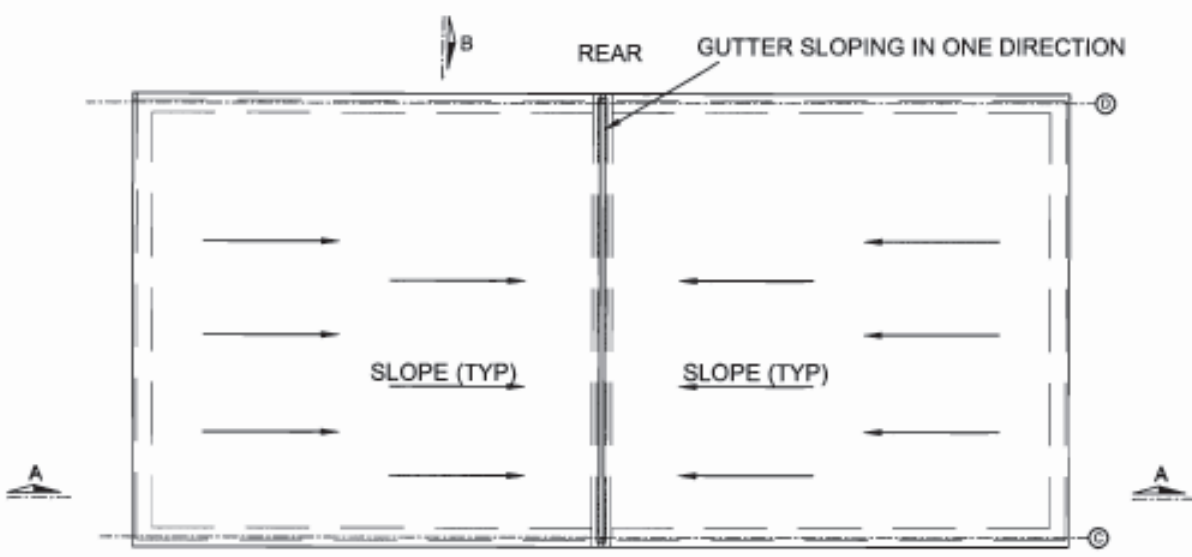
SCALE	SCALE	Sheet
N.T.S.	1	1



FRONT ELEVATION



REAR ELEVATION



TERRACE LEVEL PLAN FOR FFPH

BHEL RELEASED FOR CONSTRUCTION DESTROY EARLIER PRINTS
 SIGNED *[Signature]* DATE 16/3/15
 Transmission Projects Engineering Management

APPROVED BY E.D.ENGG-S/Stn & T/L WDE NOTE SHEET
 Ref:- C/ENGG/CIVL/STD/FDN/M25 Dated 09/02/2012

RELEASED FOR TENDER/CONSTRUCTION

FOR NOTES REFER DRG. NO.:-
 C/ENGG/STD/FFPH/15

RELEASED FOR CONSTRUCTION FOR SUB-STATION AT AGRA (UPPTCL)
[Signature]
 CDE (Designation)
 23/3/15 (Date)
 Power Grid Corpn. of India Ltd. Engineering (Civil), Gurgaon, Haryana

1.	RO	02/01/12
No.	Revision/Issue	Date
POWER GRID CORPORATION OF INDIA LIMITED (A Government of India Enterprise)		
PROJECT: STANDARD FIRE FIGHTING PUMP HOUSE & WATER TANK.		
TITLE: FRONT & REAR ELEVATION & TERRACE FLOOR PLAN FOR FIRE FIGHTING PUMP HOUSE & WATER TANK		
DRAWING NO: C/ENGG/STD/FFPH-3		
SCALE	SCALE N.T.S.	Sheet 1

PREP.	REVD.	REVD.	REVD.	REVD.	APPD.	DATE

