

BHARAT HEAVY ELECTRICALS LIMITED
ESTATE OFFICE BHEL TOWNSHIP, SECTOR-17 NOIDA- 201301



TENDER DOCUMENT

FOR

**Renovation of BHPV Flats (4 Nos.) at Nilgiri & Dawalgiri
Apartments in Sector-34, Noida**

NIT No.01: AA: NOI: ADMN: Renovation-BHPV: 112: 2016-17
Date: 07.04.2016

CONTENTS

- 1- Notice Inviting Open Tender
- 2- Techno commercial Bid - Part A
- 3- Price Bid - Part B

LAST DATE FOR SUBMISSION: 27.04.2016 AT 15:00 Hrs.



भारत हेवी इलेक्ट्रिकल्स लिमिटेड

Bharat Heavy Electricals Ltd.

सम्पदा कार्यालय, सेक्टर - 17, नॉएडा - 201301 (यु. पी.) भारत

BHEL Township : Estate Office, Sector-17, Noida-201 301 (UP) INDIA

NOTICE FOR INVITING OPEN TENDER

Sealed tenders are invited in two part bid for the following work:-

**Name of Work : Renovation of BHPV Flats (4 Nos.) at Nilgiri & Dawalgiri Apartments
in Sector-34, Noida**

**NIT No. : 01: AA: NOI: ADMN: Renovation-BHPV: 112: 2016-17
Dated: 07.04.16**

Period of Completion : 06 Months

Earnest Money : Rs. 1, 00,000/- (Rupees One Lakh only)

DATE OF SUBMISSION & OPENING OF TENDER

**Last date for submission of sealed tender at : 27/04/2016 at 1500 Hrs.
Estate Office, BHEL Township, Sector-17, Noida**

Date of opening the tender : 27/04/2016 at 1530 Hrs.

**Venue for opening of Tender : Estate Office, BHEL
Township, Sector-17,
Noida**

The Tender Document may be obtained from the office of Engineer (HR-TAX), Estate office, Sector-17, Noida free of cost or may be downloaded from BHEL web site (www.bhel.com) or from CPP portal (<http://eprocure.gov.in>). The sealed tender may be sent either by registered post/ Speed Post/ Courier Services or by hand in the office of Engineer (HR-TAX), between 9.00 AM to 5.30 PM on any working day latest by **27/04/2016 at 1500 Hrs.** In case of any clarification the bidder can contact undersigned on Tel. No.-0120-6740997, mobile No.-9953866199 or at e-mail: ujjwal@bhel.in.

(Ujjwal Tomar)
Engineer (HR-TAX)
On behalf of "BHEL"

PART 'A' – TECHNO- COMMERCIAL BID

A. INSTRUCTIONS FOR THE BIDDERS:

1. The offer shall be submitted as per the instructions of tender document. Only one set of tender document duly signed & stamped on each page shall be submitted as detailed further. Tenderer should note specifically that all pages of tender document, including the NIT page for this particular tender shall be submitted by them (after signing/ stamping on each page) as a part of their offer. Price shall not be mentioned by them anywhere in the techno-commercial portion of offer, except in the relevant price bid and submitted in separate sealed envelope. In case of any clarification, bidder may contact this office.
2. Tender documents are also available on BHEL web site (www.bhel.com) & on CPP Portal (<http://eprocure.gov.in/cppp/>) which can be downloaded and used as tender document for submitting the bid.
3. All documents submitted by the Tenderer in his tender may be accompanied with a covering letter giving index interlinking all the documents.
4. No overwriting / correction in tender documents by tenderer shall be allowed. However if correction is unavoidable, the same must be signed.
5. Tender must be submitted in two parts, i.e., (i) Techno-Commercial Bid along with un-price bid (Annexure-E-1) and (ii) Price Bid. The tenderer must submit their tenders in three separate sealed envelopes prominently super scribed as 'EMD Deposit', Part – A 'Techno- commercial bid' and Part-B 'Price Bid' along with NIT No. & due date written on each of the envelope. These three separate envelopes shall together be kept in fourth envelop super scribed with name of Work, NIT No. & due date of opening.
6. Techno-commercial bid should contain all the documents in proof of Pre- qualifying criteria, signed tender document having NIT page, Instructions for tenderer, general conditions, Special Conditions, Contractor's Obligations, un-price bid, all the annexure duly filled & signed by the tenderer and the envelope containing EMD.
7. Bid without requisite Earnest Money (EMD) will not be considered.
8. The tenderer shall submit the Bank details along with a cancelled cheque for payment through NEFT/RTGS.
9. Price Bid should contain only the "Part-B, Price Bid Format" after quoting the rates as specified in the Price bid format.
10. Rate shall be quoted for each item inclusive of all taxes but exclusive of service tax which shall be quoted separately in same price bid format. Rates must be quoted in figures as well as in words.
11. On the date of opening of tender, only Techno-Commercial Bid shall alone be opened.
12. BHEL reserves the right to accept or reject any or all offers without assigning any reason thereof. Also BHEL shall not entertain any correspondence from bidders in this matter (except for the refund of EMD).
13. In case any typing error/other clerical errors is noticed by the tenderer, in the tender documents, the same must be pointed out and got clarified before submission of offer, or else, BHEL's interpretation shall prevail & shall be binding on the tenderer.
14. The Tenderer should accept all terms & conditions of the tender unconditionally. Tenders with deviations from terms and conditions are likely to be rejected.
15. **Tenderers are requested to go through the scope of work, visit the site/location etc. and get fully acquainted with the work place and prevailing working conditions to get all their doubts clarified regarding the above work before submitting the offer. Engineer-in-charge's decision will be full and final in the event of any. Any queries regarding this tender may be clarified from Engineer (HR-TAX), on Telephone No. 0120- 6740997 / mobile No.-9953866199 or e-mail : ujjwal@bhel.in**
16. The tenderers or their representative may attend the opening of techno-commercial bid (Part-A) and the technically qualified tenderers or their representative may attend the opening of Price bid (Part B), if the so desire. The tenders (both the parts) shall be opened on schedule date & time even if the bidders or their representative are not present.

B. PRE QUALIFYING CRITERIA:

- 1) **EMD of Rs. 1,00,000/- (Rupees One Lakh)** only in the form of Pay Order or Demand Draft in favour of BHEL, payable at New Delhi, must be submitted in a separate envelope. **Tender not accompanied with EMD/ EMD submitted in any forms other than PO & DD will not be accepted.**
- 2) The bidder should have **PAN No., TIN Registration No., & Service Tax Registration No.**
- 3) The bidder's average annual financial turnover during the last three financial years ending **31st March'15** should be at least **Rs 9.04 lakhs.**

- 4) The experience of having successfully completed similar Works (**Similar work shall mean execution of Civil renovation/construction works**) during last 7 years ending on **31.03.2016** should be either of the following:-
- a) Three similar completed jobs/ services costing not less than Rs. **12.05 Lakhs** each.

Or

 - b) Two similar completed jobs/ services costing not less than Rs. **15.06 Lakhs** each.

Or

 - c) One similar completed jobs/ services costing not less than Rs. **24.10 Lakhs**.

5) **DOCUMENTS REQUIRED IN SUPPORT OF PRE-QUALIFYING REQUIREMENT:**

- a) **Complete tender document in all respects duly signed & stamped on each and every page as a token of acceptance of all the terms and conditions of tender.**
- b) Self-attested copies of Balance Sheet and Profits & Loss Account statements of last three financial years i.e. FY 2012-13, 2013-14 & 2014-2015 (AY 2013-14, 2014-15 & 2015-16) duly verified by CA .
- c) Self-attested copies of acknowledgements of IT return of last three financial years i.e. FY 2012-13, 2013-14 & 2014-2015 (AY 2013-14, 2014-15 & 2015-16)
- d) Self-attested copies of Work Orders/ Award letters along with certificates of completion in support of proof of experience for the works executed by the bidders during last 7 years ending on 31.03.2016. BHEL reserves the right to cross check the documents from the issuing department/ company.
- e) Self-attested copies of the **PAN card, Certificate of TIN No and Service Tax Registration No.**
- f) The Bidder must Submit a declaration (enclosed at Annexure –E2), that no case is pending with the police/ court against the proprietor/ firm/ partner or the company (Agency). As well as the bidder has not been suspended / blacklisted by any organization.
- g) No deviation certificate as per Annexure –E3 (enclosed) must be signed and stamped.
- h) Bidder must submit the technical details in the enclosed format (Annexure-E4).
- i) Bidder must submit the bidder's details in the enclosed format (Annexure-E5)
- j) Bidder must submit the check list enclosed at Annexure-E6 after duly filled and signed.

C. GENERAL TERMS & CONDITIONS:-

- 1) Tenders received late /in open condition/without EMD/ not meeting the tender condition / incomplete in any respect are likely to be rejected.
- 2) BHEL will not be responsible for the postal delay under any circumstances for non-receipt of Tenders by due date & time.
- 3) BHEL has the right to reject all or any of the tenders and accept any tender(s) irrespective of its / their being the lowest / highest.
- 4) If any information/ documents submitted by the tenderer are found false/fake at any stage, the tender will be cancelled and Earnest Money deposited (EMD) shall be forfeited.
- 5) The offer of the bidders who are on the banned list as also the offer of the bidders, who engage the services of the banned firms, shall be rejected. The list of the banned firms is available on BHEL web site **www.bhel.in**
- 6) The Tenderers are required to quote for the complete scope of work. Tenders for part of the work or incomplete in any respect are liable to be rejected.
- 7) Rates quoted by the bidder will be firm for the contract period or extended period of contract. No price variation and escalation due to increase in labour / material cost will be allowed.
- 8) The rates quoted by the bidder are deemed to be inclusive of all, cost of site clearance and any other incidental works required to complete the work and inclusive of all the taxes but excluding Service Tax. Service Tax shall be quoted extra in the same price bid format.
- 9) The rate should be indicated both in words and figures. All entries in the Tenders must be written in ink or typewritten. Over-writing should be avoided. Corrections, if any, should be attested with signature by the bidder.
- 10) **VALIDITY OF RATES:** Validity of rates will be **90 days from the date of opening of the techno-commercial bid.**
- 11) **EVALUTION CRITERIA:** The criteria of evaluation of techno-commercial bids shall be on the basis of documents submitted by the tenderers. BHEL may finalize successful tenderer by either **opening of sealed price bid** or conducting **online Reverse Auction**. Date of opening of sealed Price Bid / conducting of online Reverse Auction will be intimated, by post or e-mail separately to the Tenderers who qualify in the Techno-Commercial bid. The decision of BHEL will be final in this regard. In case of opening of Price Bid, evaluation of bid will be on total cost to 'BHEL'.

Evaluation of Price Bid will be done on overall L-1 rate inclusive all including Service tax (on Sl.No.-109 of Price Format). In case of tie between the rates of two or more bidders, the Snap bidding system will be followed to arrive the L-1 bidder.

- 12) **REVERSE AUCTION:** BHEL reserves the right to go for Reverse Auction (RA) instead of opening the sealed envelope price bid, submitted by the bidder. This will be decided after techno-commercial evaluation. All bidders to give their acceptance for participation in RA. Non-acceptance to participate in RA may result in non-consideration of their bids, in case BHEL decides to go for RA. In case BHEL decides to go for Reverse Auction, only those bidders who have given their acceptance to participate in RA will be allowed to participate in the Reverse Auction. Those bidders who have given their acceptance to participate in Reverse Auction will have to necessarily submit online sealed bid in the Reverse Auction. Non-submission of online sealed bid by the bidder will be considered as tampering of the tender process and will invite action by BHEL as per extant guidelines in vogue. The Reverse Auction shall be conducted by a Service Provider (empanelled with BHEL) as per the Business Rules and Terms & Conditions.
- 13) **CORRECTION OF ARITHMETIC ERRORS:** Provided that the bid is substantially responsive, BHEL shall correct arithmetical errors on the following basis:
 - a) If there is a discrepancy between the unit price and the total price that is obtained by multiplying the unit price and quantity, the unit price shall prevail and the total price shall be corrected, unless in the opinion of the BHEL there is an obvious misplacement of the decimal point in the unit price, in which case the total price as quoted shall govern and the unit price shall be corrected.
 - b) If there is an error in a total corresponding to the addition or subtraction of subtotals, the subtotals shall prevail and the total shall be corrected.
 - c) If there is a discrepancy between words and figures, the amount in words shall prevail, unless the amount expressed in words is related to an arithmetic error, in which case the amount in figures shall prevail subject to (a) and (b) above.
 - d) If any bidder does not accept the correction of errors, their bids are liable to be disqualified.
- 14) **CONTRACT AGREEMENT:** A contract agreement shall be signed before the start of work on a non-Judicial stamp paper of Rs 100/-. The contract agreement shall be deemed to have become effective from the forenoon of date of award, and will remain in force for a period 06 Months and then after for maintenance period of 12 months. However, this Agreement may be terminated earlier by BHEL at any time by giving one month's notice to the Contractor due to any failure on the part of the contractor in discharging his obligations under the contract, without prejudice to the rights of BHEL to recover any money becoming due under this Agreement. In such a case, the Contractor shall not be entitled to any compensation thereof. The decision of BHEL about the failure on the part of the Contractor shall be final and binding on the Contractor.
- 15) **COMPLETION PERIOD:** The work completion period will be 06 Months from date of award i.e. work order. The Entire work has to be completed within the contract period failing which the liquidated damages (L.D.) will be imposed.
- 16) **QUANTITY VARIATION:** The quantity of any item mentioned in the BOQ may vary $\pm 25\%$ during execution of work due to site requirement.
- 17) **SUBLETING:** The Contractor shall not sublet, transfer or assign the full work or any part thereof to any other person/company/organization. In case it is found that the work has been sublet, the contract shall be terminated immediately & Security Deposit shall be forfeited.
- 18) **EPF & ESI:** The contractor should have **PF code number & ESI code number** before the start of work. However in case of not having any or both the documents, the contractor shall arrange & submit the documents before claiming first running bill.
- 19) Accommodation in any manner will not be provided to the workers of the contractor deployed in the execution of work.
- 20) The contractor will be responsible for the quality of the work and it is to be guaranteed for a period of one year from the date of actual completion of contract.
- 21) Period of guarantee/ maintenance shall mean the period of one year which will be calculated from the date of actual completion of the works certified by the Engineer-in-charge in accordance with conditions of the contract. The period of maintenance shall always be reckoned from the date of completion of the whole of the works as accepted / taken over by Engineer-in-charge.
- 22) **WATER & ELECTRICITY:** Water and electricity shall be supplied to the contractor by BHEL subject to the following conditions:-
 - a) Water & Electricity shall be provided free of cost.

- b) Contractor shall make his/ their own arrangement of water/ electricity connection and laying of pipelines/ connection from existing main of source of supply as directed by Engineer Incharge.
- c) BHEL do not guaranty to maintain uninterrupted supply of water/ electricity and it will be incumbent on the contractor to make alternative arrangement for proper supply of the same at his/ their own cost in the event of any break down in the government water/ electricity mains so that the progress of his/ their work is not held up for the want of the same. No claim of damage or refund will be entertained on account of such break down.

23) **STORES AND MATERIALS ON SITE:**

- a) The contractor shall, during the progress of work, provide, erect and maintain at his own expense all necessary temporary work-shops, stores etc. required for the proper and efficient execution of work. The location & size of the store shall have the approval of the Engineer-in-Charge and the contractor shall at all times keep them tidy in a clean and sanitary condition to the entire satisfaction of the Engineer-in-Charge.
- b) All materials for the work are to be deposited by the contractor only in places to be indicated by the Engineer-in-Charge.
- c) The safety & security of the contractor's materials will be the responsibility of contractor himself. BHEL will not provide any compensation due to theft or loss of contractor's materials.
- d) The stores provided by the contractor will not be utilized as the accommodation for the workers or for any other purpose.
- e) Contractor will remove the temporary stores/ structure before claiming the final bill.

24) **PAYMENT TERMS:**

- a) Payment shall be made for the actual executed quantity of work after recording joint measurement on Measurement Book (MB) by Engineer-in-Charge.
- b) Measurement shall be recorded in measurement book (MB) maintained by the Engineer-in-Charge who shall make entries regarding the work executed by the contractor under different items of bill of quantity (BOQ). These entries will be counter-signed by the contractor.
- c) For measurement of work the norms of Indian Standards (IS) as mentioned in CPWD specifications for each items of work shall be followed.
- d) Measurement shall be taken jointly by Engineer-in-Charge or his representative on the part of the BHEL & the contractor.
- e) The contractor shall provide assistance with appliances and other things necessary for measurement without extra charge.
- f) If the contractor / his representative fails to attend when required for measurement, the Engineer-in-Charge shall have power to proceed by himself to take measurements and in that case, these measurements shall be accepted by the contractor as final.
- g) No advance payment or the payment for mobilization of work will be made to the contractor.
- h) No payment shall be made for the work done without the permission of Engineer-in-Charge.
- i) Running bills payment (If demanded by contractor) against the work executed shall be made to the contractor.
- j) The payment of final bill will be made only after obtaining certificate of satisfactory completion of the work by the Engineer-in-Charge, clearance of the site & clearance of all the liabilities on contractor's part. No claim will be entertained after signing the final bill.
- k) Bills raised by the Contractor shall be certified by the official in-charge of BHEL and the payments will be made within three weeks by NEFT/RTGS from the date of receipt of in discrepant bill.
- l) The contractor shall not be entitled to any interest with respect to any money which may be due to him from BHEL.
- m) All payment will be subject to deduction of taxes at source as per rules.
- n) Any tax incurred on purchase of materials by the contractor in respect of this contract shall be treated as included in the charges and BHEL will not entertain any additional claim whatsoever in this respect.
- o) The Service Tax shall be paid as per the quoted rate of Service Tax (at Sl. No. -107 (a) or 108 of Price Format). No payment of Service Tax will be made if not quoted by the tenderer in the Price Format.

25) **PROGRESS OF WORK AND PENALTY FOR DELAY:**

- a) The project is time bound and works shall have to be carried out at desired pace throughout the execution period so as to complete the work in the stipulated time. For this, contractor shall have to submit bar chart within 10 days of issue of LOI with financial values for execution of the whole project. The schedule of work (Bar chart) shall be accepted by BHEL before signing the agreement.

- b) In case there is a delay attributable to contractor in completing the work in 06 Months, L.D. will be imposed @ ½ % (i.e. 0.5 %) per week of delay. However the total penalty due to delay will be up to maximum 10% of total contract value. LD will be calculated on the total contract value.
- 26) **L.D. FOR BAD QUALITY OF WORK:** If the quality of work is not satisfactory, BHEL reserves the right to impose the LD up to maximum 10% of the contract value.
- 27) Tender LD i.e. for delay as well as quality is to be considered in TOTO i.e. total LD shall be 20% of the contract value.
- 28) Regular meeting (fortnightly or as decided by BHEL) shall be held between BHEL and contractor to review the issues related to progress, penalty, quality and any other aspect.
- 29) The contractor shall have to deploy sufficient number of skilled, semi-skilled and unskilled manpower for quality and timely completion of the work.
- 30) No excuses like hindrance because of extreme weather conditions, non-availability of labour and material etc. will be entertained for not completing the work in time.
- 31) All necessary precautions with respect to safety at site and environmental aspects and their impacts shall have to be taken by the contractor for activities performed by his workers.
- 32) In case of any dispute, the decision taken by BHEL Management will be final and binding on the contractor.
- 33) No party shall be permitted to tender for work in BHEL in which any of their near relatives is an employee connected with the award and execution of the contract. They shall also intimate the names of persons who are working with them in any capacity or subsequently employed by them and who are near relatives of any employee of the BHEL. Any violation of this condition which comes to the Notice of the BHEL after the contract is awarded will entitle the BHEL to treat the contractors as having committed a breach of contract and to exercise all the rights and remedies available to the BHEL on account thereof.
- 34) **EARNEST MONEY DEPOSIT (EMD):**
- 1) **EMD of Rs. 1,00,000/- (Rupees One Lakh Only)** in the form of Pay order or Demand Draft in favour of “Bharat Heavy Electricals Ltd.”, payable at any scheduled Bank at Delhi will only be acceptable. Earnest Money is to be paid by each tenderer to ensure the tenderer does not refuse to execute the Work after it is awarded to him.
 - 2) EMD of the tenderer will be forfeited if:
 - a) After opening of the tender the tenderer revokes his tender within the validity period or increase his earlier quoted rates.
 - b) The tenderer does not commence the Work within the period as per LOI/ Contract.
 - 3) EMD given by all unsuccessful tenderers shall be refunded normally within 15 days of acceptance of award of work by the successful tenderer.
 - 4) EMD shall not carry any interest.
- 35) MSE suppliers can avail the intended benefits only if they submit along with the offer, attested copies of either EM II certificate having deemed validity (five years from the date of issue of acknowledgement in EM II) or valid NSIC certificate or EM II certificate along with attested copy of a CA certificate (Format enclosed at Annexure -1 where deemed validity of EM II certificate of five years has expired) applicable for the relevant financial year (latest audited). Date to be reckoned for determining the deemed validity will be the date of bid opening (Part 1 in case of two part bid). On submission of such document will lead to consideration of their bid at par with other bidders. No benefits shall be applicable for this enquiry if any deficiency in the above required document are not submitted before price bid opening. If the tender is to be submitted through e-procurement portal, then the above required documents are to be uploaded on the portal . documents should be notarized or attested by a Gazetted officer.
- 36) **SECURITY DEPOSIT:**
- a) The security deposit shall be collected from the successful tenderer. The rate of Security Deposit will be as below :
 - Upto Rs. 10 lakhs : 10% of work order value**
 - Above Rs. 10 lakhs & upto Rs. 50 lakhs: Rs. 1 Lakh + 7.5 % of the amount exceeding 10 lakhs**
 - Above Rs. 50 lakhs: Rs 4 lakhs + 5% of amount exceeding Rs 50 lakhs**
 The security deposit should be collected before start of work by the contractor.
 - b) Security deposit may be furnished in any one of the following forms:
 - i) Cash (as permissible under the Income Tax Act)
 - ii) Pay order / demand draft in favour of BHEL.

- iii) Local cheques of schedule banks, subject to realization.
 - iv) Securities available from Post Offices such as National Saving Certificates, Kisan Vikas Patras etc. (Certificate should be held in the name of the contractor furnishing the security and duly pledged in favour of BHEL and discharged on the back).
 - v) Bank Guarantee from Schedule Banks/ Public Financial Institutions as defined in the Companies Act. The Bank Guarantee format should have the approval of BHEL.
 - vi) Fixed deposit Receipt issued by Schedule Banks/ Public Financial Institutions as defined in the Companies Act. The FDR should be in the name of the contractor, A/C BHEL, duly discharged on the back.
 - vii) Security deposit can also be recovered at the rate of 10% from the running bills. However in such cases at least 50% of the Security Deposit should be deposited before start of the work and balance 50% may be recovered from the running bills.
 - viii) EMD of the successful bidder shall be converted & adjusted against the security deposit, if so desired by the successful tenderer .
 - ix) The Security Deposit shall not carry any interest.
(Acceptance of Security Deposit against Sl.No. (iv) & (vi) above will be subject to hypothecation or endorsement on the documents in favour of BHEL. However, BHEL will not be liable or responsible in any manner for the collection of interest or renewal of the documents or in any other matter connected therewith).
- c) The security deposit will be released only after completion of Guarantee/ Maintenance period of **one year** from the date of actual completion of work.
- d) Failure to pay the security deposit shall be treated as failure to discharge the duties under the contract and shall result in cancellation of the contract and the contractor shall be liable to compensate BHEL for any losses incurred by BHEL. BHEL reserves the right to appropriate any part / whole of the amount of the security deposit without prejudice to other claims against the contractor for losses suffered by BHEL due to failures on the part of the contractor, due to termination of contract or contractor becoming disqualified because of liquidation / insolvency. The decision of BHEL in respect of such losses, damages, charges, expenses or costs, shall be final and binding to the contractor.
- 37) **TERMINATION OF CONTRACT ON DEATH:** Without prejudice to any of the rights or remedies under this contract, if the contractor dies, the accepting officer shall have the option of terminating the contract without compensation to the contractor's survivors.
- 38) **RECOVERY FROM CONTRACTOR:** Whenever under the contract, any sum of money shall be recoverable from or payable by the contractor, the same may be deducted from any sum then due or which at any time thereafter may become due to the contractor under the contract or under any other contract with BHEL or from his security deposit, or the contractor shall pay the claim on demand without any terms & conditions.
- 39) **POST TECHNICAL AUDIT OF WORK AND BILLS:** BHEL reserves the right to carry out a post payment audit and technical examination of the work and final bill including all supporting vouchers, abstracts etc. and to enforce recovery of any sums becoming due as a result thereof in the manner provided into the proceeding sub-paragraph provided however, that no such recovery shall be enforced after three years of passing the final bill.
- 40) **ARBITRATION / CONCILIATION:** In the event of any dispute arising between the parties hereafter referred as BHEL and Contractor in respect of or connected with this contract, General & Special terms & conditions of tender, then the same shall be referred to Arbitration and Arbitrator will be nominated by the Head of Administration of BHEL Corp. Office, New Delhi, whose decision shall be final and binding on both the parties. However, any differences or doubt pertaining to meaning/ interpretation of any phrase word used in terms or in the schedule of services, their nature and manner of rendering of such services shall be the excepted matter and be referred to the Head of Administration of BHEL Corp. Office, New Delhi, whose decision shall be the final and binding. The provisions of Arbitration and Conciliation Act, 1996 or any statutory modification and re-enactment thereof will apply to such arbitration provided however, in all matters the venue of proceedings will be Delhi and only Delhi or appropriate Courts will have jurisdiction over the same.
- 41) **RISK CLAUSE:** BHEL reserves the right to terminate the contract due to any failure on the part of the Contractor in discharging his obligations under the contract or in the event of his becoming insolvent or going into liquidation. The decision of the BHEL about the failure on the part of the Contractor shall be final and binding on the Contractor. In the event of any failure on the part of the Contractor, BHEL shall have the right without any prejudice to get the work done through any other alternate agency at the risk and cost of Contractor. The additional cost including loss, if any incurred by BHEL will be recovered from the Contractor.

D) SPECIAL TERMS & CONDITIONS RELATED TO THE SUBJECT WORK:

1. The work will be carried out as per BOQ enclosed and as per latest CPWD Specifications and relevant IS codes for all the works. In case of any doubt regarding the specification and its quality of work, Engineer In-Charge's decision will be final and binding on the contractor.
2. The subject works shall be carried out up to the satisfaction of Engineer-in-charge.
3. The Typical drawings/plan of the flats under renovation is enclosed at Annexure-E7. It may be noted that these are rough drawings for indicative purpose only.
4. The Cement to be used in the Works shall be 43 Grade Ordinary Portland cement conforming to IS: 8112.
5. Cement shall be kept, at all times, in covered storage in an approved manner. No cement shall be kept on the site longer than three months before use.
6. All the materials shall be arranged by the contractor. No materials shall be issued from BHEL.
7. All tools and tackles required for proper completion of work shall be arranged by contractor.
8. After completion of the work at the site, contractor will remove all unwanted material/ rubbish from the site with no extra claim.
9. The Source of Water and Power Supply will be given at one point. All other arrangements have to be arranged by Contractor.
10. Proper curing of all the cement work as per IS specifications shall be done by contractor on no extra claim.
11. **CARE OF BUILDINGS:** Care shall be taken by the contractor to avoid damage to the existing buildings during execution of work. He shall be responsible for repairing all the damages and restoring the same to their original finish at his cost. He shall also remove at his costs all unwanted and waste materials arising out of his work from the site.
12. **QUALITY & MAKE OF MATERIALS:** All materials and fittings/ fixtures supplied by the contractor shall be new. They shall be such design, size and materials as given in BOQ and to satisfactorily function. The make /brand of materials/ fittings shall be as per following table. The equivalent make/ brand shall be approved by Engineer-in-charge.

Sl. No.	Name of Material/ Fittings	Make/ Brand
A	CIVIL ITEMS :	
1	Cement	Birla, ACC, Ambuja or equivalent
2	CPVC Pipes & Fittings	Flowguard, Astral, Supreme or equivalent
3	uPVC Pipes & Fittings	Prakash, Tirupati or Jain or equivalent
4	CP bath Fittings	Jaguar, Metro, Zim or equivalent
5	PTMT Fittings	Prayag or equivalent
6	China ware items like WC panes, Flushing Cistern & Wash Basin etc.	Hindware, Cera, Parryware or equivalent
7	Glazed & Vitrified Tiles	Kajaria, Somany, Nitco or equivalent
8	PVC Doors	Rajshri or equivalent
9	Float Glass panes	Modi Guard, Saint Gobain, or equivalent
10	Flush Door & Ply board	Century, Green Ply, Kitply, Tirupati or equivalent
11	Plaster of Paris (POP)	Sakarni, ACC or Birla or equivalent
12	Wall Primer	Asian Paints (Decoprime wall primer), Berger (BP White Primer), Nerolac (Wall Primer)
13	Oil Bound Distemper (OBD)	Asian Paints (Tractor Acrylic Distemper), Berger (Bison Acrylic Distemper), Nerolac (Beuty Acrylic Distemper)
14	Wood Primer	Asian Paints (Wood Primer), Berger (Wood Primer), Nerolac Primer
15	Synthetic Enamel Paint	Asian Paints (Apolite Premium Gloss Enamel), Berger (Luxol High Gloss Enamel), Nerolac (Synthetic Enamel)

B	ELECTRICAL ITEMS:	
1	Copper Cables for wiring	Finolex, Havells, Anchor, Polycab or L&T
2	PVC Conduit pipe & pipe fittings	AKG, Polypack or equivalent
3	Switch, Socket, Holder, Ceiling Rose, Electronic Regulator, Telephone Socket, TV Socket.	Havells, Anchor, Philips or equivalent
4	MCB Distribution Board & MCB/MCCB	Havells, Hager, ABB or equivalent
5	Ceiling Fans, Exhaust Fans.	Havells, Bajaj, Crompton Greaves or equivalent

13. **INSPECTION OF MATERIALS:** All the materials delivered by the contractor at site shall be inspected and verified by Engineer-in-charge before use.
14. **WORKMANSHIP:** Good workmanship is an essential requirement to be complied with. The entire work shall conform to sound engineering practice. In case of bad workmanship re-work will be done by the contractor on no extra claim
15. **SUPERVISION OF WORK:** The contractor will deploy sufficient numbers of Supervisors/ Engineers of appropriate qualification and experience to ensure proper execution of work. They will carry out instructions of Engineer-in-charge and other senior officers of BHEL during the progress of work.
16. **GUARANTEE / MAINTENANCE PERIOD:** The work shall be guaranteed against any inferior quality/ workmanship. The guarantee / maintenance period will be for a period of **12 months** from the date of actual completion of contract. The full Security Deposit (SD) amount shall be retained for the guarantee/ maintenance period and it shall be released after satisfactory carrying out all rectification/ repaired works as informed by the Engineer-in-charge. In case of not attending any rectification/ repairing work by the contractor, the rectification work will be carried out by any outside agency and recovery will be done from the contractor.
17. **The bidders are advised to inspect & examine the site and obtain all the necessary information related to the scope of work/ specifications, risk & contingencies involved before submitting their offers.** Any queries regarding this tender may be clarified from the Engineer (HR-TAX) on Tel. No.-0120-6740997, mobile No.-9953866199 or at e-mail: ujjwal@bhel.in.
- **SANITARY & PLUMBING WORKS:**
 - a. After dismantling all the serviceable items like CI pipes/ fittings, GI pipes/ fittings, bib cocks, stop cocks, PVC connections, shower rose, flushing cistern, wash basin etc. shall be deposited in the BHEL stores and all the unserviceable items/ rubbish shall be removed from the site.
 - b. All the materials & fittings shall be standard make & quality as per BOQ and which shall be conforming to the relevant IS codes.
 - c. For concealed plumbing work, all the joints must be checked by applying water pressure so that there is no leakage from any joints, and it has to be verified by the Engineer-in-charge before plastering work.
 - **MASONRY & TILING WORKS:**
 - a. The ceramic glazed floor & wall tiles shall be provided in toilets & bath rooms. Vitrified tiles shall be provided in all other area of flats.
 - b. The existing marble chips/concrete flooring & dado of toilets/ bathrooms shall be dismantled. The fresh cement mortar plaster on dado and cement concrete flooring shall be done before fixing glazed tiles in toilets/ bathrooms.
 - c. The vitrified tiles flooring shall be laid over the existing flooring without dismantling old flooring with cement based high polymer modified quick-set tile adhesive (Water based). The old flooring shall be thoroughly cleaned and checked for undulations, if any shall be rectified with cement mortar 1:3 (1 cement: 3 coarse sand). Old cement concrete surface shall be hacked and cleaned off to have proper bond with the old surface. The old existing skirting in rooms shall be dismantled before fixing vitrified tiles on skirting. The colour, design & pattern of tiling shall be as per direction of Engineer-in-charge.
 - **SPECIAL CONDITIONS FOR WOOD, ALUMINIUM & PVC DOOR WORKS:**
 - a. All the existing windows/ ventilators and doors of toilets/ bathrooms along with choukhats shall be dismantled and removed from the site.
 - b. PVC Doors with PVC Frames shall be provided in the toilet & bathrooms.
 - c. Aluminium glazed & wire mesh windows/ ventilators shall be provided in place of all the existing windows/ ventilators.
 - d. Cup board shutters with 25 mm thick particle boards shall be provided in kitchen.

- e. The colour, pattern & design of PVC doors, cup boards & aluminium windows/ ventilators shall be as per direction of Engineer-in-charge.
- f. Aluminium sections used for windows/ ventilators shall be suitable for use to meet architectural designs and shall be subject to approval of the Engineer-in-Charge for technical, structural, functional and visual considerations.
- g. The samples of one meter length of each aluminium section shall be approved by Engineer-in-charge before use.
- h. All the samples of aluminium sections shall be weighted and kept in custody of Engineer-in-charge and each lot of aluminium sections shall be verified with the samples before use.
- i. All the fittings for doors , windows, ventilators & cup boards shall be approved by Engineer-in-charge before use.
- **SPECIAL CONDITIONS FOR POP, OBD & ENAMEL PAINTING WORKS:**
 - a. All the weak plasters of ceiling & walls shall be removed, cleaned and repaired with cement plaster.
 - b. All loose pieces and scales shall be removed by sand papering. The surface shall be cleaned of all grease, dirt etc.
 - c. The work of wall painting will be done in four stages, namely, scrapping the surface, applying plaster of Paris putty (POP), applying wall primer and distempering with Oil Bound Washable distemper (OBD) in two or more coats. Each stage shall be verified by the Engineer-in-charge before start of next stage. Also before second coat of OBD the first coat will be verified by Engineer-in-charge.
 - d. Under the item of scrapping & surface preparation, contractor will prepare the surface smooth after removing old layers OBD or any other materials and filling all small holes with putty.
 - e. Under the item providing & applying Plaster of Paris putty (POP) of 2 mm thickness, the contractor shall make the surface smooth & free from any undulation by applying a layer of paste of POP with splint (Phatti). The thickness of 2 mm shall be the average thickness. The thickness of POP may be more than 2 mm on some of the portion of surface to remove the undulation.
 - f. In case the undulation can not be removed in POP at any surface of wall, the existing plaster should be dismantled and fresh cement plaster should be done to remove the large undulations before applying POP on that surface of wall.
 - g. The surface smoothness shall be checked with Plum Bob as well as in the reflection of light. In case of any un-evenness, re work of POP will be done by contractor without any extra claim.
 - h. Similarly the Enamel Painting of doors shall be done in two stages namely applying of Primer and painting with synthetic enamel paints in two or more coats. Each stage shall be verified by the Engineer-in-charge before start of next stage. Also before second coat of enamel painting the first coat will be verified by Engineer-in-charge.
- **SPECIAL CONDITIONS FOR ELECTRICAL WORKS:**
 - a. Concealed electrical wiring with copper wire shall be provided by the contractor. The chase cutting and repairing with cement mortar to make the wall in original condition shall be done by the contractor without any extra claim.
 - b. The contractor shall engage suitably skilled workmen of various categories for execution of electrical work.
 - c. All electrical works shall be carried out in accordance with the provisions of Indian Electricity Act, 1910 and Indian Electricity Rules, 1956 amended up to date.
 - d. The work shall be carried out in accordance with the wiring diagram as approved by the Engineer-in-charge. The wiring diagram shall indicate the positing of switch boards, distribution boards, the runs of various mains & sub mains and the positions of all points with their controls.
 - e. All circuits shall be indicated and numbered in the wiring diagram and the points shall be given the same number as the circuit to which they are electrically connected.
 - f. The wiring with proper colour coding shall be done.
 - g. All components in wiring installations shall be of appropriate ratings of voltage, current, and frequency, as required at the respective sections of the electrical installations in which they are used.
 - h. All conductors, switches and accessories shall be of such size as to be capable of carrying the maximum current, which will normally flow through them, without their respective ratings being exceeded.
 - i. All components/ fittings shall conform to relevant Indian Standard Specifications (IS codes).
 - j. Similar parts of all switches, lamp holders, and distribution fuse boards, switch gears, brackets, fans and all other fittings of the same type shall be interchangeable in each installation.
 - k. After the work is completed in a flat, it shall be ensured that the installation is tested and commissioned.

E) CONTRACTOR'S OBLIGATION:

- 1) Contractor shall supervise the Work allotted to him to be carried out by his workforce. The contractor shall visit the site every day to ensure the work is carried out in fast pace for completion within schedule time.
- 2) Contractor to ensure that the workforce deployed in the premises of BHEL are physically and mentally fit and do not have any criminal record. Such employees should possess requisite skill, proficiency, qualification, experience etc.
- 3) The workforce deployed by the contractor shall be hail and healthy and should not be suffering from any communicable diseases.
- 4) Contractor to accept full and exclusive liability for the wages, Allowances, PF, ESI, for the workforce deployed by the contractor and other obligation referred under the law at present and any future taxes imposed by the Government / Local Bodies.
- 5) BHEL will have no liability whatsoever concerning the persons deployed by the contractor for the purpose. The contractor shall keep the Company indemnified against all losses or damages or liability arising out of or imposed in the course of employment of persons by the contractor.
- 6) Statutory requirement of the local authority / State Govt. / Central Govt. shall be responsibility of the contractor.
- 7) The contractor will be solely responsible for any unlawful act of their workforce while on duty. In case of theft or loss of Company's property take place due to the negligence or carelessness of workforce, the contractor will be responsible and shall make good of the same.
- 8) The Contractor shall duly comply with all acts, laws, or other statutory rules, regulations, bye-laws applicable or which might be applicable to with regard to the performance of the contract included herein or concerning this Agreement but not limited to Minimum Wages Act- 1948, Contract Labour (Regulation & Abolition) Act, 1970, Industrial Dispute Act, 1947, Workmen's Compensation Act 1923, Employees' State Insurance Act 1948 (to the extent as may be applicable, if any), Employees' Provident Fund and Misc. Provisions Act, 1952 and the amendments made thereafter to these Acts / Laws and from time to time take such steps as may be deemed necessary in this regard. The Contractor shall keep the Company Indemnified against all penalties, claims and liabilities of every kind under or for any violation of such acts, laws or regulations etc. by him or his workers.
- 9) In case, while on duty and during the course of engagement in work premises of the Company under this Agreement, if any of the Contractor's workforce suffers with any injury / indisposition due to accident or other natural calamities, the Contractor shall ensure that immediate and adequate medical aid viz., first - aid and subsequent treatment facilities are provided to the person(s) concerned free of cost without fail. In addition, the Contractor shall also be liable for meeting with statutory liabilities like ESI etc. in respect to his workers.
- 10) The Contractor shall be fully responsible for the timely payment of wages, Allowances, Bonus or any other benefits payable under the aforesaid Acts, Laws and regulations to the workforce engaged by him at the work premises of the Company. Contractor shall also be fully responsible for timely deposit of PF and ESI with the appropriate authority including submission of return of PF & ESI and issue of PF slip issued by the PF Authority. The Company shall not be responsible for these payments or any other liability on this account. The Contractor shall also indemnify and compensate the Company for any liability incurred by the Company, if any, including costs incurred thereon. In that event the nominated officer of the Company shall be entitled to recover the amount so paid, from the contractor, including forfeiture of the Security Deposit; and, if the sum so payable and / the Security Deposit is less than the Company's claim, it shall be lawful for the Company to recover the balance amount as a debt from the Contractor.
- 11) The Contractor shall indemnify and compensate the Company, if the Company as Principal Employer under the Contract Labour (Regulation and Abolition) Act, 1970 becomes liable to assume any liability towards the workforce engaged by the contractor. In that event, the provisions relating to recover as provided in relevant clauses of the said Act shall be applicable in Toto.
- 12) The Contractor shall be held responsible for any damage / loss to the work premises /or the properties of the Company (i.e. missing or broken fittings, equipments, furniture etc. and loss of such things) caused due to the negligence of his work force and shall have to replace the same at his own cost. The decision of the Engineer-in-charge shall be final and binding on the Contractor.
- 13) The contractor shall hand over a copy of all legal and statutory documents and records to BHEL for fulfilling any future requirement with the statutory authority.
- 14) The contractor shall abide by all the rules / regulations / status imposed by the Govt. or other concerned authorities. The contractor will be responsible for workmen's compensation & other requirements of local Municipalities / Govt. or any other law regulating bodies

- 15) Contractor to maintain appropriate records of his employees deployed to carry out the job (s).
- 16) Contractor to get all his employees insured against all type of risks at his own cost.
- 17) Contractor to ensure that all precautions are taken for safety of his employees and equipments.
- 18) In the event of termination of contract for any reason whatsoever, the contractor shall withdraw all his employees from the site of BHEL. In case contractor decides to terminate services of his employees, he should settle all terminal dues including retrenchment compensation.
- 19) The successful tenderer must comply to all statutory labour law regulations applicable to this contract like minimum wages act, timely payment of wages etc. including taking of insurance cover etc. for workers employed for this contract. Any obligation on account of the above will be the liability of the successful tenderer.
- 20) In case of any objection from any statutory / local authority, the contractor has to liaison with them for smooth progress of work.
- 21) The Contractor shall ensure proper conduct and behavior of the workforce engaged by him on the site and shall remove with immediate effect, the engagement of such person(s) who does/do not conduct himself / themselves properly or misbehave(s) with the residents of township or the staff of Estate office.

(Ujjwal Tomar)
Engineer (HR-TAX)
On behalf of “BHEL”

UN-PRICE BID

Name of Work : **Renovation of BHPV Flats (4 Nos.) at Nilgiri & Dawalgiri Apartments in Sector-34, Noida.**

NIT No. : **01: AA: NOI: ADMN: Renovation-BHPV: 112: 2016-17**

Dated: 07.04.2016

S. N.	Description of Item	Unit	Qty	Rate	Amount
1	Demolishing cement concrete manually/ by mechanical means including disposal of material within 50 metres lead as per direction of Engineer - in - charge Nominal concrete 1:3:6 or richer mix (i/c equivalent design mix)	cum	2.57	XXXXX	XXXXX
2	Dismantling tile work in floors and roofs laid in cement mortar including stacking material within 50 metres lead For thickness of tiles 10 mm to 25 mm	sqm	55.00	XXXXX	XXXXX
3	Dismantling doors, windows and clerestory windows (steel or wood) shutter including chowkhats, architrave, holdfasts etc. complete and stacking within 50 metres lead of area 3 sq. metres and below	each	73.00	XXXXX	XXXXX
4	Dismantling old plaster or skirting raking out joints and cleaning the surface for plaster including disposal of rubbish to the dumping ground within 50 metres lead.	sqm	115.00	XXXXX	XXXXX
5	Dismantling G.I. pipes (external work) including excavation and refilling trenches after taking out the pipes, manually/ by mechanical means including stacking of pipes within 50 metres lead as per direction of Engineer-in-charge 15 mm to 40 mm nominal bore	metre	140.00	XXXXX	XXXXX
6	Dismantling C.I. pipes including excavation and refilling trenches after taking out the pipes, manually/ by mechanical means breaking lead caulked joints, melting of lead and making into blocks including stacking of pipes & lead at site within 50 metre lead as per direction of Engineer-in-charge Up to 150 mm diameter	metre	140.00	XXXXX	XXXXX
7	Cutting holes up to 30x30 cm in walls including making good the same With common burnt clay F.P.S. (non modular) bricks	each	14.00	XXXXX	XXXXX
8	Providing and fixing soil, waste and vent pipes 100 mm dia centrifugally cast (spun) iron socket & spigot (S&S) pipe as per IS: 3989	metre	120.00	XXXXX	XXXXX
9	Providing and fixing trap of self cleansing design with screwed down or hinged grating with or without vent arm complete, including cost of cutting and making good the walls and floors 100 mm inlet and 100 mm outlet sand cast iron S&S as per IS: 3989 each	each	6.00	XXXXX	XXXXX
10	Providing and filling the joints with spun yarn, cement slurry and cement mortar 1:2 (1 cement : 2 fine sand) in S.C.I./ C.I. Pipes 100 mm dia pipe.	each	24.00	XXXXX	XXXXX
11	Providing and fixing M.S. holder-bat clamps of approved design to Sand Cast iron/cast iron (spun) pipe embedded in and including cement concrete blocks 10x10x10 cm of 1:2:4 mix (1 cement : 2 coarse sand : 4 graded stone aggregate 20 mm nominal size), including cost of cutting holes and making good the walls etc. for 100 mm dia pipe.	each	20.00	XXXXX	XXXXX
12	Providing and fixing bend of required degree with access door, insertion rubber washer 3 mm thick, bolts and nuts complete, 100 mm dia Sand cast iron S&S as per IS - 3989.	each	8.00	XXXXX	XXXXX
13	Providing and fixing plain bend of required degree 100 mm dia Sand cast iron S&S as per IS : 3989.	each	8.00	XXXXX	XXXXX
14	Providing and fixing single equal plain junction of required degree with access door, insertion rubber washer 3 mm thick, bolts and nuts complete 100x100x100 mm Sand cast iron S&S as per IS - 3989.	each	8.00	XXXXX	XXXXX
15	Providing and fixing single equal plain junction of required degree 100x100x100 mm Sand cast iron S&S as per IS - 3989.	each	8.00	XXXXX	XXXXX
16	Providing lead caulked joints to sand cast iron/centrifugally cast (spun) iron pipes and fittings of diameter 100 mm.	each	8.00	XXXXX	XXXXX
17	Providing and fixing terminal guard 100 mm Sand cast iron S&S as per IS - 3989.	each	8.00	XXXXX	XXXXX

18	Providing and fixing Chlorinated Polyvinyl Chloride (CPVC) pipes, having thermal stability for hot & cold water supply, including all CPVC plain & brass threaded fittings, i/c fixing the pipe with clamps at 1.00 m spacing. This includes jointing of pipes & fittings with one step CPVC solvent cement and the cost of cutting chases and making good the same including testing of joints complete as per direction of Engineer in Charge. Concealed work, including cutting chases and making good the walls etc. 20 mm nominal outer dia Pipes.	mtr.	130.00	XXXXXX	XXXXXX
19	Providing and fixing Chlorinated Polyvinyl Chloride (CPVC) pipes, having thermal stability for hot & cold water supply, including all CPVC plain & brass threaded fittings, including fixing the pipe with clamps at 1.00 m spacing. This includes jointing of pipes & fittings with one step CPVC solvent cement and testing of joints complete as per direction of Engineer in Charge. Internal work - Exposed on wall 20 mm nominal outer dia Pipes.	mtr.	20.00	XXXXXX	XXXXXX
20	Providing and fixing Chlorinated Polyvinyl Chloride (CPVC) pipes, having thermal stability for hot & cold water supply including all CPVC plain & brass threaded fittings This includes jointing of pipes & fittings with one step CPVC solvent cement ,trenching ,refilling & testing of joints complete as per direction of Engineer in Charge. External work-20 mm nominal outer dia Pipes	mtr.	30.00	XXXXXX	XXXXXX
21	Providing and fixing C.P. brass stop cock (concealed) of standard design and of approved make conforming to IS:8931, 15 mm nominal bore.	each	10.00	XXXXXX	XXXXXX
22	Providing and fixing PTMT angle stop cock 15mm nominal bore, weighing not less than 85gms.	each	28.00	XXXXXX	XXXXXX
23	Providing and laying in position cement concrete of specified grade excluding the cost of centering and shuttering - All work up to plinth level 1:2:4 (1 cement : 2 coarse sand : 4 graded stone aggregate 20 mm nominal size)	cum	2.50	XXXXXX	XXXXXX
24	Providing and fixing water closet squatting pan (Indian type W.C. pan) with 100 mm sand cast Iron P or S trap, 10 litre low level white P.V.C. flushing cistern, including flush pipe, with manually controlled device (handle lever) conforming to IS : 7231, with all fittings and fixtures complete, including cutting and making good the walls and floors wherever required. White Vitreous china Orissa pattern W.C. pan of size 580x440 mm with integral type foot rests.	each	4.00	XXXXXX	XXXXXX
25	Providing and fixing white vitreous china pedestal type water closet (European type) with seat and lid, 10 litre low level white vitreous china flushing cistern & C.P. flush bend with fittings & C.I.brackets, 40 mm flush bend, overflow arrangement with specials of standard make and mosquito proof coupling of approved municipal design complete, including painting of fittings and brackets, cutting and making good the walls and floors wherever required, W.C. pan with ISI marked white solid plastic seat and lid.	each	1.00	XXXXXX	XXXXXX
26	Providing and laying Ceramic glazed floor tiles of size 300x300 mm (thickness to be specified by the manufacturer) of 1st quality conforming to IS : 15622 of approved make in colours such as White, Ivory, Grey, Fume Red Brown, laid on 20 mm thick cement mortar 1:4 (1 Cement : 4 Coarse sand), including pointing the joints with white cement and matching pigment etc, complete.	sqm	40.00	XXXXXX	XXXXXX
27	Providing and fixing Ist quality ceramic glazed wall tiles conforming to IS:15622 (thickness to be specified by the manufacturer), of approved make, in all colours, shades except burgundy, bottle green, black of any size as approved by Engineer-in-Charge, in skirting, risers of steps and dados, over 12 mm thick bed of cement mortar 1:3 (1 cement : 3 coarse sand) and jointing with grey cement slurry @ 3.3kg per sqm, including pointing in white cement mixed with pigment of matching shade complete.	sqm	180.00	XXXXXX	XXXXXX
28	Providing and laying vitrified floor tiles in different sizes (thickness to be specified by the manufacturer) with water absorption less than 0.08% and conforming to IS : 15622, of approved make, in all colours and shades, laid on 20mm thick cement mortar 1:4 (1 cement : 4 coarse sand), including grouting the joints with white cement and matching pigments etc., complete, size of Tile 600x600 mm	sqm	240.00	XXXXXX	XXXXXX
29	Fixing glazed/ Ceramic/ Vitrified floor tiles with cement based high polymer modified quick-set tile adhesive (Water based) conforming to IS: 15477, in average 3mm thickness.	sqm	280.00	XXXXXX	XXXXXX

30	Providing and fixing wash basin with C.I. brackets, 15 mm C.P. brass pillar taps, 32 mm C.P. brass waste of standard pattern, including painting of fittings and brackets, cutting and making good the walls wherever require, white Vitreous China Wash basin size 630x450 mm with a pair of 15 mm C.P. brass pillar taps.	each	6.00	XXXXXX	XXXXXX
31	Providing and fixing kitchen sink with C.I. brackets, C.P. brass chain with rubber plug, 40 mm C.P. brass waste complete, including painting the fittings and brackets, cutting and making good the walls wherever required, White glazed fire clay kitchen sink of size 600x450x 250 mm	each	4.00	XXXXXX	XXXXXX
32	Providing and fixing P.V.C. waste pipe for sink or wash basin including P.V.C. waste fittings complete. 32 mm dia.	each	9.00	XXXXXX	XXXXXX
33	Providing and fixing unplasticised P.V.C. connection pipe with PTMT Nuts, collar and bush of approved quality and colour, 15 mm nominal bore with 45 cm length.	each	27.00	XXXXXX	XXXXXX
34	Providing and fixing PTMT grating of approved quality and colour, Circular type 100 mm nominal dia.	each	16.00	XXXXXX	XXXXXX
35	Providing and fixing PTMT bib cock of approved quality and colour, 15mm nominal bore, 86 mm long, weighing not less than 88 gms.	each	5.00	XXXXXX	XXXXXX
36	Providing and fixing PTMT bib cock of approved quality and colour, 15 mm nominal bore, 165 mm long, weighing not less than 110 gms.	each	11.00	XXXXXX	XXXXXX
37	Providing and fixing PTMT swivelling shower, 15 mm nominal bore, weighing not less than 40 gms.	each	5.00	XXXXXX	XXXXXX
38	Providing and fixing PTMT soap Dish Holder having length of 138mm, breadth 102mm, height of 75mm with concealed fitting arrangements, weighing not less than 106 gms.	each	6.00	XXXXXX	XXXXXX
39	Providing and fixing PTMT towel rail complete with brackets fixed to wooden cleats with CP brass screws with concealed fittings arrangement of approved quality and colour, 600 mm long towel rail with total length of 645 mm, width 78 mm and effective height of 88 mm, weighing not less than 190 gms.	each	5.00	XXXXXX	XXXXXX
40	Providing and fixing 600x450 mm beveled edge mirror of superior glass (of approved quality) complete with 6 mm thick hard board ground fixed to wooden cleats with C.P. brass screws and washers complete.	each	6.00	XXXXXX	XXXXXX
41	Providing and fixing on wall face unplasticised Rigid PVC rain water pipes conforming to IS : 13592 Type A, including jointing with seal ring conforming to IS : 5382, leaving 10 mm gap for thermal expansion, (i) Single socketed pipes, 110 mm diameter	metre	110.00	XXXXXX	XXXXXX
42	Providing and fixing ISI marked flush door shutters conforming to IS : 2202 (Part I) non-decorative type, core of block board construction with frame of 1st class hard wood and well matched commercial 3 ply veneering with vertical grains or cross bands and face veneers on both faces of shutters, 35 mm thick including ISI marked Stainless Steel butt hinges with necessary screws.	sqm	52.00	XXXXXX	XXXXXX
43	Providing and fixing cup board shutters 25 mm thick, with Pre-laminated flat pressed three layer particle board or graded wood particle board IS: 12823 marked, exterior grade (Grade I Type II), having one side decorative lamination and other side balancing lamination, including IInd class teak wood lipping of 25 mm wide x12 mm thick with necessary screws and bright finished stainless steel piano hinges, complete as per direction of the Engineer-in-Charge	sqm	14.00	XXXXXX	XXXXXX
44	Providing wood work in frames of doors, windows, clerestory windows and other frames, wrought framed and fixed in position with hold fast lugs or with dash fasteners of required dia & length (hold fast lugs or dash fastener shall be paid for separately) ,Kiln seasoned and chemically treated hollock wood.	cum	0.21	XXXXXX	XXXXXX
45	Providing and fixing factory made P.V.C. door frame of size 50x47 mm with a wall thickness of 5 mm, made out of extruded 5mm rigid PVC foam sheet, mitred at corners and joined with 2 Nos of 150 mm long brackets of 15x15 mm M.S. square tube, the vertical door frame profiles to be reinforced with 19x19 mm M.S. square tube of 19 gauge, EPDM rubber gasket weather seal to be provided through out the frame. The door frame to be fixed to the wall using M.S. screws of 65/100 mm size, complete as per manufacturer's specification and direction of Engineerin-Charge.	metre	46.00	XXXXXX	XXXXXX

46	Providing and fixing factory made panel PVC door shutter consisting of frame made out of M.S. tubes of 19 gauge thickness and size of 19 mm x 19 mm for styles and 15x15 mm for top & bottom rails. M.S. frame shall have a coat of steel primers of approved make and manufacture. M.S. frame covered with 5 mm thick heat moulded PVC 'C' channel of size 30 mm thickness, 70 mm width out of which 50 mm shall be flat and 20 mm shall be tapered in 45 degree angle on both side forming styles and 5 mm thick, 95 mm wide PVC sheet out of which 75 mm shall be flat and 20 mm shall be tapered in 45 degree on the inner side to form top and bottom rail and 115 mm wide PVC sheet out of which 75 mm shall be flat and 20 mm shall be tapered on both sides to form lock rail. Top, bottom and lock rails shall be provided both side of the panel. 10 mm (5 mm x 2) thick, 20 mm wide cross PVC sheet be provided as gap insert for top rail & bottom rail, paneling of 5 mm thick both side PVC sheet to be fitted in the M.S. frame welded/ sealed to the styles & rails with 7 mm (5 mm+2 mm) thick x 15 mm wide PVC sheet beading on inner side, and joined together with solvent cement adhesive. An additional 5 mm thick PVC strip of 20 mm width is to be stuck on the interior side of the 'C' Channel using PVC solvent adhesive etc. complete as per direction of Engineer-in-charge, manufacturer's specification & drawing. 30 mm thick pre laminated PVC door shutters.	sqm	15.00	XXXXXX	XXXXXX
47	Providing and fixing aluminium work for doors, windows, ventilators and partitions with extruded built up standard tubular sections/ appropriate Z sections and other sections of approved make conforming to IS: 733 and IS: 1285, fixing with dash fasteners of required dia and size, including necessary filling up the gaps at junctions, i.e. at top, bottom and sides with required EPDM rubber/ neoprene gasket etc. Aluminium sections shall be smooth, rust free, straight, mitred and jointed mechanically wherever required including cleat angle, Aluminium snap beading for glazing / paneling, C.P. brass / stainless steel screws, all complete as per architectural drawings and the directions of Engineer-in-charge. (Glazing, paneling and dash fasteners to be paid for separately) : For fixed portion Anodised aluminium (anodised transparent or dyed to required shade according to IS: 1868, Minimum anodic coating of grade AC 15)	kg	190.00	XXXXXX	XXXXXX
48	Providing and fixing aluminium work for doors, windows, ventilators and partitions with extruded built up standard tubular sections/ appropriate Z sections and other sections of approved make conforming to IS: 733 and IS: 1285, fixing with dash fasteners of required dia and size, including necessary filling up the gaps at junctions, i.e. at top, bottom and sides with required EPDM rubber/ neoprene gasket etc. Aluminium sections shall be smooth, rust free, straight, mitred and jointed mechanically wherever required including cleat angle, Aluminium snap beading for glazing / paneling, C.P. brass / stainless steel screws, all complete as per architectural drawings and the directions of Engineer-in-charge. (Glazing, paneling and dash fasteners to be paid for separately) : For shutters of doors, windows & ventilators including providing and fixing hinges/ pivots and making provision for fixing of fittings wherever required including the cost of EPDM rubber / neoprene gasket required (Fittings shall be paid for separately) anodised aluminium (anodised transparent or dyed to required shade according to IS: 1868, Minimum anodic coating of grade AC 15)	kg	775.00	XXXXXX	XXXXXX
49	Providing and fixing glazing in aluminium door, window, ventilator shutters and partitions etc. with EPDM rubber / neoprene gasket etc. complete as per the architectural drawings and the directions of engineer-in-charge. (Cost of aluminium snap beading shall be paid in basic item): With float glass panes of 4.0 mm thickness	sqm	30.00	XXXXXX	XXXXXX
50	Providing and fixing fly proof galvanized M.S. wire gauge to windows and clerestory windows using wire gauge with average width of aperture 1.4 mm in both directions with wire of dia 0.63 mm all complete, with 12 mm mild steel U beading.	sqm	34.00	XXXXXX	XXXXXX
51	Providing and fixing aluminium sliding door bolts, ISI marked anodised anodic coating not less than grade AC 10 as per IS : 1868), transparent or dyed to required colour or shade, with nuts and screws etc. complete, 250x16 mm.	each	37.00	XXXXXX	XXXXXX

52	Providing and fixing aluminium tower bolts, ISI marked, anodised (anodic coating not less than grade AC 10 as per IS : 1868) transparent or dyed to required colour or shade, with necessary screws etc. complete, 200x10 mm.	each	76.00	XXXXXX	XXXXXX
53	Providing and fixing aluminium tower bolts, ISI marked, anodised (anodic coating not less than grade AC 10 as per IS : 1868) transparent or dyed to required colour or shade, with necessary screws etc. complete, 150x10 mm.	each	128.00	XXXXXX	XXXXXX
54	Providing and fixing aluminium tower bolts, ISI marked, anodised (anodic coating not less than grade AC 10 as per IS : 1868) transparent or dyed to required colour or shade, with necessary screws etc. complete, 100x10 mm.	each	48.00	XXXXXX	XXXXXX
55	Providing and fixing aluminium handles, ISI marked, anodised (anodic coating not less than grade AC 10 as per IS : 1868) transparent or dyed to required colour or shade, with necessary screws etc. complete, 125 mm.	each	80.00	XXXXXX	XXXXXX
56	Providing and fixing aluminium handles, ISI marked, anodised (anodic coating not less than grade AC 10 as per IS : 1868) transparent or dyed to required colour or shade, with necessary screws etc. complete, 100 mm.	each	104.00	XXXXXX	XXXXXX
57	Providing and fixing aluminium casement stays, ISI marked, anodised (anodic coating not less than grade AC 10 as per IS : 1868) transparent or dyed to required colour and shade, with necessary screws etc. complete.	each	30.00	XXXXXX	XXXXXX
58	Providing and fixing bright finished brass 100 mm mortice latch and lock with 6 levers and a pair of lever handles of approved quality with necessary screws etc. complete.	each	4.00	XXXXXX	XXXXXX
59	Providing and fixing magnetic catcher of approved quality in cupboard / ward robe shutters, including fixing with necessary screws etc. complete, Double strip (horizontal type).	each	48.00	XXXXXX	XXXXXX
60	Providing and fixing 50 mm bright finished brass cup board or wardrobe knob of approved quality with necessary screws.	each	24.00	XXXXXX	XXXXXX
61	Providing and fixing M.S. grills of required pattern in frames of windows etc. with M.S. flats, square or round bars etc. including priming coat with approved steel primer all complete. Fixed to openings /wooden frames with rawl plugs screws etc.	kg	1276.00	XXXXXX	XXXXXX
62	Repairs to plaster of thickness 12 mm to 20 mm in patches of area 2.5 sq. meters and under, including cutting the patch in proper shape, raking out joints and preparing and plastering the surface of the walls complete, including disposal of rubbish to the dumping ground within 50 metres lead . With cement mortar 1:4 (1cement: 4 coarse sand)	Sqm	115.00	XXXXXX	XXXXXX
63	Removing dry or oil bound distemper, water proofing cement paint and the like by scrapping, sand papering and preparing the surface smooth including necessary repairs to scratches etc. complete.	sqm	1275.00	XXXXXX	XXXXXX
64	Providing and applying white cement based putty of average thickness 1 mm, of approved brand and manufacturer, over the plastered wall surface to prepare the surface even and smooth complete.	sqm	1275.00	XXXXXX	XXXXXX
65	Distemping with oil bound washable distemper of approved brand and manufacture- ure to give an even shade. New work (two or more coats) over and including water tinnable priming coat with cement primer.	sqm	1275.00	XXXXXX	XXXXXX
66	Painting with synthetic enamel paint of approved brand and manufacture of required colour to give an even shade, two or more coats on new work.	sqm	216.00	XXXXXX	XXXXXX
67	Carriage of material by mechanical transport including loading, unloading and stacking Lime, moorum, building rubbish upto 5 Km.	cum	20.00	XXXXXX	XXXXXX
68	Wiring for light point/ fan point/ exhaust fan point/ call bell point with 1.5 sq.mm FRLS PVC insulated copper conductor single core cable in surface / recessed medium class PVC conduit, with modular switch, modular plate, suitable GI box and earthing the point with 1.5 sq.mm. FRLS PVC insulated copper conductor single core cable etc. as required.. For Group A	Points.	160	XXXXXX	XXXXXX
69	Wiring for twin control light point with 1.5 sq.mm FRLS PVC insulated copper conductor single core cable in surface / recessed medium class PVC conduit, 2 way modular switch, modular plate, suitable GI box and earthing the point with 1.5 sq.mm. FRLS	Points.	20	XXXXXX	XXXXXX

	PVCInsulated copper conductor single core cable etc. as required.				
70	Circuit/Sub-main wiring in PVC conduit: Wiring for circuit/submain wiring alongwith earth wire with 2X4 sq. mm+ 1X4sq. mm earth wire of PVC insulated copper conductor, single core cable in surface/recessed PVC conduit as required.	Metre	1500	XXXXXX	XXXXXX
71	Circuit/Sub-main wiring in PVC conduit: Wiring for circuit/submain wiring alongwith earth wire with 2X2.5 sq. mm+ 1X2.5sq. mm earth wire of PVC insulated copper conductor, single core cable in surface/recessed PVC conduit as required.	Metre	550	XXXXXX	XXXXXX
72	Circuit/Sub-main wiring in PVC conduit: Wiring for circuit/submain wiring alongwith earth wire with 4 X 10 sq. mm + 2 X 10 sq. mm earth wire of PVC insulated copper conductor, single core cable in surface/recessed PVC conduit as required.	Metre	15	XXXXXX	XXXXXX
73	Circuit/Sub-main wiring in PVC conduit: Wiring for circuit/submain wiring alongwith earth wire with 2X6 sq. mm+ 1X6sq. mm earth wire of PVC insulated copper conductor, single core cable in surface/recessed PVC conduit as required.	Metre	50	XXXXXX	XXXXXX
74	Supplying and drawing 2 pair 0.5 mm dia FRLS PVC insulated annealed copper conductor, unarmored telephone cable in the existing surface/ recessed steel/ PVC conduit as required.	Metre	350	XXXXXX	XXXXXX
75	Supplying and drawing co-axial TV cable RG-6 grade, 0.7 mm solid copper conductor PE insulated, shielded with fine tinned copper braid and protected with PVC sheath in the existing surface/ recessed steel/ PVC conduit as required.	Metre	350	XXXXXX	XXXXXX
76	Supplying and fixing 2 modules, GI box alongwith modular base & cover plate for modular switches in recess etc as required.	Nos	60	XXXXXX	XXXXXX
77	Supplying and fixing Telephone socket outlet on the existing modular plate & switch box including connections but excluding modular plate etc. as required.	Nos	40	XXXXXX	XXXXXX
78	Supplying and fixing TV antenna socket outlet on the existing modular plate & switch box including connections but excluding modular plate etc. as required.	Nos	40	XXXXXX	XXXXXX
79	Supplying and fixing of 25 mm of medium class PVC conduit along with accessories in surface/recess including cutting the wall and making good the same in case of recessed conduit as required.	Metre	350	XXXXXX	XXXXXX
80	Supplying and fixing 2 + 4 way / 6 way, Double door, single pole and neutral, sheetsteel, MCB distribution board, 240 volts, on surface/ recess,complete with tinned copper bus bar, neutral bus bar, earth bar,din bar, interconnections, powder painted including earthing etc.as required. (But without MCB/RCCB/Isolator)	Nos	1	XXXXXX	XXXXXX
81	Supplying and fixing 2 + 12 way / 14 way, Double door, single pole and neutral, sheetsteel, MCB distribution board, 240 volts, on surface/ recess,complete with tinned copper bus bar, neutral bus bar, earth bar,din bar, interconnections, powder painted including earthing etc.as required. (But without MCB/RCCB/Isolator)	Nos	3	XXXXXX	XXXXXX
82	Supplying and fixing of 8 way (4 + 24), Double door surface/ recess mounting,vertical type, 415 volts, TPN MCB distribution board of sheet steel, dust protected, duly powder painted, inclusive of 200 amps tinned copper bus bar, common neutral link, earth bar, din bar for mounting MCB's (but without MCB's and incomer) as required.	Nos	1	XXXXXX	XXXXXX
83	Supplying and fixing 5 amps to 32 amps rating, 240/415 volts, "C"curve, miniature circuit breaker suitable for inductive load Single poles in the existing MCB DB complete with connections,testing and commissioning etc. as required.	Nos	55	XXXXXX	XXXXXX
84	Supplying and fixing 5 amps to 32 amps rating, 240/415 volts, "C" curve, miniature circuit breaker suitable for inductive load of Double poles in the existing MCB DB complete with connections, testing and commissioning etc. as required.	Nos	3	XXXXXX	XXXXXX
85	Supplying and fixing 5 amps to 32 amps rating, 240/415 volts, "C" curve, miniature circuit breaker suitable for inductive load of Triple pole and neutral in the existing MCB DB complete with connections, testing and commissioning etc. as required.	Nos	1	XXXXXX	XXXXXX
86	Supplying and fixing suitable size GI box with modular plate andcover in front on surface or in recess, including providing and fixing3 pin 5/6 amps modular socket outlet and 5/6 amps modular switch,connection etc. as required.	Nos	120	XXXXXX	XXXXXX
87	Supplying and fixing suitable size GI box with modular plate	Nos	60	XXXXXX	XXXXXX

	andcover in front on surface or in recess, including providing and fixing 6 pin 5/6 & 15/16 amps modular socket outlet and 15/16 amps modular switch, connection etc. as required.				
88	Supplying and fixing Ding-Dong call bell suitable for single phase, 230 volts, complete as required.	Nos	4	XXXXXX	XXXXXX
89	Supplying and fixing stepped type electronic fan regulator on the existing modular plate switch box including connections but excluding modular plate etc. as required.	Nos	14	XXXXXX	XXXXXX
90	Erection of wall bracket /ceiling fittings of all sizes and shapes containing upto two GLS lamps per fitting, complete with all accessories including connection etc. as required.		35	XXXXXX	XXXXXX
91	Installation, testing and commissioning of pre-wired, fluorescent fitting / compact fluorescent fitting/LED fittings of all types, complete with all accessories and tube etc. directly on ceiling/ wall, including connection with 1.5 sq. mm FRLS PVC insulated, copper conductor, single core cable and earthing etc. as required.	Nos	50	XXXXXX	XXXXXX
92	Installation, testing and commissioning of ceiling fan, including wiring the down rods of standard length (upto 30 cm) with 1.5 sq. mm FRLS PVC insulated, copper conductor, single core cable etc. as required.	Nos	14	XXXXXX	XXXXXX
93	Supplying and fixing modular blanking plate on the existing modular plate & switch box excluding modular plate as required.	Nos	50	XXXXXX	XXXXXX
94	Supplying and fixing single pole blanking plate in the existing MCB DB complete etc. as required.	Nos	25	XXXXXX	XXXXXX
95	Earthing with G.I. earth pipe 4.5 metre long, 40 mm dia including accessories, and providing masonry enclosure with cover plate having locking arrangement and watering pipe etc. with charcoal/ coke and salt as required.	Nos	2	XXXXXX	XXXXXX
96	Supplying and fixing of 8 way (4 + 24), Double door surface/ recess mounting, vertical type, 415 volts, TPN MCB distribution board of sheet steel, dust protected, duly powder painted, inclusive of 200 amps tinned copper bus bar, common neutral link, earth bar, din bar for mounting MCB's (but without MCB's and incomer) as required.	Nos	1	XXXXXX	XXXXXX
97	Supplying and fixing 5 amps to 32 amps rating, 240/415 volts, "C" curve, miniature circuit breaker suitable for inductive load Single poles in the existing MCB DB complete with connections, testing and commissioning etc. as required.	Nos	55	XXXXXX	XXXXXX
98	Supplying and laying 25 mm X 5 mm G.I strip at 0.50 metre below ground as strip earth electrode, including connection/ terminating with G.I. nut, bolt, spring, washer etc. as required. (Jointing shall be done by overlapping and with 2 sets of G.I. nut bolt & spring washer spaced at 50mm)	Metre	40	XXXXXX	XXXXXX
99	Installation of exhaust fan Upto 450 mm sweep in the existing opening, including making good the damage, connection, testing, commissioning etc. as required.	Nos	5	XXXXXX	XXXXXX
100	Supplying of LED Tube light, 18W, 230V AC. Complete set (Havells model-Endura /Philips/Syska make)	Nos	24	XXXXXX	XXXXXX
101	Supplying of LED Tube light, 8/10W, 230V AC. Complete set (Havells model- Endura /Philips/Syska make)	Nos	24	XXXXXX	XXXXXX
102	Supplying of Decorative wall mounting SS finish fixture with opal glass diffuser (Havells model-Aristo or equivalent of make Philips/Syska)	Nos	20	XXXXXX	XXXXXX
103	Supplying of Surface decorative ceiling mounted LED fixture with electronic driver suitable for indoor applications. (Havells model-CROWNLED 12W or equivalent of make Philips/Syska)	Nos	5	XXXXXX	XXXXXX
104	Supplying of Decorative wall light fixture made up of Polycarbonate (Havells model-CITY1-15W or equivalent of make Philips/Syska)	Nos	7	XXXXXX	XXXXXX
105	Supplying of 250mm Sweep Domestic Exhaust Fan. Plastic body (Havells model-Ventil Air DX/Khaitan/Bajaj make)	Nos	5	XXXXXX	XXXXXX
96				Total	XXXXXX
107 (a)	In case, as per the current status the party (service provider) is an Individual, HUF, or partnership firm including AOP	Service Tax (on.....% of total amount of SI No. 106) to be payable by party (.....%) (Rs)			XXXXXX
107 (b)		Service Tax (on.....% of total amount of SI No.106) to be payable by BHEL (.....%) (Rs)			XXXXXX

108	In case, as per the current status the party is a Private or Public limited Company	Service Tax (on.....% of total amount of SI No. 106) to be payable by party (.....%) (Rs)	XXXXXX
109 (a)	Total Amount inclusive of Service Tax	In case of Individual, HUF, or partnership firm including AOP (Total of 106+107a+107b) (Rs)	XXXXXX
109 (b)		In case of Private or Public limited Company (Total of 106+108) (Rs)	XXXXXX
Total Offer Value in Words : Rupees XXXXXX XXXXXX XXXXXX XXXXXX XXXXXX			

(Signature & seal of the contractor)

DECLARATION

I / We, do hereby declare that there is no case with the Police/Court/Regulatory authorities against the proprietor/firm/partner. Also I/We have not been suspended / delisted / blacklisted by any other Govt. Ministry / Department/Public Sector Undertaking/ Autonomous Body/Financial institution/Court. We also certify that either our firm or any of the partners are not involved in any scam or disciplinary proceedings settled or pending adjudication

(Signature & seal of the contractor)

Place:

Date:

ESTATE OFFICE: BHEL TOWNSHIP: NOIDA

NIT No. : 01: AA: NOI: ADMN: Renovation-BHPV: 112: 2016-17

Dated: 07.04.2016

No Deviation Certificate

Notwithstanding anything mentioned in our bid, we hereby accept all the terms and conditions of the above tender and there is no deviation in the terms & conditions of tender. We confirm that the offer submitted by us is confirming to all the terms and conditions mentioned in the tender document. We hereby undertake and confirm that we have understood the scope of services properly and shall carry out the job as mentioned in this tender.

(Signature & seal of the contractor)

TECHNICAL DETAILS

	Rs. Lacs		
TURNOVER (F.Y.)	2012-13	2013-14	2014-15

EXPERIENCE	No. of Work	Value	Customer's Name

SIMILAR WORKS	Nature of Works	No. of works	Value	Customer's Name

EPF Registration number	
ESI Registration number	
PAN Card No.	
Service Tax No.	
TIN No.	

Income Tax Return (F.Y.)	2012-13	2013-14	2014-15
EMD Details	DD/ PO No.	Date	Amount
Details of manpower			

(Signature & seal of the contractor)

BIDDER'S DETAILS

Name of the Contractor /Party/ Firm	
Name of Representative	
Postal Address	
Phone/ Landline Nos.	
Mobile Nos.	
Fax No.	
E-Mail Address	
Web Site Address (If Any)	
Bank details for payment through NEFT/RTGS and for release of EMD*	Name of Bank: Branch: Account No.: IFSC No.: MICR No.:

Note: Submit a canceled cheque for verification of above bank details.

(Signature & seal of the contractor)

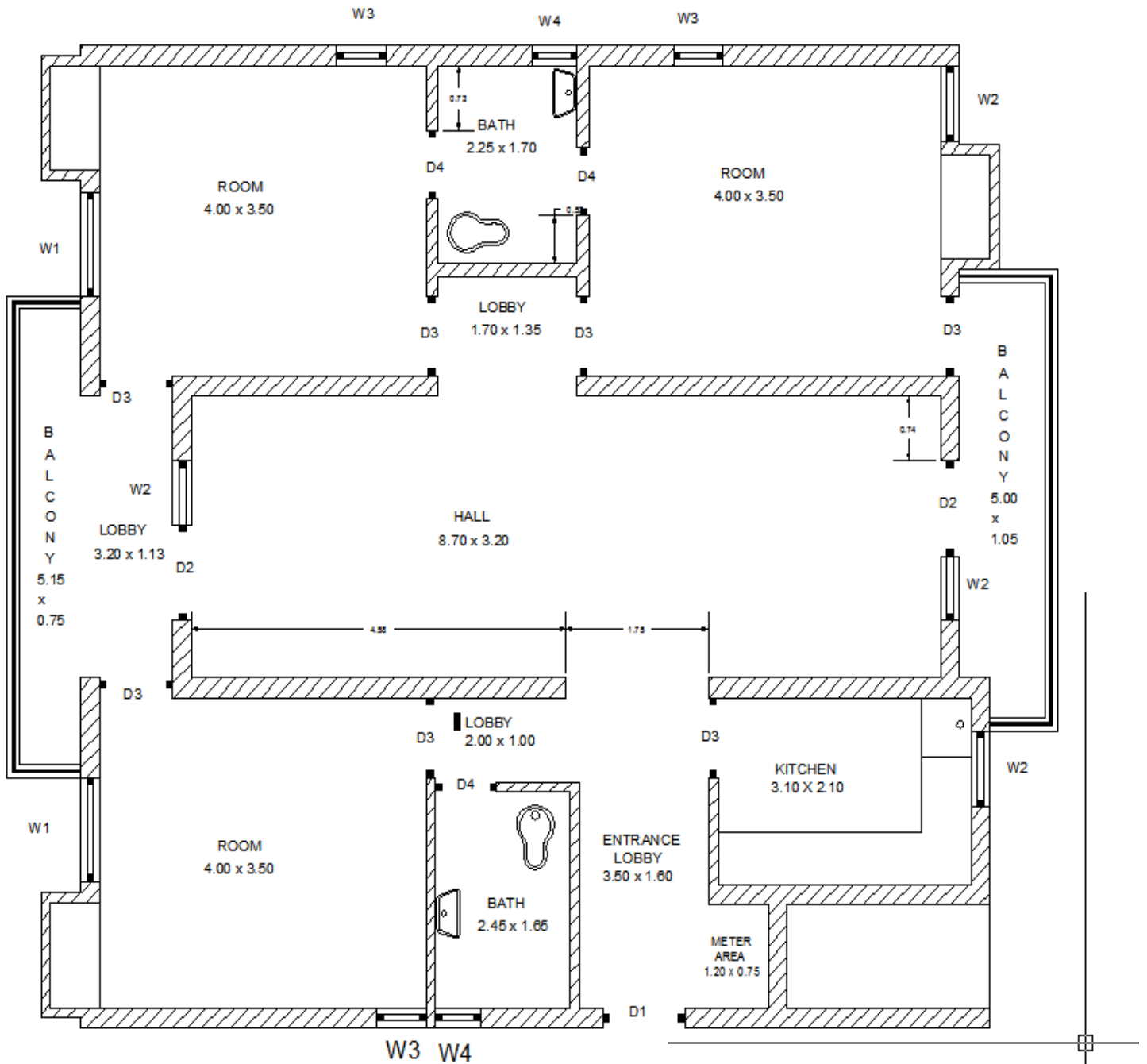
**CHECK-LIST (TECHNICAL BID)
SUMMARY OF COMPLIANCE TO REQUIREMENT OF TENDER**

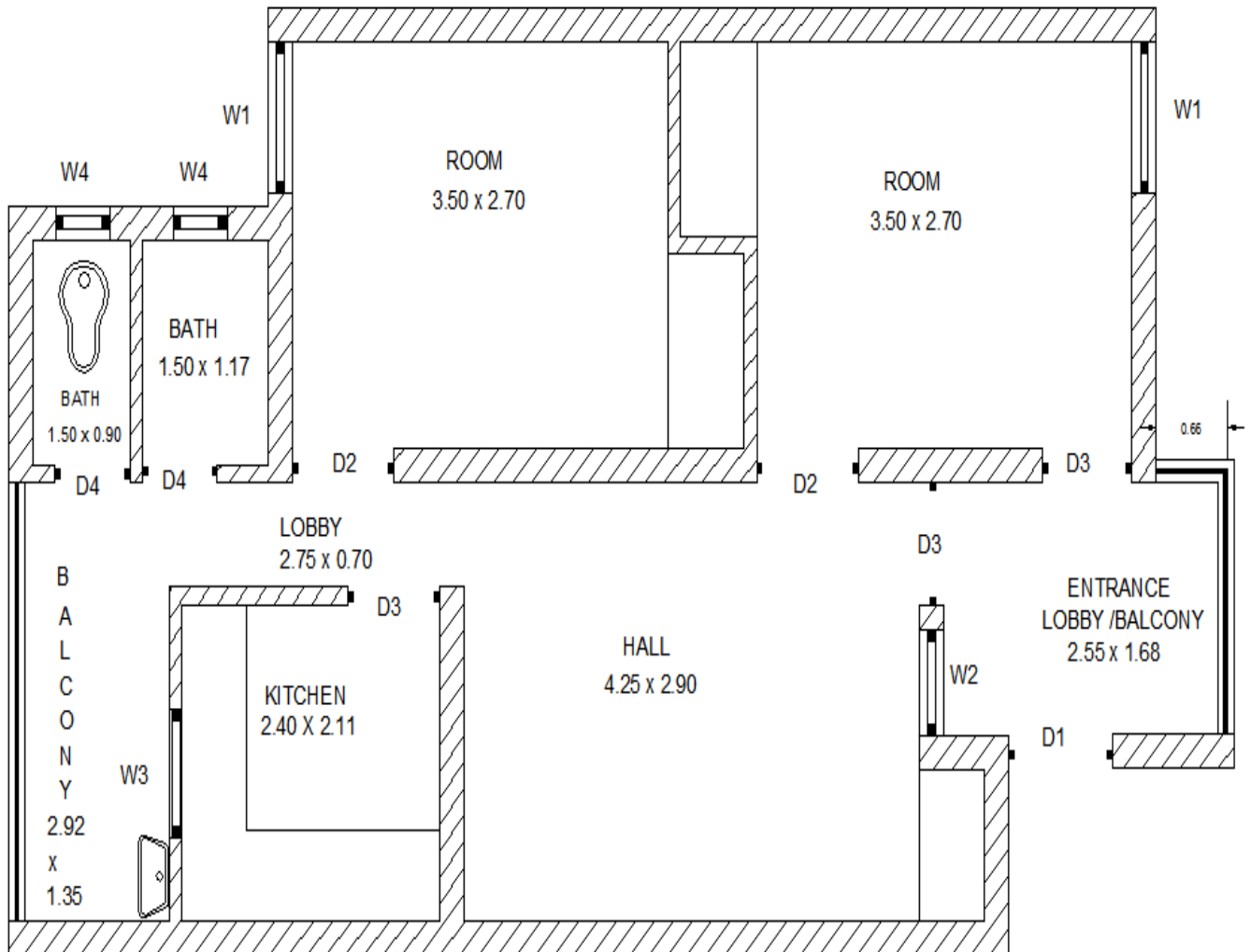
Sl. No.	Description of requirement	Yes/ No/NA	Page No.
1	EMD of Rs. 1,00,000/- in the form of Pay order or Demand Draft in favour of “Bharat Heavy Electricals Ltd” in a separate envelope.		
2	Details of work experience, satisfactory work performance certificates.		
3	Copies of the Balance sheet and Profit & Loss account statement of last three financial years i.e. FY 2012-13, 2013-14 & 2014-2015 (AY 2013-14, 2014-15 & 2015-16) duly verified by CA		
4	Acknowledgement of IT returns (ITR) of last three financial years i.e. FY 2012-13, 2013-14 & 2014-2015 (AY 2013-14, 2014-15 & 2015-16)		
5	Copy of the PAN card.		
6	Copy of TIN No. registration certificate		
7	Copy of Service Tax registration certificate		
8	Copy of EPF Registration and details		
9	Copy of ESI Registration and details		
10	Declaration enclosed at Annexure – E2		
11	No deviation certificate enclosed at Annexure – E3		
12	Technical details as per Annexure-E4		
13	Bidder’s detail as per Annexure- E5		
14	All the pages of tender document have been signed		
15	Sealed envelope of price bid submitted.		

(Signature & seal of the contractor)

TYPICAL DRAWINGS

NILGIRI APARTMENTS – ONE FLAT



TYPICAL DRAWINGS**DHAWALGIRI APARTMENTS – THREE FLATS**

PRICE BID-(PART –B)

Name of Work : Renovation of BHPV Flats (4 Nos.) at Nilgiri & Dawalgiri Apartments in Sector-34, Noida.

**NIT No. : 01: AA: NOI: ADMN: Renovation-BHPV: 112: 2016-17
Dated: 07.04.2016**

S. N.	Description of Item	Unit	Qty	Rate	Amount
1	Demolishing cement concrete manually/ by mechanical means including disposal of material within 50 metres lead as per direction of Engineer - in - charge Nominal concrete 1:3:6 or richer mix (i/c equivalent design mix)	cum	2.57		
2	Dismantling tile work in floors and roofs laid in cement mortar including stacking material within 50 metres lead For thickness of tiles 10 mm to 25 mm	sqm	55.00		
3	Dismantling doors, windows and clerestory windows (steel or wood) shutter including chowkhats, architrave, holdfasts etc. complete and stacking within 50 metres lead of area 3 sq. metres and below	each	73.00		
4	Dismantling old plaster or skirting raking out joints and cleaning the surface for plaster including disposal of rubbish to the dumping ground within 50 metres lead.	sqm	115.00		
5	Dismantling G.I. pipes (external work) including excavation and refilling trenches after taking out the pipes, manually/ by mechanical means including stacking of pipes within 50 metres lead as per direction of Engineer-in-charge 15 mm to 40 mm nominal bore	metre	140.00		
6	Dismantling C.I. pipes including excavation and refilling trenches after taking out the pipes, manually/ by mechanical means breaking lead caulked joints, melting of lead and making into blocks including stacking of pipes & lead at site within 50 metre lead as per direction of Engineer-in-charge Up to 150 mm diameter	metre	140.00		
7	Cutting holes up to 30x30 cm in walls including making good the same With common burnt clay F.P.S. (non modular) bricks	each	14.00		
8	Providing and fixing soil, waste and vent pipes 100 mm dia centrifugally cast (spun) iron socket & spigot (S&S) pipe as per IS: 3989	metre	120.00		
9	Providing and fixing trap of self cleansing design with screwed down or hinged grating with or without vent arm complete, including cost of cutting and making good the walls and floors 100 mm inlet and 100 mm outlet sand cast iron S&S as per IS: 3989 each	each	6.00		
10	Providing and filling the joints with spun yarn, cement slurry and cement mortar 1:2 (1 cement : 2 fine sand) in S.C.I./ C.I. Pipes 100 mm dia pipe.	each	24.00		
11	Providing and fixing M.S. holder-bat clamps of approved design to Sand Cast iron/cast iron (spun) pipe embedded in and including cement concrete blocks 10x10x10 cm of 1:2:4 mix (1 cement : 2 coarse sand : 4 graded stone aggregate 20 mm nominal size), including cost of cutting holes and making good the walls etc. for 100 mm dia pipe.	each	20.00		
12	Providing and fixing bend of required degree with access door, insertion rubber washer 3 mm thick, bolts and nuts complete,100 mm dia Sand cast iron S&S as per IS - 3989.	each	8.00		
13	Providing and fixing plain bend of required degree 100 mm dia Sand cast iron S&S as per IS : 3989.	each	8.00		
14	Providing and fixing single equal plain junction of required degree with access door, insertion rubber washer 3 mm thick, bolts and nuts complete 100x100x100 mm Sand cast iron S&S as per IS - 3989.	each	8.00		
15	Providing and fixing single equal plain junction of required degree 100x100x100 mm Sand cast iron S&S as per IS - 3989.	each	8.00		

16	Providing lead caulked joints to sand cast iron/centrifugally cast (spun) iron pipes and fittings of diameter 100 mm.	each	8.00		
17	Providing and fixing terminal guard 100 mm Sand cast iron S&S as per IS - 3989.	each	8.00		
18	Providing and fixing Chlorinated Polyvinyl Chloride (CPVC) pipes, having thermal stability for hot & cold water supply, including all CPVC plain & brass threaded fittings, i/c fixing the pipe with clamps at 1.00 m spacing. This includes jointing of pipes & fittings with one step CPVC solvent cement and the cost of cutting chases and making good the same including testing of joints complete as per direction of Engineer in Charge. Concealed work, including cutting chases and making good the walls etc. 20 mm nominal outer dia Pipes.	mtr.	130.00		
19	Providing and fixing Chlorinated Polyvinyl Chloride (CPVC) pipes, having thermal stability for hot & cold water supply, including all CPVC plain & brass threaded fittings, including fixing the pipe with clamps at 1.00 m spacing. This includes jointing of pipes & fittings with one step CPVC solvent cement and testing of joints complete as per direction of Engineer in Charge. Internal work - Exposed on wall 20 mm nominal outer dia Pipes.	mtr.	20.00		
20	Providing and fixing Chlorinated Polyvinyl Chloride (CPVC) pipes, having thermal stability for hot & cold water supply including all CPVC plain & brass threaded fittings This includes jointing of pipes & fittings with one step CPVC solvent cement ,trenching ,refilling & testing of joints complete as per direction of Engineer in Charge. External work-20 mm nominal outer dia Pipes	mtr.	30.00		
21	Providing and fixing C.P. brass stop cock (concealed) of standard design and of approved make conforming to IS:8931, 15 mm nominal bore.	each	10.00		
22	Providing and fixing PTMT angle stop cock 15mm nominal bore,weighing not less than 85gms.	each	28.00		
23	Providing and laying in position cement concrete of specified grade excluding the cost of centering and shuttering - All work up to plinth level 1:2:4 (1 cement : 2 coarse sand : 4 graded stone aggregate 20 mm nominal size)	cum	2.50		
24	Providing and fixing water closet squatting pan (Indian type W.C. pan) with 100 mm sand cast Iron P or S trap, 10 litre low level white P.V.C. flushing cistern, including flush pipe, with manually controlled device (handle lever) conforming to IS : 7231, with all fittings and fixtures complete, including cutting and making good the walls and floors wherever required. White Vitreous china Orissa pattern W.C. pan of size 580x440 mm with integral type foot rests.	each	4.00		
25	Providing and fixing white vitreous china pedestal type water closet (European type) with seat and lid, 10 litre low level white vitreous china flushing cistern & C.P. flush bend with fittings & C.I.brackets, 40 mm flush bend, overflow arrangement with specials of standard make and mosquito proof coupling of approved municipal design complete, including painting of fittings and brackets, cutting and making good the walls and floors wherever required, W.C. pan with ISI marked white solid plastic seat and lid.	each	1.00		
26	Providing and laying Ceramic glazed floor tiles of size 300x300 mm (thickness to be specified by the manufacturer) of 1st quality conforming to IS : 15622 of approved make in colours such as White, Ivory, Grey, Fume Red Brown, laid on 20 mm thick cement mortar 1:4 (1 Cement : 4 Coarse sand), including pointing the joints with white cement and matching pigment etc, complete.	sqm	40.00		
27	Providing and fixing Ist quality ceramic glazed wall tiles conforming to IS:15622 (thickness to be specified by the manufacturer), of approved make, in all colours, shades except burgundy, bottle green, black of any size as approved by Engineer-in-Charge, in skirting, risers of steps and dados, over 12 mm thick bed of cement mortar 1:3 (1 cement : 3 coarse sand) and jointing with grey cement slurry @ 3.3kg per sqm, including pointing in white cement mixed with pigment of matching shade complete.	sqm	180.00		

28	Providing and laying vitrified floor tiles in different sizes (thickness to be specified by the manufacturer) with water absorption less than 0.08% and conforming to IS : 15622, of approved make, in all colours and shades, laid on 20mm thick cement mortar 1:4 (1 cement : 4 coarse sand), including grouting the joints with white cement and matching pigments etc., complete, size of Tile 600x600 mm	sqm	240.00		
29	Fixing glazed/ Ceramic/ Vitrified floor tiles with cement based high polymer modified quick-set tile adhesive (Water based) conforming to IS: 15477, in average 3mm thickness.	sqm	280.00		
30	Providing and fixing wash basin with C.I. brackets, 15 mm C.P. brass pillar taps, 32 mm C.P. brass waste of standard pattern, including painting of fittings and brackets, cutting and making good the walls wherever require, white Vitreous China Wash basin size 630x450 mm with a pair of 15 mm C.P. brass pillar taps.	each	6.00		
31	Providing and fixing kitchen sink with C.I. brackets, C.P. brass chain with rubber plug, 40 mm C.P. brass waste complete, including painting the fittings and brackets, cutting and making good the walls wherever required, White glazed fire clay kitchen sink of size 600x450x 250 mm	each	4.00		
32	Providing and fixing P.V.C. waste pipe for sink or wash basin including P.V.C. waste fittings complete. 32 mm dia.	each	9.00		
33	Providing and fixing unplasticised P.V.C. connection pipe with PTMT Nuts, collar and bush of approved quality and colour, 15 mm nominal bore with 45 cm length.	each	27.00		
34	Providing and fixing PTMT grating of approved quality and colour, Circular type 100 mm nominal dia.	each	16.00		
35	Providing and fixing PTMT bib cock of approved quality and colour, 15mm nominal bore, 86 mm long, weighing not less than 88 gms.	each	5.00		
36	Providing and fixing PTMT bib cock of approved quality and colour, 15 mm nominal bore, 165 mm long, weighing not less than 110 gms.	each	11.00		
37	Providing and fixing PTMT swivelling shower, 15 mm nominal bore, weighing not less than 40 gms.	each	5.00		
38	Providing and fixing PTMT soap Dish Holder having length of 138mm, breadth 102mm, height of 75mm with concealed fitting arrangements, weighing not less than 106 gms.	each	6.00		
39	Providing and fixing PTMT towel rail complete with brackets fixed to wooden cleats with CP brass screws with concealed fittings arrangement of approved quality and colour, 600 mm long towel rail with total length of 645 mm, width 78 mm and effective height of 88 mm, weighing not less than 190 gms.	each	5.00		
40	Providing and fixing 600x450 mm beveled edge mirror of superior glass (of approved quality) complete with 6 mm thick hard board ground fixed to wooden cleats with C.P. brass screws and washers complete.	each	6.00		
41	Providing and fixing on wall face unplasticised Rigid PVC rain water pipes conforming to IS : 13592 Type A, including jointing with seal ring conforming to IS : 5382, leaving 10 mm gap for thermal expansion, (i) Single socketed pipes, 110 mm diameter	metre	110.00		
42	Providing and fixing ISI marked flush door shutters conforming to IS : 2202 (Part I) non-decorative type, core of block board construction with frame of 1st class hard wood and well matched commercial 3 ply veneering with vertical grains or cross bands and face veneers on both faces of shutters, 35 mm thick including ISI marked Stainless Steel butt hinges with necessary screws.	sqm	52.00		
43	Providing and fixing cup board shutters 25 mm thick, with Pre-laminated flat pressed three layer particle board or graded wood particle board IS: 12823 marked, exterior grade (Grade 1 Type II), having one side decorative lamination and other side balancing lamination, including IInd class teak wood lipping of 25 mm wide x12 mm thick with necessary screws and bright finished stainless steel piano hinges, complete as per direction of the Engineer-in-Charge	sqm	14.00		
44	Providing wood work in frames of doors, windows, clerestory windows and other frames, wrought framed and fixed in position with hold fast lugs or with dash fasteners of required dia & length (hold fast lugs or dash fastener shall be paid for separately) ,Kiln seasoned and chemically treated hollock wood.	cum	0.21		

45	Providing and fixing factory made P.V.C. door frame of size 50x47 mm with a wall thickness of 5 mm, made out of extruded 5mm rigid PVC foam sheet, mitred at corners and joined with 2 Nos of 150 mm long brackets of 15x15 mm M.S. square tube, the vertical door frame profiles to be reinforced with 19x19 mm M.S. square tube of 19 gauge, EPDM rubber gasket weather seal to be provided through out the frame. The door frame to be fixed to the wall using M.S. screws of 65/100 mm size, complete as per manufacturer's specification and direction of Engineer-in-Charge.	metre	46.00		
46	Providing and fixing factory made panel PVC door shutter consisting of frame made out of M.S. tubes of 19 gauge thickness and size of 19 mm x 19 mm for styles and 15x15 mm for top & bottom rails. M.S. frame shall have a coat of steel primers of approved make and manufacture. M.S. frame covered with 5 mm thick heat moulded PVC 'C' channel of size 30 mm thickness, 70 mm width out of which 50 mm shall be flat and 20 mm shall be tapered in 45 degree angle on both side forming styles and 5 mm thick, 95 mm wide PVC sheet out of which 75 mm shall be flat and 20 mm shall be tapered in 45 degree on the inner side to form top and bottom rail and 115 mm wide PVC sheet out of which 75 mm shall be flat and 20 mm shall be tapered on both sides to form lock rail. Top, bottom and lock rails shall be provided both side of the panel. 10 mm (5 mm x 2) thick, 20 mm wide cross PVC sheet be provided as gap insert for top rail & bottom rail, paneling of 5 mm thick both side PVC sheet to be fitted in the M.S. frame welded/ sealed to the styles & rails with 7 mm (5 mm+2 mm) thick x 15 mm wide PVC sheet beading on inner side, and joined together with solvent cement adhesive. An additional 5 mm thick PVC strip of 20 mm width is to be stuck on the interior side of the 'C' Channel using PVC solvent adhesive etc. complete as per direction of Engineer-in-charge, manufacturer's specification & drawing. 30 mm thick pre laminated PVC door shutters.	sqm	15.00		
47	Providing and fixing aluminium work for doors, windows, ventilators and partitions with extruded built up standard tubular sections/ appropriate Z sections and other sections of approved make conforming to IS: 733 and IS: 1285, fixing with dash fasteners of required dia and size, including necessary filling up the gaps at junctions, i.e. at top, bottom and sides with required EPDM rubber/ neoprene gasket etc. Aluminium sections shall be smooth, rust free, straight, mitred and jointed echanically wherever required including cleat angle, Aluminium snap beading for glazing / paneling, C.P. brass / stainless steel screws, all complete as per architectural drawings and the directions of Engineer-in-charge. (Glazing, paneling and dash fasteners to be paid for separately) : For fixed portion Anodised aluminium (anodised transparent or dyed to required shade according to IS: 1868, Minimum anodic coating of grade AC 15)	kg	190.00		
48	Providing and fixing aluminium work for doors, windows, ventilators and partitions with extruded built up standard tubular sections/ appropriate Z sections and other sections of approved make conforming to IS: 733 and IS: 1285, fixing with dash fasteners of required dia and size, including necessary filling up the gaps at junctions, i.e. at top, bottom and sides with required EPDM rubber/ neoprene gasket etc. Aluminium sections shall be smooth, rust free, straight, mitred and jointed mechanically wherever required including cleat angle, Aluminium snap beading for glazing / paneling, C.P. brass / stainless steel screws, all complete as per architectural drawings and the directions of Engineer-in-charge. (Glazing, paneling and dash fasteners to be paid for separately) : For shutters of doors, windows & ventilators including providing and fixing hinges/ pivots and making provision for fixing of fittings wherever required including the cost of EPDM rubber / neoprene gasket required (Fittings shall be paid for separately) anodised aluminium (anodised transparent or dyed to required shade according to IS: 1868, Minimum anodic coating of grade AC 15)	kg	775.00		
49	Providing and fixing glazing in aluminium door, window, ventilator shutters and partitions etc. with EPDM rubber / neoprene gasket etc. complete as per the architectural drawings and the directions of engineer-in-charge. (Cost of aluminium snap beading shall be paid in	sqm	30.00		

	basic item): With float glass panes of 4.0 mm thickness				
50	Providing and fixing fly proof galvanized M.S. wire gauge to windows and clerestory windows using wire gauge with average width of aperture 1.4 mm in both directions with wire of dia 0.63 mm all complete, with 12 mm mild steel U beading.	sqm	34.00		
51	Providing and fixing aluminium sliding door bolts, ISI marked anodised anodic coating not less than grade AC 10 as per IS : 1868), transparent or dyed to required colour or shade, with nuts and screws etc. complete, 250x16 mm.	each	37.00		
52	Providing and fixing aluminium tower bolts, ISI marked, anodised (anodic coating not less than grade AC 10 as per IS : 1868) transparent or dyed to required colour or shade, with necessary screws etc. complete, 200x10 mm.	each	76.00		
53	Providing and fixing aluminium tower bolts, ISI marked, anodised (anodic coating not less than grade AC 10 as per IS : 1868) transparent or dyed to required colour or shade, with necessary screws etc. complete, 150x10 mm.	each	128.00		
54	Providing and fixing aluminium tower bolts, ISI marked, anodised (anodic coating not less than grade AC 10 as per IS : 1868) transparent or dyed to required colour or shade, with necessary screws etc. complete, 100x10 mm.	each	48.00		
55	Providing and fixing aluminium handles, ISI marked, anodised (anodic coating not less than grade AC 10 as per IS : 1868) transparent or dyed to required colour or shade, with necessary screws etc. complete, 125 mm.	each	80.00		
56	Providing and fixing aluminium handles, ISI marked, anodised (anodic coating not less than grade AC 10 as per IS : 1868) transparent or dyed to required colour or shade, with necessary screws etc. complete, 100 mm.	each	104.00		
57	Providing and fixing aluminium casement stays, ISI marked, anodised (anodic coating not less than grade AC 10 as per IS : 1868) transparent or dyed to required colour and shade, with necessary screws etc. complete.	each	30.00		
58	Providing and fixing bright finished brass 100 mm mortice latch and lock with 6 levers and a pair of lever handles of approved quality with necessary screws etc. complete.	each	4.00		
59	Providing and fixing magnetic catcher of approved quality in cupboard / ward robe shutters, including fixing with necessary screws etc. complete, Double strip (horizontal type).	each	48.00		
60	Providing and fixing 50 mm bright finished brass cup board or wardrobe knob of approved quality with necessary screws.	each	24.00		
61	Providing and fixing M.S. grills of required pattern in frames of windows etc. with M.S. flats, square or round bars etc. including priming coat with approved steel primer all complete. Fixed to openings /wooden frames with rawl plugs screws etc.	kg	1276.00		
62	Repairs to plaster of thickness 12 mm to 20 mm in patches of area 2.5 sq. meters and under, including cutting the patch in proper shape, raking out joints and preparing and plastering the surface of the walls complete, including disposal of rubbish to the dumping ground within 50 metres lead . With cement mortar 1:4 (1cement: 4 coarse sand)	Sqm	115.00		
63	Removing dry or oil bound distemper, water proofing cement paint and the like by scrapping, sand papering and preparing the surface smooth including necessary repairs to scratches etc. complete.	sqm	1275.00		
64	Providing and applying white cement based putty of average thickness 1 mm, of approved brand and manufacturer, over the plastered wall surface to prepare the surface even and smooth complete.	sqm	1275.00		
65	Distempering with oil bound washable distemper of approved brand and manufacture- ure to give an even shade. New work (two or more coats) over and including water tinnable priming coat with cement primer.	sqm	1275.00		
66	Painting with synthetic enamel paint of approved brand and manufacture of required colour to give an even shade, two or more coats on new work.	sqm	216.00		
67	Carriage of material by mechanical transport including loading, unloading and stacking Lime, moorum, building rubbish upto 5 Km.	cum	20.00		

68	Wiring for light point/ fan point/ exhaust fan point/ call bell point with 1.5 sq.mm FRLS PVC insulated copper conductor single core cable in surface / recessed medium class PVC conduit, with modular switch, modular plate, suitable GI box and earthing the point with 1.5 sq.mm. FRLS PVC insulated copper conductor single core cable etc. as required.. For Group A	Points.	160		
69	Wiring for twin control light point with 1.5 sq.mm FRLS PVC insulated copper conductor single core cable in surface / recessed medium class PVC conduit, 2 way modular switch, modular plate, suitable GI box and earthing the point with 1.5 sq.mm. FRLS PVC insulated copper conductor single core cable etc. as required.	Points.	20		
70	Circuit/Sub-main wiring in PVC conduit: Wiring for circuit/submain wiring along with earth wire with 2X4 sq. mm+ 1X4sq. mm earth wire of PVC insulated copper conductor, single core cable in surface/recessed PVC conduit as required.	Metre	1500		
71	Circuit/Sub-main wiring in PVC conduit: Wiring for circuit/submain wiring along with earth wire with 2X2.5 sq. mm+ 1X2.5sq. mm earth wire of PVC insulated copper conductor, single core cable in surface/recessed PVC conduit as required.	Metre	550		
72	Circuit/Sub-main wiring in PVC conduit: Wiring for circuit/submain wiring along with earth wire with 4 X 10 sq. mm + 2 X 10 sq. mm earth wire of PVC insulated copper conductor, single core cable in surface/recessed PVC conduit as required.	Metre	15		
73	Circuit/Sub-main wiring in PVC conduit: Wiring for circuit/submain wiring along with earth wire with 2X6 sq. mm+ 1X6sq. mm earth wire of PVC insulated copper conductor, single core cable in surface/recessed PVC conduit as required.	Metre	50		
74	Supplying and drawing 2 pair 0.5 mm dia FRLS PVC insulated annealed copper conductor, unarmored telephone cable in the existing surface/ recessed steel/ PVC conduit as required.	Metre	350		
75	Supplying and drawing co-axial TV cable RG-6 grade, 0.7 mm solid copper conductor PE insulated, shielded with fine tinned copper braid and protected with PVC sheath in the existing surface/ recessed steel/ PVC conduit as required.	Metre	350		
76	Supplying and fixing 2 modules, GI box along with modular base & cover plate for modular switches in recess etc as required.	Nos	60		
77	Supplying and fixing Telephone socket outlet on the existing modular plate & switch box including connections but excluding modular plate etc. as required.	Nos	40		
78	Supplying and fixing TV antenna socket outlet on the existing modular plate & switch box including connections but excluding modular plate etc. as required.	Nos	40		
79	Supplying and fixing of 25 mm of medium class PVC conduit along with accessories in surface/recess including cutting the wall and making good the same in case of recessed conduit as required.	Metre	350		
80	Supplying and fixing 2 + 4 way / 6 way, Double door, single pole and neutral, sheet steel, MCB distribution board, 240 volts, on surface/ recess, complete with tinned copper bus bar, neutral bus bar, earth bar, din bar, interconnections, powder painted including earthing etc. as required. (But without MCB/RCCB/Isolator)	Nos	1		
81	Supplying and fixing 2 + 12 way / 14 way, Double door, single pole and neutral, sheet steel, MCB distribution board, 240 volts, on surface/ recess, complete with tinned copper bus bar, neutral bus bar, earth bar, din bar, interconnections, powder painted including earthing etc. as required. (But without MCB/RCCB/Isolator)	Nos	3		
82	Supplying and fixing of 8 way (4 + 24), Double door surface/ recess mounting, vertical type, 415 volts, TPN MCB distribution board of sheet steel, dust protected, duly powder painted, inclusive of 200 amps tinned copper bus bar, common neutral link, earth bar, din bar for mounting MCB's (but without MCB's and incomer) as required.	Nos	1		
83	Supplying and fixing 5 amps to 32 amps rating, 240/415 volts, "C" curve, miniature circuit breaker suitable for inductive load Single poles in the existing MCB DB complete with connections, testing and commissioning etc. as required.	Nos	55		

84	Supplying and fixing 5 amps to 32 amps rating, 240/415 volts, "C" curve, miniature circuit breaker suitable for inductive load of Double poles in the existing MCB DB complete with connections, testing and commissioning etc. as required.	Nos	3		
85	Supplying and fixing 5 amps to 32 amps rating, 240/415 volts, "C" curve, miniature circuit breaker suitable for inductive load of Triple pole and neutral in the existing MCB DB complete with connections, testing and commissioning etc. as required.	Nos	1		
86	Supplying and fixing suitable size GI box with modular plate and cover in front on surface or in recess, including providing and fixing 3 pin 5/6 amps modular socket outlet and 5/6 amps modular switch, connection etc. as required.	Nos	120		
87	Supplying and fixing suitable size GI box with modular plate and cover in front on surface or in recess, including providing and fixing 6 pin 5/6 & 15/16 amps modular socket outlet and 15/16 amps modular switch, connection etc. as required.	Nos	60		
88	Supplying and fixing Ding-Dong call bell suitable for single phase, 230 volts, complete as required.	Nos	4		
89	Supplying and fixing stepped type electronic fan regulator on the existing modular plate switch box including connections but excluding modular plate etc. as required.	Nos	14		
90	Erection of wall bracket / ceiling fittings of all sizes and shapes containing upto two GLS lamps per fitting, complete with all accessories including connection etc. as required.		35		
91	Installation, testing and commissioning of pre-wired, fluorescent fitting / compact fluorescent fitting/LED fittings of all types, complete with all accessories and tube etc. directly on ceiling/ wall, including connection with 1.5 sq. mm FRLS PVC insulated, copper conductor, single core cable and earthing etc. as required.	Nos	50		
92	Installation, testing and commissioning of ceiling fan, including wiring the down rods of standard length (upto 30 cm) with 1.5 sq. mm FRLS PVC insulated, copper conductor, single core cable etc. as required.	Nos	14		
93	Supplying and fixing modular blanking plate on the existing modular plate & switch box excluding modular plate as required.	Nos	50		
94	Supplying and fixing single pole blanking plate in the existing MCB DB complete etc. as required.	Nos	25		
95	Earthing with G.I. earth pipe 4.5 metre long, 40 mm dia including accessories, and providing masonry enclosure with cover plate having locking arrangement and watering pipe etc. with charcoal/ coke and salt as required.	Nos	2		
96	Supplying and fixing of 8 way (4 + 24), Double door surface/ recess mounting, vertical type, 415 volts, TPN MCB distribution board of sheet steel, dust protected, duly powder painted, inclusive of 200 amps tinned copper bus bar, common neutral link, earth bar, din bar for mounting MCB's (but without MCB's and incomer) as required.	Nos	1		
97	Supplying and fixing 5 amps to 32 amps rating, 240/415 volts, "C" curve, miniature circuit breaker suitable for inductive load Single poles in the existing MCB DB complete with connections, testing and commissioning etc. as required.	Nos	55		
98	Supplying and laying 25 mm X 5 mm G.I strip at 0.50 metre below ground as strip earth electrode, including connection/ terminating with G.I. nut, bolt, spring, washer etc. as required. (Jointing shall be done by overlapping and with 2 sets of G.I. nut bolt & spring washer spaced at 50mm)	Metre	40		
99	Installation of exhaust fan Upto 450 mm sweep in the existing opening, including making good the damage, connection, testing, commissioning etc. as required.	Nos	5		
100	Supplying of LED Tube light, 18W, 230V AC. Complete set (Havells model-Endura /Philips/Syska make)	Nos	24		
101	Supplying of LED Tube light, 8/10W, 230V AC. Complete set (Havells model- Endura /Philips/Syska make)	Nos	24		
102	Supplying of Decorative wall mounting SS finish fixture with opal glass diffuser (Havells model-Aristo or equivalent of make Philips/Syska)	Nos	20		

103	Supplying of Surface decorative ceiling mounted LED fixture with electronic driver suitable for indoor applications. (Havells model-CROWNLED 12W or equivalent of make Philips/Syska)	Nos	5		
104	Supplying of Decorative wall light fixture made up of Polycarbonate (Havells model-CITY1-15W or equivalent of make Philips/Syska)	Nos	7		
105	Supplying of 250mm Sweep Domestic Exhaust Fan. Plastic body (Havells model-Ventil Air DX/Khaitan/Bajaj make)	Nos	5		
106	Total				
107 (a)	In case, as per the current status the party (service provider) is an Individual, HUF, or partnership firm including AOP	Service Tax (on.....% of total amount of SI No. 106) to be payable by party (.....%) (Rs)			
107 (b)		Service Tax (on.....% of total amount of SI No.106) to be payable by BHEL (.....%) (Rs)			
108	In case, as per the current status the party is a Private or Public limited Company	Service Tax (on.....% of total amount of SI No. 106) to be payable by party (.....%) (Rs)			
109 (a)	Total Amount inclusive of Service Tax	In case of Individual, HUF, or partnership firm including AOP (Total of 106+107a+107b) (Rs)			
109 (b)		In case of Private or Public limited Company (Total of 106+108) (Rs)			
Total Offer Value in Words : Rupees					

(Signature & seal of the contractor)