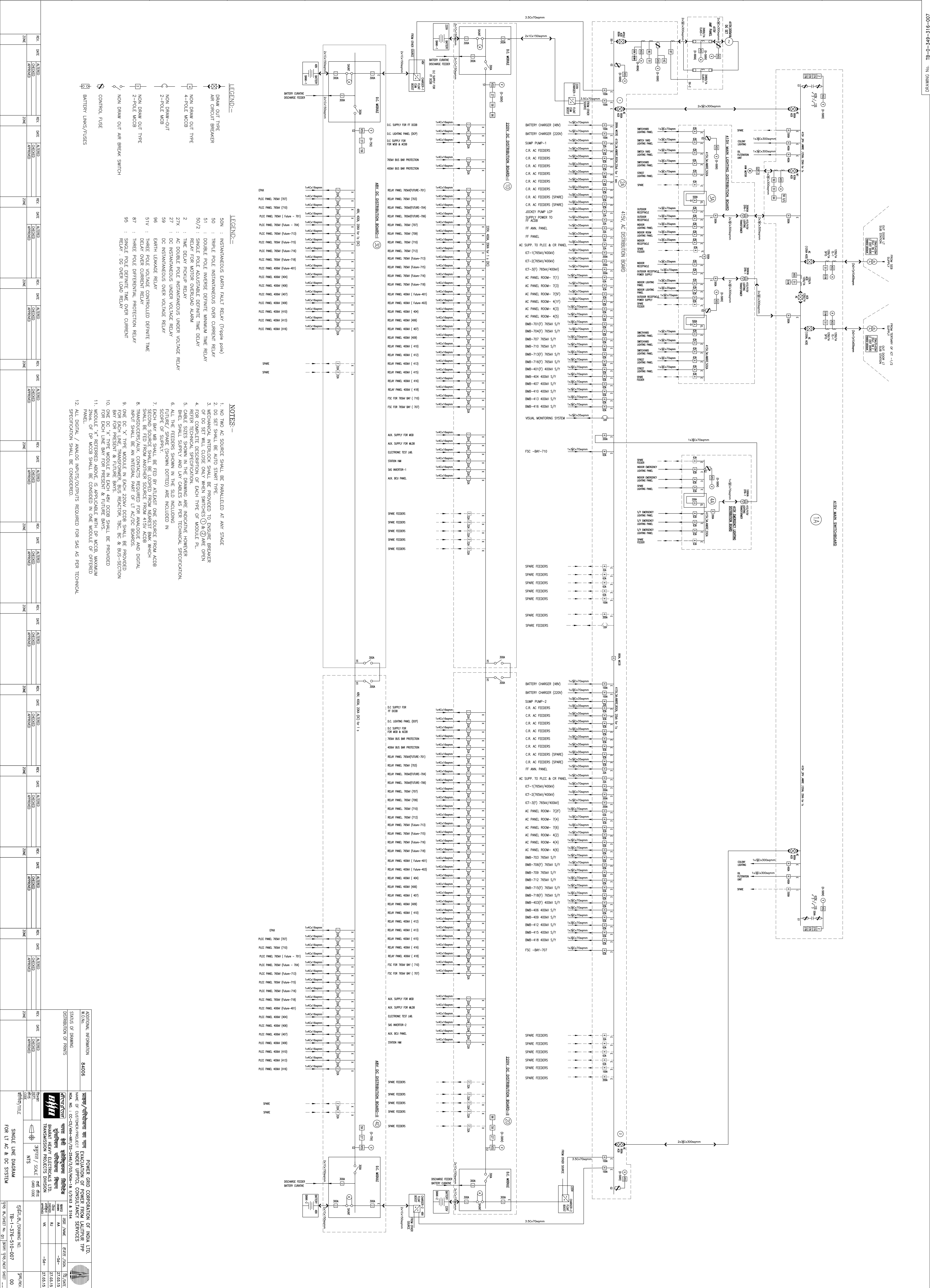


Information on this document is the property of BHARAT HEAVY ELECTRICALS LIMITED. It must not be used directly or indirectly in anyway detrimental to the interest of the company.

COMPUTER DRG. PATH NAME : ... INVENTORY No. SIGN. & DATE REF. DRG. No.



LEGEND table with symbols for Draw Out Type, Air Circuit Breaker, Non Draw Out Type, Non Draw Out Air Break Switch, Control Fuse, and Battery Links/Fuses.

LEGEND table with symbols for Instantaneous Earth Fault Relay, Trip Pole Instantaneous Over Current Relay, Double Pole Inverse Definite Minimum Time Relay, Single Pole Inverse Definite Minimum Time Relay, etc.

- NOTES: 1. NO TWO AC SOURCE SHALL BE PARALLELED AT ANY STAGE. 2. DC SET SHALL BE AUTO START TYPE. 3. MECHANICAL INTERLOCK SHALL BE PROVIDED TO ENSURE BREAKER OF DG SET WILL CLOSE ONLY WHEN SWITCHES (1) & (2) ARE OPEN. 4. FOR COMPLETE DESCRIPTION OF EACH TYPE OF MODULE PL. ROLET SHEET SHOWING THE DRAWING ARE INDICATED NUMBER. 5. BEHL SHALL SUPPLY AND LAY CABLES AS PER TECHNICAL SPECIFICATION. 6. ALL THE FEEDERS SHOWN IN THE SLD INCLUDING IN SCOPE OF SUPPLY. 7. EACH BAY AND SHALL BE FED BY ATLEAST ONE SOURCE FROM ACDBS. 8. TRANSFORMERS/AUX. CONTACTS REQUIRED FOR ANALOGUE AND DIGITAL INPUT SHALL BE AN INTEGRAL PART OF LT AC/DC BOARDS. 9. ONE DC 'X' TYPE MODULE IN EACH 220V DCDB SHALL BE PROVIDED FOR PRESENT AND FUTURE BAYS REACTION, TRC, BC & BUS-SECTION. 10. ONE DC 'X' TYPE MODULE IN EACH 48V DCDB SHALL BE PROVIDED FOR EACH LINE BAY FOR PRESENT & FUTURE BAYS. 11. MODULE 'X' REFERRED ABOVE IS APPLICABLE WITH GP, MCCB, MAXIMUM RATING OF DP MCCB SHALL BE CONSIDERED IN ONE MODULE OF OFFERED SPECIFICATION SHALL BE CONSIDERED.

POWER GRID CORPORATION OF INDIA LTD. EVACUATION OF POWER FROM LAIPUR TYP. STATUS OF DRAWING. DISTRIBUTION OF PRINTS. BHARAT HEAVY ELECTRICALS LTD. TRANSMISSION PROJECTS DIVISION. FOR LT AC & DC SYSTEM.