

# **TENDER SPECIFICATION**

**BHE/PW/PUR/PIVVG-CVL WP/1280**

**FOR**

**DEWATERING, REMOVAL OF SLUDGE, CLEANING AND MAKING DRY ENTIRE SURFACE AREA OF RCC WATER RETAINING STORAGE TANKS (WITH RCC ROOF SLAB), WATER PROOFING TREATMENT IN EXPANSION AND CONTRUCTION JOINTS AND LEAK PRONE AREA TO MAKE RCC TANK WATER TIGHT.**

**AT**

**2X350MW CCPP, GPPCL PIPAVAV, DISTT. AMRELI GUJARAT**

**TECHNICAL BID- VOLUME- I**

**TENDER SPECIFICATIONS CONSISTS OF:**

- **Notice Inviting Tender**
- **Volume 1 A - Technical Conditions of Contract,**
- **Volume 1 B - Special conditions of Contract,**
- **Volume 1 C - General conditions of Contract**
- **Volume 1 D - Forms & Procedures**
- **Drawings.**



**Bharat Heavy Electricals Limited**  
*(A Government of India Undertaking)*  
Power Sector - Western Region  
345-Kingsway, Nagpur-440001

<b>CONTENTS</b>			
Volume No	Description	Hosted in website bhel.com as files titled	No. of pages
NIL	Tender Specification Issue Details	(Part of <b><u>Vol-IA-1280</u></b> )	1
NIL	Notice Inviting Tender	(Part of <b><u>Vol-IA-1280</u></b> )	19
I-A	Technical Conditions of Contract	<b><u>Vol-IA-1280</u></b>	21
	Drawings		4
I-B	Special Conditions of Contract	<b><u>Vol-IBCD-1280</u></b>	47
I-C	General Conditions of Contract	(Part of <b><u>Vol-IBCD-1280</u></b> )	29
I-D	Forms & Procedures	(Part of <b><u>Vol-IBCD-1280</u></b> )	54
II	Price Bid Specification	<b><u>Vol-II-1280</u></b>	4

**TENDER SPECIFICATION**

**NO: BHE/PW/PUR/PIVVG-CVL WP/1280**

**DEWATERING, REMOVAL OF SLUDGE, CLEANING AND MAKING DRY ENTIRE SURFACE AREA OF RCC WATER RETAINING STORAGE TANKS (WITH RCC ROOF SLAB), WATER PROOFING TREATMENT IN EXPANSION AND CONTRUCTION JOINTS AND LEAK PRONE AREA TO MAKE RCC TANK WATER TIGHT.**

**AT**

**2X350MW CCPP, GPPCL PIPAVAV, DISTT. AMRELI GUJARAT**

EARNEST MONEY DEPOSIT: Refer Notice Inviting Tender

LAST DATE FOR TENDER SUBMISSION: Refer Notice Inviting Tender

THESE TENDER SPECIFICATION DOCUMENTS CONTAINING VOLUME-I AND VOLUME- II ARE ISSUED TO:

M/s. ....

.....

PLEASE NOTE:  
THESE TENDER SPECS DOCUMENTS ARE NOT TRANSFERABLE.

For Bharat Heavy Electricals Limited

AGM (Purchase)  
Place: Nagpur  
Date:

1280

# NOTICE INVITING TENDER

Bharat Heavy Electricals Limited



Ref: BHE/PW/PUR/PIPVG-CVL WP/ 1280

DT: 06/06/2014

**NOTICE INVITING TENDER (NIT)**  
**NOTE: BIDDER MAY DOWNLOAD FROM WEB SITES**  
**OR**  
**PURCHASE TENDERS FROM THIS OFFICE ALSO**

To

Dear Sir/Madam

**Sub: NOTICE INVITING TENDER**

Sealed offers in two part bid system are invited from reputed & experienced bidders (meeting [PRE QUALIFICATION CRITERIA](#) as mentioned in Annexure-I) for the subject job by the undersigned on the behalf of BHARAT HEAVY ELECTRICALS LIMITED as per the tender document. Following points relevant to the tender may please be noted and complied with.

**1.0 Salient Features of NIT**

SL NO	ISSUE	DESCRIPTION
i	TENDER NUMBER	BHE/PW/PUR/PIPVG- CVL WP/1280
ii	Broad Scope of job	<b>DEWATERING, REMOVAL OF SLUDGE, CLEANING AND MAKING DRY ENTIRE SURFACE AREA OF RCC WATER RETAINING STORAGE TANKS (WITH RCC ROOF SLAB), WATER PROOFING TREATMENT IN EXPANSION AND CONTRUCTION JOINTS AND LEAK PRONE AREA TO MAKE RCC TANK WATER TIGHT.</b>
iii	<b>DETAILS OF TENDER DOCUMENT</b>	
a	Volume-IA	<i>Technical Conditions of Contract (TCC) consisting of Scope of work, Technical Specification, Drawings, Procedures, Bill of Quantities, Terms of payment, etc</i> <span style="float: right;"><i>Applicable</i></span>
b	Volume-IB	<i>Special Conditions of Contract (SCC)</i> <span style="float: right;"><i>Applicable</i></span>
c	Volume-IC	<i>General Conditions of Contract (GCC)</i> <span style="float: right;"><i>Applicable</i></span>
d	Volume-ID	<i>Forms and Procedures</i> <span style="float: right;"><i>Applicable</i></span>
e	Volume-II	<i>Price Schedule (Absolute value).</i> <span style="float: right;"><i>Applicable</i></span>
iv	Issue of Tender Documents	<b>1. <u>Sale from BHEL PS Regional office at :</u></b> <b>Start : 06/06/2014</b> <b>Closes: 13/06/2014</b> <b>2. From BHEL website (<a href="http://www.bhel.com">www.bhel.com</a>)</b> Tender documents can however be downloaded from website till due date of submission <span style="float: right;"><i>Applicable</i></span>
v	DUE DATE & TIME OF OFFER SUBMISSION	<b>Date :16/06/2014 Time :15.00Hrs</b> <b>Place : BHEL OFFICE , NAGPUR</b> <span style="float: right;"><i>Applicable ( Date &amp; Time of submission given in covering letter )</i></span>

**BHEL PSWR  
Notice Inviting Tender**

Tender Specification No: BHE/PW/PUR/PIPVG-CVL WP/1280

Page 6 of 42

vi	<b>OPENING OF TENDER</b>	<b>1 hours after the latest due date and time of Offer submission</b> <i>Notes:</i> (1) In case the due date of opening of tender becomes a non-working day, tenders shall be opened on next working day at the same time. (2) Bidder may depute representative to witness the opening of tender	Applicable
vii	<b>EMD AMOUNT</b>	<b>Rs 2,00,000/- (Rupees Two Lakhs Only)</b>	Applicable
viii	<b>COST OF TENDER</b>	<b>Rs.2000/-</b>	Not Applicable
ix	<b>LAST DATE FOR SEEKING CLARIFICATION</b>	<i>Date: (Atleast 3 days before the due date of offer submission)</i> <i>Along with soft version also, addressing to undersigned &amp; to others as per contact address given below</i>	Applicable
x	<b>SCHEDULE OF Pre Bid Discussion (PBD)</b>	<i>Date: Not applicable.</i>	Not applicable.
xi	<b>INTEGRITY PACT &amp; DETAILS OF INDEPENDENT EXTERNAL MONITOR (IEM)</b>	<i>Not Applicable</i>	Not Applicable
xii	<b>Latest updates</b>	Shall be communicated to the bidders if any	

- 2.0 The offer shall be submitted as per the instructions of tender document and as detailed in this NIT. Bidders to note specifically that all pages of tender document, including these NIT pages of this particular tender together with subsequent correspondences shall be submitted by them, duly signed & stamped on each page, as part of offer. **Rates/Price including discounts/rebates, if any, mentioned anywhere/in any form in the techno-commercial offer other than the Price Bid, shall not be entertained.**
- 3.0 Unless specifically stated otherwise, bidder shall remit cost of tender and courier charges if applicable, in the form of Demand Draft drawn in favour of Bharat Heavy Electricals Ltd, payable at Power Sector Regional HQ at Nagpur issuing the Tender, along with techno-commercial offer. Bidder may also choose to deposit the Tender document cost by cash at the Cash Office as stated above against sl no iv of 1, on any working day; and in such case copy of Cash receipt is to be enclosed with the Techno Commercial offer. Sale of tender Documents shall not take place on National Holidays, holidays declared by Central or State Governments and BHEL PS HQ at Nagpur, Sundays and second/ last Saturdays
- 4.0 Unless specifically stated otherwise, bidder shall deposit EMD through Demand Draft/Pay Order in favour of Bharat Heavy Electricals Ltd, payable at Nagpur. For other details and for 'One Time EMD' please refer General Conditions of Contract.
- 5.0 **Procedure for Submission of Tenders:** The Tenderers must submit their Tenders to Officer inviting Tender, as detailed below:
- PART-I consisting of 'PART-I A (Techno Commercial Bid)' & 'PART-I B (EMD/COST of TENDER)' in two separate sealed and superscribed envelopes (ENVELOPE-I & ENVELOPE-II)
  - PART-II (Price Bid) – in sealed and superscribed envelope (ENVELOPE-III)
- 6.0 The contents for ENVELOPES and the superscription for each sealed cover/Envelope are as given below. **(All pages to be signed and stamped).**

**BHEL PSWR  
Notice Inviting Tender**

**Tender Specification No: BHE/PW/PUR/PIPVG-CVL WP/1280**

**Page 7 of 42**

Sl no	Description	Remarks
<b>Part-I A</b>		
	<p><b><u>ENVELOPE – I superscribed as :</u></b>                      PART-I (TECHNO COMMERCIAL BID)                      TENDER NO :                      NAME OF WORK :                      PROJECT:                      DUE DATE OF SUBMISSION:</p> <p><b>CONTAINING THE FOLLOWING:-</b></p>	
i.	Covering letter/Offer forwarding letter of Tenderer.	
ii.	Duly filled-in 'No Deviation Certificate' as per prescribed format to be placed after document under sl no (i) above.  <b>Note:</b> <ol style="list-style-type: none"> <li>a. In case of any deviation, the same should be submitted separately for technical &amp; commercial parts, indicating respective clauses of tender against which deviation is taken by bidder. The list of such deviation shall be placed after document under sl no (i) above. It shall be specifically noted that deviation recorded elsewhere shall not be entertained.</li> <li>b. BHEL reserves the right to accept/reject the deviations without assigning any reasons, and BHEL decision is final and binding.                             <ol style="list-style-type: none"> <li>i). In case of acceptance of the deviations, appropriate loading shall be done by BHEL</li> <li>ii). In case of unacceptable deviations, BHEL reserves the right to reject the tender</li> </ol> </li> </ol>	
iii.	Supporting documents/ annexure/ schedules/ drawing etc as required in line with Pre-Qualification criteria.  It shall be specifically noted that all documents as per above shall be indexed properly and credential certificates issued by clients shall distinctly bear the name of organization, contact ph no, FAX no, etc.	
iv.	All Amendments/Correspondences/Corrigenda/Clarifications/Changes/Errataetc pertinent to this NIT.	
v.	Integrity Pact Agreement (Duly signed by the authorized signatory)	If applicable
vi.	Duly filled-in annexures, formats etc as required under this Tender Specification/NIT	
vii.	Notice inviting Tender (NIT)	
viii.	Volume – I A : <u>Technical</u> Conditions of Contract (TCC) consisting of Scope of work, Technical Specification, Drawings, Procedures, Bill of Quantities, Terms of payment, etc	
ix.	Volume – I B : Special Conditions of Contract (SCC)	
x.	Volume – I C : General Conditions of Contract (GCC)	
xi.	Volume – I D : Forms & Procedures	
xii.	Volume – II (UNPRICED – without disclosing rates/price, but mentioning only 'QUOTED' or 'UNQUOTED' against each item	
xiii.	Any other details preferred by bidder with proper indexing.	
<b>PART-I B</b>		
	<b><u>ENVELOPE – II superscribed as:</u></b>	

**BHEL PSWR  
Notice Inviting Tender**

**Tender Specification No: BHE/PW/PUR/PIPVG-CVL WP/1280**

**Page 8 of 42**

	<p>PART-I (EMD/COST of TENDER) TENDER NO : NAME OF WORK : PROJECT: DUE DATE OF SUBMISSION:</p> <p><b>CONTAINING THE FOLLOWING:-</b></p>	
i.	<p>1. Earnest Money Deposit (EMD) in the form as indicated in this Tender <b>OR</b> Documentary evidence for 'One Time EMD' with the Power Sector Region of BHEL floating the Tender</p> <p>2. Cost of Tender ( Demand Draft or copy of Cash Receipt as the case may be)</p>	

	<b>PART-II</b>	
	<b>PRICE BID</b> consisting of the following shall be enclosed	
	<p><b><u>ENVELOPE-III</u></b> superscribed as: PART-II (PRICE BID) TENDER NO : NAME OF WORK : PROJECT: DUE DATE OF SUBMISSION:</p> <p><b>CONTAINING THE FOLLOWING</b></p>	
i	Covering letter/Offer forwarding letter of Tenderer enclosed in Part-I	
ii	Volume II – PRICE BID ( Duly Filled in Schedule of Rates – rate/price to be entered in words as well as figures)	

	<b>OUTER COVER</b>	
	<p><b><u>ENVELOPE-IV</u></b> (MAIN ENVELOPE / OUTER ENVELOPE) superscribed as: TECHNO-COMMERCIAL BID, PRICE BID &amp; EMD TENDER NO: NAME OF WORK: PROJECT: DUE DATE OF SUBMISSION:</p> <p><b>CONTAINING THE FOLLOWING:</b></p>	
i	<ul style="list-style-type: none"> <li>○ Envelopes I</li> <li>○ Envelopes II</li> <li>○ Envelopes III</li> </ul>	

**SPECIAL NOTE :** All documents/ annexures submitted with the offer shall be properly annexed and placed in respective places of the offer as per enclosure list mentioned in the covering letter. BHEL shall not be responsible for any missing documents.

7.0 Deviation with respect to tender clauses and additional clauses/suggestions in Techno-commercial bid / Price bid shall NOT be considered by BHEL. Bidders are requested to positively comply with the same.

8.0 BHEL reserves the right to accept or reject any or all Offers without assigning any reasons thereof. BHEL also reserves the right to cancel the Tender wholly or partly without assigning any reason thereof. Also BHEL shall not entertain any correspondence from bidders in this matter (except for the refund of EMD).

**9.0 Assessment of Capacity of Bidders:**

**Bidders capacity for executing the job under tender shall be assessed 'LOAD' wise and 'PERFORMANCE' wise as per the following:**

I. **LOAD:** Load takes into consideration ALL the contracts of the Bidder under execution with BHEL Regions, irrespective of whether they are similar to the tendered scope or not. The 'Load' is the sum of the unit wise identified packages (refer Table 1) for contracts with BHEL Regions. The cut off month for reckoning 'Load' shall be the month, two (2) months preceding the month corresponding to the 'latest date of bid submission', in the following manner:

(Note: For example if latest bid submission is in Aug 2011, then the 'load' shall be calculated upto and inclusive of June 2011)

i). Total number of Packages

Total number of Packages in hand = P

Where

- 'P' is the sum of all unit wise identified packages under execution with BHEL Regions as of the cut off month defined above, including packages yet to be commenced, excepting packages which are on HOLD due to reasons not attributable to Bidder..

II. **PERFORMANCE:** Here 'Monthly Performance' of the bidder for all the packages (under execution/ executed during the 'Period of Assessment' in all the Power Sector Regions of BHEL) SIMILAR to the packages covered under the tendered scope, excepting packages not commenced shall be taken into consideration. The 'Period of Assessment' shall be 6 months preceding the cut off month. The cut off month for reckoning 'Period of Assessment' shall be the month two (2) months preceding the month corresponding to the 'latest date of bid submission', in the following manner:

(Note: For example if 'latest date of bid submission' is in Aug 2011, then the 'performance' shall be assessed for a 6 month period upto and inclusive of June 2011, for all the unit wise identified packages (refer Table I)

i). Calculation of Overall 'Performance Rating' for 'similar Package/Packages' for the tendered scope under execution at Power Sector Regions for the 'Period of Assessment':

This shall be obtained by summing up the 'Monthly Performance Evaluation' scores obtained by the bidder in all Regions for all the similar Package/packages', divided by the total number of Package months for which evaluation should have been done, as per procedure below:

a)  $P_1, P_2, P_3, P_4, P_5, \dots, P_N$  etc be the packages (under execution/ executed during the 'Period of Assessment' in all Regions) SIMILAR to the packages covered under the tendered scope, excepting packages not commenced. Total number of similar packages for all Regions =  $P_T$  (i.e.  $P_T = P_1 + P_2 + P_3 + P_4 + \dots + P_N$ )

b) Number of Months ' $T_1$ ' for which 'Monthly Performance Evaluation' as per relevant formats, should have been done in the 'Period of Assessment' for the corresponding similar package  $P_1$ . Similarly  $T_2$  for package  $P_2$ ,  $T_3$  for package  $P_3$ , etc for the tendered scope. Now calculate cumulative total months ' $T_T$ ' for total similar Packages ' $P_T$ ' for all Regions (i.e.  $T_T = T_1 + T_2 + T_3 + T_4 + \dots + T_N$ )

c) Sum ' $S_1$ ' of 'Monthly Performance Evaluation' Scores ( $S_{1.1}, S_{1.2}, S_{1.3}, S_{1.4}, S_{1.5}, \dots, S_{1.N}$ ) for similar package  $P_1$ , for the 'period of assessment' ' $T_1$ ' (i.e.  $S_1 = S_{1.1} + S_{1.2} + S_{1.3} + S_{1.4} + S_{1.5} + \dots + S_{1.N}$ )

N). Similarly  $S_2$  for package  $P_2$  for period  $T_2$ ,  $S_3$  for package  $P_3$  for period  $T_3$ , etc for the tendered scope for all Regions. Now calculate cumulative sum ' $S_T$ ' of 'Monthly Performance Evaluation' Scores for total similar Packages ' $P_T$ ' for all Regions (i.e ' $S_T = S_1 + S_2 + S_3 + S_4 + S_5 + \dots + S_N$ ')

d) ~~Overall Performance Rating ' $R_{BHEL}$ ' for the similar Package/Packages (under execution/ executed during the 'Period of Assessment') in all the Power Sector Regions of BHEL);~~

~~Aggregate of Performance scores for all similar packages in all the Regions~~

~~=~~  
~~Aggregate of months for each of the similar package for which performance should have been evaluated in all the Regions~~

~~$S_T$~~   
~~=~~  
 ~~$T_T$~~

e) ~~Bidders to note that the risk of non evaluation or non availability of the 'Monthly Performance Evaluation' reports as per relevant formats is to be borne by the Bidder~~

f) ~~Table showing methodology for calculating 'a', 'b' and 'c' above~~

Sl no	Item Description	Details for all Regions							Total
		(iii)	(iv)	(v)	(vi)	(vii)	(viii)	(ix)	
1	Similar Packages for all Regions → (under execution/ executed during period of assessment)	$P_1$	$P_2$	$P_3$	$P_4$	$P_5$	...	$P_N$	Total No of similar packages for all Regions - $P_T$ ie Sum ( $\Sigma$ ) of columns (iii) to (ix)
2	Number of Months for which 'Monthly Performance Evaluation' as per relevant formats should have been done in the period of assessment for corresponding similar Package (as in row 1)	$T_1$	$T_2$	$T_3$	$T_4$	$T_5$	...	$T_N$	Sum ( $\Sigma$ ) of columns (iii) to (ix)  = $T_T$
3	Monthly performance scores for the corresponding period (as in Row 2)	$S_{1-1T}$ $S_{1-2T}$ $S_{1-3T}$ $S_{1-4T}$ ... $S_{1-T1}$	$S_{2-1T}$ $S_{2-2T}$ $S_{2-3T}$ $S_{2-4T}$ ... $S_{2-T2}$	$S_{3-1T}$ $S_{3-2T}$ $S_{3-3T}$ $S_{3-4T}$ ... $S_{3-T3}$	$S_{4-1T}$ $S_{4-2T}$ $S_{4-3T}$ $S_{4-4T}$ ... $S_{4-T4}$	$S_{5-1T}$ $S_{5-2T}$ $S_{5-3T}$ $S_{5-4T}$ ... $S_{5-T5}$	... ... ... ... ...	$S_{N-1T}$ $S_{N-2T}$ $S_{N-3T}$ $S_{N-4T}$ ... $S_{N-TN}$	<del>-----</del>
4	Sum of Monthly Performance scores of the corresponding Package for the corresponding period (as in row 3)	$S_1$	$S_2$	$S_3$	$S_4$	$S_5$	...	$S_N$	Sum ( $\Sigma$ ) of columns (iii) to (ix)  = $S_T$

**BHEL PSWR  
Notice Inviting Tender**

Tender Specification No: BHE/PW/PUR/PIPVG-CVL WP/1280

Page 11 of 42

- ii) Calculation of Overall 'Performance Rating' ( $R_{BHEL}$ ) in case 'similar Package/Packages' for the tendered scope ARE NOT AVAILABLE, during the 'Period of Assessment':

This shall be obtained by summing up the 'Monthly Performance Evaluation' scores obtained by the bidder in all Regions for ALL the packages, divided by the total number of Package months for which evaluation should have been done. ' $R_{BHEL}$ ' shall be calculated subject to availability of 'performance scores' for at least 6 'package months' in the order of precedence below:

- a) 'Period of Assessment.
- b) 12 months preceding the cut-off month
- c) 24 months preceding the cut-off month
- d) 36 months preceding the cut-off month

In case,  $R_{BHEL}$  cannot be calculated as above, then Bidder shall be treated as 'NEW VENDOR'. Further eligibility and qualification of this bidder shall be as per definition of 'NEW VENDOR' described in 'Explanatory Notes'

- iii) Factor "L" assigned based on Overall Performance Rating ( $R_{BHEL}$ ) at Power Sector Regions.:

Sl no	Overall Performance Rating ( $R_{BHEL}$ )	Corresponding value of 'L'
1	$=60$	NA
2	$> 60 \text{ and } \leq 65$	0.4
3	$> 65 \text{ and } \leq 70$	0.35
4	$> 70 \text{ and } \leq 75$	0.25
5	$> 75 \text{ and } < 80$	0.2
6	$\geq 80$	NA

**III. 'Assessment of Capacity of Bidder':**

'Assessment of Capacity of Bidder' is based on the Maximum number of packages for which a vendor is eligible, considering the performance scores of similar packages, as below:

Max number of packages  $P_{Max} = (R_{BHEL} - 60)$  divided by corresponding value of 'L'  
i.e.  $(R_{BHEL} - 60)/L$

Note:

- i. In case the value of  $P_{Max}$  results in a fraction, the value of  $P_{Max}$  is to be rounded off to next whole number
- ii. For  $R_{BHEL} = 60$ ,  $P_{Max} = '1'$
- iii. For  $R_{BHEL} \geq 80$ , there will be no upper limit on  $P_{Max}$

The Bidder shall be considered 'Qualified' as per 'Assessment of Capacity of Bidder' for the subject Tender if  $P \leq P_{Max}$   
(where P is calculated as per clause 9.1)

**IV. Explanatory note:**

- a) Similar package means Boiler or ESP or Piping or Turbine or Civil or Structure or Electrical or CI, etc at the individual level irrespective of rating of Plant, and irrespective of whether the subject tender is a single package or as part of combined/composite packages. Normally Boiler, ESP, Piping, Turbine, Electrical, CI, Civil, Structure, etc is considered individual level of package. For example in case the tendered scope is a Boiler Vertical Package comprising of Boiler, ESP and Power Cycle Piping (i.e the 'identified packages as per Table-1 below), the 'PERFORMANCE'

**BHEL PSWR  
Notice Inviting Tender**

Tender Specification No: BHE/PW/PUR/PIVVG-CVL WP/1280

Page 12 of 42

part against sl no II above, needs to be evaluated considering all the identified packages (ie Boiler, ESP and Power Cycle Piping) and finally the Bidder's capacity to execute the tendered scope is assessed in line with III above

b) Identified Packages (Unit wise)

**Table-1**

Civil	Electrical & CI	Mechanical
i). Enabling works	i). Electrical	i). Boiler & Aux (All types including CW Piping if applicable)
ii). Pile and Pile Caps	ii). CI	ii). Power Cycle Piping/Critical Piping
iii). Civil Works including foundations	iii). Others (Elec & CI)	iii). LP Piping
iv). Structural Steel Fabrication & Erection		iv). ESP
v). Chimney		v). Steam Turbine Generator set & Aux
vi). Cooling Tower		vi). Gas Turbine Generator set & Aux
vii). Others (Civil)		vii). Hydro Turbine Generator set & Aux
		viii). Turbo Blower (including Steam Turbine)
		ix). Material Handling
		x). Material Management
		xi). Material Handling & Material Management
		xii). Others (Mechanical)

e) Bidders who have not been evaluated for at least six package months in the last 36 months in the online BHEL system for contractor performance evaluation in BHEL PS Regions, wof July 2010 shall be considered "NEW VENDOR".

A 'NEW VENDOR' shall be considered qualified subject to satisfying all other tender conditions

A 'NEW VENDOR' if awarded a job (of package/packages identified under this clause) shall be tagged as "FIRST TIMER" on the date of first LOI from BHEL.

The "FIRST TIMER" tag shall remain till execution of work for a period of not less than 09 months, from the commencement of work of first package

A Bidder shall not be eligible for the next job as long as the Bidder is tagged as "FIRST TIMER" excepting for the Tenders which have been opened on or before the date of the bidder being tagged as 'FIRST TIMER'.

After removal of 'FIRST TIMER' tag, the Bidder shall be considered 'QUALIFIED' for the future tenders subject to satisfying all other tender conditions including 'Capacity Evaluation of Bidders'.

d) In the unlikely event of all bidders shortlisted against Technical and Financial Qualification criteria not meeting the criteria on 'Assessment of Capacity of Bidders' detailed above, OR leads to a single tender response on applying the criteria of 'Assessment of Capacity of Bidders' or due to non-approval by Customer, then BHEL at its discretion reserves the right to consider the further processing of the Tender based on the **Overall Performance Rating** 'R<sub>BHEL</sub>' only, starting from the upper band.

e) 'Under execution' shall mean works in progress as per the following:

i. up to Boiler Steam Blowing in case of Steam Generator and Auxiliaries

ii. upto Synchronisation in case of all other works excepting sl no (i) and (iii)

**BHEL PSWR  
Notice Inviting Tender**

**Tender Specification No: BHE/PW/PUR/PIPVG-CVL WP/1280**

**Page 13 of 42**

~~iii. Upto execution of at least 90% of anticipated contract value in case of Civil & Structures (unit wise), Enabling works and upto 90% of material unloading (in tonnage) as per the original contract in case of MM Package.~~

~~Note : BHEL at its discretion can extend (or reduce in exceptional cases in line with Contract conditions) the period defined against (i), (ii) and (iii) above, depending upon the balance scope of work to be completed.~~

~~f) Performance evaluation in CL 9 above is applicable to Prime bidder and consortium partner (or Technical tie up partner) for their respective scope of work~~

- 10.0 Since the job shall be executed at site, bidders must visit site/ work area and study the job content, facilities available, availability of materials, prevailing site conditions including law & order situation, applicable wage structure, wage rules, etc before quoting for this tender. They may also consult this office before submitting their offers, for any clarifications regarding scope of work, facilities available at sites or on terms and conditions.
- 11.0 For any clarification on the tender document, the bidder may seek the same in writing or through e-mail, as per specified format, within the scheduled date for seeking clarification, from the office of the undersigned. BHEL shall not be responsible for receipt of queries after due date of seeking clarification due to postal delay or any other delays. Any clarification / query received after last date for seeking clarification may not be normally entertained by BHEL and no time extension will be given.
- 12.0 BHEL may decide holding of pre-bid discussion [PBD] with all intending bidders as per date indicated in the NIT. The bidder shall ensure participation for the same at the appointed time, date and place as may be decided by BHEL. Bidders shall plan their visit accordingly. The outcome of pre-bid discussion (PBD) shall also form part of tender.
- 13.0 In the event of any conflict between requirement of any clause of this specification/ documents/drawings/data sheets etc or requirements of different codes/standards specified, the same to be brought to the knowledge of BHEL in writing for clarification before due date of seeking clarification (whichever is applicable), otherwise, interpretation by BHEL shall prevail. Any typing error/missing pages/ other clerical errors in the tender documents, noticed must be pointed out before pre-bid meeting/submission of offer, else BHEL's interpretation shall prevail.
- 14.0 Unless specifically mentioned otherwise, bidder's quoted price shall deemed to be in compliance with tender including PBD.
- 15.0 Bidders shall submit Integrity Pact Agreement (Duly signed by authorized signatory who signs in the offer), **if applicable**, along with techno-commercial bid. This pact shall be considered as a preliminary qualification for further participation. **The names and other details of Independent External Monitor (IEM) for the subject tender is as given at point (1) above.**
- 16.0 The Bidder has to satisfy the Pre Qualifying Requirements stipulated for this Tender in order to be qualified. The Price Bids of only those bidders will be opened who will be qualified for the subject job on the basis of satisfying the Pre Qualification Criteria specified in this NIT as per Annexure-I (as applicable), past performance etc. and date of opening of price bids shall be intimated to only such bidders. BHEL reserves the right not to consider offers of parties under HOLD.
- 17.0 In case BHEL decides on a 'Public Opening', the date & time of opening of the sealed PRICE BID shall be intimated to the qualified bidders and in such a case, bidder may depute one authorised representative to witness the price bid opening. BHEL reserves the right to open 'in-camera' the 'PRICE BID' of any or all Unsuccessful/Disqualified bidders under intimation to the respective bidders.
- 18.0 Validity of the offer shall be for **six months** from the latest due date of offer submission (including extension, if any) unless specified otherwise.
- 19.0 BHEL reserves the right to decide the successful bidder on the basis of Reverse Auction process. In such case all qualified bidders will be intimated regarding procedure/ modality for Reverse Auction process prior to Reverse Auction and price will be decided as per the rules for Reverse Auction. .

**BHEL PSWR  
Notice Inviting Tender**

**Tender Specification No: BHE/PW/PUR/PIPVG-CVL WP/1280**

**Page 14 of 42**

---

However, if reverse auction process is unsuccessful as defined in the RA rules/procedures, or for whatsoever reason, then the sealed 'PRICE BIDS' will be opened for deciding the successful bidder. BHEL's decision in this regard will be final and binding on bidder.

- 20.0 On submission of offer, further consideration will be subject to compliance to tender & qualifying requirement and customer's acceptance, as applicable.
- 21.0 In case the bidder is an "Indian Agent of Foreign Principals", 'Agency agreement has to be submitted along with Bid, detailing the role of the agent along with the terms of payment for agency commission in INR, along with supporting documents.
- 22.0 The bidders shall not enter into any undisclosed M.O.U. or any understanding amongst themselves with respect to tender.
- 23.0 Consortium Bidding (or Technical Tie up) shall be allowed only if specified in Pre Qualifying Requirement (PQR) criteria, and in such a case the following shall be complied with:
- 23.1 Prime Bidder and Consortium Partner or partners are required to enter into a consortium agreement with a validity period of six months initially. In case the consortium is awarded the contract, then the Consortium Agreement between the Prime Bidder and Consortium Partner or partners shall be extended till contractual completion period including extension periods if any applicable.
- 23.2 'Stand alone' bidder cannot become a **Prime Bidder** or a **Consortium bidder** or **Technical Tie up bidder** in a consortium (or Technical Tie up) bidding. Prime bidder shall neither be a consortium partner to other prime bidder nor take any other consortium partners. However, consortium partner may enter into consortium agreement with other prime bidders. In case of non compliance, consortium bids of such Prime bidders will be rejected.
- 23.3 Number of partners for a consortium Bidding (or Technical Tie up) shall be as specified in the PQR
- 23.4 Prime Bidder shall be as specified in the Pre Qualification Requirement, else the bidder who has the major share of work
- 23.5 In order to be qualified for the tender, Prime Bidder and Consortium partner or partners shall satisfy (i) the Technical 'Pre Qualifying Requirements' specified for the respective package, (ii) "Assessment of Capacity of Bidder" as specified in clause 9.0
- 23.6 Prime Bidder shall comply with additional 'Technical' criteria of PQR as defined in 'Explanatory Notes for the PQR'
- 23.7 Prime Bidder shall comply with all other Pre Qualifying criteria for the Tender unless otherwise specified
- 23.8 In case customer approval is required, then Prime Bidder and Consortium Partner or partners shall have to be individually approved by Customer for being considered for the tender.
- 23.9 Prime Bidder shall be responsible for the overall execution of the contract
- 23.10 In case of award of job, Performance shall be evaluated for Prime Bidder and Consortium Partner or partners for their respective scope of work(s) as per prescribed formats
- 23.11 In case the Consortium partner or partners back out, their SDs shall be encashed by BHEL. In such a case, other consortium partner or partners meeting the PQR have to be engaged by the Prime Bidder,

**BHEL PSWR  
Notice Inviting Tender**

**Tender Specification No: BHE/PW/PUR/PIPVG-CVL WP/1280**

**Page 15 of 42**

and if not, the respective work will be withdrawn and executed on risk and cost basis of the Prime Bidder. The new consortium partner or partners shall submit fresh SDs as applicable.

- 23.12 In case the prime Bidder withdraws, the whole contract shall be considered cancelled and short closed.
- 23.13 After execution of work, the work experience shall be assigned to the Prime Bidder and the consortium partner or partners for their respective scope of work. After successful execution of two similar works with the same consortium partner or partners under direct orders of BHEL, the Prime Bidder shall be eligible for becoming a 'stand alone' bidder for similar works, subject to certification from BHEL about the active involvement of the Prime Bidder for satisfactory execution of the works.
- 23.14 The consortium partner shall submit SD equivalent to 2% of the total contract value in addition to the SD to be submitted by the prime Bidder for the total contract value. In case there are two consortium partners, then each partner shall submit SD equivalent to 1% of the total contract value in addition to the SD to be submitted by the prime Bidder for the total contract value.
- 23.15 In case of a Technical Tie up, all the clauses applicable for the Consortium partner shall be applicable for the Technical Tie up partner also
- 24.0 The bidder shall submit documents in support of possession of 'Qualifying Requirements' duly self certified and stamped by the authorized signatory, indexed and properly linked in the format for PQR. In case BHEL requires any other documents/proofs, these shall be submitted immediately.
- 25.0 The bidder may have to produce original document for verification if so decided by BHEL.
- 26.0 Order of Precedence  
In the event of any ambiguity or conflict between the Tender Documents, the order of precedence shall be in the order below:
- a. Amendments/Clarifications/Corrigenda/Errata etc issued in respect of the tender documents by BHEL
  - b. Notice Inviting Tender (NIT)
  - c. Price Bid
  - d. Technical Conditions of Contract (TCC)—Volume-1A
  - e. Special Conditions of Contract (SCC) —Volume-1B
  - f. General Conditions of Contract (GCC) —Volume-1C
  - g. Forms and Procedures —Volume-1D

It may please be noted that guidelines/rules in respect of suspension of business dealings', 'Vendor evaluation format', 'Quality, Safety & HSE guidelines', etc may undergo change from time to time and the latest one shall be followed

for BHARAT HEAVY ELECTRICALS LTD

AGM Purchase

**Enclosure**

01. Annexure-1: Pre Qualifying criteria.
02. Annexure – 2 Check List.
03. Annexure-3 IMPORTANT INFORMATION
04. Other Tender documents as per this NIT.

**ANNEXURE - 1**

**PRE QUALIFYING CRITERIA**

JOB	DEWATERING, REMOVAL OF SLUDGE, CLEANING AND MAKING DRY ENTIRE SURFACE AREA OF RCC WATER RETAINING STORAGE TANKS (WITH RCC ROOF SLAB), WATER PROOFING TREATMENT IN EXPANSION AND CONTRUCTION JOINTS AND LEAK PRONE AREA TO MAKE RCC TANK WATER TIGHT AT 2X350MW CAPP, GPPCL PIPAVAV, DISTT. AMRELI GUJARAT.
TENDER NO	<b>BHE/PW/PUR/PIPVG-CVL WP/1280</b>

SL NO	PRE QUALIFICATION CRITERIA	Bidders claim in respect of fulfilling the PQR Criteria	
		Name and Description of qualifying criteria	Page no of supporting document. Bidder must fill up this column as per applicability
A	Submission of Integrity Pact duly signed (if applicable) (Note: To be submitted by Prime Bidder & Consortium/Technical Tie up partner jointly in case Consortium bidding is permitted, otherwise by the sole bidder)	Not APPLICABLE	
B	<b><u>Technical</u></b>  Bidder must have successfully executed similar work (i.e water proofing works Concrete Structure / Surface ) among any of listed below in last seven (7) years as on latest date of bid submission;  B.1) One similar work of value not less than Rs. 58 Lakhs or One Water proofing work of min. 12,000 Sq. Meter surface.  <b>OR</b>  B.2) Two similar works each of value not less than Rs.36.25 Lakhs or Two Water proofing works each of min.7500 Sq. Meter surface.  <b>OR</b>  B.3) Three similar works each of value not less than Rs. 29 Lakhs or Three Water proofing works each of min. 6000 Sq. Meter surface.	APPLICABLE	
C-1	<b><u>Financial TURNOVER</u></b> Bidders must have achieved an average annual financial turnover (Audited) of <b>Rs. 87 Lakhs or more</b> over last three Financial Years (FY) i.e. 2011-2012, 2012-2013, 2013-14 OR 2010-2011, 2011-12 and 2012-13 if Annual Accounts for FY 2013-14 are not audited.	APPLICABLE	

**BHEL PSWR  
Notice Inviting Tender**

**Tender Specification No: BHE/PW/PUR/PIPVG-CVL WP/1280**

**Page 17 of 42**

C-2	<b>NETWORTH</b> (only in case of Companies) Net worth of the Bidder based on the latest Audited Accounts as furnished for 'C-1' above should be positive	<b>APPLICABLE</b>	
C-3	<b>PROFIT</b> Bidder must have earned cash profit in any one of the three Financial Years as applicable in the last three Financial Years defined in 'C-1' above based on latest Audited Accounts.	<b>APPLICABLE</b>	
D	Assessment of Capacity of Bidder to execute the work as per sl no 9 of NIT (if applicable)	<b>NOT APPLICABLE</b>	By BHEL
E	Approval of Customer (if applicable)  <b>Note:</b> Names of bidders (including consortium/Technical Tie up partners in case consortium bidding is permitted) who stand qualified after compliance of criteria A to D shall be forwarded to customer for their approval.	<b>APPLICABLE</b>	BY BHEL
F	Price Bid Opening <b>Note:</b> Price Bids of only those bidders shall be opened who stand qualified after compliance of criteria A to E	<b>APPLICABLE</b>	BY BHEL
F	Technical Tie up criteria (if applicable)	<b>NOT APPLICABLE</b>	
<p><b><u>Explanatory Notes for the PQR (unless otherwise specified in the PQR):</u></b></p> <ol style="list-style-type: none"> <li>Bidder to submit Audited Balance Sheet and Profit and Loss Account for the respective years as indicated against C-1 above along with all annexures</li> <li>In case audited Financial statements have not been submitted for all the three years as indicated against C-1 above, then the applicable audited statements submitted by the bidders against the requisite three years, will be averaged for three years i.e total divided by three.</li> <li>C-2:-NETWORTH : Shall be calculated based on the latest Audited Accounts as furnished for C-1 above. Net worth = Paid up share capital + Reserves. (Net worth is required to be evaluated in case of companies)</li> <li>C-3:- PROFIT : shall be NET profit (PAT + Non cash expenditure viz depreciation) earned during any one of the three financial years as in C-1 above</li> <li>'Additional' Criteria in respect of 'Technical' criteria of PQR (as in 'B' above) for Civil, Electrical, CI, unless otherwise specified : <ol style="list-style-type: none"> <li>_____ Bidder should have executed similar work of any one of the following: <ol style="list-style-type: none"> <li>_____ One (1) work of value not less than Rs XXX _____ OR</li> <li>_____ Two (2) works of not less than Rs YYY _____ OR</li> <li>_____ Three (3) works of not less than Rs ZZZ (Value XXX, YYY, ZZZ shall be as indicated by BHEL)</li> </ol> </li> <li>_____ 'Similar' work for criteria 5 above means <ol style="list-style-type: none"> <li>_____ Civil or Structures or Civil &amp; Structures or Chimney respectively as applicable to the tendered scope in respect of 'CIVIL' Works</li> <li>_____ Electrical works in respect of 'ELECTRICAL'</li> <li>_____ CI works in respect of 'CI' Works</li> <li>_____ Material Handling and/or Management works in respect of 'MM' works</li> </ol> </li> </ol> </li> <li>Time period for achievement of the 'Technical' criteria of PQR (as in 'B' above) will be the last 7 years ending on the 'latest date' of Bid submission</li> <li>'EXECUTED' means the Vendor should have achieved the criteria specified in the Technical criteria of PQR (as in 'B'</li> </ol>			

**BHEL PSWR  
Notice Inviting Tender**

**Tender Specification No: BHE/PW/PUR/PIVPG-CVL WP/1280**

**Page 18 of 42**

	<p>above) even if the Contract has not been completed or closed</p> <p>8. Unless otherwise specified, for the purpose of 'Technical' criteria of PQR ( as in 'B' above), the word 'EXECUTED' means:</p> <ol style="list-style-type: none"><li>1. "BOILER LIGHT UP" in respect of Boiler &amp; Aux and ESP</li><li>2. "SYNCHRONISATION" in respect of STG/GTG and 'SPINNING' in case of HTG</li><li>3. "STEAM BLOWING COMPLETION" in respect of at least Main Steam Line of Power Cycle Piping</li><li>4. "HYDRAULIC TEST" of the system in respect of Structures, Pressure parts/IBR Piping</li><li>5. "CHARGING" in respect of power Transformers, Bus ducts, HT/LT switchgears</li><li>6. "Completion of RCC Shell and liner (steel or brick as per tendered scope) up to the HEIGHT specified using slip form" in case of RCC Chimney.</li><li>7. Achievement of physical Quantities as per respective PQRs in respect of Civil &amp; Structures and Piling Works</li><li>8. 'Readiness for coal Filling" in respect of Bunker Structure Work.</li></ol> <p>9. Boiler means HRSG or WHRB or any other types of Steam Generator</p> <p>10. Critical/Power Cycle piping means Main Steam, Hot Reheat, Cold Reheat, HP Bypass, LP Bypass lines</p> <p>11. For the purpose of evaluation of the PQR, one MW shall be considered equivalent to 3.5TPH where ever rating of HRSG/BOILER is mentioned in MW. Similarly, where ever rating of Gas Turbine is mentioned in terms of Frame size, ISO rating in terms of MW shall be considered for evaluation.</p> <p>12. In case the experience/PO/WO certificate enclosed by bidders do not have separate break up prices for the E&amp;C portion of Electrical and CI Works, (i.e. the certificates enclosed are for composite order for supply and erection of Electrical &amp; CI and other works if any), then value of Erection and Commissioning for the Electrical &amp; CI portion shall be considered as 15% of the supply &amp; erection of Electrical &amp; CI, unless otherwise specifically indicated in the PQR.</p> <p>13. Scope for capital overhaul of STG shall cover Bearing Inspection work and overhauling of all cylinders of the Turbine unless otherwise specifically indicated in the PQR.</p> <p>14. In case the tendered scope is not a Pulverised Fuel Boiler, experience of Oil/Gas Fired Boilers also can be considered unless otherwise specifically indicated in the PQR</p> <p><b>15. The value of work (Experience submitted against PQR B) shall be updated as per the PVC indices for "All India Avg. Consumer Price Index for Industrial Workers" with base month as date of execution (completion of contract/work) and indexed upto two months prior to bid opening month.</b></p>
--	--

BIDDER SHALL SUBMIT ABOVE PRE-QUALIFICATION CRITERIA FORMAT, DULY FILLED-IN, SPECIFYING RESPECTIVE ANNEXURE NUMBER AGAINST EACH CRITERIA AND FURNISH RELEVANT DOCUMENT IN THE RESPECTIVE ANNEXURES IN THEIR OFFER.

**CHECK LIST****NOTE:- Tenderers are required to fill in the following details and no column should be left blank**

1	Name and Address of the Tenderer		
2	Details about type of the Firm/Company		
3	Details of Contact person for this Tender	Name : Mr/Ms Designation: Telephone No: Mobile No: Fax No:	
4	EMD DETAILS	DD No:                      Date : Bank :                      Amount: <u>Please tick ( ✓ ) whichever applicable:-</u> ONE TIME EMD / ONLY FOR THIS TENDER	
		APPLICABILITY	BIDDER REPLY
6	Whether the format for compliance with <b>PRE QUALIFICATION CRITERIA</b> (ANNEXURE-I) is understood and filled with proper supporting documents referenced in the specified format	Applicable	YES / NO
7	Audited profit and Loss Account for the last three years submitted	Applicable	YES/NO
8	Copy of PAN Card submitted	Applicable	YES/NO
9	Whether all pages of the Tender documents including annexures, appendices etc are read understood and signed	Applicable/Not Applicable	YES/NO
10	Integrity Pact	<b>Not Applicable</b>	-----
11	Declaration by Authorised Signatory submitted	Applicable	YES/NO
12	No Deviation Certificate submitted	Applicable	YES/NO
13	Declaration confirming knowledge about Site Conditions submitted	Applicable	YES/NO
14	Declaration for relation in BHEL submitted	Applicable	YES/NO
15	Non Disclosure Certificate submitted	Applicable	YES/NO
16	Bank Account Details for E-Payment submitted	Applicable	YES/NO
17	Capacity Evaluation of Bidder for current Tender	Not Applicable	-----

18	<b>Tie Ups/Consortium Agreement against this tender</b>	<b>Not Applicable for this tender</b>	-----
19	Power of Attorney for Submission of Tender/Signing Contract Agreement submitted	Applicable	YES/NO
20	Analysis of Unit rates submitted	Applicable	YES/NO

NOTE: STRIKE OFF 'YES' OR 'NO', AS APPLICABLE

**DATE:**

**AUTHORISED SIGNATORY**  
**(With Name, Designation and Company seal)**

### **IMPORTANT INFORMATION**

1. The offers of the bidders who are on the banned list as also the offer of the bidders, who engage the services of the banned firms, shall be rejected. The list of banned firms is available on BHEL web site ( [www.bhel.com](http://www.bhel.com) ---> Tender Notification -> List of Banned Firms )
2. All Statutory Requirements as applicable for this project shall be complied with.
3. Please take note of following Revised Tender Clauses:
  - i. Notice Inviting Tender: SI No 9
  - ii. General conditions of Contract: Clause No 1.15.13 (New), Clause No 2.8.3, 2.8.4 and 2.8.5
4. Following Notes are added to Form F- 15 of Volume I D 'Forms & procedures'
  - i. It is only indicative and shall be as per the online format issued by BHEL time to time.
  - ii. No request will be entertained after specified date of the current month w.r.t the changes requested in the scores of immediate previous month.

#### **5. PRICE VARIATION CLAUSE**

**Price Variation Compensation Clause no. 2.17 of Vol I C GCC shall not be Applicable:**

#### **6. OVER RUN COMPENSATION**

**Over Run Compensation Clause no. 2.12 of Vol I C GCC shall not be Applicable**

#### **7. In continuation to Clause 19.0 of NIT (Notice Inviting Tender) following are the broad terms and conditions of Reverse Auction:**

##### **19. Terms & Condition of Reverse Auction**

19.1. BHEL reserves the right to go for Reverse Auction (RA) instead of opening the sealed envelope price bid, submitted by the bidder. This will be decided after techno-commercial evaluation. All bidders to give their acceptance for participation in RA. Non-acceptance to participate in RA may result in non-consideration of their bids. In case BHEL decides to go for Reverse Auction, only those bidders who have given their acceptance to participate in RA will be allowed to participate in the Reverse Auction. Those bidders who have given their acceptance to participate in Reverse Auction will have to necessarily submit „online sealed bid“ in the Reverse Auction. Non-submission of „online sealed bid“ by the bidder will be considered as tampering of the tender process and will invite action by BHEL as per extant guidelines in vogue.

19.2. The philosophy followed for reverse auction shall be English Reverse (No ties). English Reverse (No ties) is a type of auction where the starting price and bid decrement are announced before start of online reverse auction. The

.....  
interested bidders can thereupon start bidding in an iterative process wherein the lowest bidder at any given moment can be displaced by an even lower bid of a competing bidder, within a given time frame. The bidding is with reference to the current lowest bid in the reverse auction. All bidders will see only the current lowest quoted price. The term „No ties” is used since more than one bidder cannot give an identical price, at a given instant, during the reverse auction. In other words, there shall never be a tie in the bids.

19.3. Technically and commercially acceptable bidders only shall be eligible to participate.

19.4. BHEL will engage the services of a service provider who will provide all necessary training and assistance before commencement of on line bidding on internet. Business rules for Reverse Auction and other information like event date, time, bid decrement, extension etc. also will be communicated through service provider for compliance.

**19.5.** After receipt of “online sealed bids” by the participating bidders, start price & bid decrement will be decided by BHEL, before the online Reverse Auction. Only those bidders who have submitted the “on-line sealed bid” within the scheduled time shall be eligible to participate further in RA process. **However, the H1 bidder (whose quote is highest in online sealed bid) may not be allowed to participate in further RA.** Once participating bidders have given ‘Online Sealed Bid’ and ‘start price’ & ‘bid decrement’ is decided by BHEL, Bidding for RA will start as per RA schedule specified in business rules. Bidders may then submit their bids (current L-1 price(s) lowered by multiple decrements). If the ‘start price’ decided by BHEL is same as the ‘Online Sealed Bid’ price of any bidder, then that bidder shall be reckoned as current L1 automatically at the start of

Reverse Auction and no acceptance of that price is required i.e (RA shall deemed to have started at this stage for further bidding)

19.6. If the Bidder or any of his representatives are found to be involved in Price manipulation/ cartel formation of any kind, directly or indirectly by communicating with other bidders, action *as per extant BHEL guidelines*, shall be initiated by BHEL and the results of the RA scrapped/ aborted.

19.7. The Bidder shall not divulge either his Bids or any other exclusive details of BHEL to any other party

1280

# TECHNICAL CONDITIONS OF CONTRACT (TCC)

BHARAT HEAVY ELECTRICALS  
LIMITED



## TECHNICAL CONDITIONS OF CONTRACT (TCC) CONTENTS

---

<b>SINo</b>	<b>DESCRIPTION</b>	<b>Chapter</b>	<b>No. OF PAGES</b>
<b>Volume-IA</b>	<b>Part-I: Contract specific details</b>		
1	Project Information	Chapter-I	2
2	Scope of Works and Technical Specifications	Chapter-II	4
3	Facilities in the scope of Contractor/BHEL (Scope Matrix)	Chapter-III	4
4	T&Ps and MMEs to be deployed by Contractor	Chapter-IV	1
5	T&Ps and MMEs to be deployed by BHEL on sharing basis	Chapter-V	1
6	Time Schedule	Chapter-VI	1
7	Terms of Payment	Chapter-VII	2
8	Taxes and other Duties	Chapter-VIII	2
9	Tender Drawings	Chapter-IX	4 Nos.

# TECHNICAL CONDITIONS OF CONTRACT (TCC)

## Chapter - I: Project Information

<b>1.0</b>	<b>Project Information</b>
<b>1.1</b>	<p><b><u>INTRODUCTION</u></b> This is a 2x350MW Gas Based Combined Cycle Power Plant (CCPP) at Pipavav Distt. Amreli (Gujarat). The entire work of this project have been awarded to BHEL on total turn-key basis (EPC Contract) comprising of Design, Engineering, Manufacturing, Supply, transportation, Unloading, Storage, erection, testing, Commissioning with Auxiliaries and ancillaries including civil &amp; structural and land grading works and handing over the plant in phased manner .</p> <p>The plant is located at a distance of 375 Km from Ahmadabad city of Gujarat state on the State Highway NH-34 running between Rajula and Jafrabad. Contractor is advised to visit the site and appraise himself about the conditions of the site and infrastructure available in the area for fulfilling their commitment under the contract.</p> <p><b><u>APPROACH TO SITE</u></b> <b>Location:</b></p> <p>In Amreli District of Gujarat State, Latitude 71° 16' N / Longitude 20° 54' E</p> <p>The site is a PIPAVAV Plant of GSPC in Amreli District of State of Gujarat.</p> <p><b>Power Station Site:</b> 3 Meter above MSL, Graded Level Elevation above mean sea level (MSL)</p> <p><b>Nearest Railway Station:</b> Rajula</p> <p><b>Nearest Town:</b> Rajula Town (16km)</p> <p><b>Nearest Airport:</b> Diu (80 kms) / Ahmadabad (375kms by road)</p> <p><b>Nearest Seaport:</b> Pipavav (35 kms)</p> <p><b>Access by Road:</b> PIPAVAV is connected by road from State Highway NH 34 running between Rajula and Jafrabad.</p> <ol style="list-style-type: none"><li>Owner: GSPC PIPAVAV POWER COMPANY Ltd (GPPCL)</li><li>Project Title: 2X351.43 MW PIPAVAV CCPP</li><li>Location: Village: Kovaya Near pipavav Taluka: Rajula, Distt: Amreli, Gujarat, India</li><li>Nearest Railway Station: Rajula</li><li>Ambient Air Temperature:<ol style="list-style-type: none"><li>Highest ever temperature recorded (Dry Bulb): 43 deg.C</li><li>Lowest ever temperature recorded (Dry Bulb) : 10 deg.C</li><li>Maximum Daily Average (Dry Bulb) :33 deg C</li><li>Average Mean temperature (Dry Bulb) : 33 deg C (For CCPP Performance)</li><li>Average Mean temperature (Wet Bulb) : 28 deg C (For CCPP Performance)</li></ol></li></ol>

# TECHNICAL CONDITIONS OF CONTRACT (TCC)

## Chapter - I: Project Information

---

	<p>f. Average Mean temperature (Wet Bulb) : 28.5 deg C (For Cooling Tower Performance)</p> <p>g. Design Ambient for Electrical Equipment : 50 deg C</p> <p>6. Relative Humidity</p> <p>a. Maximum: 89%</p> <p>b. Minimum: 10%</p> <p>c. Average: 70%</p> <p>7. Rainfall</p> <p>a. Annual Average – 1050 mm in the period June to October. Maximum intensity of rainfall; 150 mm/hr continuously maximum rainfall in a day – 400mm.</p> <p>8. Wind Data : 16.5 km/hr</p> <p>9. Seismic Zone - Zone III as per IS: 1893-2005 (Part – IV)</p> <p>10. Ambient Air Quality - The site is located close to Kovaya village and is bordering Birla group Cement plant and colony .This area is classified under semi-urban area.</p>
--	--

# TECHNICAL CONDITIONS OF CONTRACT (TCC)

## Chapter - II : Scope of Works and Technical Specifications

### 2.0 Scope of Work:-

Preamble:- BHEL PSWR has constructed four RCC water storage tanks with RCC Roof Slab for storage of treated water for use in operation in gas based power plant at PIPVAV, Village – KovayaTaluka – Rajula, DIST – AMRELI, GUJARAT. RCC Tanks have been constructed on rocky hard strata at ground level.

All the tanks have been filled with treated water during commissioning of unit # 02 in last year 2012 and it was observed that there is a loss of treated water/chemicals through expansion joints as well constructions joints provided in base raft. The loss of treated water is substantial (160 - 300mm per day). The leakage of all the tanks visible from outside attended by civil agency through nozzle & pressure grouting however the water loss/drop could not be controlled. Hence it is suspected that the loss of treated water and chemicals are from the expansion joints and construction joints provided in base raft of the tank. RCC water storage tanks with RCC roof Slab have been tabulated as below:-

Sl. No	Name of Tanks	Nos. of Expn. Joints	No. of Const. Joints	Length in Mtr	Width in Mtr	Max. water level	Water storage Capacity in Cum	Remarks
01	Permeate water tank	4	21	73.80	73.80	2.45	13615	RCC Roof Slab
02	Clarified water tank	5	19	70.50	72.00	3.9	19797	-DO-
03	D M Clarified water tank	5	23	79.50	80.00	3.9	24804	-DO
04	Filtered tank	5	19	68.58	75.00	4.4	22630	-DO

Therefore, a tender is being invited for water proofing treatment of all above referred RCC water storage tank for making it 100% water tightness. All tenderers are requested to visit the site physically, assess the quantum of work involved including dewatering, sludge removal, making the surface area dry through pedestal fans, artificial lighting as all tanks are covered from top with CAST – IN SITU RCC Roof Slab. All tenderers are requested to have tie up, technical collaborations with water proofing agency and their applicators like SIKKA, CICO, BASF, STP, PIDILITE, FOSROC etc and others having experience in this field.

# TECHNICAL CONDITIONS OF CONTRACT (TCC)

## Chapter - II : Scope of Works and Technical Specifications

---

The Scope of works include as follows:- RCC Water Storage Tanks should have water proofing treatment in priority as decided by BHEL Site In charge (PIPAVAV).

Clarified Water Storage Tank:

Dewatering: Dewatering of the tank including arrangement of suitable capacity of dewatering pumps along with pipe hose.

Sludge: Collection and removal of sludge at location provided by BHEL/Customer including transportation like tractors, labours etc complete.

Cleaning and dryness of surface area: Bidder has to clean the surface area properly including chipping of loose concrete/mortars and make it dry by arranging suitable pedestal fans, artificial lighting like installation of sufficient numbers of halogens, engaging sufficient numbers of labours for cleaning etc. complete. Entire surface area should be prepared and made ready to receive water proofing treatment.

Providing and applying water proofing treatment inside floor & wall in RC water tanks of large size (as per drawings attached). The tank is having expansion joint, construction joints, as per drawing attached. The gap between twin columns at expansion joint is to be suitably treated. Bidders has to complete the work including supplying of material, labour, tools & tackles and all work at site complete to give a leak proof water tank with a guarantee of performance of atleast 10 years. 95% of payment may be released after completion & testing of each tank and furnishing of guarantee, etc. Part payment of total cost as per payment terms may be made against completion of all works of each tank and the cost breakup may be decided on prorata basis of internal surface area of base. 5% payment will be released as per GCC clause no. 2.22 after one year of completion of work and successful testing of RC tank against leakage. Bidder has to familiarise as per actual condition of RC tank already constructed at site and rates quoted will include all treatments envisaged for complete leak proofing over actual condition of tank. No additional/extra item will be admissible lateron.

- (i) Expansion joint Cutting, grooving (1V:2H minimum 25mm deep), removal of deteriorated polysulphide sealant/old materials as required, preparation of surface , repairing/grouting of expansion joint with high strength mortar or polymer/epoxy based cement sand or equivalent with a layer of backer rod followed by appropriate primer on both vertical face of groove and sealant (applied with suitable pressure device) followed by suitable adhesive to cover the joint with elastomeric/flexible sheet (min 200mm wide & 2mm thk.) or equivalent tape all complete (measurement in Rm on one side) .
- (ii) Construction joint/Cracks (4mm and above) Cutting, grooving (V groove min 20mmx20mm), preparation of surface, nozzle grouting by fixing nozzle at suitable spacing along joint with high strength mortar or polymer/epoxy based cement sand or equivalent over suitable primer, curing, followed by final coats (applied with suitable pressure device) along the joint all complete (measurement in Rm on each face).

# TECHNICAL CONDITIONS OF CONTRACT (TCC)

## Chapter - II : Scope of Works and Technical Specifications

---

- (iii) Surface treatment (Floor) Preparation of surface followed by suitable polymer/epoxy based primer or crystalline with suitable mortar on floor with a final coat of screeding or tile flooring or equivalent to ensure finally a leak proof execution of work in hydro test. (Measurement in Sqm on exposed face) .
- (iv) Internal Surface treatment (wall) Preparation of internal surface followed by suitable polymer/epoxy based primer or crystalline etc to ensure finally a leak proof execution of work in hydro test. (Measurement in Sqm. on internal face) .

Please note that all the remaining water retaining RCC Tanks like Permeate, DM Clarified, Filter Tank will receive the same water proofing treatment as described above for Clarified Water Storage TANK.

### **2.0.2 Other Related Activities:**

Draw Construction Power & Water from Customer's given Point at one location inside the plant including all materials.

### **2.0.3 Field Quality Assurance:**

The contractor shall be responsible for day-to-day quality checks of water proofing material during the progress of work. All quality records and log sheets shall be maintained as per the requirement of BHEL/BHEL'S customer and as per field quality plan approved by BHEL/GPPCL. For this, contractor shall either establish their own field quality lab or have tie-up with approved lab by BHEL in/outside of the plant if so required by BHEL.

### **2.0.10 PROCUREMENT OF MATERIALS BY SUCCESSFUL CONTRACTORS AND TESTING:**

Material required for the entire job (other than issued by BHEL as explained above) like cement, sand, aggregates, WATERPROOFING MATERIAL etc. have to be arranged by the contractor, except those specifically indicated as BHEL scope of supply. BHEL reserves the right to reject any material not found satisfactory.

Contractor shall produce manufacturer's test certificate (MTC) for, water proofing material, cement for every batch of manufacturing along with each consignment brought to the site. Apart from the above, it shall be the responsibility of contractor to get the testing of waterproofing material, or any other materials procured from outside laboratory approved by BHEL/PIPAVAV to ascertain the quality if insisted by BHEL/BHEL's customer.

Rate quoted shall be inclusive of all such contingencies and no additional payment shall be made on this account. For this purpose, sample shall be collected at site in presence of BHEL/BHEL customer's representative. PVC is not applicable for this contract

# TECHNICAL CONDITIONS OF CONTRACT (TCC)

## Chapter - II : Scope of Works and Technical Specifications

---

Bidders are requested to have pre-bid visit/ inspection of site to make them fully acquainted with the site situation & nature of job. No claim shall be entertained at later date on account of non-familiarization of site condition. Bidders may fix up their site visit in consultation with construction manager BHEL site office PIPAVAV. Name, address & contact point of site is as below:

SHRIM L DEWANAGAN (CONSTRUCTION MANAGER)  
BHEL SITE OFFICE – 2X350 MW CCPP PIPAVAV  
MOB: 9422805237, PH: 02641291507  
E-MAIL ID: [mld@bhelswr.co.in](mailto:mld@bhelswr.co.in)

**TECHNICAL CONDITIONS OF CONTRACT (TCC)**  
**Chapter – III : Facilities in the scope of Contractor/BHEL**

---

Sl.No.	Description PART I	Scope / to be taken care by		Remarks
		BHEL	Bidder	
3.1	ESTABLISHMENT			
3.1.1	FOR CONSTRUCTION PURPOSE:			
a	Open space for office (as per availability)	Yes		Location will be finalized after joint survey with owner
b	Open space for storage (as per availability)	Yes		Location will be finalized after joint survey with owner
c	Construction of bidder's office, canteen and storage building including supply of materials and other services		Yes	
d	Bidder's all office equipments, office / store / canteen consumables		Yes	
e	Canteen facilities for the bidder's staff, supervisors and engineers etc		Yes	
f	Fire fighting equipments like buckets, extinguishers etc		Yes	
g	Fencing of storage area, office, canteen etc of the bidder		Yes	
3.1.2	FOR LIVING PURPOSES OF THE BIDDER			
a	Open space for labour colony (as per availability)		Yes	Contractor has to make his own arrangements for space, shelter and transportation of labors as per their requirement.
b	Labour Colony with internal roads, sanitation, complying with statutory requirements		Yes	
3.2.0	ELECTRICITY			
3.2.1	Electricity for construction purposes 3 Phase 415/440 V (To be specified whether chargeable or free)			

**TECHNICAL CONDITIONS OF CONTRACT (TCC)**  
**Chapter – III : Facilities in the scope of Contractor/BHEL**

Sl.No.	Description PART I	Scope / to be taken care by		Remarks
		BHEL	Bidder	
a	Single point source	Yes		Free. At a distance of 500m from site (distance is only estimated, It may vary up to any extent depending on site condition). In case of power failure due to maintenance or any reason, contractor shall have to arrange the same at his own expenses through DG set etc. to ensure progress of work.
b	Further distribution including all materials, Energy Meter, Protection devices and its service		Yes	
c	Duties and deposits including statutory clearances if applicable		Yes	
3.2.2	Electricity for the office, stores, canteen etc of the bidder(to be specified whether chargeable or free)			Free at an available distance. In case of non-availability of power due to any reason from customer point, contractor shall have to arrange the same at his own expenses through DG set.
a	Single point source	Yes		
b	Further distribution including all materials, Energy Meter, Protection devices and its service		Yes	
c	Duties and deposits including statutory clearances if applicable		Yes	
3.2.3	Electricity for living accommodation of the bidder's staff, engineers, supervisors etc		Yes	Contractor has to make his own arrangement.
a	Single point source		Yes	
b	Further distribution including all materials, Energy Meter, Protection devices and its service		Yes	

**TECHNICAL CONDITIONS OF CONTRACT (TCC)**  
**Chapter – III : Facilities in the scope of Contractor/BHEL**

Sl.No.	Description PART I	Scope / to be taken care by		Remarks
		BHEL	Bidder	
c	Duties and deposits including statutory clearances if applicable		Yes	
3.3.0	WATER SUPPLY			
3.3.1	For construction purposes:(to be specified whether chargeable or free)			
a	Making the water available at single point	Yes		Free, At a distance of 500M from site. In Case Of non-availability of construction water due to Maintenance or any reason from customer point, contractor shall have to arrange construction water at his own expenses.
b	Further distribution as per the requirement of work including supply of materials and execution		Yes	
3.3.2	Water supply for bidder's office, stores, canteen etc			
a	Making the water available at single point	Yes		Free, At a distance of 500M from site.In Case of non-availability of construction water due to Maintenance or any reason from customer point, contractor shall have to arrange construction water at his own expenses.
b	Further distribution as per the requirement of work including supply of materials and execution		Yes	
3.3.3	Water supply for Living Purpose			Contractor has to make his own arrangement.
a	Making the water available at single point		Yes	
b	Further distribution as per the requirement of work including supply of materials and execution		Yes	
3.4.0	LIGHTING			

**TECHNICAL CONDITIONS OF CONTRACT (TCC)**  
**Chapter – III : Facilities in the scope of Contractor/BHEL**

---

Sl.No.	Description PART I	Scope / to be taken care by		Remarks
		BHEL	Bidder	
a	For construction work (supply of all the necessary materials) At office/storage area At the preassembly area At the construction site /area		Yes	
b	For construction work (execution of the lighting work/ arrangements) 1. At office/storage area 2. At the preassembly area At the construction site /area		Yes	
c	Providing the necessary consumables like bulbs, switches, etc during the course of project work		Yes	
d	Lighting for the living purposes of the bidder at the colony / quarters		Yes	
3.5.0	COMMUNICATION FACILITIES FOR SITE OPERATIONS OF THE BIDDER			
a	Telephone, fax, internet, intranet, e-mail etc.		Yes	
3.6.0	COMPRESSED AIR wherever required for the work		Yes	
3.7.0	Demobilization of all the above facilities		YES	
3.8.0	TRANSPORTATION			
a	For site personnel of the bidder		Yes	
b	For bidder's equipments and consumables (T&P, Consumables etc)		Yes	

**TECHNICAL CONDITIONS OF CONTRACT (TCC)**  
**Chapter – IV: Tentative list of T&Ps and MMEs to be deployed by Contractor**

---

**A: TOOL & PLANTS**

All necessary tools required for waterproofing of RCC Tank are to be arranged by Contractor.

**B: MEASURING AND MONITORING DEVICES (MMD):**

AS PER REQUIREMENT TO BE FINALIZED AT SITE.

**NOTE:**

This above list is only indicative and neither exhaustive nor limiting. Quantities indicated above are only the minimum required. Contractor shall deploy all necessary T&P to meet the schedules & as prescribed by BHEL engineer and required for completion of work.

**BHEL WILL NOT PROVIDE ANY T & P's FOR THIS WORK**

**TECHNICAL CONDITIONS OF CONTRACT (TCC)**  
**Chapter – V: T&Ps and MMEs to be deployed by BHEL on sharing  
basis**

---

**BHEL WILL NOT PROVIDE ANY T&Ps FOR THIS WORK.**

# TECHNICAL CONDITIONS OF CONTRACT (TCC)

## Chapter – VI: Time Schedule

---

### TIME SCHEDULE & MOBILIZATION

#### 6.1.1 INITIAL MOBILIZATION AND TENTATIVE SCHEDULE

Contractor shall reach site, make his site establishment and be ready to commence the work within two weeks from the date of fax Letter of Intent or as per directions of Construction Manager/ Project Manager of BHEL.

The contractor has to subsequently augment his resources in such a manner that the entire works are completed within **4 (Four) months from start of contract period** in a manner required by BHEL to match with the project schedule.

THE OVERALL CONTRACT PERIOD SHALL of **4 (Four) months**.

#### 6.1.2 COMMENCEMENT OF CONTRACT PERIOD

The date of commencement of contract period shall be the mutually agreed date between the bidder and BHEL engineer to start the work. In case of discrepancy the decision of BHEL engineer is final.

#### 6.1.3

In order to meet above schedule and other intermediate targets/activities as set by BHEL Engineer In charge at site, to meet customer requirements/project schedule, contractor shall arrange all necessary resources and work force in consultation with BHEL engineer at site to undertake works concurrently in all possible fronts as made available to contractor.

Contractor shall note that individual milestones as above shall be achieved as per schedule furnished above. The date of start will be one week from LOI.

The contractor shall reach site and establish his site office and mobilize necessary resources well in advance of actual commencement of the contract time schedule as per directions of BHEL engineer.

The contractor shall complete all the work in the scope of this contract within the contract period.

# TECHNICAL CONDITIONS OF CONTRACT (TCC)

## Chapter – VII: TERMS OF PAYMENT

---

### 7.00 TERMS OF PAYMENT

#### 7.0.1

The contractor shall submit his monthly on account bills with all the details required by BHEL on specified date every month covering progress of work in all respects and areas from the 25th of previous calendar month to 24th of the current month.

#### 7.0.2

General conditions of contract shall be referred to as regards mode of payment, and measurement of the work completed.

#### 7.0.3

Release of payment in each running bill will be restricted to 95% of the value of work admitted, as per the percentage break-up for the stage of work completion stipulated vide clauses hereinafter.

The 5% retention amount shall be released as per GCC clause no. 2.22. The workmanship guarantee period for this contract shall be 12 months from the date of completion of entire work as certified by BHEL

#### 7.0.4

The payment for running bills will normally be released within around 30 days of submission of running bill with measurement sheets. Contractor shall make his own arrangement for making payment of impending labour wages and other dues in the meanwhile.

#### 7.0.5

BHEL will release payment through Electronic Fund Transfer (EFT)/RTGS. In order to implement this system, the following details are to be furnished by the contractor pertaining to his bank accounts where proceeds will be transferred through BHEL's banker:

Name of the Company

Name of Bank

Name of Bank Branch

City/Place

Account Number

Account type

IFSC code of the Bank Branch

MICR Code of the Bank Branch

BHEL May Also Choose To Release Payment By Other Alternative Modes As Suitable.

# TECHNICAL CONDITIONS OF CONTRACT (TCC)

## Chapter – VII: TERMS OF PAYMENT

---

### 7.0.6 Progressive Payment For Civil

The percentage of payment for progressive completion of work in various categories of work shall be as under:

#### Civil Work

100% of Item Rate on Pro-Rata Basis against Monthly RA Bills.

The RA bill payment shall be made as per Cl no 10.0 of Chapter –X of SCC and as per CL NO: 2.6 of GCC

Extra/Additional Items Of Work:-

As Per GCC.

# SPECIAL CONDITIONS OF CONTRACT (SCC)

## CHAPTER IX –DRAWINGS

---

### **8.0 TAXES, DUTIES, LEVIES (Consolidated Rev 03 dated 09/04/2013)**

#### **8.1. For All types of works excepting works covered under sl no 8.2**

##### **8.1.1**

The contractor shall pay all (save the specific exclusions as enumerated in this contract) taxes, fees, license charges, deposits, duties, tools, royalty, commissions or other charges which may be levied on the input goods & services consumed and output goods & services delivered in course of his operations in executing the contract. In case BHEL is forced to pay any of such taxes, BHEL shall have the right to recover the same from his bills or otherwise as deemed fit.

**However, provisions regarding Service Tax and Value Added Tax (VAT) on output services and goods shall be as per following clauses.**

##### **8.1.2 Service Tax & Cess on Service Tax**

Contractor's price/rates shall be exclusive of Service Tax and Cess on Services. In case, it becomes mandatory for the contractor under provisions of relevant act/law to collect the Service Tax & Cess from BHEL and pay the same to the concerned tax authorities, such applicable amount will be paid by BHEL at the prevailing Service Tax Rate (presently 12.36 %) on the admitted bill value.

**Contractor shall submit to BHEL documentary evidence of Service Tax registration certificate specifying name of services covered under this contract. Contractor shall submit serially numbered Service Tax and Cess Invoice, signed by him or a person authorized by him in respect of taxable service provided, and shall contain the following, namely,**

- 1. The name, address and the registration number of the contractor,**
- 2. The name and address of the party receiving taxable service,**
- 3. Description, classification and value of taxable service provided and,**
- 4. The service tax payable thereon.**

**All the Four conditions shall be fulfilled in the invoice before release of service tax payment.**

**Wherever, more than one route/option are available for discharge of service tax liability under a particular service, (e.g. "works contract Service"), contractor shall obtain prior written consent from BHEL site before billing the amount towards Service Tax.**

##### **8.1.3 VAT (Sales Tax /WCT)**

As regards Value Added Tax (VAT)/CST on transfer of property in goods involved in Works Contract (previously known as Works Contract Tax) applicable as per local laws, the price quoted by the contractor shall be inclusive of the same and in no case input or output VAT/CST will be reimbursed extra.

In any case the Contractor shall register himself with the respective Sales Tax authorities of the state and submit proof of such registration to BHEL along with the first RA bill. Contractor will submit all the details of VAT/CST paid for the contract in the prescribed format of the respective state VAT laws. Also, the contractor will issue the tax Invoices to BHEL as per the Tax laws of respective state on monthly basis. Contractor shall also be required to furnish to BHEL necessary proof of VAT remittance on monthly basis.

# SPECIAL CONDITIONS OF CONTRACT (SCC)

## CHAPTER IX –DRAWINGS

---

Deduction of tax at source shall be made as per the provisions of law and is to be construed as an advance tax paid by the contractor and no reimbursement thereof will be made.

Further, if BHEL, at the instance of customer or otherwise adopts the specific route for discharging output VAT liability itself, benefit of the reduction in liability of the contractor will be passed on to BHEL.

In case, BHEL is forced to pay any VAT liability on behalf of contractor, the same will be recovered from contractor's bill or otherwise as deemed fit

### 8.2 'Enabling Works'

The contractor shall pay all (save the specific exclusions as enumerated in this contract) taxes, fees, license charges, deposits, duties, tools, royalty, commissions or other charges which may be levied on the input goods & services consumed and output goods & services delivered in course of his operations in executing the contract. In case BHEL is forced to pay any of such taxes, BHEL shall have the right to recover the same from his bills or otherwise as deemed fit. ( **i.e. rates quoted by bidder shall be inclusive of Service Tax, VAT/WCT and all other taxes and duties** )

However, Since the proposed work is in the nature of 'Works Contract service' as per Service tax law, Hence, For non-corporate contractors being Individual, HUF, Proprietary Firm, Partnership Firm or Association of Persons (AOP), BHEL shall recover the applicable Service Tax under reverse charge mechanism from the contractor and remit the same with the Government as per the provisions of Law. Necessary advice/confirmation of remittance shall be issued to the contractor. The contractor shall not be eligible for any refund/reimbursement of such service tax from BHEL. It shall be the responsibility of the contractor to submit proper invoice giving all the requisite details as per Service Tax Law for the determination of the service tax liability of BHEL under reverse charge mechanism. BHEL reserves the right to determine such liability based on the invoice submitted by the contractor or otherwise independently and remittance of the same with the Government.

### 8.3 New Taxes/Levies

In case the Government imposes any new levy/tax on the output service/ goods/work after award of the contract, the same shall be reimbursed by BHEL at actual.

In case any new tax/levy/duty etc. becomes applicable after the date of Bidder's offer, the Bidder/Contractor must convey its impact on his price duly substantiated by documentary evidence in support of the same **before opening of Price Bid**. Claim for any such impact after opening the Price Bid will not be considered by BHEL for reimbursement of tax or reassessment of offer.

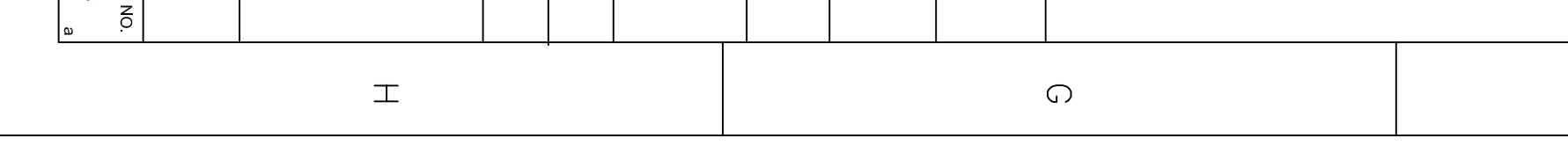
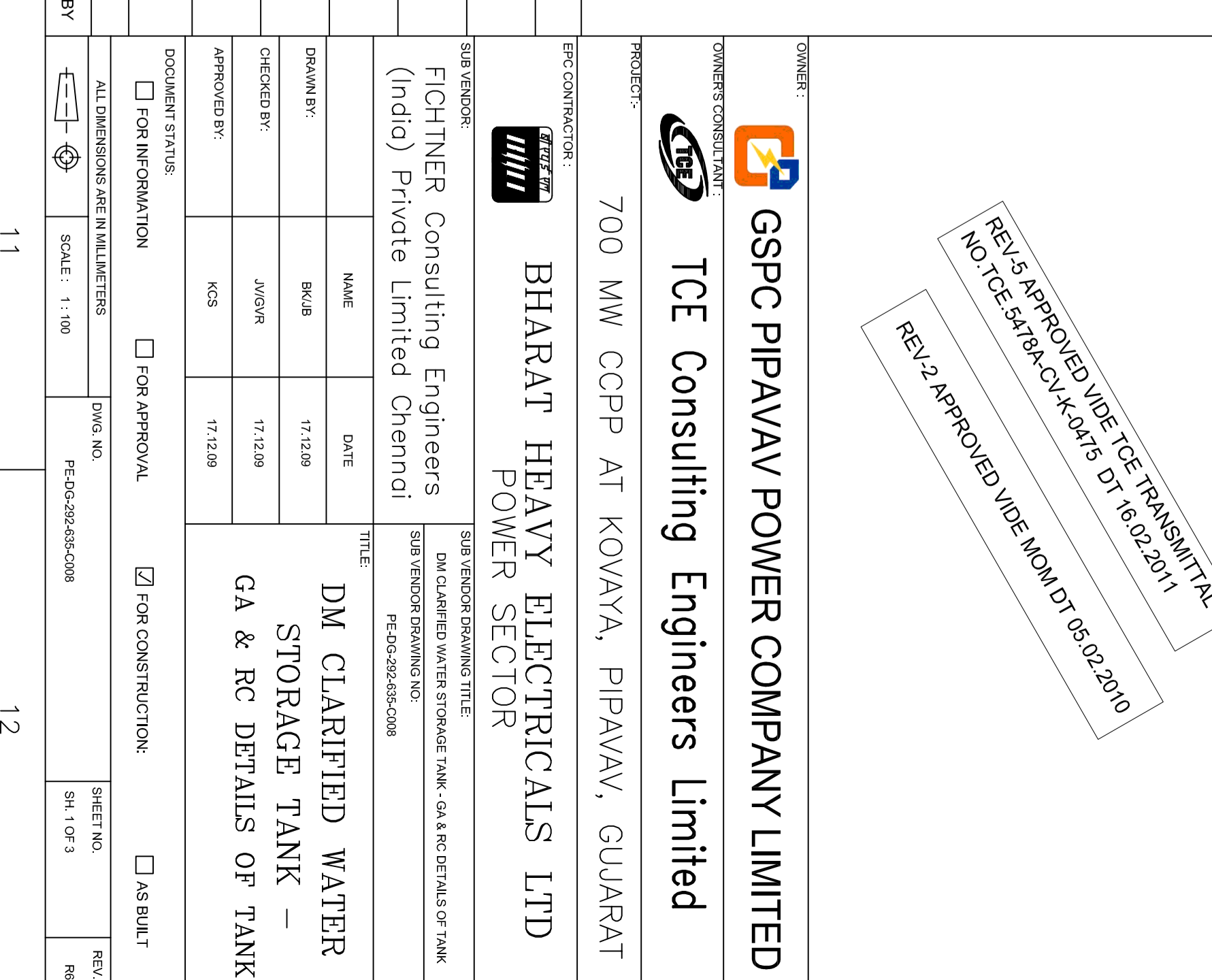
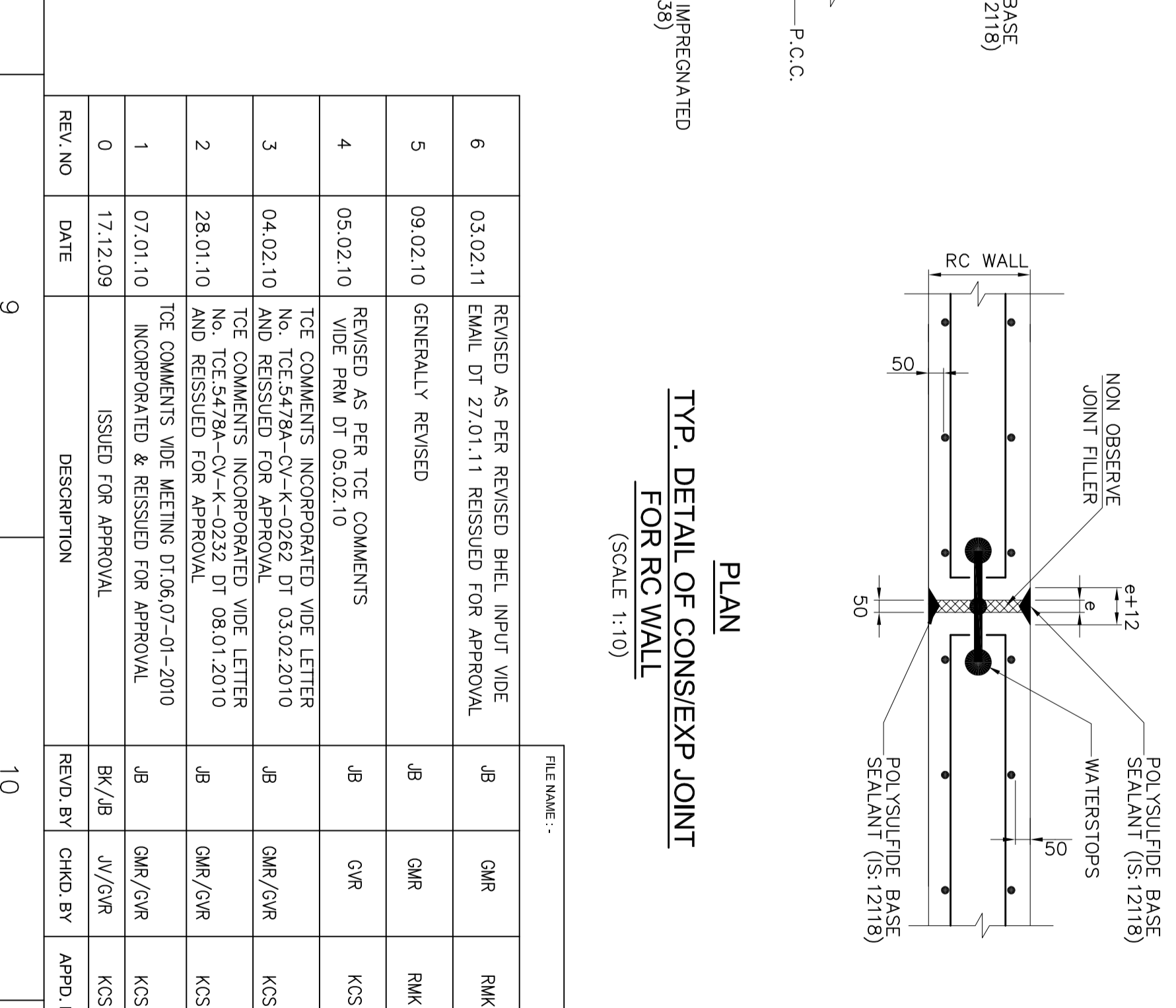
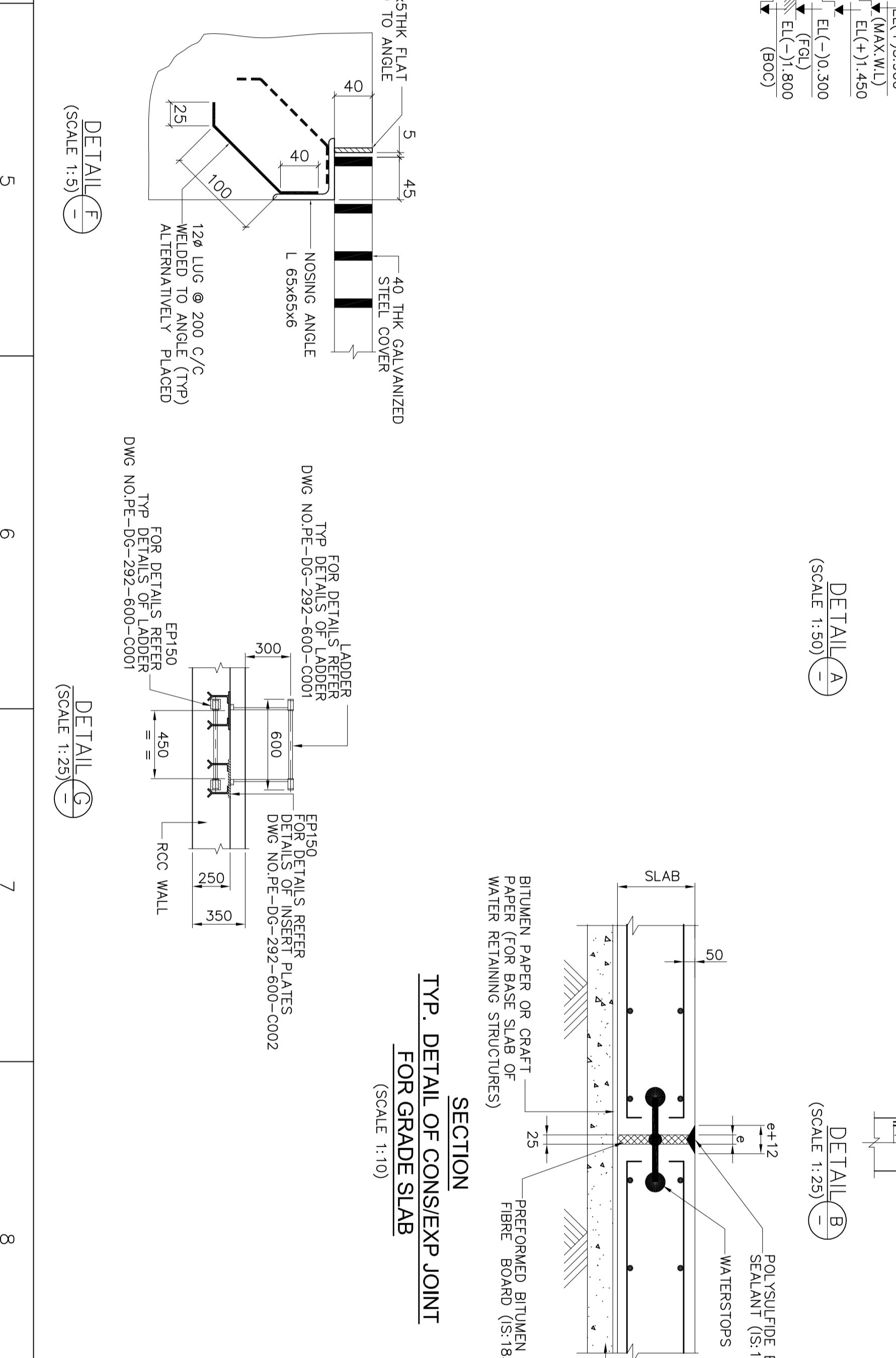
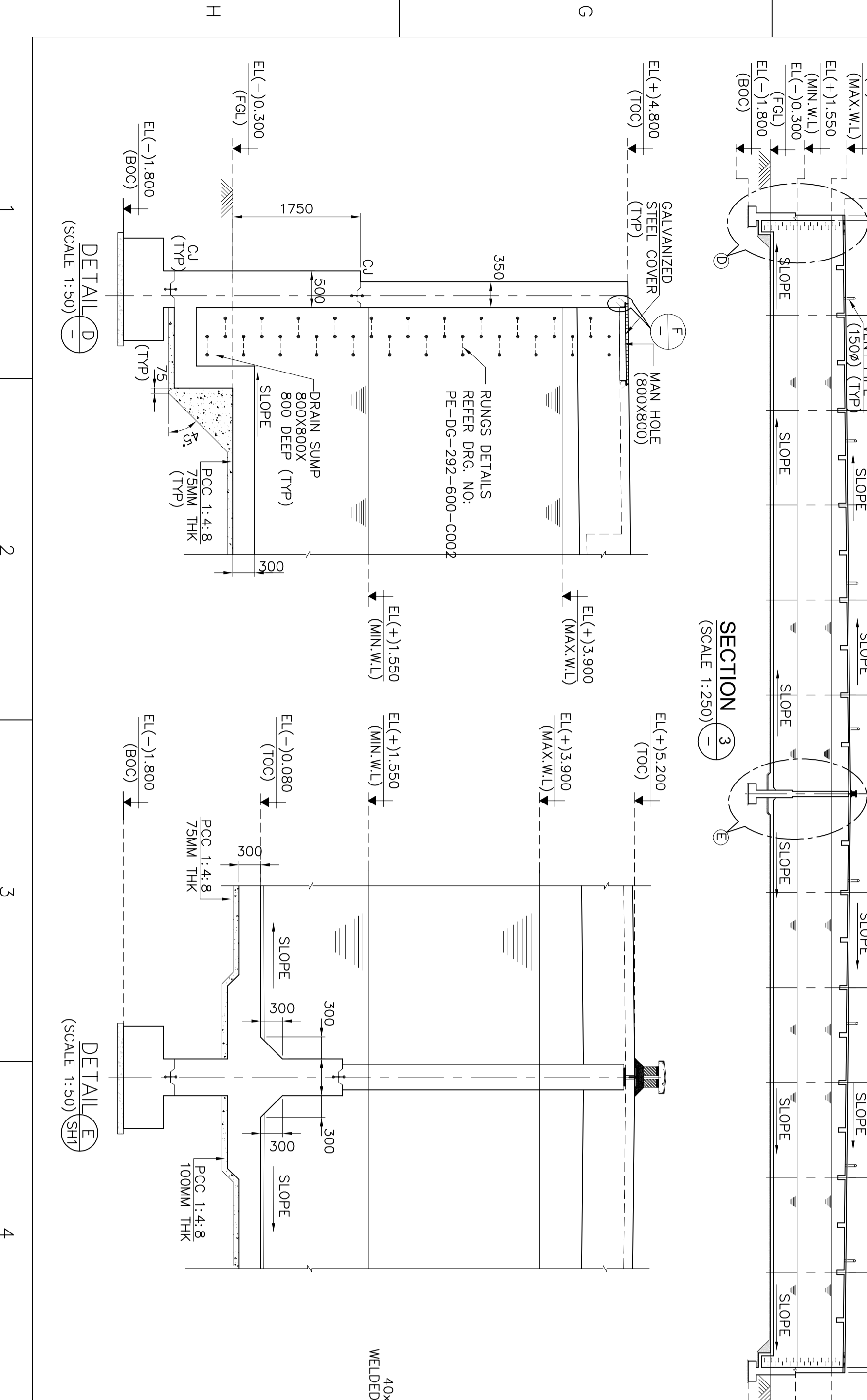
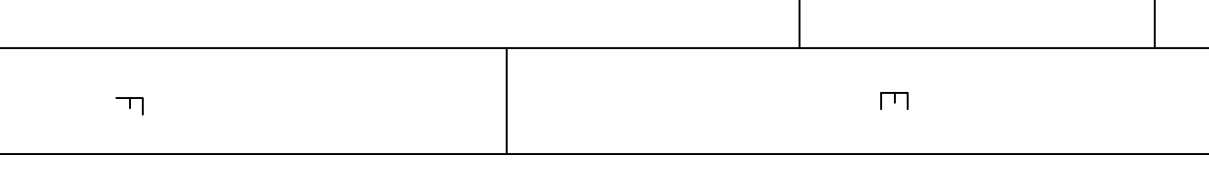
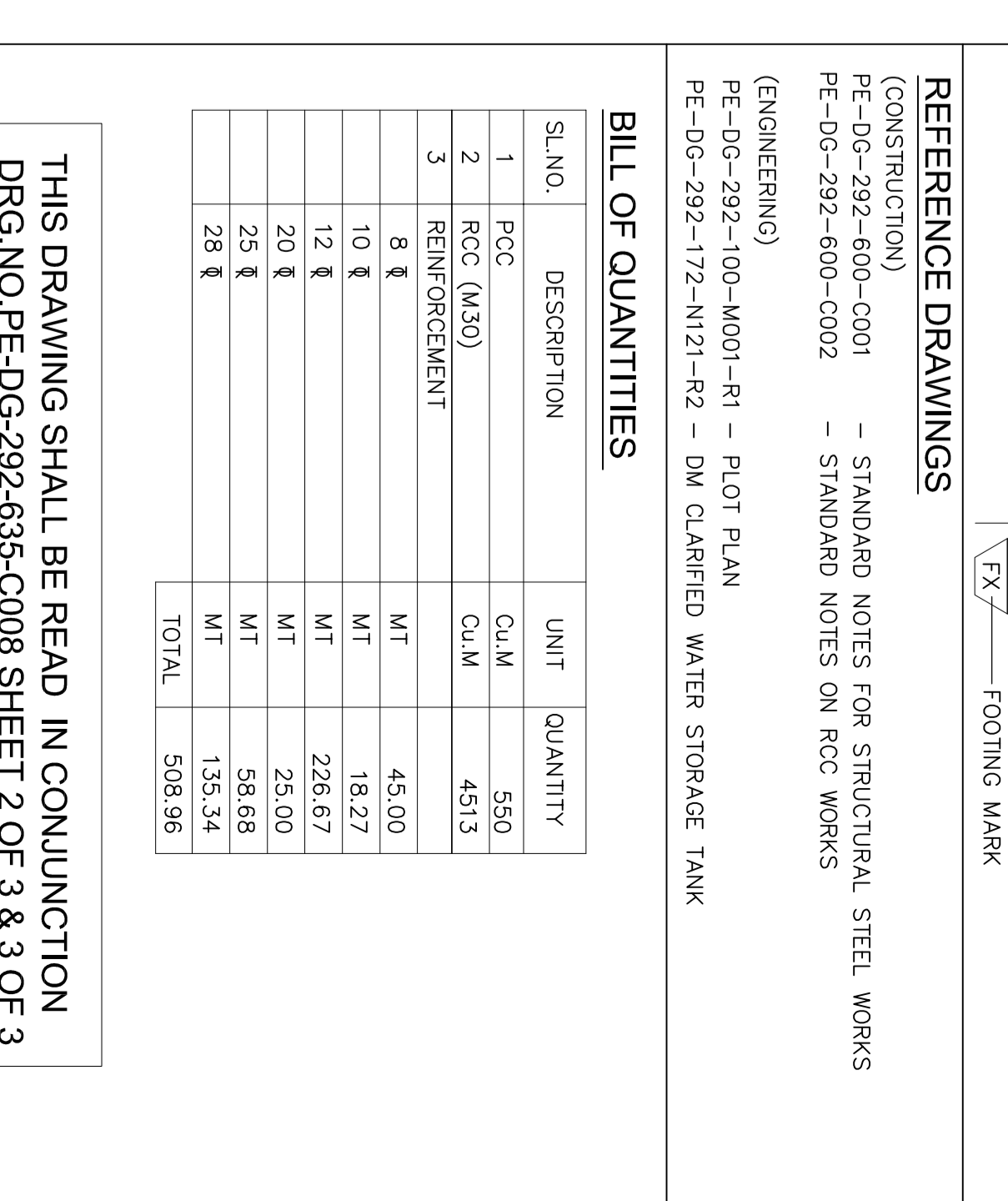
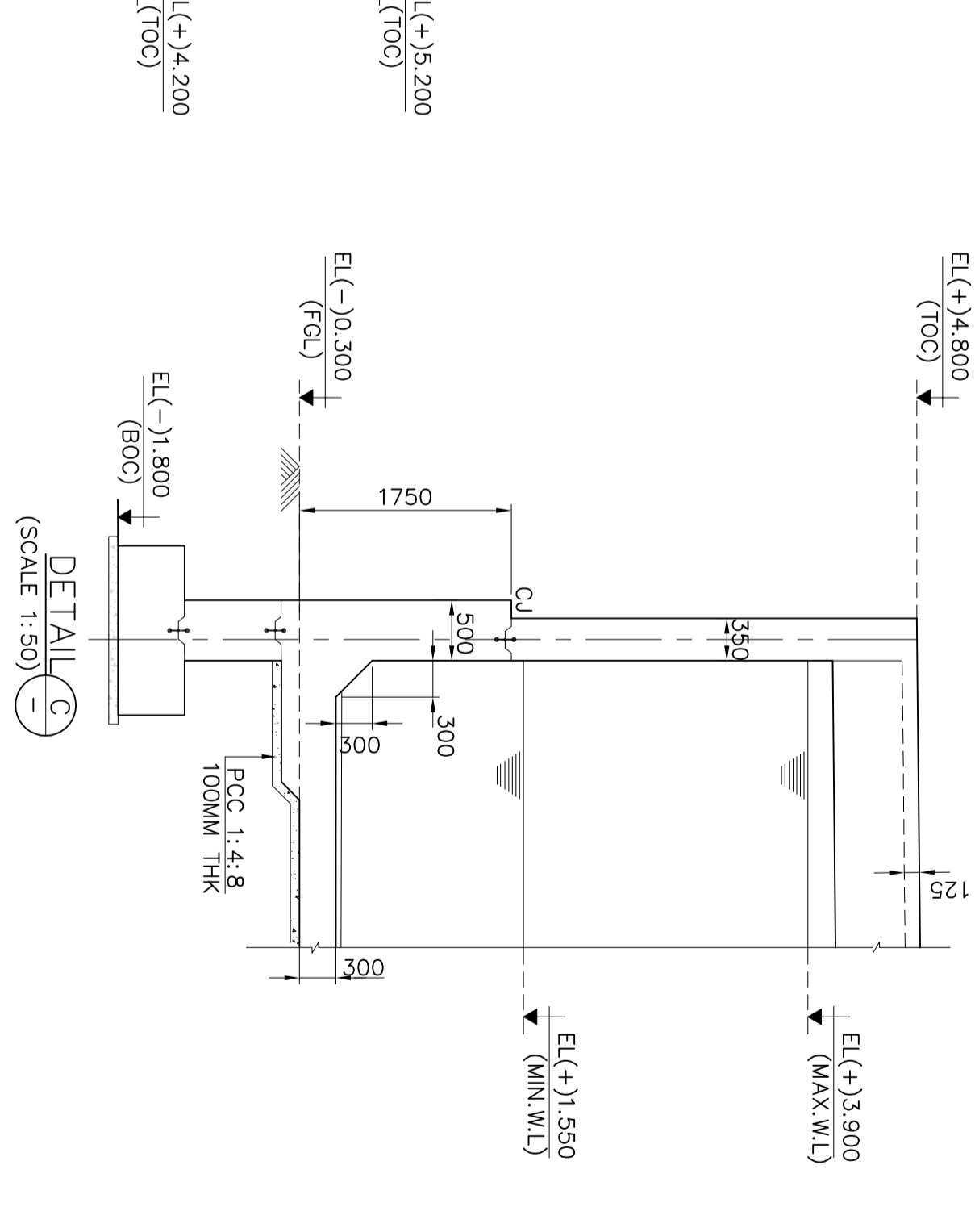
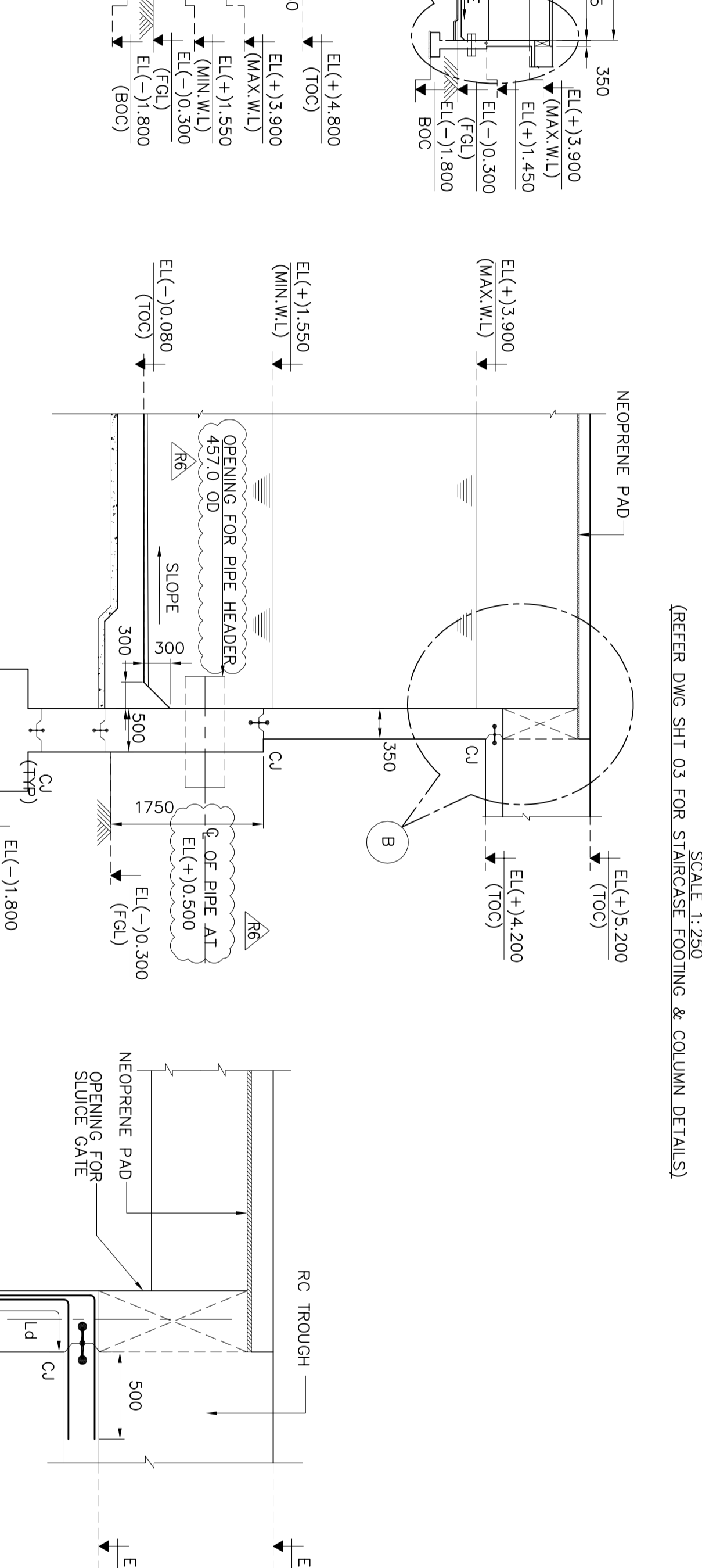
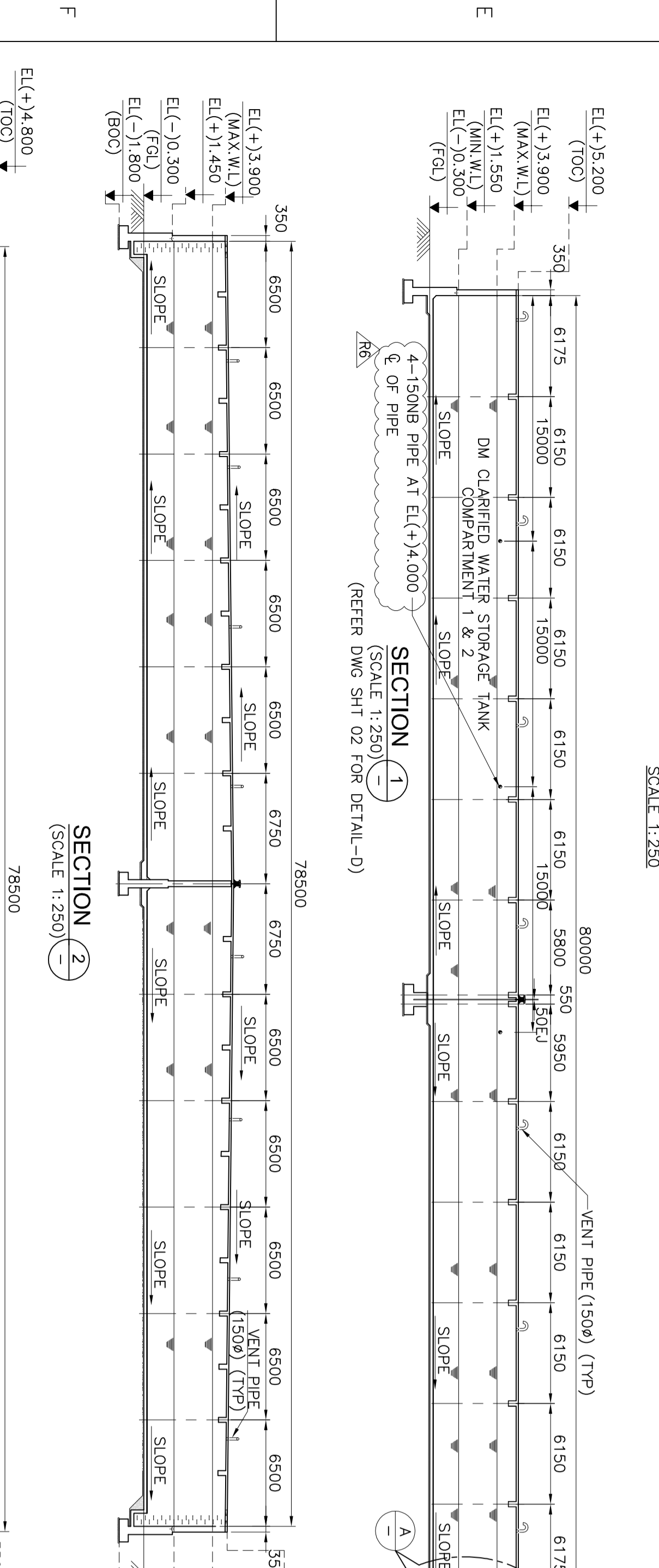
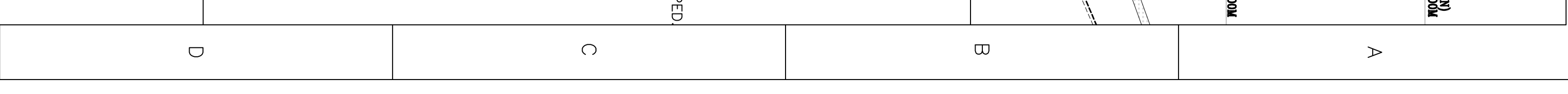
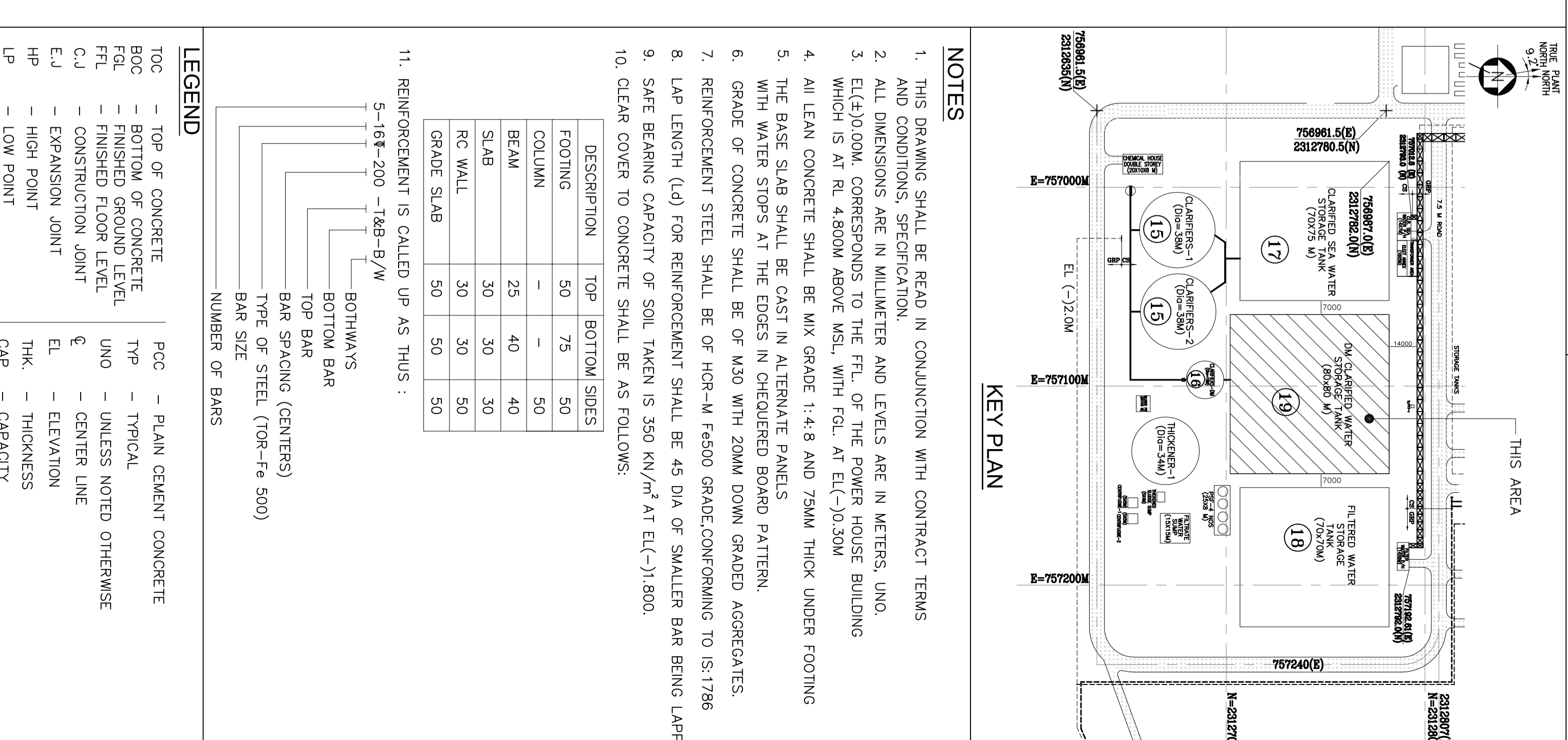
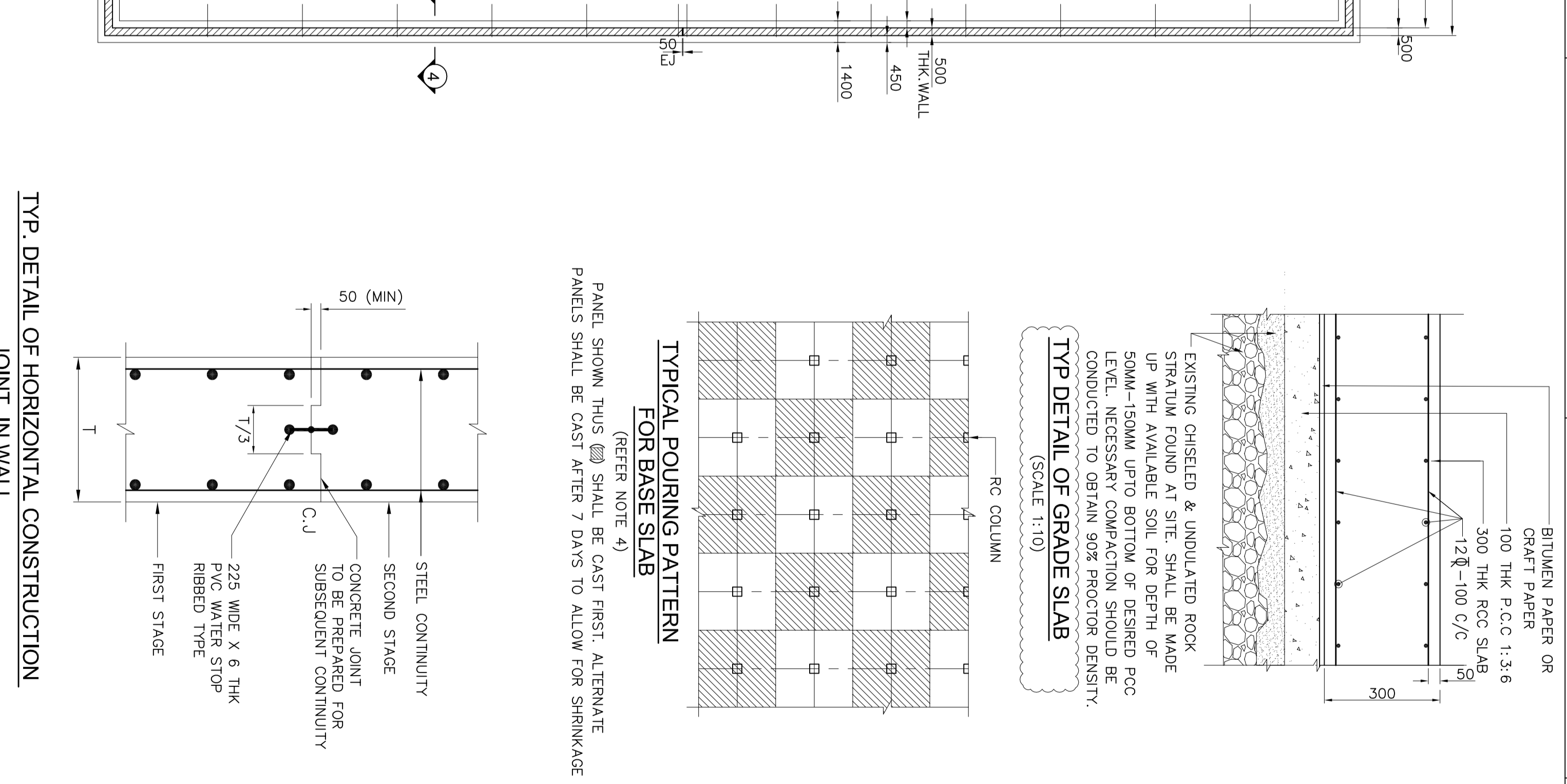
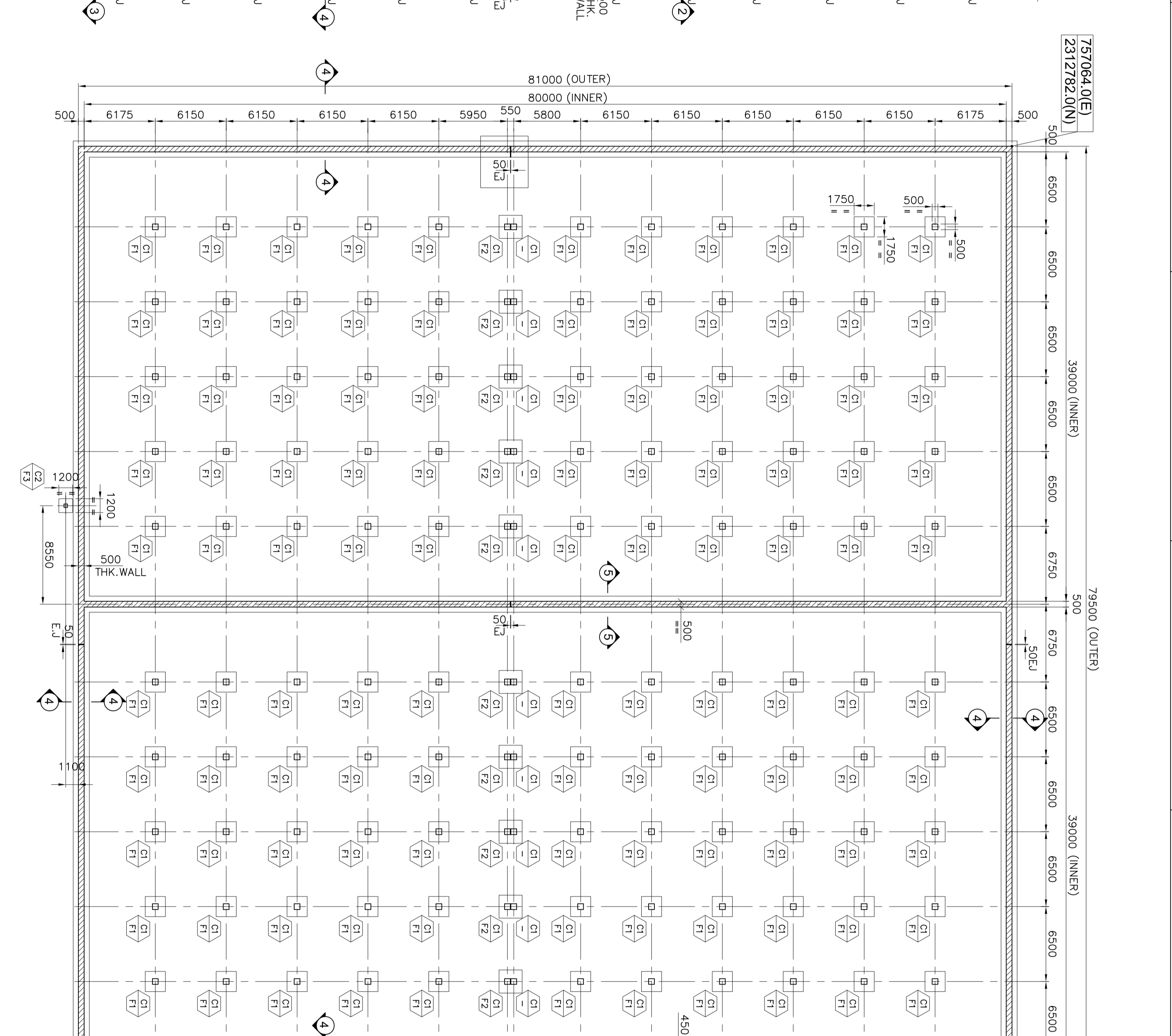
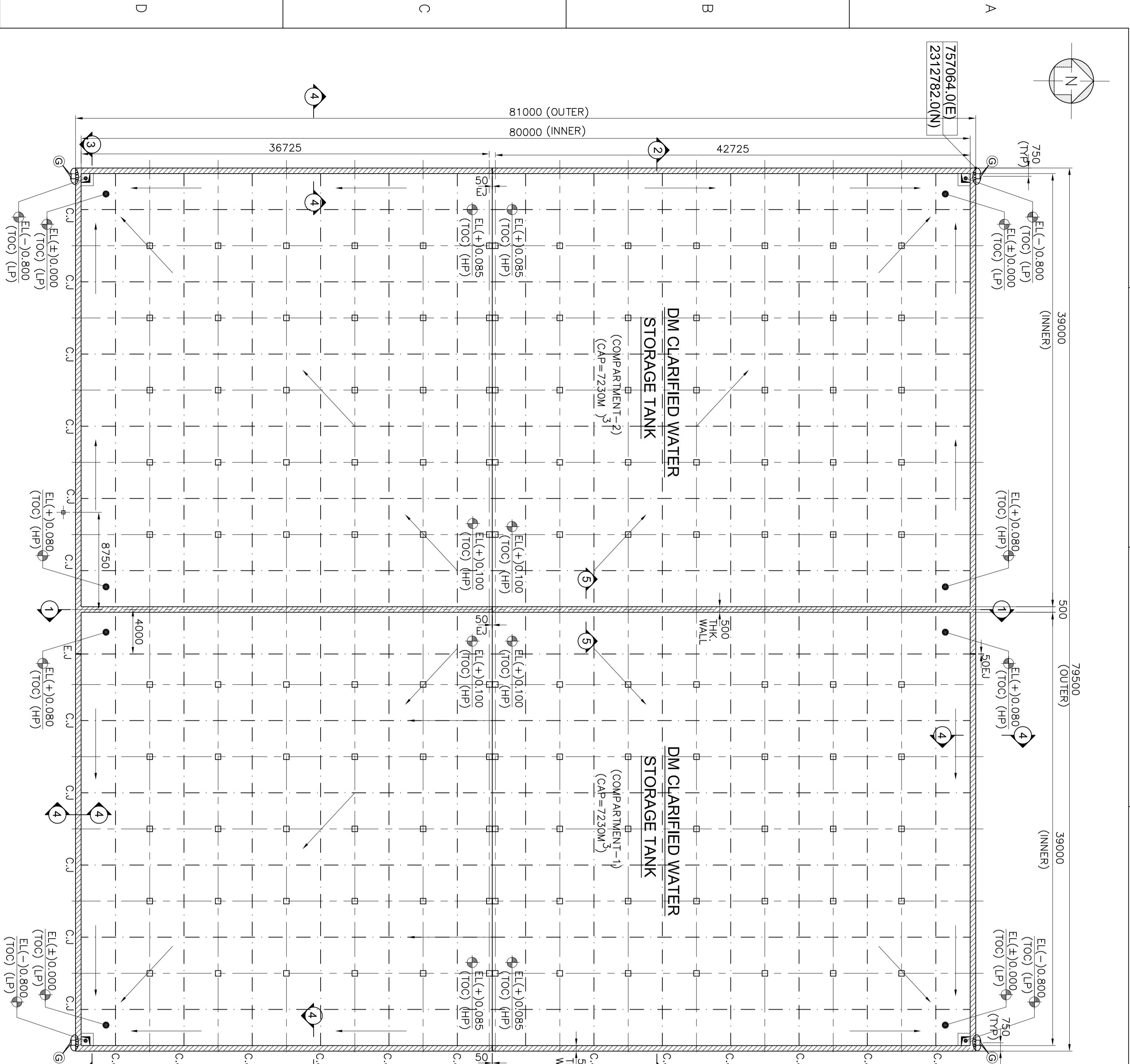
No reimbursement/recovery on account of increase/reduction in the rate of taxes, levies, duties etc. on input goods/services/work shall be made. Such impact shall be taken care of by the Price Variation/Adjustment Clause (PVC) if any. In case PVC is not applicable for the contract, Bidder has to make his own assessment of the impact of future variation if any, in rates of taxes/duties/ levies etc. in his price bid.

SPECIAL CONDITIONS OF CONTRACT (SCC)  
CHAPTER IX –DRAWINGS

---

**Refer the enclosed Drawings of various Tanks**





REV. NO.	DATE	DESCRIPTION	BY	CHKD.	APPD.
0	17.12.09	ISSUED FOR APPROVAL	AB	JY/SR	KCS
1	07.01.10	ISSUED FOR APPROVAL	AB	QAR/GR	KCS
2	28.01.10	ISSUED FOR APPROVAL	AB	QAR/GR	KCS
3	04.02.10	ISSUED FOR APPROVAL	AB	QAR/GR	KCS
4	05.02.10	ISSUED FOR APPROVAL	AB	QAR/GR	KCS
5	09.02.10	ISSUED FOR APPROVAL	AB	QAR/GR	BAK
6	02.02.11	ISSUED FOR APPROVAL	AB	QAR/GR	BAK

REV. NO.	DATE	DESCRIPTION	BY	CHKD.	APPD.
0	17.12.09	ISSUED FOR APPROVAL	AB	JY/SR	KCS
1	07.01.10	ISSUED FOR APPROVAL	AB	QAR/GR	KCS
2	28.01.10	ISSUED FOR APPROVAL	AB	QAR/GR	KCS
3	04.02.10	ISSUED FOR APPROVAL	AB	QAR/GR	KCS
4	05.02.10	ISSUED FOR APPROVAL	AB	QAR/GR	KCS
5	09.02.10	ISSUED FOR APPROVAL	AB	QAR/GR	BAK
6	02.02.11	ISSUED FOR APPROVAL	AB	QAR/GR	BAK

REV. NO.	DATE	DESCRIPTION	BY	CHKD.	APPD.
0	17.12.09	ISSUED FOR APPROVAL	AB	JY/SR	KCS
1	07.01.10	ISSUED FOR APPROVAL	AB	QAR/GR	KCS
2	28.01.10	ISSUED FOR APPROVAL	AB	QAR/GR	KCS
3	04.02.10	ISSUED FOR APPROVAL	AB	QAR/GR	KCS
4	05.02.10	ISSUED FOR APPROVAL	AB	QAR/GR	KCS
5	09.02.10	ISSUED FOR APPROVAL	AB	QAR/GR	BAK
6	02.02.11	ISSUED FOR APPROVAL	AB	QAR/GR	BAK

REV. NO.	DATE	DESCRIPTION	BY	CHKD.	APPD.
0	17.12.09	ISSUED FOR APPROVAL	AB	JY/SR	KCS
1	07.01.10	ISSUED FOR APPROVAL	AB	QAR/GR	KCS
2	28.01.10	ISSUED FOR APPROVAL	AB	QAR/GR	KCS
3	04.02.10	ISSUED FOR APPROVAL	AB	QAR/GR	KCS
4	05.02.10	ISSUED FOR APPROVAL	AB	QAR/GR	KCS
5	09.02.10	ISSUED FOR APPROVAL	AB	QAR/GR	BAK
6	02.02.11	ISSUED FOR APPROVAL	AB	QAR/GR	BAK

REV. NO.	DATE	DESCRIPTION	BY	CHKD.	APPD.
0	17.12.09	ISSUED FOR APPROVAL	AB	JY/SR	KCS
1	07.01.10	ISSUED FOR APPROVAL	AB	QAR/GR	KCS
2	28.01.10	ISSUED FOR APPROVAL	AB	QAR/GR	KCS
3	04.02.10	ISSUED FOR APPROVAL	AB	QAR/GR	KCS
4	05.02.10	ISSUED FOR APPROVAL	AB	QAR/GR	KCS
5	09.02.10	ISSUED FOR APPROVAL	AB	QAR/GR	BAK
6	02.02.11	ISSUED FOR APPROVAL	AB	QAR/GR	BAK

REV. NO.	DATE	DESCRIPTION	BY	CHKD.	APPD.
0	17.12.09	ISSUED FOR APPROVAL	AB	JY/SR	KCS
1	07.01.10	ISSUED FOR APPROVAL	AB	QAR/GR	KCS
2	28.01.10	ISSUED FOR APPROVAL	AB	QAR/GR	KCS
3	04.02.10	ISSUED FOR APPROVAL	AB	QAR/GR	KCS
4	05.02.10	ISSUED FOR APPROVAL	AB	QAR/GR	KCS
5	09.02.10	ISSUED FOR APPROVAL	AB	QAR/GR	BAK
6	02.02.11	ISSUED FOR APPROVAL	AB	QAR/GR	BAK

REV. NO.	DATE	DESCRIPTION	BY	CHKD.	APPD.
0	17.12.09	ISSUED FOR APPROVAL	AB	JY/SR	KCS
1	07.01.10	ISSUED FOR APPROVAL	AB	QAR/GR	KCS
2	28.01.10	ISSUED FOR APPROVAL	AB	QAR/GR	KCS
3	04.02.10	ISSUED FOR APPROVAL	AB	QAR/GR	KCS
4	05.02.10	ISSUED FOR APPROVAL	AB	QAR/GR	KCS
5	09.02.10	ISSUED FOR APPROVAL	AB	QAR/GR	BAK
6	02.02.11	ISSUED FOR APPROVAL	AB	QAR/GR	BAK

REV. NO.	DATE	DESCRIPTION	BY	CHKD.	APPD.
0	17.12.09	ISSUED FOR APPROVAL	AB	JY/SR	KCS
1	07.01.10	ISSUED FOR APPROVAL	AB	QAR/GR	KCS
2	28.01.10	ISSUED FOR APPROVAL	AB	QAR/GR	KCS
3	04.02.10	ISSUED FOR APPROVAL	AB	QAR/GR	KCS
4	05.02.10	ISSUED FOR APPROVAL	AB	QAR/GR	KCS
5	09.02.10	ISSUED FOR APPROVAL	AB	QAR/GR	BAK
6	02.02.11	ISSUED FOR APPROVAL	AB	QAR/GR	BAK

REV. NO.	DATE	DESCRIPTION	BY	CHKD.	APPD.
0	17.12.09	ISSUED FOR APPROVAL	AB	JY/SR	KCS
1	07.01.10	ISSUED FOR APPROVAL	AB	QAR/GR	KCS
2	28.01.10	ISSUED FOR APPROVAL	AB	QAR/GR	KCS
3	04.02.10	ISSUED FOR APPROVAL	AB	QAR/GR	KCS
4	05.02.10	ISSUED FOR APPROVAL	AB	QAR/GR	KCS
5	09.02.10	ISSUED FOR APPROVAL	AB	QAR/GR	BAK
6	02.02.11	ISSUED FOR APPROVAL	AB	QAR/GR	BAK

REV. NO.	DATE	DESCRIPTION	BY	CHKD.	APPD.
0	17.12.09	ISSUED FOR APPROVAL	AB	JY/SR	KCS
1	07.01.10	ISSUED FOR APPROVAL	AB	QAR/GR	KCS
2	28.01.10	ISSUED FOR APPROVAL	AB	QAR/GR	KCS
3	04.02.10	ISSUED FOR APPROVAL	AB	QAR/GR	KCS
4	05.02.10	ISSUED FOR APPROVAL	AB	QAR/GR	KCS
5	09.02.10	ISSUED FOR APPROVAL	AB	QAR/GR	BAK
6	02.02.11	ISSUED FOR APPROVAL	AB	QAR/GR	BAK

REV. NO.	DATE	DESCRIPTION	BY	CHKD.	APPD.
0	17.12.09	ISSUED FOR APPROVAL	AB	JY/SR	KCS
1	07.01.10	ISSUED FOR APPROVAL	AB	QAR/GR	KCS
2	28.01.10	ISSUED FOR APPROVAL	AB	QAR/GR	KCS
3	04.02.10	ISSUED FOR APPROVAL	AB	QAR/GR	KCS
4	05.02.10	ISSUED FOR APPROVAL	AB	QAR/GR	KCS
5	09.02.10	ISSUED FOR APPROVAL	AB	QAR/GR	BAK
6	02.02.11	ISSUED FOR APPROVAL	AB	QAR/GR	BAK

REV. NO.	DATE	DESCRIPTION	BY	CHKD.	APPD.
0	17.12.09	ISSUED FOR APPROVAL	AB	JY/SR	KCS
1	07.01.10	ISSUED FOR APPROVAL	AB	QAR/GR	KCS
2	28.01.10	ISSUED FOR APPROVAL	AB	QAR/GR	KCS
3	04.02.10	ISSUED FOR APPROVAL	AB	QAR/GR	KCS
4	05.02.10	ISSUED FOR APPROVAL	AB	QAR/GR	KCS
5	09.02.10	ISSUED FOR APPROVAL	AB	QAR/GR	BAK
6	02.02.11	ISSUED FOR APPROVAL	AB	QAR/GR	BAK

REV. NO.	DATE	DESCRIPTION	BY	CHKD.	APPD.
0	17.12.09	ISSUED FOR APPROVAL	AB	JY/SR	KCS
1	07.01.10	ISSUED FOR APPROVAL	AB	QAR/GR	KCS
2	28.01.10	ISSUED FOR APPROVAL	AB	QAR/GR	KCS
3	04.02.10	ISSUED FOR APPROVAL	AB	QAR/GR	KCS
4	05.02.10	ISSUED FOR APPROVAL	AB	QAR/GR	KCS
5	09.02.10	ISSUED FOR APPROVAL	AB	QAR/GR	BAK
6	02.02.11	ISSUED FOR APPROVAL	AB	QAR/GR	BAK

REV. NO.	DATE	DESCRIPTION	BY	CHKD.	APPD.
0	17.12.09	ISSUED FOR APPROVAL	AB	JY/SR	KCS
1	07.01.10	ISSUED FOR APPROVAL	AB	QAR/GR	KCS
2	28.01.10	ISSUED FOR APPROVAL	AB	QAR/GR	KCS
3	04.02.10	ISSUED FOR APPROVAL	AB	QAR/GR	KCS
4	05.02.10	ISSUED FOR APPROVAL	AB	QAR/GR	KCS
5	09.02.10	ISSUED FOR APPROVAL	AB	QAR/GR	BAK
6	02.02.11	ISSUED FOR APPROVAL	AB	QAR/GR	BAK

REV. NO.	DATE	DESCRIPTION	BY	CHKD.	APPD.
0	17.12.09	ISSUED FOR APPROVAL	AB	JY/SR	KCS
1	07.01.10	ISSUED FOR APPROVAL	AB	QAR/GR	KCS
2	28.01.10	ISSUED FOR APPROVAL	AB	QAR/GR	KCS
3	04.02.10	ISSUED FOR APPROVAL	AB	QAR/GR	KCS
4	05.02.10	ISSUED FOR APPROVAL	AB	QAR/GR	KCS
5	09.02.10	ISSUED FOR APPROVAL	AB	QAR/GR	BAK
6	02.02.11	ISSUED FOR APPROVAL	AB	QAR/GR	BAK

REV. NO.	DATE	DESCRIPTION	BY	CHKD.	APPD.
0	17.12.09	ISSUED FOR APPROVAL	AB	JY/SR	KCS
1	07.01.10	ISSUED FOR APPROVAL	AB	QAR/GR	KCS
2	28.01.10	ISSUED FOR APPROVAL	AB	QAR/GR	KCS
3	04.02.10	ISSUED FOR APPROVAL	AB	QAR/GR	KCS
4	05.02.10	ISSUED FOR APPROVAL	AB	QAR/GR	KCS
5	09.02.10	ISSUED FOR APPROVAL	AB	QAR/GR	BAK
6	02.02.11	ISSUED FOR APPROVAL	AB	QAR/GR	BAK

REV. NO.	DATE	DESCRIPTION	BY	CHKD.	APPD.
0	17.12.09	ISSUED FOR APPROVAL	AB	JY/SR	KCS
1	07.01.10	ISSUED FOR APPROVAL	AB	QAR/GR	KCS
2	28.01.10	ISSUED FOR APPROVAL	AB	QAR/GR	KCS
3	04.02.10	ISSUED FOR APPROVAL	AB	QAR/GR	KCS
4	05.02.10	ISSUED FOR APPROVAL	AB	QAR/GR	KCS
5	09.02.10	ISSUED FOR APPROVAL	AB	QAR/GR	BAK
6	02.02.11	ISSUED FOR APPROVAL	AB	QAR/GR	BAK

REV. NO.	DATE	DESCRIPTION	BY	CHKD.	APPD.
0	17.12.09	ISSUED FOR APPROVAL	AB	JY/SR	KCS
1	07.01.10	ISSUED FOR APPROVAL	AB	QAR/GR	KCS
2	28.01.10	ISSUED FOR APPROVAL	AB	QAR/GR	KCS
3	04.02.10	ISSUED FOR APPROVAL	AB	QAR/GR	KCS
4	05.02.10	ISSUED FOR APPROVAL	AB	QAR/GR	KCS
5	09.02.10	ISSUED FOR APPROVAL	AB	QAR/GR	BAK
6	02.02.11	ISSUED FOR APPROVAL	AB	QAR/GR	BAK

REV. NO.	DATE	DESCRIPTION	BY	CHKD.	APPD.
0	17.12.09	ISSUED FOR APPROVAL	AB	JY/SR	KCS
1	07.01.10	ISSUED FOR APPROVAL	AB	QAR/GR	KCS
2	28.01.10	ISSUED FOR APPROVAL	AB	QAR/GR	KCS
3	04.02.10	ISSUED FOR APPROVAL	AB	QAR/GR	KCS



